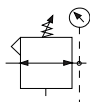
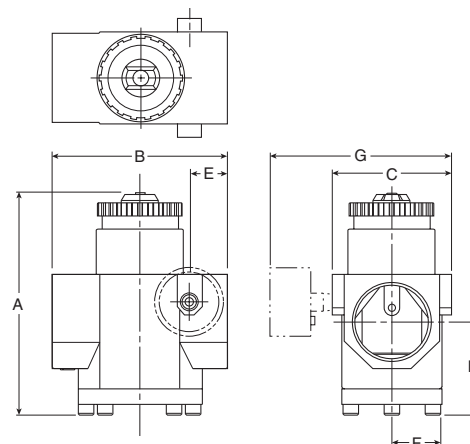


54R Dial Regulator – Relieving



Features

- Balanced Poppet Design
- Non-rising, Pressure-adjusting Dial
- High-relief Flow (3/16" Relief Orifice)
- Two 1/4" Gauge Ports
- Piston Operated
- Flow Capacity: 1-1/2" – 1,600 SCFM[§]
2" – 1,600 SCFM[§].



Port Size	High Flow 5 to 160 PSIG (0.34 to 11 bar)	Low Pressure 2 to 40 PSIG (0.14 to 2.8 bar)
1-1/2"	54R726RA	54R725RA
2"	54R826RA	54R825RA

Bold Items are Most Popular.

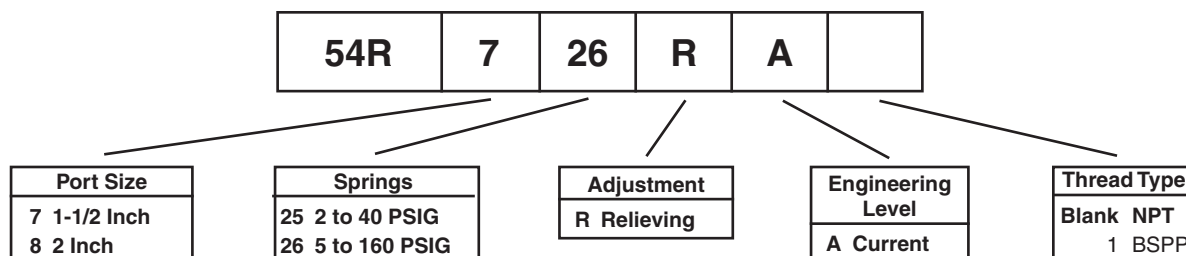
For other models refer to ordering information below.

§ SCFM = Standard cubic feet per minute at 100 PSIG inlet, 90 PSIG no flow secondary setting, and 10 PSIG pressure drop

54R Regulator Dimensions				
A	B	C	D	E
6.80 (173)	5.30 (135)	32.60 (90)	2.80 (71)	1.15 (29)
F	G			
1.80 (489)	5.30 (135)			

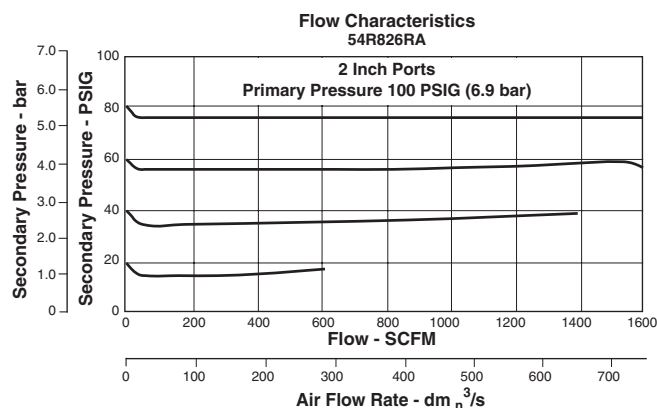
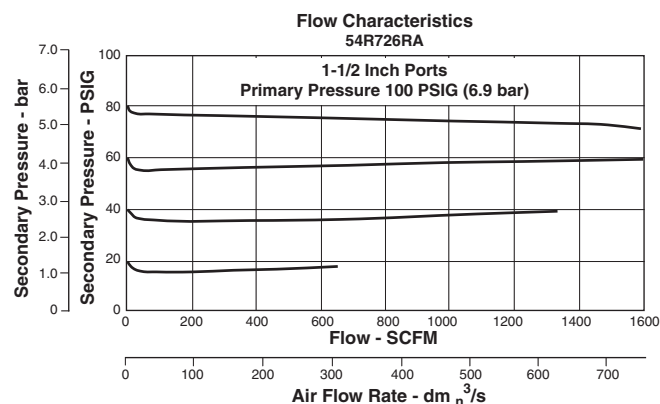
inches
(mm)

Ordering Information



BOLD ITEMS ARE MOST POPULAR.

Technical Information

**⚠ WARNING**

Product rupture can cause serious injury.
Do not connect regulator to bottled gas.
Do not exceed maximum primary pressure rating.

⚠ CAUTION:

REGULATOR PRESSURE ADJUSTMENT – The working range of knob adjustment is designed to permit outlet pressures within their full range. Pressure adjustment beyond this range is also possible because the knob is not a limiting device. This is a common characteristic of most industrial regulators, and limiting devices may be obtained only by special design. For best performance, regulated pressure should always be set by increasing the pressure up to the desired setting.

54R Regulator Kits & Accessories

Adjustment Dial Knob	RRP-16-024-80
O-ring, Repair Kit	GRP-95-262-80
Piston, Bottom and O-ring Seal	RRP-95-192-80
Pistons and Bonnet Repair Kit	RRP-95-766-80
Spring, Regulation, Belleville Washer	
2 to 40 PSIG Range	RRP-95-906-80
5 to 160 PSIG Range	RRP-95-905-80
Spring, Main Valve	RRP-95-024-80
Tamper Resistant Kit	RRP-95-585-80
Valve, Main with O-ring Seal	RRP-95-153-80
Valve, Pilot with O-ring and Valve Spring	RRP-96-935-80

Specifications

Adjusting Range Pressure	2 to 40 PSIG (14 to 276 kPa) 5 to 160 PSIG (34 to 1103 kPa)
Bleed Rate	0.05 SCFM
Gauge Ports	Two Ports 1/4" (Can be used as additional High Flow 1/4 Inch Outlet Ports)
Maximum Operating Temperature	150°F (65.5°C)
Maximum Supply Pressure	300 PSIG (2068 kPa)
Port Threads	1-1/2", 2"
Weight	9 lb. (4.1 kg)

Materials of Construction

Body	Zinc
Bonnet	Zinc / Brass
Piston	Zinc
Seals	Nitrile
Springs	Steel
Valve Assembly	Brass / Nitrile / Acetal