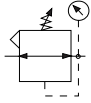
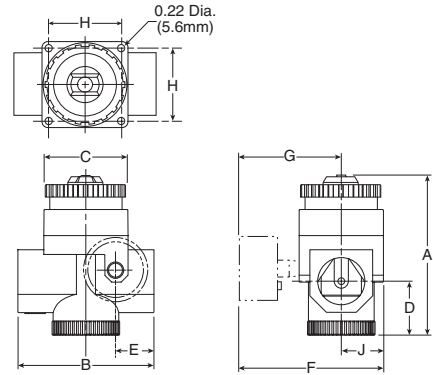


53R Dial Regulator – Relieving



Features

- Balanced Poppet Design
- Non-rising, Pressure-adjusting Dial.
- High-relief Flow (3/16" Relief Orifice)
- Two 1/4" Gauge Ports
- Piston Operated.
- Flow Capacity: 3/4" – 400 SCFM[§]
 1" – 650 SCFM[§]
 1-1/4" – 700 SCFM[§]



Port Size	High Flow 5 to 160 PSIG (0.34 to 11 bar)	Low Pressure 2 to 40 PSIG (0.14 to 3 bar)
3/4"	53R426RA	53R425RA
1"	53R526RA	53R525RA
1-1/4"	53R626RA	53R625RA

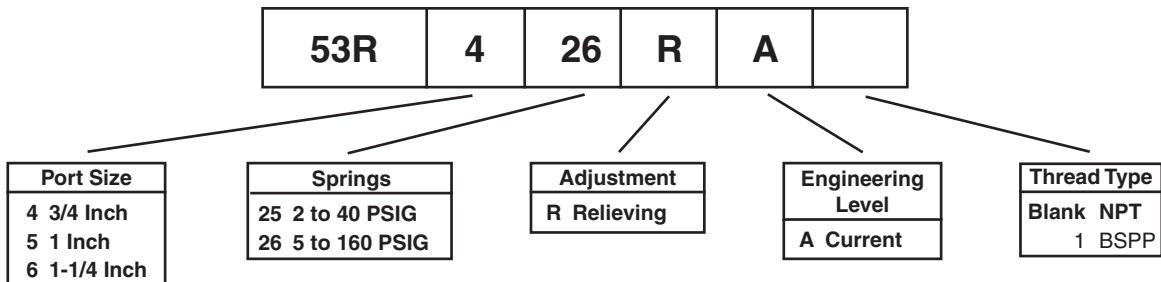
53R Regulator Dimensions				
A	B	C	D	E
5.20 (132)	4.30 (109)	2.60 (66)	1.70 (43)	1.23 (31)
F	G	H	J	
4.30 (109)	3.00 (76)	2.20 (56)	1.21 (33)	

Bold Items are Most Popular.
 For other models refer to ordering information below.

§ SCFM = Standard cubic feet per minute at 100 PSIG inlet, 90 PSIG no flow secondary setting, and 10 PSIG pressure drop.

inches
(mm)

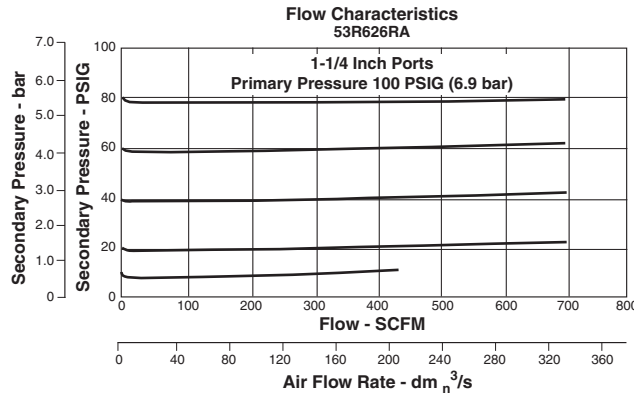
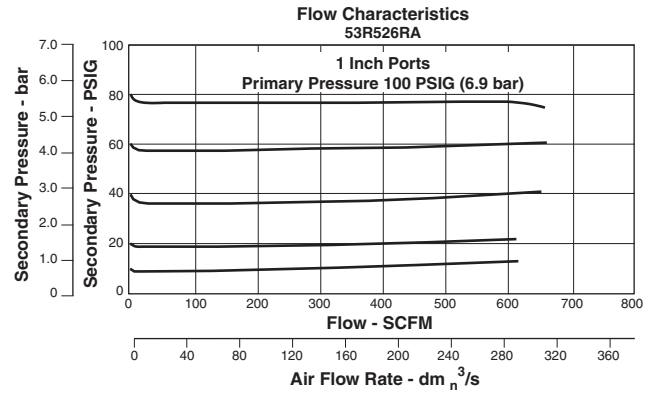
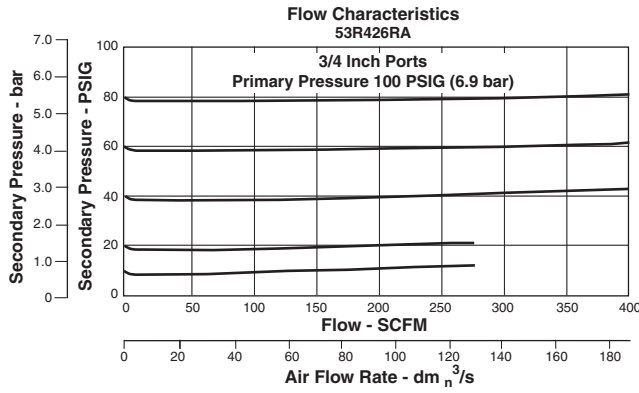
Ordering Information



BOLD ITEMS ARE MOST POPULAR.



Technical Information



⚠ WARNING
 Product rupture can cause serious injury.
 Do not connect regulator to bottled gas.
 Do not exceed maximum primary pressure rating.

⚠ CAUTION:
REGULATOR PRESSURE ADJUSTMENT – The working range of knob adjustment is designed to permit outlet pressures within their full range. Pressure adjustment beyond this range is also possible because the knob is not a limiting device. This is a common characteristic of most industrial regulators, and limiting devices may be obtained only by special design. For best performance, regulated pressure should always be set by increasing the pressure up to the desired setting.

53R Regulator Kits & Accessories

- Adjustment Dial Knob RRP-16-024-80
- O-ring, Repair Kit GRP-95-261-80
- Piston, Bottom and O-ring Seal RRP-95-192-80
- Pistons and Bonnet Repair Kit RRP-95-766-80
- Spring, Regulation, Belleville Washer
 - 2 to 40 PSIG Range RRP-95-906-80
 - 5 to 160 PSIG Range RRP-95-905-80
- Tamper Resistant Kit RRP-95-585-80
- Valve, Main with O-ring Seal RRP-95-152-80
- Valve, Pilot with O-ring and Valve Spring RRP-96-935-80

Specifications

- Adjusting Range Pressure 2 to 40 PSIG (14 to 276 kPa)
 5 to 160 PSIG (34 to 1103 kPa)
- Bleed Rate 0.05 SCFM
- Gauge Ports Two Ports 1/4"
 (Can be used as additional High Flow 1/4 Inch Outlet Ports)
- Maximum Operating Temperature 150°F (65.5°C)
- Maximum Supply Pressure 300 PSIG (2068 kPa)
- Port Threads 3/4", 1", 1-1/4"
- Weight 4.0 lb. (1.8 kg)

Materials of Construction

- Body Zinc
- Bonnet Zinc / Brass
- Piston Acetal
- Seals Nitrile
- Springs Steel
- Valve Assembly Brass / Nitrile / Acetal

