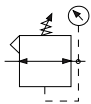
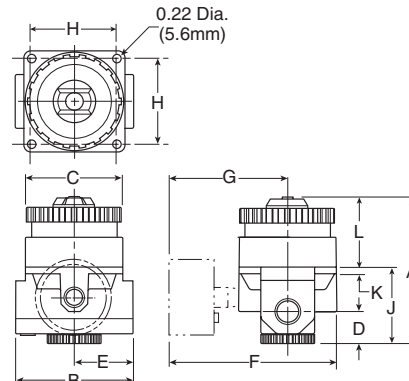


52R Dial Regulator – Relieving



Features

- Balanced Poppet Design
- Non-rising, Pressure-adjusting Dial
- High-relief Flow (3/16" Relief Orifice)
- Two 1/4" Gauge Ports
- Piston Operated
- Flow Capacity: 1/4" – 117 SCFM[§]
3/8" – 180 SCFM[§]
1/2" – 195 SCFM[§]
3/4" – 220 SCFM[§]



Port Size	High Flow 5 to 160 PSIG (0,34 to 11 bar)	Low Pressure 2 to 40 PSIG (0,14 to 3 bar)
1/4"	52R126RA	52R125RA
3/8"	52R226RA	52R225RA
1/2"	52R326RA	52R325RA
3/4"	52R426RA	52R425RA

52R Regulator Dimensions				
A	B	C	D	E
4.10 (104)	3.20 (81)	2.60 (66)	0.95 (24)	1.60 (71)
F	G	H	J	K
4.30 (109)	2.70 (69)	2.20 (56)	2.08 (52.8)	.18 (4.6)
L				
2.07 (52.6)				

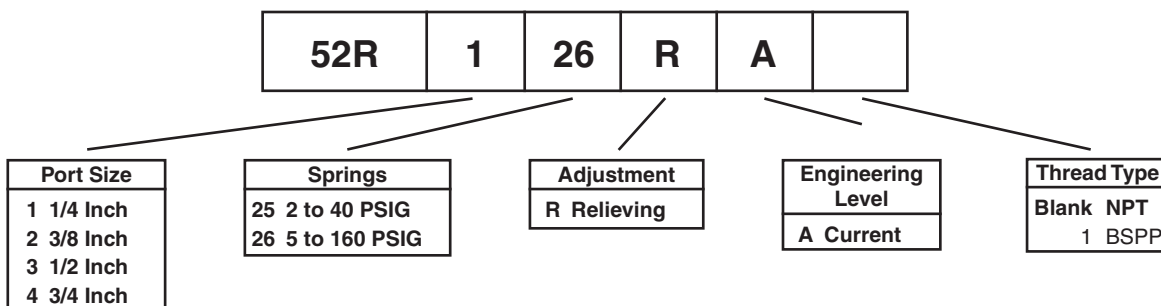
Bold Items are Most Popular.

For other models refer to ordering information below.

§ SCFM = Standard cubic feet per minute at 100 PSIG inlet, (1/4, 1/2 & 3/4) 90 PSIG, (3/8) 80 PSIG no flow secondary setting, and 25 PSIG pressure drop.

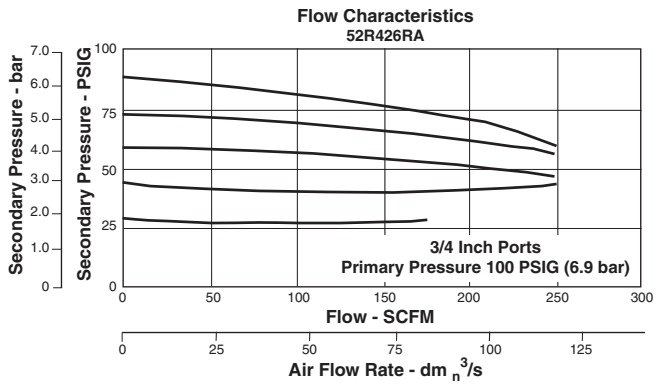
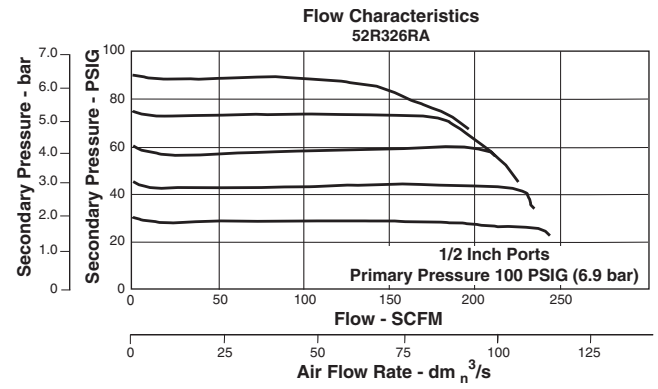
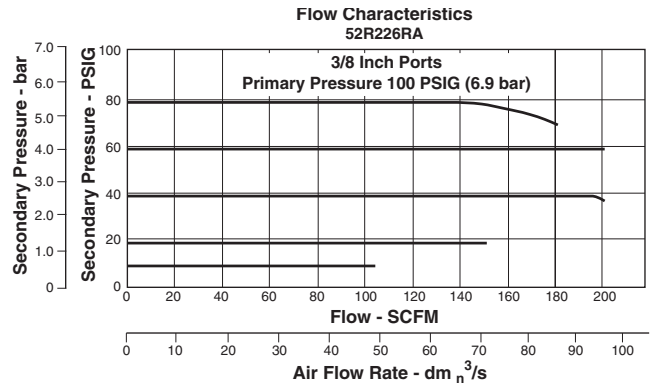
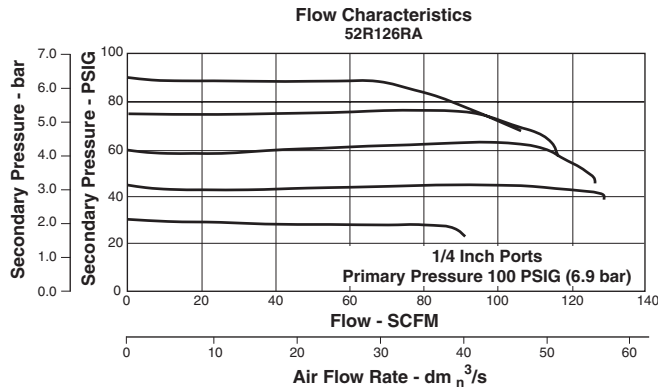
inches
(mm)

Ordering Information



BOLD ITEMS ARE MOST POPULAR.

Technical Information



⚠ WARNING
 Product rupture can cause serious injury.
 Do not connect regulator to bottled gas.
 Do not exceed maximum primary pressure rating.

⚠ CAUTION:
REGULATOR PRESSURE ADJUSTMENT – The working range of knob adjustment is designed to permit outlet pressures within their full range. Pressure adjustment beyond this range is also possible because the knob is not a limiting device. This is a common characteristic of most industrial regulators, and limiting devices may be obtained only by special design. For best performance, regulated pressure should always be set by increasing the pressure up to the desired setting.

52R Regulator Kits & Accessories

Adjustment Dial Knob	RRP-16-024-80
O-ring, Repair Kit	GRP-95-260-80
Piston Bottom and O-ring Seal	RRP-95-192-80
Pistons and Bonnet Repair Kit	RRP-95-766-80
Spring, Regulation, Belleville Washer	
2 to 40 PSIG Range	RRP-95-906-80
5 to 160 PSIG Range	RRP-95-905-80
Tamper Resistant Kit	RRP-95-585-80
Valve, Main with U-Cup Seal & Bottom Plug	RRP-95-914-80
Valve, Main with U-Cup Seal	RRP-95-151-80
Valve, Pilot with O-ring and Valve Spring	RRP-96-934-80

Specifications

Adjusting Range Pressure	2 to 40 PSIG (14 to 276 kPa) 5 to 160 PSIG (34 to 1103 kPa)
Bleed Rate	0.05 SCFM
Gauge Ports	Two Ports 1/4" (Can be used as additional High Flow 1/4 Inch Outlet Ports)
Maximum Operating Temperature	150°F (65.5°C)
Maximum Supply Pressure	300 PSIG (2068 kPa)
Port Threads	1/4", 3/8", 1/2", 3/4"
Weight	2.3 lb. (1.04 kg)

Materials of Construction

Body	Zinc
Bonnet	Zinc / Brass
Piston	Acetal
Seals	Nitrile
Springs	Steel
Valve Assembly	Brass / Nitrile / Acetal

