



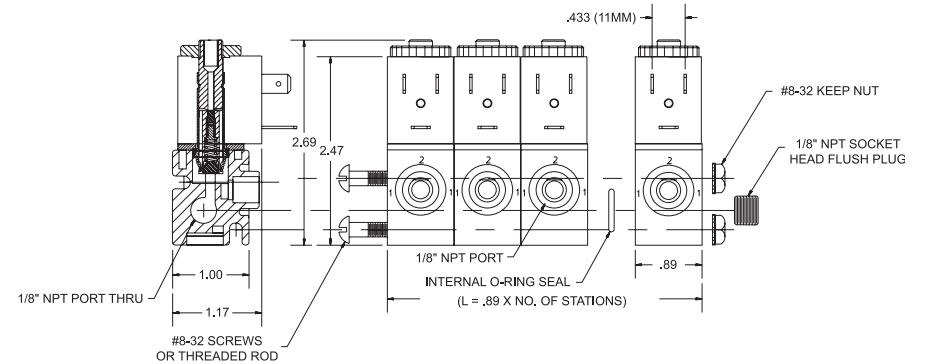
Series 3923

Application and Installation Guide



Assembly

The Series 3923 manifold is comprised of multiple single station units. The units are assembled by placing an o-ring seal between the body blocks in the aperture provided and linked together using #8-32 bolts or threaded rod.



The pressure inlets are located on either end of the manifold assembly with the cylinder port (2) located on the lower block face. On 3-2 way versions the exhaust port R (3) is located on the stem of the valve.

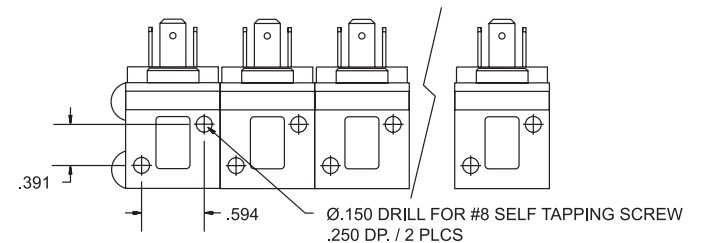
Six station manifolds or less require one inlet port. It would be necessary to block the unused inlet with an 1/8" NPT pipe plug.

For manifolds containing more than six stations, 2 inlets are suggested.

NOTE: For best results, grease ALL o-rings prior to assembly (Dow Corning Silicone 111 grease recommended)

Mounting Kits for multiple station assemblies are available from Spartan Scientific. Consult your distributor for details.

Mounting Template



Warranty Information

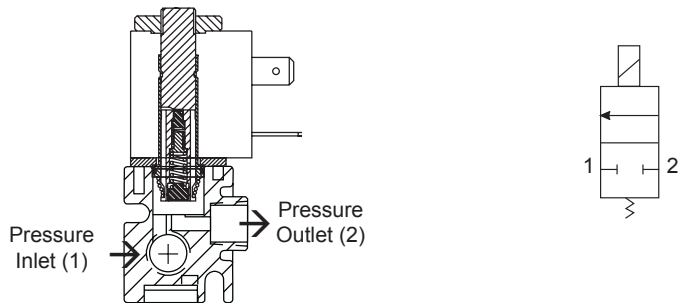
Solenoid valves and all other products manufactured by Spartan are warranted by Spartan to be free from defects in material and workmanship for a period of 1 year from the date of purchase. Spartan's obligation under this warranty is limited to repair or replacement of the defective product or refund of the purchase price paid solely at the discretion of Spartan and provided such defective product is returned to Spartan freight prepaid and upon examination by Spartan such product is found defective. This warranty shall be void in the event that the product has been subject to misuse, misapplication, improper maintenance, modification or tampering. This warranty is expressed in lieu of all other warranties, expressed or implied from Spartan Scientific, Inc., representatives or employees.



Series 3923

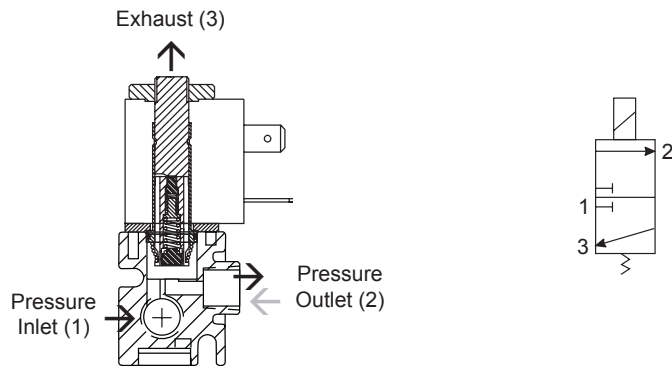
Application and Installation Guide

Two-Way, Two Position, Normally Closed



- Position 1) Coil De-energized. Pressure inlet port (1) is closed to outlet port (2).
- Position 2) Coil Energized. Pressure inlet port (1) is open to outlet port (2).

Three-Way, Two Position, Normally Closed



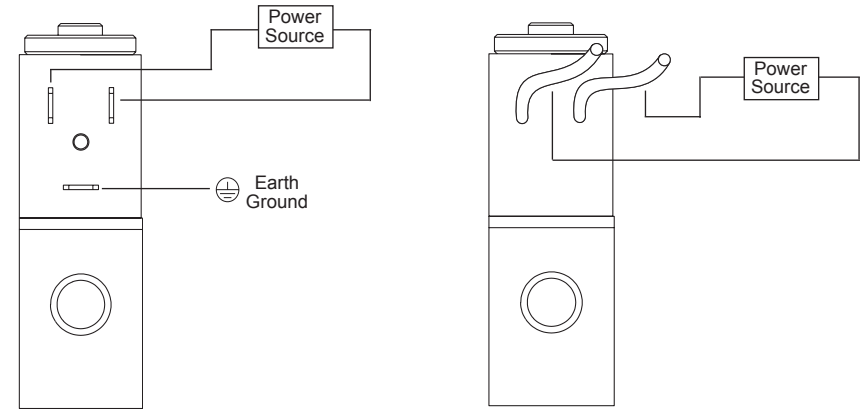
- Position 1) Coil De-energized. Pressure inlet port (1) is closed to outlet port (2). Port (2) is open to exhaust port (3).
- Position 2) Coil Energized. Pressure port (1) is open to outlet port (2). Exhaust port (3) closed.



Series 3923

Application and Installation Guide

Electrical Hook-up



DIN Connector
Power leads connected to vertical pins on all versions. Horizontal pin is earth ground on all versions.

Flying Leads
Power leads connected to coil flying leads. No earth ground present.

Warning! Plastic pipe threads.
Overtightening of fittings may result in premature part failure.
Spartan Scientific requests the use of plastic molded pipe fittings whenever possible. If metal fittings are used do not exceed a maximum of 45 in. lbs. of applied torque, or finger tighten and turn 2 1/2 turns with a conventional box end wrench.

Caution

Excessive use of pipe sealant can cause clogging and leakage. Please follow ASME standards for applying pipe sealant and tape. Do not use media, voltage or pressures other than that recommended by Spartan Scientific Inc. as valve malfunction could result. Misuse or misapplication of Spartan solenoid valves could cause serious bodily injury or property damage.