

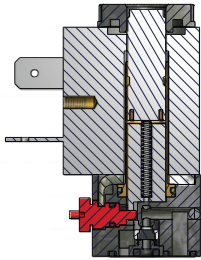
# Series 38KRI

## Application and Installation Guide

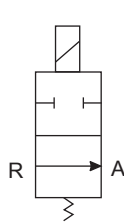


Series 38KRI 2-Way & 3-Way Normally Closed and Normally Open Solenoid Pilot Operator Assembly.

### Two-Way, Two-Position, Normally Open



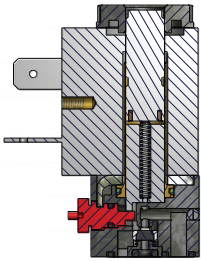
Pressure Outlet A (2) ↓ ↑ Pressure Inlet R (3)



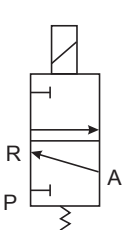
Position 1) Coil De-energized. Pressure inlet port R (3) is open to outlet port A (2).

Position 2) Coil Energized. Pressure inlet port R (3) is blocked to outlet port A (2).

### Three-Way, Two-Position, Normally Closed



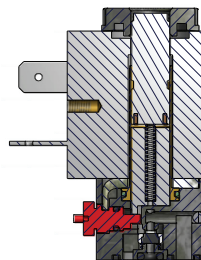
Pressure Inlet P (1) ↑ ↓ Exhaust R (3)  
Pressure Outlet A (2)



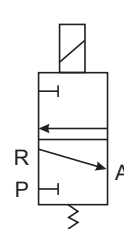
Position 1) Coil De-energized. Pressure inlet port P (1) is closed from outlet port A (2). A (2) is open to R (3) Exhaust.

Position 2) Coil Energized. Pressure inlet port P (1) is connected to outlet port A (2). Port R(3) Exhaust is blocked.

### Three-Way, Two-Position, Normally Open



Exhaust P (1) ↓ ↓ ↑ Pressure Inlet R (3)  
Pressure Outlet A (2)



Position 1) Coil De-energized. Pressure port R (3) is open to outlet port A (2). Exhaust port P (1) is Blocked.

Position 2) Coil Energized. Pressure port R (3) is blocked. Outlet port A (2) is open to Exhaust port P (1).

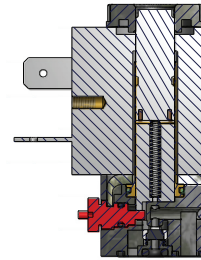
# Series 38KRI

## Application and Installation Guide

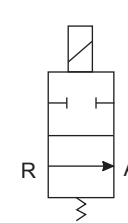


Series 38KRI 2-Way & 3-Way Normally Closed and Normally Open Solenoid Pilot Operator Assembly.

### Two-Way, Two-Position, Normally Open



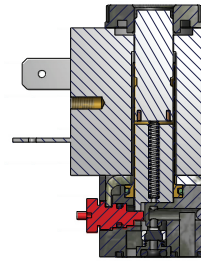
Pressure Outlet A (2) ↓ ↑ Pressure Inlet R (3)



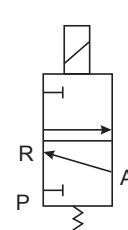
Position 1) Coil De-energized. Pressure inlet port R (3) is open to outlet port A (2).

Position 2) Coil Energized. Pressure inlet port R (3) is blocked to outlet port A (2).

### Three-Way, Two-Position, Normally Closed



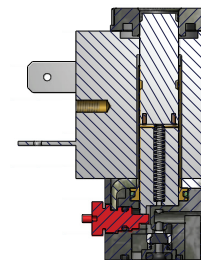
Pressure Inlet P (1) ↑ ↓ Exhaust R (3)  
Pressure Outlet A (2)



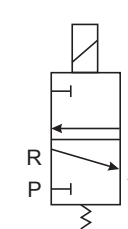
Position 1) Coil De-energized. Pressure inlet port P (1) is closed from outlet port A (2). A (2) is open to R (3) Exhaust.

Position 2) Coil Energized. Pressure inlet port P (1) is connected to outlet port A (2). Port R(3) Exhaust is blocked.

### Three-Way, Two-Position, Normally Open



Exhaust P (1) ↓ ↓ ↑ Pressure Inlet R (3)  
Pressure Outlet A (2)



Position 1) Coil De-energized. Pressure port R (3) is open to outlet port A (2). Exhaust port P (1) is Blocked.

Position 2) Coil Energized. Pressure port R (3) is blocked. Outlet port A (2) is open to Exhaust port P (1).

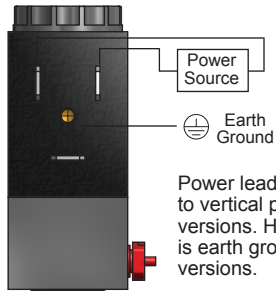
# Series 38KRI

## Application and Installation Guide



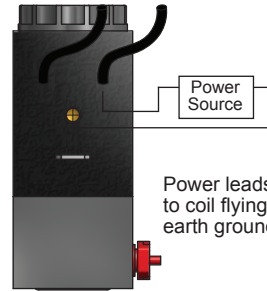
### Electrical Hook-Up

#### Spade Style Coil



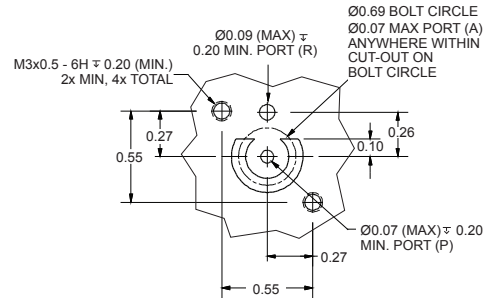
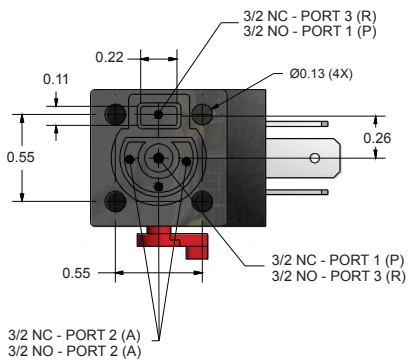
Power leads connected to vertical pins on all versions. Horizontal pin is earth ground on all versions.

#### Flying Lead Style Coil



Power leads connected to coil flying leads. No earth ground present.

### Mounting Hole / Passage Pattern



### Caution

Excessive use of pipe sealant can cause clogging and leakage. Please follow ASME standards for applying pipe sealant and tape. Do not use media, voltage or pressures other than that recommended by Spartan Scientific Inc. as valve malfunction could result. Misuse or misapplication of Spartan solenoid valves could cause serious bodily injury or property damage.

### Warranty Information

Solenoid valves and all other products manufactured by Spartan are warranted by Spartan to be free from defects in material and workmanship for a period of 1 year from the date of purchase. Spartan's obligation under this warranty is limited to repair or replacement of the defective product or refund of the purchase price paid solely at the discretion of Spartan and provided such defective product is returned to Spartan freight prepaid and upon examination by Spartan such product is found defective. This warranty shall be void in the event that the product has been subject to misuse, misapplication, improper maintenance, modification or tampering. This warranty is expressed in lieu of all other warranties, expressed or implied from Spartan Scientific, Inc., representatives or employees.

**SPARTAN SCIENTIFIC**  
www.spartanscientific.com

P.O. Box 9792, Boardman, Ohio 44513  
(330) 758-8446 Fax: (330) 758-3314

www.comoso.com

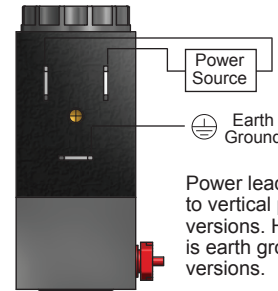
# Series 38KRI

## Application and Installation Guide



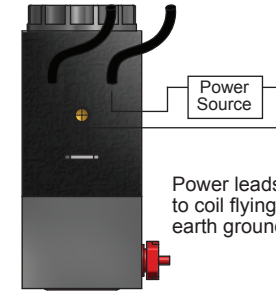
### Electrical Hook-Up

#### Spade Style Coil



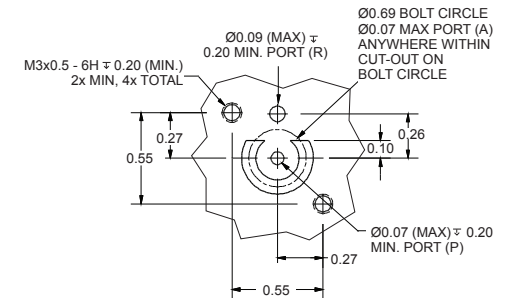
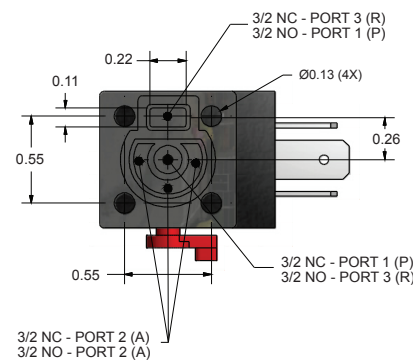
Power leads connected to vertical pins on all versions. Horizontal pin is earth ground on all versions.

#### Flying Lead Style Coil



Power leads connected to coil flying leads. No earth ground present.

### Mounting Hole / Passage Pattern



### Caution

Excessive use of pipe sealant can cause clogging and leakage. Please follow ASME standards for applying pipe sealant and tape. Do not use media, voltage or pressures other than that recommended by Spartan Scientific Inc. as valve malfunction could result. Misuse or misapplication of Spartan solenoid valves could cause serious bodily injury or property damage.

### Warranty Information

Solenoid valves and all other products manufactured by Spartan are warranted by Spartan to be free from defects in material and workmanship for a period of 1 year from the date of purchase. Spartan's obligation under this warranty is limited to repair or replacement of the defective product or refund of the purchase price paid solely at the discretion of Spartan and provided such defective product is returned to Spartan freight prepaid and upon examination by Spartan such product is found defective. This warranty shall be void in the event that the product has been subject to misuse, misapplication, improper maintenance, modification or tampering. This warranty is expressed in lieu of all other warranties, expressed or implied from Spartan Scientific, Inc., representatives or employees.

**SPARTAN SCIENTIFIC**  
www.spartanscientific.com

P.O. Box 9792, Boardman, Ohio 44513  
(330) 758-8446 Fax: (330) 758-3314