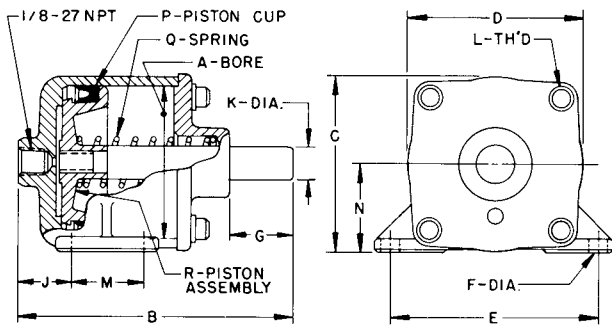
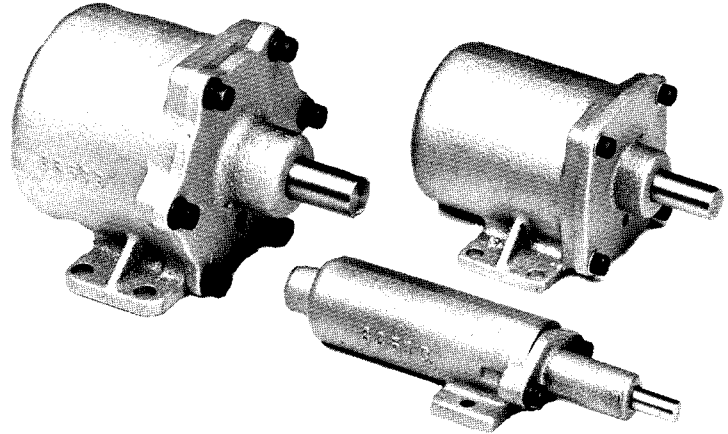


VERSATILE, WIDELY USED, RUGGED AND RELIABLE: 1", 2¼" AND 3" BORES, 150 PSI

Ideal for stamping, staking, pressing, punching, bending and holding in assembly, drilling, positioning, and pressure testing fixtures. The heavy bronze castings and rugged piston and rod construction give you a long-life, dependable, easily serviced cylinder.

SIDE LEG MOUNTED CYLINDERS

These cylinders deliver a smooth, rapid, push power stroke parallel to the mounting surface. The location of the threaded air port is on the same center as the piston rod. Adaptable for use in rotating fixtures. Fully enclosed springs give rapid piston return. Stainless steel rods standard. Available with threaded piston rods.



MODEL NUMBER	REPLACEMENT PARTS		
	P	Q	R
OLD 3351A NEW 03351-0099	03451-0022	03451-0039	03451-0079
OLD 3351B NEW 03351-0199	03451-0022	03451-0039	03451-0139
OLD 3351C NEW 03351-0299	03451-0022	03351-0240	03351-0260
OLD 3352A NEW 03352-0099	03452-0029	03452-0049	03452-0089
OLD 3352B NEW 03352-0199	03452-0029	03452-0049	03452-0159
OLD 3353A NEW 03353-0099	03453-0029	03453-0051	03453-0110
OLD 3353B NEW 03353-0199	03453-0029	03453-0051	03453-0170

MODEL NUMBER	STROKE (INCHES)	BORE (INCHES)	DIMENSIONS											
			B	C	D	E	F	G	J	K	L	M	N	
OLD 3351A NEW 03351-0099	1	1	in. mm	3.58 90.9	1.22 31.0	1.19 30.2	1.62 41.1	.20 5.1	.73 18.5	1.31 33.3	.31 7.9	10-32 -	- -	.62 15.7
OLD 3351B NEW 03351-0199	2	1	in. mm	4.58 116.3	1.22 31.0	1.19 30.2	1.62 41.1	.20 5.1	.73 18.5	2.31 58.7	.31 7.9	10-32 -	- -	.62 15.7
OLD 3351C NEW 03351-0299	3	1	in. mm	6.19 157.2	1.25 31.8	1.81 46.0	1.62 41.1	.20 5.1	.73 18.5	3.31 84.1	.31 7.9	10-32 -	- -	.62 15.7
OLD 3352A NEW 03352-0099	1	2¼	in. mm	4.03 102.4	2.59 65.8	2.56 65.0	3.06 77.7	.27 6.9	1.00 25.4	.78 19.8	.50 12.7	10-32 -	1.06 26.9	1.31 33.3
OLD 3352B NEW 03352-0199	2	2¼	in. mm	5.03 127.8	2.59 65.8	2.56 65.0	3.06 77.7	.27 6.9	1.00 25.4	1.78 45.2	.50 12.7	10-32 -	1.06 26.9	1.31 33.3
OLD 3353A NEW 03353-0099	1	3	in. mm	4.66 118.4	3.50 88.9	3.31 84.1	3.38 85.9	.33 8.4	1.08 27.4	.89 22.6	.62 15.7	¼-28 -	1.12 28.4	1.75 44.4
OLD 3353B NEW 03353-0199	2	3	in. mm	5.66 143.8	3.50 88.9	3.31 84.1	3.38 85.9	.33 8.4	1.08 27.4	1.89 48.0	.62 15.7	¼-28 -	1.12 28.4	1.75 44.4

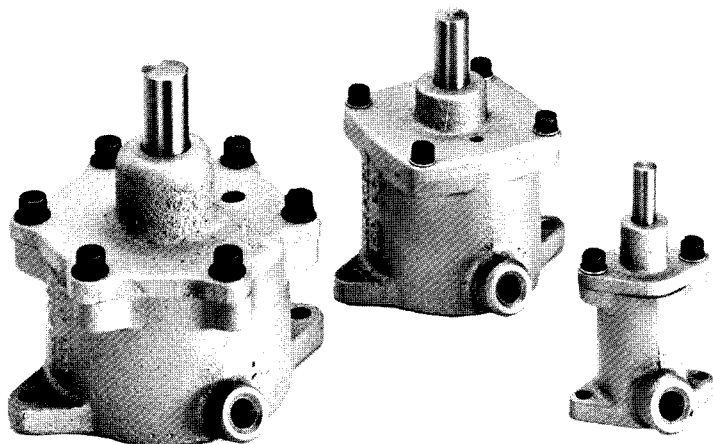
For additional information – call your local Schrader Bellows Distributor.



Clamping Cylinders

VERSATILE, WIDELY USED, RUGGED AND RELIABLE: 1", 2¼" AND 3" BORES, 150 PSI

Ideal for stamping, staking, pressing, punching, bending and holding in assembly, drilling, positioning, and pressure testing fixtures. The heavy bronze castings and rugged piston and rod construction give you a long-life, dependable, easily serviced cylinder.

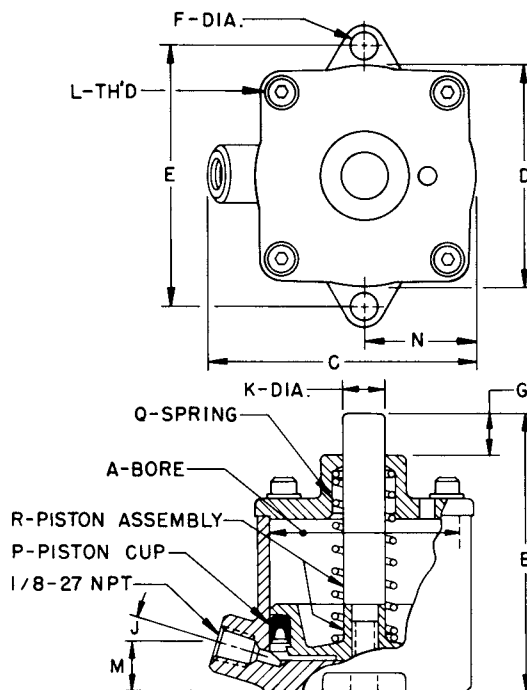


BASE MOUNTED CYLINDERS

Base mounted cylinders deliver a push power stroke perpendicular to the mounting surface. One air seal – a "U" section piston cup – assures minimum friction loss, and a positive, air-tight seal. Fully enclosed springs give rapid piston return. Stainless steel rods standard. Available with threaded piston rods.

A

MODEL NUMBER	REPLACEMENT PARTS		
	P	Q	R
OLD 3451A NEW 03451-0099	03451-0022	03451-0039	03451-0079
OLD 3451B NEW 03451-0159	03451-0022	03451-0039	03451-0139
OLD 3452A NEW 03452-0119	03452-0029	03452-0049	03452-0089
OLD 3452B NEW 03452-0179	03452-0029	03452-0049	03452-0159
OLD 3453A NEW 03453-0129	03453-0029	03453-0051	03453-0110
OLD 3453B NEW 03453-0189	03453-0029	03453-0051	03453-0170



MODEL NUMBER	STROKE (INCHES)	BORE (INCHES)	DIMENSIONS											
			B	C	D	E	F	G	J	K	L	M	N	
OLD 3451A NEW 03451-0099	1	1	in. mm	3.25 82.6	1.81 46.0	1.19 30.2	1.62 41.1	.20 5.1	.73 18.5	17°	.31 7.9	10-32 -	.56 14.2	.59 15.0
OLD 3451B NEW 03451-0159	2	1	in. mm	4.25 108.0	1.81 46.0	1.19 30.2	1.62 41.1	.20 5.1	.73 18.5	17°	.31 7.9	10-32 -	.56 14.2	.59 15.0
OLD 3452A NEW 03452-0119	1	2¼	in. mm	3.77 95.8	3.12 79.2	2.56 65.0	3.06 77.7	.27 6.9	1.00 25.4	17°	.50 12.7	10-32 -	.56 14.2	1.28 32.5
OLD 3452B NEW 03452-0179	2	2¼	in. mm	4.77 121.2	3.12 79.2	2.56 65.0	3.06 77.7	.27 6.9	1.00 25.4	17°	.50 12.7	10-32 -	.56 14.2	1.28 32.5
OLD 3453A NEW 03453-0129	1	3	in. mm	4.33 110.0	3.97 100.8	3.31 84.1	4.00 101.6	.33 8.4	1.08 27.4	17°	.62 15.7	¼-28 -	.56 14.2	1.75 44.4
OLD 3453B NEW 03453-0189	2	3	in. mm	5.33 135.4	3.97 100.8	3.31 84.1	4.00 101.6	.33 8.4	1.08 27.4	17°	.62 15.7	¼-28 -	.56 14.2	1.75 44.4