

## Datasheet - BNS 260-11/01ZG-ST-R

Safety sensors / BNS 260

☒ Preferred typ



- thermoplastic enclosure
- Small body
- Concealed mounting possible
- 26 mm x 36 mm x 13 mm
- Long life
- no mechanical wear
- Insensitive to transverse misalignment
- Insensitive to soiling
- Connector 8 mm, 6-pole, Latching interlocking

(Minor differences between the printed image and the original product may exist!)

### Ordering details

Product type description	BNS 260-11/01ZG-ST-R
Article number	101184368
EAN code	4030661321660

### Approval

Approval



BG



USA/CAN

### Classification

Standards	EN ISO 13849-1
B <sub>10d</sub> Opener/Normally open contact (NC/NO)	25.000.000
- notice	at max. 20% contact load
Mission time	20 Years
notice	$MTTF_d = \frac{B_{10d}}{0,1 \times n_{op}}$ $n_{op} = \frac{d_{op} \times h_{op} \times 3600 \text{ s/h}}{t_{cycle}}$

### Global Properties

Product name	BNS 260
Standards	IEC 60947-5-3, BG-GS-ET-14
Compliance with the Directives (Y/N)	Yes

**Materials**

- Material of the housings	Plastic, glass-fibre reinforced thermoplastic
Weight	15 g
Coding available (Y/N)	Yes
Monitoring function of downstream devices (Y/N)	No
Prerequisite evaluation unit	
Recommended safety-monitoring module	
Recommended actuator	BPS 260

**Mechanical data**

Design of electrical connection	Connector 8 mm, 6-pole, Latching interlocking
mechanical installation conditions	quasi-flush
Active area	
Ensured switch distance ON $S_{ao}$	5 mm
Ensured switch distance OFF $S_{ar}$	15 mm
notice	<b>Axial misalignment</b> The safety sensor and the actuator tolerate a horizontal and vertical misalignment to each other. The possible misalignment depends on the distance of the active surfaces of the sensor and the actuator. The sensor is active in the tolerance range.
Type of actuation	Magnet
Direction of motion	head-on with regard to the active surface
restistance to shock	30 g / 11 ms
Resistance to vibration	10 ... 55 Hz, Amplitude 1 mm
Door hinge	right

**Ambient conditions**

Ambient temperature	
- Min. environmental temperature	-25 °C
- Max. environmental temperature	+70 °C
Storage and transport temperature	
- Min. Storage and transport temperature	-25 °C
- Max. Storage and transport temperature	+70 °C
Protection class	IP67

**Electrical data**

Integrated Safety monitoring module available (Y/N)	No
Cross circuit/short circuit recognition possible (Y/N)	Yes
Voltage type	VDC
Switch frequency	max. 5 Hz
Switching voltage	max. 24 VDC
Switching current	max. 10 mA
Switching capacity	max. 240 mW

**Outputs**

Design of control output	
Number of shutters	1 piece
Number of openers	2 piece
Design of output signal switching device	

**Electrical data - Safety outputs**

Number of secure semi-conductor outputs	0 piece
Number of secure outputs with contact	2 piece

### Electrical data - Diagnostic output

Number of semi-conductor outputs with signaling function	0 piece
Number of outputs with signaling function that already have a contact	1 piece

### LED switching conditions display

LED switching conditions display (Y/N)	Yes
- The LED is illuminated when the guard is closed.	

### ATEX

Explosion protection categories for gases	None
Explosion protected category for dusts	None

### Dimensions

Dimensions of the sensor	
- Width of sensor	26 mm
- Height of sensor	36 mm
- Length of sensor	13 mm

### notice

Contact symbols shown for the closed condition of the guard device.  
The contact configuration for versions with or without LED is identical.  
The number in brackets indicate the PIN number of the connector.  
Contact S21-S22 und S11-S12 must be integrated in the safety circuit

### Included in delivery

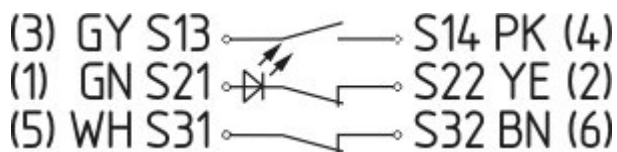
Actuators must be ordered separately.

### Indication legend

#### Switch on/off diagram

The actuating graph also applies to the BPS 260-2, the actuator with 90° inverted actuation.

### Diagram



Note Diagram

- positive break NC contact
- active
- no active



Normally-open contact



Normally-closed contact

## Ordering code

---

**BNS 260-(1)(2)Z(3)-(4)-(5)****(1)****11** 1 Normally open contact (NO) / 1 Opener (NC)**02** 2 Opener (NC)**(2)***without* without Diagnostic output**/01** 1 Opener (NC)**(3)***without* without LED switching conditions display**G** with LED switching conditions display**(4)***without* Pre-wired cable**ST** with connector**(5)****L** Door hinge on left-hand side**R** Door hinge on right-hand side

## Documents

---

**Operating instructions and Declaration of conformity** (pt) 313 kB, 29.11.2011

Code: mrl\_bns260\_pt

**Operating instructions and Declaration of conformity** (cs) 323 kB, 04.06.2012

Code: mrl\_bns260\_cs

**Operating instructions and Declaration of conformity** (fr) 269 kB, 19.04.2013

Code: mrl\_bns260\_fr

**Operating instructions and Declaration of conformity** (de) 266 kB, 17.01.2013

Code: mrl\_bns260\_de

**Operating instructions and Declaration of conformity** (it) 264 kB, 18.03.2013

Code: mrl\_bns260\_it

**Operating instructions and Declaration of conformity** (br) 699 kB, 11.08.2011

Code: mrl\_bns260\_br

**Operating instructions and Declaration of conformity** (nl) 269 kB, 05.04.2013

Code: mrl\_bns260\_nl

**Operating instructions and Declaration of conformity** (pl) 323 kB, 02.04.2012

Code: mrl\_bns260\_pl

**Operating instructions and Declaration of conformity** (jp) 389 kB, 24.06.2014

Code: mrl\_bns260\_jp

**Operating instructions and Declaration of conformity** (en) 269 kB, 17.01.2013

Code: mrl\_bns260\_en

**Operating instructions and Declaration of conformity (es)** 320 kB, 13.09.2011

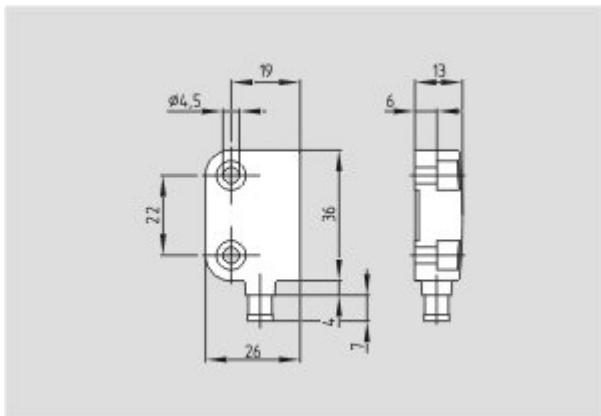
Code: mrl\_bns260\_es

**Operating instructions and Declaration of conformity (da)** 314 kB, 27.08.2012

Code: mrl\_bns260\_da

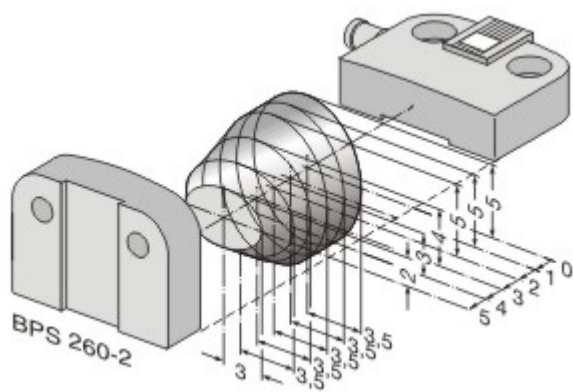
## Images

---



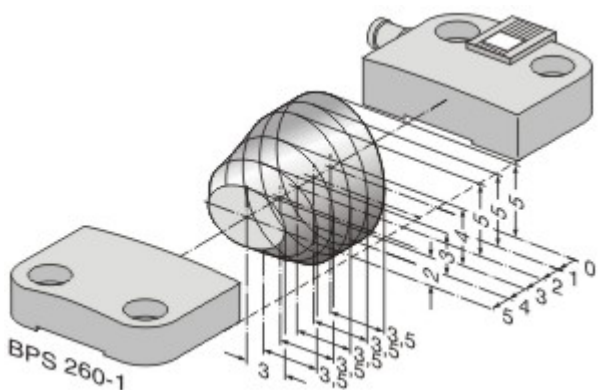
Dimensional drawing (basic component)

---



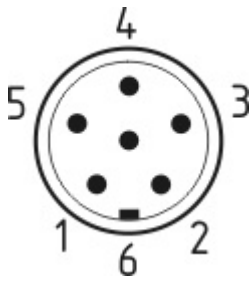
Characteristic curve

---

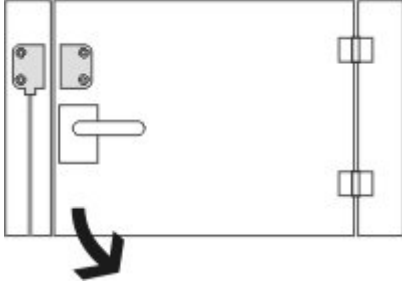


Characteristic curve

---



Contact arrangement



Clipart

## System components

### Actuator



#### 101184395 - BPS 260-1

- Actuator and sensor on a mounting level



#### 101184396 - BPS 260-2

- Actuator 90 ° attached to the sensor

### Accessories



#### 101184643 - SPACER BNS 260

to mount the magnetic safety sensor and actuator on ferromagnetic material