

# LINKnet TechBox



LINKnet is compatible with the software DSE version 3.00 or greater.

**Product  
Manual  
HA473865U001  
Issue 2**

# Safety Information



**Please read this information BEFORE installing the equipment.**

## Intended Users

This manual is to be made available to all persons who are required to install, configure or service equipment described herein, or any other associated operation.

The information given is intended to highlight safety issues, and to enable the user to obtain maximum benefit from the equipment.

## Application Area

The equipment described is intended for industrial motor speed control using DC or AC motor controllers, with DC motors AC induction or AC synchronous machines.

## Personnel

Installation, operation and maintenance of the equipment should be carried out by qualified personnel. A qualified person is someone who is technically competent and familiar with all safety information and established safety practices; with the installation process, operation and maintenance of this equipment; and with all the hazards involved.

**REFER TO YOUR MAIN PRODUCT MANUAL FOR SPECIFIC SAFETY  
INFORMATION ABOUT THE DEVICE YOU ARE CONTROLLING**

### **IMPORTANT**

*It is required that the user be familiar with navigating through the drive MMI menus, be able to select functions and set values and options. For further reading on this topic, refer to the appropriate drive instruction manual. If using DSE890 or DSElite it is required the user must be familiar with the software packages.*

© 2014 Parker Hannifin Corporation

All rights strictly reserved. No part of this document may be stored in a retrieval system, or transmitted in any form or by any means to persons not employed by a Parker SSD Drives company without written permission from Parker SSD Drives.

Although every effort has been taken to ensure the accuracy of this document it may be necessary, without notice, to make amendments or correct omissions. Parker SSD Drives cannot accept responsibility for damage, injury, or expenses resulting therefrom.

Windows is a registered trademark of Microsoft Corporation in the United States and other countries.

Printed in the USA

## Contents

<b>Chapter 1 - An Overview</b> .....	<b>5</b>
6053-LNET-00 TechBox .....	5
6055-LNET-00 TechBox .....	5
Product Features.....	6
Part Number and Identification.....	6
Ethernet Protocols supported:.....	6
Software Requirements:.....	6
Hardware supported:.....	6
<b>Chapter 2 - Installation</b> .....	<b>7</b>
Installing the Option.....	7
Wiring Requirements: .....	7
Fitting the TechBox to the frame B AC690+ Drives .....	11
Fitting the TechBox to a DC590+ and AC690+ frames C and above .....	12
<b>Chapter 3 - Initial Set-up</b> .....	<b>13</b>
There are 2 ways to communicate to the LINKnet Techbox: USB & Ethernet.....	13
IP addressing information .....	13
Configuring the LINKnet Techbox IP addressing.....	13
Installing the USB driver for DSE and the LINKnet Techbox .....	14
Setting the computer IP Address for LINKnet access via Ethernet.....	15
Configuring the Drive.....	17
<b>Chapter 4 - Using DSE Macros and Templates</b> .....	<b>19</b>
Node Addressing the LINKnet Modules .....	19
AC690+ and DC590+ Macros/Templates .....	19
690+ Macro Sample Configuration.....	24
Watchdog Circuit.....	25
<b>Chapter 5 – Connecting to the LINKnet Techbox</b> .....	<b>27</b>
Command / Get Info.....	27
Installing and updating a configuration for the first time .....	28
Cloning of Drives .....	29
<b>Chapter 6 – Extracting the DSD Configuration data</b> .....	<b>31</b>
<b>Chapter 7 – Extracting Drive data</b> .....	<b>33</b>
<b>Chapter 8 – Troubleshooting</b> .....	<b>35</b>
Health and Run LED's.....	35
Power On LED .....	35
<b>Chapter 9 – Programming TS8000</b> .....	<b>37</b>
Required Modbus Settings.....	37
Example: Configuring a TS8000 to communicate to a LINKnet Techbox.....	39
<b>Chapter 10 – Compliance</b> .....	<b>47</b>
<b>Chapter 11 – Technical Specifications</b> .....	<b>49</b>
<b>Appendix A - Sequencing States</b> .....	<b>51</b>



## Chapter 1 - An Overview

The *LINKnet* TechBox/TechCard option allows standard drives to be a part of the *LINKnet* Ethernet network. A computer may be used to provide supervision and monitoring for each drive and other modules in the system.

### 6053-LNET-00 TechBox

This techbox is to be used with the AC690+ frame B. The 6053-LNET-00 fits into the same location normally occupied by the keypad. If the keypad is needed for the application, it may still be used with a remote mounting kit. An auxiliary 24VDC power supply input allows the techbox to be powered separately from the drive. If the drive shuts down, the network remains intact.



Figure 1 – 6053 LINKnet Techbox

### 6055-LNET-00 TechBox

This techbox is to be used with the DC590+ all frames and AC690+ frames C and higher. The 6055-LNET-00 plugs into the right side technology box slot beneath the front cover of the drive. The left side location is reserved for feedback technology options. The keypad is unaffected by the presence of a techbox. An auxiliary 24VDC power supply input is provided allowing the techbox to be powered separately from the drive. In the event of a drive shut down, the network integrity remains intact.



Figure 2 – 6055 LINKnet Techbox

### Further Reading

AC690+ Drive Instruction Manuals  
DC590+ Drive Instruction Manual

## Product Features

- Available for AC690+ and DC590+ products
- Compact 5H x 3W x 1D inches
- Easy snap on installation
- Eliminates hard wired signal connections
- Standalone processing with built in macros
- Auxiliary power supply input for network backup
- Indicator LED's for Drive and power On status
- Direct tag access for all drive parameters

## Part Number and Identification

The Option can be supplied with the drive or independently.

- DC590+ Drive

Supplied with the DC590+ drive: **590P**/xxxx/xxx/xxxx/xx/**LNET**/xxx/xxxx  
Enclosed in a "Technology Box" for use with the 590+ all Frames: **6055-LNET-00**

- AC690+ Drive

Supplied with the AC690+ drive: **690PB**/xxxx/xxx/x/x/xxxx/xxxx/xxxx/**LNET**/xxx/xxxx

**690P**/xxxx/xxx/xxxx/xx/xxx/ **LNET** /xxx/xxx /xxx/xxxx  
Enclosed in a "Technology Box" for use with the 690+ Size B: **6053-LNET-00**  
Enclosed in a "Technology Box" for use with the 690+ Sizes C+: **6055-LNET-00**

## Ethernet Protocols supported:

LINKnet supports the following Ethernet protocols:

1. Modbus UDP/IP Master for Input / Output support.
2. Modbus TCP/IP Slave – Supports TS8000 and PLCs

## Software Requirements:

1. The software DSE (Drive System Explorer) & DSELite version 3.00 or greater supports LINKnet.

## Hardware supported:

1. The 690+ drive with firmware version 5.x
2. The 590+ drive with firmware version 8.10 or greater only. If the firmware version is 8.9 or less, the drive can be flashed to the latest firmware version using DSELite.
3. The 590+ drives with firmware version 5.x and 7.x drives.

## Chapter 2 - Installation

### Installing the Option

#### WARNING

Before installing, ensure that the drive power is switched off and cannot be switched on accidentally by other personnel.

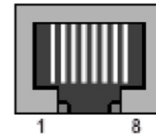
Wait 5 minutes after disconnecting power before working on any part of the system or removing the covers from the drive.

#### Wiring Requirements:

Use only Cat 6 Shielded Ethernet, patch or crossover cable.

#### Cable Connections

PIN	Signal
1	TD+
2	TD-
3	RD+
4	Termination
5	Termination
6	RD-
7	Termination
8	Termination



#### Cable Specifications – patch or crossover

Cable Type	Maximum Node-to-Node Distance (m)
CAT6 Shielded	100

LINKnet operates at the nominal rate of 100 Mbit/s.

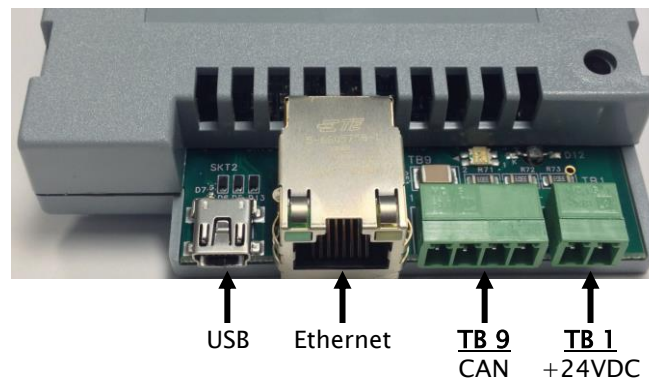


Figure 3 - LINKnet Techbox Connections

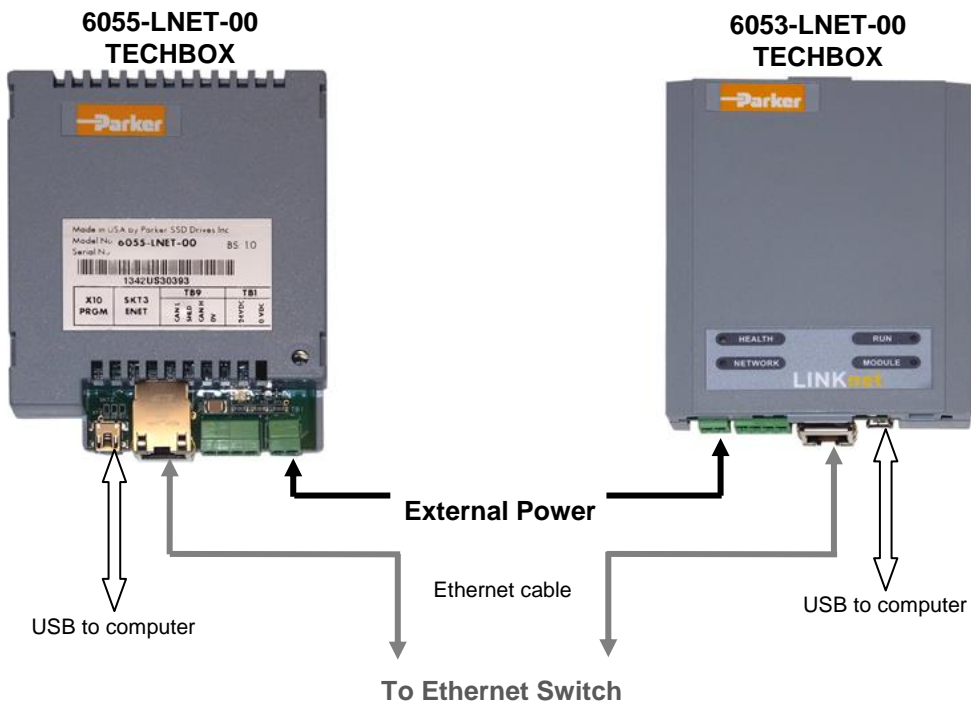


Figure 4 -Sample LINKnet Network

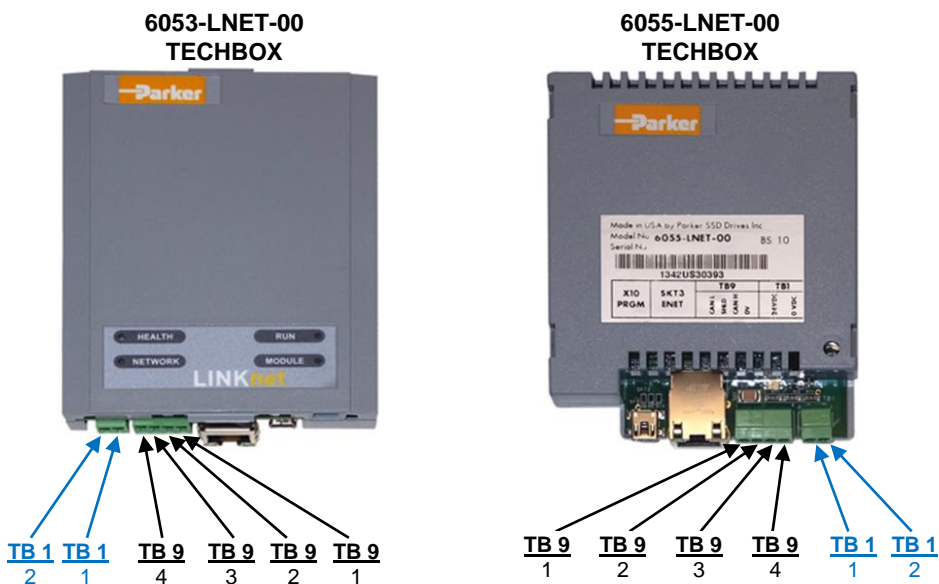


Figure 5 - LINKnet Terminations

**24VDC External Power Terminal block**

Techbox TB 1	PIN 1	PIN 2
6053-LNET-00	+24VDC	0V
6055-LNET-00	+24VDC	0V

(The +24V terminal is always on the inboard terminal)



## Ethernet Connection – (RJ45)

The Ethernet port is primarily intended for peer to peer communications with other modules in the system. Other functions include direct support between the LINKnet module and a PC, ModBus TCP/UDP access to remote I/O, HMI's and PLCs. A computer connected to the Ethernet connector on the LINKnet module or via an Ethernet switch, can be used to install LINKnet configurations or monitor (Go On line) with any element within the LINKnet network. SSD Drives graphic configuration software package Drive System Explorer 890 (DSE890) version 3.0 and all subsequent versions support LINKnet. If you have an older version, updates may be obtained simply by contacting Parker SSD Drives Product Support.

Firmware cannot be installed into a LINKnet module, over Ethernet. The USB port must be used.

## USB Computer Connection – USB mini B connector.

A computer connected to the USB socket on a LINKnet module can be used to install configurations, install firmware or monitor (Go On line) with a LINKnet Techbox. The USB cable can also supply power to the individual LINKnet module. The connector is a USB mini B socket. A USB cable is supplied with the DSE890 software package. The connected LINKnet Techbox can also forward (act as a gateway for) commands to other LINKnet Techbox connected via Ethernet. When using DSE the entire LINKnet network can be viewed using this connection. Since the USB cable can supply power to the LINKnet Techbox, a Powered USB Hub may be required, as some PC's may not have enough power on the USB port, to properly power the Techbox. If the USB cable is connected to the LnTB and it does not have the required amount of power to power the Techbox, the *Module Status LED* will flash in the *Power Fail* mode and communications will not be established.

If using this method to communicate to the LINKnet Techbox, the USB cable **MUST** be connected to the Techbox first, then launch DSE. If DSE is launched first and then you connect the USB cable to the Techbox, communications will not be established. (The USB driver does not get loaded into Windows until the USB cable is connected to the Techbox. Once this driver is loaded into Windows, DSE can detect it. DSE can only detect drivers, if it is closed.)

**DSE must always be closed before connecting the USB cable to the Techbox.**

## External Power Connection (Optional) Terminal Block (TB 1)

The LINKnet Techbox incorporates a switch mode power supply. When the LINKnet Techbox is fitted to the 590+ or 690+ drive, the power will be supplied from the drive. If power is supplied externally from the Terminal Block TB1 connector, the Techbox will be powered from this external supply and not the drive.

*Note: Power requirements: 200ma @24Vdc with a 15 to 30Vdc range. 320 mA @ 15 Vdc and 160 mA @ 30 Vdc.*

## 24VDC External Power Terminal block – 2 pin connector (TB 1)

The plug-in connectors for TB1 are physically different for the 6055-LNET-00 TechBox, and the 6053-LNET-00 TechBox.

Techbox TB 1	PIN 1	PIN 2
6053-LNET-00	+24VDC	0V
6055-LNET-00	+24VDC	0V

(The +24V terminal is always on the inboard terminal)

**CAN peer-to-peer Terminal block – 4 pin connector (TB 9)**

**This option is not implemented yet**

The Can port will support peer to peer communication of run time data between LINKnet Techboxes.

<b>Techbox TB 9</b>	<b>PIN 1</b>	<b>PIN 2</b>	<b>PIN 3</b>	<b>PIN 4</b>
6053-LNET-00	CAN L	SHLD	CAN H	0V
6055-LNET-00	CAN L	SHLD	CAN H	0V

**(The CAN L (pin 1) terminal is always on the inboard terminal)**

## Fitting the TechBox to the frame B AC690+ Drives

### WARNING!

Ensure that all power is off prior to working on the drive

The option is supplied as a “6053-LNET-00 Technology Box” which fits into the front of the AC690+ drive in place of the keypad or blank cover.

- Remove the terminal cover and screws.
- Plug the ribbon cable into the back of the TechBox and into the socket on the AC690+B drive
- Snap the TechBox into place in the recess on the front of the AC690+B
- Make all user-wiring connections. Connect all shields to the ground post on the chassis. Make a connection from the TechBox TB1 ground terminal to the ground post on the chassis.
- Re-install the terminal cover securely with the screws.

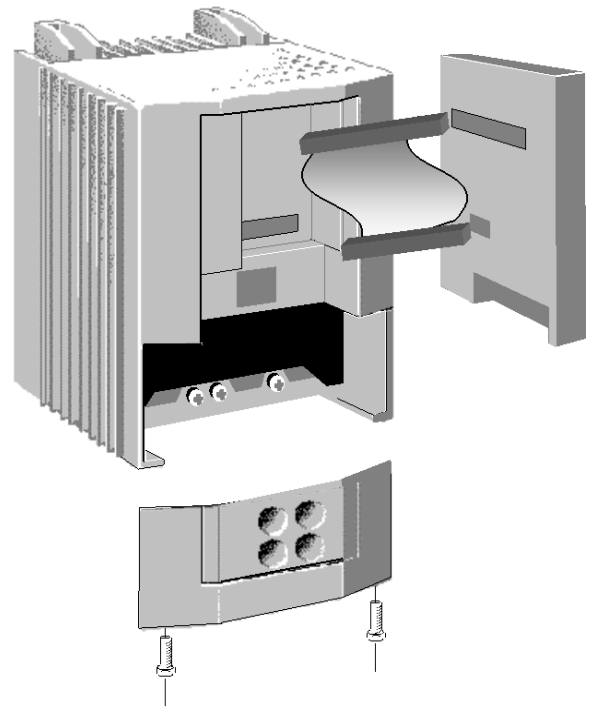


Figure 6 – 6053 LINKnet Installation

**Note:** *If permanently using the keypad with the Technology Box fitted, mount the keypad remotely using the Panel Mounting Kit with part number (6052). The connecting lead enters the AC690+ drive through the gland plate.*

## Fitting the TechBox to a DC590+ and AC690+ frames C and above

The option is supplied as a “6055-LNET-00 TechBox” which fits into the lower right front of the AC690+C - K drive.

**Note:** The 6055-LNET-00 TechBox does not affect the operation of the 6051/6901 keypad.

**WARNING!**  
Ensure that all power is off prior to working on the drive.

- Remove the terminal cover.
- Plug the techbox into the socket located in the lower right side of the AC690+ C-K drive.
- Tighten the screw to secure the techbox to the drive. This also serves as a ground connection for the TechBox.
- Make all user-wiring connections. Connect all shields to the ground post on the chassis.
- Re-install the terminal cover securely with the screws.

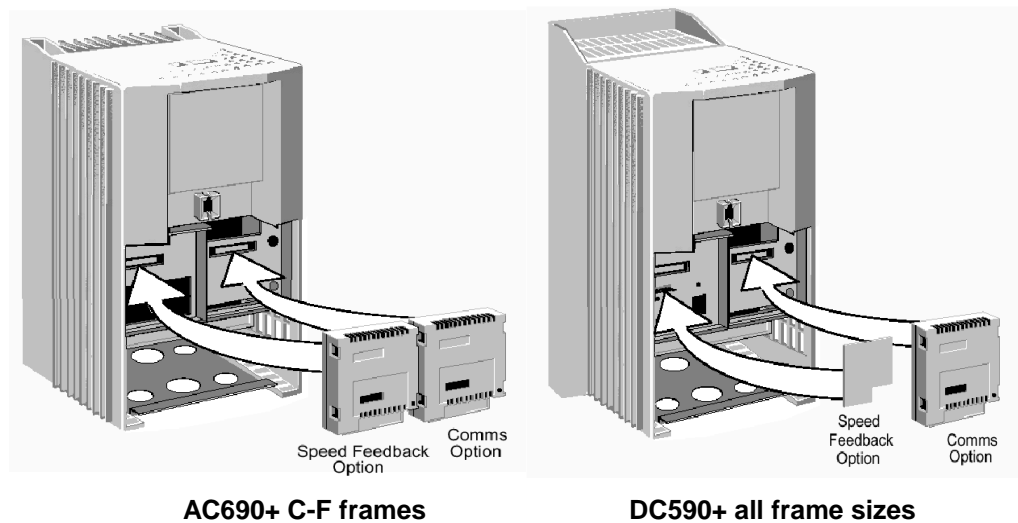


Figure 7 – 6055 *LINKnet* Installation

## Chapter 3 - Initial Set-up

### There are 2 ways to communicate to the LINKnet Techbox: USB & Ethernet

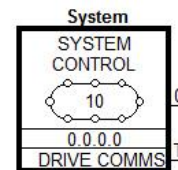
The USB port is primarily intended to use for initial set up of the Techbox and setting up of the IP address. But it can be used to install configurations, install firmware and monitor the entire LINKnet System. All of the nodes in the system will appear in the DSE Module List when using the USB. Also if there are Ethernet issues or IP address conflicts, the USB port can be used to directly connect to each Techbox for analysis. When using the USB for the first time, the USB driver must be installed. Refer to *Installing the USB driver for DSE and the LINKnet Techbox* at the end of this section.

An Ethernet connection can also be used to connect to the LINKnet Techbox. It will have a faster connection than the USB method. A pc can be connected directly to the Ethernet port or it can be connected to the Ethernet switch where all of the modules in the system will appear in the DSE Module List. When communicating to the LINKnet modules via Ethernet, the computer must be on the same subnet and the LINKnet modules. For set up instructions on using Ethernet communications, see page 15 to or if in DSE go to *HELP / LINKnet Support / Setting the computer IP Address for LINKnet access*.

### IP addressing information

Each LINKnet Techbox must have a unique IP address. Each LINKnet Techbox has a unique default shipping address of 192.168.1.xxx. The last 3 digits will be random for each Techbox in the range of 1-127. When the LINKnet TB is powered up in a system and it has the default shipping configuration, it will *self assign* a unique address on each Techbox. At this point DSE can be launched and all of the LINKnet Techboxes will appear in the Module List. (If there are duplicate IP Addresses, communications will not establish between the Techboxes and DSE will not obtain a Module List.) Now the custom configurations can be installed to each individual TB.

In a LINKnet configuration there is a System Control block which contains a place to set the IP address. If no IP address is entered, the default shipping address of 192.168.1.xxx will be used and the TB will be *self assigned* an IP address in the range of 1 - 127.



If an IP Address is entered in the System Control block, it will override the *self assigned* IP address. It is recommended that an IP Address be assigned to each LINKnet TB. It is recommended that the LINKnet configuration address be used as the last 3 digits of the IP address. Thus if the configuration address is 10 the IP address would be 192.168.1.10

### Configuring the LINKnet Techbox IP addressing

There are two ways to set the IP Address. One way is to set the IP Address in the SYSTEM CONTROL function block, which is located in the LINKnet configuration, as shown below. If you enter an IP Address you **MUST** also enter the Subnet Mask address. If the IP Address in the SYSTEM CONTROL block is left at 0.0.0.0, the IP Address which is currently in the Techbox will be used. If an IP Address is set in the SYSTEM CONTROL block, it will override the present IP Address which is in the Techbox.

The remaining way is to use the USB cable and connect it directly to the individual TechBox via the USB port on the Techbox. The USB cable will supply power to the Techbox so it does not have to be fitted to a drive. To use this method, connect the USB cable to the LINKnet Techbox, then launch DSE and go to **COMMAND / REFRESH FULL**. The module will appear in the **MODULE LIST**. Then do a **COMMAND / SET IP ADDRESS**. Enter the desired IP ADDRESS. Then do a **COMMAND / GET INO** and verify this data in the **SCRATCHPAD**. Because of the way the USB driver loads and unloads from Windows, there is a specific procedure which must be followed. Connect the USB cable to the Techbox first then launch DSE. DSE can't be open when connecting the USB cable to the Techbox. The USB driver will not load, thus the

module will not appear in the MODULE LIST. Thus if you are setting the IP ADDRESS on multiple Techboxes, after removing the USB cable from the Techbox, DSE must be closed. Then connect the USB cable to the next Techbox, then launch DSE and repeat the procedure.

The IP address of the Techbox will be set as long as there is no IP address entered in the *System Control* block. It must have an address of 0.0.0.0

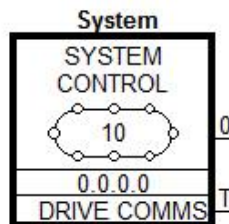
If there is an IP address entered in the *System Control* block it will get over ridden with the set entered address.

## Setting the Node Address

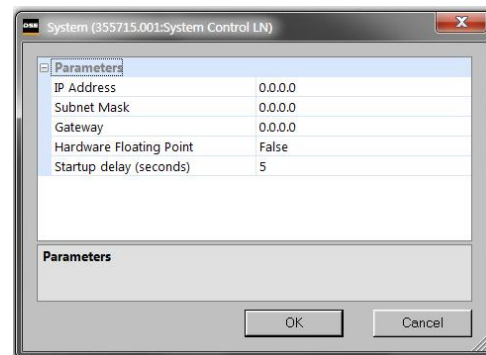
Up to 127 LINKnet nodes can be addressed in the LINKnet configuration. Thus the NODE ADDRESS range is 1 – 127.

To set the *Node Address* go to *EDIT / Net Address* and set the Node Address. The NodeAddress in the example shown below is address 10.

There is no limitation on the IP address, but they all MUST be on the same subnet.

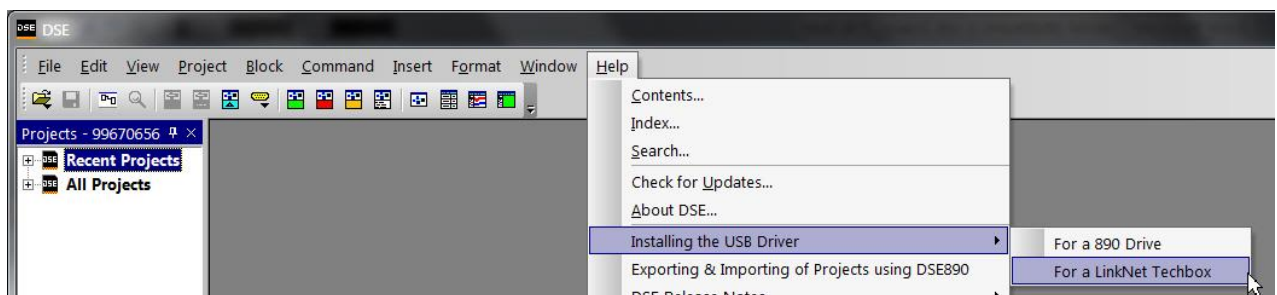


The SYSTEM CONTROL block is located in the LINKnet configuration.



## Installing the USB driver for DSE and the LINKnet Techbox

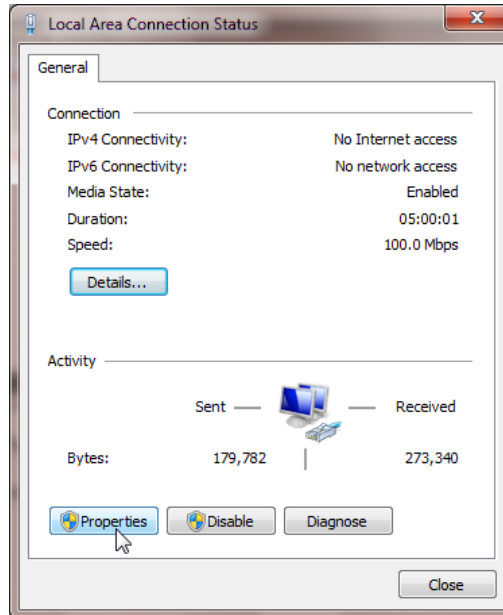
When using the LINKnet Techbox for the first time, the USB **STMicroelectronics Virtual COM driver** must be installed, so DSE can communicate to the LINKnet Techbox. To do this launch DSE, go to the menu on the top, called **Help / Installing the USB Driver / For a LINKnet Techbox**. View this document and follow the instructions.



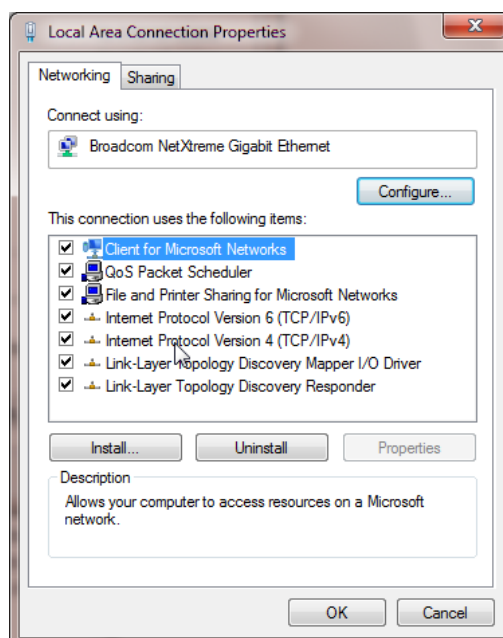
## Setting the computer IP Address for LINKnet access via Ethernet

When communicating to the LINKnet via Ethernet, the computer must be on the same subnet. To change the pc settings:

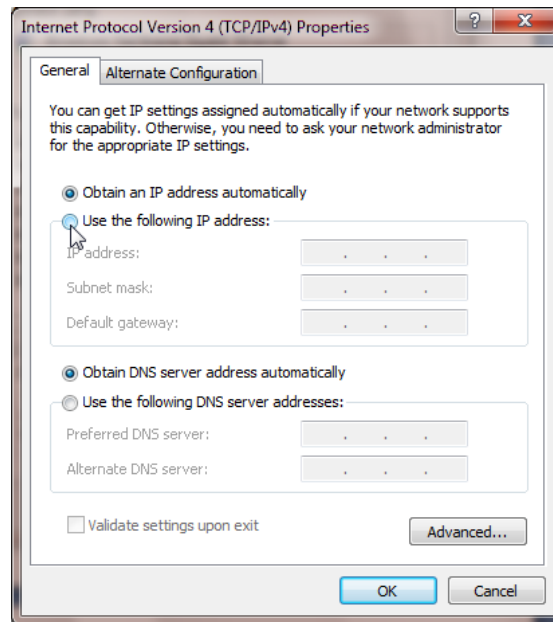
1. From the START menu, open the Control Panel and select “Network and Sharing Center” or “Network Connections” depending on the version of Windows you’re running.
2. In the window that comes up, click on “Local Area Connection”. That should bring up a dialog that looks something like the following:



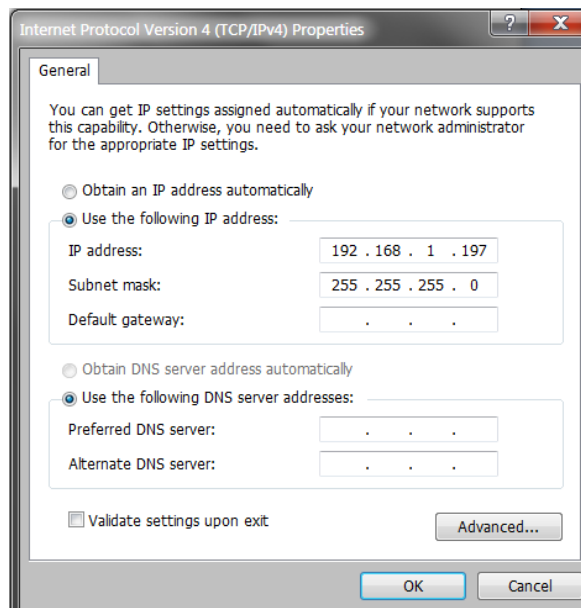
3. Click on the Properties button to bring up the Local Area Connection Properties dialog. On Windows 7 it should look something like this (it will be slightly different for XP):



4. Double click on “Internet Protocol Version 4 (TCP/IPv4)” (“Internet Protocol TCP/IP” in XP) and that should bring up the Internet Protocol Dialog that should look something like:



5. Click on the selection “Use the following IP address” and enter 192.168.1.197 for the IP address and 255.255.255.0 for the Subnet mask. Make sure “Use the following DNS server addresses” is also selected, but you don’t have to enter anything for that. It should look something like:





## Configuring the Drive

### MMI Menu Map

- 1 SETUP PARAMETERS
- 2 FUNCTION BLOCKS
- 3 SERIAL LINKS
- 4 TEC OPTION
  - TEC OPTION TYPE
  - TEC OPTION IN 1
  - TEC OPTION IN 2
  - TEC OPTION IN 3
  - TEC OPTION IN 4
  - TEC OPTION IN 5
  - TEC OPTION FAULT
  - TEC OPTION VER
  - TEC OPTION OUT 1
  - TEC OPTION OUT 2

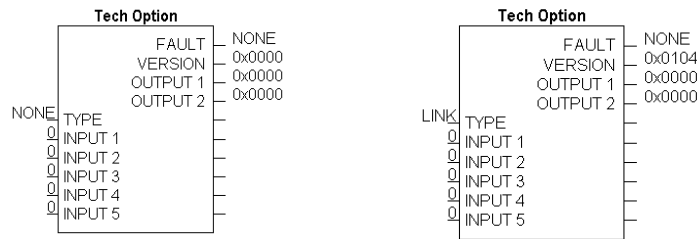
The first step in using the technology option is configuring the drive to accept the TechBox. The keypad (MMI), DSE890 (SSD Drives' device level configuration software), must be used to configure the TEC OPTION function block parameters inside the drive before commissioning the *LINKnet* technology option.

The parameter names/functions in this function block are inter-dependent and will change with different parameter values and various technology options.

The Function Block diagram below shows the DSE890 parameter names, which are also displayed on the MMI if no Option is fitted or an incorrect TYPE is selected for the fitted Option.

**IMPORTANT**

The user must be familiar with navigating through the drive MMI menus, be able to select functions and set values and options. For further reading on this topic, refer to the appropriate drive instruction manual. If using DSE890, the user must be familiar with the software package



Under TYPE, select LINK

## Parameter Descriptions

### TYPE

Selects the type of TechBox.

Range: Enumerated - see below

Enumerated Value : Technology Option

- 0 : NONE
- 1 : RS485
- 2 : PROFIBUS DP
- 3 : LINK
- 4 : DEVICENET
- 5 : CANOPEN
- 6 : LONWORKS
- 7 : TYPE 7

**FAULT***Range: Enumerated - see below*

The fault state of the Technology Option card.

*Enumerated Value : Fault State*

- 0 : NONE: Normal operating mode.
- 1 : PARAMETER: Confirm that tag exists in the *LINK* Configuration.
- 2 : TYPE MISMATCH: Confirm that type of tag is valid.
- 3 : SELF TEST: The self test has failed. Replace TechCard/TechBox.
- 4 : HARDWARE: Hardware error. Replace TechCard/TechBox.
- 5 : MISSING: TechCard/TechBox not installed/

**VERSION***Range: 0000 to FFFF*

The version of the Technology Option. If no option is fitted then the version is set to zero.

**INPUTS (1–5)***Range: 0000 to FFFF*

Not used with the *LINK* Technology Option

**OUTPUTS (1–2)***Range: 0 to 9999*

Not used with the *LINK* Technology Option

**Other Function blocks**

While configuring the “TEC OPTION”, you may also insert other Link function blocks into the TechBox template. This can be done by using DSE890.

**DSE890**

When configuring the “TEC OPTION” function block using DSE890 the TechBox and drive can be programmed completely using the DSE890. Drive System Explorer (DSE890) provides the TechBox templates for the DC590+ and AC690+ drives.

## Chapter 4 - Using DSE Macros and Templates

### Node Addressing the LINKnet Modules

Each LINKnet module must have a unique Node Address assigned to it. The range allowed in DSE is 1 to 127.

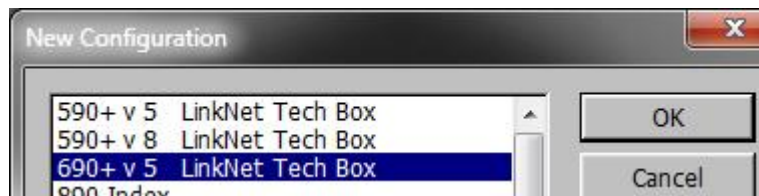
### AC690+ and DC590+ Macros/Templates

The DSE program has pre-configured macros for the AC690+ and the DC590+. These macros contain a template for the specific drive. The internal drive parameters are programmed via the template and are stored in the TechBox/TechCard. The macros are loaded every time the drive is energized; thus all drive parameters are loaded into the volatile memory. DSE version 3.0 or a subsequent revision is required.

Additional *LINK* function blocks may be inserted into the Techbox/Techcard configuration.

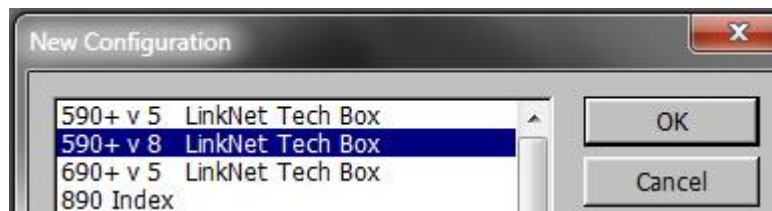
### AC690+ Macro Template

The 690+ macro is selected from the **File/New** drop down menu as shown below. This **690+\_v5** supports a 690+ drive with firmware version 5.x. If the drive is an earlier firmware version, it can be field upgradeable to the latest firmware, by using DSELite.

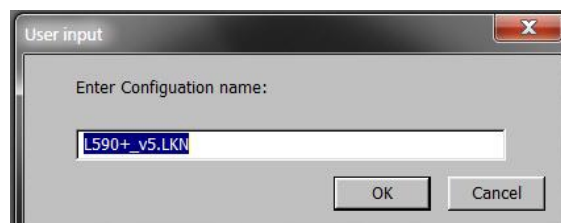


### DC590+ Macro Template

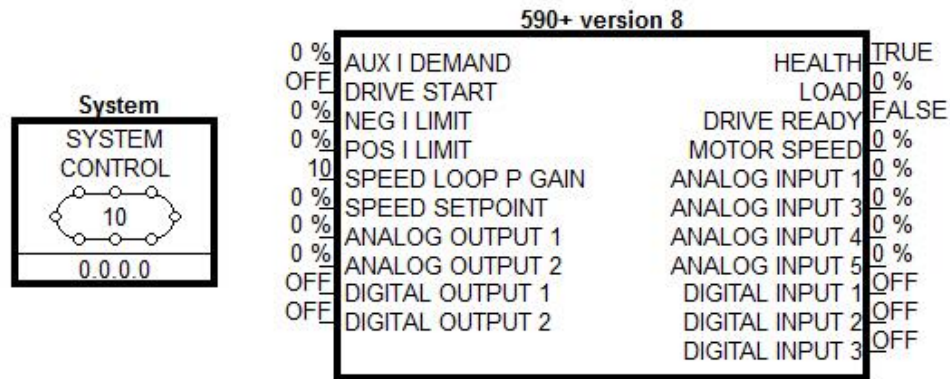
The 590+ macro is selected from the **File/New** drop down menu in DSE. There are two choices: the **590+\_v5 LINKnet Techbox** for a 590+ drive with firmware version 5.x and a **590+\_v8 LINKnet Techbox** for a 590+ drive with firmware version 8.x drive. In DSELite the choices are the **590v5\_f1.LKN** and the **590v8\_f1.LKN**. A **590+\_v5** template will install into a firmware version 5, 7 or 8 drive. A **590v8f1.LKN** template will install into a firmware version 8 drive only. **Note:** When using a v8 drive, make sure the firmware version is at least version 8.10 or later.



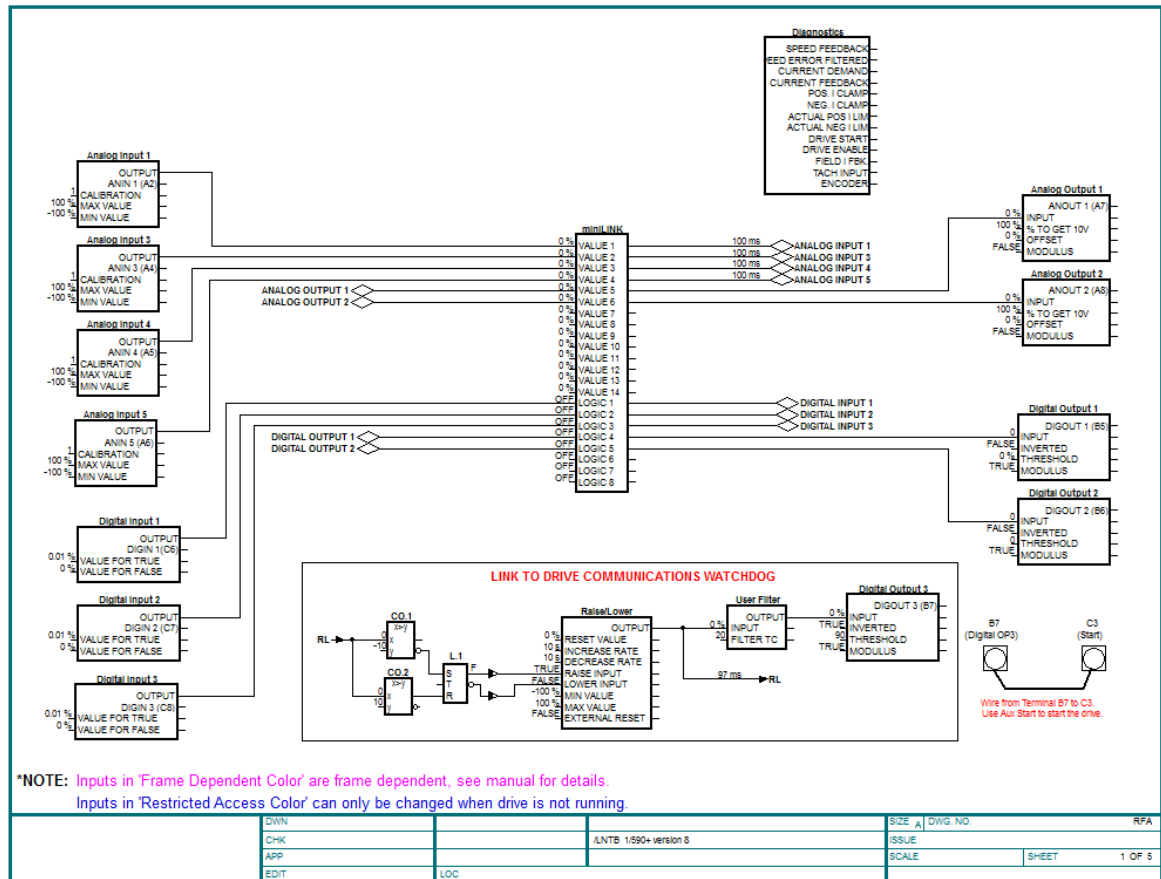
Select the applicable configuration for your drive. The program will prompt you for the module name.



# LINKnet L590+ Version 8 Template



The 590+ macro has some preconfigured inputs and outputs as default. If another tag or parameter is needed, it can be added inside the macro. It is possible to use both the drives' internal function blocks and the Link function blocks. Simply double-click on the macro to access the 590+ internal function blocks.



## Modifying inside the macro

All the drive functions are available through the TechBox. When using some of the DC590+ drives with firmware version 5.x function blocks, it may be necessary to use the Mini-Link block or a 'Native drive' block as the connection point to the TechBox. If a parameter is Orange in color, it must be connected to a Native drive block. The purpose for doing this is to ensure proper triggering of non-system function blocks.

**Note:** The DC590+ drive with firmware version 8.x and the AC690+ drives do not require the use of the Mini-Link block or 'Native drive' block to ensure proper triggering. Drive blocks can be connected to other blocks without a triggering problem.

## Deleting and/or moving an internal connection

The connections inside the macro can be deleted or moved in the same fashion that is used in DSE.— If the connection is only being moved from one block to another block it is not necessary to delete the external macro connection.

## Inserting a new internal connection

Input connection points to the 590+ macro do not need to be connected to the Mini-Link block. When you are adding an output connection point to the 590+ macro it may be necessary to connect to the Mini-Link or system block. If the output connection point is originating from a Native drive block it is not necessary to link the connection to the Mini-Link block.

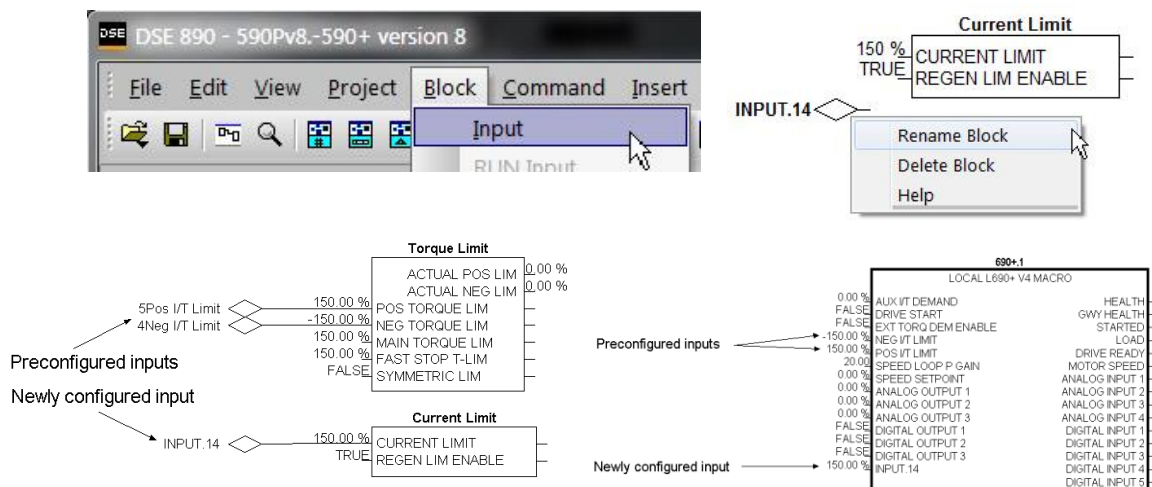
## Inserting function blocks

Link function blocks may be programmed into the TechBox. LINK function blocks can be inserted outside or outside the macro. The function blocks are accessed in the same manner as other Link2 modules.

## Inserting and deleting macro Inputs/Outputs

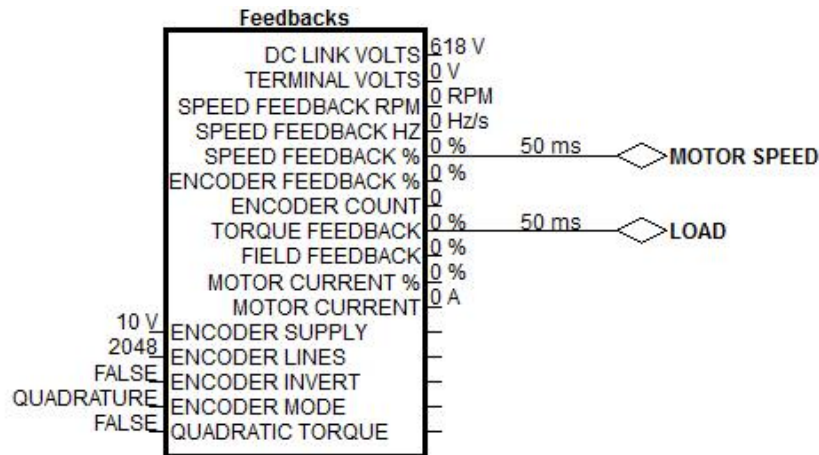
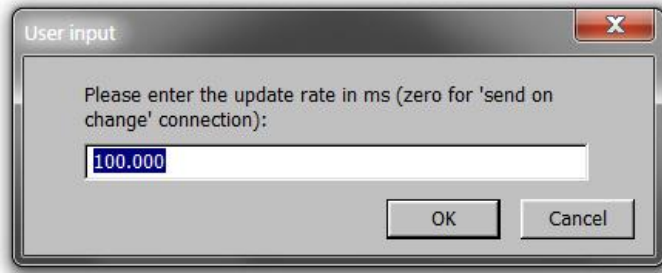
Connections in and out of the macros are made by the following methods.

1. Selecting the inputs and outputs from the BLOCK menu will allow the I/O diamonds to be inserted into the macro. The diamond shaped Input and Output tags can be dropped anywhere inside the drive macro. Drawing a link from the Input/Output diamond to the desired connection point will make the connection to outside the macro.
2. Highlighting the tag and pressing the "DELETE" key will delete inputs or outputs. Prior to deleting the tag, be sure to disconnect all external connections to the macro.

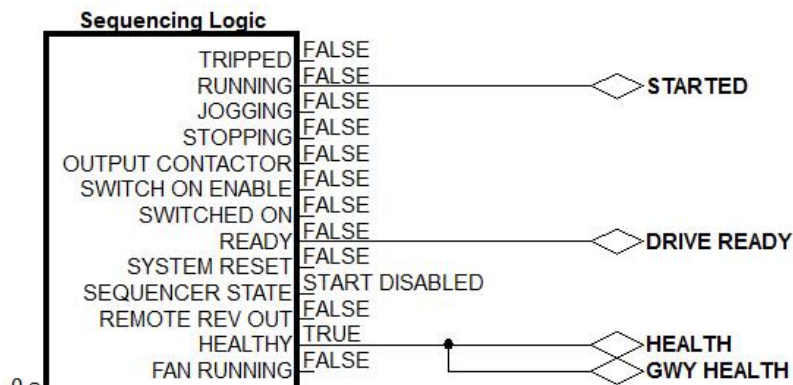


*Note: Internal tags do not get a module address or slot address. The tag appears as a connection point on the outside of the macro. Right mouse clicking on the diamond will allow you to change the name of the tag. This name will appear inside and outside the macro. The number preceding the tag name controls the order of appearance on the macro outside connection points. The number may be changed in the same manner as changing the name of the tag. Input connection points to the 590+ macro do not need to be connected to the Mini-Link block. When adding an output connection point to the 590+ macro it may be necessary to connect to the Mini-Link or system blocks.*

3. Certain output tags will require an entry for the connection speed. The faster connection speeds require more of the CPU heap usage. If too many fast connections are made, it may be possible to run out of CPU heap and cause an "L-Error" fault. Keep fast connections to a minimum.

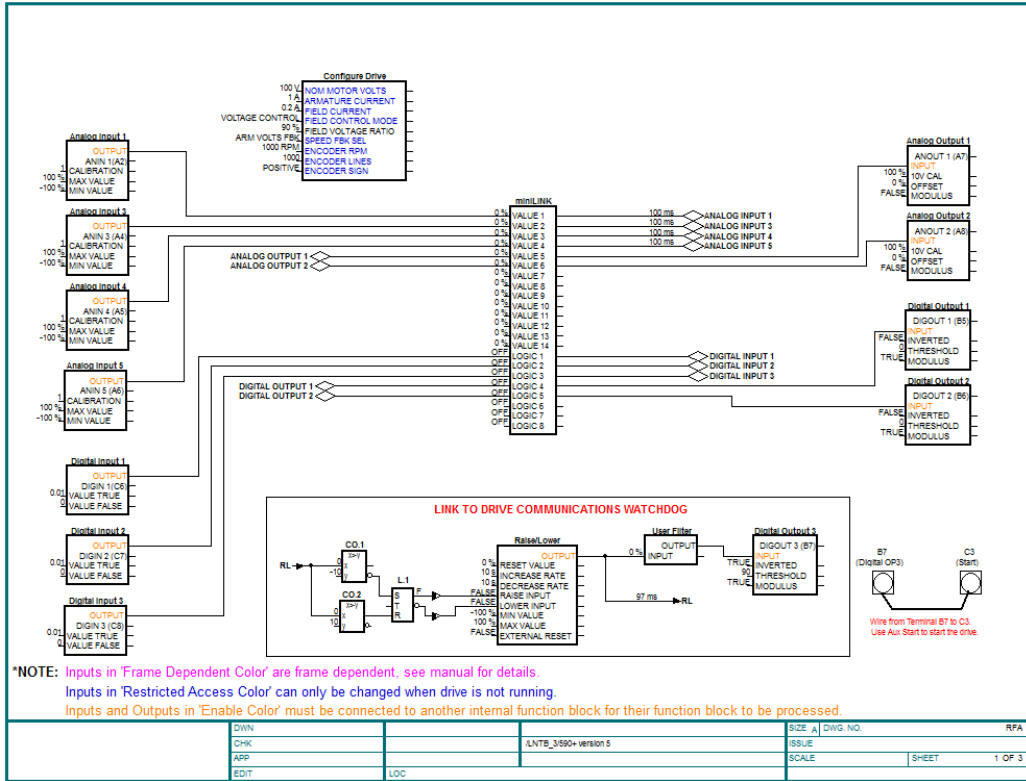


4. A Digital Input or Output will not require a connection speed as they are updated on a change of state only. Meaning that if the state is always True, an Output will not be sent until the state changes to a False. The Digital Outputs are scanned at a default rate of 100 ms. This update rate can be changed by right mouse clicking on the connection line and selecting Update Rate.

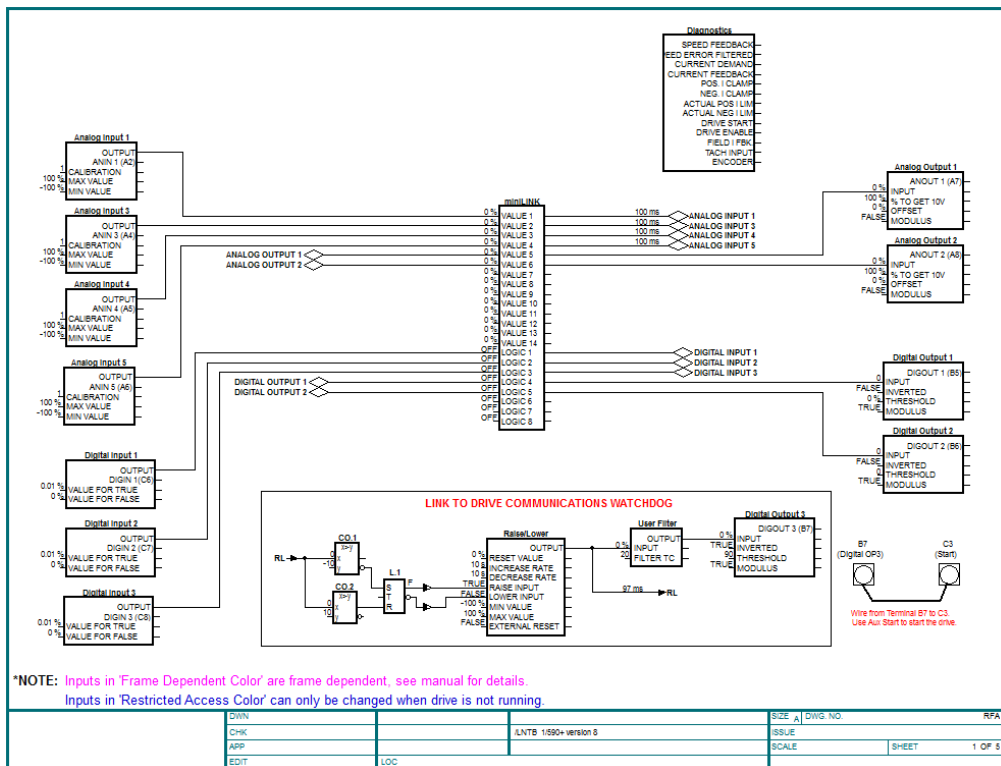


# Using Drive I/O

Drive analog and digital inputs are available for use as I/O for the *Link* system. The DC590+ drive firmware version 5.x requires the use of the MiniLink or system function blocks. The DC590+ drive with firmware v 8.x and the AC690+ drive don't require the use of the MiniLink or system blocks.

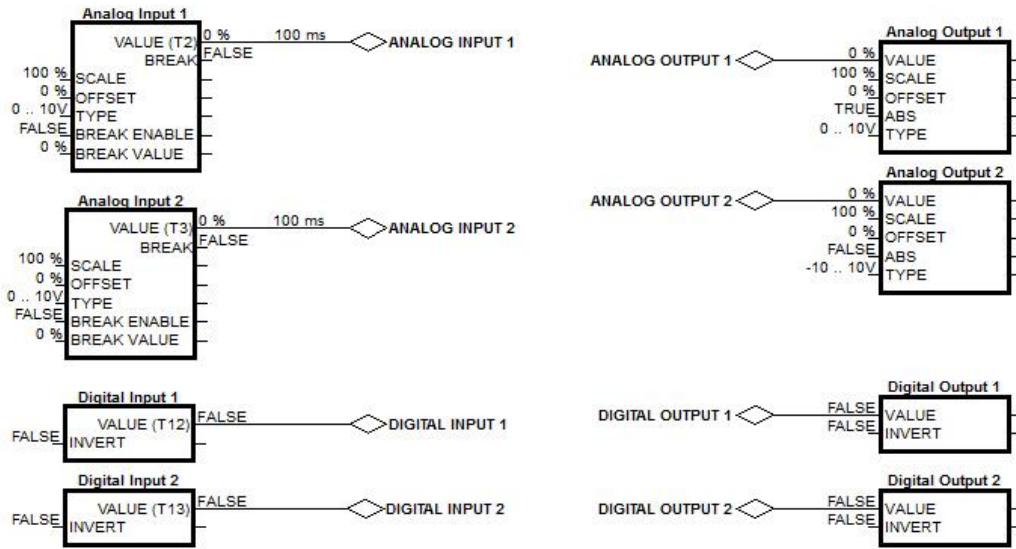


DC590+ Version 5.x Analog and Digital I/O



DC590+ Version 8.x Analog and Digital I/O

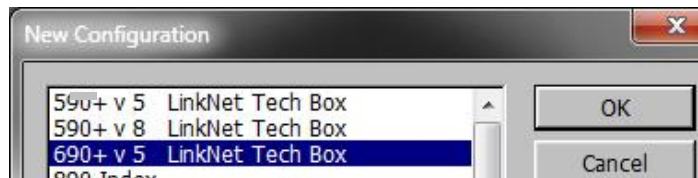




AC690+ Analog and Digital

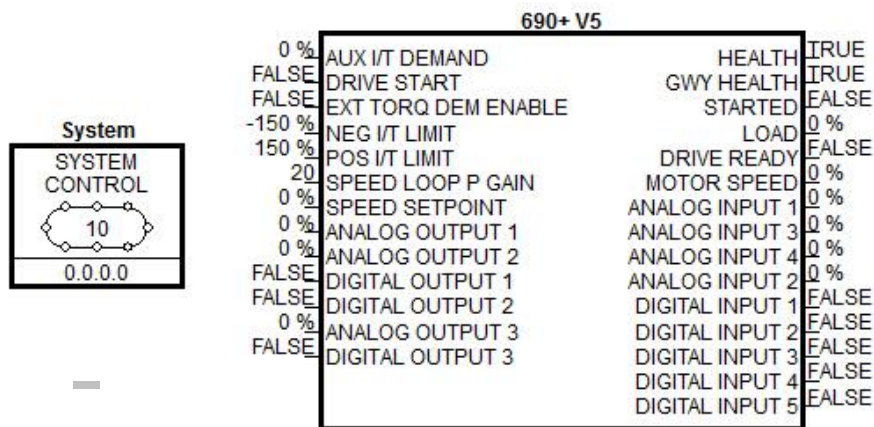
## 690+ Macro Sample Configuration

Select the 690+ template from the “FILE / NEW” menu.



After completing the above steps you should see the 690+ macro without any Link connections as shown below.

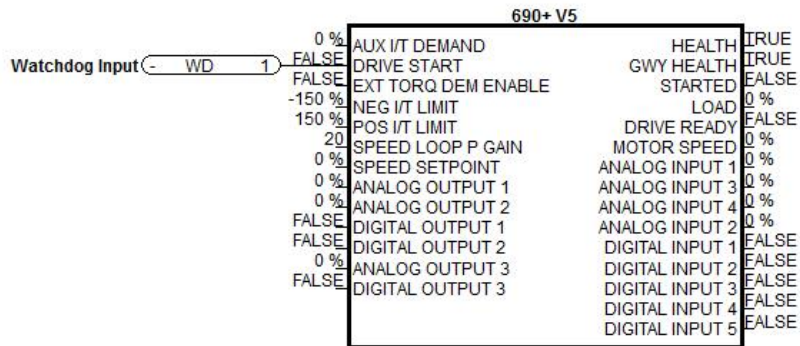
## LINKnet L690+ version 5 Template





## Watchdog Circuit

It is recommended that a Watchdog Circuit be implemented in each LINKnet configuration to stop the drive if there is a loss of Ethernet communications. Presently if there is a loss of Ethernet communications on the LINKnet drive, it will continue to run and not fault. Within DSE there is a WATCHDOG INPUT function block located in the BLOCK MENU. It can be connected to the DRIVE START Input in place of an INPUT Slot. It must be updated with a logic True signal. If 5 seconds has passed and it is not updated with a logic True, the Output of the block will go False and the drive will stop and not fault. This WATCHDOG can also be connected to a Digital Output which can be monitored by the user to take further action. For more information on this function block, see the Help Data sheet within DSE.

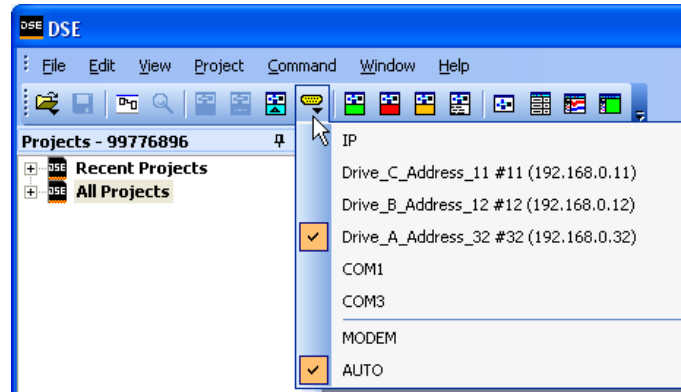




## Chapter 5 – Connecting to the LINKnet Techbox

There are two ways to connect to LINKnet Techbox network. One way is using the USB port and the other way is via Ethernet. The recommended way is the Ethernet, as it is faster. The USB port can be used if there is a problem connecting via Ethernet.

To use the Ethernet connection the pc must be set up to be on the same subnet address as LINKnet. This setup procedure is listed on page 8 of this manual. Once this setup is complete connect the pc's Ethernet cable to a device which is on the LINKnet communications network such as a switch. Then launch DSE. Go to the yellow Serial port Icon and select it. All of the modules which are on the LINKnet will be shown along with the IP Address of each module. Also shown will be which module the Ethernet is connected to.



In the example shown the Ethernet is connected to 'Drive\_A\_Address\_32'. There are 3 modules on this Ethernet. The 'checked box' shows which module DSE is connected via the Ethernet.

The *Module List* will look like the picture shown. The \* indicates which module, the Ethernet is connected to.

Module list							
Adrs	Name	Library	Status	CPU %	Heap %	Msg/s	Errs
*0032	Drive_A_Address_32	LNTB v1.1	OK	5.1	12.2	989	0
0012	Drive_B_Address_12	LNTB v1.1	OK	0.0	2.7	1021	0

**CPU % (Peak)** indicates the amount of CPU activity, or how busy the microprocessor was since the last execution of the module list.

**Heap % (Peak)** indicates how much RAM(SRAM) the modules CPU has used since the module list last entered the OK state & began executing the installed configuration.

**Msg/s ( Messages/second)** Is the average number of Input Messages per second of network traffic for that module

**Errs** indicates the amount of Communication Errors since the Module List was refreshed.

## Command / Get Info

A *Command / Get Info* displays the modules *IP Address* as shown below.

It also shows the firmware *build* (shown 1.1) and the firmware *boot loader* (shown 1.1) information.

```
Scratch Pad - 99304132:INTE-5/LA0355050-LN
-----Module Information----- Tue Jul 01 12:18:38 2014
Serial number: 1342-US-9-0404, MAC: 0.13.70.169.97.147, IP: 192.168.1.40
Hardware: LINKnet TB (ROM 12.4, rev. 1 hardware)
Library: LINKnet Techbox (version 1.1 firmware) - RD470905.001, build 1.1, loader 1.1
Project: 99304132:LINKnet Example
Configuration: LN590P-40
Modification: 43
Permanent address: 40
Working address: 40
Persistents used: 19.0% (456 of 2400)
Storage used: 25.8% (264 of 1024 pages)
CPU used: Recent: 0.8%, Peak: 0.8%
Heap used: Static: 69.4%, Peak: 69.4% (5796/5955 of 8579 nodes)
Messages/s: 0
Status: OK, drive not started
```

## Installing and updating a configuration for the first time

---

1. Using DSE obtain a *Module List*. This *Module List* will show all of the modules in the network.
2. Open the LINKnet configuration which you want to install. Make sure the correct motor data is entered in the *Motor Data* block for the 690+ or in the *Configure Drive* block for the 590+ drive.
3. In the *Module List* highlight the module where you to install this configuration.
4. Do a *Command / Install at Selected*. This will install the Application configuration and all of the drive settings, except the *Frame dependent* parameters into the Techbox. Frame dependent parameters appear magenta in color in the configuration.
5. Perform and *Autotune* on the drive.
6. Do a *Parameter Save* either from the Drive MMI keypad or from DSE by doing a *Command / Parameters Save*.
7. Now to get the Product Code, Frame dependent and Autotune parameters back into the DSE configuration, do a *Project / Update*.
8. Open the configuration and make sure these Autotune parameters did get updated into the configuration.
9. To get the configuration and the Product Code installed into the Techbox, do a *Command / Install at Selected* or *Full Install at Selected*.

**Note: For Cloning of drives, see page 29**

## Cloning of Drives

---

If the above procedure is followed, the **P CODE** (Product Code) of the drive, will be stored in the LINKnet Techbox, for that specific configuration. The P CODE is the Power Output rating of the drive, including *frame dependent and reserved menu* parameters, which are specific to each individual P CODE.

The *frame dependant* parameters appear **magenta** in color, in the configuration.

If this 'programmed' Techbox is removed and then installed on another or new drive of an **identical** P CODE, all of the parameters including the *frame dependent & reserved menu* parameters will be installed into this new drive. Thus this new drive will be an identical clone of the original drive.

If this 'programmed' Techbox is removed and then installed on another or new drive with a **different** P CODE, **none** of the *frame dependent* or *reserved menu* parameters will be installed into this new drive. Only the basic parameters will be installed.

Thus motor data or other parameters will not get installed into this new drive. The drive may not operate properly or damage to the motor may occur. These motor parameters should be set in the drive and an Autotune should be performed.

If you want to get this new drives P CODE back into the Techbox:

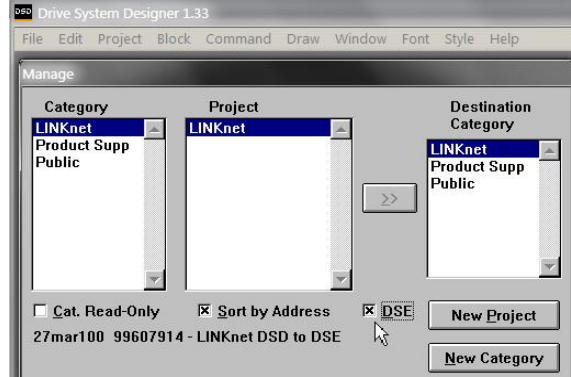
1. Set the required motor data in the drive, then perform an Autotune
2. Do a *Parameter Save* either from the Drive MMI keypad or from DSE by doing a *Command / Parameters Save*.
3. Now to get the Product Code, Frame dependent and Autotune parameters back into the DSE configuration, do a *Project / Update*.
4. Open the configuration and make sure these Autotune parameters did get updated into the configuration.
5. To get the configuration and the Product Code installed into the Techbox, do a *Command / Install at Selected* or *Full Install at Selected*.



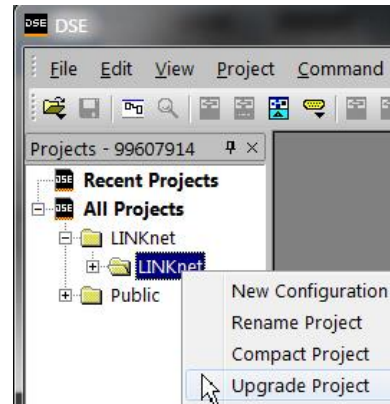
## Chapter 6 – Extracting the DSD Configuration data

If you have an existing DSD project which contains 590+ and 690+ drives, you can extract the motor data as well as all of the configuration data and Import it into a DSE LINKnet configuration. (Parameter data only, will be imported into the LINKnet template. Connections lines' will NOT be imported). Thus the Autotune data can be preserved and an Autotune will not have to be performed on the LINKnet drives. Follow this procedure:

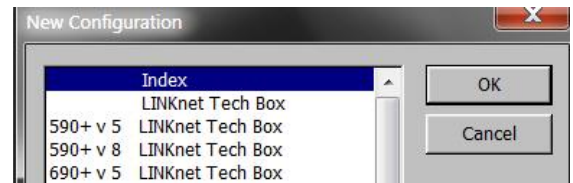
1. Launch DSD (Drive System Designer) and select PROJECT / MANAGE. Locate the DSD PROJECT which is being converted into a DSE LINKnet project. Select the CATEGORY and then the PROJECT.
2. In this example the PROJECT selected is LINKnet. To get this project to appear into DSE, select the "DSE box" as shown.



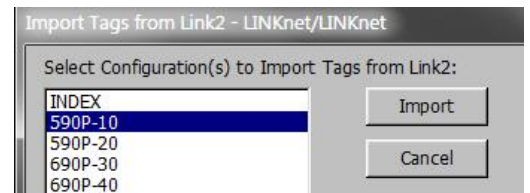
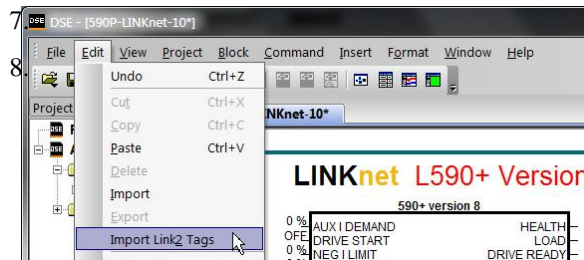
3. Launch DSE and go to ALL PROJECTS as shown. The DSD project now appears as shown here in this LINKnet example.
4. Then right mouse click on the LINKnet project and select UPGRADE PROJECT. This will upgrade the DSE project to the latest, thus all of the current DSE configurations will be available including LINKnet.



5. Then right mouse click on the LINKnet project and select NEW CONFIGURATION. Then select the appropriate 590+ or 690+ LINKnet configuration. Name the configuration.



6. With the configuration open, select EDIT / IMPORT LINK2 TAGS. Then select the DSD configuration which you want to Import. Parameter data only, will be imported into the LINKnet template. Connections lines' will NOT be imported.







## Chapter 7 – Extracting Drive data

---

If you have a 590+ or a 690+ drive and you want to extract the native drive tag parameter data in to a LINKnet configuration, this can be done. The data extracted, will be the drive native parameters only. No connection lines will be drawn or exteacted. Also if this drive has a Link Techbox on it, none of the VM (Virtual Machine) Link parameter data will be extracted. Thus the Autotune data can be preserved and an Autotune will not have to be performed on the LINKnet drive.

This is the procedure:

1. Launch DSE890 version 3.01 or later and open the LINKnet configuration which you want to have the drive parameters extracted from the drive. The configuration type must match the drive type, meaning that if the drive is a 690+ the LINKnet configuration template must be for the 690+.
2. Connect the RS232 Comms cable to the P3 port of the drive. (This is the same comms cable used when using DSElite and communicating to a standard 590+ or 690+ Digital drive).
3. Do a COMMAND / REFRESH FULL and view the message in the Scratchpad to make sure DSE890 is communicating to the drive. There should be a message something like:  
*590P version 8.10 (connected, drive NOT running).*
4. Do a COMMAND / EXTRACT DRIVE PARAMETERS.
5. Do a FILE / SAVE. The native drive parameters have now been updated into the configuraton.



## Chapter 8 – Troubleshooting

**6055-LNET-00  
TECHBOX**



**6053-LNET-00  
TECHBOX**



### Health and Run LED's

Health and Run are drive functions and are not associated with the operation of the technology feature.

On the AC690+ frame B the Techbox is mounted in place of the keypad or blank cover. The Run and Health LED's from the keypad are replicated on the face of the Techbox. The bottom two LED indicators are for the Module and Power On status.










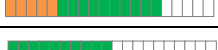







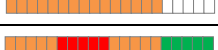
On the AC690+ frames C and above and DC590+ the Run and Health LED's are on the drive itself. Located on the TechBox are 2 LEDs that indicate the Status of the Module and the Power on.

### Power On LED

This indicates that the LINKnet Technology Box Option has power applied to it.

LED STATE	FAULT	DESCRIPTION
OFF	No Power	Apply power to drive or supply external power via terminal connector TB1.
ON (Red)	None	Module has power applied to it.

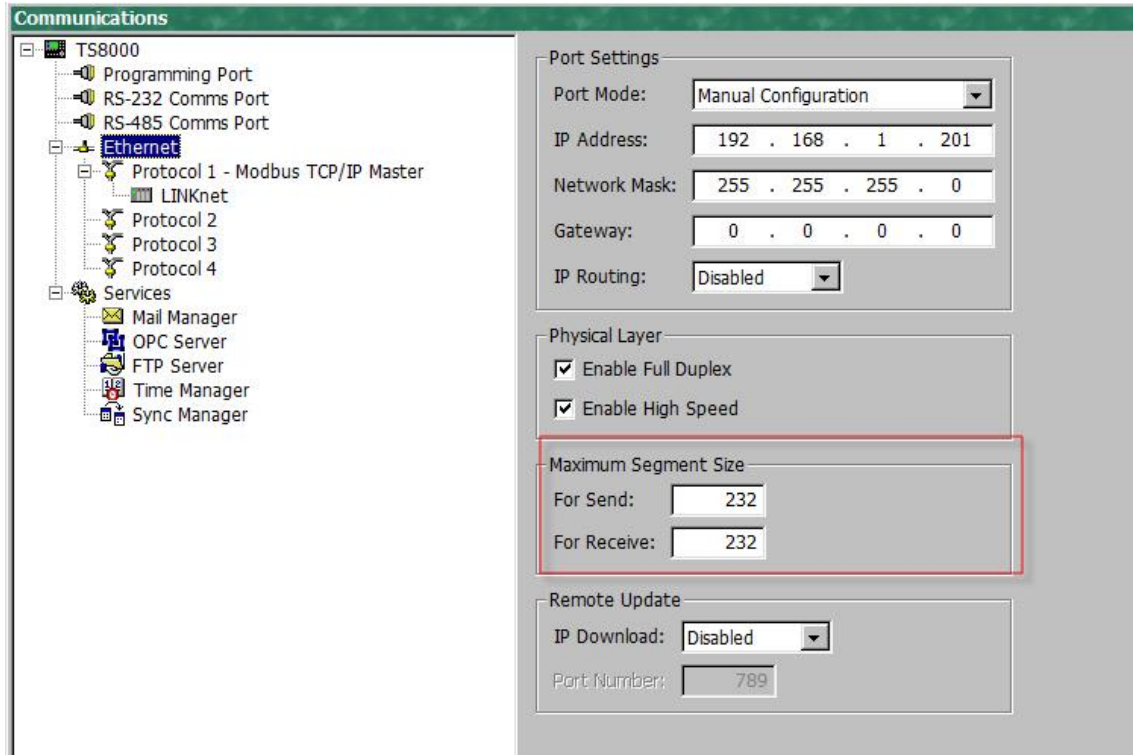
## Module LED Status

NCP State	Techbox State	LED Indication – 1 second period <sup>E</sup>	Blink Code (1second <sup>E</sup> )
0 Initializing	Initializing	Green 10 % : Off 90 %	
1 Halt	Config	Red 95% : Green 5%	
2 No Config	Fault	Red 50% : Off 50%	
3 L-Error	Fault	Green 50% : Red 50%	
4 H-Error	Fault	Orange 50% : Red 50%	
5 Self Test Fail	Fault	Green 50% : Orange 50%	
6 Shutdown **	Stopping	Green 30% : Orange 30% : Red 30% : Off 10% (over a 8 second period)	
7 OK	Running	Green 95% : Off 5%	
8 Power Fail disabled **	Running	Orange 25%:Green 50%:Off 25% (a very slow blink over a 2 second period)	
9 Network Failure	Running	Green 50% : Off 50%	
A Checking Network	Starting	Green 25% : Off 75%	
B Peer Halted	Starting	Red 50% : Green 35% : Off 15%	
C Duplicate Address	Fault	Green 75% : Red 25%	
- Debugging	Fault	Red 25% : Off 75%	
- Identify USB power *	Running	Orange 25% : Off 75%	
- Identify drive power *	Running	Orange 50% : Off 50%	
- Identify External power *	Running	Orange 75% : Off 25%	
- Hardware Initialization	Fault	Orange 25:Red 25:Orange 25:Green 25	
*When using DSE and a COMMAND / IDENTIFY is performed, the LED will flash at this Blink Code indicating where the Techbox power is coming from, either the USB port, drive power or External power.			
** To clear this fault all power must be removed from the Techbox and the USB cable must not be disconnected from the Techbox.			
<sup>E</sup> LED blink duration is 1 second, except as noted			

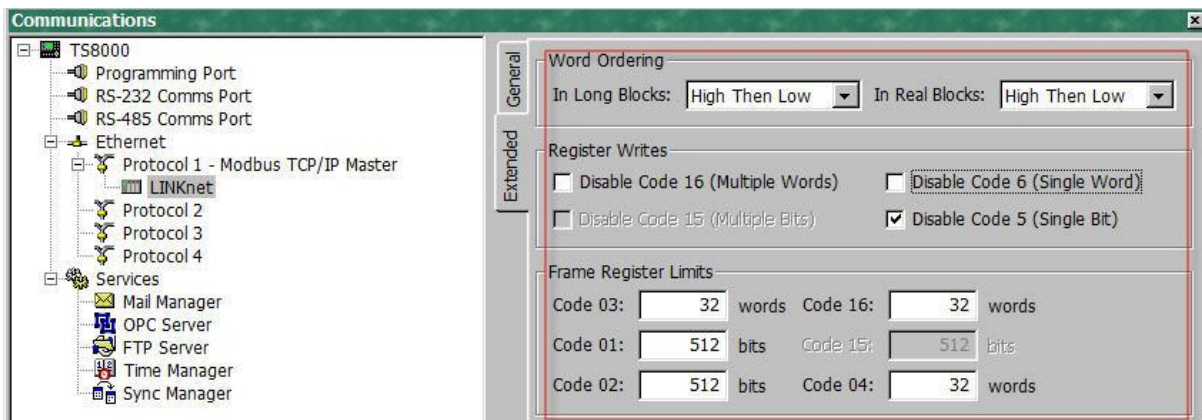
## Chapter 9 – Programming TS8000

### Required Modbus Settings

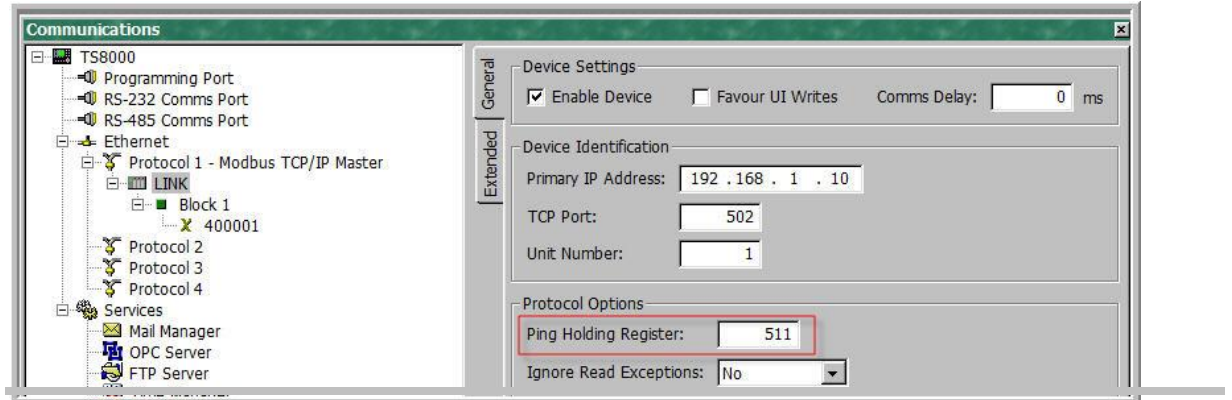
There are some settings / limits that are required for the TS8000 communications.  
The *Maximum Segment* (Ethernet packet) size is 232:



In the *Extended Settings*, the Word Ordering, Register Writes and the Frame Register Limits need to be set as shown below:



For each LINKnet module the *General / Ping Holding Register* must be set to 511. If set to 0, this disables it. Either setting is acceptable.



#### NOTES:

1. When powering up the TS8000, the outgoing data is only sent once to the remote devices. If the TS8000 powers up first or before the other devices, the TS8000 will send this outgoing data before the other devices have time to power up and they will not receive any of this data. To solve this issue the TS8000 must power up last or set up the command word to resend the data to the TS8000.
2. The TS8000 only sends the same data value, 1 time. Thus if a value of 10 is sent, it will not re send this value of 10 again even if it is requested to. The value must be changed to a different value like 11, then the value of 10 can be sent.
3. It is recommended that the TS8000 sends 32 bit values to the LINKnet Techbox, instead of 16 Bit values, as both devices are 32 bit. Set it up for "Word is Long".
4. Within the LINKnet Techbox, it is recommended not to access the Remote I/O data, faster than 5 ms.

## Example: Configuring a TS8000 to communicate to a LINKnet Techbox

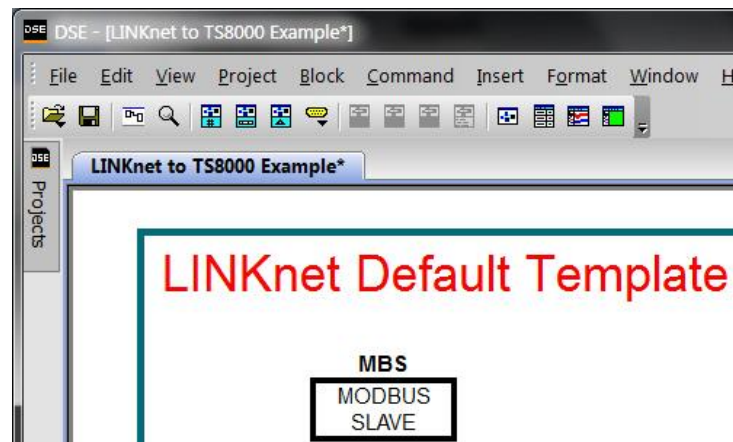
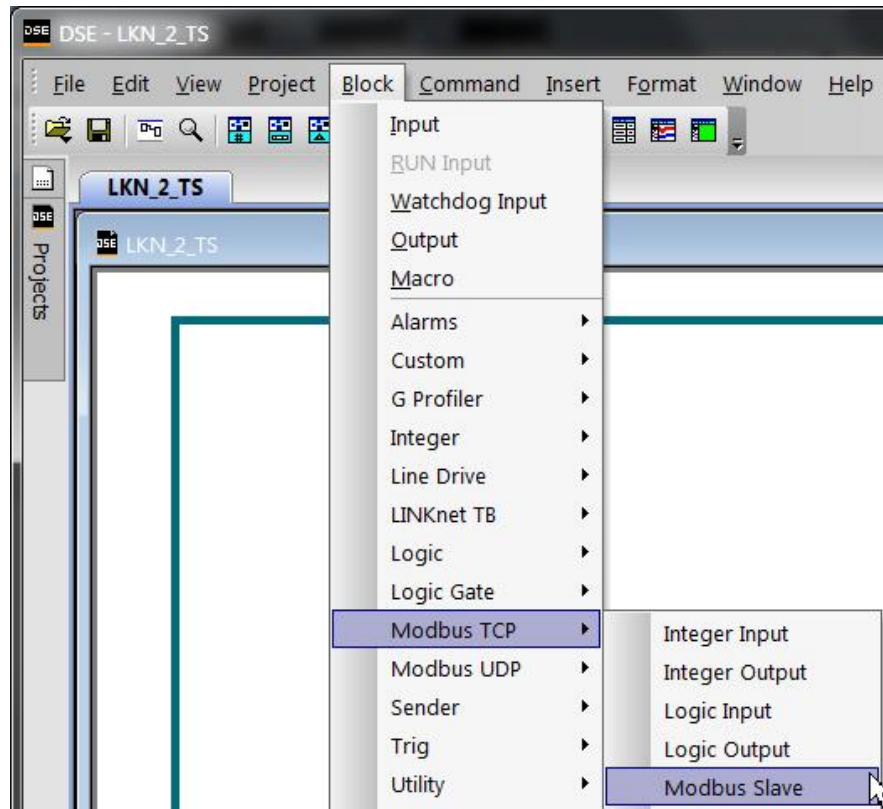
### Step 1: Configuring the Modbus Slave Option using DSE

#### Step 1.1: Inserting an Modbus Slave Function Block

(The 'DSI' & 'DSE' Example discussed in this manual is located in the directory C:\SSD\_LINK\HELP\WIN3. The files are called: LKN\_2\_TS.DSI & LKN\_2\_TS.LKN.)

Display your configuration page. Click on the Block menu at the top of the screen.

1. Move the cursor down to select "Modbus TCP" and select "Modbus Slave".
2. Click to attach the block icon to the cursor. Move the icon to where you want on the screen. Click again to release the icon.



## Step 1.2: Attaching Fieldbus Connectors

Seven fieldbus connector types are available:

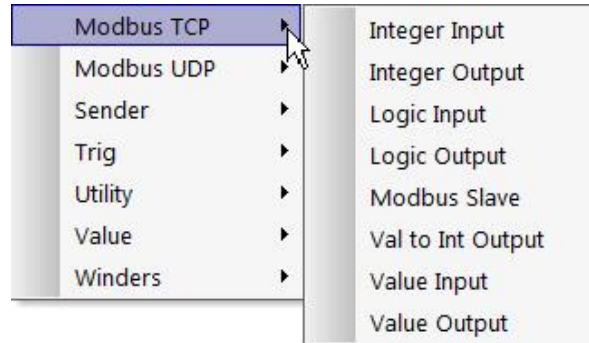
- Logic Input
- Integer Input
- Value Input
- Logic Output
- Integer Output
- Value Output
- FB Val to Int Output

**Input connector:** the data is sent from the TS8000 to LINKnet

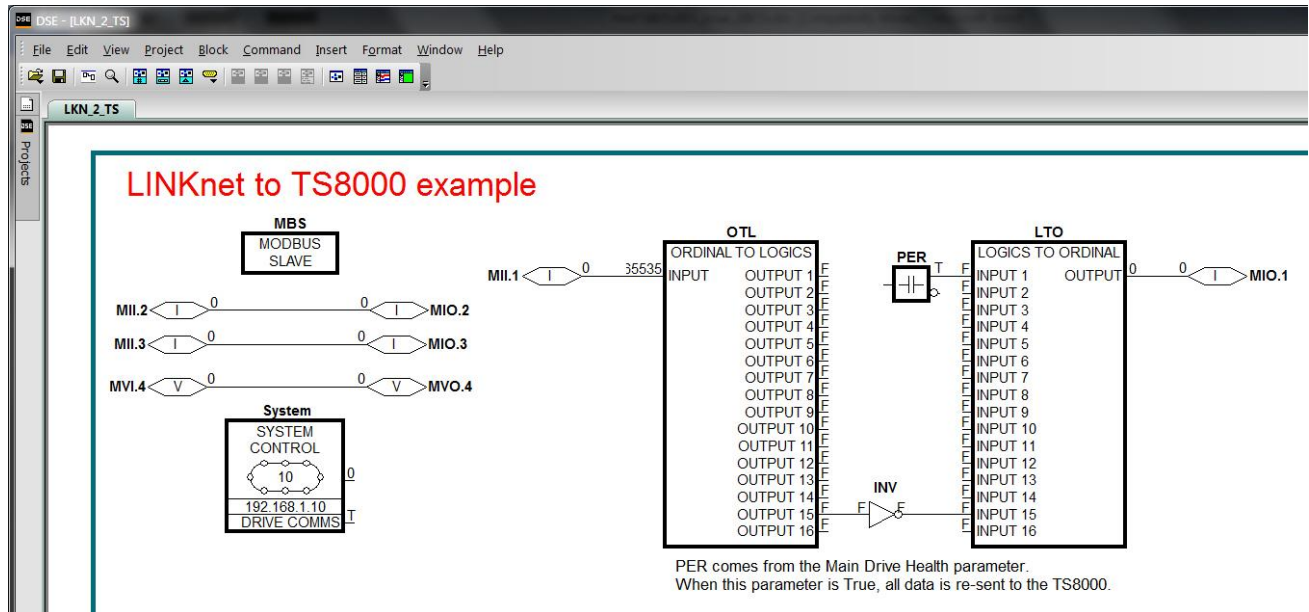
**Output connector:** the data is sent from LINKnet to the TS8000

The fieldbus connectors must be added before they will appear in the EtherNet function block.

The function block and connectors



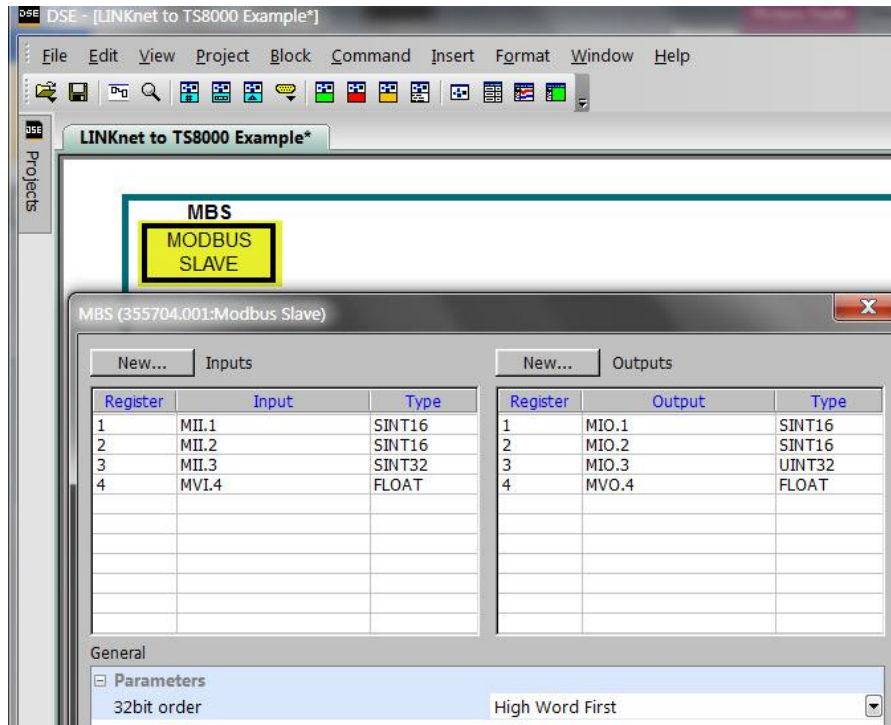
This example shows that *Integer Inputs & Outputs* were added along with a *Value Input & Output*.





## Step 1.3: Configuring the Fieldbus Connectors

Double-click on the function block to display the dialog below. The fieldbus connectors (inputs and outputs) are assignable in the function block along with their data type to/from the TS8000



“32bit order” is set to “High Word First”. This refers to how 32-bit data types, i.e. SINT32, UINT32 and FLOAT are encoded on Ethernet.

- **Low Word First** is sometimes referred to as “Modicon Mode” and is used when the least significant 16-bits are sent in a lower register number than the most significant 16-bits, i.e. Little-endian.
- **High Word First** is sometimes referred to as “IEEE Mode” and is used when the most significant 16-bits are sent in a lower register number than the least significant 16-bits, i.e. Big-endian. This mode must be selected when connecting to the TS8000 HMI.

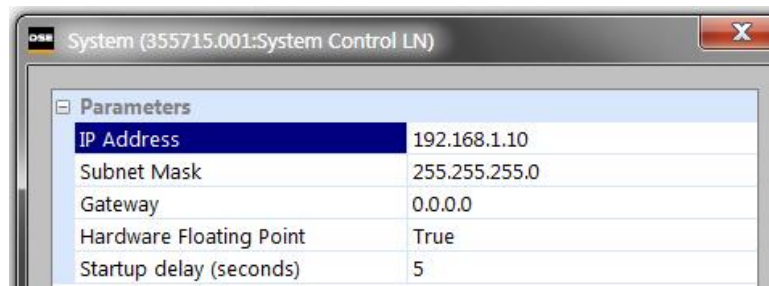
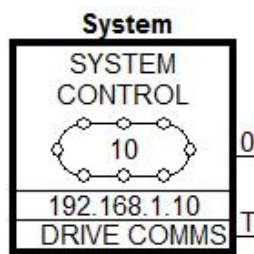
## DSE Data Types

Data Type	Description	Range
LOGIC	Logic	False (F) and True (T)
INTEGER	32-bit signed integer	-2,147,483,648 to 2,147,483,647
VALUE	32-bit fixed point value	-32768.0 to 32767.9999

## Ethernet Data Types

Data Type	Description	Range	Bytes Used
SINT16	16-bit signed integer	-32,768 to 32,767	2
SINT32	32-bit signed integer	-2,147,438,648 to 2,147,483,647	4
UINT16	16-bit unsigned integer	0 to 65,535	2
USINT32	32-bit unsigned integer	0 to 4,294,967,295	4
FLOAT	32-bit IEEE-754 floating-point value	1.19209290e-38 to 3.4028235e+38	4

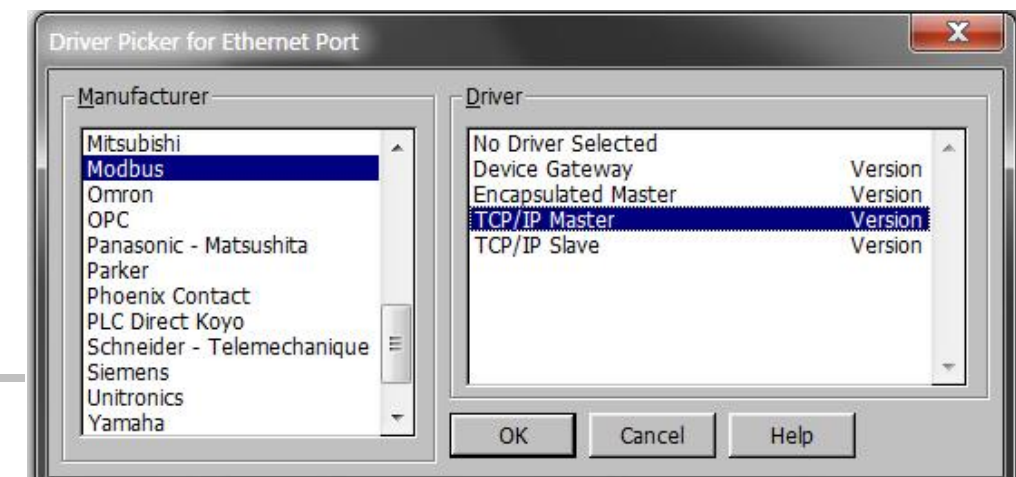
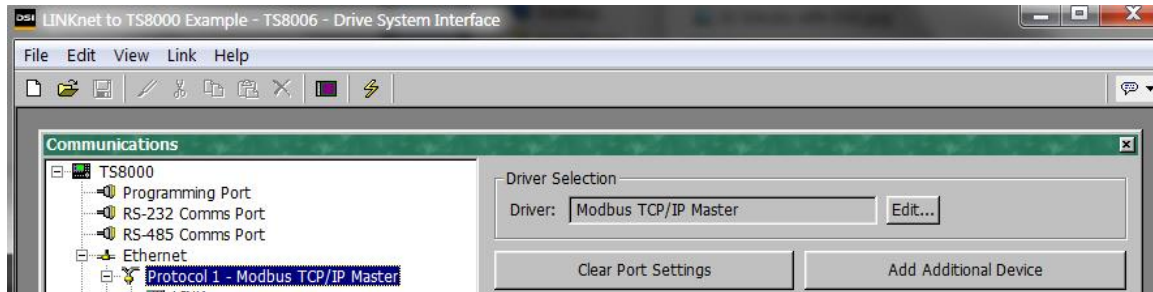
Also set up the *IP address* and the *Subnet Mask* in the *System Control* block as shown:



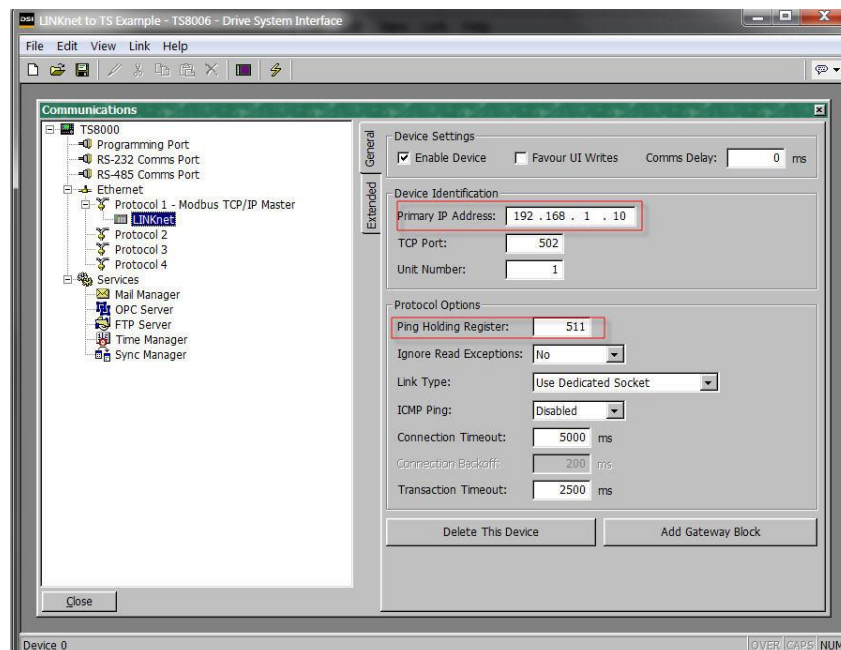
## Setting up the TS8000 Operator Station using DSI8000

(The 'DSI' & 'DSE' Example discussed in this manual is located in the directory C:\SSD\_LINK\HELP\WIN3. The files are called: LKN\_2\_TS.dsi & LKN\_2\_TS.LKN.)

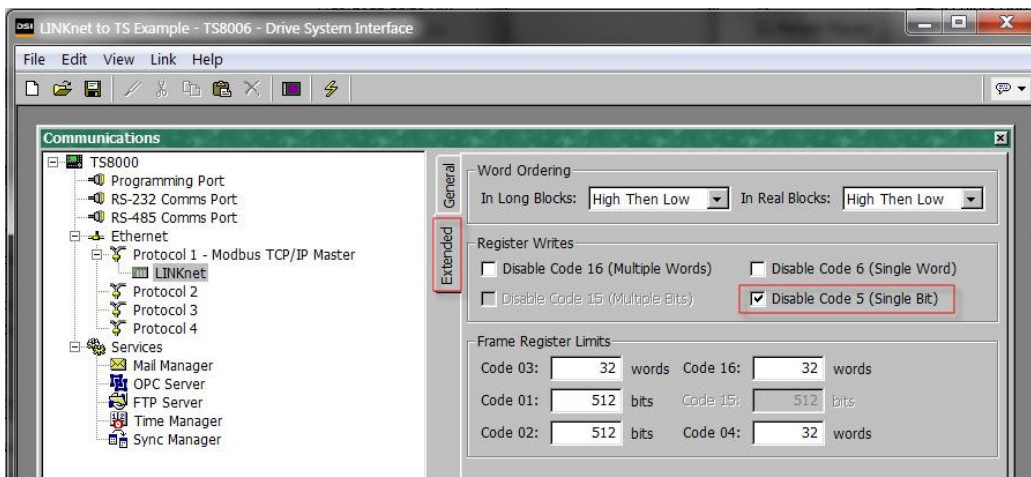
1. Select "Modbus TCP/IP Master" protocol for Ethernet Port. The TS8000 is the Master.



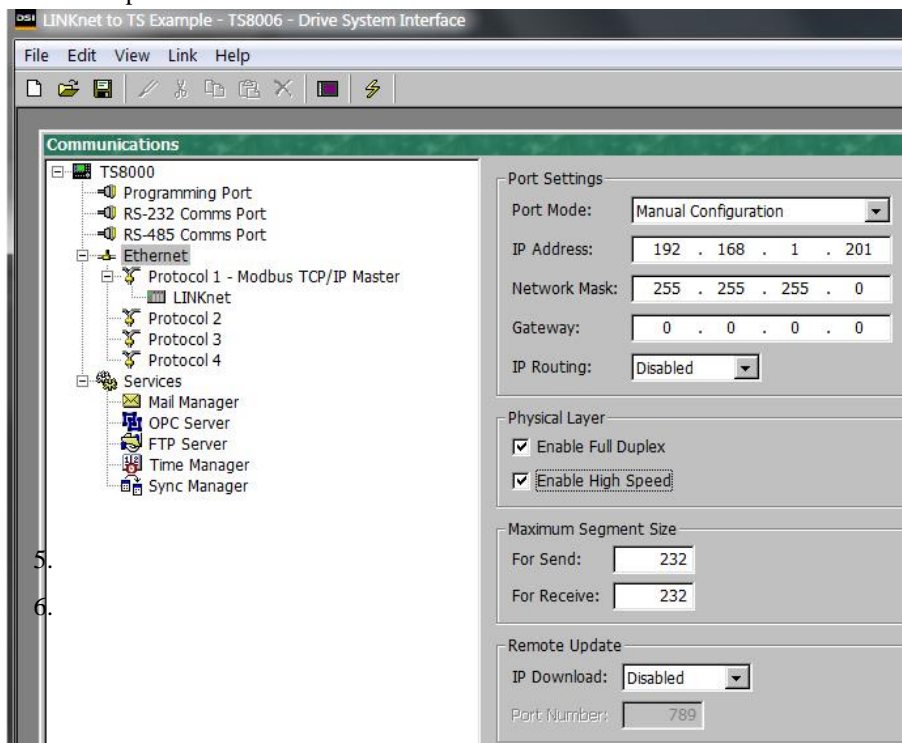
2. Set the Primary IP Address. The Ping Holding Register **MUST** be set to 511 or 0 which disables it.



3. In the *Extended* menu check the ‘Disable Code 5 (Single Bit)’, as shown.

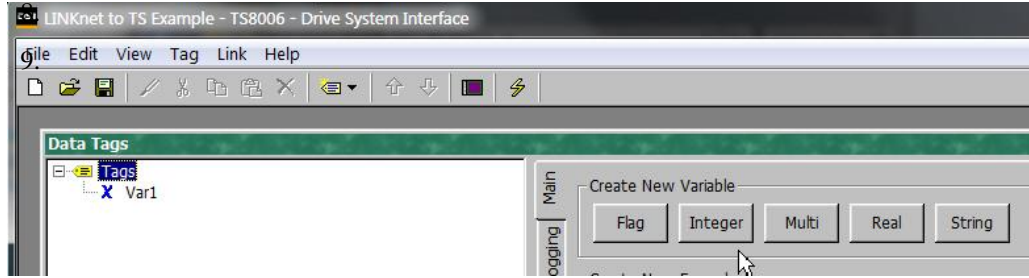


4. Set up the Ethernet as shown

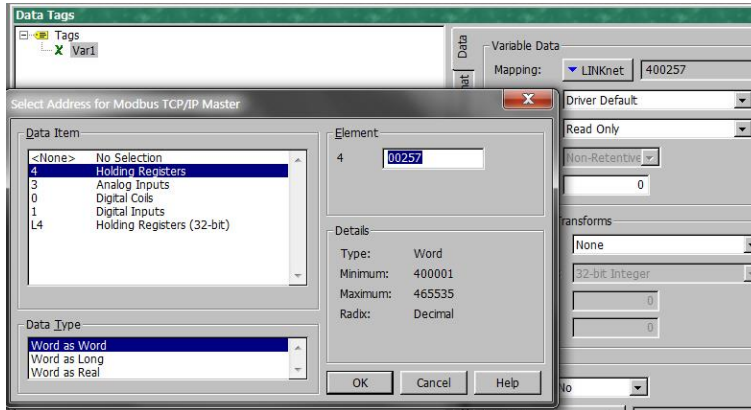


5.  
6.

7. Create the Data Tags for reading and writing variables. Please see the example for pre defined Data Tags.



8. Create the address tags. They are all pre defined in the example.



**Data Item:**

Always select **Holding Registers** for both 16-bit and 32-bit data types. **DO NOT SELECT “Holding Registers (32-bit)”**.

**Element:**

Set to **00001** to write to the first Input variable declared in DSE.

Set to **00257** to read the first Output variable declared in DSE.

The element number then increments by 1 if the Data Type of the previous variable is **Word as Word**, otherwise it increments by 2.

**Data Type:**

Set as follows:

DSE Type	TS8000 Data Type
SINT16	Word as Word
UINT16	
SINT32	Word as Long
UINT32	
REAL	Word as Real

The Modbus interface is essentially the same as the 890. It on works on the holding registers (4xxxxx). Registers 400001 to 400256 are Input only (to LINKnet Techbox) and registers 400257 to 400512 are Output only (from LINKnet Techbox). There are no read/write registers. Each register is 16 bits but two registers are used to read/write 32 bit data values via Modbus TCP/IP. Whether one or two registers are used to transmit the data depends on the Input/Output Type selected in the Modbus Slave function block. The Input/Output modbus function block selected determines the VM data format (Logic, Integer or Value) to be used to convert the VM data to the data being sent/received over modbus. Typically you would match the VM type to the Modbus type (Integer to SINT32 and Value to FLOAT), but there is no requirement to do this.

The following describes the conversion between VM inputs and how they are received via Modbus:

VM TYPE	MODBUS	# Reg	Description
Logic Input	SINT16	1	input = bit 0 of modbus register
Logic Input	UINT16	1	input = bit 0 of modbus register
Logic Input	SINT32	2	input = bit 0 of modbus register
Logic Input	UINT32	2	input = bit 0 of modbus register
Logic Input	FLOAT	2	input is 0 if input is 0.0, otherwise 1
Integer Input	SINT16	1	input = -32767 to 32767
Integer Input	UINT16	1	input = 0 to 65535
Integer Input	SINT32	2	input = -2147483647 to 2147483647
Integer Input	UINT32	2	input = 0 to 2147483647
Integer Input	FLOAT	2	input = -2147483647 to 2147483647
Value Input	SINT16	1	input = -32767.0 to 32767.0
Value Input	UINT16	1	input = -32767.0 to 32767.0 (same as SINT16)
Value Input	SINT32	2	input = -32767.0 to 32767.0
Value Input	UINT32	2	input = -32767.0 to 32767.0 (same as SINT32)
Value Input	FLOAT	2	IEEE format 32 converted to 16.16 value

The following describes the conversion between VM outputs and how they are sent via Modbus:

VM TYPE	MODBUS	# Reg	Description
Logic Output	SINT16	1	output is 0 if input is 0, otherwise 1
Logic Output	UINT16	1	output is 0 if input is 0, otherwise 1
Logic Output	SINT32	2	output is 0 if input is 0, otherwise 1
Logic Output	UINT32	2	output is 0 if input is 0, otherwise 1
Logic Output	FLOAT	2	0.0 or 1.0 sent as an IEEE format 32 floating point number
Integer Output	SINT16	1	output clamped in range -32767 to 32767
Integer Output	UINT16	1	output clamped in range 0 to 32767
Integer Output	SINT32	2	output from -2147483647 to 2147483647
Integer Output	UINT32	2	output treated an unsigned 32 bit number (0 to 4294967295)
Integer Output	FLOAT	2	output sent as an IEEE format 32 floating point number
Value Output	SINT16	1	output clamped in range -32767 to 32767
Value Output	UINT16	1	output clamped in range 0 to 32767
Value Output	SINT32	2	output from -2147483647 to 2147483647
Value Output	UINT32	2	output treated an unsigned 32 bit number (0 to 4294967295)
Value Output	FLOAT	2	output sent as an IEEE format 32 floating point number

## Chapter 10 – Compliance

---

- \* Recommended Ferrite Core for Ethernet cable to meet CE EMC radiated emission (Ferrite Core, Parker part number **DJ467799**).
- \* The Ferrite Core and CAT 6 shielded Cable are needed to meet Class A limits of standard EN 61800-3:2004

**6055-LNET-00 TECHBOX with FERRITE CORE Installed**







## Chapter 11 – Technical Specifications

---

### Environmental

Operating Temperature: 0°C to 45°C (32°F to 113°F)  
Humidity: Maximum 85% relative humidity at 40°C (114°F)  
Non-condensing environment

### Supply

Supply Voltage: Internal power supply taken from the drive  
But it can be supplied externally

### External Supply

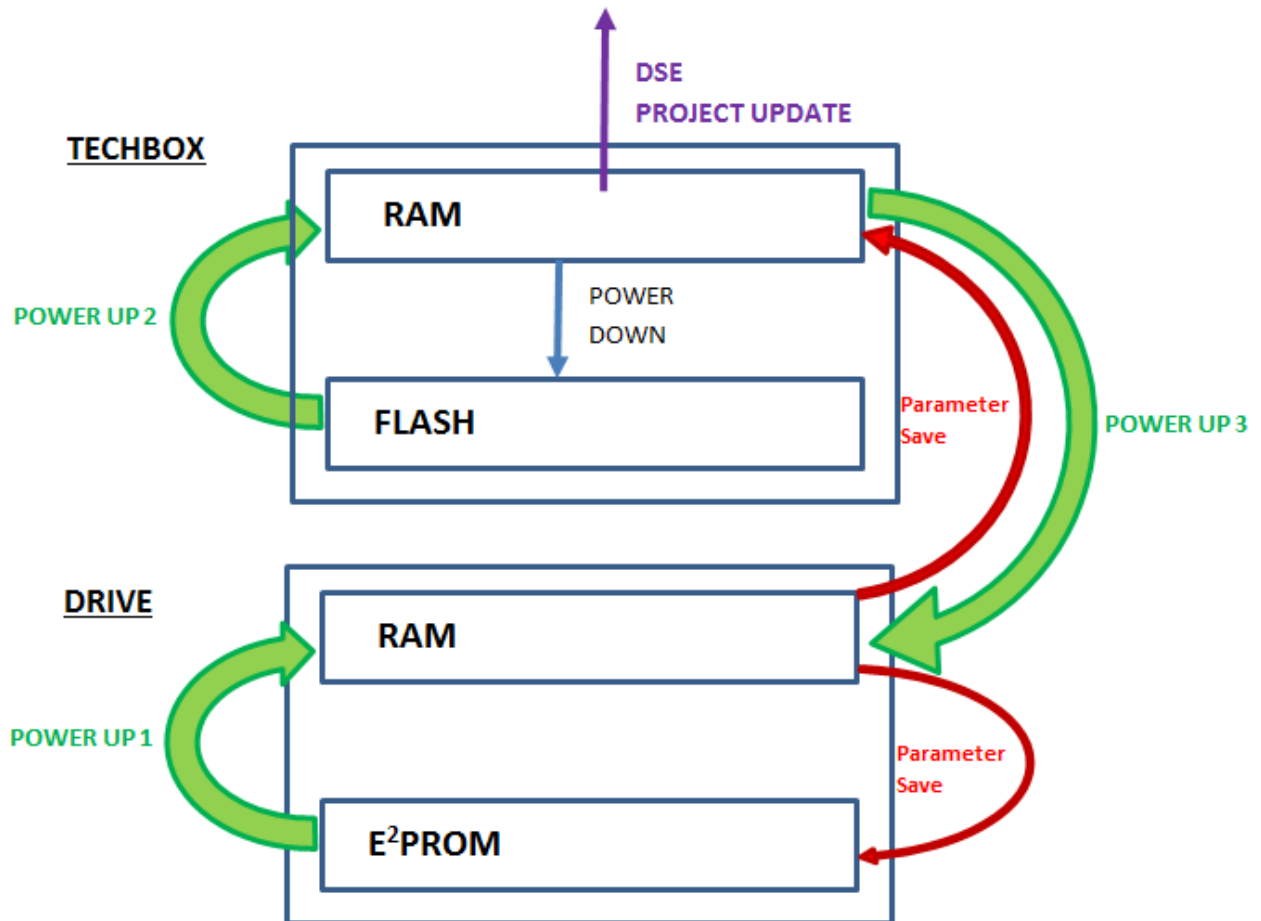
Voltage Range: 15 to 30 VDC nominal  
Current: 320 mA @ 15 VDC  
200 mA @ 24 VDC  
160 mA @ 30 VDC

### Physical

Height: 5 inches  
Width: 3 inches  
Depth: 1 inch  
Weight: 0.2 pounds



## Appendix A - Sequencing States



### On Power Up the sequence is as follows:

1. When the drive is powered up, data is transferred from the *Drives E Squared PROM* to the *Drives RAM*.
2. Then data is transferred from the *Techbox's Flash* to the *Techbox's RAM*.
3. The last step is: data is transferred from the *Techbox's RAM* to the *Drives RAM*.

### On a "Drive Parameter Save" the sequence is as follows:

1. Data is transferred from the *Drives RAM* to the *Drives E Squared PROM*.
2. Data is transferred from the *Drives RAM* to the *Techbox's RAM*.

### On a "DSE / Project / Update" the sequence is as follows:

1. When using DSE and a *Project / Update* is performed, data taken from the *Techbox's RAM* and the *LINK Configurations* are updated. This is why a *Parameter Save* MUST be done prior to doing a *Project / Update*. If a *Parameter Save* is not performed, the *LINK Configurations* will not be updated with the drives latest parameters.

### On a Power down:

1. Data is transferred from the *Techbox's RAM* to the *Techbox's FLASH*.

# Parker Worldwide

**AE – UAE, Dubai**

Tel: +971 4 8127100  
parker.me@parker.com

**AR – Argentina, Buenos Aires**

Tel: +54 3327 44 4129

**AT – Austria, Wiener Neustadt**

Tel: +43 (0)2622 23501-0  
parker.austria@parker.com

**AT – Eastern Europe, Wiener Neustadt**

Tel: +43 (0)2622 23501 900  
parker.easteurope@parker.com

**AU – Australia, Castle Hill**

Tel: +61 (0)2-9634 7777

**AZ – Azerbaijan, Baku**

Tel: +994 50 2233 458  
parker.azerbaijan@parker.com

**BE/LU – Belgium, Nivelles**

Tel: +32 (0)67 280 900  
parker.belgium@parker.com

**BR – Brazil, Cachoeirinha RS**

Tel: +55 51 3470 9144

**BY – Belarus, Minsk**

Tel: +375 17 209 9399  
parker.belarus@parker.com

**CA – Canada, Milton, Ontario**

Tel: +1 905 693 3000

**CH – Switzerland, Etoy**

Tel: +41 (0)21 821 87 00  
parker.switzerland@parker.com

**CL – Chile, Santiago**

Tel: +56 2 623 1216

**CN – China, Shanghai**

Tel: +86 21 2899 5000

**CZ – Czech Republic, Klecany**

Tel: +420 284 083 111  
parker.czechrepublic@parker.com

**DE – Germany, Kaarst**

Tel: +49 (0)2131 4016 0  
parker.germany@parker.com

**DK – Denmark, Ballerup**

Tel: +45 43 56 04 00  
parker.denmark@parker.com

**ES – Spain, Madrid**

Tel: +34 902 330 001  
parker.spain@parker.com

**FI – Finland, Vantaa**

Tel: +358 (0)20 753 2500  
parker.finland@parker.com

**FR – France, Contamine s/Arve**

Tel: +33 (0)4 50 25 80 25  
parker.france@parker.com

**GR – Greece, Athens**

Tel: +30 210 933 6450  
parker.greece@parker.com

**HK – Hong Kong**

Tel: +852 2428 8008

**HU – Hungary, Budapest**

Tel: +36 1 220 4155  
parker.hungary@parker.com

**IE – Ireland, Dublin**

Tel: +353 (0)1 466 6370  
parker.ireland@parker.com

**IN – India, Mumbai**

Tel: +91 22 6513 7081-85

**IT – Italy, Corsico (MI)**

Tel: +39 02 45 19 21  
parker.italy@parker.com

**JP – Japan, Tokyo**

Tel: +81 (0)3 6408 3901

**KR – South Korea, Seoul**

Tel: +82 2 559 0400

**KZ – Kazakhstan, Almaty**

Tel: +7 7272 505 800  
parker.easteurope@parker.com

**LV – Latvia, Riga**

Tel: +371 6 745 2601  
parker.latvia@parker.com

**MX – Mexico, Apodaca**

Tel: +52 81 8156 6000

**MY – Malaysia, Shah Alam**

Tel: +60 3 7849 0800

**NL – The Netherlands, Oldenzaal**

Tel: +31 (0)541 585 000  
parker.nl@parker.com

**NO – Norway, Ski**

Tel: +47 64 91 10 00  
parker.norway@parker.com

**NZ – New Zealand, Mt Wellington**

Tel: +64 9 574 1744

**PL – Poland, Warsaw**

Tel: +48 (0)22 573 24 00  
parker.poland@parker.com

**PT – Portugal, Leca da Palmeira**

Tel: +351 22 999 7360  
parker.portugal@parker.com

**RO – Romania, Bucharest**

Tel: +40 21 252 1382  
parker.romania@parker.com

**RU – Russia, Moscow**

Tel: +7 495 645-2156  
parker.russia@parker.com

**SE – Sweden, Spånga**

Tel: +46 (0)8 59 79 50 00  
parker.sweden@parker.com

**SG – Singapore**

Tel: +65 6887 6300

**SK – Slovakia, Banská Bystrica**

Tel: +421 484 162 252  
parker.slovakia@parker.com

**SL – Slovenia, Novo Mesto**

Tel: +386 7 337 6650  
parker.slovenia@parker.com

**TH – Thailand, Bangkok**

Tel: +662 717 8140

**TR – Turkey, Istanbul**

Tel: +90 216 4997081  
parker.turkey@parker.com

**TW – Taiwan, Taipei**

Tel: +886 2 2298 8987

**UA – Ukraine, Kiev**

Tel: +380 44 494 2731  
parker.ukraine@parker.com

**UK – United Kingdom, Warwick**

Tel: +44 (0)1926 317 878  
parker.uk@parker.com

**US – USA, Cleveland**

Tel: +1 216 896 3000

**VE – Venezuela, Caracas**

Tel: +58 212 238 5422

**ZA – South Africa, Kempton Park**

Tel: +27 (0)11 961 0700  
parker.southafrica@parker.com

