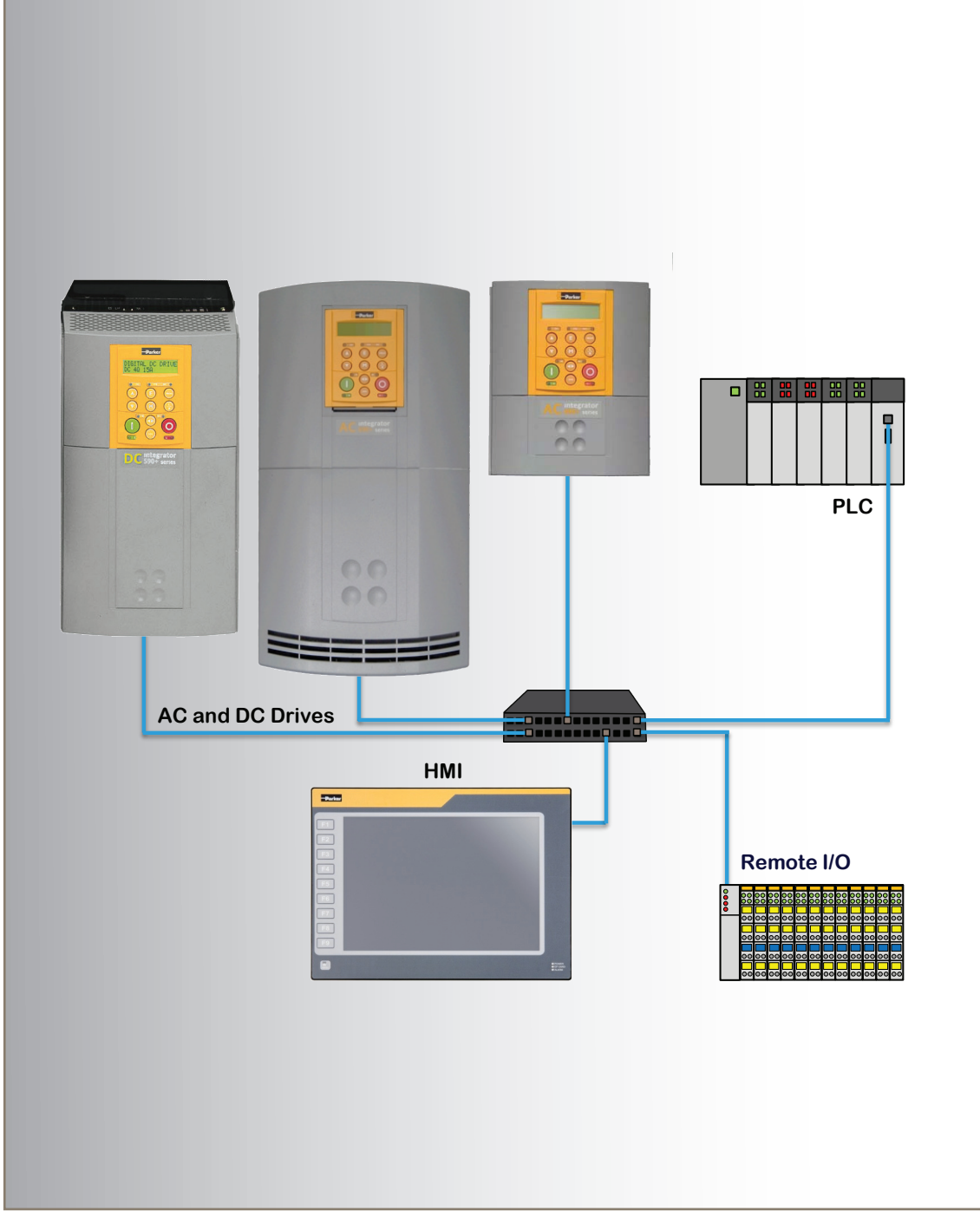
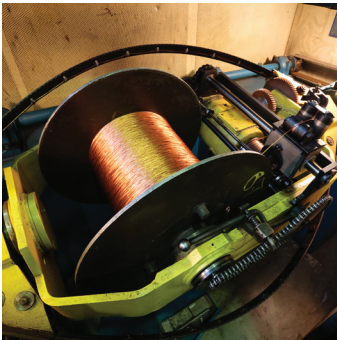


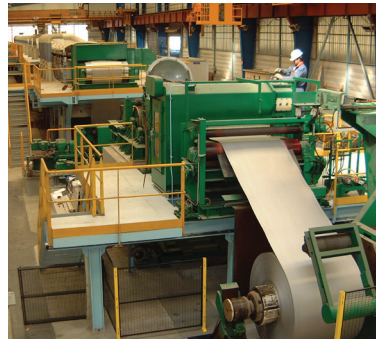


aerospace
 climate control
 electromechanical
 filtration
 fluid & gas handling
 hydraulics
 pneumatics
 process control
 sealing & shielding



LINKnet

For Drive System Networking



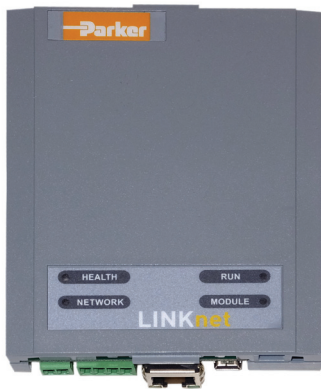
ENGINEERING YOUR SUCCESS.

LINKnet

Overview

Description

Parker LINKnet is an Ethernet based version of the SSD LINK system that has been successfully used in coordinated drive systems for 25 years. It is a peer-to-peer network designed to integrate AC and DC drives with remote I/O at high speed, with or without a supervisory PLC. The network allows precise and repeatable control for complex machines and process lines. LINKnet nodes communicate using Modbus TCP over Ethernet.



LINKnet Hardware

Three varieties of LINKnet tech boxes are available, including direct plug-in modules for all frame sizes of AC690+ and DC590+, and a stand-alone DIN rail variant for interfacing with other devices. LINKnet tech boxes are connected by commercially available CAT-6 Ethernet cable, and require no external source of power when installed on an AC690+ or DC590+ drive.



Flexible I/O

Parker has qualified third party remote fieldbus I/O modules for use in LINKnet systems. This provides users with an assortment of standard modules to choose from. Digital, analog, and specialty modules may be combined, up to 64 per node, and will be recognized and supported by Parker DSE software.

Easy to Retrofit

LINKnet components are plug-in compatible with many older drives. This means that an existing LINK system using AC690+ and/or DC590+ units can potentially be updated to LINKnet without requiring the replacement of functional drives. The system will connect to any Ethernet enabled PLC and with remote I/O. LINK2 touchscreens can be replaced by the Parker TS8000.



HMI Capable

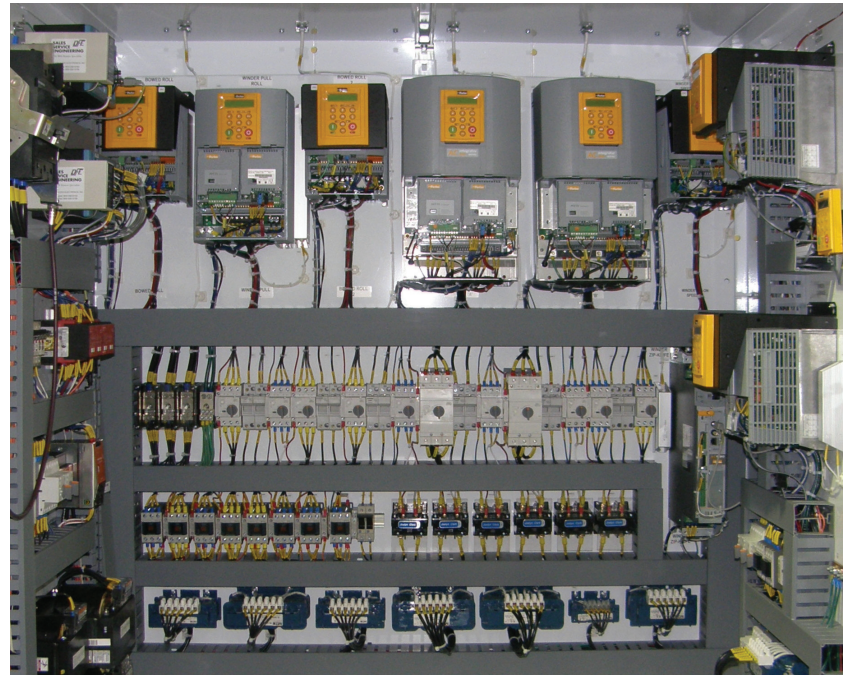
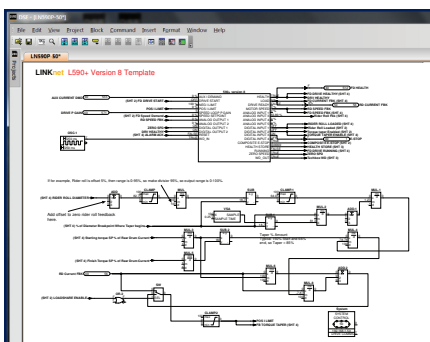
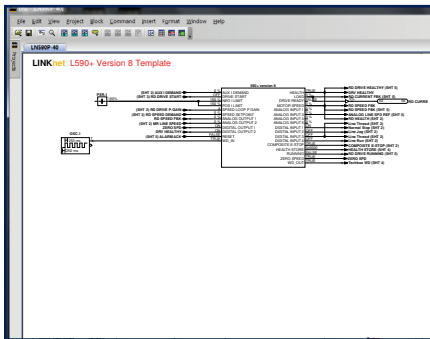
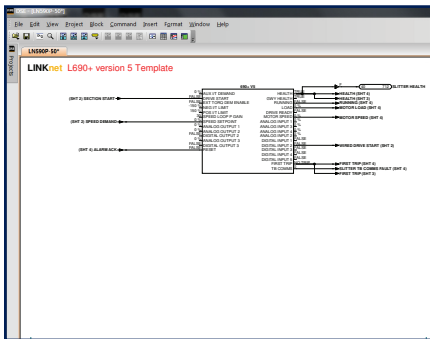
The Parker TS8000 series HMI, available in several convenient sizes, can easily be connected directly to the LINKnet system. Functions previously performed by a LINK2 display can be mapped to the TS8000. Additionally, third party HMI devices can be connected as long as they are Ethernet compatible.

- **Modernize your line without replacing drives**
- **Real time peer-to-peer communications**
- **High noise immunity**
- **No repeaters required**
- **Uses commercially available CAT-6 cable**

LINKnet

Parker DSE Software

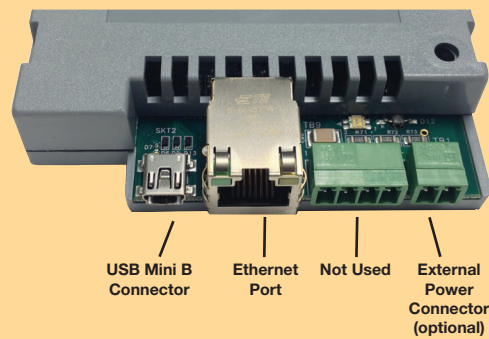
The LINKnet system runs in Parker's proven DSE software environment. DSE is a Windows based software tool using a drag and drop interface. It enables the user to expertly design systems, using the many pre-engineered macro and function control blocks in LINK's extensive software library. LINKnet nodes are mapped like any other device, and support for standard remote fieldbus I/O modules is built in.



Typical LINKnet System Architecture

CAT-6 Ethernet cable is used for all connections. All nodes are wired to a standard Ethernet switch. For PLCs that are not Ethernet capable, a commercially available protocol converter may be installed. Up to 100 nodes may be connected to the network.

LINKnet Tech Box Connections



Specifications/Technical Characteristics

Power Supply	Supplied by AC690+ or DC590+ drive. If stand-alone, requires 24VDC at 200mA
Compatibility	AC690+, DC590+ series with version 5 firmware and later.
Cable required	CAT6 Ethernet cable (not included)
Maximum cable length	100 meters
Maximum number of nodes	255
Communication speed	100 Mbit/sec (100BASE-TX)
Software	Parker DSE v3.00 and later

Parker Worldwide

AE – UAE, Dubai

Tel: +971 4 8127100
parker.me@parker.com

AR – Argentina, Buenos Aires

Tel: +54 3327 44 4129

AT – Austria, Wiener Neustadt

Tel: +43 (0)2622 23501-0
parker.austria@parker.com

AT – Eastern Europe, Wiener Neustadt

Tel: +43 (0)2622 23501 900
parker.easteurope@parker.com

AU – Australia, Castle Hill

Tel: +61 (0)2-9634 7777

AZ – Azerbaijan, Baku

Tel: +994 50 2233 458
parker.azerbaijan@parker.com

BE/LU – Belgium, Nivelles

Tel: +32 (0)67 280 900
parker.belgium@parker.com

BR – Brazil, Cachoeirinha RS

Tel: +55 51 3470 9144

BY – Belarus, Minsk

Tel: +375 17 209 9399
parker.belarus@parker.com

CA – Canada, Milton, Ontario

Tel: +1 905 693 3000

CH – Switzerland, Etoy

Tel: +41 (0)21 821 87 00
parker.switzerland@parker.com

CL – Chile, Santiago

Tel: +56 2 623 1216

CN – China, Shanghai

Tel: +86 21 2899 5000

CZ – Czech Republic, Klecany

Tel: +420 284 083 111
parker.czechrepublic@parker.com

DE – Germany, Kaarst

Tel: +49 (0)2131 4016 0
parker.germany@parker.com

DK – Denmark, Ballerup

Tel: +45 43 56 04 00
parker.denmark@parker.com

ES – Spain, Madrid

Tel: +34 902 330 001
parker.spain@parker.com

FI – Finland, Vantaa

Tel: +358 (0)20 753 2500
parker.finland@parker.com

FR – France, Contamine s/Arve

Tel: +33 (0)4 50 25 80 25
parker.france@parker.com

GR – Greece, Athens

Tel: +30 210 933 6450
parker.greece@parker.com

HK – Hong Kong

Tel: +852 2428 8008

HU – Hungary, Budapest

Tel: +36 1 220 4155
parker.hungary@parker.com

IE – Ireland, Dublin

Tel: +353 (0)1 466 6370
parker.ireland@parker.com

IN – India, Mumbai

Tel: +91 22 6513 7081-85

IT – Italy, Corsico (MI)

Tel: +39 02 45 19 21
parker.italy@parker.com

JP – Japan, Tokyo

Tel: +81 (0)3 6408 3901

KR – South Korea, Seoul

Tel: +82 2 559 0400

KZ – Kazakhstan, Almaty

Tel: +7 7272 505 800
parker.easteurope@parker.com

LV – Latvia, Riga

Tel: +371 6 745 2601
parker.latvia@parker.com

MX – Mexico, Apodaca

Tel: +52 81 8156 6000

MY – Malaysia, Shah Alam

Tel: +60 3 7849 0800

NL – The Netherlands, Oldenzaal

Tel: +31 (0)541 585 000
parker.nl@parker.com

NO – Norway, Ski

Tel: +47 64 91 10 00
parker.norway@parker.com

NZ – New Zealand, Mt Wellington

Tel: +64 9 574 1744

PL – Poland, Warsaw

Tel: +48 (0)22 573 24 00
parker.poland@parker.com

PT – Portugal, Leca da Palmeira

Tel: +351 22 999 7360
parker.portugal@parker.com

RO – Romania, Bucharest

Tel: +40 21 252 1382
parker.romania@parker.com

RU – Russia, Moscow

Tel: +7 495 645-2156
parker.russia@parker.com

SE – Sweden, Spånga

Tel: +46 (0)8 59 79 50 00
parker.sweden@parker.com

SG – Singapore

Tel: +65 6887 6300

SK – Slovakia, Banská Bystrica

Tel: +421 484 162 252
parker.slovakia@parker.com

SL – Slovenia, Novo Mesto

Tel: +386 7 337 6650
parker.slovenia@parker.com

TH – Thailand, Bangkok

Tel: +662 717 8140

TR – Turkey, Istanbul

Tel: +90 216 4997081
parker.turkey@parker.com

TW – Taiwan, Taipei

Tel: +886 2 2298 8987

UA – Ukraine, Kiev

Tel: +380 44 494 2731
parker.ukraine@parker.com

UK – United Kingdom, Warwick

Tel: +44 (0)1926 317 878
parker.uk@parker.com

US – USA, Cleveland

Tel: +1 216 896 3000

VE – Venezuela, Caracas

Tel: +58 212 238 5422

ZA – South Africa, Kempton Park

Tel: +27 (0)11 961 0700
parker.southafrica@parker.com

