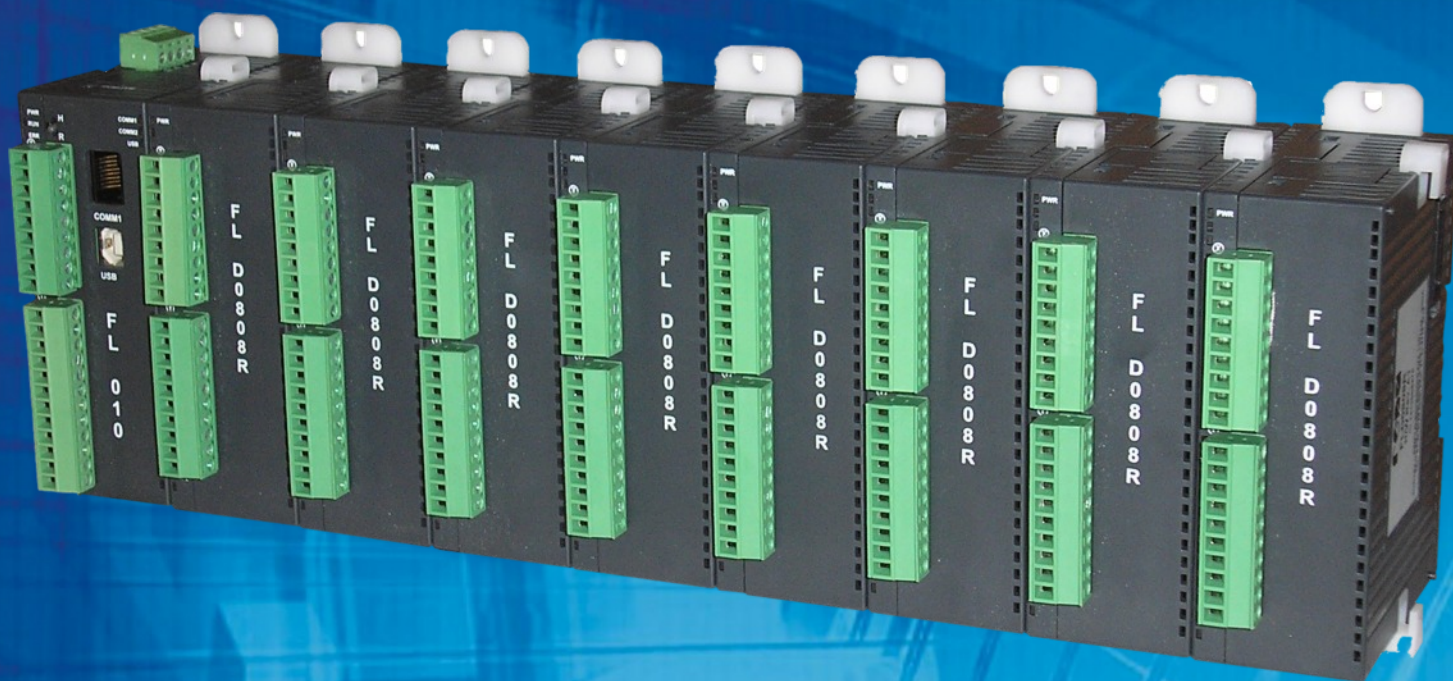
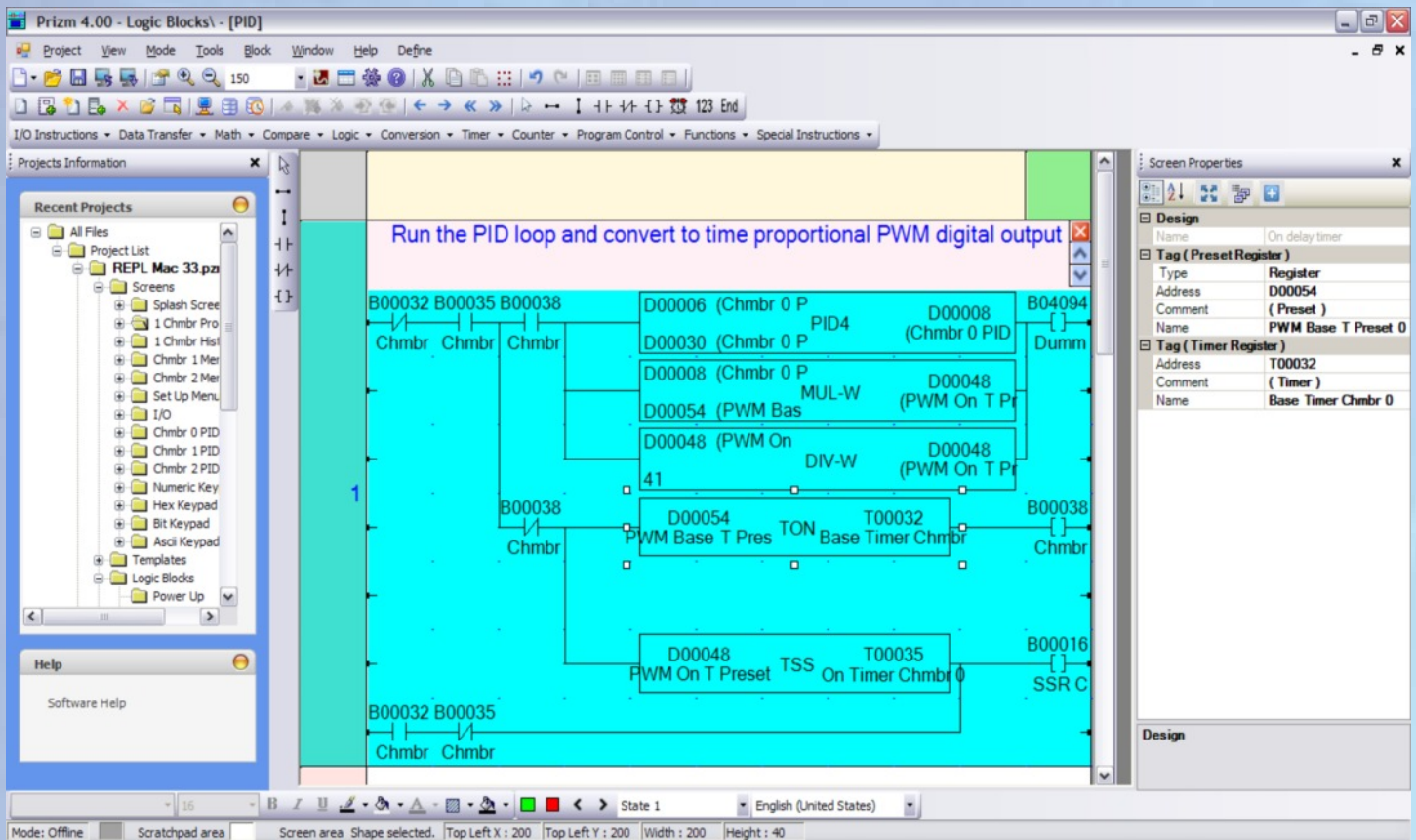


FlexiLogics Micro PLC



Key Features

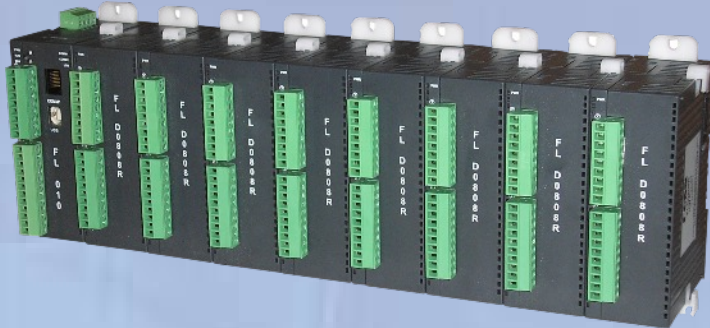
- **Analog and Digital Expansion Modules**
- **Add up to 8 Expansion Modules**
- **Recipe Support**
- **Real Time Clock**
- **100 KHz High Speed Counters**
- **High Speed PWM outputs (5 KHz)**
- **USB Slave Port for Programming & Monitoring**
- **Two Serial Ports for Networking or Communicating to other devices**
- **Communications Drivers for PLCs, VFDs, Servos, Weigh Scales and more**
- **Ethernet Port Version Available**
- **Powerful Ladder Based programming**
- **Includes advanced functions like PID, For/Next Loops, Subroutines, Floating Point Math and Moving Average**
- **UL/CE**
- **One programming software package ... FREE!**



Specifications

Control Method	Stored program cyclic scan system
I/O Processing	Batch I/O update (refresh) and Direct I/O access
I/O Points	FL10 main unit - 8 digital inputs, 8 digital outputs FL50 main unit - none
Programming Language	Ladder diagram
Program Capacity	8 k Steps
Memory	Program: Flash Data: SRAM and EEPROM
Execution Speed	1 msec/1,000 steps of boolean instructions
Timers	256
Counters	256
Data Registers	4096
Flash Data Registers	1400
Internal Bits	4096
Real Time Clock	Year, month, day, hour, minute, second, day of week
Special I/O Function	High speed counter (2 single or 1 quadrature) 2 pulse or PWM outputs
Communications Interface	USB device port for programming & monitoring (1) 2 wire RS485 on terminal blocks (1) multi-use RS232, RS485 4 wire, on RJ45 (1) 10/100 mb Ethernet port (FL50 only)
Expansion Modules	Up to 8
Power	24 VDC +/- 15%
Operating Temperature	0 to 55 C, -20 to 85 C (storage)
Humidity	10% to 85%, non-condensing
Approvals	UL class 1 div 2, CE
Normal Inputs	24 VDC NPN/PNP
Input Points	8 with one common
High Speed Inputs	Two 24 VDC PNP, 50 kHz per channel
Digital Outputs	Relay ratings - 2 Amps at 230 VAC PNP or NPN, 500 mA per channel PWM/Pulse Out (5 KHz)
Dimensions (cpu and expansion)	100 mm H x 36 mm W x 70 mm D

Modules



Base Units

- FL010 FlexiLogic PLC CPU module, 24 vdc pwr, 8 digital inputs, 6 relay outputs, 2 transistor outputs, RS232/485 port, RS485 2 wire port, USB device port for programming & monitoring port
- FL050 FlexiLogic PLC CPU module, 24 vdc pwr, 10/100 Mbps Ethernet port, RS232/485 port, RS485 2 wire port, USB device port for programming & monitoring
- FL100 FlexiLogic PLC CPU module, 24 vdc pwr, 10/100 Mbps Ethernet port, RS232/485 port, RS485 2 wire port, USB device port for programming & monitoring, USB host port for program upload and data log download, web server, 20 mb data log capability, 16 expansion modules

Digital Expansion Modules

- FLD1600 16 DC digital inputs (PNP or NPN)
- FLD0016P 16 PNP 500 mA digital outputs
- FLD0016C 16 NPN 500 mA digital outputs
- FLD0016R 16 Relay 2 Amp digital outputs
- FLD0808P 8 DC digital inputs, 8 PNP 500 mA digital outputs
- FLD0808C 8 DC digital inputs, 8 NPN 500 mA digital outputs
- FLD0808R 8 DC digital inputs, 8 Relay 2A digital outputs

Analog Expansion Modules

- FLA0800L 8 analog inputs, 4-20 mA or 0-10 VDC, 16 bit resolution
- FLA0800R 8 analog inputs, RTD, PT100, 16 bit resolution
- FLA0004 4 analog outputs, 4-20 mA or 0-10 VDC, 16 bit resolution
- FLA0402U 4 Universal Input Channels, Select Input type by channel, 0 - 10 V, 0-20mA, 4-20mA, RTD PT100 (alpha1, alpha2), Thermocouple(TYPE B,R,S,E,J,K,N,T), 0-100mV or 0-50 mV. Outputs may be either 4-20 mA or 0-10 VDC. 16 bit resolution



PHOENIX
SOLUTIONS

www.comoso.com

Phoenix Sales, Inc.

336 McKee St.
Batavia, IL 60510

P: 630 879 8412
F: 516 706 2513

Info@phoenixsalesinc.com
www.phoenixsalesinc.com