

Gateway - 901 Cellular PLC

- Industrial GSM/GPRS cell phone modem
- Communicates with PLCs, VFDs, Servos, and many other devices using Renu's large set of HMI drivers
- Full featured PLC to manage and convert information
- Send SMS (text) messages to cellular devices depending on monitored conditions
- Communicate to over 500 cell numbers
- 12 kb of space for cell messages
- Embed up to 30 variables in the text message
- DIN rail or panel mounting

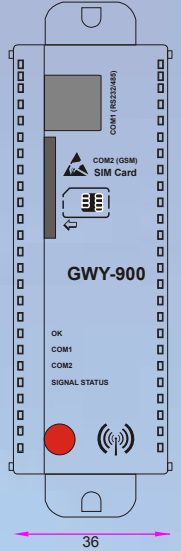


- Receive text messages and use the PLC functions to verify the sender and decode the message
- Supports multi-drop of serial devices
- RS232 and RS485 (2 or 4 wire) communications up to 187 kbaud
- USB Device Port for Programming and Monitoring
- Supports GSM quad band frequencies 850/900/1800/1900 MHz
- CE and UL Class 1 Div 2
- Common programming software FlexiSoft...FREE!

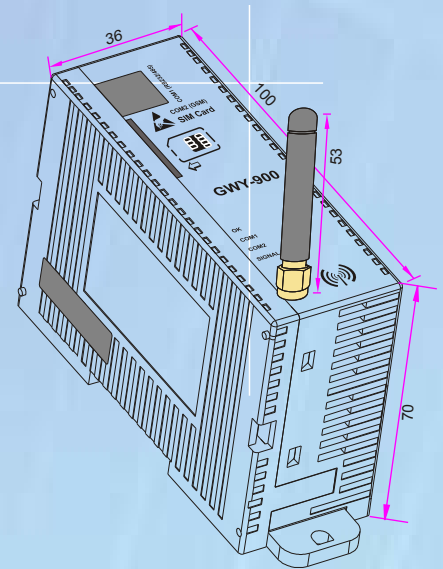
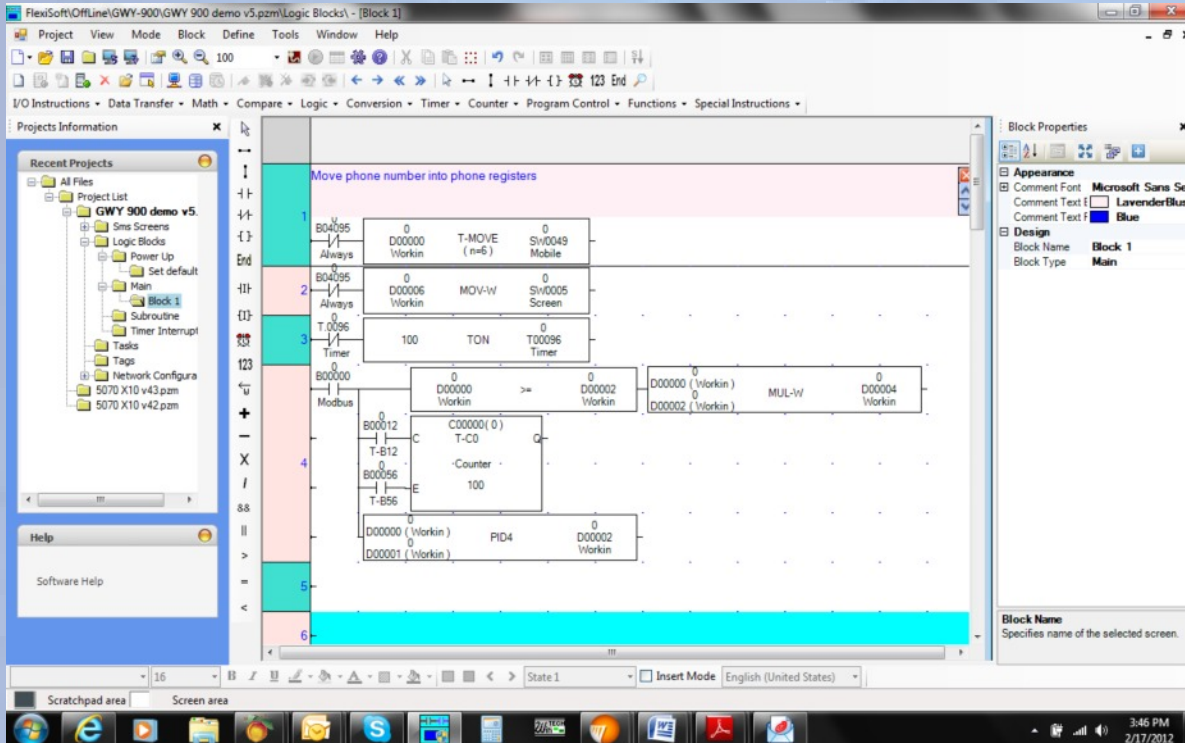


Specifications

Power	:	+ 24 V DC 10%, 10 W max when sending or receiving a text message. 4 W in standby mode
LED's	:	4 LED's for status indication
Communication Ports	:	
COM1 (RJ 45)	:	RS232 / RS422 / RS485 Connects to PC for setup download or connects to PLC1 at runtime.
COM2	:	GSM Port (Internally connected to GSM Module)
USB Host	:	USB Port for programming and monitoring
Operating Temperature	:	0° to + 60° C
Storage Temperature	:	-20° to + 80° C
Humidity	:	10% to 90% (Non condensing)
Mounting	:	DIN rail or back panel mounting
Dimensions (mm)	:	100 mm(H) X 36 mm(W) X 70 mm(D)
Weight	:	150 gm approximately
Certifications	:	CE, UL Class 1 Div 2, RoHS compliant



All dimensions are in mm.



PHOENIX SOLUTIONS

Phoenix Sales, Inc.

336 McKee St.
Batavia, IL 60510

P: 630 879 8412
F: 516 706 2513

Info@phoenixsalesinc.com
www.phoenixsalesinc.com

www.comoso.com