

ALWAYS OFFERING
QUICK DELIVERY
OF QUALITY
BUILT PRODUCTS

Pneumatic
Cylinders & Couplers
inc.

Aluminum and Stainless Steel
Cylinders and Accessories

R SERIES

Stainless Steel Repairable Pneumatic Cylinders

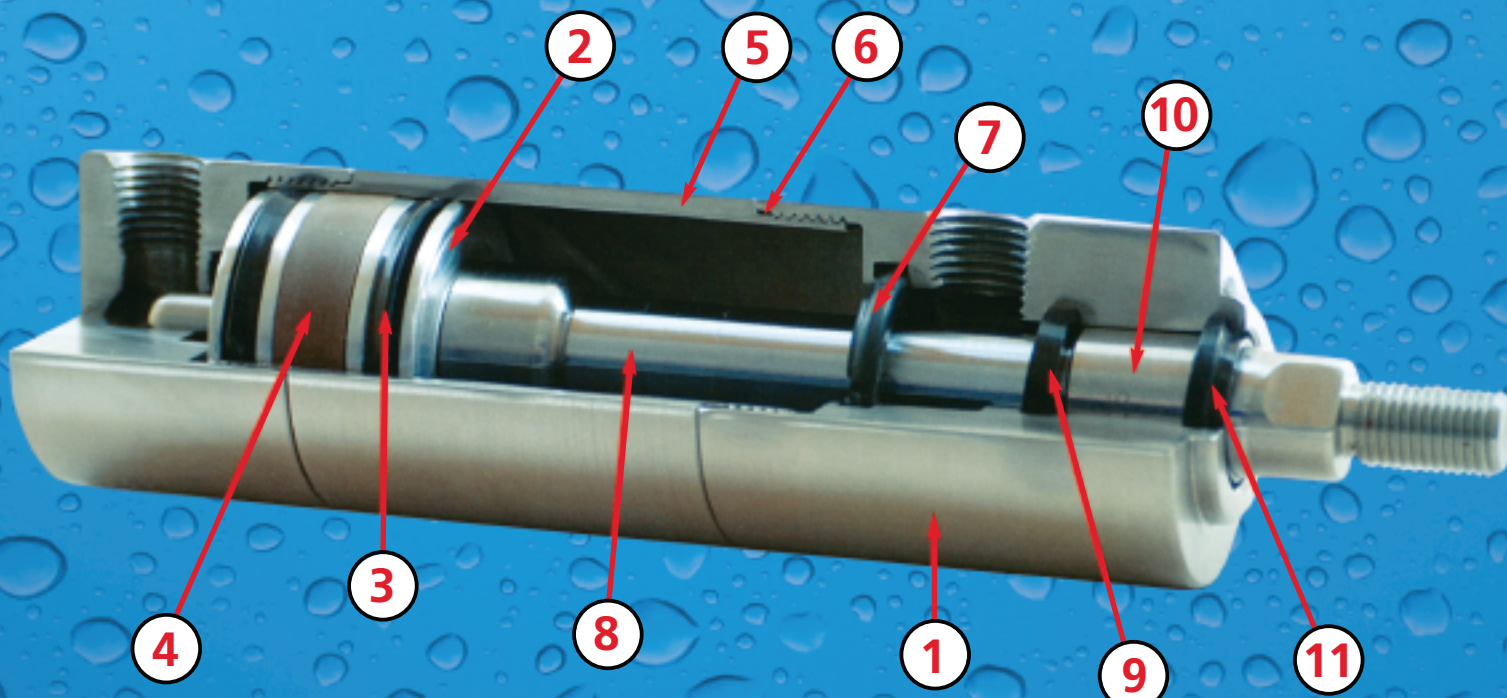
- 1-1/8" Thru 4" Bores
- 170 P.S.I. Pneumatic
- 18" Stroke Maximum
- Compact Round Design
- Non-Lube Service



*Washdown cylinders for the food, chemical
and pharmaceutical industries.*

Made in the U.S.A.

YOUR TOTAL PNEUMATA



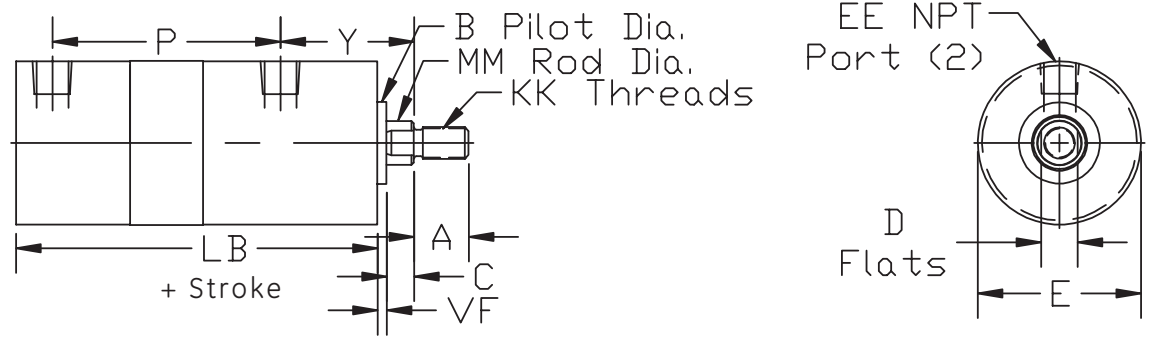
- 1** End caps are precision machined from 303 series stainless steel.
- 2** Pistons are machined from aluminum alloy for reduced weight. Magnets are available for use with proximity switches. A stainless steel piston is optional.
- 3** Piston seals are lip type nitrile and are pressure activated and wear compensating for long life.
- 4** Wear strip of Teflon and graphite compound for improved wear and side load resistance is standard.
- 5** Tubing is 300 series stainless steel with a precision honed I.D. and polished O.D.
- 6** Nitrile o-ring tube seal.
- 7** Floating cushion seals optional.
- 8** Piston rod material is 303 stainless steel. The O.D. is ground and polished and has a .0005" minimum thickness hard chrome plated surface.
- 9** Rod seal is urethane incorporating a rounded dynamic sealing lip for reduced friction and longer seal life.
- 10** Rod bushing is a self lubricating PTFE-based stainless steel bearing.
- 11** Rod wiper is AN type urethane which aggressively removes foreign material from the piston rod and extends rod seal life.

Bore	A	B	BB	C	CB	CC	CD	CW	D	DD	E	EE	EF	F	FB	FF	KK
1-1/8	0.75	0.75	0.25	0.25	0.50	5/16"-24	0.25	N/A	0.31	#10-32	1.38	1/8"	1.50	0.25	0.22	3/8"-24	1/4"-28
1-1/2	0.75	1.13	0.38	0.38	0.75	1/2"-20	0.50	0.38	0.50	1/4"-28	1.75	1/4"	2.00	0.38	0.31	5/8"-18	7/16"-20
2	0.75	1.13	0.50	0.38	0.75	1/2"-20	0.50	0.50	0.50	5/16"-24	2.25	1/4"	2.50	0.38	0.38	5/8"-18	7/16"-20
2-1/2	0.75	1.13	0.50	0.38	0.75	1/2"-20	0.50	0.50	0.50	5/16"-24	2.75	1/4"	3.00	0.38	0.38	5/8"-18	7/16"-20
3-1/4	1.13	1.50	0.63	0.50	1.25	7/8"-14	0.75	0.63	0.81	3/8"-24	3.75	3/8"	3.75	0.63	0.44	1"-14	3/4"-16
4	1.13	1.50	0.63	0.50	1.25	7/8"-14	0.75	0.63	0.81	3/8"-24	4.50	3/8"	4.50	0.63	0.44	1"-14	3/4"-16

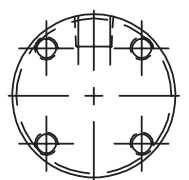
Bore	L	LB	M	MM	P	R	RE	TF	UF	VF	W	XC	XX	Y	ZB	ZF
1-1/8	0.44	3.25	0.31	0.38	1.86	1.00	0.71	2.00	2.50	0.13	0.13	4.07	1/4"-28	1.32	3.63	3.88
1-1/2	0.75	4.13	0.63	0.63	2.40	1.43	1.03	2.75	3.38	0.13	0.13	5.38	7/16"-20	1.73	4.63	5.00
2	0.75	4.13	0.63	0.63	2.40	1.84	1.31	3.38	4.13	0.13	0.13	5.38	7/16"-20	1.73	4.63	5.00
2-1/2	0.75	4.25	0.63	0.63	2.52	2.19	1.52	3.88	4.63	0.13	0.13	5.50	7/16"-20	1.73	4.75	5.13
3-1/4	1.25	5.00	0.88	1.00	2.69	2.76	1.86	4.69	5.50	0.13	0.00	6.88	3/4"-16	2.41	5.63	6.25
4	1.25	5.00	0.88	1.00	2.69	3.32	2.30	5.44	6.25	0.13	0.00	6.88	3/4"-16	2.41	5.63	6.25

PNEUMATIC CYLINDER CHOICE

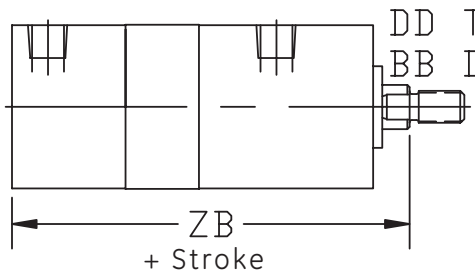
MXO BASIC



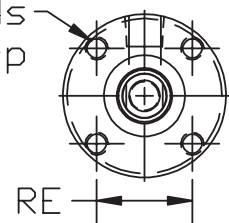
MRC TAPPED CAP



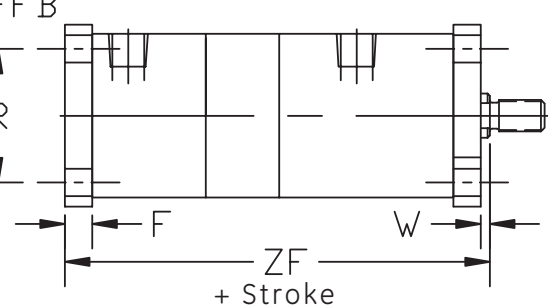
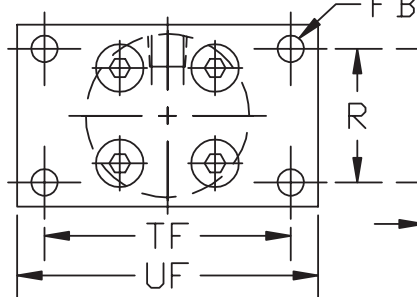
MRB TAPPED BOTH



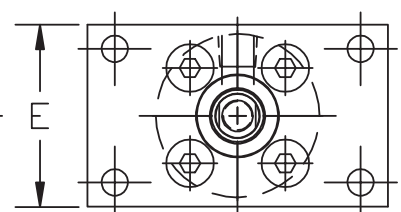
MRH TAPPED HEAD



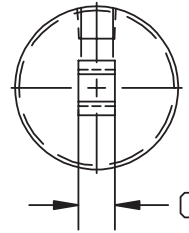
MF2 REAR FLANGE



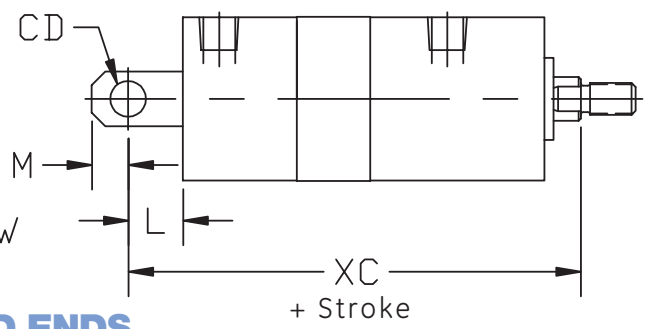
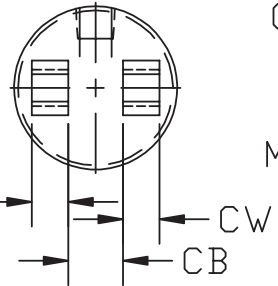
MF1 FRONT FLANGE



MP3 EYE*

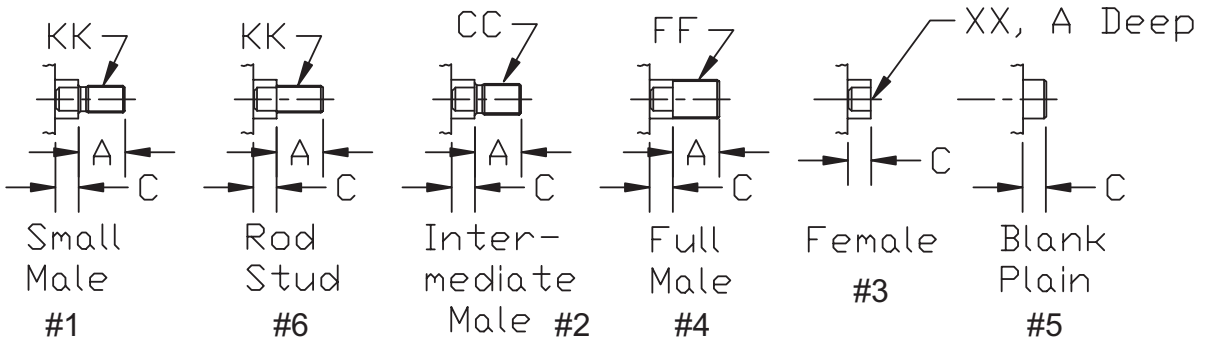


MP1 CLEVIS*



* Pin Included with MP3 & MP1

ROD ENDS



How To Order

Cylinder Ordering Table Numbers

R 2 0 D 0 5 . 0 0 2 F 1 F F B 1 MP

Example: Series R - 2" Bore - 5/8" Rod - 5" Stroke - Intermediate Male Rod Thread
Front Flange MF1 - Fixed Cushion Head and Fixed Cushion Cap - 1/4" NPT ports - Ports Pos# 1
Magnetic Piston

Reference Table Number: **1 2 3 4 5 6 7 8 9 10 11 12 13 14 15 16 Options**

TABLE 1 Series	
R	Round Body

TABLE 2 & 3 Bore			
	Bore		Bore
11	1-1/8"	25	2-1/2"
15	1-1/2"	32	3-1/4"
20	2"	40	4"

TABLE 4 Rod Diameter	
B	3/8"
D	5/8"
E	1"

TABLE 5, 6, 7, 8 & 9 Stroke	
Stroke shown in two place decimal ie: 02.00 = 2" Stroke	

TABLE 10 Rod End	
1	Small Male
2	Intermediate Male
3	Female
4	Full Male
5	Blank/Plain
6	Rod Stud

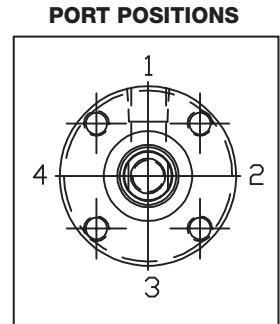


TABLE 11 & 12 Mount			
F1	MF1 Head Rectangular Flange	RC	Tapped Cup
F2	MF2 Cap Rectangular Flange	RH	Tapped Head
P1	MP1 Cap Fixed Clevis	RB	Tapped Both
P3	MP3 Cap Fixed Eye	X0	MX0 Basic Cylinder

TABLE 13 Head Cushion	
A	No Cushion
F	Fixed Cushion

TABLE 14 Cap Cushion	
A	No Cushion
F	Fixed Cushion

TABLE 15 Port Size	
A	1/8" NPT
B	1/4" NPT
C	3/8" NPT

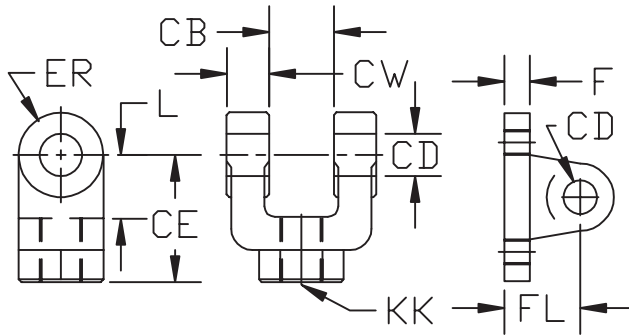
TABLE 16 Port Location	
1	Side 1
2	Side 2
3	Side 3
4	Side 4

OPTIONS			
A0	Air/Oil Piston Seal	MS	Magnetic Rod Scraper
BS	Bumper Piston Seals	PP	Poly-Pak Piston and Rod Seals
DR	Double Rod	UC	Urethane Bumper Cap End
LF	Low Friction Seals	UH	Urethane Bumper Head End
MP	Magnetic Piston	VS	High Temperature Seals

ACCESSORIES

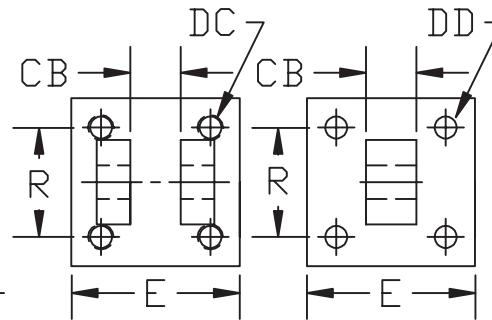
ROD CLEVIS

(CARC___S)



CLEVIS

(CACB___S)

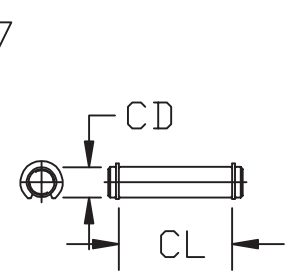


EYE

(CAEB___S)

PIVOT PIN

(CAPP___CAS)



Part#	Suffix	Pivot Dia.	CB	CD	CE	CL	CW	DC	DD	E	ER	F	FL	KK	L	R
0250		1/4"	0.50	0.25	0.88	0.94	0.19	1/4"-28	0.20	1.50	0.38	0.25	0.88	1/4"-28	0.50	1.13
0500		1/2"	0.75	0.50	1.50	1.88	0.50	3/8"-24	0.41	2.50	0.50	0.38	1.13	7/16"-20	0.75	1.63
0750		3/4"	1.25	0.75	2.38	2.75	0.63	1/2"-20	0.53	3.50	0.75	0.63	1.88	3/4"-16	1.25	2.56

SWITCH INFORMATION

PART #	Sensor Type	Switching Logic	Output	Operating Voltage	Switching Current	Power Rating	Voltage Drop	Shock/Vibration	Protection Circuit
CUCSR1-3-XX	Reed Switch	Normally Open	--	5-240V DC/AC 50/60Hz	1 Amp Max.	30 Watts	3.5V Max.	30G/9G	MOV
CUCSR4-3-XX	Reed Switch	Normally Open	TRIAC	24-240V AC 50/60Hz	4 Amp Max 25 Amp inrush	100 Watts	1.0V @ 1.5A	30G/9G	MOV
CUCSP-3-XX	MR* Sensor	Normally Open	PNP Sourcing	5-30V DC	1 Amp Max.	30 Watts	1.5V @ 0.5A Max.	50G/9G	Reverse Polarity
CUCSN-3-XX	MR* Sensor	Normally Open	NPN Sinking	5-30V DC	1 Amp Max.	30 Watts	1.5V @ 0.5A Max.	50G/9G	Reverse Polarity

Operating Frequency - 1000 Hz, Temperature Range - 14 to 176° F (-10 to 80° C), Enclosure Circuit - IP 67 (NEMA 6)
* MR = Magnetostrictive All switches are rated for wash down applications.

KEY:
XX = 11 = 1 1/8" Bore, 15 = 1 1/2" & 2" Bore,
25 = 2 1/2" & 3 1/4" Bore, 40 = 4" Bore



Made In The U.S.A.

815-639-1000 • Fax: 815-639-1001
www.pneumaticcylinders.net
email: info@pneumaticcylinders.net