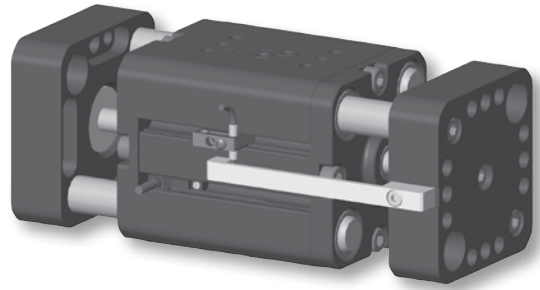


- C-bores on inside of jaws for thru mounting to increase range of applications
- Standard sensor mounting slots for magneto resistive and inductive sensors (sensors sold separately)
- End of stroke cushions reduce shock of fully open and close strokes
- Each jaw is supported by 2 shafts that extend the entire length of the body and are guided by 2 oil impregnated bronze bushings per shaft
- Hardened precision stainless steel shafting for wear resistance and long life
- Magneto resistive sensors are an alternative option to inductive sensors (magnets supplied standard)
- Top air ports can be o-ring manifold sealed to eliminate air lines
- 2 standard air port locations (front and top)
- Slip fit dowel pin holes in body and jaws
- Large jaw configuration allows for simplified finger mounting



Operating information

Operating pressure:	3 to 7 bar (44 to 102 PSIG)
Temperature range:	
Nitrile seals (Standard)	-35° to 80° C (-30° to 180° F)
Filtration requirements:	
Air filtration	40 micron or better
Air lubrication	Not necessary*
Air humidity	Low moisture content (dry)
*Addition of lubrication will greatly increase service life	

Ordering Information: P5GS Wide Body Series

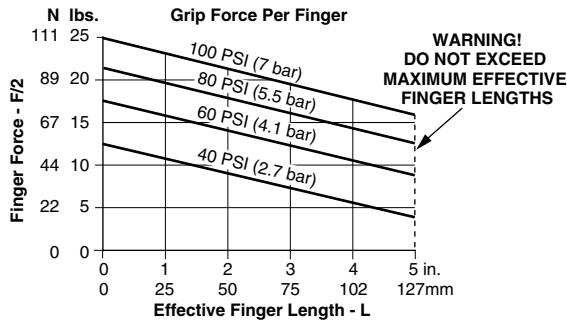
Function	Bore size (mm)	Ports (BSPP)	Stroke (mm)	Grip force @ 7 bar (N)	Accuracy +/- mm	Repeatability +/-mm	Weight (kg)	Part number
Double acting magnetic	16	M3	19.1	222	0.08	0.03	0.30	P5GS-016MSG019B
Double acting magnetic	16	M3	31.8	222	0.08	0.03	0.39	P5GS-016MSG032B
Double acting magnetic	24	M5	25.4	445	0.08	0.03	0.81	P5GS-024MSG025B
Double acting magnetic	24	M5	50.8	445	0.08	0.03	1.20	P5GS-024MSG051B
Double acting magnetic	32	M5	38.1	800	0.08	0.03	1.48	P5GS-032MSG038B
Double acting magnetic	32	M5	73.5	800	0.08	0.03	2.0	P5GS-032MSG074B

Sensor part numbers: Page 53.

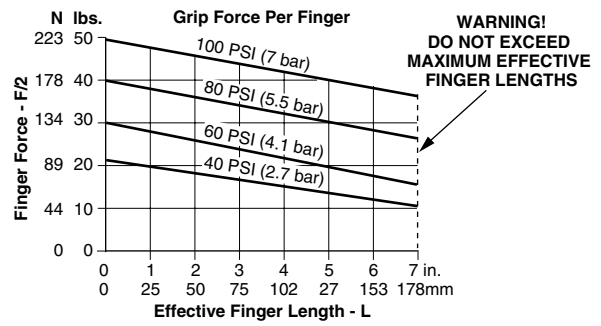
Most popular.



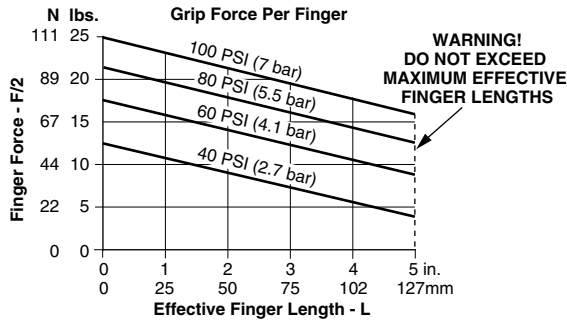
Loading information - P5GS-016MSG019B



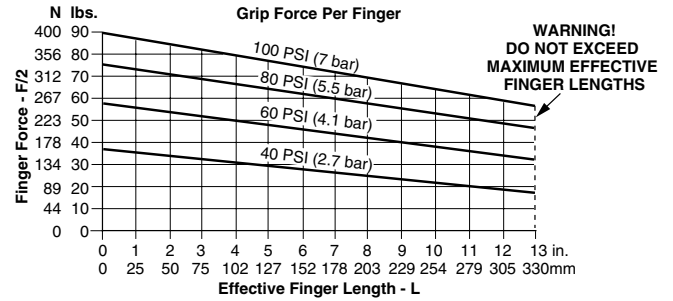
Loading information - P5GS-024MSG051B



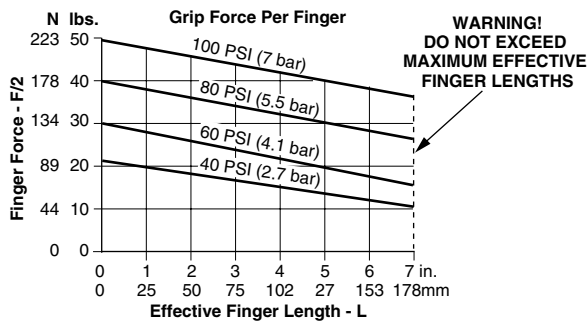
Loading information - P5GS-016MSG032B



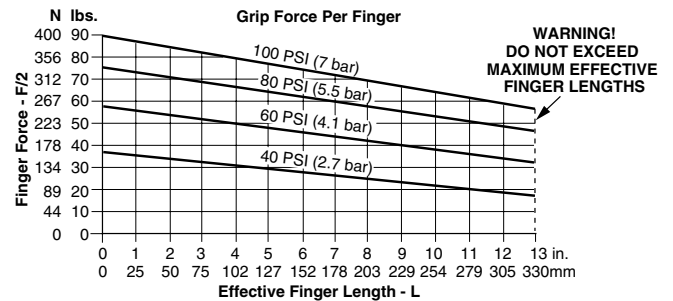
Loading information - P5GS-032MSG038B



Loading information - P5GS-024MSG025B



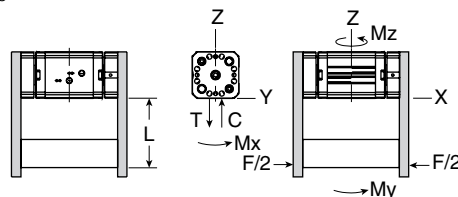
Loading information - P5GS-032MSG074B



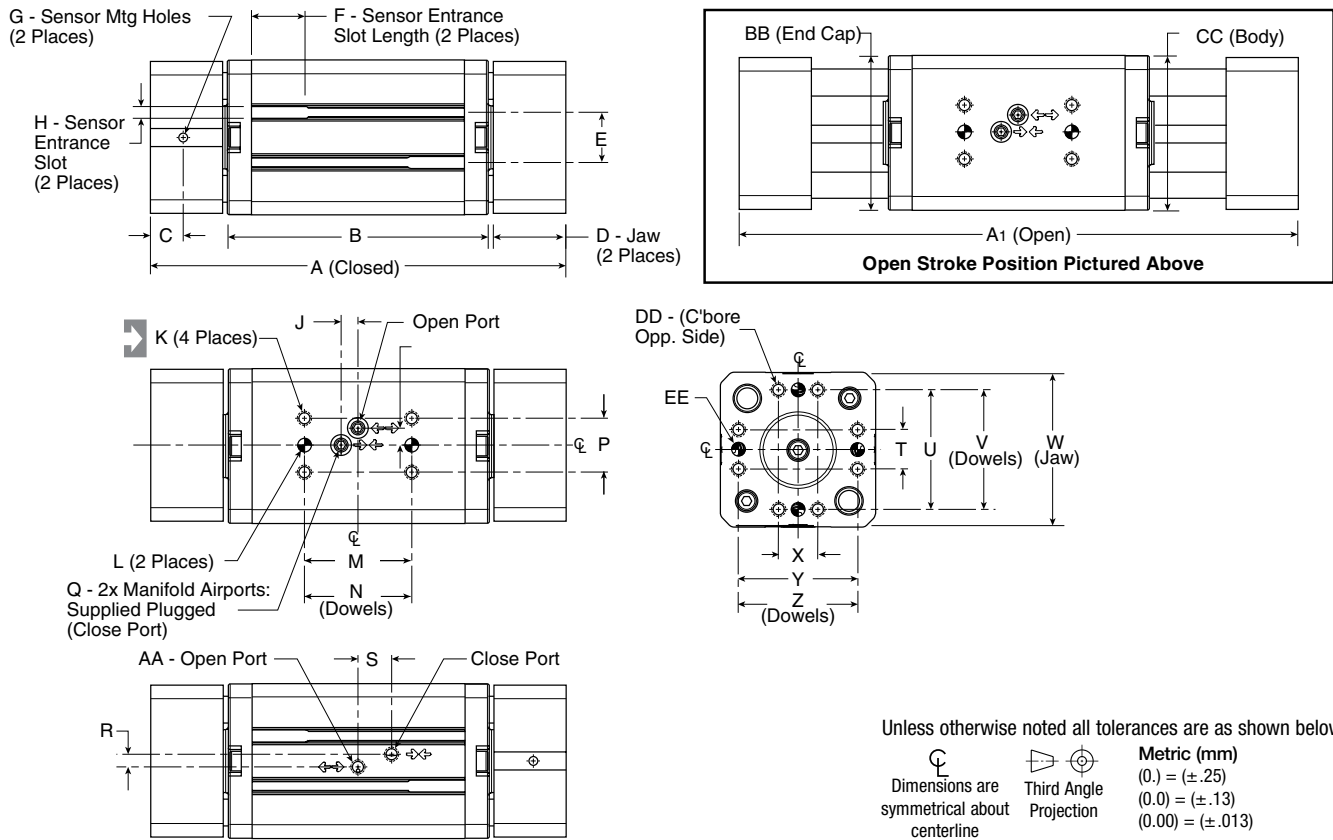
Loading capacity† - P5GS Wide Body Series

	P5GS-016M***19B		P5GS-016M***32B		P5GS-024M***25B		P5GS-024M***51B		P5GS-032M***38B		P5GS-032M***74B	
	Static (metric)	Dynamic (metric)	Static (metric)	Dynamic (metric)	Static (metric)	Dynamic (metric)	Static (metric)	Dynamic (metric)	Static (metric)	Dynamic (metric)	Static (metric)	Dynamic (metric)
Maximum tensile T	267 N	53 N	267 N	53 N	534 N	107 N	534 N	107 N	2668 N	267 N	2668 N	267 N
Maximum compressive C	267 N	53 N	267 N	53 N	534 N	107 N	534 N	107 N	2668 N	267 N	2668 N	267 N
Maximum moment Mx	14 Nm	3 Nm	14 Nm	3 Nm	24 Nm	5 Nm	24 Nm	5 Nm	68 Nm	7 Nm	68 Nm	7 Nm
Maximum moment My	20 Nm	4 Nm	20 Nm	4 Nm	34 Nm	7 Nm	34 Nm	7 Nm	102 Nm	10 Nm	102 Nm	10 Nm
Maximum moment Mz	14 Nm	3 Nm	14 Nm	3 Nm	24 Nm	5 Nm	24 Nm	5 Nm	68 Nm	7 Nm	68 Nm	7 Nm

† Capacities are per set of jaws and are not simultaneous



Dimensions: P5GS Wide Body Series



Part number	A	A ₁	B	C	D	E	F	G	H	J	K	L	M	N	P	Q
P5GS-016MSG019B	79	98	54.4	5.8	10.5	7.9	19.1	M3 x 3 Dp	4.2	4	M3 x 5 Dp	∅ 3h7 x 5 Dp	19.0	19.05	9.5	M3 x 5 Dp
P5GS-016MSG032B	104	136	67.1	7.3	16.9	7.9	19.1	M3 x 3 Dp	4.2	4	M3 x 5 Dp	∅ 3h7 x 5 Dp	19.1	19.05	9.5	M3 x 5 Dp
P5GS-024MSG025B	97	122	67.1	6.7	13.0	17.8	19.1	M3 x 4 Dp	4.2	6	M3 x 7 Dp	∅ 5h7 x 5 Dp	38.1	38.10	19.1	M5 x 7 Dp
P5GS-024MSG051B	147	198	92.5	11.7	25.7	17.8	19.1	M3 x 4 Dp	4.2	6	M3 x 7 Dp	∅ 5h7 x 5 Dp	38.1	38.10	19.1	M5 x 7 Dp
P5GS-032MSG038B	125	164	82.8	12.1	19.2	18.8	19.1	M3 x 4 Dp	4.2	6	M3 x 8 Dp	∅ 5h7 x 5 Dp	38.1	38.10	19.1	M5 x 5 Dp
P5GS-032MSG074B	177	240	108.2	14.9	39.1	18.8	19.1	M3 x 4 Dp	4.2	6	M3 x 8 Dp	∅ 5h7 x 5 Dp	38.1	38.10	19.1	M5 x 7 Dp

Part number	R	S	T	U	V	W	X	Y	Z	AA	BB	CC	DD	EE
P5GS-016MSG019B	6	10	10.0	30.0	30.00	37.6	10.0	30.0	30.00	M5 x 5 Dp	37.6	38.0	M4 x 8 Dp	∅ 4h7 x 5 Dp
P5GS-016MSG032B	6	12	10.0	30.0	30.00	37.6	10.0	30.0	30.00	M5 x 5 Dp	37.6	38.0	M4 x 8 Dp	∅ 4h7 x 5 Dp
P5GS-024MSG025B	5	11	14.0	42.5	42.50	54.0	14.0	42.5	42.50	M5 x 6 Dp	54.7	55.0	M5 x 10 Dp	∅ 5h7 x 5 Dp
P5GS-024MSG051B	5	12	14.0	42.5	42.50	54.0	14.0	42.5	42.50	M5 x 6 Dp	54.7	55.0	M5 x 10 Dp	∅ 5h7 x 5 Dp
P5GS-032MSG038B	5	15	18.0	51.0	51.00	63.0	18.0	51.0	51.00	M5 x 6 Dp	63.7	64.0	M6 x 13 Dp	∅ 6h7 x 8 Dp
P5GS-032MSG074B	5	15	18.0	51.0	51.00	63.0	18.0	51.0	51.00	M5 x 6 Dp	63.7	64.0	M6 x 13 Dp	∅ 6h7 x 8 Dp

Dimensions in millimeters