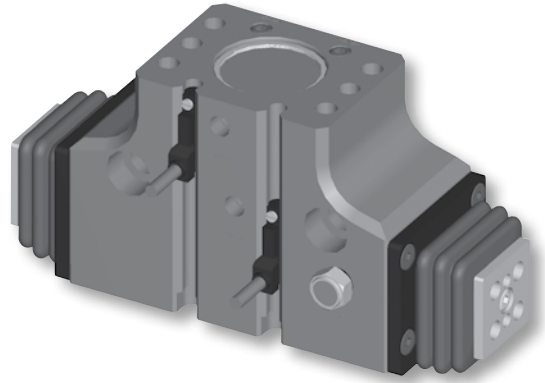


- One piece lightweight aircraft quality aluminum body
- The body and bottom plate have hard-coat anodize 60 RC with PTFE impregnation
- 3 standard air port locations (front, back, and top)
- Back and top air ports can be o-ring manifold sealed to eliminate air lines
- Standard mounting slots for magneto resistive (sensors sold separately)
- Slip fit dowel pin holes in body and jaws
- Jaws are supported throughout the length of the body
- Purge / scavenge port used with vacuum for clean room environments or positive pressure with harsh environments
- Jaw components made from hardened and precision ground steel for minimum jaw play with hard plating for wear resistance and long life
- Front-to-back thru counterbores for socket head cap screw mounting
- Magnetic piston standard



Operating information

Operating pressure:	1.5 to 7 bar (22 to 102 PSIG)
Temperature range:	
Nitrile seals (standard)	-35° to 80° C (-30° to 180° F)
Filtration requirements:	
Air filtration	40 micron or better
Air lubrication	Not necessary*
Air humidity	Low moisture content (dry)

*Addition of lubrication will greatly increase service life

Ordering Information: P5GM Parallel Series

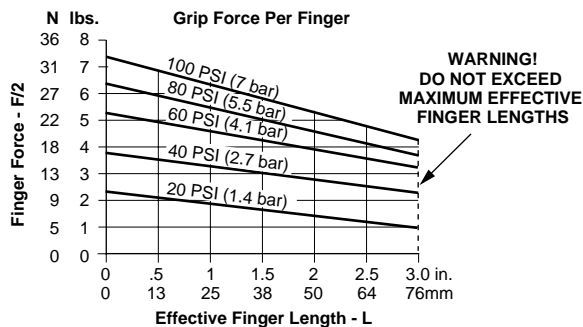
Function	Bore size (mm)	Ports (BSPP)	Stroke (mm)	Grip force @ 7 bar (N)	Accuracy +/- mm	Repeatability +/-mm	Weight (kg)	Part number
Double acting magnetic	10	M3	4.8	62	0.05	0.03	0.04	P5GM-010MSG005B
Double acting magnetic	10	M3	6.4	62	0.05	0.03	0.04	P5GM-010MSG006B
Double acting magnetic	10	M3	9.5	62	0.05	0.03	0.04	P5GM-010MSG010B
Double acting magnetic	14	M3	6.4	98	0.05	0.03	0.14	P5GM-014MSG006B
Double acting magnetic	14	M3	9.5	98	0.05	0.03	0.14	P5GM-014MSG010B
Double acting magnetic	14	M3	12.7	98	0.05	0.03	0.14	P5GM-014MSG013B
Double acting magnetic	22	M5	9.5	222	0.05	0.03	0.43	P5GM-022MSG010B
Double acting magnetic	22	M5	12.7	222	0.05	0.03	0.43	P5GM-022MSG013B
Double acting magnetic	22	M5	19.1	222	0.05	0.03	0.43	P5GM-022MSG019B
Double acting magnetic	32	M5	12.7	445	0.08	0.03	0.90	P5GM-032MSG013B
Double acting magnetic	32	M5	19.1	445	0.08	0.03	0.90	P5GM-032MSG019B
Double acting magnetic	32	M5	25.4	445	0.08	0.03	0.90	P5GM-032MSG032B

Sensor part numbers: Page 53.

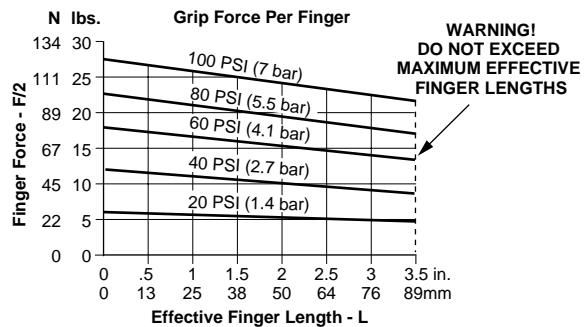
Most popular.



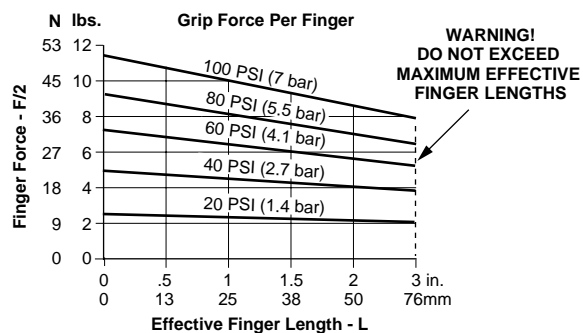
Loading information - P5GM-010



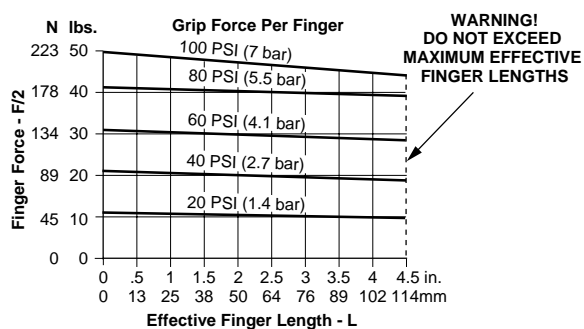
Loading information - P5GM-022



Loading information - P5GM-014



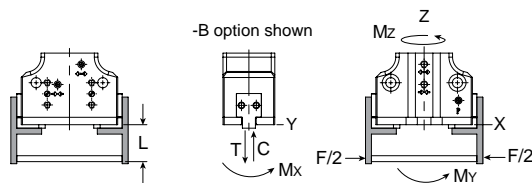
Loading information - P5GM-032



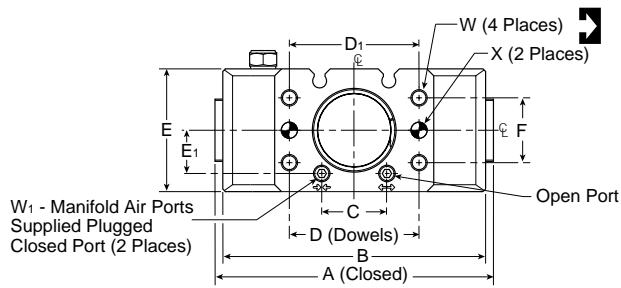
Loading capacity† - P5GM Parallel Series

	P5GM-010		P5GM-014		P5GM-022		P5GM-032	
	Static (metric)	Dynamic (metric)	Static (metric)	Dynamic (metric)	Static (metric)	Dynamic (metric)	Static (metric)	Dynamic (metric)
Maximum tensile T	445 N	67 N	556 N	111 N	1558 N	178 N	3004 N	401 N
Maximum compressive C	668 N	111 N	1113 N	111 N	2893 N	178 N	5785 N	401 N
Maximum moment Mx	10 Nm	2 Nm	13 Nm	2 Nm	28 Nm	5 Nm	73 Nm	12 Nm
Maximum moment My	10 Nm	2 Nm	13 Nm	2 Nm	28 Nm	5 Nm	73 Nm	12 Nm
Maximum moment Mz	10 Nm	2 Nm	13 Nm	2 Nm	28 Nm	5 Nm	73 Nm	12 Nm

† Capacities are per set of jaws and are not simultaneous

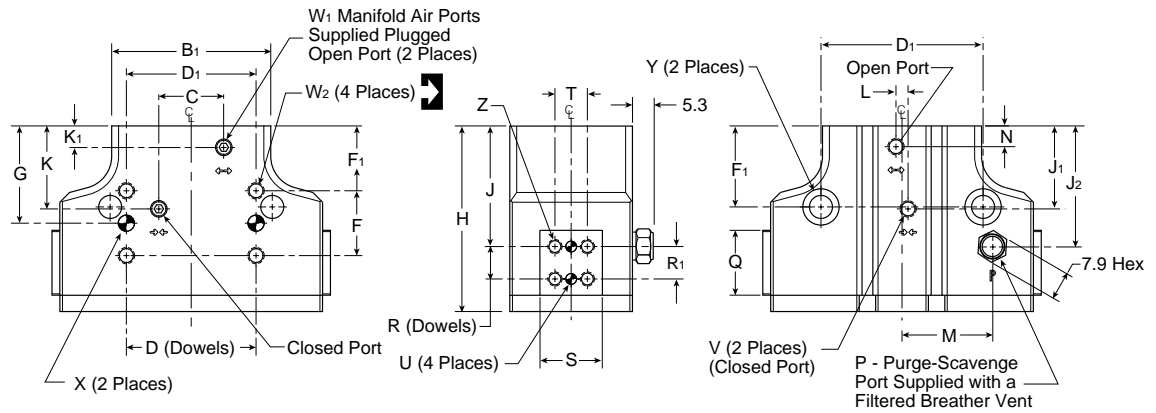


Dimensions: P5GM Parallel Series



Unless otherwise noted all tolerances are as shown below

Dimensions are symmetrical about centerline
 Third Angle Projection
Metric (mm)
 (0.) = (±.25)
 (0.0) = (±.13)
 (0.00) = (±.013)



Part number	A	B	B ₁	C	D	D ₁	E	E ₁	F	F ₁	G	H	J	J ₁	J ₂	K	K ₁	L	M	N	P
P5GM-010	45	41.4	24.4	10.2	19.05	19.1	22.2	7.9	9.5	12.7	17.5	30.7	22.4	13.5	20.3	13.5	3.6	-	14.7	3.6	M3 x 3 Dp
P5GM-014	56	52.6	31.2	10.2	19.05	19.1	24.1	8.6	9.5	15.8	20.6	36.2	26.6	15.7	23.4	15.7	3.6	-	17.3	3.6	M3 x 3 Dp
P5GM-022	82	77.2	46.7	19.1	38.10	38.1	36.1	12.7	19.1	19.1	28.6	54.5	35.4	24.4	35.6	24.4	6.1	3.6	26.7	6.1	M5 x 4 Dp
P5GM-032	103	98.8	59.7	22.9	38.10	38.1	43.2	16.5	19.1	28.6	38.1	67.0	41.6	29.2	43.2	29.2	6.4	4.1	35.1	6.4	M5 x 4 Dp

Part number	Q	R	R ₁	S	T	U	V	W	W ₁	W ₂	X	Y	Z
P5GM-010	10.67 ^{+0.003} _{-0.003}	4.76	-	10.67 ^{+0.003} _{-0.003}	6.4	∅ 2.0 H7 x 3 Dp	M3 x 3 Dp	M3 x 4 Dp	M3 x 3 Dp	M3 x 4 Dp	∅ 3 H7 x 3 Dp	∅ 7 x 4 Dp C'bore (for M4 SHCS)	M3 x 4 Dp (4 Places)
P5GM-014	12.70 ^{+0.003} _{-0.003}	4.76	-	12.19 ^{+0.003} _{-0.003}	7.1	∅ 2.5 H7 x 3 Dp	M3 x 3 Dp	M3 x 4 Dp	M3 x 3 Dp	M3 x 4 Dp	∅ 3 H7 x 3 Dp	∅ 7 x 4 Dp C'bore (for M4 SHCS)	M4 x 5 Dp (4 Places)
P5GM-022	19.05 ^{+0.003} _{-0.003}	9.53	9.5	18.29 ^{+0.003} _{-0.003}	9.5	∅ 3 H7 x 5 Dp	M5 x 3Dp	M5 x 8 Dp	M5 x 5 Dp	M5 x 6 Dp	∅ 5 H7 x 5 Dp	∅ 11 x 7 Dp C'bore (for M6 SHCS)	M4 x 6 Dp (8 Places)
P5GM-032	25.40 ^{+0.003} _{-0.003}	15.88	15.9	25.40 ^{+0.003} _{-0.003}	15.9	∅ 4 H7 x 6 Dp	M5 x 4 Dp	M5 x 8 Dp	M5 x 5 Dp	M5 x 6 Dp	∅ 5 H7 x 5 Dp	∅ 11 x 7 Dp C'bore (for M6 SHCS)	M5 x 8 Dp (8 Places)

Dimensions in millimeters