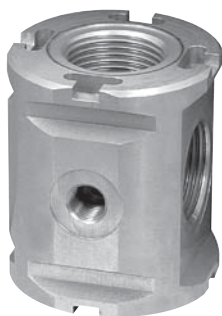


## Modular Manifold



P3Y Series Manifolds provide up to 4 extra outlet ports. They may be assembled at any position in a combination e.g. before the lubricator to provide oil free take off or at the end of a combination to provide extra outlet ports.

Thread type	Part number
BSPP	<b>P3YMA1V0N</b>
NPT	<b>P3YMA9V0N</b>

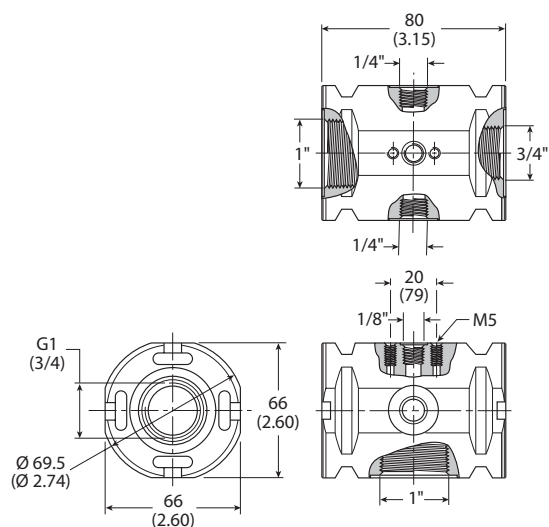
## Port sizes

Inlet port	Top	Bottom	Front and Back
3/4"	1/8"	1"	1/4"
1"	1/8"	1"	1/4"

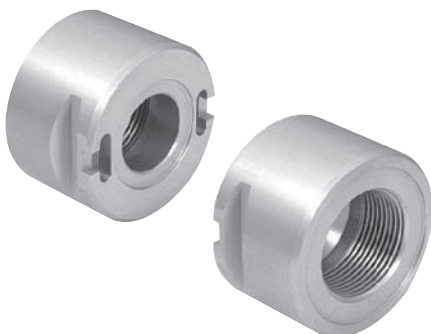
## Material specifications

Body	Aluminium
Weight	0.7 kg (1.5 lb)

## Dimensions mm (inches)



## Optional Port Block Kits



- To change port sizes Port Block Kits are available, they are attached to any unit utilizing the connecting kit.
- Allows assemblies to be removed from a hard piped system.

## Material specifications

Body	Aluminium
Weight	0.65 kg (1.43 lb)

## Options:

<b>P3YKA</b>	<b>9</b>	<b>B</b>	<b>CP</b>
Basic series	Thread type	Port size	
Port Blocks P3YKA	BSPP 1	1-1/2 B	
	NPT 9		

## Solenoid Operators - CNOMO

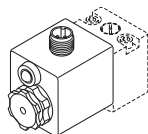
## Technical data -

## Solenoid operators, coil combinations

	NC Normal Operator with 22 x 30 standard coil	NC Normal Operator with 30 x 30 standard coil
Working pressure	0 to 10 bar	0 to 10 bar
Ambient temperature	-10°C to 60°C *	-10°C to 60°C *
Power (DC)	4.8W	2.7W
Power (AC)	8.5VA	4.9VA
Voltage tolerance	+/-10%	+/-10%
Duty cycle	100%	100%
Insulation class	F	F
Electric connection	B Industrial	DIN 43650A
Protection	IP65	IP65
Approval		UL/CSA
Working media	All neutral media such as compressed air	

\* Limited to 50°C if use with 100% duty cycle

## Solenoid Coils with M12 Connection



Voltage	Part number	Weight (Kg)
Direct current		
24VDC	<b>P2FC6449</b>	0.065

## Transients

Interrupting the current through the solenoid coil produces momentary voltage peaks which, under unfavorable conditions, can amount to several hundred times the rated operating voltage. Normally, these transients do not cause problems, but to achieve the Maximum life of relays in the circuit (and particularly of transistors, thyristors and integrated circuits) it is desirable to provide protection by means of voltage-dependent resistors (varistors). All connectors/cable plugs EN175301-803 with LED's include this type of circuit protection.

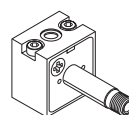
## Materials

## Pilot Valve

Body:	Polyamide
Armature tube:	Brass
Plunger & core:	Corrosion resistant Cr-Ni steel
Seals:	Fluorocarbon
Screws:	Stainless steel

## Coil

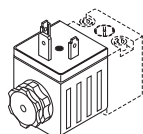
Encapsulation material:	Thermoplastic as standard Duroplast for M12 connection
-------------------------	---

Spare Base Solenoid Pilot Operator  
CNOMO NC

Description	Part number non-lock manual override	Weight (Kg)
Standard Duty	<b>P2FP23N4B</b>	0.065
No Override	<b>P2FP23N4A</b>	0.065

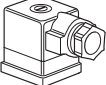
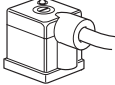
**Note:** Solenoid pilot operators are fitted to the Global range. Order the above part numbers for spares. The operators are supplied with mounting screws and interface 'O' rings. Coils and connectors must be ordered separately.

## Solenoid Coils with DIN A or Industrial B Connection

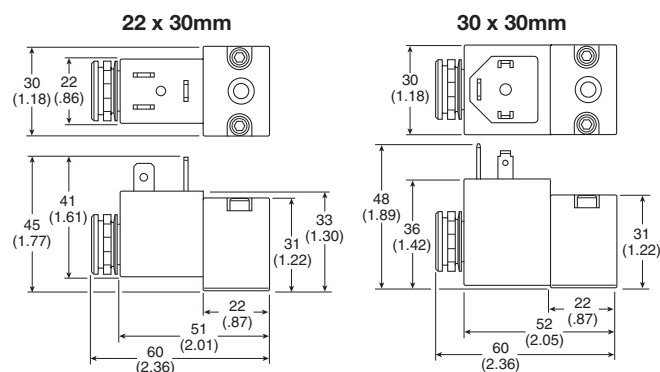


Voltage	22mm x 30mm Part number B industrial standard	Weight (Kg)	30mm x 30mm Part number DIN 43650A standard	Weight (Kg)
Direct current				
24VDC	<b>P2FCB449</b>	0.093	<b>P2FCA449</b>	0.105
Alternative current				
110V 50Hz, 120V 60Hz	<b>P2FCB453</b>	0.093	<b>P2FCA453</b>	0.105

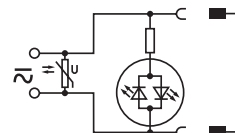
## Solenoid Connectors / Cable Plugs EN175301-803

	Description	Part number 22mm Form B Industrial	Part number 30mm Form A DIN 43650A
	Standard IP65 without flying lead	<b>PS2429BP</b>	<b>PS2028BP</b>
	With LED and protection 24VAC/DC	<b>PS243079BP</b>	<b>PS203279BP</b>
	With LED and protection 110VAC	<b>PS243083BP</b>	<b>PS203283BP</b>
	Standard with 2m cable IP65	<b>PS2429JBP</b>	<b>PS2028JCP</b>
	24VAC/DC, 2m cable LED and protection IP65	<b>PS2430J79BP</b>	<b>PS2032J79CP</b>
	110VAC/DC, 2m cable LED and protection IP65	<b>PS2430J83BP</b>	<b>PS2032J83CP</b>

## Solenoid coil dimensions mm (inches)



## Electrical schematics

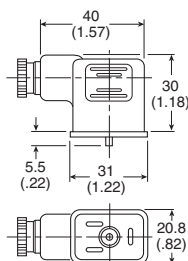


<b>PS243079BP</b>	<b>PS203279BP</b>
<b>PS2430J79BP</b>	<b>PS2032J79CP</b>
<b>PS243083BP</b>	<b>PS203283BP</b>
<b>PS2430J83BP</b>	<b>PS2032J83CP</b>
<b>PS294679BP</b>	<b>PS294683BP</b>
<b>PS2946J79BP</b>	<b>PS2946J83BP</b>

## Cable plug dimensions mm (inches)

22mm Form B industrial cable plugs

## PS2429BP



30mm DIN 43650A cable plugs

## PS2028BP

