

Modular Manifold



P3Y Series Manifolds provide up to 4 extra outlet ports. They may be assembled at any position in a combination e.g. before the lubricator to provide oil free take off or at the end of a combination to provide extra outlet ports.

Thread type	Part number
BSPP	P3YMA1V0N
NPT	P3YMA9V0N

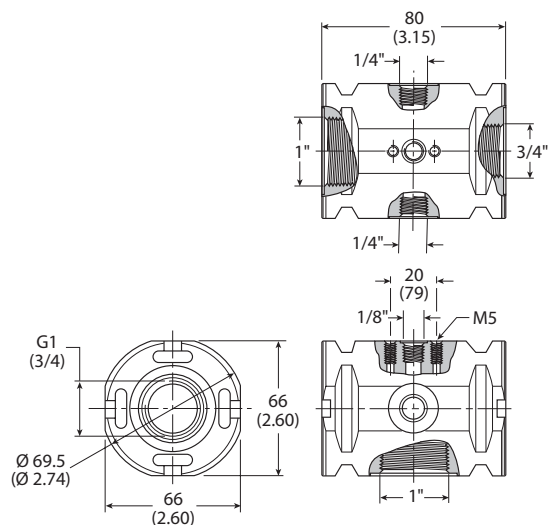
Port sizes

Inlet port	Top	Bottom	Front and Back
3/4"	1/8"	1"	1/4"
1"	1/8"	1"	1/4"

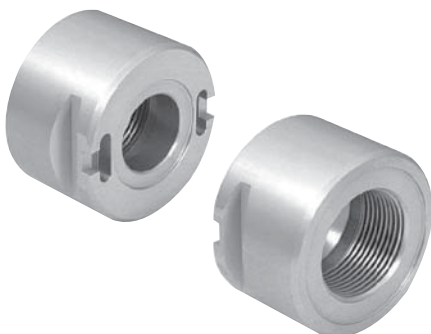
Material specifications

Body	Aluminium
Weight	0.7 kg (1.5 lb)

Dimensions mm (inches)



Optional Port Block Kits



- To change port sizes Port Block Kits are available, they are attached to any unit utilizing the connecting kit.
- Allows assemblies to be removed from a hard piped system.

Material specifications

Body	Aluminium
Weight	0.65 kg (1.43 lb)

Options:

P3YKA	9	B	CP
Basic series	Thread type	Port size	
Port Blocks P3YKA	BSPP 1	1-1/2 B	
	NPT 9		