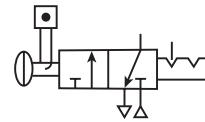


Modular Ball Valve



Symbol



- Positive bubble tight shut-off
- 90° turn handle to prevent unauthorized adjustment
- Pad lockable (up to 6 times)
- When the inlet pressure is turned off the downstream vents through the exhaust port

Ball / Lockout Valve shuts off downstream line pressure in the closed position with a 90° turn of the handle. In the closed position, inlet air pressure is blocked and downstream / system air is exhausted through a threaded port. To prevent unauthorized adjustment, the padlock slide may be assembled on either side. It is recommended that this slide is installed after final system assembly.

The Safety Lockout valves conform to OSHA #29 CFR part 1910 – control of hazardous energy source (lockout / tagout).

Options

P3YVA		9	6	LBN
Basic series		Thread type*	Port size	
Modular Ball Valve	P3YVA	BSPP 1	3/4 6	
		NPT 9	1 8	

* Note: For 1-1/2" ported unit, please order P3YKA*BCP port block kit separately.
Bold items are most common.

Specifications

Flow capacity	3/4"	333 dm ³ /s (705.6 psig)
	1"	333 dm ³ /s (705.6 psig)
Max. pressure air pilot operated	17.5 bar (254 psig)	
Operating temperature	-10°C to 60°C (14°F to 140°F)	
Weight	3/4"	1.1 kg (2.4 lb)
	1"	1.1 kg (2.4 lb)

Material Specifications

Body	Aluminium
Valve ball	Brass / Nickle plated
Handle	Aluminum
Seals	Nitrile NBR
Exhaust silencer	Sintered bronze

Dimensions mm (inches)

