

GOLD RING Series S, 22, 23 Two-Way Hot Water and Steam Valves

SPECIFICATIONS

Mechanical Characteristics

Standard Materials of Construction

- Body-Brass, 303 Stainless Steel as listed
- Seals-Ethylene Propylene or PTFE and FKM
- Plunger and Pole Piece- 430FR Stainless Steel
- Plunger Tube - 305 Stainless Steel
- Springs-302 Stainless Steel
- Shading Coil-Copper (Brass Bodies), Silver (Stainless Steel Bodies)
- Disc Holder (Normally Open Valves)- 50 psi Steam: Ryton, 125 psi Steam: 303 Stainless Steel
- Pilot Seats-Nickel Plated Brass

Compatible Fluids

- Ideal for the control of hot water and steam

Electrical Characteristics

Voltages

- DC-6, 12, 24, 120, 125 (other voltages available upon request)
- AC-24/60, 110/120-50/60, 220/240-50/60, 440/480-50/60

Coil

- Class F Standard, Class H Available

Agency Approvals

- Standard valves with general purpose or explosion proof solenoid enclosures are UL Listed and CSA Certified. For details, consult factory.

Miscellaneous

Temperature Ratings (media as listed)

- AC Voltages: 353°F max.
- DC Voltages: 150°F max.
- Ambient: 32-77°F (standard)
- For temperature variations consult the factory.

Installation

- Valves should be mounted vertical and upright. See mounting dimensions (nominal) shown here. For certified dimensions, consult factory.

Applications

- Used in a variety of applications including: Dry Cleaning, Steam Irons, Steam Baths, Autoclaves, Molding, Steam Atomization, Sterilizers and Laundry Equipment.
- Series S0 Valves are direct acting valves; Series S4 and Series S5 are offset or center pilot valves; Series S3 valves are hung diaphragm with integral seats.

BRASS HOT WATER AND STEAM VALVES – NORMALLY CLOSED (ENERGIZE TO OPEN), ETHYLENE PROPYLENE OR PTFE SEALS

AC VALVE SPECIFICATIONS

NPT Pipe Size	Orifice Diameter		Flow Factor		Operating Pressure Differential						Max. Temp.		AC Watt	Const. Ref.	Valve Part Number	
	inch	mm	Cv	Kv	Min. (PSI/Bar)		Max. (MOPD)		Notes	°F	°C					
							Steam (PSI/Bar)	Hot Water (PSI/Bar)								
1/4	5/32	3.97	.52	0.45	0	0.00	11	0.76	-	-	1	344	173	11.0	56	04FS0C3410ACH
3/8	1/2	12.70	3.00	2.59	1	0.07	50	3.45	-	-	2,4	300	149	11.0	57	06FS5C2332ACF
3/8	1/2	12.70	3.00	2.59	1	0.07	80	5.52	-	-	3	320	160	11.0	57	06FS5C2432ACF
3/8	1/2	12.70	3.00	2.59	1	0.07	125	8.62	-	-	3	353	178	11.0	57	06FS5C2432ACH
3/8	5/8	15.88	3.00	2.59	0	0.00	50	3.45	150	10.34	4	300	149	11.0	58	06FS3C2340ACF
1/2	1/2	12.70	3.60	3.10	1	0.07	50	3.45	-	-	2,4	300	149	11.0	57	08FS5C2332ACF
1/2	1/2	12.70	3.60	3.10	1	0.07	80	5.52	-	-	3	320	160	11.0	57	08FS5C2432ACF
1/2	1/2	12.70	3.60	3.10	1	0.07	125	8.62	-	-	3	353	178	11.0	57	08FS5C2432ACH
1/2	5/8	15.88	4.00	3.45	0	0.00	50	3.45	150	10.34	4	300	149	11.0	58	08FS3C2340ACF
3/4	3/4	19.05	7.40	6.38	1	0.07	50	3.45	-	-	2,4	300	149	11.0	59	12FS5C2348ACF
3/4	3/4	19.05	7.40	6.38	1	0.07	80	5.52	-	-	3	320	160	11.0	59	12FS5C2448ACF
3/4	3/4	19.05	7.40	6.38	1	0.07	125	8.62	-	-	3	353	178	11.0	59	12FS5C2448ACH
3/4	3/4	19.05	5.00	4.31	0	0.00	50	3.45	150	10.34	4	300	149	11.0	60	12FS3C2348ACF
1	1	25.40	12.20	10.52	1	0.07	50	3.45	150	10.34	4	300	149	11.0	61	16FS5C2364ACF
1	1	25.40	12.20	10.52	1	0.07	80	5.52	-	-	3	320	160	11.0	61	16FS5C2464ACF
1	1	25.40	12.20	10.52	1	0.07	125	8.62	-	-	3	353	178	11.0	61	16FS5C2464ACH
1 1/4	1 1/8	28.58	15.00	12.93	5	0.34	50	3.45	150	10.34	4	300	149	6.0	62	20FS4C2372AAF
1 1/2	1 1/2	38.10	22.50	19.40	5	0.34	50	3.45	150	10.34	4	300	149	6.0	63	24FS4C2380AAF

BRASS HOT WATER AND STEAM VALVES— NORMALLY OPEN (ENERGIZE TO CLOSE), ETHYLENE PROPYLENE OR PTFE SEALS

AC VALVE SPECIFICATIONS

NPT Pipe Size	Orifice Diameter		Flow Factor		Operating Pressure Differential				Notes	Max. Temp.		AC Watt	Const. Ref.	Valve Part Number		
	inch	mm	Cv	Kv	Min. (PSI/Bar)	Max. (MOPD)		°F		°C						
						Steam (PSI/Bar)	Hot Water (PSI/Bar)									
3/8	1/2	12.70	3.00	2.59	1	0.07	125	8.62	-	-	3	353	178	11.0	64	06FS5O2432ACH
1/2	1/2	12.70	3.60	3.10	1	0.07	125	8.62	-	-	3	353	178	11.0	64	08FS5O2432ACH
3/4	3/4	19.05	7.40	6.38	1	0.07	125	8.62	-	-	3	353	178	11.0	65	12FS5O2448ACH
1	1	25.40	12.20	10.52	1	0.07	125	8.62	-	-	3	353	178	11.0	66	16FS5O2464ACH
1 1/2	1 1/2	38.10	22.50	19.40	5	0.34	50	3.45	-	-	4	300	149	11.0	67	24FS4O2380ACF

1. Valve contains stainless steel valve body.
2. Valve contains stainless steel seat and ethylene propylene elastomers.
3. Valve contains stainless steel seat and PTFE elastomers.
4. Valves with ethylene propylene elastomers are limited to 50 psi and 300°F (149°C). Do not use on higher pressure steam with pressure reducing valve, since this may result in super heated steam.

BRASS HOT WATER AND STEAM VALVES— NORMALLY CLOSED (FOR NORMALLY OPEN CONSULT FACTORY), ETHYLENE PROPYLENE OR PTFE SEALS

DC VALVE SPECIFICATIONS

NPT Pipe Size	Orifice Diameter		Flow Factor		Operating Pressure Differential				Notes	Max. Temp.		AC Watt	Const. Ref.	Valve Part Number		
	inch	mm	Cv	Kv	Min. (PSI/Bar)	Max. (MOPD)		°F		°C						
						Steam (PSI/Bar)	Hot Water (PSI/Bar)									
3/8	5/8	15.88	3.00	2.59	5	0.34	-	-	100	6.90	-	150	66	11.5	58	06F22C2340A3F
3/8	5/8	15.88	3.00	2.59	0	0.00	-	-	40	2.76	-	150	66	11.5	58	06F23C2340A3F
1/2	5/8	15.88	4.00	3.45	5	0.34	-	-	100	6.90	-	150	66	11.5	58	08F22C2340A3F
1/2	5/8	15.88	4.00	3.45	0	0.00	-	-	40	2.76	-	150	66	11.5	58	08F23C2340A3F
3/4	3/4	19.05	5.00	4.31	5	0.34	-	-	100	6.90	-	150	66	11.5	60	12F22C2348A3F
3/4	3/4	19.05	5.00	4.31	0	0.00	-	-	40	2.76	-	150	66	11.5	60	12F23C2348A3F

DRAWINGS

Technical drawing showing side and front views of a normally open valve. Dimensions include: 1-23/32, 1-17/32, 7/8, 1-3/16, 4-1/16, 2-27/32, 1/2 NPT, 2-5/16 NPT, 3-25/32, 3-25/32, 4-7/16, 2-15/32, 3-3/16, and 3-3/16. A photograph of the valve is shown below the drawing.

#61, 66

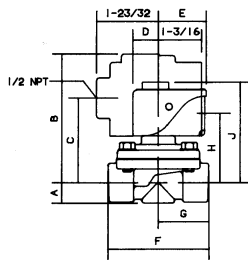
Technical drawing showing side and front views of a normally closed valve. Dimensions include: 1-23/32, 1-17/32, 7/8, 1-3/16, 1-13/16, 2-11/32, 1/2 NPT, A, 2-13/32, B, C, D, E, F, G, and H. A photograph of the valve is shown below the drawing.

#57, 59, 64, 65

To choose a solenoid for your valve, refer to the AC or DC chart found on the flap attached to the back cover of this catalog.

Series S, 22, 23 Two-Way

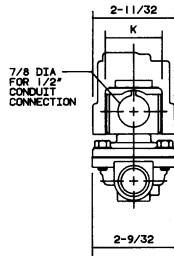
DRAWINGS



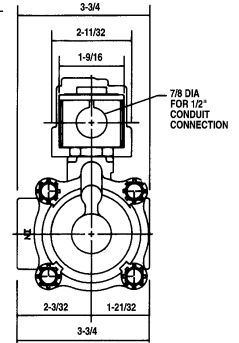
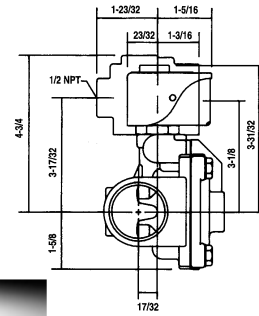
Drawing 58 Drawing 60

A	9/16	11/16
B	3 9/16	3 21/32
C	2 11/32	2 7/16
D	7/8	7/8
E	1 17/32	1 17/32
F	2 13/16	2 29/32
G	1 13/32	1 15/32
H	2	2 1/4
I	3 9/32	3 3/8
J	1 13/16	1 13/16

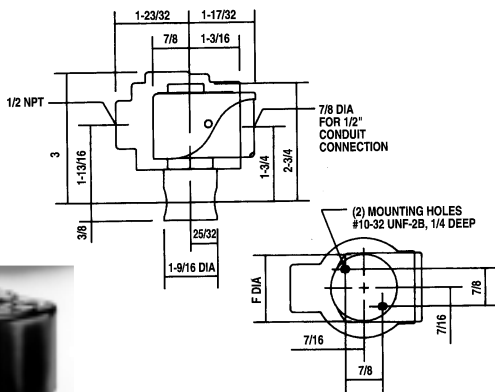
Explosion-Proof/Watertight Shown in Outline



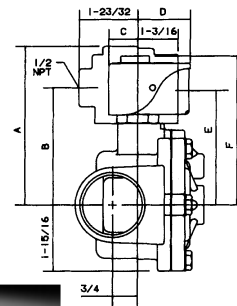
#58, 60



#62



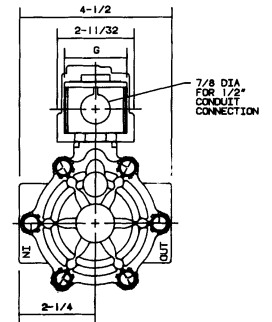
#56



Drawing 63 Drawing 67

A	4 31/32	4 21/32
B	3 23/32	3 7/16
C	23/32	7/8
D	1 5/16	1 17/32
E	3 5/16	3 3/8
F	4 5/32	4 3/8
G	1 9/16	1 13/16

Explosion-Proof/ Watertight Shown in Outline



#63, 67