



Bulletin PM-ERV-B/USA

# Maintenance Instruction & Parts List

Revision Date: September 2005  
Supersedes: April 2002

---



## ERV Series Value Line Rodless Linear Actuator



FAILURE OR IMPROPER SELECTION OR IMPROPER USE OF THE PRODUCTS AND/OR SYSTEMS DESCRIBED HEREIN OR RELATED ITEMS CAN CAUSE DEATH, PERSONAL INJURY AND PROPERTY DAMAGE.

This document and other information from Parker Hannifin Corporation, its subsidiaries and authorized distributors provide product and/or systems options for further investigation by users having technical expertise. It is important that you analyze all aspects of your application and review the information concerning the product or system in the current product catalog. Due to the variety of operating conditions and applications for these products or systems, the user, through its own analysis and testing, is solely responsible for making the final selection of the products and systems and assuring that all performance, safety and warning requirements of the application are met.

The products described herein, including without limitation, product features, specifications, designs, availability and pricing, are subject to change by Parker Hannifin Corporation and its subsidiaries at any time without notice.



## Offer of Sale

The items described in this document are hereby offered for sale by Parker Hannifin Corporation, its subsidiaries or its authorized distributors. This offer and its acceptance are governed by the provisions stated on the separate page of this document entitled "Offer of Sale".

| Description                                     | Page Number |
|---|-------------|
| General   | 3           |
| Exploded Actuator View                          | 4           |
| Carriage Assembly & Carriage Preload Adjustment | 4           |
| Carriage Drive Belt Tension                     | 5           |
| Lubrication                                     | 6           |
| Actuator Mounting                               | 6           |
| Roller Wheel Wiper Accessory                    | 6           |
| Bumper Accessory                                | 7           |
| Hall Effect & Reed Switches                     | 7           |
| Fastener Torque Table                           | 8           |
| Generic Parts List                              | 9           |
| Offer of Sale                                   | 10          |

## General

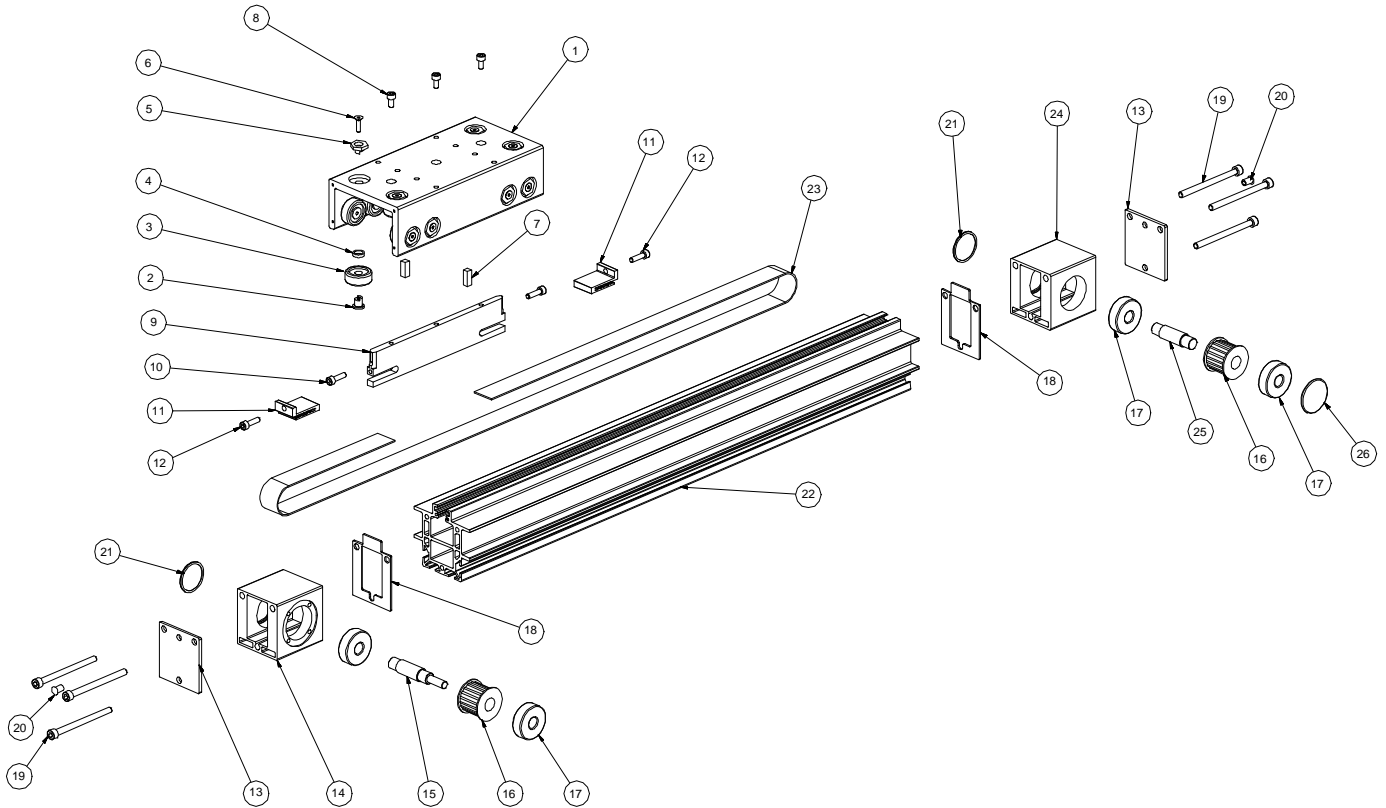
This guide contains maintenance instructions, replacement parts information, and information on various actuator options. Consult the factory or the Product Catalog for additional information.

ERV Series Linear slides are electromechanical belt driven actuators. The mechanical capabilities and response of the units are greatly dependent on the entire drive train system including the motor or motor and gearbox combination.

In both size units an extended carriage option is offered. This option increases the actuator carriage length and significantly increases the load carrying capacity of the carriage. Please note that this option does not alter the actuator body. The body may require additional support along its length.

See the Product Catalog for additional design considerations.



**Exploded View****Carriage Assembly & Preload Adjustment**

When the actuators come from the factory the carriage wheels will be preloaded. If over the course of time the actuator becomes damaged or the preload is lost the wheels can be easily adjusted or if necessary replaced in the following manner.

1. Use good general safety guide lines when working on any type of machinery
2. Review the specific application for any potential personal injury and property damage while servicing the actuator.
3. Disconnect all power to the actuator.
4. If the actuator is equipped with end of travel bumpers, remove the bumper assemblies on the idler (not the motor) end of the actuator.
5. Disconnect the carriage from the shuttle by removing the three carriage bolts (8).
6. Roll the carriage off the end of the body extrusion. Note, the actuator is designed so that the carriage assembly can be removed for carriage maintenance purposes without disturbing the drive belt tension.

\*\*\* DO NOT REMOVE THE CARRIAGE ROLLER WHEELS FROM THE CARRIAGE AT THIS TIME \*\*\*

7. Review the hex nuts/roller cams (5) on the carriage. Take special note that on half of the hexes the bolt is off center inside the hex. These are the cams that produce the preload in the carriage. The other half of the hexes have the bolts in the center. These are the main load bearing roller wheels.
8. Use a removable marker of some type to identify what locations on the carriage use the off center cams. This will help you to put the carriage back together the same way (i.e. positively or negatively loaded carriage – see the product catalog for a description).

9. Only after marking the cam locations should you remove a roller assembly. If a roller needs to be replaced or the preload needs to be adjusted, remove the wheel retainer screw in combination with the appropriate sized hex wrench.

\*\*\* Note: Using a socket is the best way to get a firm grip on the roller cams (5). \*\*\*

10. If you are adjusting the preload skip to step 14, otherwise continue.
11. If you are replacing a roller you will need to remove the bearing retainer (2) from the inside of the roller wheel (3). The fit between the two pieces is tightly controlled. They will probably fall apart but they can be disassembled with finger pressure. Do not use a hammer etc.
12. Insert the bearing retainer into the roller wheel assembly.
13. Reinstall the wheel washer (4).
14. Apply a drop of removable anaerobic adhesive (thread locking agent – ex. Loctite®) to the internal threads of the bearing retainer (2).
15. Pass the wheel retainer screw (6) through the appropriate style of roller cam (i.e. on-center or off-center). At this time take special note that there are interlocking steps milled on both the cam and the bearing retainer. The interlocking steps allow you to preload the carriage while the carriage is on the body extrusion.
16. Assemble the cam through the carriage body itself and engage the thread of the wheel retainer screw into the bearing retainer.
17. Finger tighten the wheel retainer screw while taking caution to make sure the two steps interlock.
18. If this particular cam is one with the screw in the center (i.e. for the load bearing wheels), tighten the screw to the proper torque per the specification in the rear of this instruction. Otherwise wait to tighten the screw if the following carriage preloading discussion.
19. Roll the carriage back onto the extruded cylinder body.

**Adjusting the Carriage Preload** – Since this step is “Pre-loading” of a carriage assembly, we will only be discussing the off center roller cams. The other cams should be properly torqued at this point.

20. Use the socket to rotate the hex/cam until the roller underneath the carriage comes into contact with the body extrusion. This is identified by a slight increase to the amount of torque required to turn the cam/socket. It is very beneficial at this point to turn the cam past the maximum preload point so that you can feel the maximum and more importantly the minimum/contact point. This also verifies that the wheel retainer screw is not tightening and you are preloading the carriage.

Note: Any more than a minimal amount of preload puts unnecessary stress/load on the main carriage bearings and roller tire material.

21. Turn the cam back to the point at which the wheel comes into contact with the body extrusion.
22. While holding the cam in a fixed position with the socket, tighten the wheel retainer screw (6) and torque it to the specification in the rear of this instruction.
23. Be sure to adjust the wheels evenly on all three sides so that the carriage runs parallel with the body.

Note: If several of the wheels have lost their preload it may be difficult to immediately find the contact point. You may need to tighten a few of the questionable wheels and then adjust them one at a time.

## Belt Tension

Tension the actuator drive belt (23) using either an inductive or laser based frequency meter. See the manual for the specific meter you have chosen for specific setup and use instructions.

1. After installation of the belt into the actuator body and the belt clamps (11), tighten the belt by hand using the belt clamp bolts (12).
2. Space the carriage assembly, that is attached to the belt by way of the shuttle, away from one of the endcaps by a distance “L” (see below chart). “L” should be measured from the centerline of the drive endcap to the attachment point of the belt to the shuttle (belt clamp bolts). Use the largest measurement possible from the chart below for tensioning (i.e. an actuator with an 850mm stroke would use the 500mm measurement).



3. Place the meter sensor approximately half way between the endcap and the carriage (i.e. "L"/2).
4. Vibrate the belt.
5. Adjust the tension of the belt by tightening or loosening the belt clamp screws (12) appropriately. This can be done through the access hole in the endcap cover plate or with a ball end hex wrench.
6. After the belt has been properly tensioned, install the plastic plugs (20) in the endcap access holes (if required).

| Belt Frequency |                          |                          |
|----------------|--------------------------|--------------------------|
| "L"<br>(mm)    | ERV56<br>(Hz $\pm$ 4 Hz) | ERV80<br>(Hz $\pm$ 4 Hz) |
| 100            | 353                      | 357                      |
| 200            | 176                      | 178                      |
| 500            | 71                       | 71                       |
| 1000           | 35                       | 36                       |

## Lubrication

The wheel and pulley bearings are pre-lubricated for the life of the unit. No additional lubrication is necessary.

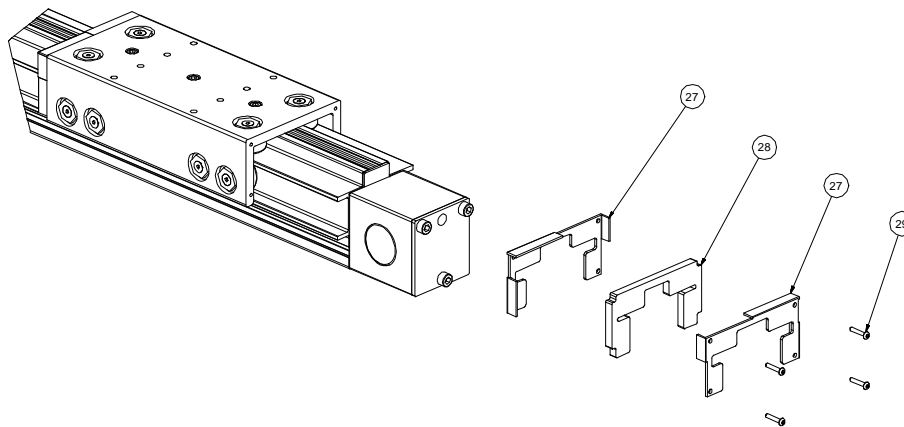
## Actuator Mounting

The ERV units should only be mounted down by way of the T-slots on the body of the unit. The endcaps should never be used as mounting points. The mounting holes provided on the carriage as well as the T-slots are designed to accommodate standard Parker Hannifin IPS mounting brackets in the 28mm and 40mm profile sizes (ERV56 and ERV80 respectively).

See the ERV product catalog for additional mounting gussets.

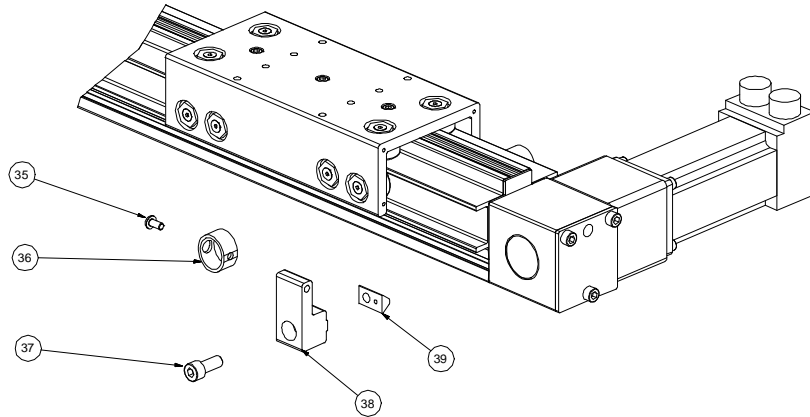
## Roller Wheel Wiper Accessory

A roller wheel wiper accessory is offered for applications where large particles may accumulate on the wheel rails. This is constructed of a felt pad on either end of the carriage which will wipe the rails before the wheels pass over. Below is a parts layout for this option.



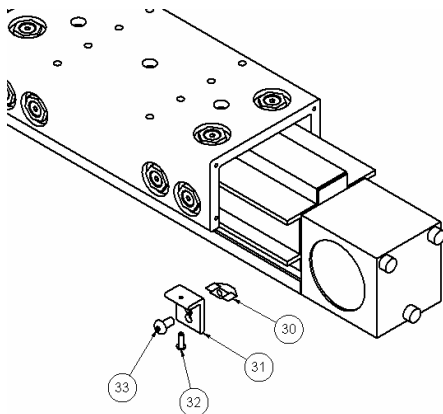
### Bumper Accessory

External bumpers are available on these units for safety reasons or as emergency stops. These bumpers are designed as safety stops only and should not be used as end of stroke stops. Continuously using them as end of stroke stops may damage the drive train. See the diagram below for an exploded view of the bumper option.



### Hall Effect & Reed Switches

Hall Effect and Reed switches are available for sensing the position of the carriage. This is accomplished by detecting the magnet attached to the carriage. Magnets come as standard on all units. The switches may be attached to either of the side T-slots on the actuator body and are easily adjusted to any position along the length. See the figure below for the mounting bracket hardware needed for the switches.



| Description                         | Part Number |
|-------------------------------------|-------------|
| Preassembled Mounting Kit For ERV56 | SCV5        |
| Preassembled Mounting Kit For ERV80 | SCV8        |

| Item | Description                   | Part Number    |
|------|-------------------------------|----------------|
| 30   | Drop In "Z" Nut               | 20-038         |
| 31   | Switch Bracket                | ERV56M10       |
| 32   | Switch Mounting Screw         | CB-CM3X0.5-010 |
| 33   | Switch Bracket Mounting Screw | CB-CM5X0.8-010 |

Note: The components for each of the kits are identical. The difference between the kits is location of item #33 in the switch bracket.

| Hall Effect Sensors |      |              |       |                                   |
|---------------------|------|--------------|-------|-----------------------------------|
| Part Number         | Type | LED Color    | Logic | Cable/Connector                   |
| SMHnn-1P            | N.O. | Green        | PNP   | 1.5M Cable<br>With Leads          |
| SMHnn-1N            | N.O. | Red          | NPN   |                                   |
| SMCnn-1P            | N.C. | Yellow       | PNP   |                                   |
| SMCnn-1N            | N.C. | White or Red | NPN   |                                   |
| SMHnn-1PC           | N.O. | Green        | PNP   | 150mm Cable<br>With Quick Dis. ** |
| SMHnn-1NC           | N.O. | Red          | NPN   |                                   |
| SMCnn-1PC           | N.C. | Yellow       | PNP   |                                   |
| SMCnn-1NC           | N.C. | White or Red | NPN   |                                   |

| Reed Switches |      |           |         |                                   |
|---------------|------|-----------|---------|-----------------------------------|
| Part Number   | Type | LED Color | Rating  | Cable/Connector                   |
| SMRnn-1       | N.O. | Green     | Hi Amp  | 1.5M Cable<br>With Leads          |
| SMRnn-1L      | N.O. | Red       | Low Amp |                                   |
| SMDnn-1L      | N.C. | Yellow    | Low Amp |                                   |
| SMRnn-1LC     | N.O. | Red       | Low Amp | 150mm Cable<br>With Quick Dis. ** |
| SMDnn-1LC     | N.C. | Yellow    | Low Amp |                                   |

“nn” represents place holders for the purpose of ordering pre-assembled mounting brackets for the ERV product line. Replace the “nn” with “V5” or “V8” depending on the size actuator. Note: leave blank for the switch only

\*\* Extension cables with mating quick disconnects are purchased separately

**Fastener Torque Table**

| Item | Description             | Qty | ERV56 |      |        | ERV80 |      |        |
|------|-------------------------|-----|-------|------|--------|-------|------|--------|
|      |                         |     | Size  | N-m  | in-lbs | Size  | N-m  | in-lbs |
| 6    | WHEEL RETAINER SCREWS   | 12  | M5    | 5.1  | 45     | M6    | 7.9  | 70     |
| 8    | CARRIAGE BRACKET SCREWS | 3   | M5    | 9.6  | 85     | M5    | 9.6  | 85     |
| 19   | END CAP SCREWS          | 6   | M6    | 15.8 | 140    | M6    | 15.8 | 140    |
| 29   | WIPER PLATE SCREWS      | 8   | M3    | 0.1  | 1      | M4    | 0.1  | 1      |
| 35   | BUMPER SCREWS           | 4   | M6    | 0.6  | 4      | M6    | 0.6  | 4      |
| 37   | BUMPER T-SLOT SCREWS    | 4   | M6    | 15.8 | 140    | M8    | 39.6 | 350    |
| 43   | INLINE COUPLING BOLT    | 1   | M3    | 1.2  | 11     | M6    | 5.1  | 85     |





**Generic Part List**

| ITEM # | DESCRIPTION                              | QTY   | ERV56            | ERV80             |
|--------|--|-------|------------------|-------------------|
| 1      | Carriage/Extended carriage               | 1     | ERV56R03(E)      | ERV80R03(E)       |
| 2      | Bearing retainer                         | 12/24 | ERV56R02         | ERV80R02          |
| 3      | Roller wheel assemblies                  | 12/24 | ERV56RCA         | ERV80RCA          |
| 4      | Wheel washer                             | 12/24 | WS-FHS-CM08      | WS-FHS-CM12       |
| 5      | Concentric roller cam                    | 6/12  | ERV56R01         | ERV80R01          |
| 5      | Eccentric roller cam                     | 6/12  | ERV56R04         | ERV80R04          |
| 6      | Wheel retainer screws                    | 12/24 | CF-CM5X0.8-018-Z | CF-CM6X1.0-020-Z  |
| 7      | Magnet                                   | 2     | ET32M10          | ET32M10           |
| 8      | Carriage bracket screws                  | 3     | CS-CM5X0.8-010-Z | CS-CM5X0.8-016-Z  |
| 9      | Carriage shuttle bracket                 | 1     | ERV56M03         | ERV80M03          |
| 10     | End of stroke stop screw – std. carriage | 2     | CS-CM5X0.8-020-Z | CS-CM5X0.8-020-Z  |
| 10     | End of stroke stop screw – ext. carriage | 2     | CS-CM5X0.8-090-Z | CS-CM5X0.8-080-Z  |
| 11     | Belt clamp                               | 2     | ER80R09          | ERV80R09          |
| 12     | Belt clamp bolts                         | 2     | CS-CM5X0.8-020-Z | CS-CM5X0.8-020-Z  |
| 13     | End Cap cover plate                      | 2     | ERV56M04         | ERV80M04          |
| 14     | Drive end cap                            | 1     | ERV56E02         | ERV80E02          |
| 15     | Belt drive shaft                         | 1     | ERV56S02         | ERV80S02          |
| 16     | Pulley                                   | 2     | ERV56P01         | ERV80P01          |
| 17     | Pulley bearings                          | 4     | RA446            | RA447             |
| 18     | Body cover plate                         | 2     | ERV56M15         | ERV80M15          |
| 19     | End cap screws                           | 6     | CS-CM6X1.0-080   | CS-CM6X1.0-110    |
| 20     | Access hole plug                         | 2     | 18-710           | 18-710            |
| 21     | Bearing rear cover plate                 | 2     | ERV56M16R        | ERV80M16R         |
| 22     | Extrusion body                           | 1     | ERV56CXXXX       | ERV80CXXXX        |
| 23     | Belt material                            | 1     | ER80B01BSC       | ERV80B01BSC       |
| 23     | Belt material – high performance         | 1     | ER80B02BSC       | ERV80B02BSC       |
| 24     | Idler end cap                            | 1     | ERV56E01         | ERV80E01          |
| 25     | Belt idler shaft                         | 1     | ERV56S01         | ERV80S01          |
| 26     | Bearing front cover plate                | 1     | ERV56M16F        | ERV80M16F         |
| 27     | Wheel wiper plate                        | 4     | ERV56M05         | ERV80M05          |
| 28     | Felt wiper                               | 2     | ERV56M09         | ERV80M09          |
| 29     | SHCS – wiper plate screws                | 8     | CS-CM3X0.5-016-Z | CS-CM4X0.7-016-Z  |
| 35     | Bumper screws                            | 4     | 24-312-6         | 24-312-6          |
| 36     | Carriage bumper                          | 4     | B8504-32ER       | B8504-50ER        |
| 37     | Bumper t-slot screws                     | 4     | 24-320-6         | CS-CM8X1.25-030-Z |
| 38     | Bumper block                             | 4     | ERV56M06         | ERV80M06          |
| 39     | Drop In T-nut                            | 4     | 20-099           | 20-056            |
| 40     | Linear wiper seal                        | 2     | ERV56M08         | ERV56M08          |
| 41     | Drive shaft key                          | 1     | B8534M2-08       | B8534M5-14        |
| 42     | Inline coupler                           | 1     | RGSM140802       | RGSM191405        |
| 43     | Inline coupler bolt                      | 1     | CS-CM3x0.5-012   | CS-CM6x1.0-016    |



## Offer Of Sale

The items described in this document are hereby offered for sale at prices to be established by Parker Hannifin Corporation, its subsidiaries and its authorized distributors. This offer and its acceptance by any customer ("Buyer") shall be governed by all of the following Terms and Conditions. Buyer's order for any item described in its document, when communicated to Parker Hannifin Corporation, its subsidiary or an authorized distributor ("Seller"] verbally or in writing, shall constitute acceptance of this offer.

**1. Terms and Conditions of Sale:** All descriptions, quotations, proposals, offers, acknowledgments, acceptances and sales of Seller's products are subject to and shall be governed exclusively by the terms and conditions stated herein. Buyer's acceptance of any offer to sell is limited to these terms and conditions. Any terms or conditions in addition to, or inconsistent with those stated herein, proposed by Buyer in any acceptance of an offer by Seller, are hereby objected to. No such additional, different or inconsistent terms and conditions shall become part of the contract between Buyer and Seller unless expressly accepted in writing by Seller. Seller's acceptance of any offer to purchase by Buyer is expressly conditional upon Buyer's assent to all the terms and conditions stated herein, including any terms in addition to, or inconsistent with those contained in Buyer's offer. Acceptance of Seller's products shall in all events constitute such assent.

**2. Payment:** Payment shall be made by Buyer net 30 days from the date of delivery of the items purchased hereunder. Any claims by Buyer for omissions or shortages in a shipment shall be waived unless Seller receives notice thereof within 30 days after Buyer's receipt of the shipment.

**3. Delivery:** Unless otherwise provided on the face hereof, delivery shall be made F.O.B. Seller's plant. Regardless of the method of delivery, however, risk of loss shall pass to Buyer upon Seller's delivery to a carrier. Any delivery dates shown are approximate only and Seller shall have no liability for any delays in delivery.

**4. Warranty:** Seller warrants that the items sold hereunder shall be free from defects in material or workmanship for a period of 365 days from the date of shipment to Buyer, or 2,000 hours of use, whichever expires first. THIS WARRANTY COMPRISES THE SOLE AND ENTIRE WARRANTY PERTAINING TO ITEMS PROVIDED HEREUNDER. SELLER MAKES NO OTHER WARRANTY, GUARANTEE, OR REPRESENTATION OF ANY KIND WHATSOEVER. ALL OTHER WARRANTIES, INCLUDING BUT NOT LIMITED TO, MERCHANTABILITY AND FITNESS FOR PURPOSE, WHETHER EXPRESS, IMPLIED, OR ARISING BY OPERATION OF LAW, TRADE USAGE, OR COURSE OF DEALING ARE HEREBY DISCLAIMED. NOTWITHSTANDING THE FOREGOING, THERE ARE NO WARRANTIES WHATSOEVER ON ITEMS BUILT OR ACQUIRED WHOLLY OR PARTIALLY, TO BUYER'S DESIGNS OR SPECIFICATIONS.

**5. Limitation Of Remedy:** SELLER'S LIABILITY ARISING FROM OR IN ANY WAY CONNECTED WITH THE ITEMS SOLD OR THIS CONTRACT SHALL BE LIMITED EXCLUSIVELY TO REPAIR OR REPLACEMENT OF THE ITEMS SOLD OR REFUND OF THE PURCHASE PRICE PAID BY BUYER, AT SELLER'S SOLE OPTION. IN NO EVENT SHALL SELLER BE LIABLE FOR ANY INCIDENTAL,

CONSEQUENTIAL OR SPECIAL DAMAGES OF ANY KIND OR NATURE WHATSOEVER, INCLUDING BUT NOT LIMITED TO LOST PROFITS ARISING FROM OR IN ANY WAY CONNECTED WITH THIS AGREEMENT OR ITEMS SOLD HEREUNDER, WHETHER ALLEGED TO ARISE FROM BREACH OF CONTRACT, EXPRESS OR IMPLIED WARRANTY, OR IN TORT, INCLUDING WITHOUT LIMITATION, NEGLIGENCE, FAILURE TO WARN OR STRICT LIABILITY.

**6. Changes, Reschedules and Cancellations:** Buyer may request to modify the designs or specifications for the items sold hereunder as well as the quantities and delivery dates thereof, or may request to cancel all or part of this order, however, no such requested modification or cancellation shall become part of the contract between Buyer and Seller unless accepted by Seller in a written amendment to this Agreement. Acceptance of any such requested modification or cancellation shall be at Seller's discretion, and shall be upon such terms and conditions as Seller may require.

**7. Special Tooling:** A tooling charge may be imposed for any special tooling, including without limitation, dies, fixtures, molds and patterns, acquired to manufacture items sold pursuant to this contract. Such special tooling shall be and remain Seller's property notwithstanding payment of any charges by Buyer. In no event will Buyer acquire any interest in apparatus belonging to Seller which is utilized in the manufacture of the items sold hereunder, even if such apparatus has been specially converted or adapted for such manufacture and notwithstanding any charges paid by Buyer. Unless otherwise agreed, Seller shall have the right to alter, discard or otherwise dispose of any special tooling or other property in its sole discretion at any time.

**8. Buyer's Property:** Any designs, tools, patterns, materials, drawings, confidential information or equipment furnished by Buyer or any other items which become Buyer's property, may be considered obsolete and may be destroyed by Seller after two (2) consecutive years have elapsed without Buyer placing an order for the items which are manufactured using such property. Seller shall not be responsible for any loss or damage to such property while it is in Seller's possession or control.

**9. Taxes:** Unless otherwise indicated on the face hereof, all prices and charges are exclusive of excise, sales, use, property, occupational or like taxes which may be imposed by any taxing authority upon the manufacture, sale or delivery of the items sold hereunder. If any such taxes must be paid by Seller or if Seller is liable for the collection of such tax, the amount thereof shall be in addition to the amounts for the items sold. Buyer agrees to pay all such taxes or to reimburse Seller therefore upon receipt of its invoice. If Buyer claims exemption from any sales, use or other tax imposed by any taxing authority, Buyer shall save Seller harmless from and against any such tax, together with any interest or penalties thereon



which may be assessed if the items are held to be taxable.

**10. Indemnity For Infringement of Intellectual Property Rights:** Seller shall have no liability for infringement of any patents, trademarks, copyrights, trade dress, trade secrets or similar rights except as provided in this Part 10. Seller will defend and indemnify Buyer against allegations of infringement of U.S. patents, U.S. trademarks, copyrights, trade dress and trade secrets (hereinafter 'Intellectual Property Rights'). Seller will defend at its expense and will pay the cost of any settlement or damages awarded in an action brought against Buyer based on an allegation that an item sold pursuant to this contract infringes the Intellectual Property Rights of a third party. Seller's obligation to defend and indemnify Buyer is contingent on Buyer notifying Seller within ten (10) days after Buyer becomes aware of such allegations of infringement, and Seller having sole control over the defense of any allegations or actions including all negotiations for settlement or compromise. If an item sold hereunder is subject to a claim that it infringes the Intellectual Property Rights of a third party, Seller may, at its sole expense and option, procure for Buyer the right to continue using said item, replace or modify said item so as to make it non infringing, or offer to accept return of said item and return the purchase price less a reasonable allowance for depreciation. Notwithstanding the foregoing, Seller shall have no liability for claims of infringement based on information provided by Buyer, or directed to items delivered hereunder for which the designs are specified in whole or part by Buyer, or infringements resulting from the modification, combination or use in a system of any item sold hereunder. The foregoing provisions of this Part 10 shall constitute Seller's sole and

exclusive liability and Buyer's sole and exclusive remedy for infringement of Intellectual Property Rights.

If a claim is based on information provided by Buyer or if the design for an item delivered hereunder is specified in whole or in part by Buyer, Buyer shall defend and indemnify Seller for all costs, expenses or judgments resulting from any claim that such item infringes any patent, trademark, copyright, trade dress, trade secret or any similar right.

**11. Force Majeure:** Seller does not assume the risk of and shall not be liable for delay or failure to perform any of Seller's obligations by reason of circumstances beyond the reasonable control of Seller (hereinafter 'events of Force Majeure'). Events of Force Majeure shall include without limitation, accidents, acts of God, strikes or labor disputes, acts, laws, rules or regulations of any government or government agency, fires, floods, delays or failures in delivery of carriers or suppliers, shortages of materials and any other cause beyond Seller's control.

**12. Entire Agreement/Governing Law:** The terms and conditions set forth herein, together with any amendments, modifications and any different terms or conditions expressly accepted by Seller in writing, shall constitute the entire Agreement concerning the items sold, and there are no oral or other representations or agreements which pertain thereto. This Agreement shall be governed in all respects by the law of the State of Ohio. No actions arising out of the sale of the items sold hereunder or this Agreement may be brought by either party more than two (2) years after the cause of action accrues.





Parker Hannifin Corporation  
Actuator Division  
135 Quadral Drive  
Wadsworth, Ohio 44281 USA  
Tel: (330) 336-3511  
Fax: (330) 334-3335  
Web Site:  
<http://www.parker.com/automation>