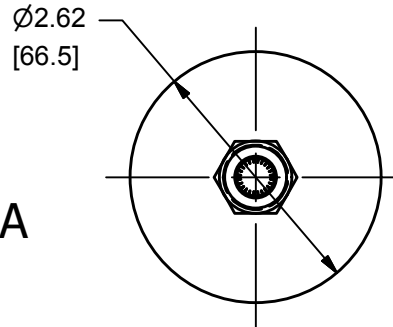
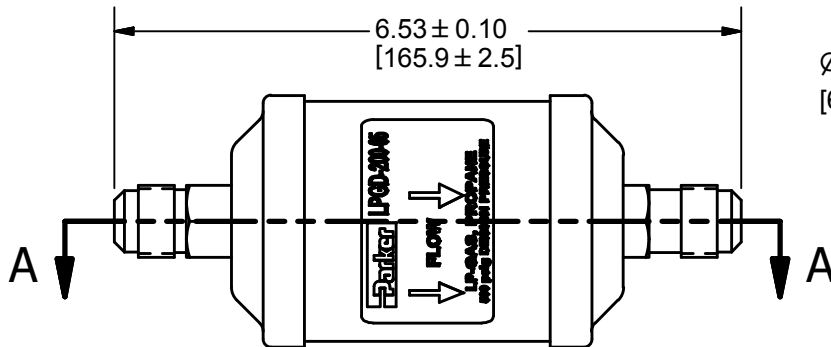
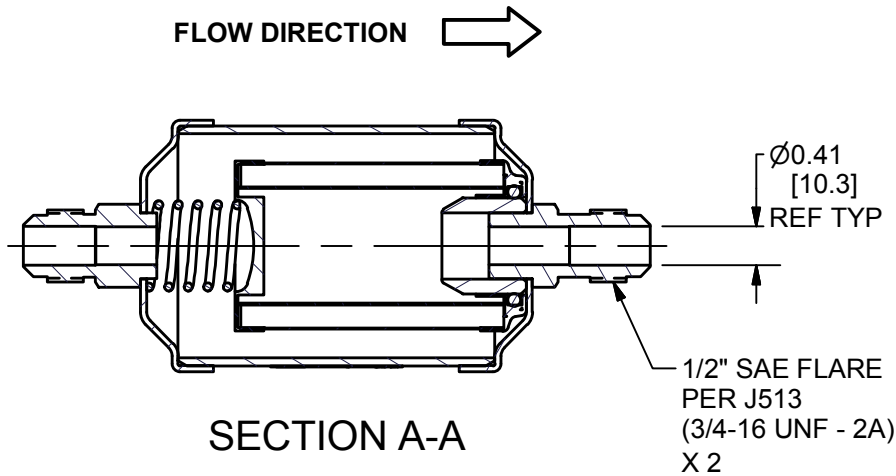


ALL DIMENSIONS ARE FOR REFERENCE ONLY. OBTAIN A CERTIFIED DRAWING FROM THE FACTORY PRIOR TO USING DIMENSIONS FOR DESIGN PURPOSES.

REV	ECO	DATE
-	0027525	9/4/2012

SPECIFICATIONS:

PART NUMBER: **LPGD-200-05**
 REPLACEMENT ELEMENT: **N/A**
 SUMP VOLUME: **N/A**
 PORT CONFIGURATION: **1/2" SAE FLARE (3/4-16 UNF-2A) PORTS**
 MAXIMUM OPERATING PRESSURE: **500 PSIG**
 MINIMUM BURST PRESSURE: **2500 PSIG**
 MAXIMUM OPERATING TEMPERATURE: **250°F**
 MAXIMUM DIFFERENTIAL AT REPLACEMENT: **10 PSID**
 FLOW DIRECTION: **OUT-TO-IN**
 RATED FLOW: **4 GPM, 3.6 PSID / 10 GPM, 8.9 PSID**
 ABSOLUTE EFFICIENCY RATING: **5µM**
 MOUNTING: **ANY**
 ASSEMBLY WEIGHT: **APPROXIMATELY 1.4 LBS**
 MATERIALS OF CONSTRUCTION:
 BODY: **PAINTED* CARBON STEEL, COPPER, NICKEL-PLATED** CARBON STEEL,**
 ELEMENT: **GLASS, POLYESTER, GLASS-FILLED NYLON, EPOXY, FLUOROCARBON**



* PAINT SPEC: BLACK, 500 HOURS MINIMUM SALT SPRAY RESISTANCE PER ASTM B117.

**NICKEL PLATED: 0.0001 INCHES MIN. THICKNESS

FINITE AIRTEK FILTRATION DIVISION		DR BY	DNH	DATE	1/27/2012	DRAWING No.	LPGD-200-05-300	SIZE	A
		TITLE	SPECIFICATION DRAWING	CHK BY					