

Wiper AH Profile

Catalog EPS 5370/USA

AH Profile, Premium Double-Lip Canned Wiper



Parker's AH profile is the ultimate metal-clad excluder for heavy duty hydraulic applications. Press-fit installation prevents O.D. contamination while the additional sealing lip works in conjunction with Parker rod seals to provide redundant sealing for leakage reduction. An aggressive wiping lip, facing the environment, ensures the utmost performance in contaminant exclusion along the rod.

IMPORTANT: When using the AH wiper in conjunction with other rod seals, it is important to select a rod seal profile that enables pressure relief of fluid into the system, otherwise a pressure trap may form between the wiper and rod seal. Suggested rod profiles are the BT, BS, and B3 u-cups.

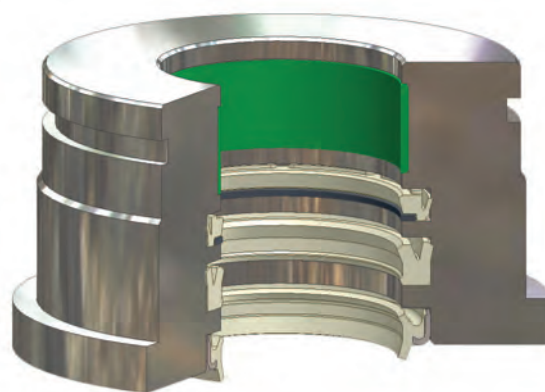
Technical Data

Standard Materials*	Temperature Range	Surface Speed
P4300A90	-65°F to 275°F (-54°C to 135°C)	<1.6 ft/s (0.5 m/s)
P4700A90	-65° to 200°F (-54°C to 93°C)	<1.6 ft/s (0.5 m/s)
P4615A90	-65°F to 200°F (-54°C to 93°C)	<1.6 ft/s (0.5 m/s)

***Alternate Materials:** For applications that may require an alternate material, please contact your local Parker Seal representative.



AH Cross-Section

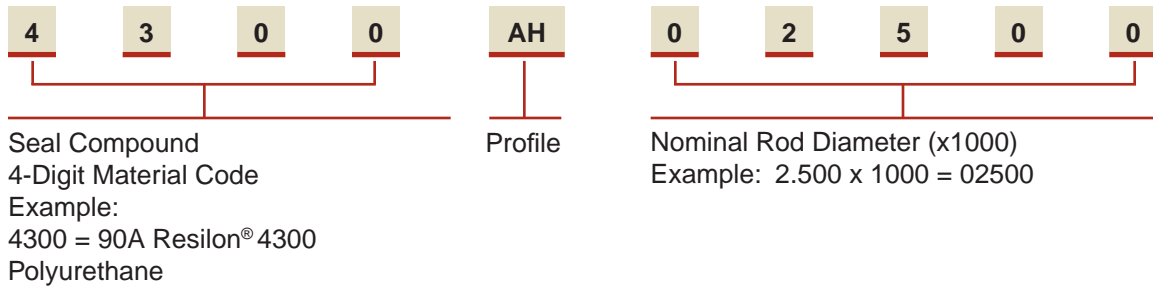


AH installed in Rod Gland

AH Profile

Part Number Nomenclature — AH Profile

Table 8-9. AH Profile — Inch



Gland Dimensions — AH Profile

AH gland dimensions are provided in Table 8-11 on page 8-18.

Wiper J Profile

Catalog EPS 5370/USA



J Profile, Performance Canned Wiper

The press-fit installation of Parker's J wiper guards against O.D. contamination and results in simple counter-bore groove machining. The wiping lip on the J wiper is very aggressive, eliminating the ingestion of dust, mud and moisture from harsh work areas. J wipers are ideal for medium and heavy duty hydraulic cylinders in the most demanding applications.

Technical Data

Standard Materials*	Temperature Range	Surface Speed
P4300A90	-65°F to 275°F (-54°C to 135°C)	<1.6 ft/s (0.5 m/s)
P4700A90	-65° to 200°F (-54°C to 93°C)	<1.6 ft/s (0.5 m/s)
P4615A90	-65°F to 200°F (-54°C to 93°C)	<1.6 ft/s (0.5 m/s)

***Alternate Materials:** For applications that may require an alternate material, please contact your local Parker Seal representative.

Part Number Nomenclature — J Profile

Table 8-10. J Profile — Inch

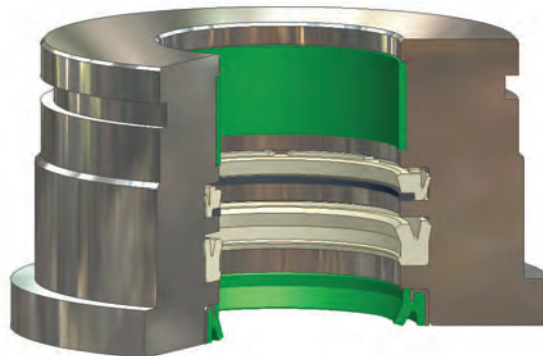
4	7	0	0	J	0	3	0	0	0
└──────────┘				└──┘	└──────────┘				
Seal Compound				Profile	Nominal Rod Diameter (x1000)				
4-Digit Material Code					Example: 3.00 x 1000 = 03000				
Example:									
4700 = Polyurethane									



J Cross-Section

Gland Dimensions — J Profile

J gland dimensions are provided in Table 8-11 on page 8-18.



J installed in Rod Gland

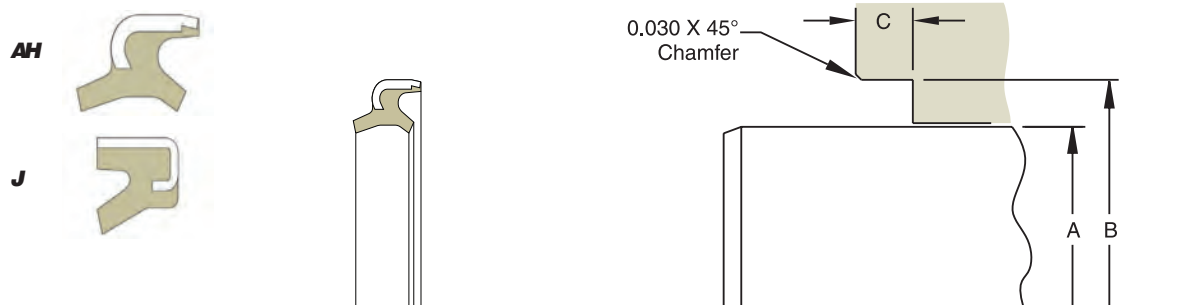
8

04/01/12

Wiper AH and J Gland Dimensions

Catalog EPS 5370/USA

Gland Dimensions — AH and J Profiles



Please refer to Engineering Section 2, page 2-8 for surface finish and additional hardware considerations.

Table 8-11. AH and J Gland Dimensions — Inch

A Rod Diameter	B Groove Diameter	C Groove Width	Profile Code*		Part Number		
			AH	J	Compound Code	Profile Code	Rod Size
+0.000/-0.002	+0.001/-0.001	+0.015/-0.000					
0.500	1.000	0.250		x	XXXX	xx	00500
0.625	1.125	0.312	x	x	XXXX	xx	00625
0.750	1.250	0.312	x	x	XXXX	xx	00750
0.875	1.375	0.312	x	x	XXXX	xx	00875
1.000	1.500	0.312	x	x	XXXX	xx	01000
1.125	1.625	0.312	x	x	XXXX	xx	01125
1.250	1.750	0.312	x	x	XXXX	xx	01250
1.375	1.875	0.312	x	x	XXXX	xx	01375
1.500	2.000	0.312	x	x	XXXX	xx	01500
1.625	2.125	0.312	x	x	XXXX	xx	01625
1.750	2.250	0.312	x	x	XXXX	xx	01750
1.875	2.375	0.312	x	x	XXXX	xx	01875
2.000	2.500	0.312	x	x	XXXX	xx	02000
+0.000/-0.003	+0.001/-0.001	+0.015/-0.000					
2.125	2.625	0.312	x	x	XXXX	xx	02125
2.250	2.750	0.312	x	x	XXXX	xx	02250
2.375	2.875	0.312		x	XXXX	xx	02375
2.500	3.000	0.312	x	x	XXXX	xx	02500
2.625	3.125	0.312		x	XXXX	xx	02625
2.750	3.250	0.312	x	x	XXXX	xx	02750
2.875	3.375	0.312			XXXX	xx	02875
3.000	3.500	0.312	x	x	XXXX	xx	03000

*X = Standard Offering
For custom groove calculations, see Appendix C.

A Rod Diameter	B Groove Diameter	C Groove Width	Profile Code*		Part Number		
			AH	J	Compound Code	Profile Code	Rod Size
+0.000/-0.003	+0.001/-0.001	+0.015/-0.000					
3.250	3.875	0.312		x	XXXX	xx	03250
3.500	4.125	0.312		x	XXXX	xx	03500
3.750	4.375	0.312		x	XXXX	xx	03750
4.000	4.625	0.312	x	x	XXXX	xx	04000
4.250	4.875	0.312		x	XXXX	xx	04250
4.500	5.125	0.312		x	XXXX	xx	04500
4.750	5.375	0.312			XXXX	xx	04750
5.000	5.625	0.312		x	XXXX	xx	05000
5.250	5.875	0.312			XXXX	xx	05250
5.500	6.125	0.375		x	XXXX	xx	05500
5.750	6.375	0.375			XXXX	xx	05750
6.000	6.625	0.375			XXXX	xx	06000
+0.000/-0.004	+0.001/-0.001	+0.015/-0.015					
6.250	6.875	0.375			XXXX	xx	06250
6.500	7.125	0.375			XXXX	xx	06500
6.750	7.375	0.375			XXXX	xx	06750
7.000	7.625	0.375			XXXX	xx	07000
7.250	7.875	0.375			XXXX	xx	07250
7.500	8.125	0.375			XXXX	xx	07500
7.750	8.375	0.375			XXXX	xx	07750
8.000	8.625	0.375			XXXX	xx	08000

*X = Standard Offering
For custom groove calculations, see Appendix C.

NOTE: For sizes larger than those shown in the table, please contact your local Parker Seal representative.

09/01/07