

TS8015 HMI

New addition to TS8000 series features
TFT display and more communication ports

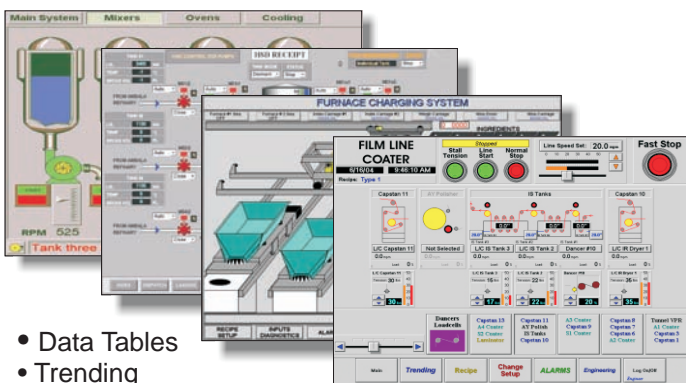
The TS8015 is a web-enabled graphic operator station with on-board communications support for over 30 popular PLC drivers. It provides direct communications with all SSD Drive products, and comes with Ethernet port and the capability for remote monitoring and control. The TS8015 offers some outstanding features that are normally found only on PC-based units, but at a fraction of the cost.

Other High-end Touchpanel and SCADA systems may come with only a very basic configuration software tool, requiring you to purchase or license a costly graphic design tool programming package, often with rates linked to the number of tags used. TS8000 includes DSI8000, a powerful graphic design and configuration software tool, complete with PRE-ENGINEERED TEMPLATES that make HMI design a snap! This flexible and powerful software uses icon-based configuration, display, control, and data logging tools to take full advantage of the TS8000 series architecture.

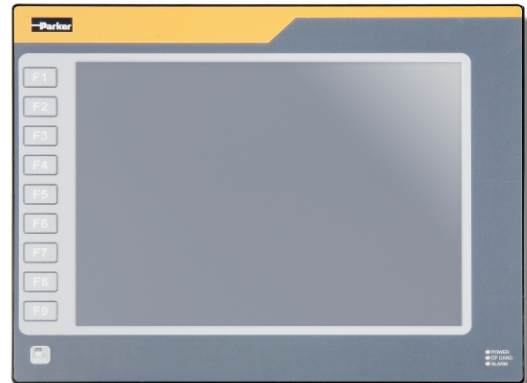
With the Built-in Web Server, you can quickly create detailed Web pages with manufacturing data, provide remote access and control of the HMI unit, and monitor your production process real-time.

The TS8015 augments the TS8000 series, which also includes 10", 8", 6", and 3.5" units, all using the same software package, and with many similar features.

Ready-Made Application Templates speed HMI design



- Data Tables
- Trending
- Histograms
- Alarm Logs
- Machine Graphics
- Production Charts



PRODUCT FEATURES

- Four communications ports (2 RS-232 and 2 RS-422/485 on board)
- 10 base-T/100 base-TX ethernet port supports multiple protocols simultaneously
- Built-in web server and ftp server/client
- USB port to download the unit's configuration from a PC or for data transfers to a PC
- Configuration is stored in non-volatile memory (32 mbyte flash)
- CompactFlash® socket for database/recipe storage and data logging
- 15-inch tft active matrix 32k color XGA 1024 x 768 pixel LCD
- 10-button keypad for on-screen menus
- Three front panel LED indicators
- Powered by 24 vdc $\pm 20\%$ supply
- Resistive analog touchscreen

Communications Protocols provided:

SSD Drives – AC, DC, Servo and LINK
Allen Bradley - DF1, DH485
Alstom – ALSPA, GEM80
Festo – FPC, IPC, FEC Series
General Electric – SNP, SRTP
IDEC – Micro 3 Series
Klockner Moeller – PS4-201
Matsushita – FP Series
Mitsubishi – A/Q/FX Series
Modicon – Modbus RTU/ASCII, TCP
Omron – C Series, FINS Master
PLC Direct – DirectNet, K Seq
Siemens – S7 MPI, PPI
Telemechanique – Uni-Telway
... & others!

All above are registered trademarks of respective companies



ENGINEERING YOUR SUCCESS.

TS8015 Specifications

1. POWER REQUIREMENTS: Must use Class 2 or SELV rated power supply. Power connection via removable three position terminal block. Supply Voltage: +24 VDC $\pm 20\%$
Typical Power 27 W (Typical power with +24 VDC, RS232/485 communications, Ethernet communications, CompactFlash card installed, and display at full brightness.)
Maximum Power 67 W

Notes:

The circuit common is not connected to the enclosure of the unit. See operator's manual for additional power supply information.

2. BATTERY: Lithium coin cell. Typical lifetime of 10 years.

3. LCD DISPLAY:

SIZE: 15-inch

TYPE: TFT

COLORS: 32K

PIXELS: 1024 X 768

BRIGHTNESS: 600 cd/m²

BACKLIGHT: *50,000 HR TYP. (at room temperature)

4. 10-KEY KEYPAD: for on-screen menus.

5. TOUCHSCREEN: Resistive analog

6. MEMORY: On Board

User Memory: 32 Mbyte of non-volatile Flash memory.

Memory Card: CompactFlash Type II slot for Type I and Type II CompactFlash cards.

7. COMMUNICATIONS: USB Device Port: Adheres to USB 2.0 Specification supporting high speed and full speed via Type B connection.

Serial Ports: Format and Baud Rates for each port are individually software programmable up to 115,200 baud.

PGM Port: RS232 port via RJ12.

COMMS Ports: RS422/485 port via RJ45, and RS232 port via RJ12.

DH485 TXEN: Transmit enable; open collector, VOH = 15 VDC, VOL = 0.5 V @ 25 mA max.

Port to port isolation: 500 Vrms for 1 minute signal isolation : 50V

Ethernet Port: 10 BASE-T/ 100 BASE-TX RJ45 jack is wired as a NIC (Network Interface Card). Isolation from Ethernet network to TS8015 operator interface: 1500 Vrms

8. ENVIRONMENTAL CONDITIONS:

Operating Temperature Range: 0 to 50°C

Storage Temperature Range: -20 to 70°C

Operating and Storage Humidity: 80% maximum relative humidity (non-condensing) from 0 to 50°C.

Altitude: Up to 2000 meters.

9. CERTIFICATIONS AND COMPLIANCES:

SAFETY

IEC 61010-1, EN 61010-1: Safety requirements for electrical equipment for measurement, control, and laboratory use, Part 1.

IP66 Enclosure rating (Face only), IEC 529

Type 4X Enclosure rating (Face only), UL50

ELECTROMAGNETIC COMPATIBILITY

Emissions and Immunity to EN 61326: Electrical Equipment for Measurement, Control and Laboratory use.

Immunity to Industrial Locations:

Electrostatic discharge EN 61000-4-2 - Criterion A - 8 kV air discharge, 4 kV contact discharge

Electromagnetic RF fields EN 61000-4-3 - Criterion B - 10 V/m

Fast transients (burst) EN 61000-4-4 - Criterion B - 2 kV power, 1 kV signal

Surge EN 61000-4-5 - Criterion A - 1 kV L-L, 2 kV L-N-E power RF conducted interference EN 61000-4-6 - Criterion B - 3 V/rms

Emissions:

Emissions EN 55011 - Class A

Notes: 1. Criterion A: Normal operation within specified limits.

2. Criterion B: Temporary loss of performance from which the unit self recovers.

10. CONNECTIONS: Compression cage-clamp terminal block.

Wire Gauge: 12-22 AWG copper wire

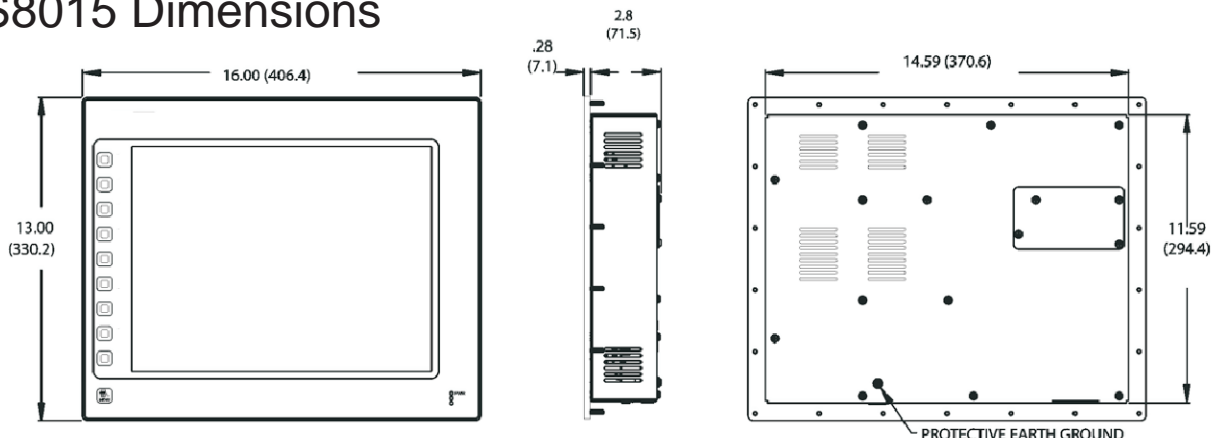
Torque: 5-7 inch-pounds (56-79 N-cm)

11. CONSTRUCTION: Steel rear metal enclosure with NEMA 4X/IP66 aluminum front plate for indoor use only when correctly fitted with the gasket provided. Installation Category II, Pollution Degree 2.

12. MOUNTING REQUIREMENTS: Maximum panel thickness is 0.25" (6.3mm). For NEMA 4X/IP66 sealing, a steel panel with a minimum thickness of 0.125" (3.17 mm) is recommended. Maximum Mounting Stud Torque: 17 inch-pounds (1.92 N-m)

13. WEIGHT: 11.41 lbs (5.17 Kg)

TS8015 Dimensions



Parker Hannifin Corporation

SSD Drives Division

9225 Forsyth Park Dr.

Charlotte, NC 28273

Tel: 704 588-3246

Fax: 704 588-3249

info.us.ssd@parker.com

www.ssddrives.com www.parker.com

TS8015 Flyer - HA471894