

Snap-tite NGV1 Fueling Receptacle



Snap-tite's receptacle is designed for permanent mounting to a natural gas vehicle (CNG).

Snap-tite's receptacle utilizes the NGV1 Profile which allows complete interchangeability to any nozzle conforming to the NGV1 standard.

Features

- ▶ Superior poppet check valve design:
 - a) Polyurethane crimped seal to eliminate erosion and washout
 - b) Non-barrel type poppet to reduce sticking due to contamination and icing between the outside diameter of the valve and the inside diameter of the body bore
 - c) Self-centering capability of the poppet
- ▶ One-piece receptacle design
- ▶ High strength 316 Stainless Steel valve stop to provide a positive stop for the valve
- ▶ Superior flow characteristics
- ▶ Available in either 316 Stainless Steel

Certification: ANSI/AGA/CGA NGV1

Working Pressure: 3000 psi (207 bar) and
3600 psi (248 bar)

Burst Pressure:

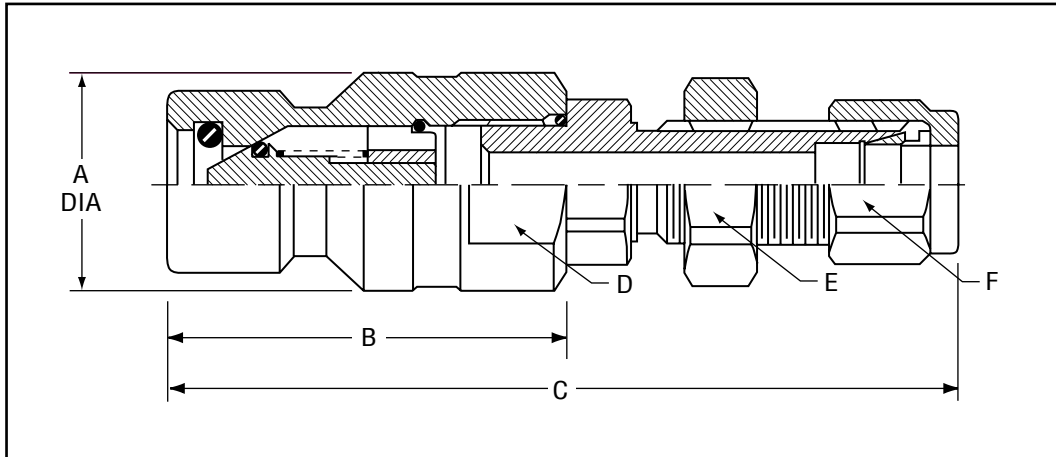
Stainless Steel: 25,000 psi (1724 bar)

Temperature Range: -40°F (-40°C) to 250°F (121°C)

Weight: .21 lbs (.095 kgs)

Flow Rate: 2090 SCFM (3551 Nm³/hr)

Material: 316 Stainless Steel



PART NUMBER	A	B	C	D FLATS	E HEX	F HEX
NGVN2-P30	.984 (25)	1.78 (45.20)		13/16 (20.60)		
NGVN2-P36	.945 (24)	1.78 (45.20)		13/16 (20.60)		
NGVN3-P30	.984 (25)	1.78 (45.20)	3.40 (86.40)	13/16 (20.60)	11/16 (17.50)	9/16 (14.30)
NGVN3-P36	.945 (24)	1.78 (45.20)	3.40 (86.40)	13/16 (20.60)	11/16 (17.50)	9/16 (14.30)
NGVN4-P30	.984 (25)	1.78 (45.20)	3.53 (89.70)	13/16 (20.60)	3/4 (19.10)	11/16 (17.50)
NGVN4-P36	.945 (24)	1.78 (45.20)	3.53 (89.70)	13/16 (20.60)	3/4 (19.10)	11/16 (17.50)

See Page 16 (How to Order)

in (mm)