

Snap-tite Compressed Natural Gas (CNG) Check Valves



Snap-tite's Check Valve is designed specifically for zero leakage control of compressed natural gas (CNG). Free flow in one direction and blocked flow in the reverse.

This Check Valve utilizes the same internal construction and parts as the Snap-tite NGV1 Receptacle.

Features

- ▶ Superior poppet check valve design:
 - a) Polyurethane crimped seal to eliminate erosion and washout
 - b) Non-barrel type poppet to reduce sticking due to contamination and icing between the outside diameter of the valve and the inside diameter of the body bore
 - c) Self-centering capability of the poppet
- ▶ One-piece body design
- ▶ High strength 316 Stainless Steel valve stop to provide a positive stop for the valve
- ▶ Superior flow characteristics
- ▶ 316 Stainless Steel construction

Certification: AGA 7-93

Working Pressure: 3600 psi (248 bar)

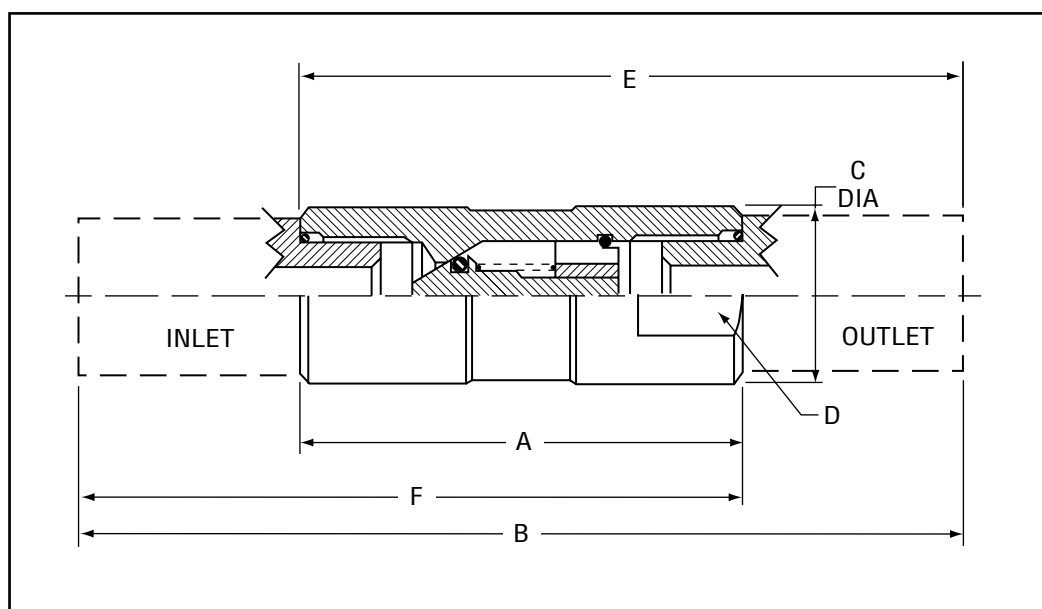
Burst Pressure: 25,000 psi (1724 bar)

Temperature Range: -40°F (-40°C) to 250°F (121°C)

Weight: .235 lbs (0.107 kgs)

Flow Rate: 2090 SCFM (3551 Nm³/hr)

Material: 316 Stainless Steel



PART NUMBER	A	B	C	D FLATS	E	F
NGCV6EF-EF	2.14 (54.40)		.86 (21.80)	3/4 (19.10)		
NGCV4A-4A	2.14 (54.40)	4.14 (105.20)	.86 (21.80)	3/4 (19.10)		
NGCV6A-6A	2.14 (54.40)	4.29 (108.10)	.86 (21.80)	3/4 (19.10)		
NGCV6EF-4A	2.14 (54.40)		.86 (21.80)	3/4 (19.10)	3.14 (79.80)	
NGCV6EF-6A	2.14 (54.40)		.86 (21.80)	3/4 (19.10)	3.22 (81.80)	
NGCV6MOS-EF	2.14 (54.40)		.86 (21.80)	3/4 (19.10)		2.81 (71.40)

See Page 16 (How to Order)

in (mm)