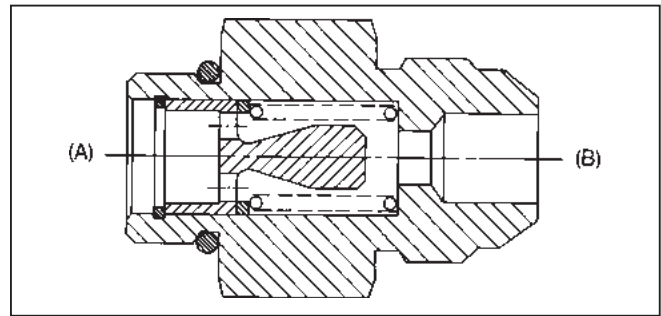
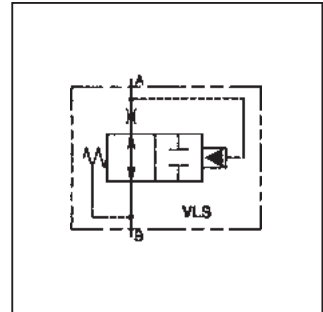


General Description

Series VLS velocity check valves protect your hydraulic system in the event of line rupture. These valves return to the open position once the pressure is equalized.

Series VLS valve is a flow sensing, hydraulic check. Flow will pass through the check until the designated closing flow is reached. Then the check will close, stopping further flow.



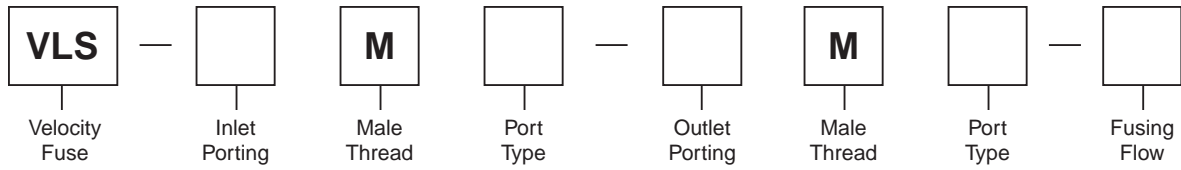
Features

- Up to 207 Bar (3,000 PSI),
 0.01 to 23.8 LPM (0.5 to 90 GPM)

Specifications

Maximum Operating Pressure	207 Bar (3000 PSI)	Operating Temperature	Under normal conditions of continuous operation, fluid temperature should not exceed -82°C (180° F). In no instance should the temperature exceed 93°C (200°F).
Normal Closing Flow	To be based on a nominal 3.5 Bar (50 PSI) with 150 SUS oil		
Leakage After Closing	10 DPM maximum	Torque Required for Installation	See chart
Reverse Flow	Not to exceed 150% of specified closing flow	Material	All steel
Fluid Recommended	Premium grade hydraulic fluid with viscosity of 10cSt (60 SUS) to 216 cSt (1000 SUS) at operating temperature.	Seals	Nitrile standard. For other seal compounds, consult factory
		Mounting	Not restricted

C



Code	Size
50	1/2" NPTF
06	SAE -6
08	SAE -8
10	SAE -10
12	SAE -12

Code	Type
1	NPTF
2	SAE

Code	Size
50	1/2" NPTF
06	SAE -6
08	SAE -8
10	SAE -10
12	SAE -12

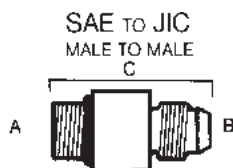
Code	Type
1	NPTF
2	SAE
3	JIC
4	ORS

Code	Flow*
0.8	3.0 LPM (0.8 GPM)
1.5	5.7 LPM (1.5 GPM)
2.0	7.6 LPM (2.0 GPM)
3.0	11.4 LPM (3.0 GPM)
6.0	22.7 LPM (6.0 GPM)
7.0	26.5 LPM (7.0 GPM)
10	37.9 LPM (10 GPM)
22	83.3 LPM (22 GPM)

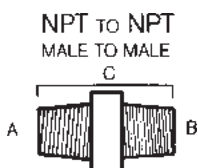
VLS Flow Chart	
Max Flow	Models
26.5 LPM (7 GPM)	06M2-06M3
37.9 LPM (10 GPM)	08M2-08M3 10M2-08M4
45.4 LPM (12 GPM)	10M2-10M3
56.8 LPM (15 GPM)	50M1-50M1
90.8 LPM (24 GPM)	12M2-12M3

C

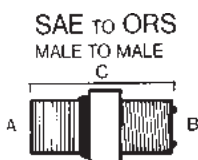
Inch equivalents for millimeter dimensions are shown in (**)



A (In.)	B (In.)	C		Hex		Part Number	Recommended Installation Torque* (In Lb. Ft.)	
		(In.)	(mm)	(In.)	(mm)		In Aluminum	In Steel
3/8	3/8	1.30	(33.0)	11/16	(17.5)	VLS-06M2-06M3-**	85-100	13-16
1/2	1/2	2.25	(57.2)	7/8	(22.2)	VLS-08M2-08M3-**	15-20	25-33
5/8	5/8	2.06	(52.3)	1	(25.4)	VLS-10M2-10M3-**	25-30	42-50
3/4	3/4	1.97	(50.0)	1 1/4	(31.8)	VLS-12M2-12M3-**	35-40	55-65



A (In.)	B (In.)	C		Hex		Part Number	Recommended Installation Torque* (In Lb. Ft.)	
		(In.)	(mm)	(In.)	(mm)		In Aluminum	In Steel
1/2	1/2	1.90	(48.4)	7/8	(22.2)	VLS-50M1-50M1-**	55-60	85-90



A (In.)	B (In.)	C		Hex		Part Number	Recommended Installation Torque* (In Lb. Ft.)	
		(In.)	(mm)	(In.)	(mm)		In Aluminum	In Steel
3/8	3/8	1.25	(31.8)	3/4	(19.1)	VLS-06M2-06M4-**	85-100	13-16
5/8	1/2	2.10	(53.3)	1	(25.4)	VLS-10M2-08M4-**	25-30	42-50