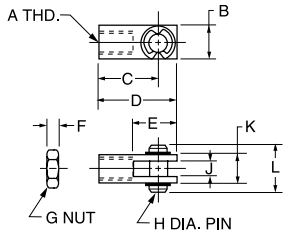


Piston Rod Clevis

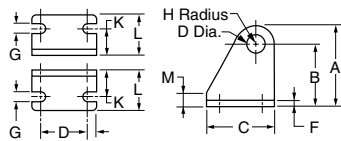
Assembly includes pin and
(2) Retainer Rings
and (1) Jam Nut.



Part Number	Bore	A	B	C	D	E	F	G	H	J	K	L
L071300025	5/16	#5-40	.31	.44	.56	.38	.11	#5-40	.12	.13	.31	.50
L071300100 L077130100*	7/16, 9/16	#10-32	.38	.75	.94	.56	.12	#10-32	.19	.19	.38	.56
L071300200 L077130200*	3/4, 7/8	1/4-28	.50	.94	1.19	.68	.16	1/4-28	.25	.25	.50	.69
L071300300 L077130300*	1-1/16	5/16-24	.50	.94	1.19	.68	.19	5/16-24	.25	.25	.50	.69
L071300400 L077130400*	1-1/4, 1-1/2	7/16-20	.75	1.31	1.69	.94	.25	7/16-20	.38	.38	.75	1.03
L071300500 L077130500*	1-3/4, 2, 2-1/2	1/2-20	.75	1.31	1.69	.94	.31	1/2-20	.38	.38	.75	1.03
L071300600	3	5/8-18	1.00	2.25	2.75	1.50	.38	5/8-18	.50	.50	1.00	1.38

* Stainless Steel for use with SRD/SRDM cylinders.

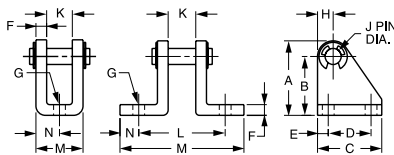
Pivot Brackets



Part Number	Bore	A	B	C	D	E	F	G	H	J	K	L	M
L071310100	7/16	.76	.56	.75	.50	.12	.06	.19	.20	.160	.28	.50	.12
L071310200	3/4, 7/8, 1-1/16	1.19	.88	1.12	.75	.19	.12	.27	.31	.255	.44	.81	.25
L071310300	1-1/2	1.75	1.38	1.50	1.00	.25	.12	.27	.38	.380	.62	1.00	.25

Pivot Bracket Assembly

Assembly includes pin and
(2) Retainer Rings.



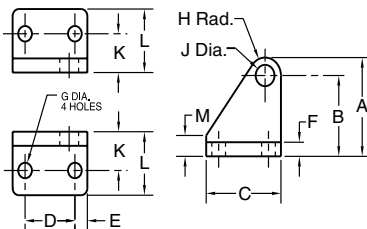
5/16" Bore Only

Part Number	Bore	A	B	C	D	E	F	G	H	J	K	L	M	N
L071320025	5/16	.53	.40	.62	.38	.12	.04	.16	.12	.12	.26	—	.36	.18
L071320100 L077150100*	7/16, 9/16	.76	.56	.75	.50	.12	.06	.19	.19	.156	.34	.91	1.34	.22
L071320200 L077150200*	3/4, 7/8, 1-1/16	1.18	.88	1.12	.75	.19	.12	.27	.30	.250	.38	1.25	2.00	.38
L071320300	1-1/4	1.18	.88	1.12	.75	.19	.12	.27	.30	.250	.50	1.38	2.14	.38
L071320400 L077150400*	1-1/2, 1-3/4	1.75	1.38	1.50	1.00	.25	.25	.27	.37	.375	.62	2.00	2.88	.44
L071320500 L077150500*	2, 2-1/2	1.75	1.38	1.50	1.00	.25	.25	.27	.37	.375	.75	2.12	3.00	.44
L071320600	3	2.25	1.75	1.75	1.25	.25	.25	.27	.50	.50	.88	2.62	3.88	.62

* Stainless Steel for use with SRD/SRDM cylinders.

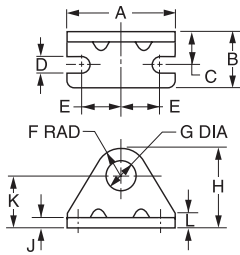
SR Series Trunnion Brackets

Select brackets for SR Series Trunnion Mount Cylinders from the table below.
(Note: Trunnion Brackets are ordered as a separate item from the cylinder.)



Part Number	Bore Sizes	A	B	C	D	E	F	G	H	J	K	L	M
L076600100	7/16	1.75	1.38	1.50	1	.25	.25	.27	.38	.375	.69	1.12	.37
L076600200	3/4, 1-1/16, 1-1/2	1.75	1.38	1.50	1	.25	.25	.27	.38	.500	.69	1.12	.37

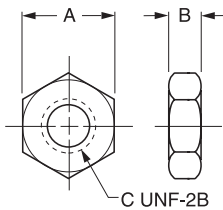
Foot Brackets



Part Number	Bore	A	B	C	D	E	F	G	H	J	K	L
L073790016	5/16	1.00	.37	.25	.13	.37	.31	.25	.75	.06	.44	.12
L073790023	5/16	1.00	.37	.25	.13	.37	.31	.38	.75	.06	.44	.12
L073790024	7/16	1.38	.62	.31	.19	.50	.31	.38	.88	.07	.56	.12
L073790028 L077160028*	7/16, 9/16	1.38	.62	.38	.19	.50	.38	.44	.94	.09	.56	.12
L073790032	3/4	1.62	.75	.44	.19	.62	.41	.50	1.09	.10	.69	.19
L073790040 L077160040*	3/4, 7/8, 1-1/16	1.88	1.00	.56	.27	.75	.56	.63	1.38	.12	.81	.25
L073790048 L077160048*	1-1/4, 1-1/2	2.50	1.50	.75	.27	.94	.75	.75	1.75	.12	1.00	.38
L073790102	1-3/4	3.00	1.50	.87	.35	1.12	.91	1.03	2.16	.19	1.25	.50
L073790124 L077160124*	2	3.12	1.62	1.00	.34	1.12	1.00	1.38	2.50	.25	1.50	.62
L073790132	2-1/2	3.75	1.62	1.00	.35	1.44	1.25	1.51	3.00	.25	1.75	.75
L073790140	3	4.37	1.62	1.00	.35	1.75	1.25	1.64	3.14	.25	1.89	.89

* Stainless Steel for use with SRD/SRDM cylinders.

Mounting Nut



Part Number	Bore	A	B	C
L073800200	5/16	.44	.16	1/4-28
L073800400	5/16, 7/16	.56	.22	3/8-24
L073800500 L077170500*	7/16, 9/16	.69	.25	7/16-20
L073800600	3/4	.75	.31	1/2-20
L073800800 L077170800*	3/4, 7/8, 1-1/16	.94	.38	5/8-18
L073800900 L077170900*	1-1/4, 1-1/2	1.12	.42	3/4-16
L073801100	1-3/4	1.50	.55	1-14
L073801200 L077171200*	2	1.88	.50	1-1/4-12
L073801400	2-1/2	2.06	.78	1-3/8-12
L073801500	3	2.25	.84	1-1/2-12

* Stainless Steel for use with SRD/SRDM cylinders.

D