

**Specifications for SPM25 Series**

SPM25 Features Include:

- Tandem motor with valving to provide two-speed operation on constant input flow
- Journal bearings for long life and good over-hung load capability
- Buna-N Seals are standards for petroleum and glycol based fluids “Viton®E” seals are optional.
- Pressure balanced plates for greater efficiency.

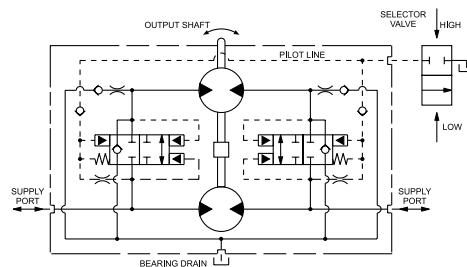


Description .....	Two-Speed Gear Motors
Flow Range .....	To 134 GPM (507.2 LTR) per Section
Displacements .....	To 15.50 CIR. (240 CC's/REV.) per Section
Maximum Pressure to .....	2500 PSI (172 BAR)
Maximum Speed to .....	2000 RPM
Rotation .....	Bi-Directional
Bearings .....	Journal
Construction .....	Aluminum

**Tandem Motor With Valving To Provide Two-Speed Operation On Constant Input Flow**

Parker two-speed motors consist of two hydraulic motor units and pilot-operated valving. From this unique unit either high-speed or high torque can be obtained, thereby improving the efficiency of winch drives, track drives, and hydrostatic transmissions. Main features of these units are: no external pilot pressure source is necessary, shifting to different speed is extremely smooth; the motor will not hesitate during shift. Displacement of the two motors need not be equal. It utilizes one inlet and one outlet, and is fully reversible.

The two, motor sections are connected through valving to the common inlet/outlet ports. For low-speed, high-torque output, the pilot port is vented to tank. For higher speed, lower torque, the pilot port is blocked, causing the internal valves to shift to the closed position, routing the total flow through the rear motor section. The front motor section receives lubrication oil through the valve section, and requires very little horsepower in this position, since it is only recirculating the fluid.



**Performance Data Per Section**

MOTOR MODELS	DISPLACEMENT/REVOLUTION(THEORETICAL)					TORQUE PER 1000 PSID*				POWER AT MAX.		MAXIMUM LIMITS				
	US GALLONS	CUBIC INCHES	LITERS	CUBIC CM'S	IMPERIAL GALLONS	START		RUN		RPM/MAX.PSID*		RELIEF SETTING		CONTINUOUS		
						LB.IN.	NM	LB.IN.	NM	H.P.	KW	PSI	BAR	PSI	BAR	RPM
SPM25500	.0435	10.04	.165	164.52	.036	1400	1898	1600	2169	122	91.0	2500	172	1700	117	2000
SPM25550	.0479	11.06	.181	181.24	.040	1760	2386	1960	2657	146	109.0	2500	172	1700	117	2000
SPM25660	.0581	13.42	.220	219.91	.048	1820	2467	2200	2982	168	125.3	2500	172	1700	117	2000
SPM25770	.0671	15.50	.254	254.00	.056	2295	3111	2818	3820	187	139.4	2500	172	1700	117	2000

All data based on SAE 10W oil at 135°F. Available with Viton® Seals.  
 \*Average values from performance curves.

**CAUTION:** Bearing drain line must not exceed 20 PSIG.

MOUNTING DIMENSIONS		
MOTOR SIZES	FOR 'C' 2-BOLT & 'C' 4-BOLT	
	A	B
SPM25500-500	270.2 (10.64)	451.1 (17.76)
SPM25500-550	270.2 (10.64)	455.6 (17.94)
SPM25500-660	270.2 (10.64)	465.0 (18.31)
SPM25500-770	270.2 (10.64)	482.0 (18.98)
SPM25550-500	274.8 (10.82)	455.6 (17.94)
SPM25550-550	274.8 (10.82)	460.2 (18.12)
SPM25550-660	274.8 (10.82)	469.6 (18.49)
SPM25550-770	274.8 (10.82)	486.6 (19.16)
SPM25660-500	285.4 (11.24)	466.3 (18.36)
SPM25660-550	285.4 (11.24)	470.9 (18.54)
SPM25660-660	285.4 (11.24)	480.3 (18.91)
SPM25660-770	285.4 (11.24)	497.3 (19.58)
SPM25770-500	294.8 (11.61)	475.7 (18.73)
SPM25770-550	294.8 (11.61)	480.3 (18.91)
SPM25770-660	294.8 (11.61)	489.7 (19.28)
SPM25770-770	294.8 (11.61)	506.7 (19.95)

SAE 4-Bolt NPT Connectors are available. See Accessory Section

MOUNTING DIMENSIONS					
SIZE	C	D	E	F	G
2"	84 (21.3)	42.8 (1.688)	38.8 (1.53)	77.7 (3.062)	1/2-13NC

Inch equivalents for millimeter dimensions are shown in (\*\*).

