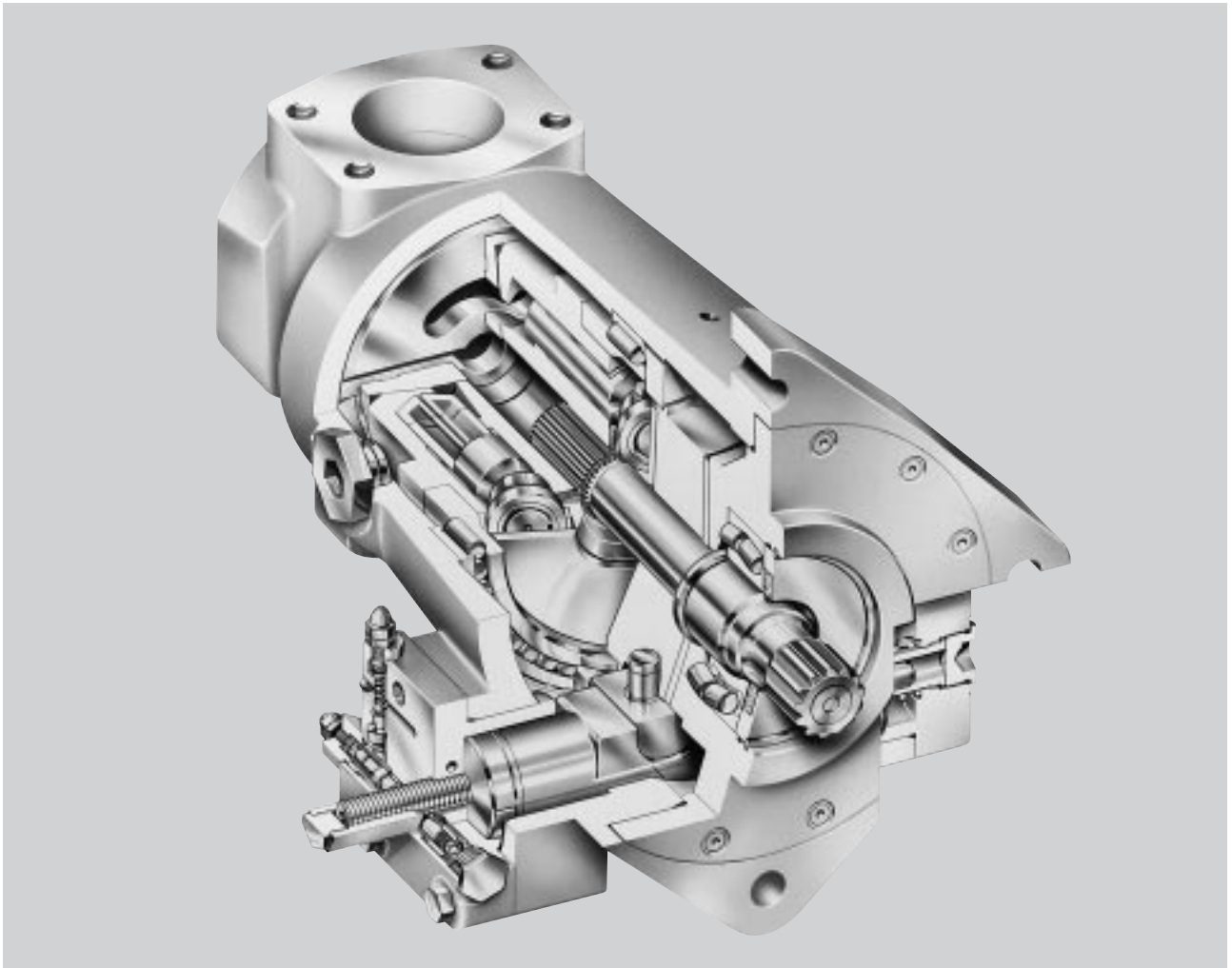


DENISON HYDRAULICS
Premier Series
open loop pump controls
series P080

service information



Publ. S1-AM027

DENISON | **Hydraulics**

Internet: <http://www.denisonhydraulics.com> E-mail: denison@denisonhydraulics.com

www.comoso.com

	PAGE
typical characteristics-----	3
fluid connections-----	3
introduction-----	4
general-----	4
description-----	4
pressure compensator-----	4
remote compensator control-----	4
load sensing control-----	4
torque limiter-----	4
rotary servo control-----	4
hydraulic stroker-----	4
electric stroker-----	5
pressure compensator override and torque limiter override-----	5
troubleshooting chart-----	5
pressure compensator parts list-----	6
figure 1 & parts list, maximum volume stop-----	7
figure 2 & parts list, maximum volume handwheel-----	7
compensator disassembly, assembly, test-----	8
figure 3 & parts list, compensator cap-----	9
buck-up cap disassembly, assembly-----	10
figure 4 & parts list, buck-up cap-----	10
electric stroker parts list-----	11
electric stroker disassembly, assembly, test-----	12
figure 5, electric stroker-----	13
figure 6, servo cap-----	13
parts lists for figure 5 and figure 6-----	14
control cap disassembly, assembly-----	15
figure 7 & parts list, control cap-----	15
torque limiter override disassembly & assembly-----	16
figure 8 & parts list, torque limiter override-----	17
figure 9 & parts list, torque limiter override cap-----	18
torque limiter override test and adjustment-----	19
compensator override disassembly, assembly, test-----	20
figure 10 & parts list, compensator override-----	21
hydraulic stroker parts list-----	22
hydraulic stroker disassembly, assembly, test-----	23
figure 11 & parts list, hydraulic stroker-----	24
torque limiter parts list-----	25
torque limiter disassembly & assembly-----	26
figure 12, torque limiter-----	27
figure 13, torque limiter cap-----	27
parts lists for figure 12 and figure 13-----	28
torque limiter test and adjustment-----	29
rotary servo parts list-----	30
rotary servo disassembly, assembly, test-----	31
figure 14 & parts list, rotary servo-----	32
load sensing control parts list-----	33
load sensing control disassembly, assembly, test-----	34
figure 15 & parts list, load sensing control-----	35
hydraulic circuits-----	36
pressure compensator-----	36
pressure compensator with load sensing configuration-----	36
torque limiter-----	36
manual rotary servo-----	37
manual rotary servo with compensator override-----	37
manual rotary servo with torque limiter override-----	37
electric stroker-----	38
electric stroker with compensator override-----	38
electric stroker with torque limiter override-----	38
hydraulic stroker-----	39
hydraulic stroker with compensator override-----	39
hydraulic stroker with torque limiter override-----	39
load sensing control-----	40
stroker performance-----	40
installation drawings-----	41
controls key sheet-----	45
technical data conversions-----	46

Pump seal kit (includes all controls) S22-15647 See key sheet pg. 45 for information

TYPICAL CHARACTERISTICS

Specification	Term	P080
• compensator response off-stroke on-stroke (per SAE J745 Apr. 87 at 345 bar)	sec. sec.	0,060 0,110*
• compensator adjustment	bar/turn	138
• minimum compensating pressure (comp, load sensing, torque limiter)	bar	13,8**
• minimum servo pressure for 500 bar system pressure	bar	48,3**
• minimum compensator override pressure at 48,3 bar servo pr. (servo, elec. & hyd. str.)	bar	84,5**
• torque limiter adjustment range code J code K	Nm Nm	90 - 170 over 170
• typ. servo & stoker response @ 83 bar servo pressure, zero to full stroke and vice versa	sec.	<0,35
• servo flow required for this response (E, H, R10 controls)	l/min.	11,4
• servo flow required for this response (-1J, -1K, *1P controls)	l/min	15,2
• maximum servo pressure	bar	103
• servo shaft rotation, 0 to full volume	degrees	56
• displacement/rev./degree servo shaft rotation	cc/rev/deg.	1,43
• torque to turn rotary servo shaft	Nm	2,3
• hydraulic stoker control pressure 0 disp. full disp.	bar bar	3,45 14,5
• electric stoker control amps (24V) 0 disp. full disp.	mA mA	125 290
• electric stoker control amps (12V) 0 disp. full disp.	mA mA	250 580
pulse width modulation frequency: Denison Hydraulics electric stoker accessories mating connector: Din 43650 type AF part no. 167-10008-8 (provided) Jupiter driver S20-14078 Jupiter power supply S20-11715 Options card S20-II716 Venus controller 020-14103	Hz	100-150
• electric stoker nominal coil resistance (24v. coil)	ohms	41
• electric stoker nominal coil resistance (12v. coil)	ohms	10
• handwheel turns, full to zero stroke	turns	9
• torque to turn handwheel @ 70 bar	Nm	9
• torque to turn handwheel @ 500 bar	Nm	20

FLUID CONNECTIONS

• port C1, C2 (cylinder gage ports)	BSPP	1/4
• port E (electric stoker control pressure inlet)	BSPP	1/4
• port H (hydraulic stoker control pressure inlet)	BSPP	1/4
• port LS (load sensing port)	BSPP	1/4
• port V (compensator vent)	BSPP	3/8
• port X (rotary servo, electric & hydraulic stoker servo inlet)	BSPP	3/8

NOTES

*on-stroke response for compensator override is determined by servo/stoker response.

**add case pressure

GENERAL

The instructions contained in this manual cover complete disassembly and reassembly of the controls. Before proceeding with the disassembly or reassembly of any unit, this manual should be studied in order to become familiar with proper order and parts nomenclature.

DESCRIPTION OF OPERATION

A piloted three-way valve spool and sleeve combination is the nucleus of the control function. For the compensator, torque limiter and load sensing controls, system pressure is applied to the input port of the valve, and to one end of the spool. A small orifice feeds this pressure to the other end of the spool. A spring on this end biases the spool to normally port the control piston to pump case. This control piston links to the pump cam. On the opposite side of the control piston, a spring and a piston connected to system pressure along with pump timing forces, combine to put the pump on stroke.

PRESSURE COMPENSATOR

A spring-loaded cone and seat connected to the spring end of the three-way spool establishes an adjustable pressure limit on this end of the spool. When system pressure reaches this value, flow through the spool creates a pressure difference across the spool. At approximately 13,8 bar difference, the spool shifts toward the spring, re-directing the control cylinder port to pressure. This pressure applied to the control piston overcomes the forces putting the pump on stroke, causing the pump to reduce displacement. When the pump pressure drops, the spool shifts the other way to maintain the pump pressure at approximately 13,8 bar above the controlled pressure on the spring side. The spring end of this three-way spool may also be connected to a remote pressure control, through the vent port, V. Flow through this port, when controlling, is approximately 1,9 l/m.

PRESSURE COMPENSATOR LOAD SENSING CONFIGURATION

For load sensing, this "V" port is connected to the load. The valve between the pump and the load meters the flow. The pump provides the flow to develop 13,8 bar drop across the valve independent of the load pressure and thus establishes a constant flow independent of operating pressure. Adjustment of spring load on the three-way spool allows precise control of the differential pressure.

LOAD SENSING CONTROL

Where the approximately 1,9 l/m vent flow is unacceptable, and where multiple loads are to be controlled, a load sensing control is available. In the load sensing control, the vent flow is modulated by a valve which senses load pressure and establishes the pump compensator pressure at 21 bar above load pressure. There is essentially no flow in the sensing line.

TORQUE LIMITER

For constant torque, system pressure and pump displacement are interrelated by the formula $P \cdot V = C$. As pressure increases, displacement must reduce, and vice versa.

A linkage to the pump control piston slides a spool over a pin. The pin contains a cross drilled hole, and a connecting drilling to one end. This pin passes through a bore in the torque limiter housing connecting to the vent port of the compensator. The pressure in the vent port applies a force on the pin, which is resisted on the other end by a two spring combination.

The pin positions itself to where the vent pressure force on the one end is balanced by the spring force on the other end. When the cross drilled hole opens, it causes the three-way spool to shift to direct system pressure into the control piston, reducing stroke. The linkage to the control piston causes the spool to move in the direction to close the cross-drilled hole. Thus, for every position of the pin, there is a corresponding position for the control piston. The position of the pin is determined by the pressure, the spring rate, and the initial adjustment on the springs. As pressure increases, pump stroke must reduce.

At low pressure, only the outer spring contacts the spool. As pressure increases, the second spring also makes contact. Thus the rate of change of pressure starts at a low initial rate when the pump is at full stroke and changes to a high rate at reduced stroke, to approximate the $P \cdot V = C$ relationship. The normal compensator function is retained to provide a maximum pressure limit.

ROTARY SERVO CONTROL

The rotary servo control is mounted on the off-stroke side of the control piston. The control piston has a large diameter on this side, and a smaller diameter on the opposite side. Servo pressure is connected to the input port on the three-way valve, and also to the smaller diameter side of the control piston.

When the three-way spool is at rest, this end of the control piston is ported to tank, and servo pressure applied to the opposite, smaller diameter piston causes the rocker cam to stroke to minimum. When the three-way spool shifts, pressure is directed into the larger diameter of the control piston causing the cam to shift towards full stroke.

The pin as described for the torque limiter, is spring loaded against a mechanism which converts rotary motion of the input shaft to linear motion of the pin, thus positioning pump stroke proportionately to input shaft rotation.

HYDRAULIC STROKER

In the hydraulic stroker, a spring loaded piston is attached to this pin. A control pressure of 3,45 bar causes the piston to commence to move against the spring, to position the pin in proportion to the control pressure, and thus cause the pump to stroke in proportion to control pressure. Full stroke is achieved at 14,5 bar control pressure.

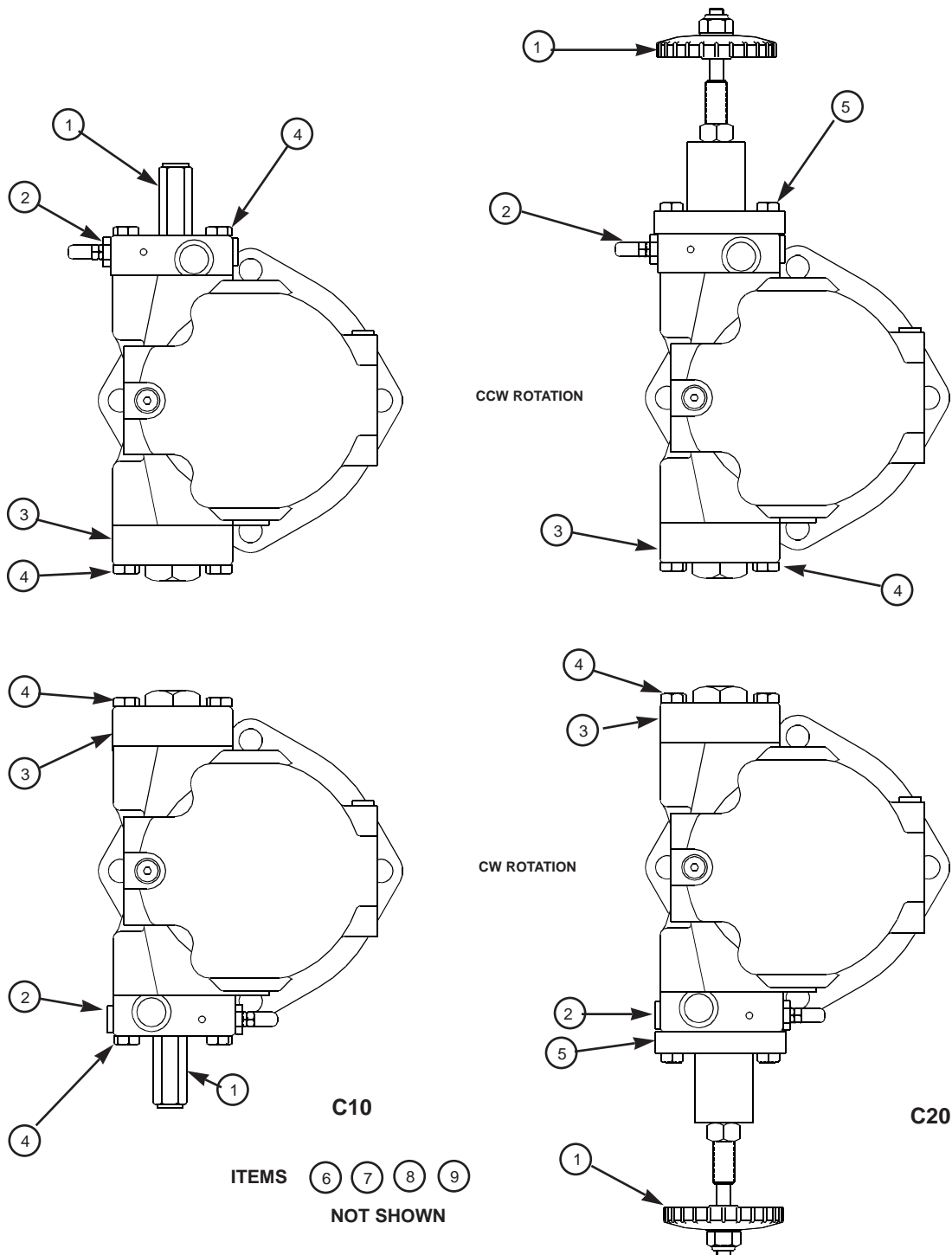
ELECTRIC STROKER

By mounting an electrically modulated pressure control valve on the hydraulic stroker to establish the control pressure, pump stroke is controlled by an electrical signal. At approximately 125 mA electrical signal, the pump commences to stroke, and at approximately 290 mA, the pump will be at full stroke. The Denison Hydraulics Venus controller 020-14103, Jupiter S20-14078, or Jupiter S20-14087 may be used to drive the electric stroker.

PRESSURE COMPENSATOR AND TORQUE LIMITER OVERRIDE

An override pressure compensator or torque limiter control is mounted on the on-stroke side of the control piston opposite the servo, hydraulic or electric stroker. The port on the override control which normally connects to cylinder in the at-rest position is connected to servo, allowing normal stroker control. When system pressure or torque exceed the override setting, system pressure is supplied to the smaller diameter control piston to override the command and reduce stroke to the compensator or torque limiter setting.

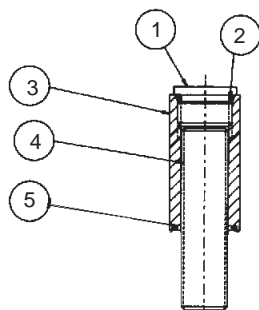
TROUBLESHOOTING CHART		
Effect of Trouble	Possible Cause	Fault Which Needs Remedy
Compensator, Compensator Override		
Low system pressure	Compensator malfunction	Dirt in spool orifice Damaged cone or seat Broken differential spring Improperly adjusted differential spring
Failure to compensate	Differential adjustment	Differential set too high
Sluggish response	Differential adjustment	Differential set too low
Wide pressure fluctuations (hunting)	Excessive line capacitance	Install check valve near pump outlet
Load Sensing Control		
Low system pressure	See above	
Failure to compensate	See above	
Sluggish response	Differential adjustment Modulating valve	Differential set too high Air in load sensing line
Wide pressure fluctuations (hunting)	Excessive line capacitance Modulating valve	Install check valve near pump outlet Air in load sensing line
Excessive pressure drop across control valve	Differential adjustment	Differential set too high
Poor control of flow	Differential adjustment	Differential set too low
Torque Limiter, Torque Limiter Override		
Torque setting erratic	Torque limiter cap malfunction	Sticking pin
Torque incorrect at high flows	Incorrect torque setting	Outer adjustment screw
Torque incorrect at low flows	Incorrect torque setting	Inner adjustment screw
Too much torque variation	Wrong torque limiter for range	Replace inner/outer springs with correct springs
Low system pressure	Compensator malfunction	Dirt in spool orifice Damaged cone or seat Broken differential spring Improperly adjusted differential spring
Failure to compensate	Differential adjustment	Differential set too high
Sluggish response	Differential adjustment	Differential set too low
Wide pressure fluctuations (hunting)	Excessive line capacitance	Install check valve near pump outlet
Rotary Servo		
Failure to stroke	Differential adjustment	Differential set too low
Goes to full	Differential adjustment	Differential set too high
Sluggish response	Low servo pressure	Check servo pressure
Strokes in steps	Servo cap malfunction	Sticking pin Wear on linkages or input cam surface
Hydraulic Stroker		
Failure to stroke	Differential adjustment	Differential set too low
Goes to full	Differential adjustment	Differential set too high
Strokes in steps	Servo cap malfunction	Wear on linkages, Sticking stroker piston
Electric Stroker		
Failure to stroke	Differential adjustment	Differential set too low
Goes to full	Differential adjustment	Differential set too high
Excessive hysteresis	Electric proportional valve	Change dither on electrical signal
No response	Electric proportional valve	Faulty wiring, Filter screen plugged
Strokes in steps	Servo cap malfunction	Wear on linkages Sticking stroker piston
Instability	Air in control	Bleed air from control Check for air in servo supply
General		
Cannot achieve full volume	Maximum volume stop	Back out max. volume stop
Cannot achieve zero volume	Minimum volume stop	Back out min. volume stop
Noise	Air in system	Aerated reservoir Leaky inlet line Trapped air in system



PRESSURE COMPENSATOR
parts list

ITEM	DESCRIPTION	P080	QTY.	
		PART NO.	C10	C20
1	Max. Vol. Stop (Fig. 1)	S22-15467	1	—
	Max Vol. Handwheel (Fig. 2)	S22-15448	—	1
*2	Compensator Control (Fig. 3)	S22-15623	1	—
	Compensator Control	S22-15633	—	1
3	Buck Up Cap (Fig. 4)	S22-15447	1	1
4	Screw-H.H.C., M12 x 55 mm	363-12205	8	6
5	Screw-H.H.C., M12 x 75 mm	363-12220	—	2
6	Control Piston	032-91836	1	1
7	O-Ring, 70 S-1 ARP 013	671-00013	2	2
8	O-Ring, 70 S-1 ARP 151	671-00151	2	2
9	Piston Ring	032-91816	2	2

*includes items 1, 4, 5



**FIGURE 1
MAXIMUM VOLUME STOP**

PARTS LIST FOR FIGURE 1, MAX. VOL. STOP S22-15467

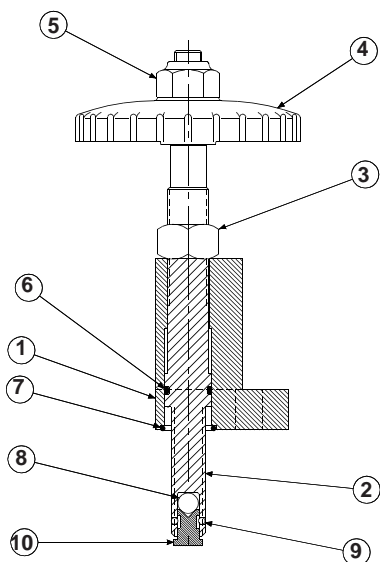
ITEM	DESCRIPTION	PART NO.	QTY.
1	Plug 8HP5N-S	488-35018	1
2	O-Ring, 90 S-1 ARP 908	691-00908	1
3	Nut, M16 Hex	032-91822	1
4	Screw, Soc. Set	311-50001	1
5	O-Ring, 70 S-1 ARP 115	671-00115	1

**MAXIMUM VOLUME HANDWHEEL
DISASSEMBLY**

1. See Fig. 2. Remove the two screws holding the bracket (1) to the control cap.
2. Turn the handwheel counter-clockwise to remove the stop screw from the control cap.
3. Remove nut (5) and handwheel (4) from the stop screw (2).
4. Remove nut (3). Screw (2) may now be slipped through the bracket (1) to examine parts and to replace O-ring (6).
5. Seat (10) rotates and pivots on ball (8), and is retained by pressing two balls (9) into screw (2). Replace assembly if damaged.

ASSEMBLY

1. Install ball (8) and seat (10) in screw (2).
2. Press balls (9) into screw (2) to retain seat.
3. Install O-ring (6) on screw (2). Lubricate O-ring and slide screw into bracket (1). Install remaining parts.
4. Turn handwheel clockwise into cap till the screw contacts the control piston.
5. Install and torque the assembly screws to 102 N.m.



**FIGURE 2
HANDWHEEL MAXIMUM
VOLUME STOP**

PARTS LIST FOR FIGURE 2, HANDWHEEL S22-15448

ITEM	DESCRIPTION	PART NO.	QTY.
1	Bracket	032-92056	1
2	Screw	032-92057	1
3	Nut, Hex 3/4-16 UNC	333-25000	1
4	Handwheel	031-59911	1
5	Nut, Elastic Stop 1/2-13	331-20100	1
6	O-Ring, 90 S-1 ARP 115	691-00115	1
7	O-Ring, 90 S-1 ARP-118	691-00118	1
8	Ball	201-12001	1
9	Ball	201-04001	2
10	Seat	032-92058	1

COMPENSATOR DISASSEMBLY

1. **See Figure 3.** Back off max. volume screw or handwheel to full displacement. Remove max. volume screw or handwheel assembly.
2. Remove bolts holding cap to pump.
3. Remove plug (15) and attached parts. Remove spring (11) and spool (18).
4. Remove adjusting plug (2) and attached parts. Remove seal piston (5). Note: a 10-24 screw may be used to assist in pulling the piston. Remove spring (7) and cone (8).
5. Do not remove sleeve in body (1). Sleeve is pressed into cap and finished to size. If sleeve or cap is worn, replace the cap-sleeve assembly (1).
6. Examine seat (10) for wear. Do not remove unless damaged.

ASSEMBLY

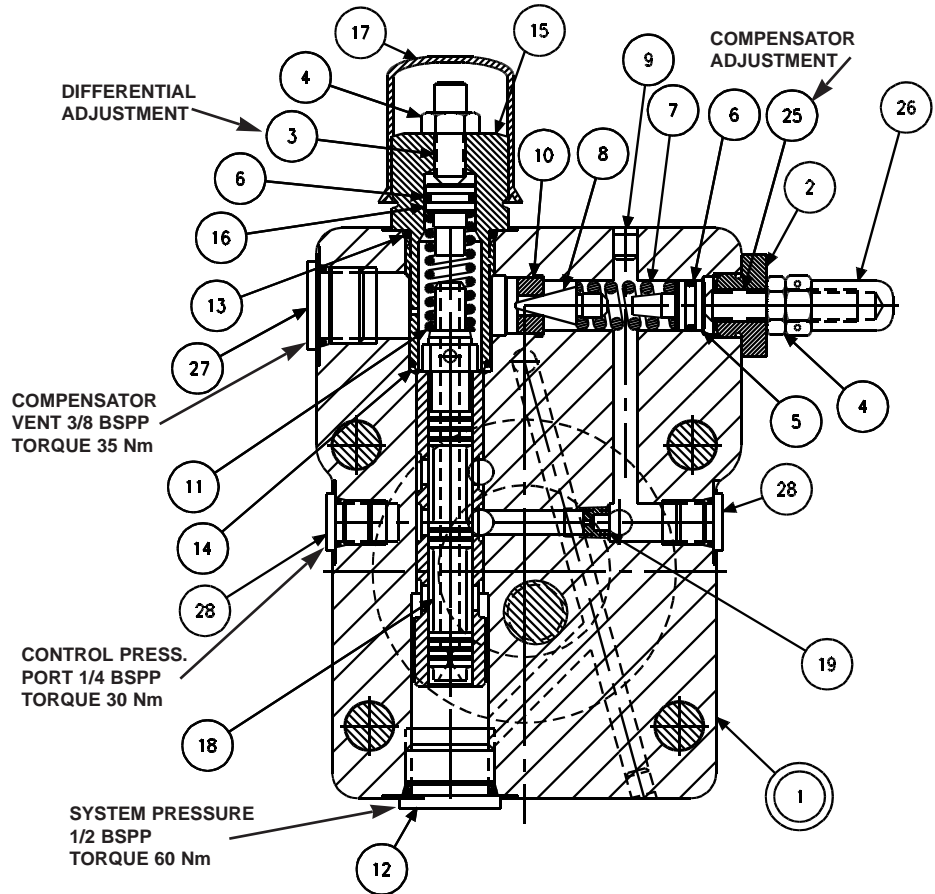
1. Install Avseal plugs (9) and orifice (19) in body.
2. Press seat (10) into bore squarely against shoulder in bore.
3. Install O-ring (14) in bottom of bore as shown. Install spool (18) into bore as shown. Install spring (11) over end of spool. Install O-ring (6) on seal piston (16). Lubricate and install into plug (15). Install O-ring (13) on plug (15). Install plug (15) into cap. Install screw (3) and nut (4).
4. Install O-ring (6) on seal piston (5).
5. Lubricate O-ring and install cone (8), spring (7) and seal piston into bore in cap (1), being careful that cone enters seat (10). Install remaining parts. Torque plug (12) to 60 Nm. Torque plug (27) to 35 Nm. Torque plug (28) to 30 Nm.
6. Note proper location for cap on pump. Install O-rings on interface between cap and pump control pad.
7. Install cap on pump control pad, guiding the control piston into the bore. Install maximum volume stop assembly.
8. Torque mounting bolts to 102 Nm.

COMPENSATOR TEST AND ADJUSTMENT

Compensator is to be tested on pump. Adjust maximum volume stop to full displacement by backing off stop till there is no contact with the control piston.

1. Install gages on system pressure and on compensator vent ports.
2. Turn compensator adjustment screw (25) CCW until there is no contact with spring, then adjust 1/2 turn CW after contact is made with spring.
3. Turn differential adjustment screw (3) CCW until there is no contact with spring, then adjust 1/2 turn CW after contact is made with spring.
4. System relief valve should be set at 35 bar. If testing on application, apply a load to pump.
5. Start prime mover. Pump should be at full displacement at 35 bar.
6. Increase system relief valve or load until compensator de-strokes pump to zero displacement. Set compensator to 103 bar.
7. Adjust compensator differential spool pressure to 13,8 bar. This is accomplished by adjusting the differential screw until the difference in pressure readings between the system pressure and compensator vent gages installed in the compensator cap is 13,8 bar. (It may be necessary to change differential to gain stability. Use caution when exceeding 17 bar to avoid spring going solid, preventing compensator action.)
8. Set the compensator to 207 bar, 414 bar, and 500 bar.
9. At each condition, increase the system pressure until the pump fully de-strokes. At no time should the system pressure vary more than 10,3 bar from the compensator setting. The control should be steady and stable at all conditions.
10. Reduce pressure to 10,3 bar below the compensator setting. Pump should return to full stroke. Repeat two or more times. Compensator setting should be repeatable.
11. Set compensator adjustment to the required setting, or 414 Bar if not otherwise noted. Install cap (17) on differential adjustment.

FIGURE 3
COMPENSATOR

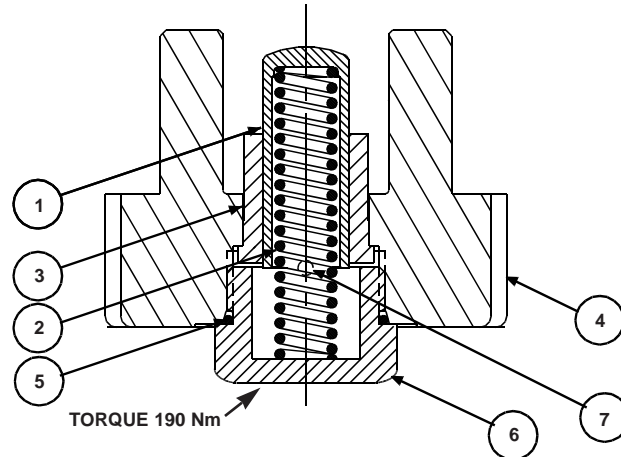


PARTS LIST FOR FIGURE 3

compensator C10, S22-15623
compensator C20, S22-15633

ITEM	DESCRIPTION	PART NO.	QTY.
1	Cap-Sleeve Assembly	S22-15604	1
2	Adj. Plug	032-91814	1
3	Soc. Setscrew 5/16-24 x 1	312-13160	1
4	Nut, 5/16-24	335-13100	2
5	Seal Piston	031-59367	1
6	O-Ring, 90 S-1 ARP 012	691-00012	2
7	Spring	032-91798	1
8	Cone	036-12288	1
9	Avseal Plug	447-00026	2
10	Seat	036-11692	1
11	Spring	033-71086	1
12	Plug, BSPP 1/2	447-01008	1
13	O-Ring, 90 S-1 ARP 910	691-00910	1
14	O-Ring, 90 S-1 ARP 017	691-00017	1
15	Plug	031-57368	1
16	Seal Piston	032-91305	1
17	Cap	449-00612	1
18	Spool	032-59482	1
19	Orifice Plug	033-25528	1
25	Soc. Setscrew 5/16-24 x 1-1/4	312-13180	1
26	Acorn Nut	036-33474	1
27	Plug, BSPP 3/8	447-00032	1
28	Plug, BSPP 1/4	447-01004	2

FIGURE 4
BUCK-UP CAP



BUCK-UP CAP DISASSEMBLY

1. See Figure 4 Set maximum volume stop to full stroke. Remove 4 screws holding cap to pump. Caution! Spring load could cause injury!
2. Remove cap assembly from pump.
3. Remove and examine spring (2) and piston (1). If sleeve (3) is worn, press it out and replace.

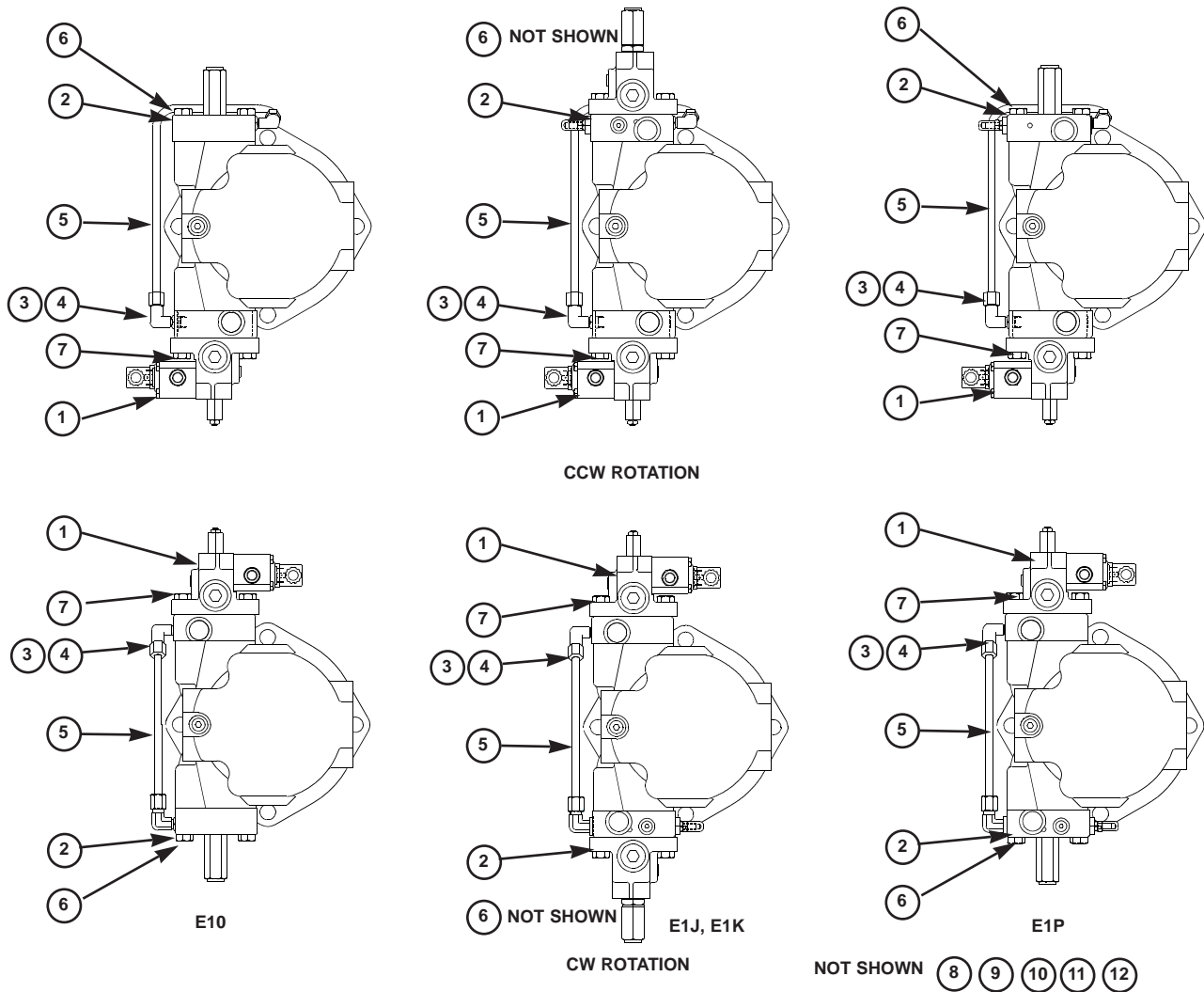
ASSEMBLY

1. Install Avseal plug (7) into cap. Press sleeve (3) into cap to shoulder. Install O-ring (5) and plug (6) into cap. Torque plug to 190 Nm. Install spring (2) and piston (1).
2. Install O-rings on interface between cap and pump control pad. Install cap assembly on pump housing as indicated on the applicable view, guiding the control piston into the bore.
3. Torque the assembly bolts to 102 Nm.

PARTS LIST FOR FIGURE 4

P080 buck-up cap S22-15447

ITEM	DESCRIPTION	P080	
		PART NO.	QTY.
1	Piston	032-92202	1
2	Spring	032-92205	1
3	Sleeve	032-92203	1
4	Control Cap	032-91832	1
5	O-Ring	691-00920	1
6	Plug	032-92204	1
7	Avseal Plug	447-00026	1



ELECTRIC STROKER

parts list

ITEM	DESCRIPTION	P080 PART NO.	QUANTITY			
			E10	E1J	E1K	E1P
1	Electric Stroker (Fig. 5)	S22-15610	1	1	1	1
2	Control Cap (Fig. 7)	S22-15613	1	—	—	—
	Low Torque Override (Fig. 8)	S22-15615	—	1	—	—
	High Torque Override	S22-15632	—	—	1	—
	Comp. Override (Fig. 10)	S22-15614	—	—	—	1
*3	O-Ring, 90 S-1 ARP 113	691-00113	2	2	2	2
*4	Elbow	494-15019	2	2	2	2
*5	Tube, CW	032-92250	1	1	1	1
	Tube, CCW	032-92251	—	—	—	—
**6	Screw-H.H.C., M12 x 55 mm	363-12205	6	4	4	6
**7	Screw-H.H.C., M12 x 75 mm	363-12220	2	4	4	2
8	Control Piston	032-91785	1	1	1	1
9	O-Ring, 70 S-1 ARP 013	671-00013	2	2	2	2
10	O-Ring, 70 S-1 ARP 151	671-00151	2	2	2	2
11	Piston Ring	032-91816	1	1	1	1
12	Piston Ring	032-91811	1	1	1	1

*Tubing assembly including items 3, 4, and 5 are available as S22-15605 (CW), S22-15606 (CCW)

**Included with items 1, 2

ELECTRIC STROKER
DISASSEMBLY

1. **See Figure 5.** Remove 3 screws (37) holding block (36) to body (16).
2. Remove 2 screws holding body (16) to cap assembly (1).
3. Remove all parts from body (16) except pin (30) and arm assembly (28). It is not necessary to remove these parts unless broken or worn. Examine parts for wear or damage.
4. Remove screw (3). Examine head for excessive wear, and body for smooth sealing surface with O-ring.
5. **See Figure 6.** Remove tube lines to cap assembly.
6. Remove screws holding cap assembly to pump body.
7. Remove cap assembly (1). Remove plug (4) with attached parts. Remove spring (11) and spool (6).
8. Do not remove sleeve in body (1). Sleeve is pressed into cap and finished to size. If sleeve or cap is worn, replace the cap-sleeve assembly (1).
9. Remove cap (19), screw (13) and nut (14). Remove the retainer (7).

ASSEMBLY

1. **See Figure 6.** Install Avseal plug (9) in cap.
2. Install spool (6) into bore as shown. Install spring (11) over end of spool.
3. Install O-ring (8) on spring retainer (7). Install retainer (7), screw (13), and nut (14) in plug (4).
4. Install O-ring (15) in bottom of bore as shown. Install O-ring (10) on plug (4). Install plugs (4) and (12) in body (1). Torque plugs to 60 N m. Install O-ring (18) in cap.
5. Turn screw (13) in until spring retainer (7) contacts spring (11). Turn an additional 1-1/2 turns and lock in position.
6. Note proper location for control on pump. Install O-rings on interface between cap and pump control pad. Install cap on pump control pad, guiding the control piston into the bore.
7. Torque two assembly bolts to 102 N m.
8. **See Figure 5.** Apply Loctite 242 on threads of screw (3), lubricate the shank, thread through the cap into the control piston, and torque to 6,78 N m.
9. Install minimum stop screw (24) and turn clockwise to stroke pump to full volume. Measure height from control cap to top of screw (3). With control piston at full stroke, dimension must be 19,2 +/- 0,76 mm. Back out minimum stop screw (24) till there is no contact with control piston.
10. Press dowel (30) into body (16), through the link (28), to 6,35 mm below surface, apply Loctite hydraulic sealant to threads of screws (46) and install over dowel (30).
11. Press spool (21) into retainer (19). Caution: do not use excessive force. Place spool/retainer assembly into spool (17) with spring (18) and washer (34). Secure with retaining ring (33).
12. While sleeve (27) is engaged into dowel on link (28), slide above spool assembly into bore of body (16), and through sleeve (27). Spool (21) must move freely and easily at all positions of the link (28).
13. Install proportional valve (41) in block. Torque to 27 N m.
14. Install coil on proportional valve. Torque to 2,2-2,8 N m max.
15. Assemble all other components into body (16) per Figure 5. Torque the plug (12) to 60 N m.
16. While spring retainer is engaging clevis pin (5) under dowel of link (28), slide the other opening of spring retainer over the top of the screw (3). Attach body assembly (16) to cap (1) with two screws and torque to 102 N m.

TEST AND ADJUSTMENT

1. Plumb 82,8 bar servo supply to control. Supply 82,8 bar to the electric stroker servo supply port. **Note:** All pressure references are "above case pressure" (1,7 bar max.)
2. Thread zero screw (24) so that pump is on stroke.
3. Place a gage in the proportional valve gage port.
4. Start pump.
5. Adjust amperage (approx. 125 mA) to give 3,45 bar reading on the proportional valve gage port. Back out zero screw (24) and adjust screw (9) until output flow is at

zero stroke position. Lock both adjustments in place.

6. Increase amperage to 290 mA. Pump should go to full stroke. Set max. volume screw on opposite control cap for full stroke. Gage in proportional valve gage port should read approximately 14,5 bar.

7. If pump fails to go towards full stroke, or fails to go towards zero stroke, differential pressure may be improperly adjusted. Re-adjust the screw (13 figure 6) out to go towards full or in to go towards zero flow. When correct, lock in place and install cap on differential adjustment.

8. Increase and decrease the amperage between 0 and 290 mA several times at approximately 34,5 bar, 207 bar and 414 bar system pressure. Pump stroke should follow amperage smoothly and proportionally. Full to zero or zero to full stroke should be achieved in 0,7 second. Adjust amperage up to 275 mA from zero stroke, then adjust down from full stroke to 275 mA. The flows at the two 275 mA settings shall not vary more than 10 l/m from each other.

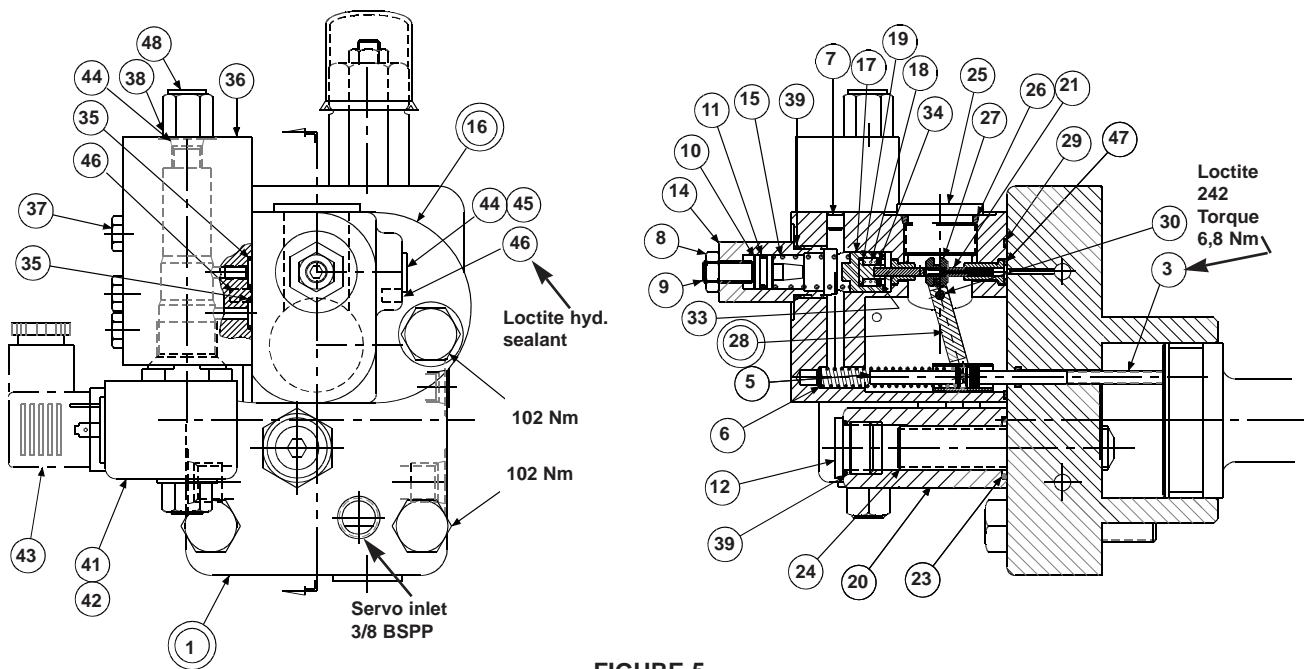


FIGURE 5
ELECTRIC STROKER

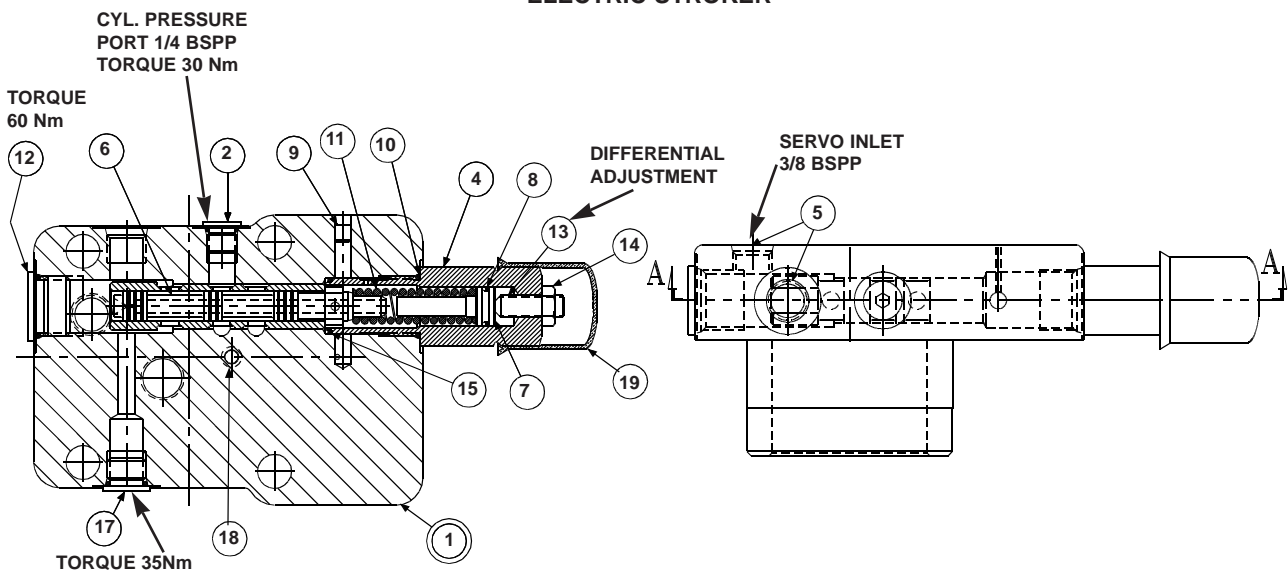


FIGURE 6
SERVO CAP

PARTS LIST FOR FIGURE 5*electric stroker S22-15610*

ITEM	DESCRIPTION	PART NO.	QTY.
1	Cap (Figure 6)	S22-15619	1
3	Screw	032-91461	1
5	Clevis pin	321-40000	1
6	Spring, Compression	032-92100	1
7	Plug, Avseal	447-00026	1
8	Nut, 5/16-24	335-13100	1
9	Soc. Setscrew, 5/16-24 x 1-1/4	312-13180	1
10	Seal Piston	032-91918	1
11	O-Ring, 90 S-1 ARP 012	691-00012	1
12	Plug	488-35018	1
14	Spring Cap	032-91511	1
15	Spring	225-92101	1
16	Body	S22-15393	1
17	Spool	032-91512	1
18	Spring	225-92109	1
19	Spring Retainer	032-91516	1
20	Nut, M16	032-91822	1
21	Spool	032-91438	1
23	O-Ring, 70 S-1 ARP 115	671-00115	1
24	Soc. Setscrew	311-50001	1
25	Plug, 12 HP5N-S	488-35014	1
26	O-Ring, 90 S-1 ARP 912	691-00912	1
27	Sleeve	032-91437	1
28	Arm assembly	S22-15520	1
29	O-Ring, 70 S-1 ARP 035	671-00035	1
30	Dowel Pin, 1/8 Dia x 1.50 Lg.	324-20828	1
33	Ret. Ring	356-30037	1
34	Washer	032-91517	1
35	O-Ring, 70 S-1 ARP 011	671-00011	2
36	Block	032-91509	1
37	Screw, HHC, 1/4-20 x 2 1/4	306-40187	3
38	Adapter	032-91507	1
39	O-Ring, 90 S-1 ARP 908	691-00908	2
41	Prop. Pr. Cont. Valve	517-00085	1
42	Coil, 24VDC	517-00086	1
43	Connector	167-01008-8	1
44	O-Ring, 90 S-1 ARP 904	691-00904	2
45	Plug, SAE-4	488-35061	1
46	Screw, SHC 10-32 x 1/4	312-09041	2
47	O-ring, 70 S-1 ARP 010	671-00010	1
48	Seal	449-00603	1

PARTS LIST FOR FIGURE 6*servo cap S22-15619*

ITEM	DESCRIPTION	PART NO.	QTY.
1	Cap/Sleeve	S22-15620	1
2	Plug	447-01004	1
4	Plug	032-91861	1
5	Plug	449-00599	2
6	Spool	032-59482	1
7	Spring retainer	032-91862	1
8	O-Ring, 90 S-1 ARP 013	691-00013	1
9	Avseal Plug	447-00026	1
10	O-ring, 90 S-1 ARP 910	691-00910	1
11	Spring	032-91863	1
12	Plug, BSPP 1/2	447-01008	1
13	Screw, 5/16 -24 x 1	312-13160	1
14	Nut, 5/16-24	335-13100	1
15	O-ring, 90 S-1 ARP 017	691-00017	1
17	Plug	447-00032	1
18	O-Ring, 70 S-1 ARP 008	671-00008	1
19	Cap	449-00612	1

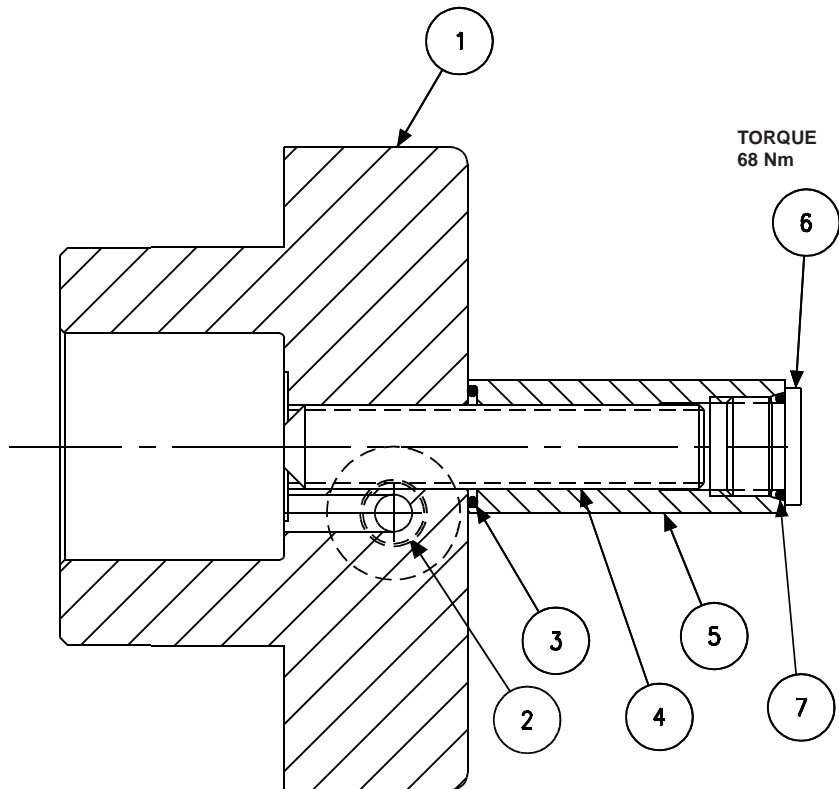
CONTROL CAP DISASSEMBLY

1. See Figure 7. Remove cover (5) and Max. volume screw (4).
2. Remove 4 screws holding cap to pump.
3. Remove cap assembly from pump.

ASSEMBLY

1. Install O-rings on interface between cap and pump control pad. Install cap on pump housing as indicated on the applicable view, guiding the control piston into the bore.
2. Torque the assembly bolts to 102 Nm.
3. Install screw (4) in cap. Install O-ring (3) on nut (5). Install nut (5) on screw.
3. Adjust screw till pump is slightly on stroke and lock nut (5).
4. Install O-ring (7) on plug (6). Install plug in nut (5). Torque plug (6) to 68 Nm.

FIGURE 7
CONTROL CAP ASSEMBLY



PARTS LIST FOR FIGURE 7
control cap assembly S22-15613

ITEM	DESCRIPTION	PART NO.	QTY.
1	Control Cap	032-92229	1
2	Plug	449-00599	1
3	O-ring, 70 S-1 ARP 115	671-00115	1
4	Screw, M16 -2 x 80	311-50001	1
5	Nut	032-91822	1
6	Plug	488-35018	1
7	O-ring 90 S-1 ARP 908	691-00908	1

TORQUE LIMITER OVERRIDE DISASSEMBLY

1. **See figure 8.** Remove 2 screws holding torque limiter body (16) to cap assembly (1).
2. Remove all parts from torque limiter body (16) except pin (30) and arm assembly (28). It is not necessary to remove these parts unless broken or worn. Examine parts for wear or damage.
3. Remove screw (3). Examine head for excessive wear, and body for smooth sealing surface with O-ring.
4. Remove maximum volume stop assembly (items 11, 13, 14, 20 and 24).
5. Remove cap assembly (1).
6. **See fig. 9.** Remove plug (15) and attached parts. Remove spring (11) and spool (18).
7. Remove adjusting plug (2) and attached parts. Remove seal piston (5). Note: a 10-24 screw may be attached to assist in pulling the piston. Remove spring (7) and cone (8).
8. Do not remove sleeve in body (1). Sleeve is pressed into cap and finished to size. If sleeve, snout or cap is worn, replace the cap-sleeve assembly (1).
9. Examine seat (10) for wear. Do not remove unless damaged.

ASSEMBLY

1. **See figure 9.** Install Avseal plugs (9) and orifice (19).
2. Press seat (10) into bore squarely against shoulder in bore.
3. Install spool (18) into bore as shown. Install spring (11) over end of spool. Install O-ring (6) on seal piston (16). Lubricate and install into plug (15). Install O-ring (14) in bottom of bore as shown. Install O-ring (13) on plug (15). Install plug (15) into cap. Install screw (3) and nut (4).
4. Install O-ring (6) on seal piston (5).
5. Lubricate O-ring and install cone (8), spring (7) and seal piston into bore in cap (1), being careful that cone enters seat (10). Install adj. plug (2), screw (25), nut (4), and acorn nut (26).
6. Install plug (12) and torque to 60 Nm. Install plug (21). Torque to 35 Nm.
7. Carefully install O-ring (30) into the cap.
8. Note proper location for cap. Install O-rings on interface between cap and pump control pad. Install cap assembly on pump, guiding the control piston into the bore. Torque two mounting screws to 102 Nm.
9. **See figure 8.** Install maximum stop screw (24), cover (20), O-ring (14) and plug (11) with O-ring (13).
10. Apply Loctite 242 on threads of screw (3), lubricate the shank, thread through the cap into the control piston, and torque to 6,78 Nm.
11. Measure height from control cap to top of screw. With control piston at zero stroke, dimension must be 19,2 +/- 0,76 mm.
12. Press dowel (30) into body (16), through the link assembly (28), to 6,35 mm below surface. Apply Loctite hydraulic sealant[®] to threads of screws (33) and install over dowel (30).
13. While sleeve (27) is engaged into dowel on link (28), slide spool (21) into bore of body (16), and through sleeve (27). Spool (21) must move freely and easily at all positions of the link (28).
14. Assemble remaining parts per drawing. Torque plugs (11) to 68 Nm.
15. While spring retainer is engaging clevis pin (5) under dowel of link (28), slide the other opening of spring retainer over the top of the screw (3). Attach body assembly (16) to cap (1) and torque assembly screws to 102 Nm.

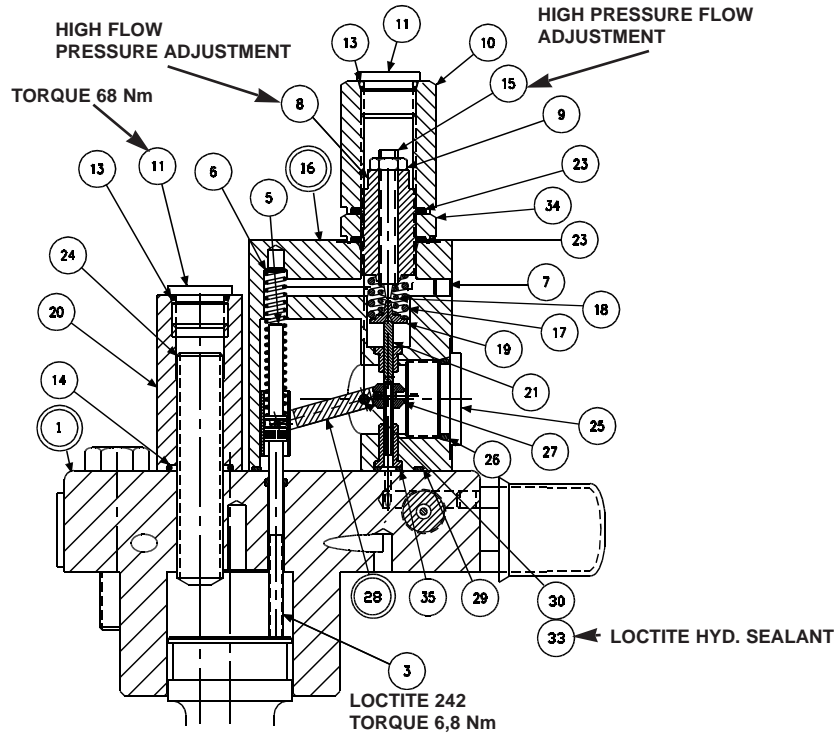


FIGURE 8
TORQUE LIMITER OVERRIDE

PARTS LIST FOR FIGURE 8

torque limiter override
code J S22-15615
code K S22-15632

ITEM	DESCRIPTION	P080 PART NO.	QTY.	
			**J	**K
1	Cap (Figure 9)	S22-15617	1	1
3	Screw	032-91461	1	1
5	Clevis pin	321-40000	1	1
6	Spring, Compression	032-92100	1	1
7	Plug, Avseal	447-00026	1	1
8	Screw	032-91445	1	1
9	Nut, Hex Jam 1/4-20 UNC	340-00038	1	1
10	Hex Nut, 3/4-16 UNF	032-91449	1	1
11	Plug, 8HP N-S	488-35018	2	1
13	O-ring, 90 S-1 ARP 908	691-00908	2	1
14	O-ring, 70 S-1 ARP 115	671-00115	1	1
15	Screw, Primary Adjust	032-91446	1	1
16	Body assembly	S22-15396	1	1
17	Outer Spring – J Version	032-91440	1	—
	Outer Spring – K Version	032-91440	—	1
18	Inner Spring – J Version	032-92240	1	—
	Inner Spring – K Version	032-91441	—	1
19	Spring Retainer	032-91819	1	1
20	Nut, M16	032-91822	1	1
21	Spool	032-91438	1	1
23	O-ring, 70 S-1 ARP 118	671-00118	2	2
24	Screw, M16 - 2 x 80 mm	311-50001	1	1
25	Plug, 12 HP5N-S	488-35014	1	1
26	O-Ring, 90 S-1 ARP 912	691-00912	1	1
27	Sleeve	032-91437	1	1
28	Arm assembly	S22-15520	1	1
29	O-Ring, 70 S-1 ARP 035	671-00035	1	1
30	Dowel Pin, 1/8 Dia. x 1.50 Lg..	324-20824	1	1
33	Screw, SHC 10-32 x 1/4	312-09041	2	2
34	Nut	032-91645	1	1
35	O-Ring, 70 S-1 ARP 010	671-00010	1	1

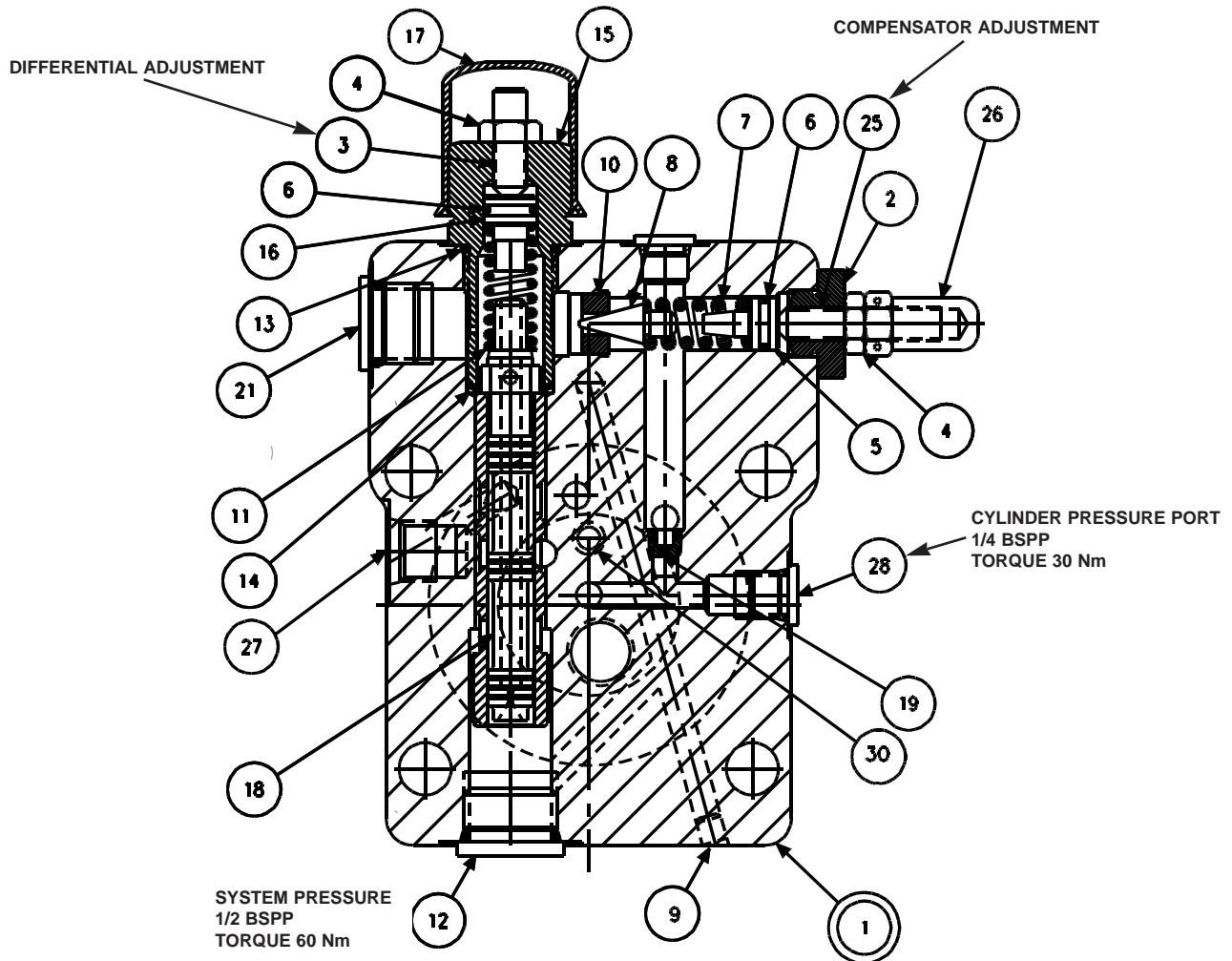


FIGURE 9
TORQUE LIMITER OVERRIDE CAP

PARTS LIST FOR FIGURE 9,
torque limiter override cap S22-15617

ITEM	DESCRIPTION	PART NO.	QTY.
1	Cap-Sleeve Assembly	S22-15618	1
2	Adj. Plug	032-91814	1
3	Soc. Setscrew 5/16-24 x 1	312-13160	1
4	Nut, 5/16-24	335-13100	2
5	Seal Piston	031-59367	1
6	O-Ring, 90 S-1 ARP 012	691-00012	2
7	Spring	032-91798	1
8	Cone	036-12288	1
9	Avseal Plug	447-00026	2
10	Seat	036-11692	1
11	Spring	033-71086	1
12	Plug, BSPP 1/2	447-01008	1
13	O-Ring, 90 S-1 ARP 910	691-00910	1
14	O-Ring, 90 S-1 ARP 017	691-00017	1
15	Plug	031-57368	1
16	Seal Piston	032-91305	1
17	Cap	449-00612	1
18	Spool	032-91820	1
19	Orifice	036-12819	1
21	Plug	447-00032	1
25	Soc. Setscrew 5/16-24 x 1-1/4	312-13180	1
26	Nut, Acorn	036-33474	1
27	Plug	449-00599	1
28	Plug, 1/4 BSPP	447-01004	2
30	O-ring, 70 S-1 ARP 008	671-00008	1

TORQUE LIMITER OVERRIDE TEST AND ADJUSTMENT

1. Install gages on system pressure and on compensator vent ports.
2. Turn compensator adjustment screw out to remove spring load, then 1/2 turn in.
3. Turn differential adjustment screw out to remove spring load, then 1/2 turn in.
4. Back out maximum volume stop to full volume.
5. For setting and testing compensator override function, disable torque limiter in this manner: Back out primary adjusting screw (15) figure 8, to remove all load. Turn in outer adjusting screw (8) to go solid. Caution! do not apply over 1,2 Nm torque to avoid damage to internal parts!
6. Start prime mover with system relief set at 35 bar.
7. Stroke pump to full displacement. Apply a load to the pump.
8. Increase system relief valve until compensator de-strokes pump to zero displacement. Set compensator to 103 bar.
9. Adjust compensator differential spool pressure to 13,8 bar. This is accomplished by adjusting the differential screw until the difference in pressure readings between the system pressure and compensator vent gages installed in the compensator cap is 13,8 bar. (It may be necessary to change differential to gain stability. Use caution when exceeding 17 bar to avoid spring going solid, preventing compensator action.) When correct, lock in place and install cap on differential adjustment.
10. Set the compensator to 207 bar, 414 bar, and 500 bar. At each condition, increase the system pressure until the pump fully de-strokes. At no time should the system pressure vary more than 10,3 bar from the compensator setting. The control should be steady and stable at all conditions.
11. Reduce pressure to 10,3 bar below the compensator setting. Pump should return to full stroke. Repeat two or more times. Compensator setting should be repeatable.
12. Set compensator adjustment to at least 34,5 bar above the required setting, or 483 bar.

Set the torque limiter by using the formula:

$$kW = P \cdot Q / (Eff. \cdot 600)$$

where P = pressure in Bar
Q = flow in l/m

calculate these two values:

- a. System pressure at full pump flow.
 - b. Pump flow at full system pressure.
13. Set system relief valve to pressure (a) calculated above. Back out primary adjusting screw to remove all load. Set outer adjusting screw (8) so that pump just commences to de-stroke.
 14. Set the system relief valve to the required maximum system pressure. Set primary adjusting screw (15) to obtain the calculated flow (b) at full system pressure.
 15. Set compensator adjustment to the required setting, or 414 bar if not otherwise noted.

Note: Electric motor current may be used instead of calculated flows to set power. In step 13, set the outer adjusting screw (8) to achieve the rated motor current. In step 14, set the adjustment (15) to achieve the rated motor current.

COMPENSATOR OVERRIDE DISASSEMBLY

1. **See Figure 10.** Remove tube line to cap.
2. Remove maximum volume stop assembly (items 20, 21, 22, 23, 24).
3. Remove cap assembly.
4. Remove plug (15) and attached parts. Remove spring (11) and spool (18).
5. Remove adj. plug (2) and attached parts. Remove seal piston (5). Note: a 10-24 screw may be attached to assist in pulling the piston. Remove spring (7) and cone (8).
6. Do not remove sleeve in body (1). Sleeve is pressed into cap and finished to size. If sleeve, snout or cap is worn, replace the cap-sleeve assembly (1).

ASSEMBLY

7. Examine seat (10) for wear. Do not remove unless damaged.
1. Install Avseal plugs (9) in body. Install orifice (19) in body.
2. Press seat (10) into bore to shoulder in bore.
3. Install spool (18) into bore as shown. Install spring (11) over end of spool. Install O-ring (6) on seal piston (16). Lubricate and install into plug (15). Install O-ring (14) in bottom of bore as shown. Install O-ring (13) on plug (15). Install plug (15) into cap. Install screw (3) and nut (4).
4. Install O-ring (6) on seal piston (5).
5. Lubricate O-ring and install cone (8), spring (7) and seal piston into bore in cap (1), being careful that cone enters seat (10).
6. Install remaining parts. Torque plug (12) to 60 Nm. Torque plug (31) to 35 Nm. Torque plug (28) to 30 Nm.
7. Note proper location for cap on pump. Install O-rings on interface between cap and pump control pad.
8. Install cap assembly on pump, guiding the control piston into the bore.
9. Torque mounting bolts to 102 Nm.
10. Install tube fitting and tube line connecting to opposite cap.

TEST AND ADJUSTMENT

Compensator is to be tested on pump. Adjust maximum volume stop to full displacement.

1. Install gages on system pressure and on compensator vent ports.
2. Turn compensator adjustment screw (25) CCW until there is no contact with spring, then adjust 1/2 turn CW after contact is made with spring.
3. Turn differential adjustment screw (3) CCW until there is no contact with spring, then adjust 1/2 turn CW after contact is made with spring.
4. Start prime mover with system relief valve set at 35 bar. Apply a load to the pump.
5. Set pump control to full displacement. Pump should go to full displacement at 35 bar.
6. Increase system relief valve until compensator de-strokes pump to zero displacement. Set compensator to 100 bar.
7. Adjust compensator differential spool pressure to 13,8 bar. This is accomplished by adjusting the differential screw until the difference in pressure readings between the system pressure and compensator vent gages installed in the compensator cap is 13,8 bar. (It may be necessary to change differential to gain stability. Use caution when exceeding 17 bar to avoid spring going solid, preventing compensator action.) When correct, lock in place and install cap on differential adjustment.
8. Set the compensator to 207 bar, 414 bar, and 500 bar.
9. At each condition, increase the system pressure until the pump fully de-strokes. At no time should the system pressure vary more than 10,3 bar from the compensator setting. The control should be steady and stable at all conditions.
10. Reduce pressure to 10,3 bar below the compensator setting. Pump should return to full stroke. Repeat two or more times. Compensator setting should be repeatable.
11. Set compensator adjustment to the required setting, or 414 bar if not otherwise noted.

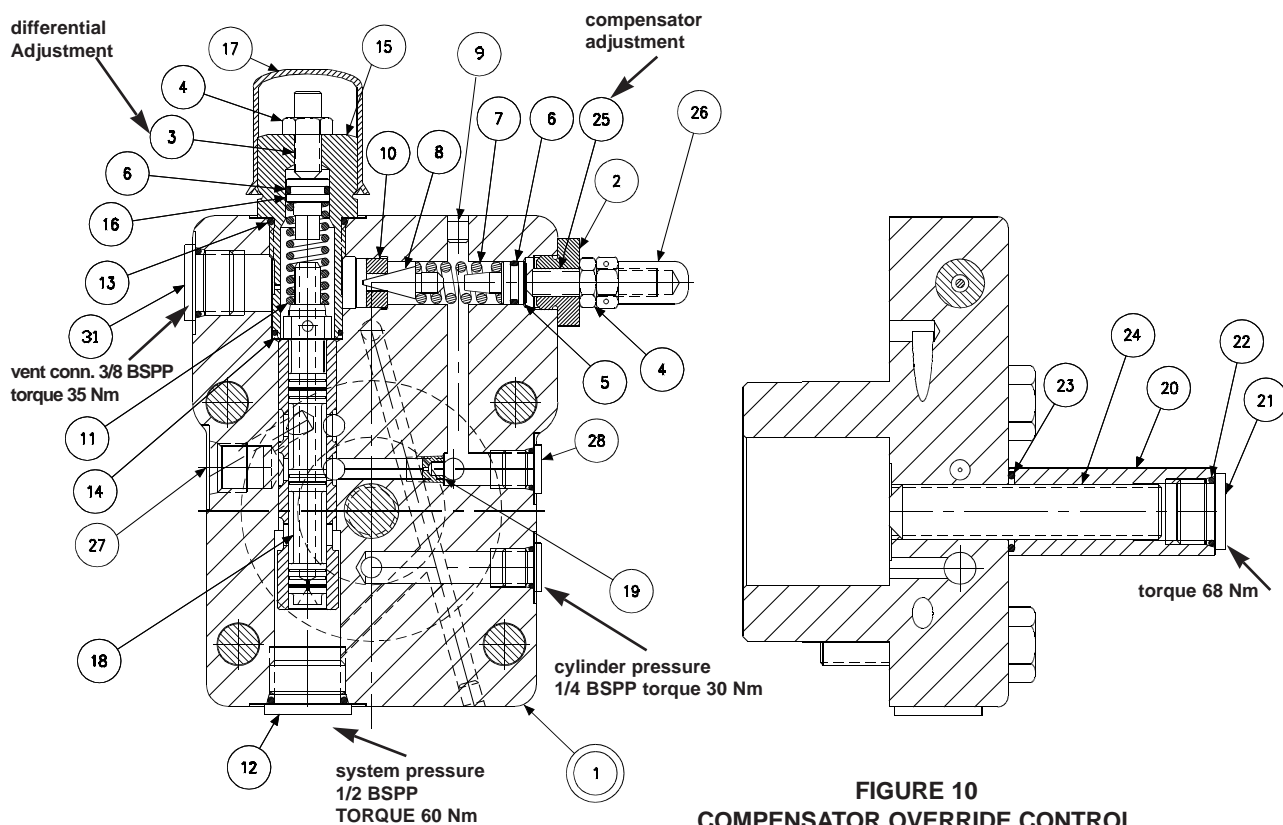


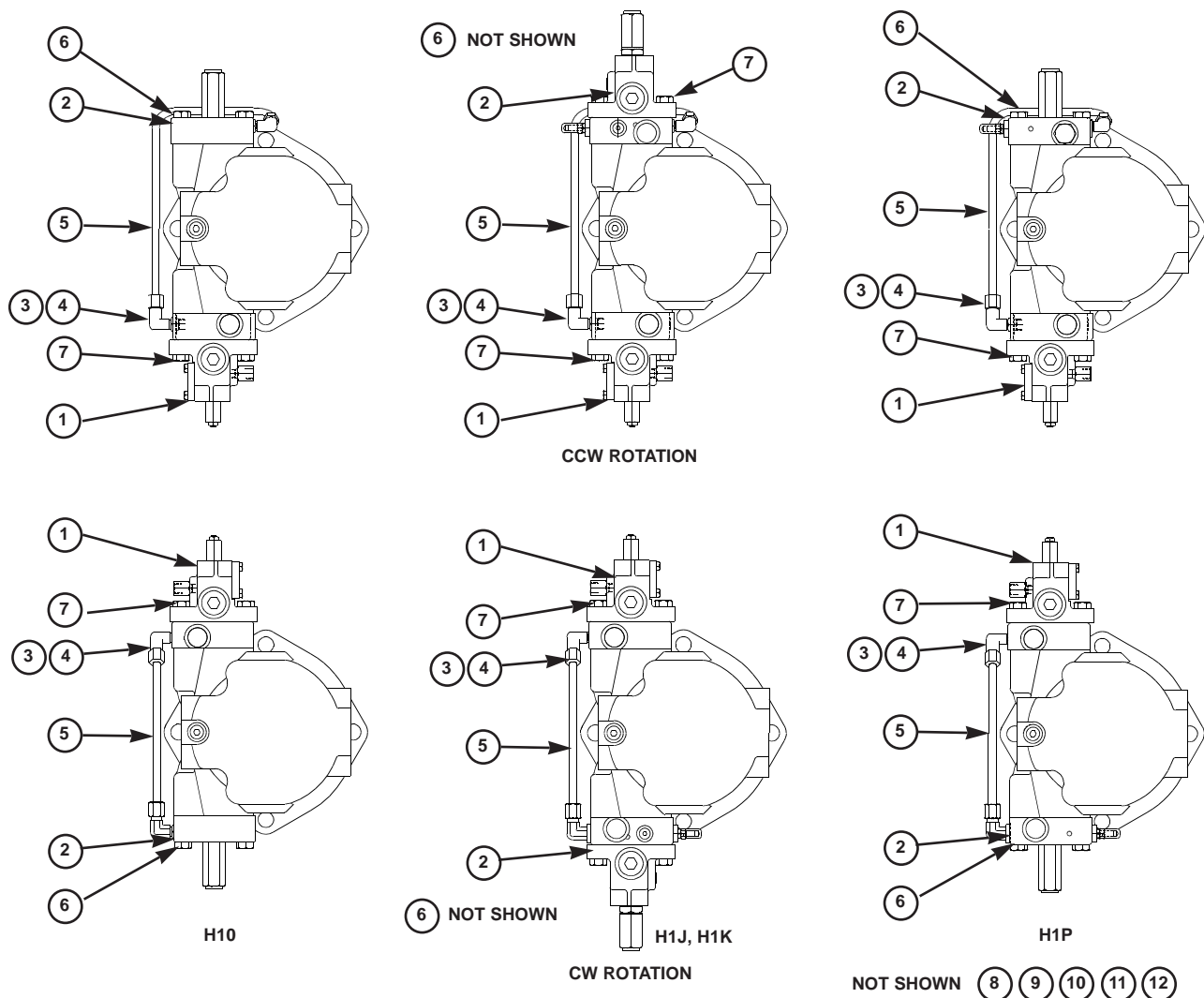
FIGURE 10
COMPENSATOR OVERRIDE CONTROL

PARTS LIST FOR FIGURE 10

compensator override control

S22-15614

ITEM	DESCRIPTION	PART NO.	QTY.
1	Cap-Sleeve Assembly	S22-15616	1
2	Adj. Plug	032-91814	1
3	Soc. Setscrew 5/16-24 x 1	312-13160	1
4	Nut, 5/16-24	335-13100	2
5	Seal Piston	031-59367	1
6	O-Ring, 90 S-1 ARP 012	691-00012	2
7	Spring	032-91798	1
8	Cone	036-12288	1
9	Avseal Plug	447-00026	2
10	Seat	036-11692	1
11	Spring	033-71086	1
12	Plug, 1/2 BSPP	447-01008	1
13	O-Ring, 90 S-1 ARP 910	691-00910	1
14	O-Ring, 90 S-1 ARP 017	691-00017	1
15	Plug	031-57368	1
16	Seal Piston	032-91305	1
17	Cap	449-00612	1
18	Spool	032-91820	1
19	Orifice	033-25528	1
20	Nut, M16	032-91822	1
21	Plug	488-35018	1
22	O-ring, 90 S-1 ARP 908	691-00908	1
23	O-ring, 70 S-1 ARP 115	671-00115	1
24	Soc.setscrew	311-50001	1
25	Soc. Setscrew 5/16-24 x 1-1/4	312-13180	1
26	Acorn Nut	036-33474	1
27	Plug	449-00599	1
28	Plug, BSPP 1/4	447-01004	2
31	Plug, BSPP 3/8	447-00032	1



HYDRAULIC STROKER

parts list

ITEM	DESCRIPTION	P080	QUANTITY			
		PART NO.	H10	H1J	H1K	H1P
1	Hydraulic Stroker (Fig. 11)	S22-15611	1	1	1	1
2	Control Cap (Fig. 7)	S22-15613	1	—	—	—
	Low Torque Override (Fig. 8)	S22-15615	—	1	—	—
	High Torque Override	S22-15632	—	—	1	—
	Comp. Override (Fig. 10)	S22-15614	—	—	—	1
*3	O-Ring, 90 S-1 ARP 113	691-00113	2	2	2	2
*4	Elbow	494-15019	2	2	2	2
*5	Tube, CW	032-92250	1	1	1	1
	Tube, CCW	032-92251				
**6	Screw-H.H.C., M12 x 55 mm	363-12205	6	4	4	6
**7	Screw-H.H.C., M12 x 75 mm	363-12220	2	4	4	2
8	Control Piston	032-91785	1	1	1	1
9	O-Ring, 70 S-1 ARP 013	671-00013	2	2	2	2
10	O-Ring, 70 S-1 ARP 151	671-00151	2	2	2	2
11	Piston Ring	032-91816	1	1	1	1
12	Piston Ring	032-91811	1	1	1	1

*Tubing assembly including items 3, 4, and 5 are available as S22-15605 (CW), S22-15606 (CCW)

**Included with items 1, 2

HYDRAULIC STROKER DISASSEMBLY

1. **See figure 11.** Remove 2 screws holding body (16) to cap assembly (1).
2. Remove all parts from body (16) except pin (30) and arm assembly (28). It is not necessary to remove these parts unless broken or worn. Examine parts for wear or damage.
3. Remove screw (3). Examine head for excessive wear, and body for smooth sealing surface with O-ring.
4. **See figure 6.** Remove tube lines to cap assembly.
5. Remove screws holding cap assembly to pump body.
6. Remove cap assembly (1). Remove plug (4) with attached parts. Remove spring (11) and spool (6).
7. Do not remove sleeve in body (1). Sleeve is pressed into cap and finished to size. If sleeve or cap is worn, replace the cap-sleeve assembly (1).
8. Remove screw (13) and nut (14). Remove the retainer (7).

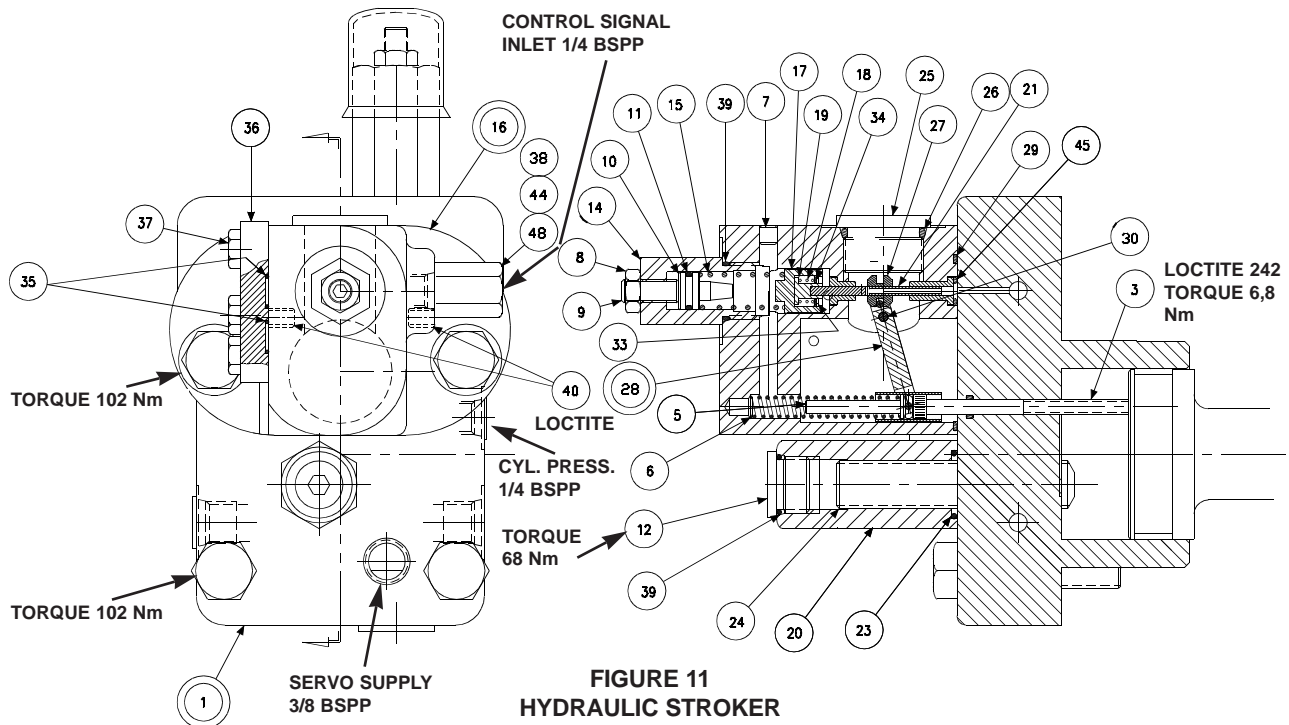
ASSEMBLY

1. **See figure 6.** Install Avseal plug (9) in cap.
2. Install spool (6) into bore as shown. Install spring (11) over end of spool.
3. Install O-ring (8) on spring retainer (7). Install retainer (7), screw (13), and nut (14) in plug (4).
4. Install O-ring (15) in bottom of bore as shown. Install O-ring (10) on plug (4). Install plugs (4) and (12) in body (1). Torque plugs to 60 Nm. Install O-ring (18) in cap.
5. Turn screw (13) in until spring retainer (17) contacts spring (11). Turn an additional 1-1/2 turns and lock in position.
6. Note proper location for control on pump. Install O-rings on interface between cap and pump control pad. Install cap on pump control pad, guiding the control piston into the bore.
7. Torque two assembly bolts to 102 Nm.
8. **See figure 11.** Apply Loctite 242 on threads of screw (3), lubricate the shank, thread through the cap into the control piston, and torque to 6,78 Nm.
9. Install minimum stop screw (24) and turn clockwise to stroke pump to full volume. Measure height from control cap to top of screw (3). With control piston at full stroke, dimension must be 19,2 +/- 0,76 mm. Back out minimum stop screw (24) till there is no contact with control piston.
10. Press dowel (30) into body (16), through the link (28), to 6,35 mm below surface. Apply Loctite hydraulic sealant to threads of screws (40) and install over dowel (30).
11. Press spool (21) into retainer (19). Caution: do not use excessive force. Place spool/retainer assembly into spool (17) with spring (18) and washer (34). Secure with retaining ring (33).
12. While sleeve (27) is engaged into dowel on link (28), slide above spool assembly into bore of body (16), and through sleeve (27). Spool (21) must move freely and easily at all positions of the link (28).
13. Assemble all other components into body (16) per figure 11. Torque plug (12) to 68 Nm.
14. While spring retainer is engaging clevis pin (5) under dowel of link (28), slide the other opening of spring retainer over the top of the screw (3). Attach body assembly (16) to cap (1) with two screws and torque to 102 Nm.

TEST AND ADJUSTMENT

1. Plumb 82,8 bar servo supply to control.
2. Thread zero screw (24) so that pump is on stroke.
3. Start pump.
4. Supply 20 bar to hydraulic stroker control port.
5. Adjust screw (9) until output flow is at the full stroke position. Lock in place.
6. Reduce control pressure to 0 bar. Back out zero screw (24) until pump is at zero stroke. Lock in place.
7. Increase and decrease control pressure between 0 and 20 bar several times at approximately 34,5 bar, 207 bar, and 414 bar system pressure. Pump stroke should follow control pressure smoothly and proportionally. Full to zero or zero to full stroke should be achieved in no more than .7 second. Full stroke should be achieved at 14,5 bar. Zero stroke should be achieved at 3,45 +/- 1 bar. Adjust control pressure up to 12 bar from zero stroke, then adjust down from full stroke to 12 bar. The flows at the two settings shall not vary more than 10 l/m from each other. When all adjustments are correct, lock in place and install cap on differential adjustment.

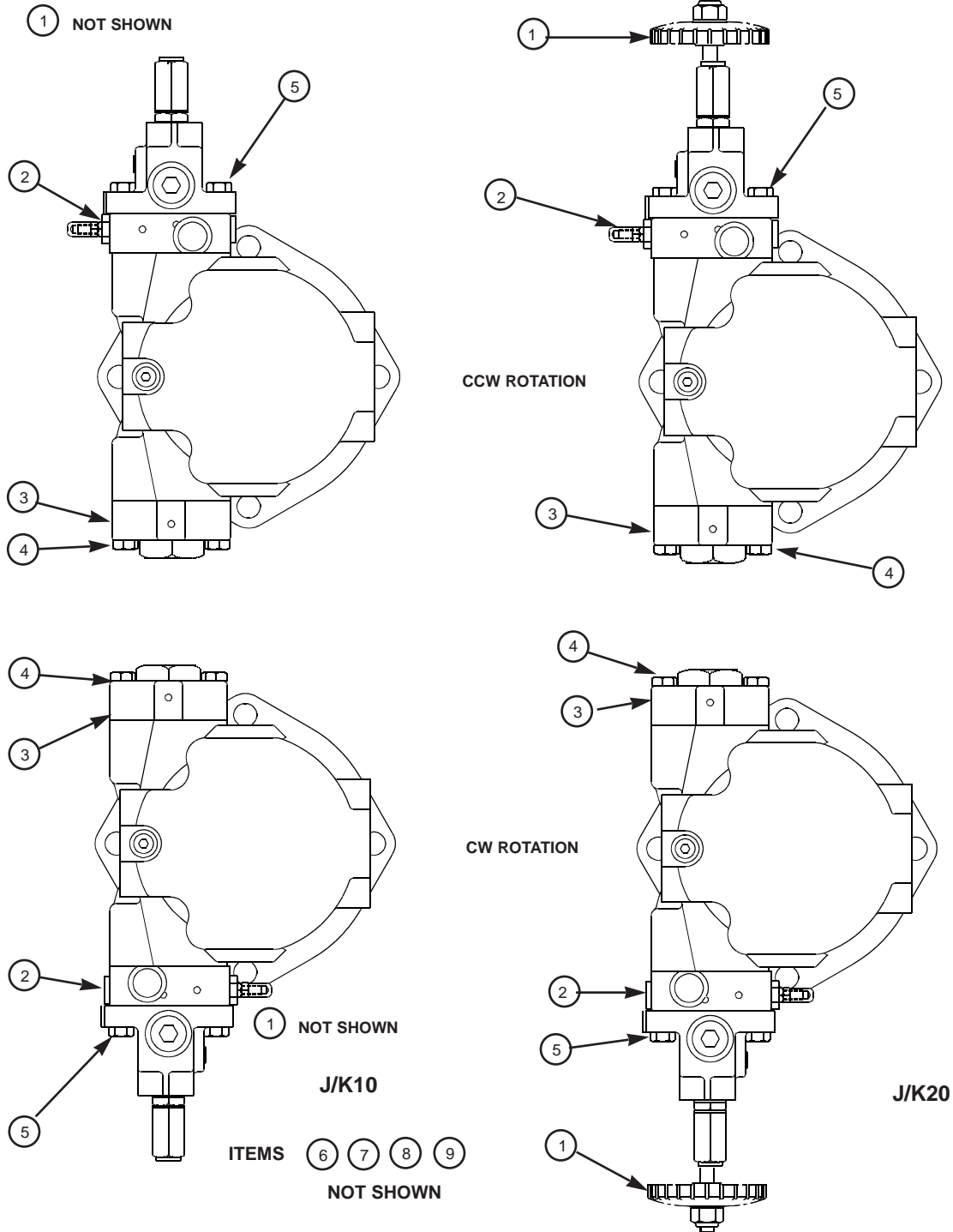
HYDRAULIC STROKER



PARTS LIST FOR FIGURE 11 *hydraulic stroker S22-15611*

ITEM	DESCRIPTION	PART NO.	QTY.
1	Cap (Figure 6)	S22-15619	1
3	Screw	032-91461	1
5	Clevis pin	321-40000	1
6	Spring, Compression	032-92100	1
7	Plug, Avseal	447-00026	1
8	Nut, 5/16-24	335-13100	1
9	Soc. Setscrew, 5/16-24 x 1-1/4	312-13180	1
10	Seal Piston	032-91918	1
11	O-Ring, 90 S-1 ARP 012	691-00012	1
12	Plug, 8 HP5N-S	488-35018	1
14	Spring Cap	032-91511	1
15	Spring	225-92101	1
16	Body	S22-15393	1
17	Spool	032-91512	1
18	Spring	225-92109	1
19	Spring Retainer	032-91516	1
20	Nut, M16	032-91822	1
21	Spool	032-91438	1
23	O-Ring, 70 S-1 ARP 115	671-00115	1
24	Soc. Setscrew, M16 - 2 x 80 mm	311-50001	1
25	Plug, 12 HP5N-S	488-35014	1
26	O-Ring, 90 S-1 ARP 912	691-00912	1
27	Sleeve	032-91437	1
28	Arm assembly	S22-15520	1
29	O-Ring, 70 S-1 ARP 035	671-00035	1
30	Dowel Pin, 1/8 Dia x 1.50 Lg.	324-20824	1
33	Ret. Ring	356-30037	1
34	Washer	032-91517	1
35	O-Ring, 70 S-1 ARP 011	671-00011	2
36	Plate	032-91510	1
37	Screw, HHC, 1/4-20 x 3/4	306-40142	3
38	Adapter	032-91507	1
39	O-Ring, 90 S-1 ARP 908	691-00908	1
40	Screw, SHC 10-32 x 1/4	312-09041	2
44	O-ring, 90 S-1 ARP 904	691-00904	1
45	O-ring, 70 S-1 ARP 010	671-00010	1
48	Seal	449-00603	1

TORQUE LIMITER



PARTS LIST

torque limiter

TORQUE LIMITER		P080	QUANTITY			
ITEM	DESCRIPTION	PART NO.	J10	K10	J20	K20
1	Max. Vol. Stop (Fig. 1)	S22-15467	1	1	—	—
	Max Vol. Handwheel (Fig. 2)	S22-15448	—	—	1	1
*2	Low Torque Limiter (Fig. 12)	S22-15624	1	—	—	—
	High Torque Limiter	S22-15631	—	1	—	—
	Low Torque Limiter	S22-15634	—	—	1	—
	High Torque Limiter	S22-15636	—	—	—	1
3	Buck Up Cap (Fig. 4)	S22-15447	1	1	1	1
4	Screw-H.H.C., M12 x 55 mm	363-12205	6	6	4	4
5	Screw-H.H.C., M12 x 75 mm	363-12220	2	2	4	4
6	Control Piston	032-91836	1	1	1	1
7	O-Ring, 70 S-1 ARP 013	671-00013	2	2	2	2
8	O-Ring, 70 S-1 ARP 151	671-00151	2	2	2	2
9	Piston ring	032-91816	2	2	2	2

*Includes items 1, 4, 5

TORQUE LIMITER DISASSEMBLY

1. **See Figure 12.** Remove 2 screws holding torque limiter body (16) to cap assembly (1).
2. Remove all parts from torque limiter body (16) except pin (30) and arm assembly (28). It is not necessary to remove these parts unless broken or worn. Examine parts for wear or damage.
3. Remove screw (3). Examine head for excessive wear, and body for smooth sealing surface with O-ring.
4. Remove maximum stop handwheel assembly or maximum stop screw assembly.
5. Remove cap assembly (1).
6. **See Figure 13** Remove plug (15) and attached parts. Remove spring (11) and spool (18).
7. Remove adjusting plug (2) and attached parts. Remove spring (7) and cone (8).
8. Do not remove sleeve in body (1). Sleeve is pressed into cap and finished to size. If sleeve or cap is worn, replace the cap-sleeve assembly (1).
9. Examine seat (10) for wear. Do not remove unless damaged.

ASSEMBLY

1. **See Figure 13** Install Avseal plugs (9) and orifice (19) in body.
2. Press seat (10) into bore squarely against shoulder in bore.
3. Install spool (18) into bore as shown. Install spring (11) over end of spool. Install O-ring (6) on seal piston (16). Lubricate and install into plug (15). Install O-ring (14) in bottom of bore as shown. Install O-ring (13) on plug (15). Install plug (15) into cap. Install screw (3) and nut (4). Install plug (12). Torque plugs (12) and (15) to 60 Nm. Install plug (21). Torque to 35 Nm. Install plug (28). Torque to 30 Nm.
4. Install O-ring (6) on seal piston (5). Lubricate O-ring and Install cone (8), spring (7) and seal piston (5) into bore in cap (1), being careful that cone enters seat (10). Install adj. plug (2), screw (25), nut (4) and acorn nut (26).
5. Carefully install O-ring (27) in the cap.
6. Note proper location for control cap. Install O-rings on interface between cap and pump control pad. Install cap, guiding control piston into bore.
7. Install maximum volume handwheel or screw assembly. Set stop to clear control piston. Install two mounting screws and torque to 102 Nm.
8. **See Figure 12.** Apply Loctite 242 on threads of screw (3), lubricate the shank, thread through the cap into the control piston, and torque to 6,78 Nm
9. Measure height from control cap to top of screw. With control piston at full stroke, dimension must be 38,1 +/- .76 mm.
10. Press dowel (30) into body (16), through the link assembly (28), to 6,35 mm below surface. Apply Loctite hydraulic sealant to threads of screws (35) and install over dowel (30).
11. While sleeve (27) is engaged into dowel on link (28), slide spool (21) into bore of body (16), and through sleeve (27). Spool (21) must move freely and easily at all positions of the link (28).
12. Assemble remaining parts per drawing. While spring retainer is engaging clevis pin (5) under dowel of link (28), slide the other opening of spring retainer over the top of the screw (3). Attach body assembly (16) to cap (1) and torque screws to 102 Nm.

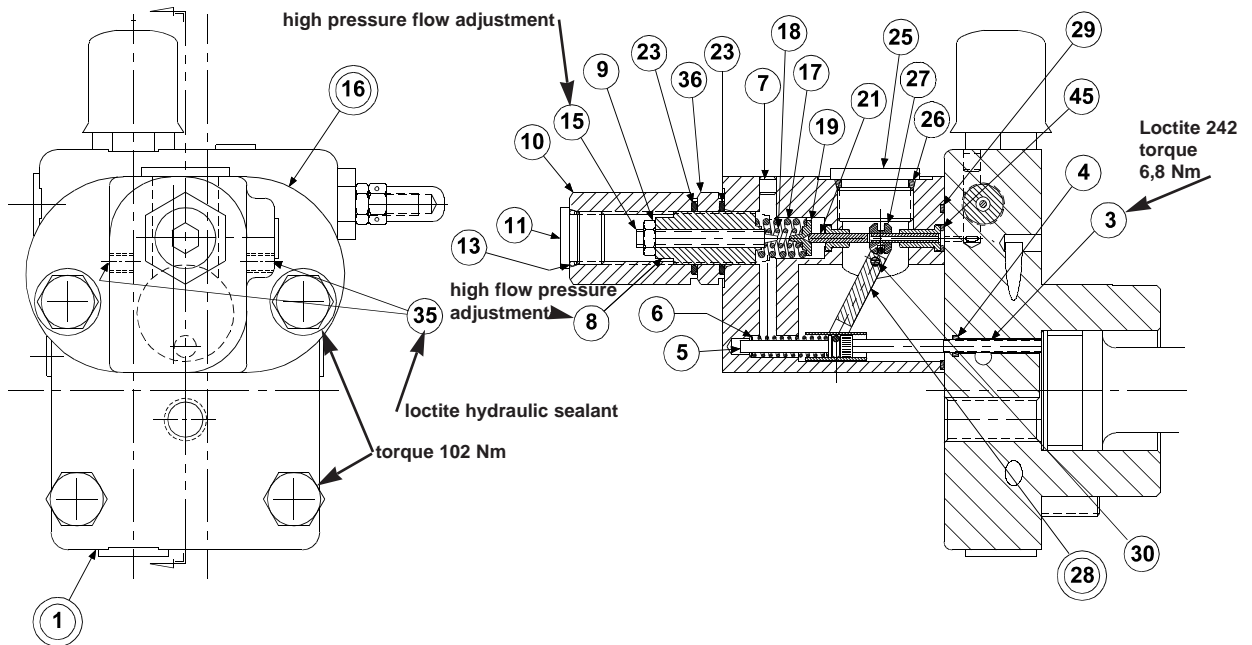


FIGURE 12 – TORQUE LIMITER ASSEMBLY

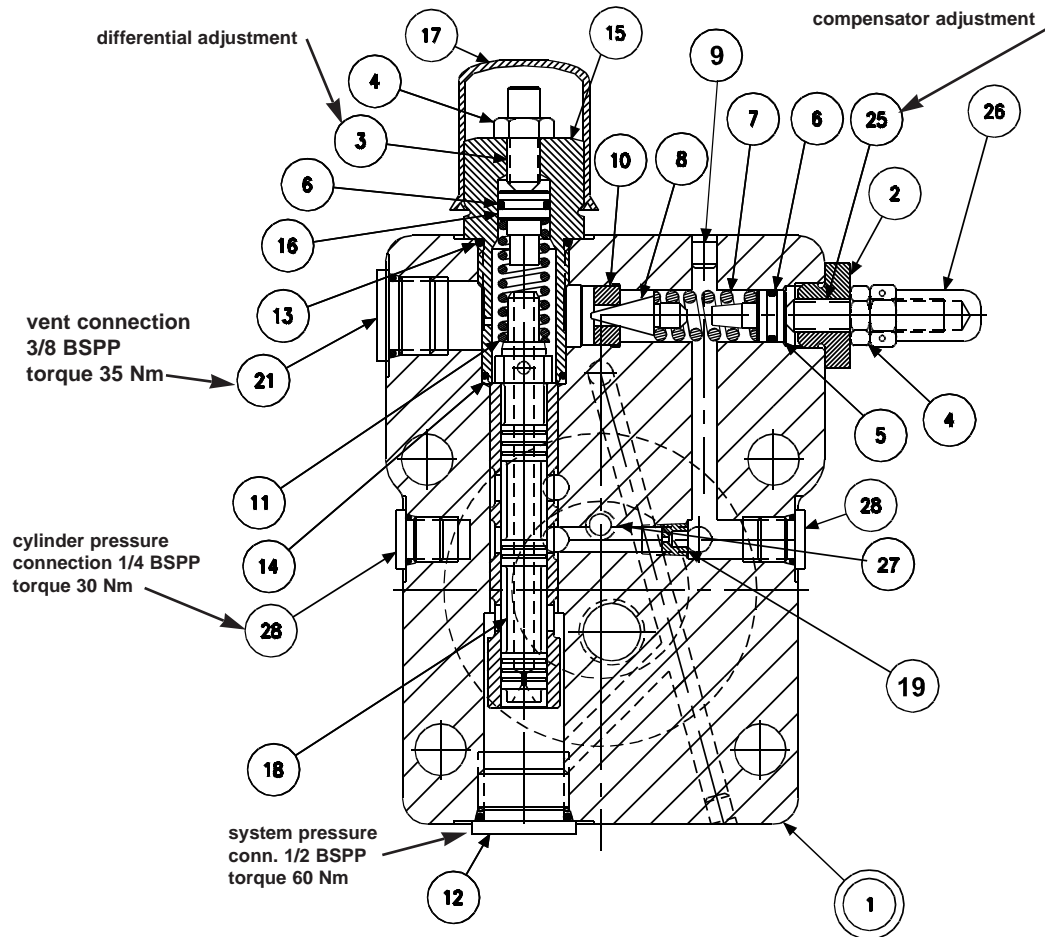


FIGURE 13
TORQUE LIMITER CAP

TORQUE LIMITER

PARTS LIST FOR FIG. 12

code J10, S22-15624

code K10, S22-15631

code J20, S22-15634

code K20, S22-15636

ITEM	DESCRIPTION	P080	QTY.	
		PART NO.	J*0	K*0
1	Cap (Figure 13)	S22-15607	1	1
3	Screw	032-91461	1	1
5	Clevis pin	321-40000	1	1
6	Spring, Compression	032-92100	1	1
7	Plug, Avseal	447-00026	1	1
8	Screw	032-91445	1	1
9	Nut, Hex Jam 1/4-20 UNC	340-00038	1	1
10	Hex Nut, 3/4-16 UNF	032-91449	1	1
11	Plug, 8HP N-S	488-35018	1	1
13	O-ring, 90 S-1 ARP 908	691-00908	1	1
15	Screw, Primary Adjust	032-91446	1	1
16	Body assembly	S22-15396	1	1
17	Outer Spring – J Version	032-91440	1	—
	Outer Spring – K Version	032-91440	—	1
18	Inner Spring – J Version	032-92240	1	—
	Inner Spring – K Version	032-91441	—	1
19	Spring Retainer	032-91819	1	1
21	Spool	032-91438	1	1
23	O-ring, 70 S-1 ARP 118	671-00118	2	2
25	Plug, 12 HP5N-S	488-35014	1	1
26	O-Ring, 90 S-1 ARP 912	691-00912	1	1
27	Sleeve	032-91437	1	1
28	Arm assembly	S22-15520	1	1
29	O-Ring, 70 S-1 ARP 035	671-00035	1	1
30	Dowel Pin, 1/8 Dia. x 1.75 Lg..	324-20824	1	1
35	Screw, SHC 10-32 x 1/4	312-09041	2	2
36	Nut	032-91645	1	1
45	O-Ring, 70 S-1 ARP 010	671-00010	1	1

PARTS LIST FOR FIGURE 13

torque limiter cap S22-15607

ITEM	DESCRIPTION	PART NO.	QTY.
1	Cap-Sleeve Assembly	S22-15608	1
2	Adj. Plug	032-91814	1
3	Soc. Setscrew 5/16-24 x 1	312-13160	1
4	Nut, 5/16-24	335-13100	2
5	Seal Piston	031-59367	1
6	O-Ring, 90 S-1 ARP 012	691-00012	2
7	Spring	032-91798	1
8	Cone	036-12288	1
9	Avseal Plug	447-00026	3
10	Seat	036-11692	1
11	Spring	033-71086	1
12	Plug, BSPP 1/2	447-01008	1
13	O-Ring, 90 S-1 ARP 910	691-00910	1
14	O-Ring, 90 S-1 ARP 017	691-00017	1
15	Plug	031-57368	1
16	Seal Piston	032-91305	1
17	Cap	449-00612	1
18	Spool	032-59482	1
19	Orifice	033-25528	1
21	Plug BSPP 3/8	447-00032	1
25	Soc. Setscrew 5/16-24 x 1-1/4	312-13180	1
26	Nut, Acorn 5/16-24	036-33474	1
27	O-Ring, 70 S-1 ARP 008	671-00008	1
28	Plug, BSPP 1/4	447-01004	2

TORQUE LIMITER TEST AND ADJUSTMENT

1. Install gages on system pressure and on compensator vent ports.
2. Turn compensator adjustment screw out to remove spring load, then 1/2 turn in.
3. Turn differential adjustment screw out to remove spring load, then 1/2 turn in.
4. Back out maximum volume stop to full volume.
5. For setting and testing compensator override function, disable torque limiter in this manner: Back out primary adjusting screw (15) to remove all load. Turn in outer adjusting screw (8) to go solid. Caution! do not apply over 1,2 Nm torque to avoid damage to internal parts!
6. Start prime mover with system relief set at 35 bar. Apply a load to the pump.
7. Pump should be at full displacement at 35 bar.
8. Increase system relief valve until compensator de-strokes pump to zero displacement. Set compensator to 103 bar.
9. Adjust compensator differential spool pressure to 13,8 bar. This is accomplished by adjusting the differential screw until the difference in pressure readings between the system pressure and compensator vent gages installed in the compensator cap is 13,8 bar. (It may be necessary to change differential to gain stability. Use caution when exceeding 17 bar to avoid spring going solid, preventing compensator action.) When correct, lock in place and install cap on differential adjustment.
10. Set the compensator to 207 bar, 414 bar, and 500 bar.
11. At each condition, increase the system pressure until the pump fully de-strokes. At no time should the system pressure vary more than 10,3 bar from the compensator setting. The control should be steady and stable at all conditions.
12. Reduce pressure to 10,3 bar below the compensator setting. Pump should return to full stroke. Repeat two or more times. Compensator setting should be repeatable.
13. Set compensator adjustment to at least 34,5 bar above the required setting, or 483 bar.

Set the torque limiter by using the formula:

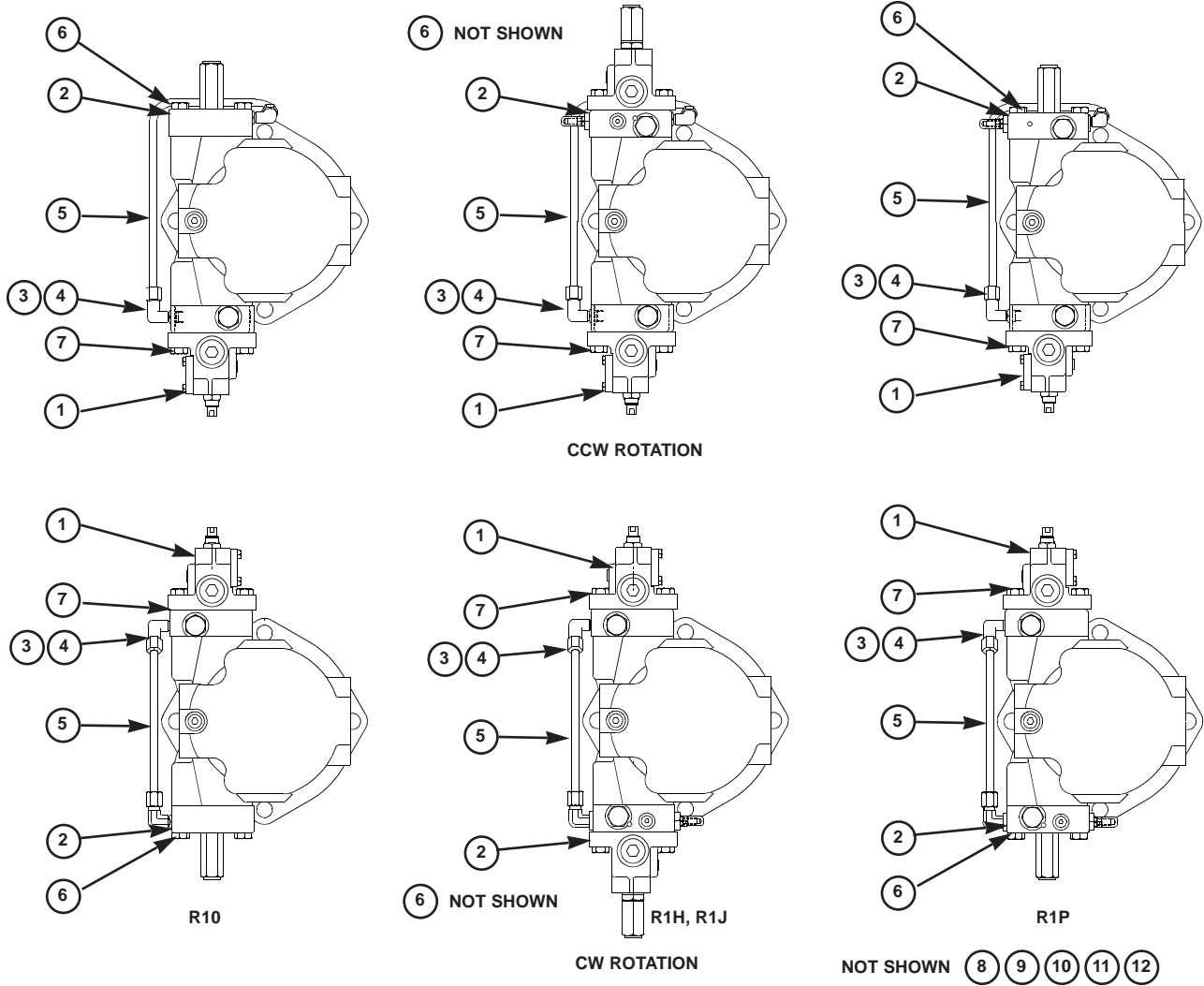
$$kW = P \cdot Q / (Eff. \cdot 600)$$

where P = pressure in Bar
Q = flow in l/m

calculate these two values:

- a. System pressure at full pump flow.
 - b. Pump flow at full system pressure.
14. Set system relief valve to pressure (a) calculated above. Back out primary adjusting screw to remove all load. Set outer adjusting screw (8) so that pump just commences to de-stroke.
 15. Set the system relief valve to the required maximum system pressure. Set primary adjusting screw (15) to obtain the calculated flow (b) at full system pressure.
 16. Set compensator adjustment to the required setting, or 414 bar if not otherwise noted.

Note: Electric motor current may be used instead of calculated flows to set power. In step 14, set the outer adjusting screw (8) to achieve the rated motor current. In step 15, set the adjustment (15) to achieve the rated motor current.



PARTS LIST

rotary servo

ITEM	DESCRIPTION	P080	QUANTITY			
		PART NO.	R10	R1J	R1K	R1P
1	Rotary Servo (Fig. 14)	S22-15612	1	1	1	1
2	Control Cap (Fig. 7)	S22-15613	1	—	—	—
	Low Torque Override (Fig. 8)	S22-15615	—	1	—	—
	High Torque Override	S22-15632	—	—	1	—
	Comp. Override (Fig. 10)	S22-15614	—	—	—	1
*3	O-Ring, 90 S-1 ARP 113	691-00113	2	2	2	2
*4	Elbow	494-15019	2	2	2	2
*5	Tube, CW	032-92250	1	1	1	1
	Tube, CCW	032-92251				
**6	Screw-H.H.C., M12 x 55 mm	363-12205	6	4	4	6
**7	Screw-H.H.C., M12 x 75 mm	363-12220	2	4	4	2
8	Control Piston	032-91785	1	1	1	1
9	O-Ring, 70 S-1 ARP 013	671-00013	2	2	2	2
10	O-Ring, 70 S-1 ARP 151	671-00151	2	2	2	2
11	Piston Ring	032-91816	1	1	1	1
12	Piston Ring	032-91811	1	1	1	1

*Tubing assembly including items 3, 4, and 5 are available as S22-15605 (CW), S22-15606 (CCW)

**Included in items 1, 2

ROTARY SERVO DISASSEMBLY

1. **See Figure 14.** Remove 2 screws holding body (16) to cap assembly (1).
2. Remove all parts from body (16) except pin (30) and arm assembly (28). It is not necessary to remove these parts unless broken or worn. Examine parts for wear or damage.
3. Remove screw (3). Examine head for excessive wear, and body for smooth sealing surface with O-ring.
4. **See Figure 6.** Remove tube lines to cap assembly.
5. Remove screws holding cap assembly to pump body.
6. Remove cap assembly (1). Remove plug (4) with attached parts. Remove spring (11) and spool (6).
7. Do not remove sleeve in body (1). Sleeve is pressed into cap and finished to size. If sleeve or cap is worn, replace the cap-sleeve assembly (1).
8. Remove screw (13) and nut (14). Remove the retainer (7).

ASSEMBLY

1. **See Figure 6.** Install Avseal plug (9) in cap.
2. Install spool (6) into bore as shown. Install spring (11) over end of spool.
3. Install O-ring (8) on spring retainer (7). Install retainer (7), screw (13) and nut (14) in plug (4).
4. Install O-ring (15) in bottom of bore as shown. Install O-ring (10) on plug (4). Install plugs (4) and (12) in body (1). Torque plugs to 60 Nm. Install O-ring (18) in cap.
5. Turn screw (13) in until spring retainer (7) contacts spring (11). Turn an additional 1-1/2 turns and lock in position.
6. Note proper location for control on pump. Install O-rings on interface between cap and pump control pad. Install cap on pump control pad, guiding the control piston into the bore.
7. Install and torque two assembly bolts to 102 Nm.
8. **See Figure 14,** Apply Loctite 242 on threads of screw (3), lubricate the shank, thread through the cap into the control piston, and torque to 6,78 Nm.
9. Install minimum stop screw (24) and turn clockwise to stroke pump to full stroke. Measure height from control cap to top of screw (3). With control piston at full stroke, dimension must be 19,2 +/- 0,76 mm. Back out minimum stop screw (24) till there is no contact with control piston.
10. Press dowel (30) into body (16), through the link (28), to 1/4 in. (6.35 mm) below surface. Apply Loctite hydraulic sealant to threads of screws (39) and install over dowel (30).
11. Press spool (21) into retainer (19). Caution: do not use excessive force.
12. While sleeve (27) is engaged into dowel on link (28), slide above spool assembly with spring (15) into bore of body (16), and through sleeve (27). Spool (21) must move freely and easily at all positions of the link (28).
13. Press dowel (34) through slide pin (14), while inside shaft (10). Dowel (34) must evenly extend from both sides of slide pin (14).
14. Assemble all other components into body (16) per figure 14. Torque plug (12) to 60 Nm.
15. While spring retainer is engaging clevis pin (5) under dowel of link (28), slide the other opening of spring retainer over the top of the screw (3). Attach body assembly (16) to cap (1) with two screws and torque to 102 Nm.

TEST AND ADJUSTMENT

1. Plumb 82,8 bar servo supply to control.
2. Thread zero screw (24) so that pump is on stroke.
3. Start pump.
4. With shaft (10) rotated fully clockwise, thread cam (9) until output flow is at the full stroke position. Lock in place.
5. Fully rotate shaft (10) counter-clockwise. Pump flow should go towards zero stroke. Back out zero screw (24) until pump is at zero stroke. Lock in place.
6. If pump fails to go towards full stroke, or fails to go towards zero stroke, differential pressure may be improperly adjusted. Re-adjust the screw (13 figure 6) *out* to go towards full or *in* to go towards zero flow. When correct, lock in place and install cap on differential adjustment.
7. Rotate shaft clockwise and counterclockwise at approximately 34,5 bar, 207 bar and 414 bar system pressure. Pump stroke should follow shaft rotation between full and zero stroke smoothly and proportionally. Full to zero or zero to full stroke should be achieved in no more than 0,7 second.

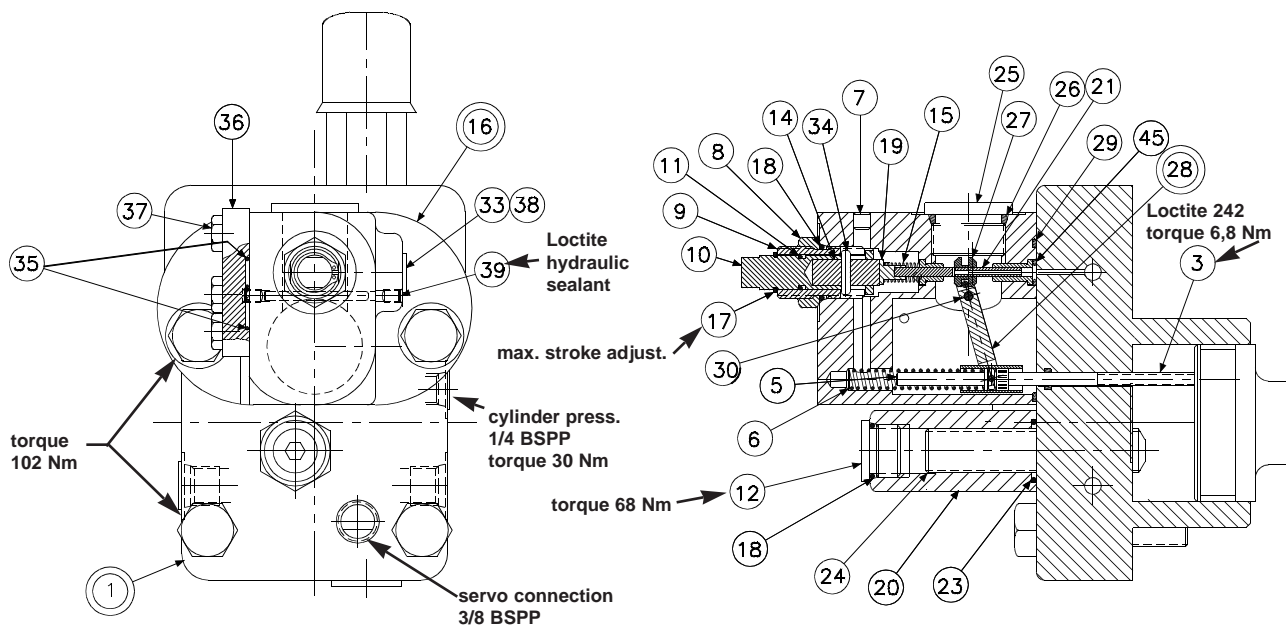
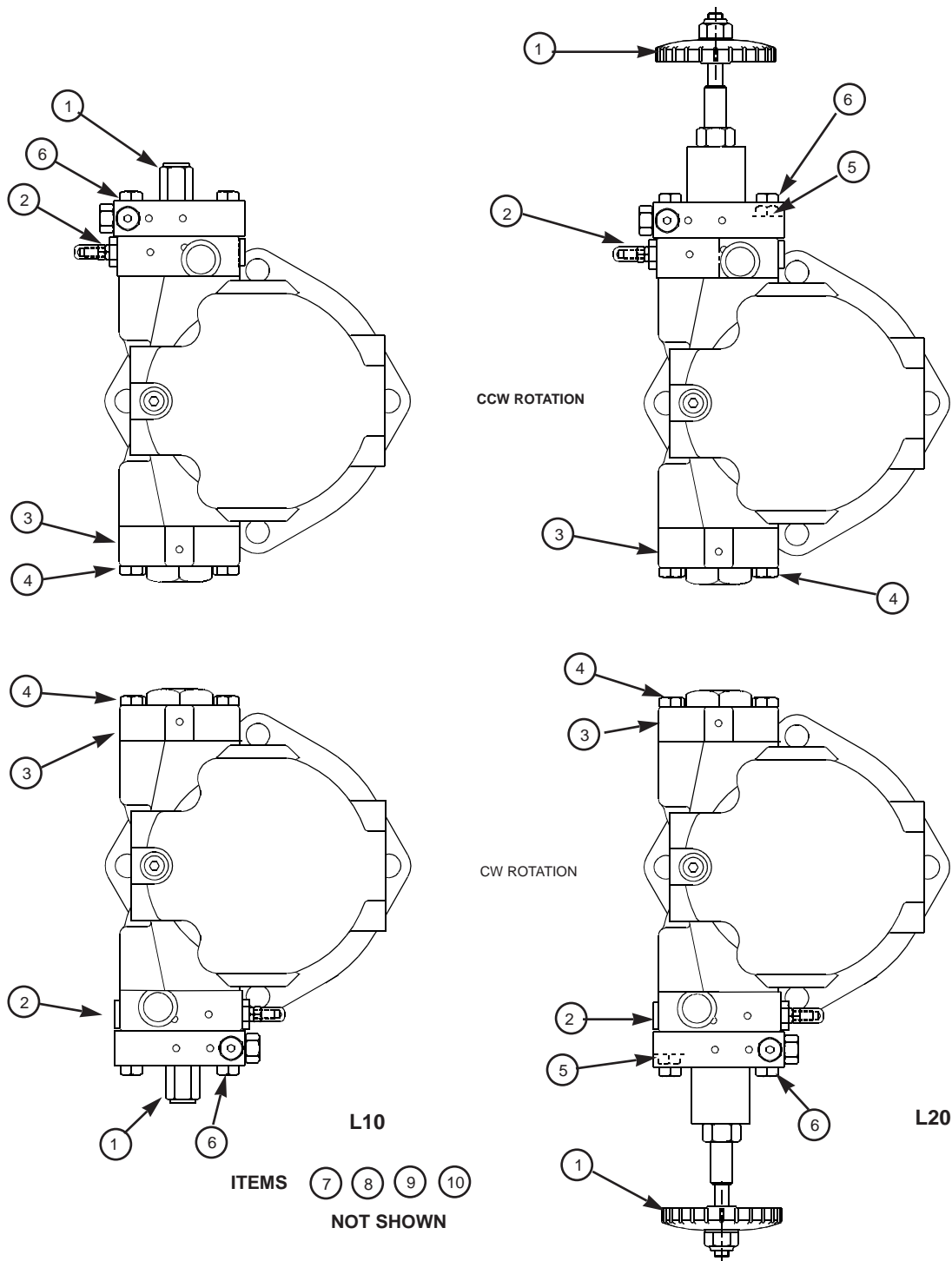


FIGURE 14
ROTARY SERVO

PARTS LIST FOR FIGURE 14

Assembly No., S22-15612

ITEM	DESCRIPTION	PART NO.	QTY.
1	Cap (Figure 6)	S22-15619	1
3	Screw	032-91461	1
5	Pin, Clevis	321-40000	1
6	Spring, Compression	032-92100	1
7	Plug, Avseal	447-00026	1
8	Locknut 8-LSN-S	492-15116	1
9	Cam	032-91515	1
10	Shaft	032-91514	1
11	O-Ring, 90 S-1 ARP 012	691-00012	1
12	Plug, 8HP5N-S	488-35018	1
14	Slide Pin	032-91513	1
15	Spring	225-92105	1
16	Body	S22-15393	1
17	Retaining Ring	356-31050	1
18	O-Ring, 90 S-1 ARP 908	691-00908	2
19	Spring Retainer	032-91516	1
20	Nut	032-91822	1
21	Spool	032-91438	1
23	O-Ring, 70 S-1 ARP 115	671-00115	1
24	Soc. Setscrew, M16 -2 x 80mm	311-50001	1
25	Plug, 12 HP5N-S	488-35014	1
26	O-Ring, 90 S-1 ARP 912	691-00912	1
27	Sleeve	032-91437	1
28	Arm assembly	S22-15520	1
29	O-Ring, 70 S-1 ARP 035	671-00035	1
30	Dowel Pin, 1/8 Dia x 1.50 Lg.	324-20824	1
33	O-Ring, 70 S-1 ARP 904	671-00904	1
34	Dowel Pin, 1/8 x 5/8	324-20810	1
35	O-Ring, 70 S-1 ARP 011	671-00011	2
36	Plate	032-91510	1
37	Screw, HHC, 1/4-20 x 3/4	306-40142	3
38	Plug, SAE-4	488-35061	1
39	Screw, SHC 10-32 x 1/4	312-09041	2
45	O-ring, 70 S-1 ARP 010	671 00010	1



LOAD SENSING CONTROL parts list

ITEM	DESCRIPTION	P080	QTY.	
		PART NO.	L10	L20
1	Max. Vol. Stop (Fig. 1)	S22-15467	1	—
	Max Vol. Handwheel (Fig. 2)	S22-15448	—	1
*2	Load Sensing Control (Fig. 15)	*S22-15625	1	—
	Load Sensing Control	*S22-15637	—	1
3	Buck Up Cap (Fig. 4)	S22-15447	1	1
4	Screw-H.H.C., M12 x 55 mm	363-12205	6	4
5	Screw-H.H.C., M12 x 75 mm	363-12220	—	2
6	Screw-H.H.C., M12 x 85 mm	363-12233	2	2
7	Control Piston	032-91836	1	1
8	O-Ring, 70 S-1 ARP 013	671-00013	2	2
9	O-Ring, 70 S-1 ARP 151	671-00151	2	2
10	Piston Ring	032-91816	2	2

*Includes items 1, 4, 5, 6

LOAD SENSING CONTROL
DISASSEMBLY

1. **See Figure 15** Back off max. volume screw to full displacement. Remove max. volume screw assembly.
2. Remove bolts holding cap to pump.
3. Remove isolation valve (29) from block (28). Remove plug (15) and attached parts. Remove spring (11) and spool (18).
4. Remove adj. plug (2) and attached parts. Remove seal piston (5). Note: a 10-24 screw may be used to assist in pulling the piston. Remove spring (7) and cone (8).
5. Do not remove sleeve in body (1). Sleeve is pressed into cap and finished to size. If sleeve or cap is worn, replace the cap-sleeve assembly (1).
6. Examine seat (10) for wear. Do not remove unless damaged.

ASSEMBLY

1. Install Avseal plugs (9) and orifice (19) in body.
2. Press seat (10) into bore squarely against shoulder in bore.
3. Install spool (18) into bore as shown. Install spring (11) over end of spool. Install O-ring (6) on seal piston (16). Lubricate and install into plug (15). Install O-ring (14) in bore as shown. Install O-ring (13) on plug (15) and install plug into cap. Install screw (3) and nut (4). Cap (17) will be installed after test and final adjustment.
4. Install O-ring (6) on seal piston (5).
5. Lubricate O-ring and install cone (8), spring (7) and seal piston into bore in cap (1), being careful that cone enters seat (10). Install remaining parts in body (1). Torque plug (12) to 60 Nm. Torque plug (35) to 35 Nm.
6. Install O-rings (29-a) and (29-b) on valve (29). Observe that backup ring on inside groove is toward the outside, the one on the middle groove is toward the inside, and the one on the outside groove is toward the outside. Lubricate and install valve (29) in block (28), being careful to avoid damaging the O-rings. Torque to 68 Nm.
7. Install O-ring (32) on adapter (36). Install adapter in block (28). Install plug (31) in adapter.
8. Note proper location for cap on pump. Install O-rings on interface between cap and pump control pad. Install O-rings (26) in block (28).
9. Install block (28) on cover (1) with M24 x 85 mm lg mounting bolts. Install on pump control pad, guiding the control piston into the bore.
10. Install maximum volume stop. Torque mounting bolts to 102 Nm.

TEST AND ADJUSTMENT

Connect pump to a circuit with system flow metered by a needle valve or suitable metering valve. Connect load sensing line downstream of the metering valve. Connect gage to pump output, and to load sensing line, capable of measuring 20,7 bar pressure difference at 345 bar.

Connect a relief valve downstream of the metering valve, and a flowmeter to measure pump flow.

1. Adjust maximum volume stop to full displacement by backing off stop till there is no contact with the control piston.
2. Turn compensator adjustment screw (25) CCW until there is no contact with spring, then adjust 1/2 turn CW after contact is made with spring.
3. Turn differential adjustment screw (3) CCW until there is no contact with spring, then adjust 1/2 turn CW after contact is made with spring.
4. Open metering valve and set relief valve at 35 bar.
5. Start prime mover. Pump should be at full displacement at 35 bar.
6. Increase system relief valve until compensator de-strokes pump to zero displacement. Set compensator to 103 bar.
7. Close the metering valve. Check the pressure difference from pump output to load sensing line. Using the differential adjustment, set this pressure difference to 24 ± 1.7 bar or shop order requirement.
8. Set the compensator to 207 bar, and 345 bar. At each condition, increase the system pressure until the pump fully de-strokes. At no time should the system pressure vary more than 10,3 bar from the compensator setting. The control should be steady and stable at all conditions.
9. Open the metering valve till pump reaches full flow at 69 bar. Reduce flow by 38 L/m. Raise the relief valve setting till the pump compensates at 345 bar. Reduce relief valve setting 14 bar. Flow to return to previous value ± 7.6 L/m.
10. Check pressure differential at 69, 138, and 207 bar $\pm 6,9$ bar. Pressure differential to remain the same as in (7) above.
11. Set the flow to 38 l/m at 69 bar. Observe flow as pressure is varied from 34,5 bar to 331 bar. Flow shall not vary by more than $\pm 7,6$ l/m).
12. Set load relief valve at 138 bar. Check pressure differential at 38 and 114 $\pm 7,6$ l/m. Pressure differential shall be the same as in (7) above.
13. Set compensator adjustment to the required setting, or 345 bar if not otherwise noted. Install cap on differential adjustment.

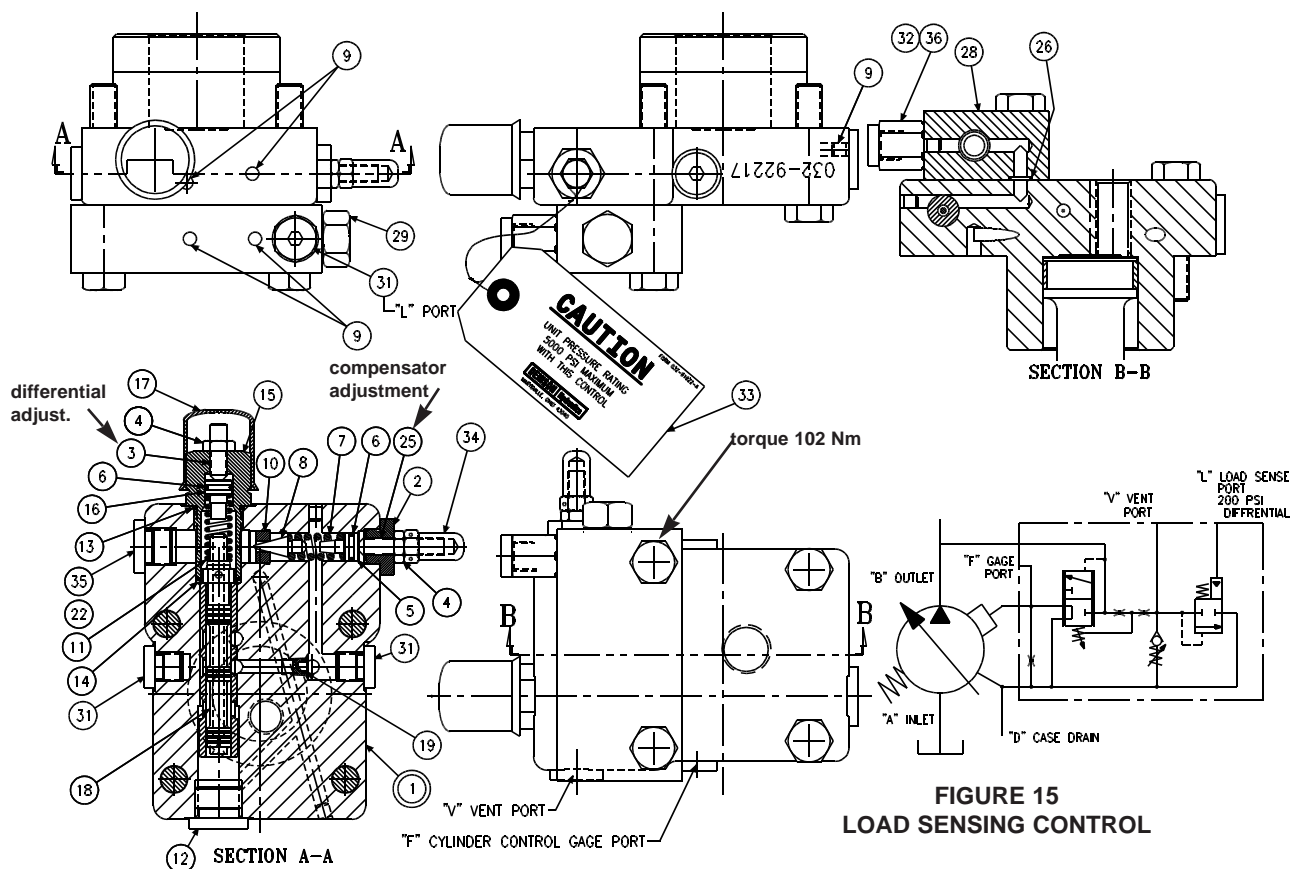


FIGURE 15
LOAD SENSING CONTROL

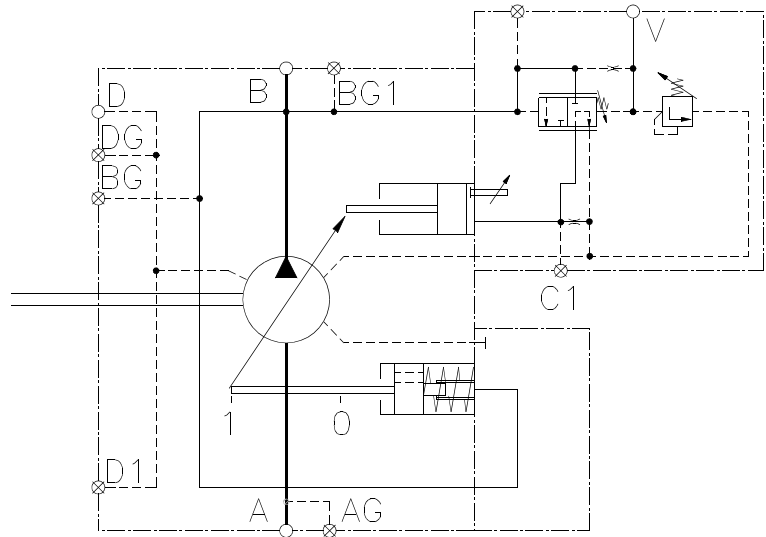
PARTS LIST FOR FIGURE 15

Code L10, S22-15625

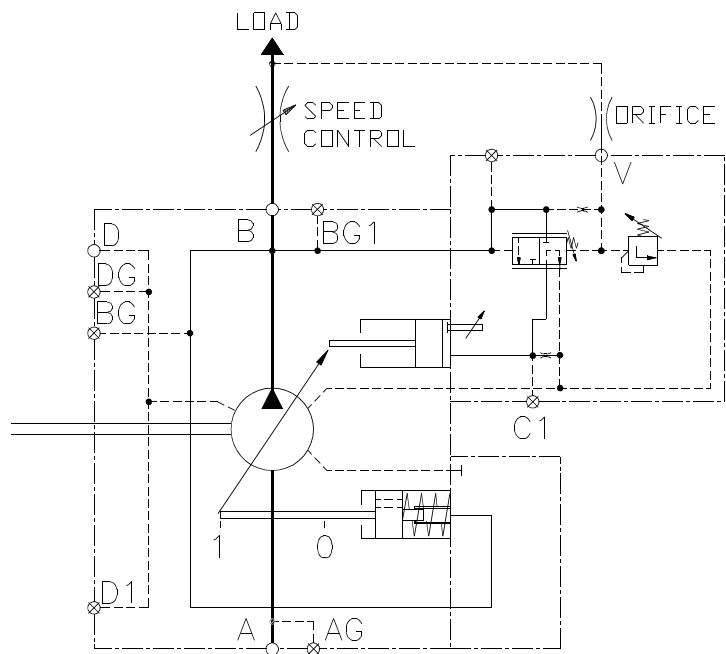
Code L20, S22-15637

ITEM	DESCRIPTION	PART NO.	QTY.
1	Cap-Sleeve Assembly	S22-15609	1
2	Adj. Plug	032-91814	1
3	Soc. Setscrew	312-13160	1
4	Nut, 5/16-24	335-13100	2
5	Seal Piston	031-59367	1
6	O-Ring, 90 S-1 ARP 012	691-00012	2
7	Spring	032-91798	1
8	Cone	036-12288	1
9	Avseal Plug	447-00026	5
10	Seat	036-11692	1
11	Spring	033-71086	1
12	Plug BSPP 1/2	447-01008	1
13	O-Ring, 90 S-1 ARP 910	691-00910	1
14	O-Ring, 90 S-1 ARP 017	691-00017	1
15	Plug	031-57368	1
16	Seal Piston	032-91305	1
17	Cap	449-00612	1
18	Spool	032-59482	1
19	Orifice Plug	033-25528	1
25	Soc. Setscrew 5/16-24 x 1-1/4	312-13180	1
26	O-Ring, 70 S-1 ARP 011	671-00011	2
28	Body-Valve	032-91620	1
29	Isolation Valve	517-00063	1
29-A	O-Ring 90 S-1 ARP 017	691-00017	2
29-B	O-Ring 90 S-1 ARP 015	691-00015	1
31	Plug, BSPP 1/4	447-01004	3
32	O-Ring, 90 S-1 ARP 904	691-00904	1
33	Tag, Caution	032-91622	1
34	Nut, Acorn	036-33474	1
35	Plug, BSPP 3/8	447-00032	1
36	Adapter	032-91507	1

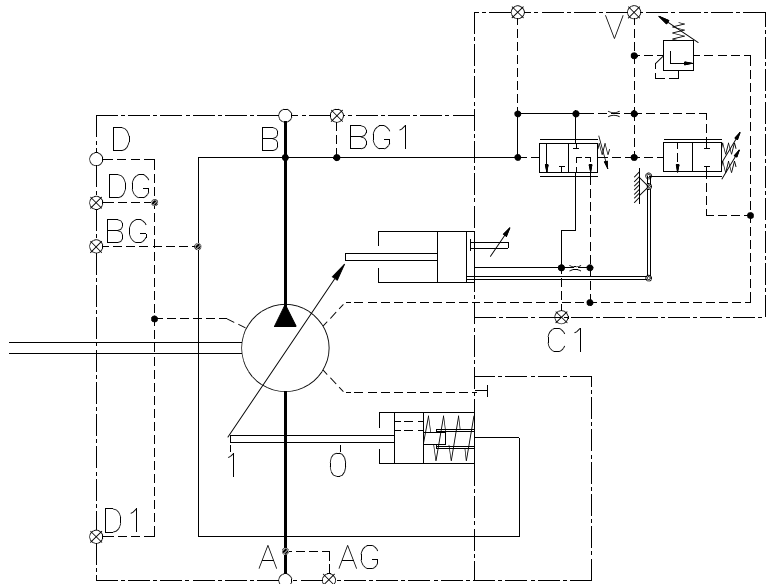
HYDRAULIC CIRCUIT PRESSURE COMPENSATOR (C10)



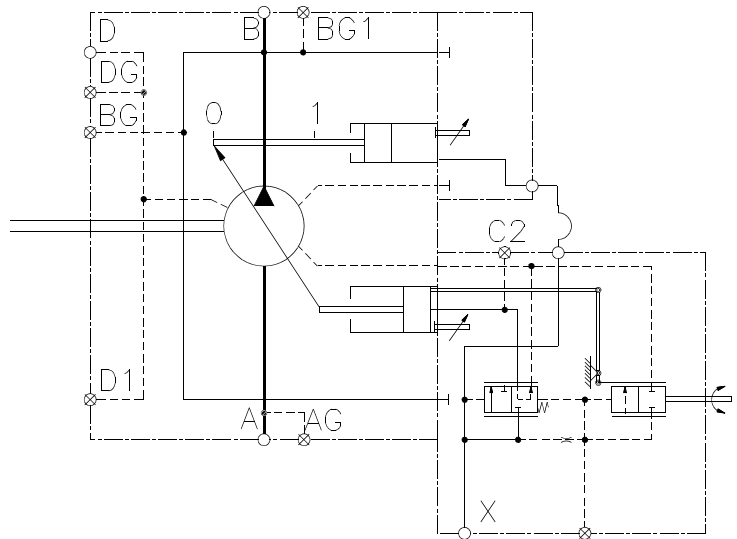
HYDRAULIC CIRCUIT PRESSURE COMPENSATOR, LOAD SENSING CONFIGURA- TION (C10)



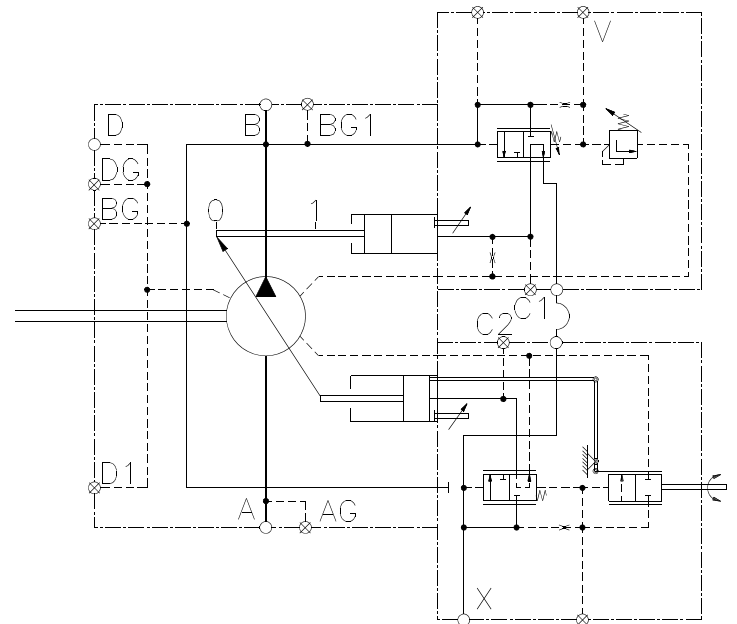
HYDRAULIC CIRCUIT TORQUE LIMITER (J10 & K10)



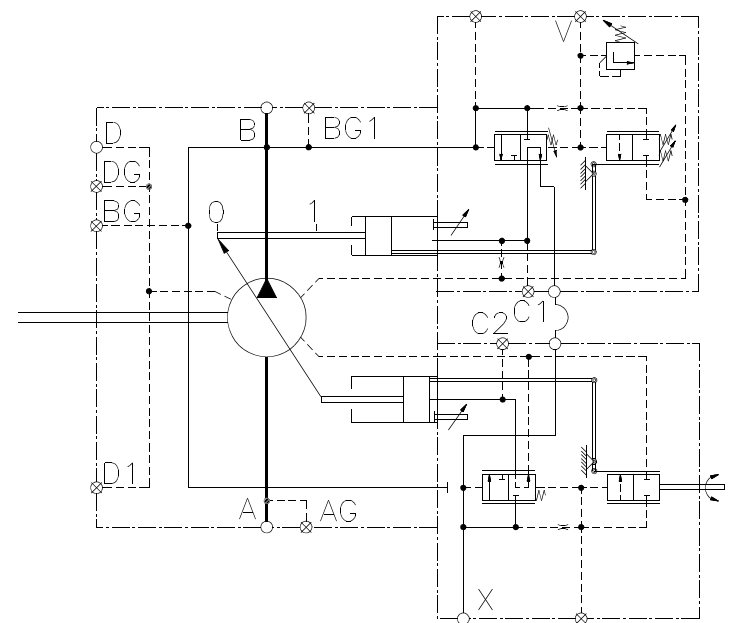
HYDRAULIC CIRCUIT ROTARY SERVO (R10)



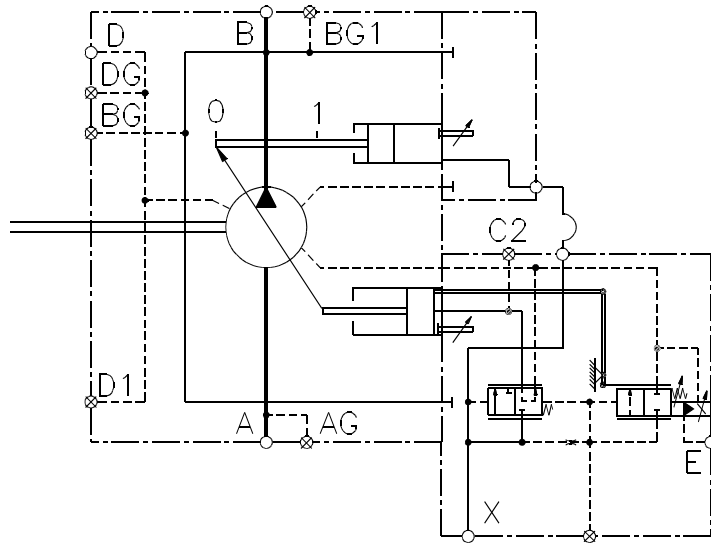
HYDRAULIC CIRCUIT ROTARY SERVO WITH COMPENSATOR OVERRIDE (R1P)



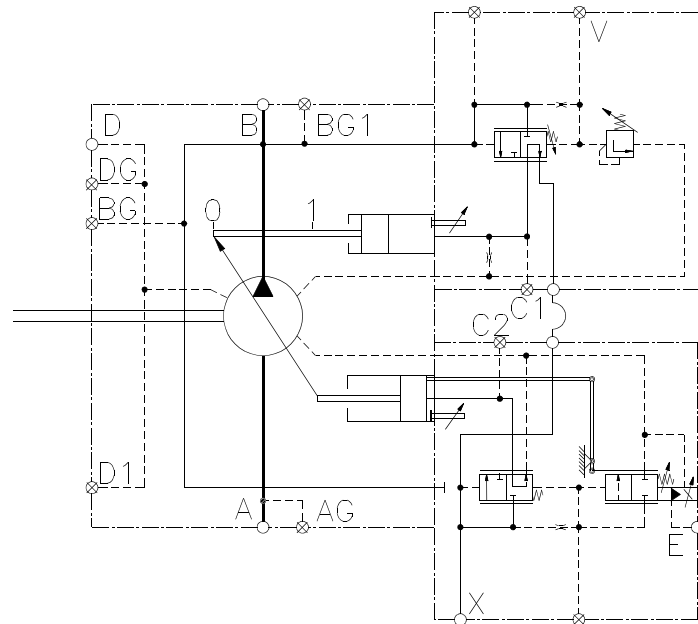
HYDRAULIC CIRCUIT ROTARY SERVO WITH TORQUE LIMITER OVERRIDE (R1J & R1K)



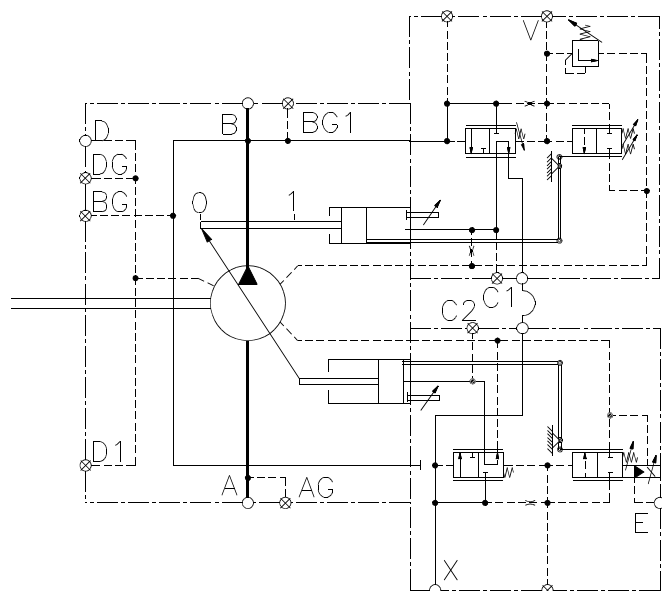
**HYDRAULIC CIRCUIT
ELECTRIC STROKER
(E10)**



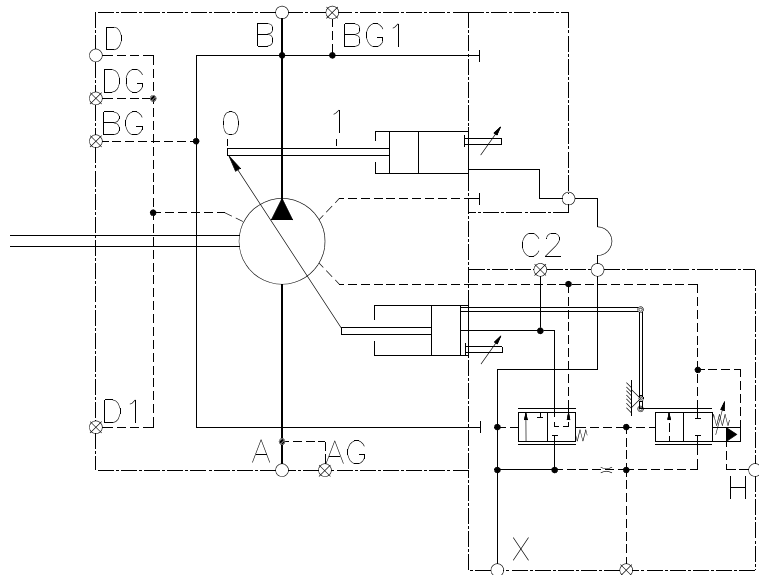
**HYDRAULIC CIRCUIT
ELECTRIC STROKER WITH
COMPENSATOR OVERRIDE
(E1P)**



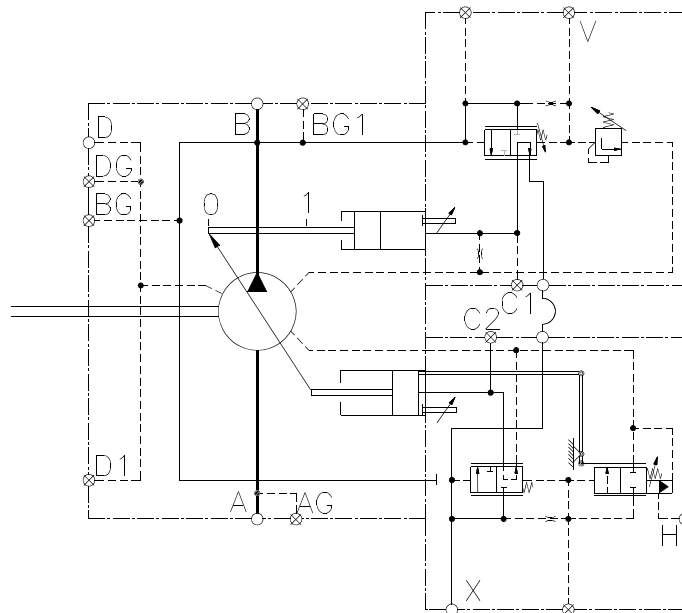
**HYDRAULIC CIRCUIT
ELECTRIC STROKER WITH
TORQUE LIMITER OVERRIDE
(E1J & E1K)**



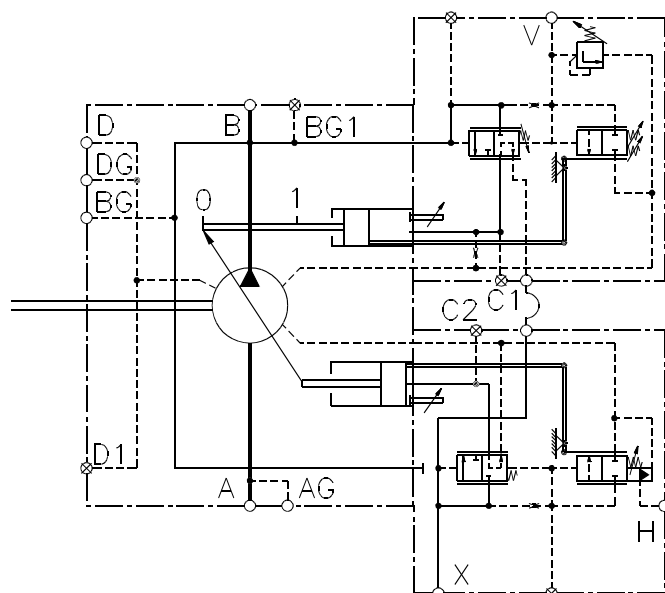
**HYDRAULIC CIRCUIT
HYDRAULIC STROKER
(H10)**



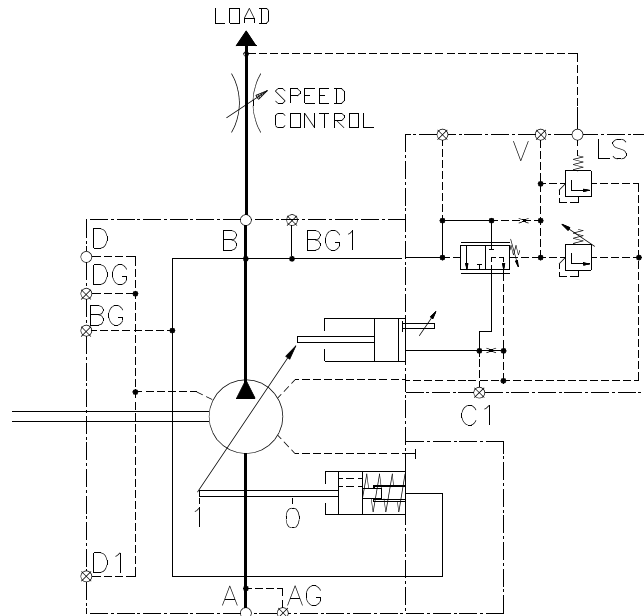
**HYDRAULIC CIRCUIT
HYDRAULIC STROKER WITH
COMPENSATOR OVERRIDE
(H1P)**



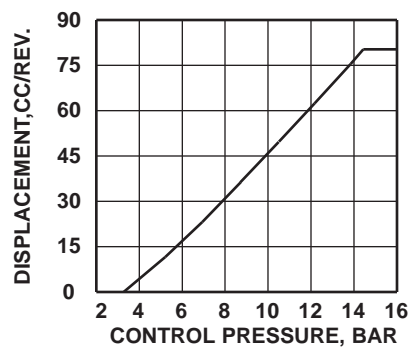
**HYDRAULIC CIRCUIT
HYDRAULIC STROKER WITH
TORQUE LIMITER OVERRIDE
(H1J & H1K)**



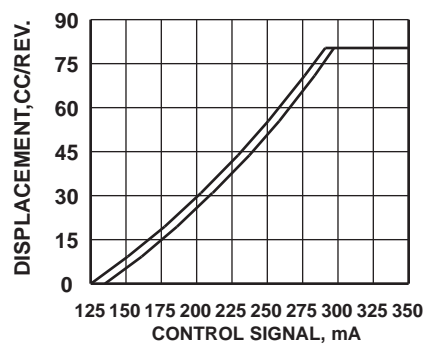
HYDRAULIC CIRCUIT LOAD SENSING CONTROL (L10)



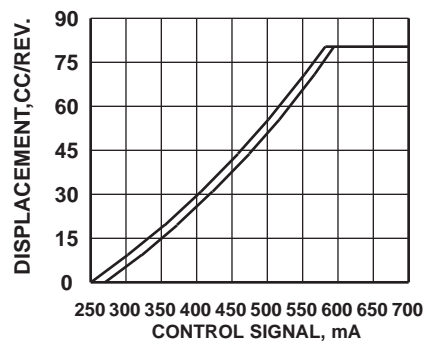
HYDRAULIC STROKER PERFORMANCE



ELECTRIC STROKER PERFORMANCE, 24 V. COIL



ELECTRIC STROKER PERFORMANCE, 12 V. COIL



- COMPENSATOR WITH ADJ. MAX. VOLUME SCREW STOP-C1*
OR COMPENSATOR WITH HANDWHEEL ADJ. MAX. VOLUME STOP-C2*

3/8-16 UNC X TAPPED HOLE .65 (16,5) DEEP

6.23 (158,2)

8.18 (207,8)

COMPENSATOR ADJUSTMENT

COMPENSATOR VENT CONNECTION SAE-8 STRAIGHT THREAD

OPTIONAL KEYED SHAFT (COUPLING DRIVE)

VIEW A-A

OPTIONAL REAR ADAPTERS
SEE PAGES 42, 43 & 44

STANDARD ADJ. MAXIMUM VOL. STOP

NO REAR DRIVE

ALTERNATE HANDWHEEL ADJ. MAXIMUM VOLUME STOP

COMPENSATOR VENT CONNECTION
SAE-8 STRAIGHT THREAD

CONTROL CYL. GAGE PORT
SAE-4 STRAIGHT THREAD

CASE DRAIN "D1"
SAE-12 STR. THD.

INLET GAGE CONNECTION
SAE-4 STRAIGHT THREAD

INLET PORT
SAE-2.50 DIA. 3000 PSI (63.5) (209 BARS)
4-BOLT FLG. CONN.

COMPENSATOR ADJUSTMENT

OPTIONAL REAR ADAPTERS
SEE PAGES 42, 43 & 44

SAE INVOLUTE SPLINE DATA J498-B 1969
FLAT ROOT SIDE FIT EXTERNAL CLASS-1
8/16 PITCH
30 DEGREE PRESSURE ANGLE
13 TEETH
1.7210-1.7160 MAJOR DIA.
(43,713-43,586)

"D" CASE DRAIN
SAE-12 STR. THD.

OUTLET GAGE CONNECTION
SAE-4 STR. THD.

OUTLET PORT
SAE-1.25 DIA. 7250 PSI (31.8) (505 BARS)
4-BOLT FLG. CONN.

CASE BLEED/GAGE CONNECTION
SAE-4 STR. THD.

1/2-13 UNC X 1.19 DP 4 PLACES

1.75 (44.5)

1.00 (25.4)

2.00 (50.8)

11.60 (294.6)

4.37 (111.1)

3.50 (88.9)

1.75 (44.5)

4.37 (111.1)

6.000 (152.40) DIA.

5.998 (152.35)

1.943 (49.35)

1.750 (44.45) DIA.

1.748 (44.40)

30°

.09 (2.3)

.4375 (11.112) SQUARE KEY x 1.75 (44.4) LG.

.4355 (11.062)

2.97 (75.4) DIA.

2.90 (73.7)

1.09 (27.7)

2.97 (75.4) DIA.

2.90 (73.7)

1.62 (41.0) SPLINE LENGTH

49 (12.5)

13.40 (340.4)

13.58 (344.9)

11.36 (288.5)

7.00 (177.7)

2.56 (65.0)

2.97 (75.4) DIA.

2.90 (73.7)

1.25 (31.8)

.63 (15.9)

1.31 (33.3)

2.63 (66.7)

4.11 (104.4)

4.11 (104.4)

8.18 (207.8)

6.23 (158.2)

5.25 (133.4)

10.50 (266.7) SQUARE

6.29 (159.9)

9.00 (228.6) SQUARE

4.50 (114.3)

.81 (20.6) DIA. 4 PLACES

13.44 (341.3) MAX.

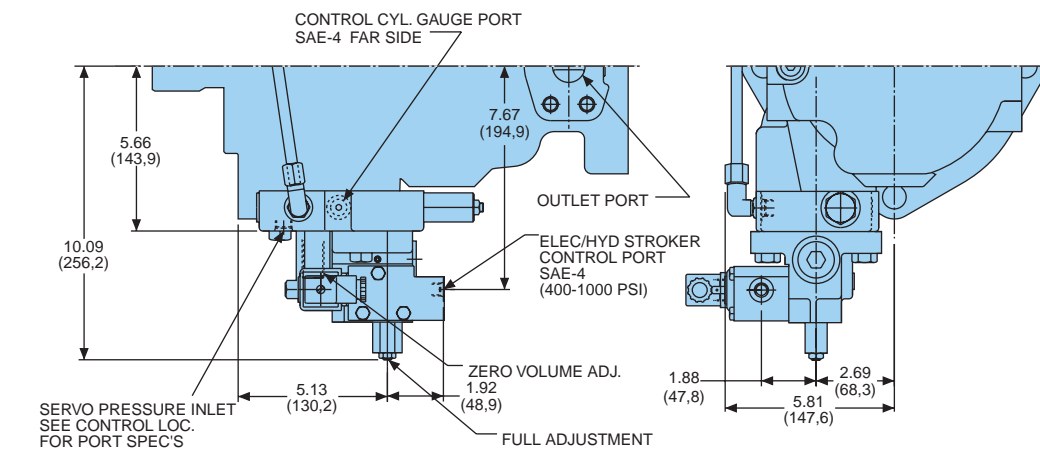
A

A

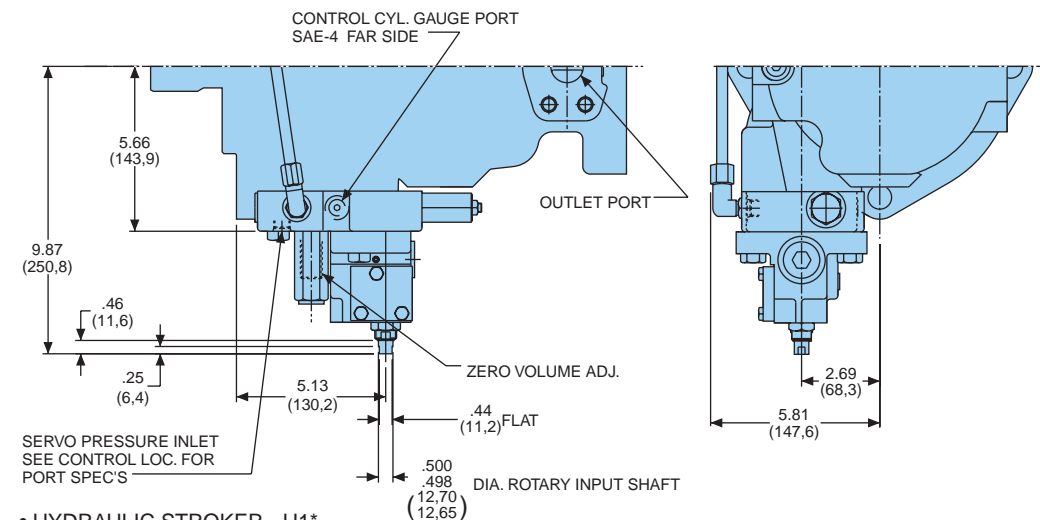
www.comoso.com

PRIMARY SERVO CONTROLS
(CCW ROTATION SHOWN)

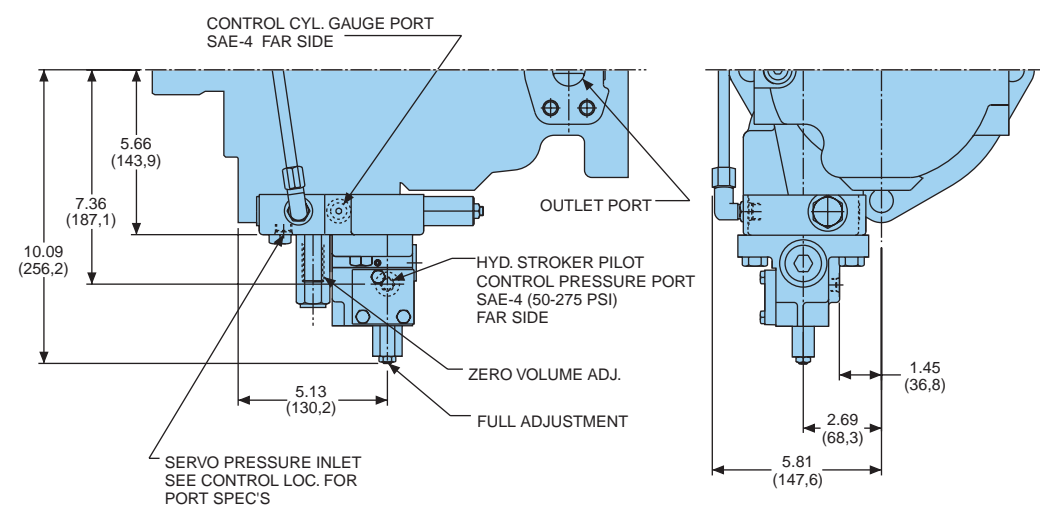
• ELECTRO-HYDRAULIC STROKER - E1*



• ROTARY SERVO - R1*

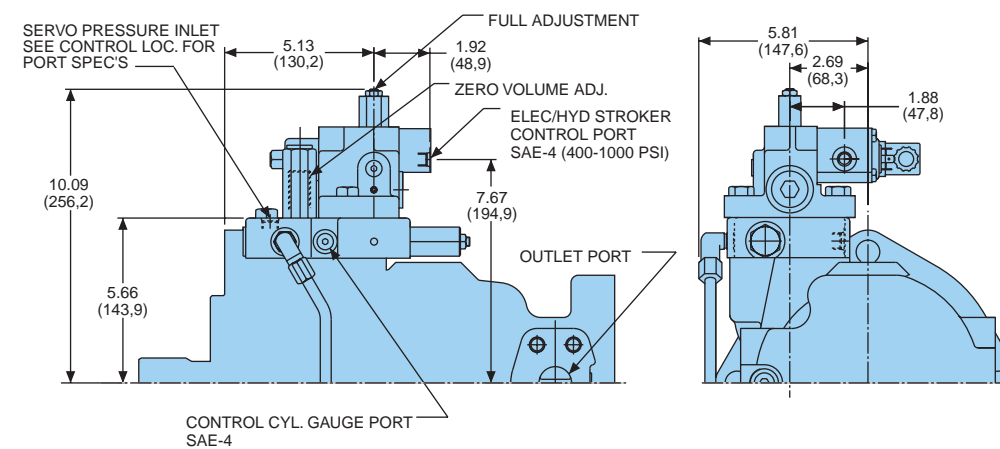


• HYDRAULIC STROKER - H1*

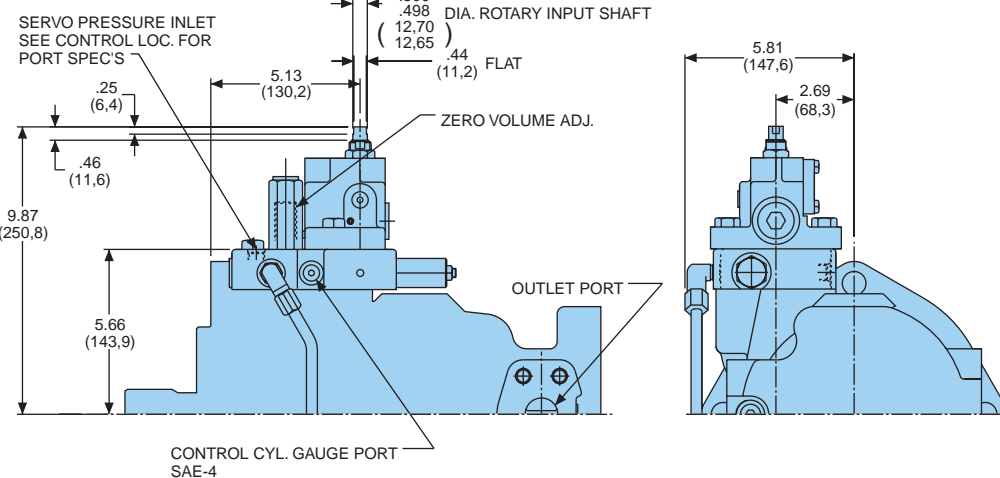


PRIMARY SERVO CONTROLS
(CW ROTATION SHOWN)

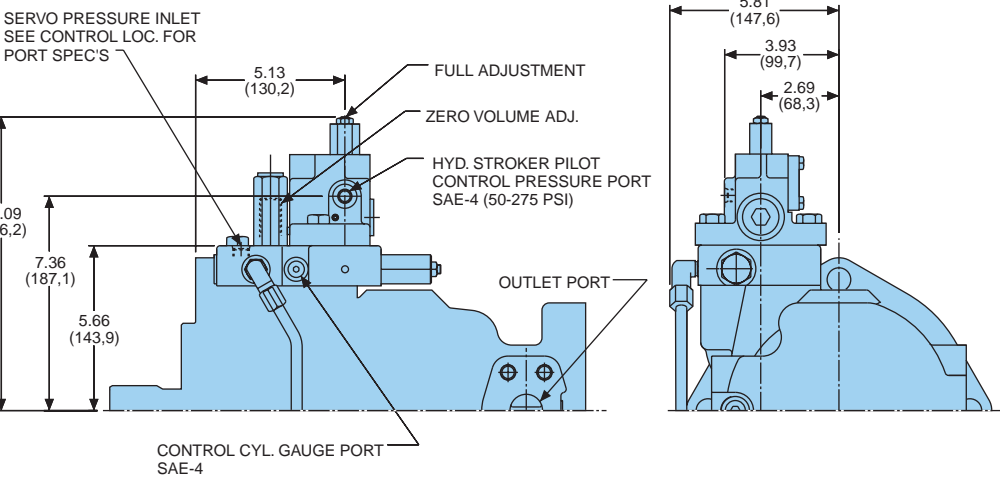
• ELECTRO-HYDRAULIC STROKER - E1*



• ROTARY SERVO - R1*

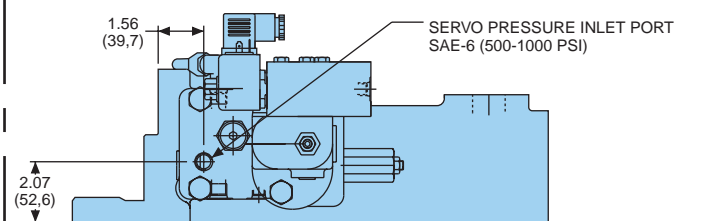


• HYDRAULIC STROKER - H1*

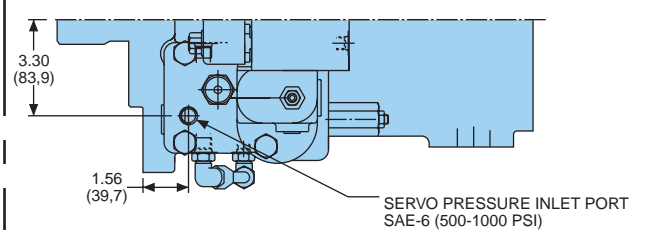


SERVO PRESSURE INLET

• CCW

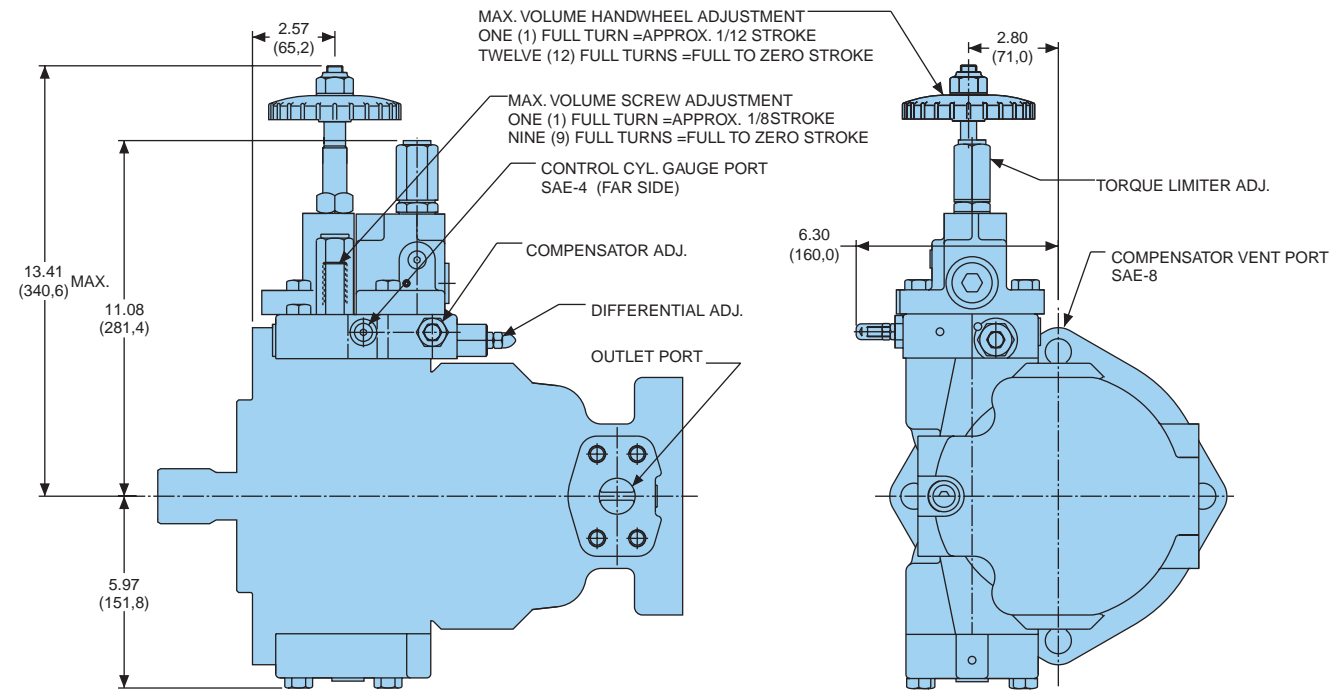


• CW

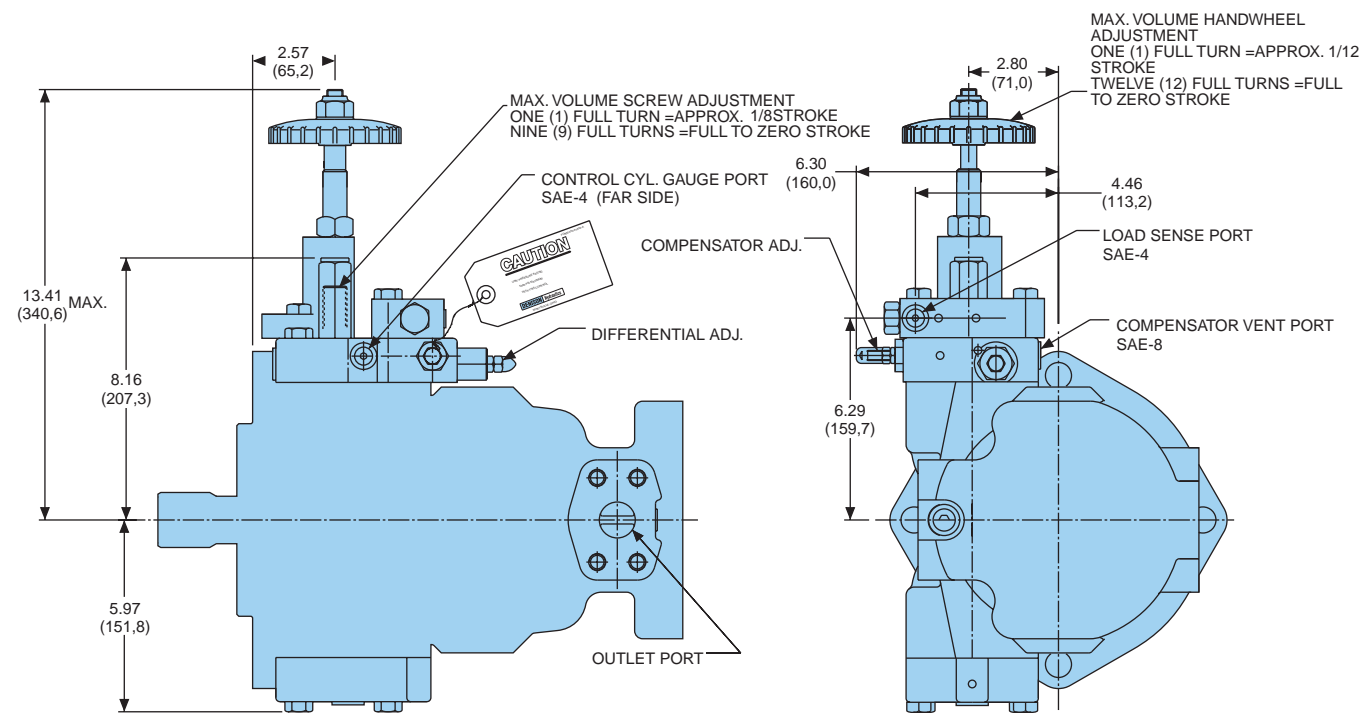


PRIMARY SERVO CONTROLS
(CCW ROTATION SHOWN)

- TORQUE LIMITER WITH MAX. VOLUME SCREW ADJ. "J10" AND TORQUE LIMITER WITH HANDWHEEL MAX. VOLUME ADJ. "J20"

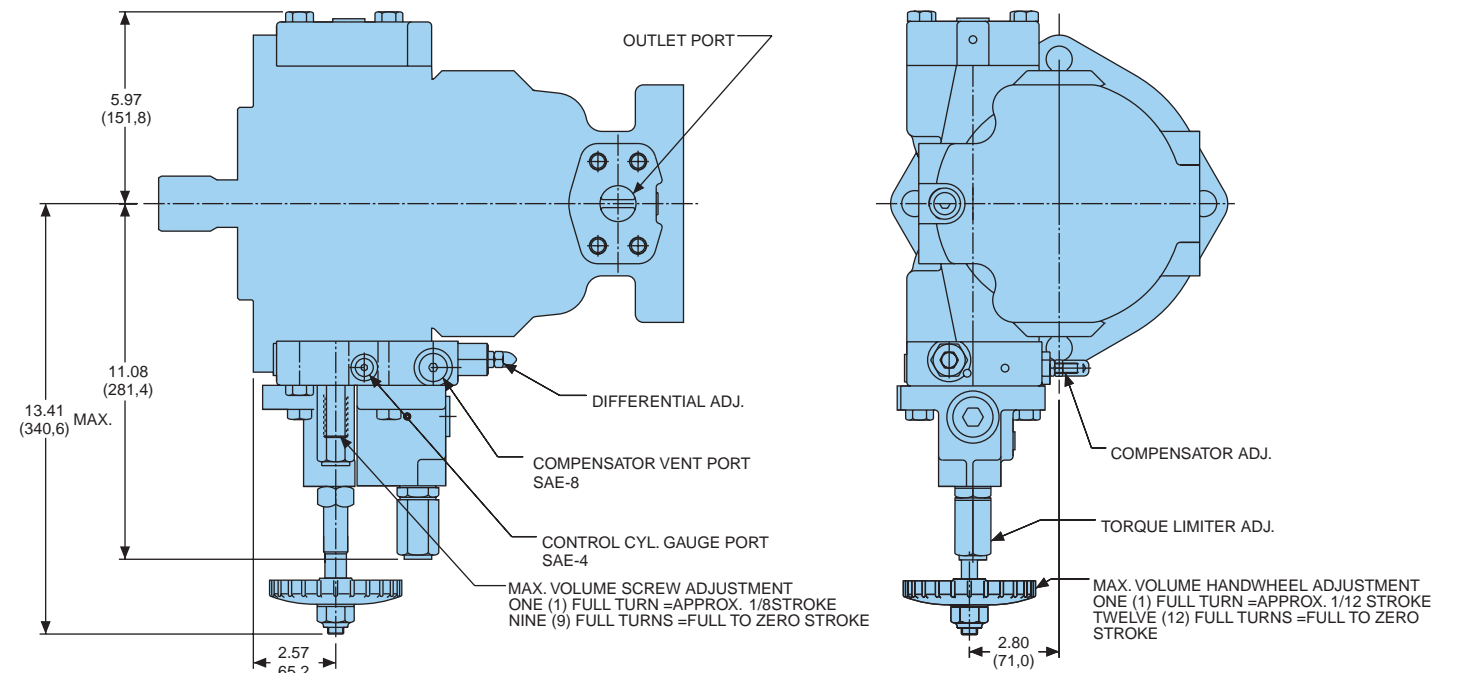


- LOAD SENSING WITH MAX. VOLUME SCREW ADJ. "L10" AND LOAD SENSING WITH HANDWHEEL MAX. VOLUME ADJ. "L20"

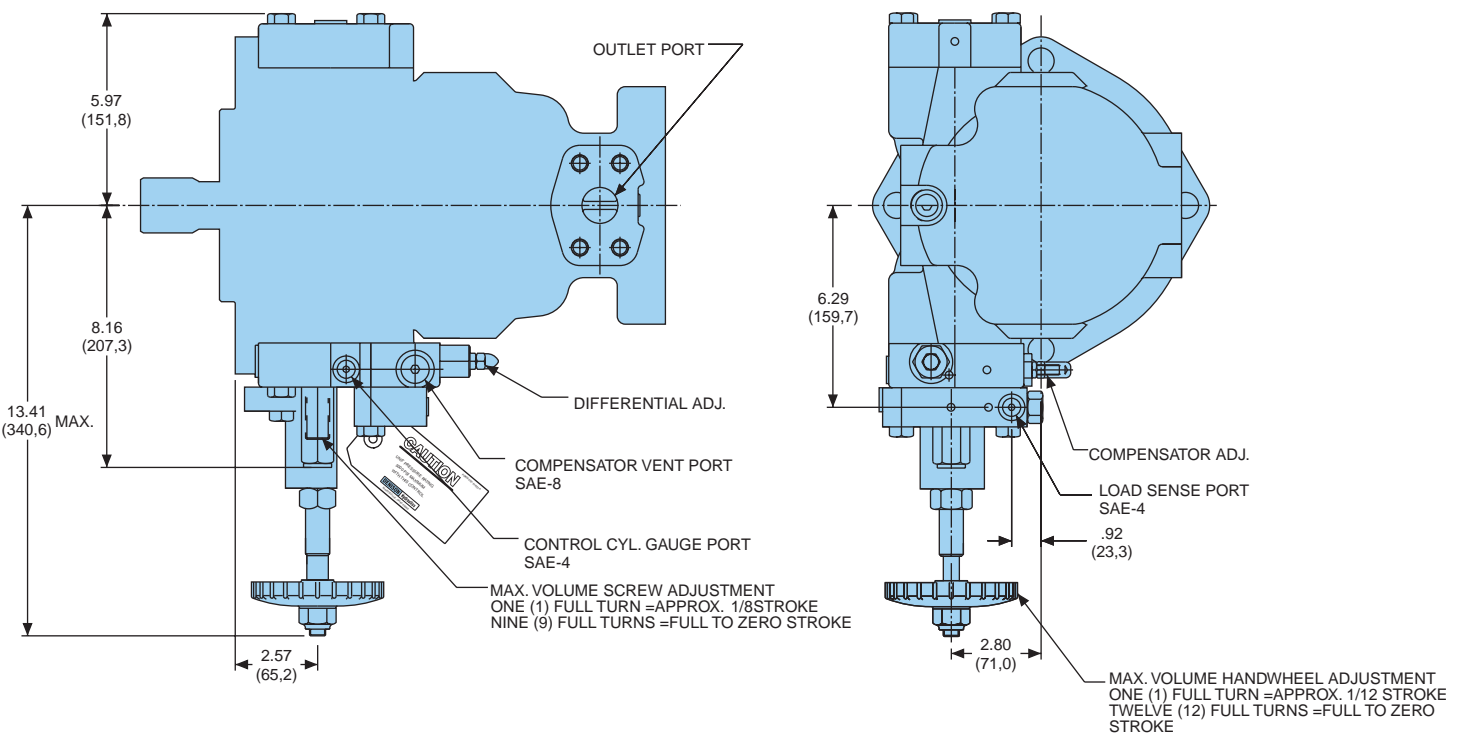


PRIMARY SERVO CONTROLS
(CW ROTATION SHOWN)

- TORQUE LIMITER WITH MAX. VOLUME SCREW ADJ. "J10" AND TORQUE LIMITER WITH HANDWHEEL MAX. VOLUME ADJ. "J20"

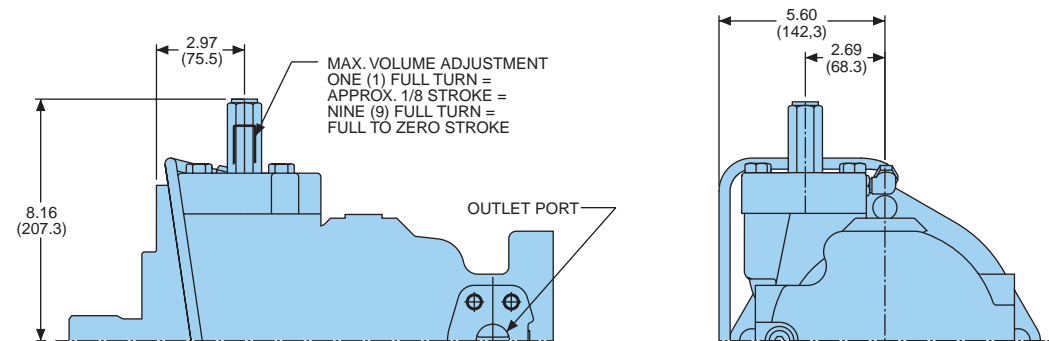


- LOAD SENSING WITH MAX. VOLUME SCREW ADJ. "L10" AND LOAD SENSING WITH HANDWHEEL MAX. VOLUME ADJ. "L20"

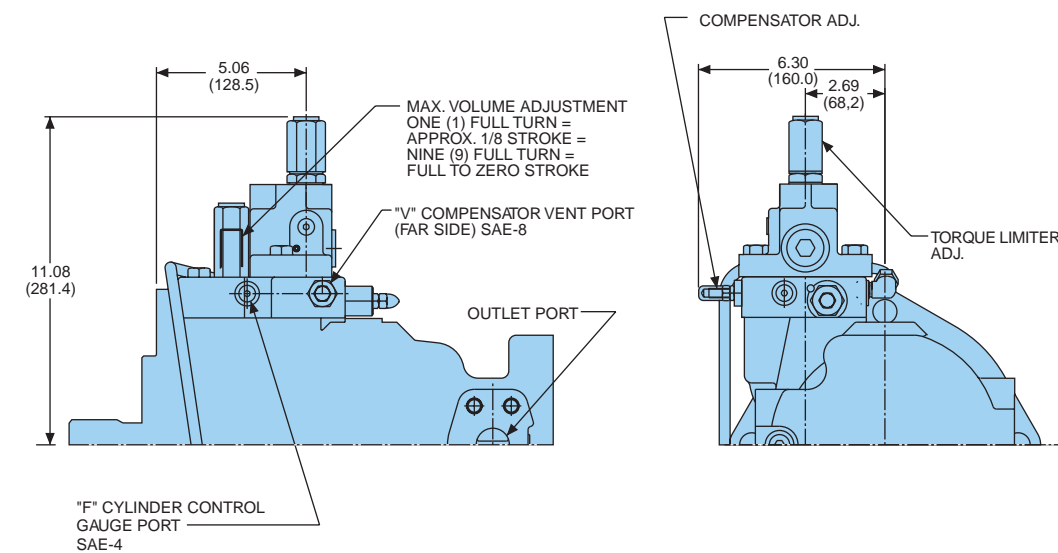


SECONDARY SERVO CONTROLS FOR "E", "H", & "R" PRIMARY CONTROLS (CCW ROTATION SHOWN)

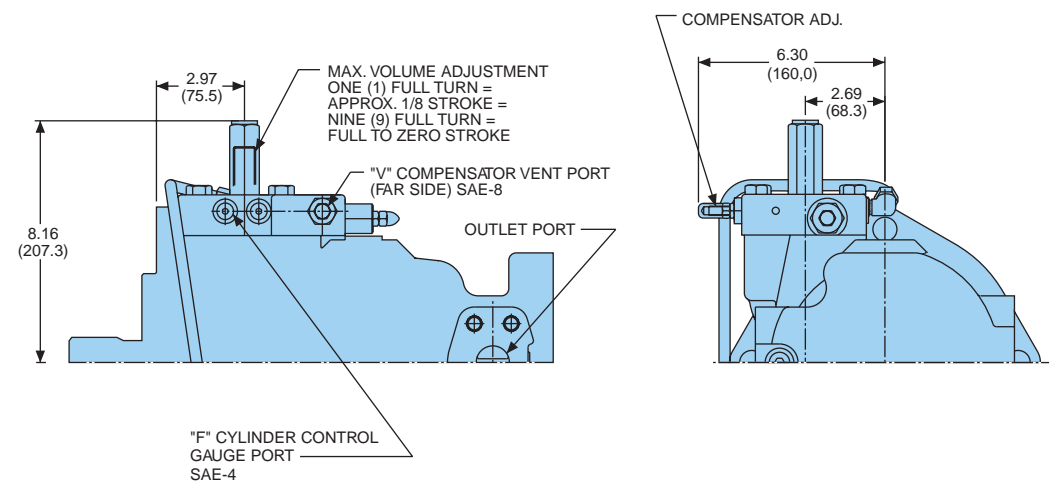
• BUCKDOWN CONTROL CAP "***O" FOR "E1", "H1", & "R1" CONTROLS



• TORQUE LIMITER OVERRIDE CONTROL "***J" FOR "E1", "H1", & "R1" CONTROLS

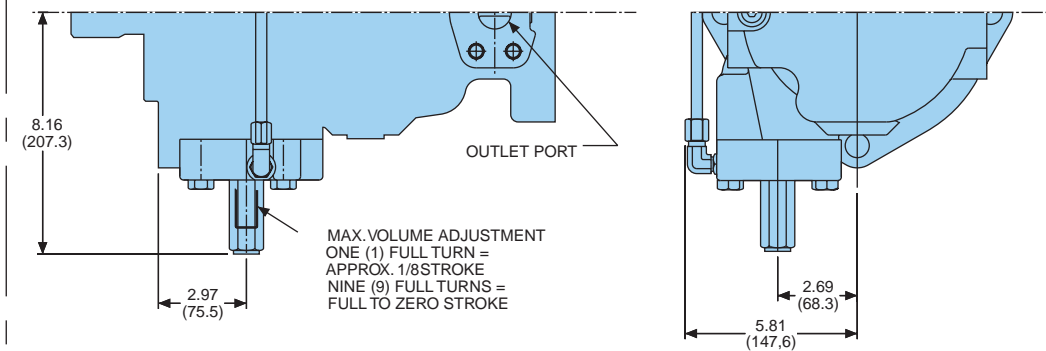


• COMPENSATOR OVERRIDE CONTROL "***P" FOR "E1", "H1", & "R1" CONTROLS

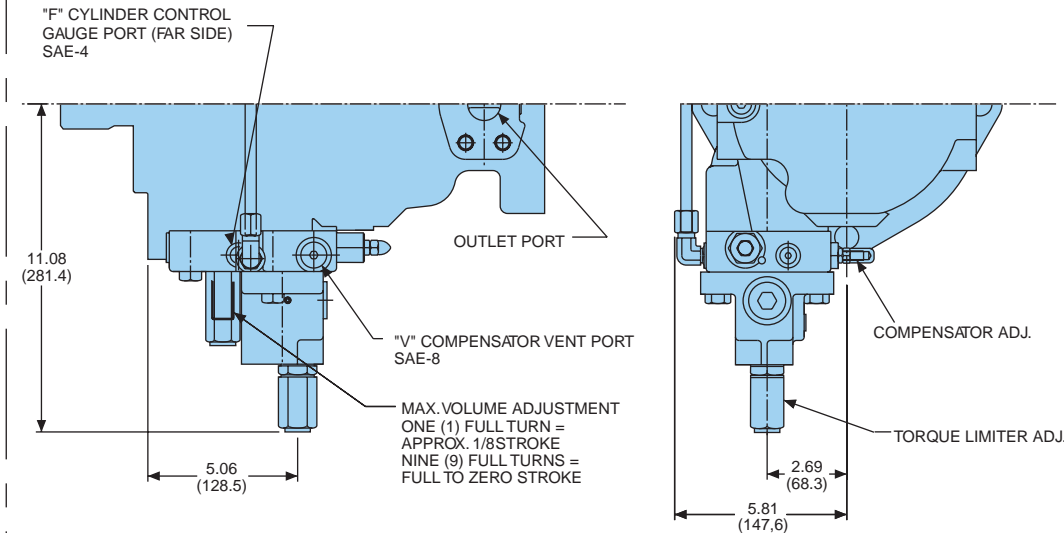


SECONDARY SERVO CONTROLS FOR "E", "H", & "R" PRIMARY CONTROLS (CW ROTATION SHOWN)

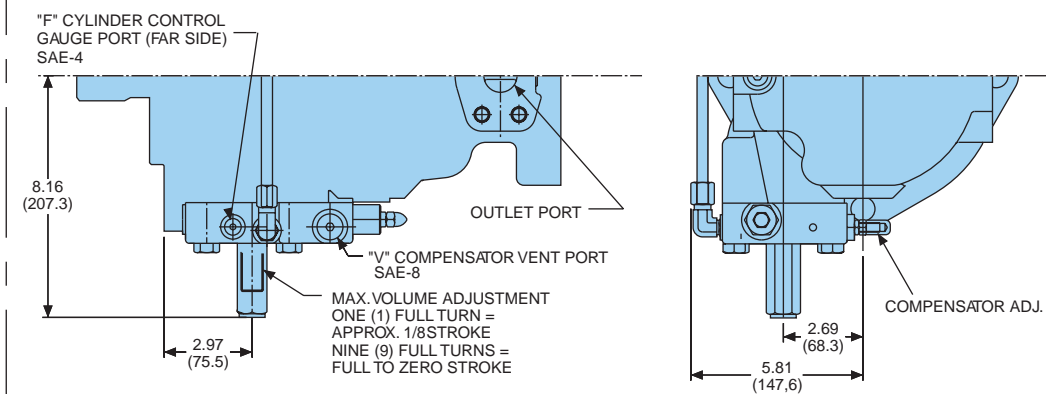
• BUCKDOWN CONTROL CAP "***O" FOR "E1", "H1", & "R1" CONTROLS



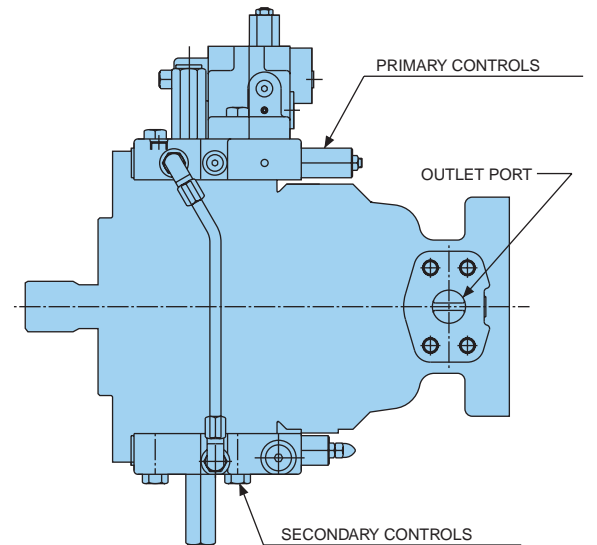
• TORQUE LIMITER OVERRIDE CONTROL "***J" FOR "E1", "H1", & "R1" CONTROLS



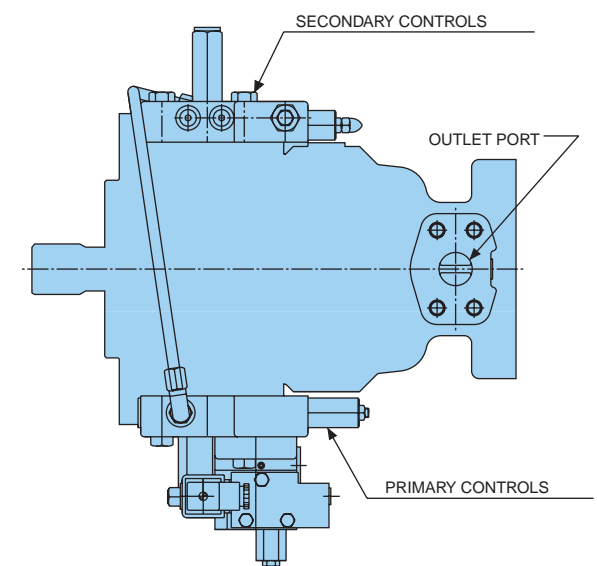
• COMPENSATOR OVERRIDE CONTROL "***P" FOR "E1", "H1", & "R1" CONTROLS



• CONTROL LOCATION FOR CW ROTATION



• CONTROL LOCATION FOR CCW ROTATION



P080 - * * * * - C 1 0 - *

Secondary control options

O-None
J-Low Torque Limiter Override (90 - 170 Nm)
K-High Torque Limiter Override (over 170 Nm)
P-Compensator Override

Pre-tested control assembly

S22-15613
 S22-15615
 S22-15632
 S22-15614

Primary control options

1-Maximum volume screw
2-Handwheel (available on Compensator, Torque limiter and Load sensing controls)

control assembly

S22-15467
 S22-15448

Primary controls

C-Pressure Compensator
E-Electric Stroker
H-Hydraulic Stroker
J-Low Torque Limiter (90 - 170 Nm)
K-High Torque Limiter (over 170 Nm)
L-Load Sensing
R-Rotary Servo

Pre-tested control assembly

C1*, S22-15623	C2*, S22-15633
E1*, S22-15610	
H1*, S22-15611	
J1*, S22-15624	J2*, S22-15634
K1*, S22-15631	K2*, S22-15636
L1*, S22-15625	L2*, S22-15637
R1*, S22-15612	

Available control combinations

C10, C20
 E10, E1J, E1K, E1P
 H10, H1J, H1K, H1P
 J10, J20
 K10, K20
 L10, L20
 R10, R1J, R1K, R1P

DEFINITION & UNIT

displacement	$\text{in}^3/\text{rev} \times 16,387 = \text{cm}^3/\text{rev}$	$\text{cm}^3/\text{rev} \times 0,06102 = \text{in}^3/\text{rev}$
flow	$\text{gpm} \times 3,78 = \text{l/min}$	$\text{l/min} \times 0,2642 = \text{gpm}$
power	$\text{hp} \times 0,7457 = \text{kW}$	$\text{kW} \times 1,341 = \text{hp}$
torque	$\text{lb-ft} \times 1,3567 = \text{Nm}$	$\text{Nm} \times 0,7376 = \text{lb-ft}$
pressure	$\text{lbs/in}^2 (\text{psi}) \times 0,06895 = \text{bar}$ $\text{lbs/in}^2 (\text{psi}) \times 6,895 = \text{kPa}$	$\text{bar} \times 14,50 = \text{lbs/in}^2 (\text{psi})$ $\text{kPa} \times 0,1450 = \text{lbs/in}^2 (\text{psi})$
weight	$\text{lb} \times 0,4536 = \text{kg}$	$\text{kg} \times 2,205 = \text{lbs}$
force	$\text{lb} \times 4,448 = \text{N}$	$\text{N} \times 0,2248 = \text{lbs}$
volume	$\text{in}^3 \times 16,387 = \text{cm}^3$	$\text{cm}^3 \times 0,06102 = \text{in}^3$
area	$\text{in}^2 \times 6,452 = \text{cm}^2$	$\text{cm}^2 \times 0,1550 = \text{in}^2$
length	$\text{in} \times 25,4 = \text{mm}$	$\text{mm} \times 0,03937 = \text{in}$
temperature	$\text{degree F}-32 = \text{°C}$ 1,8	$1,8 \times \text{°C}+32 = \text{°F}$
viscosity	$\text{cSt} \times 1,0 = \text{mm}^2/\text{sec}$ $(\text{SSU}-14) \approx \text{cSt}$ 4,25	$\text{mm}^2/\text{sec} \times 1,0 = \text{cSt}$ $\text{cSt} \times 4,25 + 14 \approx \text{SSU}$

FLUID POWER FORMULAS

Pump input torque	lbs. in.	$\frac{\text{pressure}(\text{psi}) \times \text{displacement} (\text{in}^3/\text{rev})}{2\pi \times \text{mech. eff.}}$
Pump input power	hp	$\frac{\text{rpm} \times (\text{in}^3/\text{rev}) \times (\text{psi})}{395934 \times \text{overall eff.}}$
Pump output flow	U.S. gpm	$\frac{\text{rpm} \times (\text{in}^3/\text{rev}) \times \text{volumetric eff.}}{231}$
Fluid motor speed	rpm	$\frac{231 \times \text{flow rate}(\text{U.S. gpm}) \times \text{volumetric eff.}}{\text{displacement} (\text{in}^3/\text{rev})}$
Fluid motor torque	lbs. in.	$\frac{\text{pressure}(\text{psi}) \times \text{displacement} (\text{in}^3/\text{rev}) \times \text{mech. eff.}}{2\pi}$
Fluid motor power	hp	$\frac{\text{rpm} \times (\text{in}^3/\text{rev}) \times (\text{psi}) \times \text{overall eff.}}{395934}$
(metric)		
Pump input torque	Nm	$\frac{\text{pressure}(\text{bar}) \times \text{displacement} (\text{cm}^3/\text{rev})}{20\pi \times \text{mech. eff.}}$
Pump input power	kW	$\frac{\text{rpm} \times (\text{cm}^3/\text{rev}) \times (\text{bar})}{600000 \times \text{overall eff.}}$
Pump output flow	Lpm	$\frac{\text{rpm} \times (\text{cm}^3/\text{rev}) \times \text{volumetric eff.}}{1000}$
Fluid motor speed	rpm(min ⁻¹) (tr/mn)	$\frac{1000 \times \text{flow rate} (\text{Lpm}) \times \text{volumetric eff.}}{\text{displacement} (\text{cm}^3/\text{rev})}$
Fluid motor torque	Nm	$\frac{\text{pressure}(\text{bar}) \times \text{displacement} (\text{cm}^3/\text{rev}) \times \text{mech. eff.}}{20\pi}$
Fluid motor power	kW	$\frac{\text{rpm} \times (\text{cm}^3/\text{rev}) \times (\text{bar}) \times \text{overall eff.}}{600000}$

"The product information specifications and descriptions contained in this catalog have been compiled for the use and convenience of our customers from information furnished by the manufacturer, and we cannot and do not accept any responsibility for the accuracy or correctness of any description, calculation, specification or information contained herein. No such description, calculated, specified or information regarding the products being sold has been made part of the basis of the bargain nor has same created or amounted to an express warranty that the products would conform thereto. **We are selling the goods and merchandise illustrated and described in this catalog on an as is basis and disclaim any implied warranty, including any warranty of merchantability or warranty of fitness for any particular purposes whatsoever, with respect to the goods and merchandise sold.** All manufacturer warranties shall be passed on to our customers, but we shall not be responsible for special, indirect, incidental or consequential damages resulting from the use of any of the products or information contained or described in the catalog."

International Distributors**In Europe:**

Cyprus
 Eastern Europe
 The Faroe Islands
 Finland
 Greece
 Iceland
 Norway
 Portugal
 Switzerland
 Turkey

In Africa:

Algeria
 Egypt
 Ivory Coast
 Morocco
 Nigeria
 South Africa
 Togo
 Tunisia

In Middle East:

Iran
 Israel
 Lebanon
 Pakistan
 Qatar
 Saudi Arabia
 Syria
 United Arab Emirates

In Far East:

Indonesia
 Korea
 Malaysia
 New Zealand
 Philippines
 Thailand

Australia

DENISON HYDRAULICS Pty. Ltd.
 41-43 St. Hillers Road
 P.O. Box 192
 Auburn, N.S.W. 2144
 Australia
 Tel. (612) 9646 5200
 Fax (612) 9643 1305

Other sales offices:
 Queensland
 South Wantima Victoria
 Western Australia

Austria

DENISON HYDRAULIK GmbH
 Zweigniederlassung Linz
 Haidbachstraße 69
 A-4061 Pasching
 Austria
 Tel. (43) 7229 4887
 Fax (43) 7229 63092

Benelux

DENISON HYDRAULICS
 BENELUX B. V.
 Pascalstraat 100
 3316 Dordrecht
 Holland
 Tel. (31) 786179 900
 Fax (31) 786175 755

Canada

DENISON HYDRAULICS
 CANADA Inc.
 2320 Bristol Circle, Unit 1
 Oakville, ON L6H 5S2
 Canada
 Tel. (905) 829 5800
 Fax (905) 829 5805

Other sales offices:
 Montreal, QC
 Calgary, AB

Denmark

DENISON HYDRAULIK
 DENMARK A/S
 Industrikroge 2
 DK-2635 Ishøj
 Denmark
 Tel. (45) 4371 15 00
 Fax (45) 4371 15 16

Finland

DENISON HYDRAULICS
 P.O. Box 36
 FIN-08101 Lohja
 Finland
 Tel. (358) 208 33 045
 Fax (358) 207 33 045

France

DENISON HYDRAULICS
 FRANCE SA
 14, route du Bois Blanc
 BP 539
 18105 Vierzon
 France
 Tel. (33) 2 48 53 01 20
 Fax (33) 2 48 75 02 91

Other sales offices:
 Bordeaux
 Lyon
 Paris

Germany

DENISON HYDRAULIK GmbH
 Herderstrasse 26
 D-40721 Hilden
 Germany
 Tel. (49) 2103 940-6
 Fax (49) 2103 940-880

Other sales offices:
 Dresden
 Hanover
 Stuttgart

Great Britain

DENISON HYDRAULICS U.K.
 Ltd.
 Kenmore Road
 Wakefield 41, Industrial Estate
 Wakefield, WF20XE
 West Yorkshire
 England
 Tel. (44) 19 24 826 021
 Fax (44) 19 24 826 146

Other sales offices:
 Burgess Hill

Hong Kong

DENISON HYDRAULICS Ltd.
 Unit 2, 25/F Wharf Cable Tower
 9 Hoi Shing Road
 Tsuen Wan
 N.T., Hong Kong
 Tel. (852) 24988381
 Fax (852) 24991522

Italy

DENISON HYDRAULICS S.r.l.
 Viale Europa 68
 20090 Cusago
 Milano
 Italy
 Tel. (39) 2 90330 1
 Fax (39) 2 90390 695

Japan

DENISON JAPAN Inc.
 4-2-1 Tsujido-Shinmachi
 Fujisawa 251,
 Japan
 Tel. (81) 466 35 3257
 Fax (81) 466 35 2029

Other sales office:
 Osaka

Mexico, Central America, South America and Caribbean Countries Contact

DENISON HYDRAULICS Inc.
 6167 NW 181 Terrace Circle North
 Miami, FL 33015
 USA
 Tel. (305) 362 2246
 Fax (305) 362 6220

P.R. China

DENISON HYDRAULICS Ltd.
 3F, No. 1, Mao Jia Zhai, Bai Lian Jing
 Pudong New Area,
 Shanghai 200126, China
 Tel. (86) 21 5886 8991
 Fax (86) 21 5886 1978

Singapore

DENISON HYDRAULICS S.E.A. Pte.
 Ltd.
 No. 11 Lorong Tukang Dua
 Singapore 2261
 Tel. (65) 2687840
 Fax (65) 2687847

Spain

DENISON HYDRAULICS, S.A.
 Gomis, 1
 08023 Barcelona
 Spain
 Tel. (34) 3418 46 87
 Fax (34) 3211 65 07

Other sales offices:
 San Sebastian

Sweden

DENISON HYDRAULICS
 SVENSKA AB
 Sporregatan 13
 213 77 - Malmö
 Sweden
 Tel. (46) 40 21 04 40
 Fax (46) 40 21 47 26

Other sales offices:
 Spånga

Taiwan

DENISON HYDRAULICS Ltd.
 6F-10, No. 79, Sec. 2, Roosevelt road,
 Taipei, Taiwan, R.O.C.
 Tel. (886) 2 3645101 / 3645102
 Fax (886) 2 3639025

USA

DENISON HYDRAULICS Inc.
 14249 Industrial Parkway
 Marysville, OH 43040
 USA
 Tel. 937 644 3915
 Fax 937 642 3738
 For nearest Distributor:
 Call toll free 1 800 551 5956

Other sales offices:

Fulton, CA
 Mulberry, FL
 Moline, IL
 Rock Island, IL
 Kentwood, MI
 Medina, OH
 Portland, OR
 Memphis, TN
 Arlington, TX
 Houston, TX

Other European, Middle East and African Countries Contact

DENISON HYDRAULICS
 FRANCE SA
 14, route du Bois Blanc
 BP 539
 18105 Vierzon Cedex
 France
 Tel. (33) 2 48 53 01 44
 Fax (33) 2 48 53 01 46

06-97

Your local DENISON representative

DENISON Hydraulics