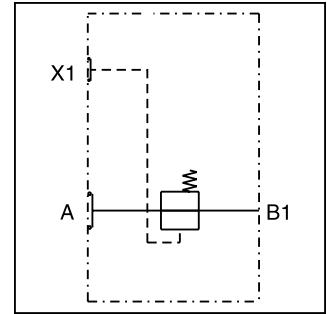


**B**

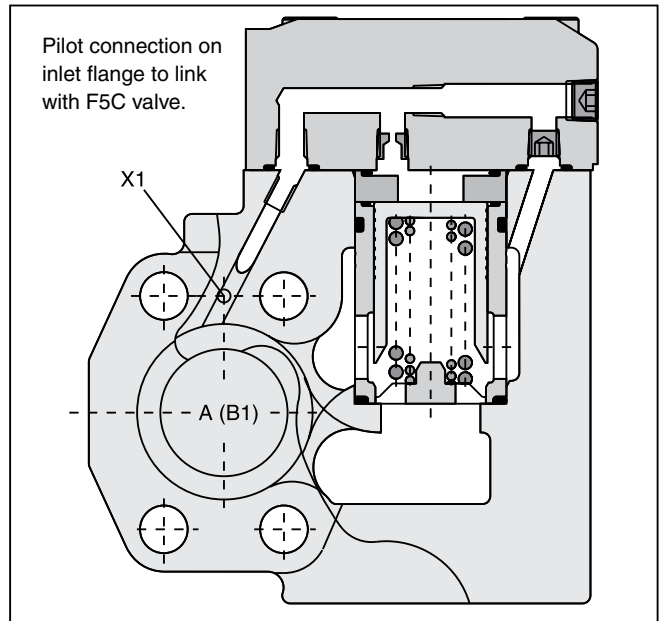
**General Description**

Series R5A direct operated, 2-way pressure compensators can be combined with any type of fixed or adjustable flow valve (throttle) to provide a load compensated flow. The combination with the proportional throttle valve F5C serves as a compact 2-way flow control unit in SAE flange design. The R5A is typically used as meter-out compensator behind the flow resistor.



**Features**

- Seated type, 2-way pressure compensator.
- SAE 61 flange.
- 8.4 bar (121.8 PSI) control pressure.
- 3 sizes, SAE Code 61 3/4", 1", 1 1/4".
- Load compensated flow in combination with F5C.



**Specifications**

General			
Size	06	08	10
Subplate Mounting	Flanged according to SAE 61		
Mounting Position	Unrestricted		
Ambient Temperature Range	-20°C to +50°C (-4°F to +122°F)		
Hydraulic			
Control Pressure	8.4 Bar (121 PSI)		
Maximum Operating Pressure	350 Bar (5075 PSI)	350 Bar (5075 PSI)	280 Bar (4060 PSI)
Nominal Flow	90 LPM (23.8 GPM)	300 LPM (79.4 GPM)	600 LPM (158.7 GPM)
Fluid	Hydraulic oil as per DIN 51524...51535, other on request		
Fluid Temperature	-20°C to +80°C (-4°F to +176°F)		
Viscosity	<b>Recommended Permitted</b>	30 to 80 cSt / mm <sup>2</sup> /s (139 to 371 SSU) 10 to 650 cSt / mm <sup>2</sup> /s (46 to 1761 SSU)	
Filtration	ISO Class 4406 (1999) 18/16/13 (acc. NAS 1638: 7)		

**Ordering Information**

<div style="border: 1px solid black; padding: 2px; width: 40px; margin: 0 auto;">R5A</div> <p>2-Port Compensator</p>	<div style="border: 1px solid black; width: 20px; height: 20px; margin: 0 auto;"></div> <p>Size</p>	<p>—</p>	<div style="border: 1px solid black; width: 20px; height: 20px; margin: 0 auto;"></div> <p>SAE 61 Interface</p>	<div style="border: 1px solid black; width: 20px; height: 20px; margin: 0 auto; text-align: center;">4</div> <p>2-Port Body</p>	<div style="border: 1px solid black; width: 20px; height: 20px; margin: 0 auto; text-align: center;">1</div> <p>Plain Cap</p>	<div style="border: 1px solid black; width: 20px; height: 20px; margin: 0 auto; text-align: center;">01</div> <p>Pilot Connection thru Port X1</p>	<div style="border: 1px solid black; width: 20px; height: 20px; margin: 0 auto; text-align: center;">B</div> <p>Design Series</p>	<div style="border: 1px solid black; width: 20px; height: 20px; margin: 0 auto;"></div> <p>Seal</p>	<div style="border: 1px solid black; width: 20px; height: 20px; margin: 0 auto;"></div> <p>Options Check with Factory</p>
--	---	----------	---	---	---	--	---	---	---

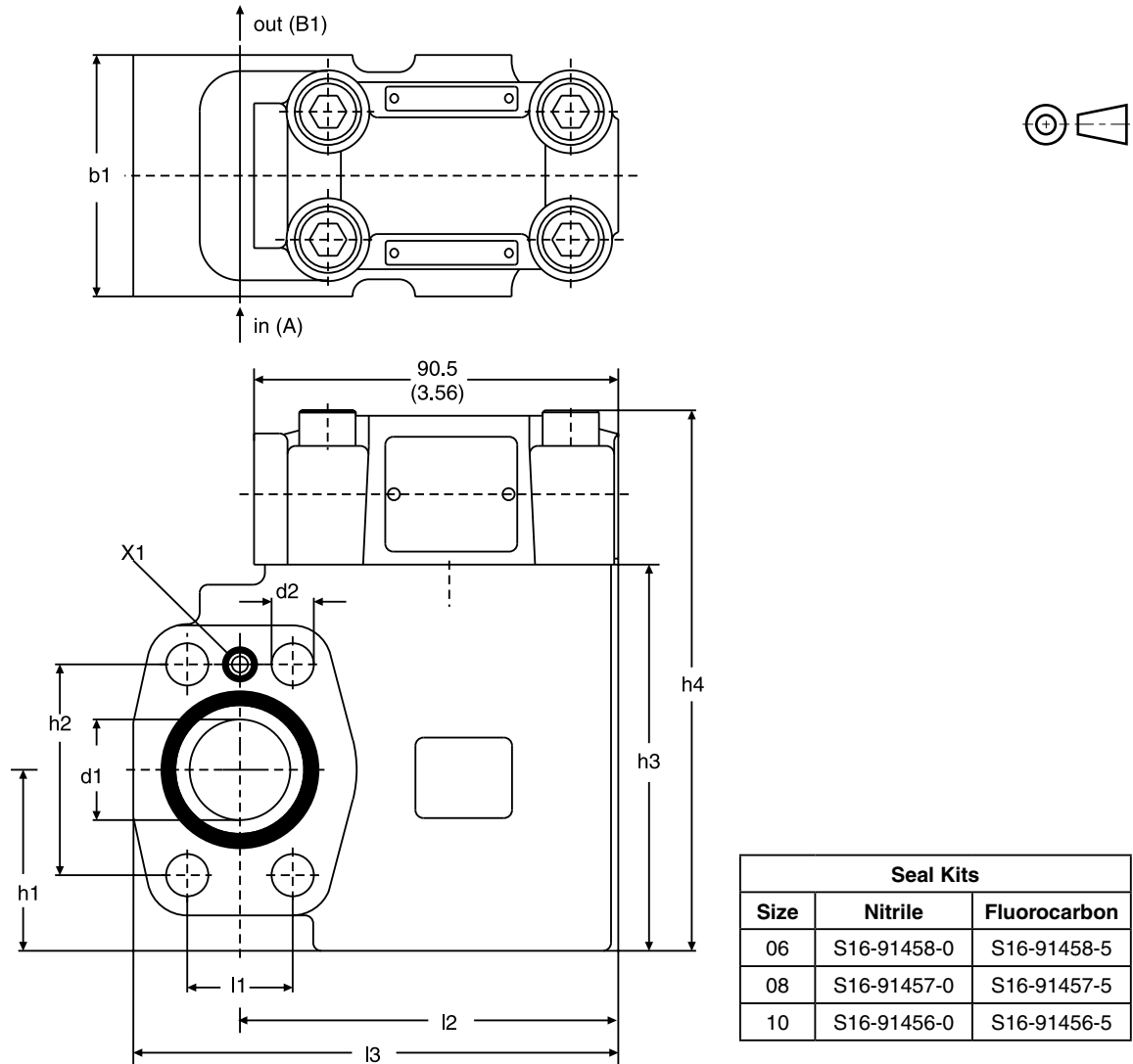
  

Code	Description	Code	Size	Max. Pressure	Code	Description	Weight
06	SAE 3/4"	4	10	280 Bar (4060 PSI)	1	Nitrile	R5A06 3.6 kg (7.9 lbs.)
08	SAE 1"	5	06/08	350 Bar (5075 PSI)	5	Fluorocarbon	R5A08 4.3 kg (9.5 lbs.)
10	SAE 1-1/4"						R5A10 5.6 kg (12.3 lbs.)

B

**Dimensions**

Inch equivalents for millimeter dimensions are shown in (\*\*)



Size	l1	l2	l3	b1	h1	h2	h3	h4	d1	d2
06	22.2 (0.87)	84.0 (3.31)	108.0 (4.25)	60.0 (2.36)	37.0 (1.46)	47.6 (1.87)	90.0 (3.54)	128.0 (5.04)	19.0 (0.75)	10.5 (0.41)
08	26.2 (1.03)	101.0 (3.98)	128.0 (5.04)	60.0 (2.36)	45.0 (1.77)	52.4 (2.06)	96.0 (3.78)	134.0 (5.28)	25.0 (0.98)	10.5 (0.41)
10	30.2 (0.44)	101.0 (3.98)	135.0 (5.31)	75.0 (2.95)	48.0 (1.89)	58.7 (2.31)	109.0 (4.29)	147.0 (5.79)	32.0 (1.26)	12.5 (0.49)