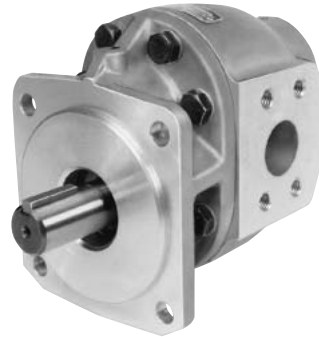


**Specifications  
 for R20 Series**

Description ..... Gear Pump  
 Flow Range ..... To 98 GPM (370.9 LTR)  
 Displacements ..... To 9.10 C.I.R.(149.12 CC's/REV.)  
 Maximum Pressure to ..... 2500 PSI (172 BAR)  
 Maximum Speed to ..... 2500 RPM  
 Rotation ..... Reversible  
 Bearing ..... Journal  
 Construction ..... Aluminum or Cast Iron\*



**Performance Data**

| Pump Model | Section Size | Displacement/Revolution (Theoretical) |              |        |                   |                  | Maximum Pressure    |     | Maximum Speed |
|------------|--------------|---------------------------------------|--------------|--------|-------------------|------------------|---------------------|-----|---------------|
|            |              | US Gallons                            | Cubic Inches | Liters | Cubic Centimeters | Imperial Gallons | PSI                 | BAR | RPM           |
| R20        | 150          | .0131                                 | 3.02         | .0496  | 49.498            | .0108            | 2500                | 172 | 2500          |
| R20        | 200          | .0175                                 | 4.04         | .0662  | 66.204            | .0146            | 2500                | 172 | 2500          |
| R20        | 250          | .0219                                 | 5.06         | .0829  | 82.919            | .0182            | 2500                | 172 | 2500          |
| R20        | 300          | .0262                                 | 6.05         | .0992  | 99.142            | .0218            | 2500 <sup>(1)</sup> | 172 | 2500          |
| R20        | 350          | .0306                                 | 7.07         | .1158  | 115.857           | .0255            | 2500 <sup>(2)</sup> | 172 | 2500          |
| R20        | 400          | .0350                                 | 8.08         | .1325  | 132.408           | .0292            | 2500                | 172 | 2500          |
| R20        | 450          | .0394                                 | 9.10         | .1491  | 149.123           | .0328            | 2500                | 172 | 2500          |

Notes: (1) 2100 PSI maximum due to torque limitations of No. 4 shaft. (2) 1800 PSI maximum due to torque limitations of No. 4 shaft  
 All data based on SAE 10W oil at 150°F. Available with Viton® Seals.

\*Some models and sizes are available for pressure up to 3500 PSI. Cast-iron not available on all models. Consult factory for availability.



**CAUTION:** "Inlet vacuum" should not exceed 5" Hg at normal operating speed and temperature. Operation of pumps in excess of 5" Hg requires factory approval.

**Dimensional Data**

| Mounting Dimensions |   |              |                       |             |                            |             |                  |      |
|---------------------|---|--------------|-----------------------|-------------|----------------------------|-------------|------------------|------|
| PUMP SIZE           | For B & C 4-Bolt & B & C 2-Bolt Flanges |              | SAE 4-Bolt Both Ports |             | SAE 4-Bolt Port Both Sides |             | Shipping Weights |      |
|                     | A                                       | B            | Conn. Sz.             | Hole Dia.   | Conn. Sz.                  | Hole Dia.   | lbs.             | kgs. |
| R20150              | 104.6 (4.12)                            | 167.8 (6.61) | —                     | —           | 1"                         | 25.4 (1.00) | 19               | 8.62 |
| R20200              | 104.6 (4.12)                            | 167.8 (6.61) | —                     | —           | 1"                         | 25.4 (1.00) | 20               | 9.07 |
| R20250              | 104.6 (4.12)                            | 167.8 (6.61) | 1-1/4"                | 35.0 (1.38) | 1-1/4"                     | 31.7 (1.25) | 21               | 9.53 |
| R20300              | 104.6 (4.12)                            | 175.2 (6.90) | 1-1/2"                | 38.1 (1.50) | 1-1/4"                     | 31.7 (1.25) | 22               | 9.98 |
| R20350              | 110.4 (4.35)                            | 182.3 (7.18) | 1-1/2"                | 35.0 (1.38) | 1-1/2"                     | 38.1 (1.50) | 23               | 10.4 |
| R20400              | 110.4 (4.35)                            | 189.7 (7.47) | —                     | —           | 1-1/2"                     | 38.1 (1.50) | 24               | 10.9 |
| R20450              | 118.3 (4.66)                            | 196.8 (7.75) | —                     | —           | 1-1/2"                     | 38.1 (1.50) | 25               | 11.3 |

| SAE 4-Bolt Connector Ports |            |              |             |              |           |
|----------------------------|------------|--------------|-------------|--------------|-----------|
| Size                       | C          | D            | E           | F            | G         |
| 1"                         | 12.9 (.51) | 26.1 (1.031) | 26.1 (1.03) | 52.3 (2.062) | 3/8-16NC  |
| 1-1/4"                     | 14.9 (.59) | 30.1 (1.188) | 29.2 (1.15) | 58.7 (2.313) | 7/16-14NC |
| 1-1/2"                     | 17.7 (.70) | 35.7 (1.406) | 34.7 (1.37) | 69.8 (2.750) | 1/2-13NC  |

SAE 4-Bolt NPT Connectors are available. See Accessory Section

Inch equivalents for millimeter dimensions are shown in (\*\*).

