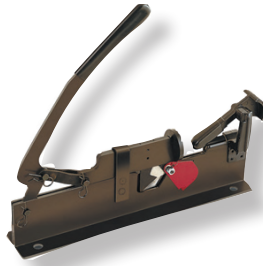


Push-Lok Cut-Off & Assembly Tool

Part No. 881540



Features

- Combined hose cutter and toggle action press that cuts and assembles Parker Push-Lok in sizes 1/4" through 3/4" I.D.

Specifications

- Dimensions: 16" long
- Shipping Weight: 4 lbs.

Hose Cut-Off Tool

Part No. 316



Features

- Small in size and easy to use
- Quick cutting of textile reinforced hose
- Ruggedly built for years of trouble-free service

Specifications

- Dimensions: 15" long
- Shipping Weight: 6 lbs.

Hose
A

Fittings
B

Equipment Cut-Off Machines
C

Accessories
D

Technical
E

Hose Cut-Off Tool

Part No. TH11-1



Features

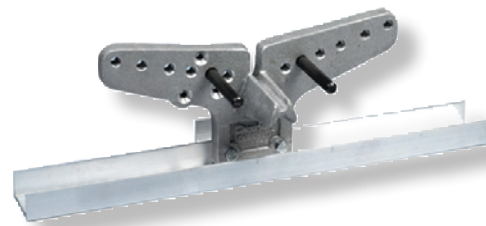
- Designed for quick, easy cutting of textile reinforced hose.
- Squarely cuts Push-Lok hose in sizes 1/4" through 3/4" I.D.

Specifications

- Dimensions: 8" long
- Shipping Weight: 0.3 lbs.

Hose Cut-Off Tool - Handykut

Part No. 871522



Features

- Portable tool for efficient cutting of hose
- Can be positioned onto a flat surface by clamps or by locking it in a vise, properly align the hose in a radius and cut it with a hacksaw

Specifications

- Dimensions: 6" wide x 18" long x 6" high
- Shipping Weight: 10 lbs.