

PUMP Brief

Hydraulic Pump Division

TI-0015

PREMIER Series Pumps

New Compensated Mode Option for Extended Performance

Parker's open loop Premier Series variable displacement pumps have been serving the industry for decades. Their popularity for use in mills and test stand applications is attributed to the superior life they provide with alternative fluids, high operating pressures, and their ability to operate in compensated standby mode for extended periods.

This new option is designed to further extend life and reliability for units that operate almost exclusively on the compensator. The option is available on the three largest Premier frame sizes – P09/140, P12/200 and P16/260.

The improved service life is gained through modifications to the cam and port plate timing. Note: In some instances this option may impact noise level and should be evaluated on a case-by-case basis.

Use of this new option should be considered for any application that operates in a compensated mode (low flow / high pressure) for extended periods of time.

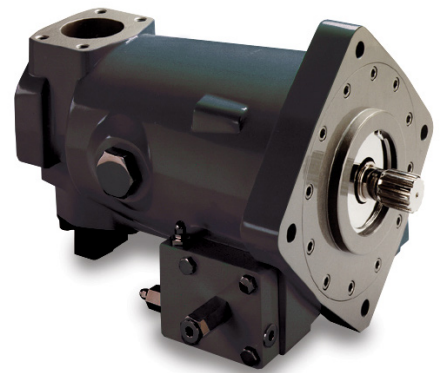
To order this new compensated mode option, insert the letter "M" (for applications with input speeds above 1800 rpm), or "N" (for 1800 rpm or below) where the "style" of pump is called out in the model description. Examples include:

P16**M** 2R1D C10 00

P16**N** 2R1D C10 00

Support

For assistance, contact our HPD technical support team at **937.644.3915**, or contact **pumptechsupport@parker.com** for assistance.



Parker Hannifin Corporation
Hydraulic Pump Division
14249 Industrial Pkwy.
Marysville, OH 43040
phone 937 644 3915
fax 937 642 3738
www.parker.com