

Piston Seal OK Profile

Catalog EPS 5370/USA



OK Profile, High Pressure Split Cap Piston Seal

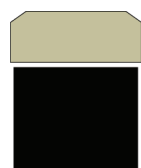
The OK profile is a bi-directional piston seal designed for heavy duty hydraulic applications. Its durable, two-piece design installs easily onto a solid piston without the necessity of auxiliary tools. When installed into the bore, the diameter of the OK profile is compressed to close the step cut in the cap to provide excellent, drift free sealing performance. The glass-filled nylon sealing surface handles the toughest applications. It will resist shock loads, wear, contamination, and will resist extrusion or chipping when passing over cylinder ports. The rectangular nitrile energizer ring ensures resistance to compression set to increase seal life.

The OK profile is sold only as an assembly. See part number nomenclature.

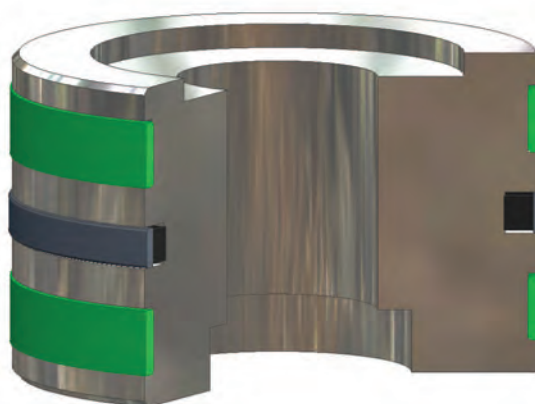
Technical Data

Standard Materials	Temperature Range	Pressure Range†	Surface Speed
Cap W4650NHH	-65°F to 275°F (-54°C to 135°C)	7250 psi (500 bar)	< 3.3 ft/s (1.0 m/sec)
Energizer A 70A Nitrile	-40°F to 250°F (-40°C to 121°C)		

†Pressure Range without wear rings (see Table 2-4, page 2-5).



OK Cross-Section



OK installed in Piston Gland

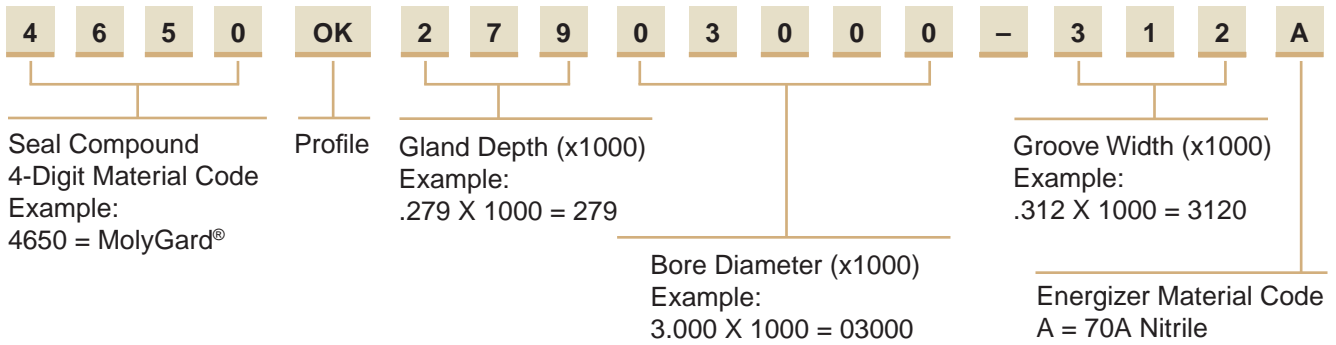
7

09/01/07

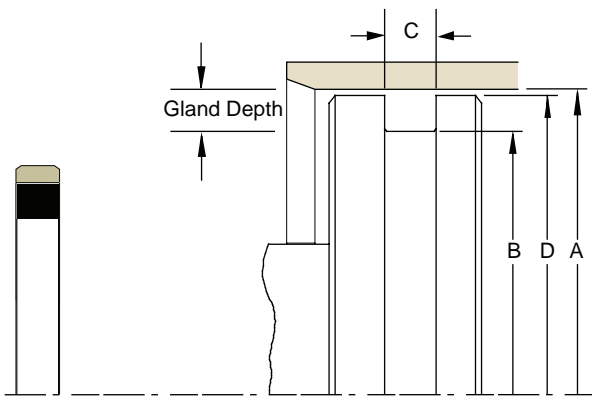
OK Profile

Part Number Nomenclature — OK Profile

Table 7-9. OK Profile — Inch



Gland Dimensions — OK Profile



Please refer to Engineering Section 2, Page 2-8 for surface finish and additional hardware considerations.

Table 7-10. OK Gland Dimensions — Inch

A Bore Diameter +.005/-.000	B Groove Diameter +.000/-.005	C Groove Width +.005/-.000	D Piston Diameter* +.000/-.001	Part Number
1.500	0.962	0.282	1.435	4650OK26901500-282A
2.000	1.462	0.282	1.935	4650OK26902000-282A
2.500	1.962	0.282	2.435	4650OK26902500-282A
2.500	1.962	0.312	2.435	4650OK26902500-312A
2.750	2.192	0.282	2.670	4650OK27902750-282A
3.000	2.442	0.312	2.920	4650OK27903000-312A
3.250	2.692	0.312	3.170	4650OK27903250-312A
3.500	2.942	0.282	3.420	4650OK27903500-282A
3.500	2.942	0.312	3.420	4650OK27903500-312A
3.750	3.192	0.282	3.670	4650OK27903750-282A
4.000	3.442	0.282	3.920	4650OK27904000-282A
4.000	3.402	0.315	3.920	4650OK29904000-315A
4.500	3.942	0.282	4.420	4650OK27904500-282A
5.000	4.442	0.282	4.920	4650OK27905000-282A
5.500	4.740	0.377	5.400	4650OK38005500-377A
6.000	5.240	0.377	5.900	4650OK38006000-377A
7.000	6.240	0.377	6.900	4650OK38007000-377A
8.000	7.240	0.377	7.900	4650OK38008000-377A

*If used with wear rings, refer to wear ring piston diameter, see Section 9.

NOTE: For sizes larger than those shown in the table, please contact your local Parker Seal representative.