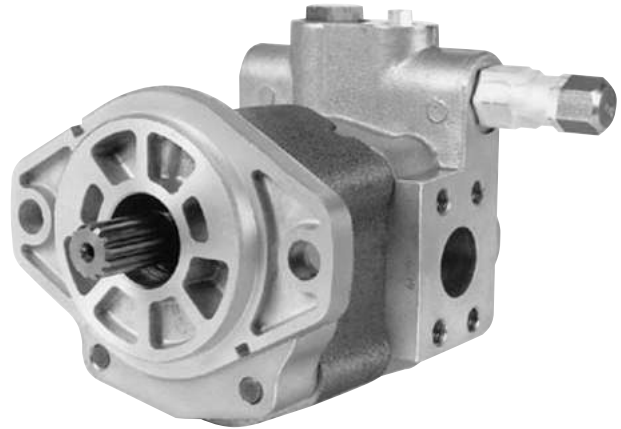


**Specifications  
for PVP16 Series**

Description ..... Priority Valve Gear Pumps  
Pump Flow Range ..... To 38 GPM (143.8 LTR.)  
Priority Flow Range ..... 2 to 10 GPM Standard (7.6 to 37.8 LTR.)  
Displacements ..... To 3.904 C.I.R. (63.94 CC's/REV.)  
Maximum Pressure to ..... 3000 PSI (207 BAR)  
Maximum Speed to ..... 3600 RPM  
Rotation ..... A or C  
Bearings ..... Journal  
Construction ..... Cast Iron Gear Plate with  
Aluminum Flange and Cover (Valve) Plate



**Performance Data**

Pump Model	Section Size	Displacement/Revolution (Theoretical)					Maximum Pressure		Maximum Speed
		US Gallons	Cubic Inches	Liters	Cubic Centimeters	Imperial Gallons	PSI	BAR	RPM
PVP16	45	.0038	.878	.0144	14.388	.0031	3000	207	3600
PVP16	65	.0055	1.270	.0208	20.812	.0045	3000	207	3600
PVP16	85	.0072	1.663	.0273	27.252	.0060	3000	207	3400
PVP16	100	.0085	1.964	.0321	32.184	.0070	3000	207	3300
PVP16	115	.0097	2.241	.0367	36.723	.0080	3000	207	3100
PVP16	150	.0127	2.934	.0481	48.080	.0105	3000	207	2800
PVP16	180	.0152	3.511	.0575	57.535	.0125	2200	152	2500
PVP16	200	.0169	3.904	.0639	63.942	.0140	2000	138	2500

All data based on SAE 10W oil at 150°F.  
Available with Viton® Seals.

**CAUTION:** "Inlet vacuum" should not exceed 5" Hg at normal operating speed and temperature.  
Operation of pumps in excess of 5" Hg requires factory approval.

**Priority Flow**

CAT. NO 1	CAT. NO 2	CAT. NO 3	CAT. NO 4	CAT. NO 5	CAT. NO 6	CAT. NO 7	CAT. NO 8	CAT. NO 9
1 to 3 GPM	2 to 3 GPM	3 to 4 GPM	4 to 5 GPM	5 to 6 GPM	6 to 7 GPM	7 to 8 GPM	8 to 9 GPM	9 to 10 GPM
3.8 to 7.6 LPM	7.6 to 11.4 LPM	11.4 to 15.1 LPM	15.1 to 18.9 LPM	18.9 to 22.7 LPM	22.7 to 26.5 LPM	26.5 to 30.3 LPM	30.3 to 34.0 LPM	34.0 to 37.8 LPM

Consult factory for priority flow over 10 GPM.

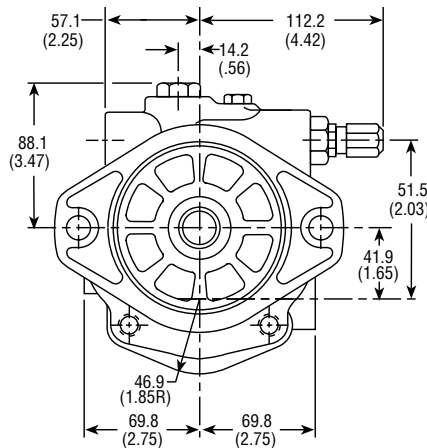
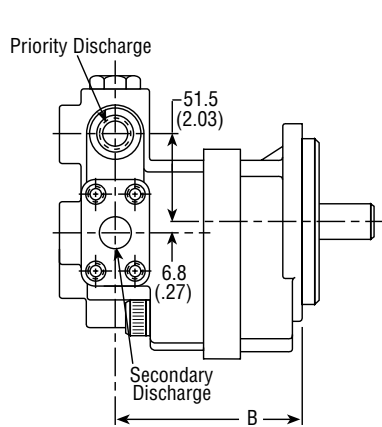
**Dimensional Data**

Pump Models	Flange Type									Shipping Weights (Approx.)	
	D			E&J			F				
	A	B	C	A	B	C	A	B	C	lbs.	kgs.
PVP16 - 45	96.2 (3.79)	116.8 (4.60)	150.3 (5.92)	124.9 (4.92)	145.5 (5.73)	179.0 (7.05)	99.5 (3.92)	120.1 (4.73)	153.6 (6.05)	13	5.9
PVP16 - 65	101.6 (4.00)	122.1 (4.81)	155.7 (6.13)	130.3 (5.13)	150.8 (5.94)	184.4 (7.26)	104.9 (4.13)	125.4 (4.94)	159.0 (6.26)	14	6.4
PVP16 - 85	107.1 (4.22)	127.7 (5.03)	161.2 (6.35)	135.8 (5.35)	156.4 (6.16)	189.9 (7.48)	110.4 (4.35)	131.0 (5.16)	164.5 (6.48)	15	6.8
PVP16 - 100	111.2 (4.38)	131.8 (5.19)	165.3 (6.51)	139.9 (5.51)	160.5 (6.32)	194.0 (7.64)	114.5 (4.51)	135.1 (5.32)	168.6 (6.64)	16	7.3
PVP16 - 115	115.3 (4.54)	135.8 (5.35)	169.4 (6.67)	144.0 (5.67)	164.5 (6.48)	198.1 (7.80)	118.6 (4.67)	139.1 (5.48)	172.7 (6.80)	17	7.7
PVP16 - 150	124.7 (4.91)	145.2 (5.72)	178.8 (7.04)	153.4 (6.04)	173.9 (6.85)	207.5 (8.17)	128.0 (5.04)	148.5 (5.85)	182.1 (7.17)	18	8.2
PVP16 - 180	132.8 (5.23)	153.4 (6.04)	186.9 (7.36)	161.5 (6.36)	182.1 (7.17)	215.6 (8.49)	136.1 (5.36)	156.7 (6.17)	190.2 (7.49)	20	9.1
PVP16 - 200	138.1 (5.44)	158.7 (6.25)	192.2 (7.57)	166.8 (6.57)	187.4 (7.38)	220.9 (8.70)	144.4 (5.57)	162.0 (6.38)	195.5 (7.70)	21	9.5

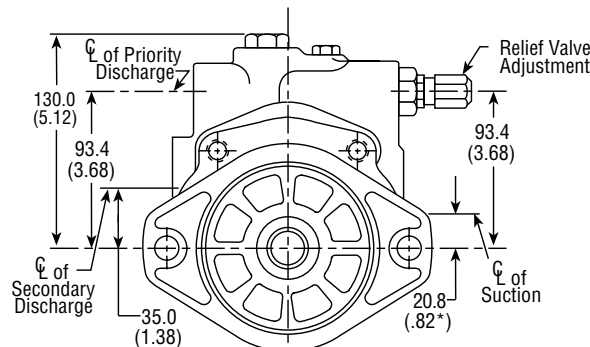
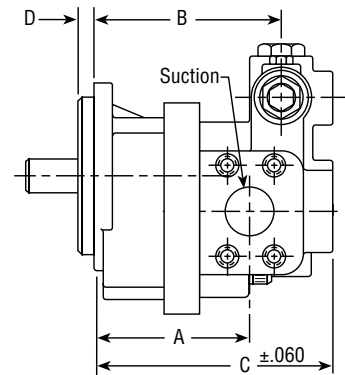
Pump Models	Flange Type						Shipping Weights (Approx.)	
	N			S				
	A	B	C	A	B	C	lbs.	kgs.
PVP16 - 45	93.2 (3.67)	113.7 (4.48)	147.3 (5.80)	139.1 (5.48)	159.7 (6.29)	193.2 (7.61)	13	5.9
PVP16 - 65	98.5 (3.88)	119.1 (4.69)	152.6 (6.01)	144.5 (5.69)	165.1 (6.50)	198.6 (7.82)	14	6.4
PVP16 - 85	104.1 (4.10)	124.7 (4.91)	158.2 (6.23)	150.1 (5.91)	170.6 (6.72)	204.2 (8.04)	15	6.8
PVP16 - 100	108.20 (4.26)	128.7 (5.07)	162.3 (6.39)	154.1 (6.07)	174.7 (6.88)	208.2 (8.20)	16	7.3
PVP16 - 115	112.2 (4.42)	132.8 (5.23)	166.3 (6.55)	158.2 (6.23)	178.8 (7.04)	212.3 (8.36)	17	7.7
PVP16 - 150	121.6 (4.79)	142.2 (5.60)	175.7 (6.92)	167.6 (6.60)	188.2 (7.41)	221.7 (8.73)	18	8.2
PVP16 - 180	129.7 (5.11)	150.3 (5.92)	183.8 (7.24)	175.7 (6.92)	196.3 (7.73)	229.8 (9.05)	20	9.1
PVP16 - 200	135.1 (5.32)	155.7 (6.13)	189.2 (7.45)	181.1 (7.13)	201.6 (7.94)	235.2 (9.26)	21	9.5

**D Dimensions**

Flange Type	Dimensions
D	6.3 (.250)
E	4.7 (.187)
F	
J	6.3 (.250)
N	9.5 (.375)
S	6.3 (.250)



Drawn for Counterclockwise Rotation



Drawn for Clockwise Rotation

Inch equivalents for millimeter dimensions are shown in (\*\*).