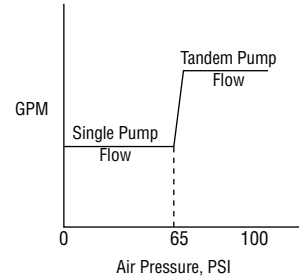


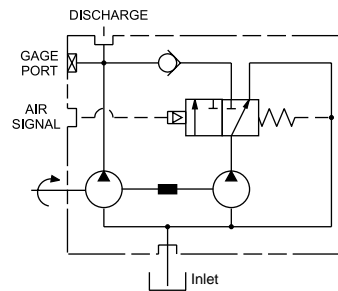
**Specifications  
 for PSH20 Series**

Description ..... Air-Actuated Unloading Pump  
 Combined Flow Range ... To 98 GPM Per Selection (370.9 LTR.)  
 Displacements... To 9.10 C.I.R. Each Section (149.12 CC's/REV.)  
 Maximum Pressure to ..... 2500 PSI (172 BAR)  
 Maximum Speed to ..... 2500 RPM  
 Rotation ..... A or C  
 Bearings ..... Journal  
 Construction ..... Aluminum



**Tandem Pump With Air-Actuated Unloading Valve**

This tandem pump with air-actuated unloading valve is commonly used to select either the combined flow rate of both pump sections. or the flow rate of only one pump section.



**Performance Data Per Section**

Pump Model	Section Size	Displacement/Revolution (Theoretical)					Maximum Pressure		Maximum Speed RPM
		US Gallons	Cubic Inches	Liters	Cubic Centimeters	Imperial Gallons	PSI	BAR	
PSH20	150	.0131	3.02	.0496	49.489	.0108	2500	172	2500
PSH20	200	.0175	4.04	.0662	66.204	.0146	2500	172	2500
PSH20	250	.0219	5.06	.0829	82.919	.0182	2500	172	2500
PSH20	300	.0262	6.05	.0992	99.142	.0218	2500	172	2500
PSH20	350	.0306	7.07	.1158	115.857	.0255	2500	172	2500
PSH20	400	.0350	8.08	.1325	132.408	.0292	2500	172	2500
PSH20	450	.0394	9.10	.1491	149.123	.0328	2500	172	2500

All data based on SAE 10W oil at 150°F. Available with Viton® Seals.



**CAUTION:** "Inlet vacuum" should not exceed 5" Hg at normal operating speed and temperature. Operation of pumps in excess of 5" Hg requires factory approval.

**Dimensional Data**

MOUNTING DIMENSIONS								
FRONT SECTION SIZE	REAR SECTION SIZE	CONN. SIZE	DISCHARGE FRONT SECTION HOLE DIA.	MOUNTING DIMENSIONS			SHIPPING WEIGHTS	
				A	B	C	lbs.	kgs.
20150	—150	1"	23.6 (.93)	91.4 (3.60)	195.0 (7.68)	352.0 (13.86)	56	20.9
	—200	1"	23.6 (.93)	91.4 (3.60)	195.0 (7.68)	371.8 (14.64)	57	21.3
	—250	1"	23.6 (.93)	91.4 (3.60)	195.0 (7.68)	382.0 (15.04)	58	21.7
	—300	1"	23.6 (.93)	91.4 (3.60)	195.0 (7.68)	389.1 (15.32)	60	22.4
	—350	1"	23.6 (.93)	91.4 (3.60)	195.0 (7.68)	379.2 (14.93)	62	23.1
	—400	1"	23.6 (.93)	91.4 (3.60)	195.0 (7.68)	386.3 (15.21)	64	23.9
—450	1"	23.6 (.93)	91.4 (3.60)	195.0 (7.68)	393.7 (15.50)	66	24.6	
20200	—200	1-1/2"	30.2 (1.19)	95.2 (3.75)	215.1 (8.47)	391.9 (15.43)	59	22.0
	—250	1-1/2"	30.2 (1.19)	95.2 (3.75)	215.1 (8.47)	402.0 (15.83)	60	22.4
	—300	1-1/2"	30.2 (1.19)	95.2 (3.75)	215.1 (8.47)	409.1 (16.11)	62	23.1
	—350	1-1/2"	30.2 (1.19)	95.2 (3.75)	215.1 (8.47)	399.2 (15.72)	64	23.9
	—400	1-1/2"	30.2 (1.19)	95.2 (3.75)	215.1 (8.47)	406.4 (16.00)	66	24.6
	—450	1-1/2"	30.2 (1.19)	95.2 (3.75)	215.1 (8.47)	413.7 (16.29)	68	25.4
20250	—250	1-1/2"	30.2 (1.19)	101.6 (4.00)	222.2 (8.75)	409.1 (16.11)	62	23.1
	—300	1-1/2"	30.2 (1.19)	101.6 (4.00)	222.2 (8.75)	416.3 (16.39)	64	23.9
	—350	1-1/2"	30.2 (1.19)	101.6 (4.00)	222.2 (8.75)	406.4 (16.00)	66	24.6
	—400	1-1/2"	30.2 (1.19)	101.6 (4.00)	222.2 (8.75)	413.5 (16.28)	68	25.4
	—450	1-1/2"	30.2 (1.19)	101.6 (4.00)	222.2 (8.75)	420.8 (16.57)	70	26.1
20300	—300	1-1/2"	30.2 (1.19)	105.1 (4.14)	229.3 (9.03)	423.4 (16.67)	68	25.4
	—350	1-1/2"	30.2 (1.19)	105.1 (4.14)	229.3 (9.03)	413.5 (16.28)	70	26.1
	—400	1-1/2"	30.2 (1.19)	105.1 (4.14)	229.3 (9.03)	420.6 (16.56)	72	26.9
	—450	1-1/2"	30.2 (1.19)	105.1 (4.14)	229.3 (9.03)	427.9 (16.85)	74	27.6
20350	—350	1-1/2"	30.2 (1.19)	110.4 (4.35)	236.7 (9.32)	420.8 (16.57)	72	26.9
	—400	1-1/2"	30.2 (1.19)	110.4 (4.35)	236.7 (9.32)	427.9 (16.85)	74	27.6
	—450	1-1/2"	30.2 (1.19)	110.4 (4.35)	236.7 (9.32)	435.3 (17.14)	76	28.4
20400	—400	1-1/2"	34.7 (1.37)	110.4 (4.35)	243.8 (9.60)	435.1 (17.13)	76	28.4
	—450	1-1/2"	34.7 (1.37)	110.4 (4.35)	243.8 (9.60)	442.4 (17.42)	78	29.1
20450	—450	1-1/2"	34.7 (1.37)	118.3 (4.66)	251.2 (9.89)	449.8 (17.71)	80	29.9

SAE 4-BOLT CONNECTOR PORTS					
Size	F	G	H	J	K
1"	12.9 (.51)	26.1 (1.03)	26.1 (1.03)	52.3 (2.06)	3/8-16NC
1-1/2"	17.7 (.70)	35.5 (1.40)	34.7 (1.37)	69.8 (2.75)	1/2-13NC
2-1/2"	25.4 (1.00)	50.8 (2.00)	44.4 (1.75)	88.9 (3.50)	1/2-13NC

Inch equivalents for millimeter dimensions are shown in (\*\*).

