

Wear Ring / Bearing PDT Profile

Catalog EPS 5370/USA

PDT Profile, PTFE Wear Strip for Rod and Piston

PDT wear strip is available in a variety of PTFE blends and provides excellent low-friction performance in pneumatics and light-duty hydraulics. PDTs are available in cut-to-length versions as well as bulk strip. Cut-to-length part numbers reduce prep time by providing precision end cuts and ready-to-install diameters. Bulk strip PDTs offer versatility and reduce part number inventory by providing universal sizing in one part number.



Technical Data

Standard Material

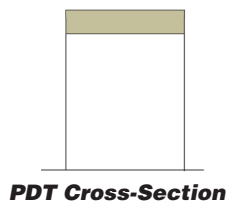
0401 – 40% Bronze-Filled PTFE
0307 – 23% Carbon, 2% Graphite-Filled PTFE
Others available upon request

Radial Tolerance

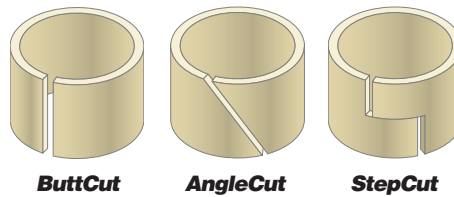
+.000"/-.004"

End Cuts

Butt Cut, Angle Cut, Step Cut



PDT Cross-Section



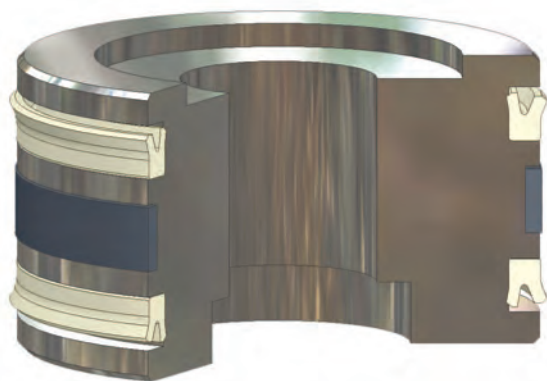
ButtCut

AngleCut

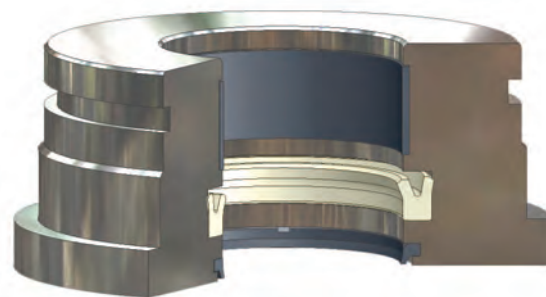
StepCut

Options

Virtually any width, diameter and cross-section can be produced without assessing a setup charge.



Piston sealing system comprised of PDT wear strip and B7 piston u-cups



Rod sealing system comprised of PDT wear strip, B3 rod u-cup and SH959 wiper

09/01/07

Part Number Nomenclature — PDT Profile

Table 9-11. PDT Profile — Cut-to-Length

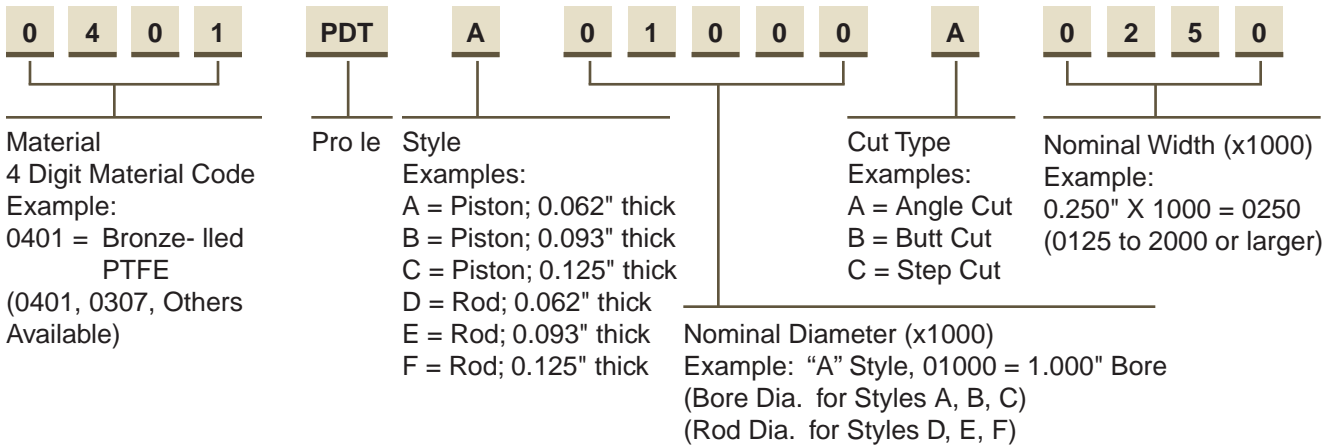
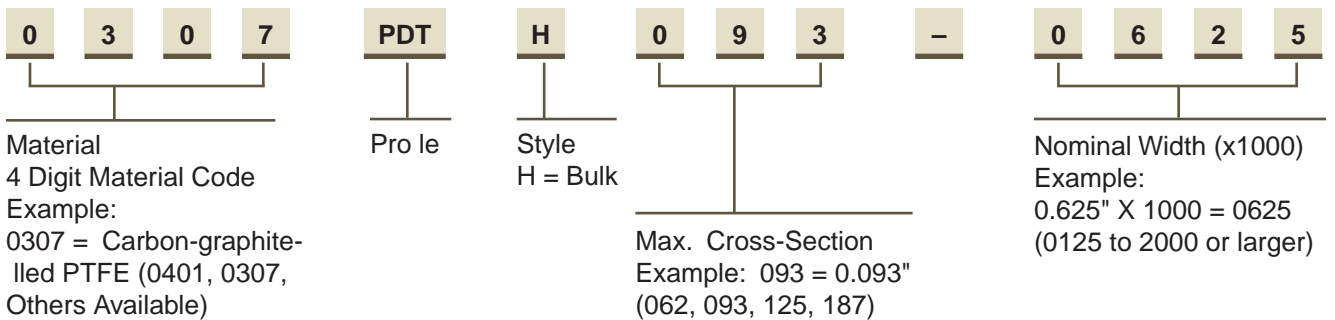
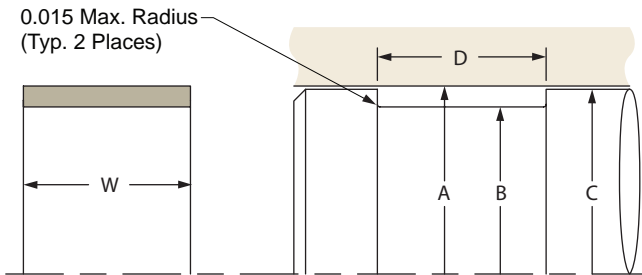


Table 9-12. PDT Profile — Bulk Strip



Gland Dimensions — PDT Profile, Piston (Cut-To-Length)



Please refer to Engineering Section 2, page 2-8 for surface finish and additional hardware considerations.

Table 9-13. PDT Gland Dimensions (Piston, Cut-To-Length) — Inch

| A Bore Diameter | B Groove Diameter | C Piston Diameter | D Groove Width | Part Number |
|--------------------|----------------------|----------------------|-------------------|------------------------|
| +0.002/-0.000 | +0.000/-0.002 | +0.000/-0.002 | +0.010/-0.000 | PDTA |
| 1.000 | 0.875 | 0.979 | D = W + 0.010" | XXXX PDTA 01000 X XXXX |
| 1.062 | 0.937 | 1.041 | D = W + 0.010" | XXXX PDTA 01062 X XXXX |
| 1.125 | 1.000 | 1.104 | D = W + 0.010" | XXXX PDTA 01125 X XXXX |
| 1.187 | 1.062 | 1.166 | D = W + 0.010" | XXXX PDTA 01187 X XXXX |
| 1.250 | 1.125 | 1.229 | D = W + 0.010" | XXXX PDTA 01250 X XXXX |

For custom groove calculations, see Appendix C.



PDT Profile

Table 9-13. PDT Gland Dimensions (Piston, Cut-To-Length) — Inch (Continued)

| A Bore Diameter | B Groove Diameter | C Piston Diameter | D Groove Width | Part Number |
|----------------------|----------------------|----------------------|----------------------|------------------------|
| + .002/- .000 | + .000/- .002 | + .000/- .002 | + .010/- .000 | PDTA |
| 1.312 | 1.187 | 1.291 | D = W + 0.010" | XXXX PDTA 01312 X XXXX |
| 1.375 | 1.250 | 1.354 | D = W + 0.010" | XXXX PDTA 01375 X XXXX |
| 1.437 | 1.312 | 1.416 | D = W + 0.010" | XXXX PDTA 01437 X XXXX |
| 1.500 | 1.375 | 1.479 | D = W + 0.010" | XXXX PDTA 01500 X XXXX |
| 1.562 | 1.437 | 1.541 | D = W + 0.010" | XXXX PDTA 01562 X XXXX |
| 1.625 | 1.500 | 1.604 | D = W + 0.010" | XXXX PDTA 01625 X XXXX |
| 1.687 | 1.562 | 1.666 | D = W + 0.010" | XXXX PDTA 01687 X XXXX |
| 1.750 | 1.625 | 1.729 | D = W + 0.010" | XXXX PDTA 01750 X XXXX |
| 1.875 | 1.750 | 1.854 | D = W + 0.010" | XXXX PDTA 01875 X XXXX |
| 2.000 | 1.875 | 1.979 | D = W + 0.010" | XXXX PDTA 02000 X XXXX |
| + .002/- .000 | + .000/- .002 | + .000/- .002 | + .010/- .000 | PDTB |
| 1.500 | 1.313 | 1.479 | D = W + 0.010" | XXXX PDTB 01500 X XXXX |
| 1.562 | 1.375 | 1.541 | D = W + 0.010" | XXXX PDTB 01562 X XXXX |
| 1.625 | 1.438 | 1.604 | D = W + 0.010" | XXXX PDTB 01625 X XXXX |
| 1.687 | 1.500 | 1.666 | D = W + 0.010" | XXXX PDTB 01687 X XXXX |
| 1.750 | 1.563 | 1.729 | D = W + 0.010" | XXXX PDTB 01750 X XXXX |
| 1.875 | 1.688 | 1.854 | D = W + 0.010" | XXXX PDTB 01875 X XXXX |
| 2.000 | 1.813 | 1.979 | D = W + 0.010" | XXXX PDTB 02000 X XXXX |
| 2.125 | 1.938 | 2.104 | D = W + 0.010" | XXXX PDTB 02125 X XXXX |
| 2.250 | 2.063 | 2.229 | D = W + 0.010" | XXXX PDTB 02250 X XXXX |
| 2.375 | 2.188 | 2.354 | D = W + 0.010" | XXXX PDTB 02375 X XXXX |
| 2.500 | 2.313 | 2.479 | D = W + 0.010" | XXXX PDTB 02500 X XXXX |
| 2.625 | 2.438 | 2.604 | D = W + 0.010" | XXXX PDTB 02625 X XXXX |
| 2.750 | 2.563 | 2.729 | D = W + 0.010" | XXXX PDTB 02750 X XXXX |
| 2.875 | 2.688 | 2.854 | D = W + 0.010" | XXXX PDTB 02875 X XXXX |
| 3.000 | 2.813 | 2.979 | D = W + 0.010" | XXXX PDTB 03000 X XXXX |
| 3.125 | 2.938 | 3.104 | D = W + 0.010" | XXXX PDTB 03125 X XXXX |
| 3.250 | 3.063 | 3.229 | D = W + 0.010" | XXXX PDTB 03250 X XXXX |
| 3.375 | 3.188 | 3.354 | D = W + 0.010" | XXXX PDTB 03375 X XXXX |
| 3.500 | 3.313 | 3.479 | D = W + 0.010" | XXXX PDTB 03500 X XXXX |
| 3.625 | 3.438 | 3.604 | D = W + 0.010" | XXXX PDTB 03625 X XXXX |
| 3.750 | 3.563 | 3.729 | D = W + 0.010" | XXXX PDTB 03750 X XXXX |
| 3.875 | 3.688 | 3.854 | D = W + 0.010" | XXXX PDTB 03875 X XXXX |
| 4.000 | 3.813 | 3.979 | D = W + 0.010" | XXXX PDTB 04000 X XXXX |
| 4.125 | 3.938 | 4.104 | D = W + 0.010" | XXXX PDTB 04125 X XXXX |
| 4.250 | 4.063 | 4.229 | D = W + 0.010" | XXXX PDTB 04250 X XXXX |
| 4.375 | 4.188 | 4.354 | D = W + 0.010" | XXXX PDTB 04375 X XXXX |
| 4.500 | 4.313 | 4.479 | D = W + 0.010" | XXXX PDTB 04500 X XXXX |
| 4.625 | 4.438 | 4.604 | D = W + 0.010" | XXXX PDTB 04625 X XXXX |
| 4.750 | 4.563 | 4.729 | D = W + 0.010" | XXXX PDTB 04750 X XXXX |
| 4.875 | 4.688 | 4.854 | D = W + 0.010" | XXXX PDTB 04875 X XXXX |
| + .004/- .000 | + .000/- .003 | + .000/- .003 | + .010/- .000 | PDTB |
| 5.000 | 4.813 | 4.978 | D = W + 0.010" | XXXX PDTB 05000 X XXXX |
| 5.125 | 4.938 | 5.103 | D = W + 0.010" | XXXX PDTB 05125 X XXXX |

For custom groove calculations, see Appendix C.

09/01/07



Table 9-13. PDT Gland Dimensions (Piston, Cut-To-Length) — Inch (Continued)

| A Bore Diameter | B Groove Diameter | C Piston Diameter | D Groove Width | Part Number |
|----------------------|----------------------|----------------------|----------------------|------------------------|
| + .004/- .000 | + .000/- .003 | + .000/- .003 | + .010/- .000 | PDTB |
| 5.250 | 5.063 | 5.228 | D = W + 0.010" | XXXX PDTB 05250 X XXXX |
| 5.375 | 5.188 | 5.353 | D = W + 0.010" | XXXX PDTB 05375 X XXXX |
| 5.500 | 5.313 | 5.478 | D = W + 0.010" | XXXX PDTB 05500 X XXXX |
| 5.625 | 5.438 | 5.603 | D = W + 0.010" | XXXX PDTB 05625 X XXXX |
| 5.750 | 5.563 | 5.728 | D = W + 0.010" | XXXX PDTB 05750 X XXXX |
| 5.875 | 5.688 | 5.853 | D = W + 0.010" | XXXX PDTB 05875 X XXXX |
| 6.000 | 5.813 | 5.978 | D = W + 0.010" | XXXX PDTB 06000 X XXXX |
| 6.125 | 5.938 | 6.103 | D = W + 0.010" | XXXX PDTB 06125 X XXXX |
| 6.250 | 6.063 | 6.228 | D = W + 0.010" | XXXX PDTB 06250 X XXXX |
| 6.375 | 6.188 | 6.353 | D = W + 0.010" | XXXX PDTB 06375 X XXXX |
| 6.500 | 6.313 | 6.478 | D = W + 0.010" | XXXX PDTB 06500 X XXXX |
| 6.750 | 6.563 | 6.728 | D = W + 0.010" | XXXX PDTB 06750 X XXXX |
| 7.000 | 6.813 | 6.978 | D = W + 0.010" | XXXX PDTB 07000 X XXXX |
| 7.250 | 7.063 | 7.228 | D = W + 0.010" | XXXX PDTB 07250 X XXXX |
| 7.500 | 7.313 | 7.478 | D = W + 0.010" | XXXX PDTB 07500 X XXXX |
| 7.750 | 7.563 | 7.728 | D = W + 0.010" | XXXX PDTB 07750 X XXXX |
| + .006/- .000 | + .000/- .004 | + .000/- .004 | + .010/- .000 | PDTB |
| 8.000 | 7.813 | 7.977 | D = W + 0.010" | XXXX PDTB 08000 X XXXX |
| 8.250 | 8.063 | 8.227 | D = W + 0.010" | XXXX PDTB 08250 X XXXX |
| 8.500 | 8.313 | 8.477 | D = W + 0.010" | XXXX PDTB 08500 X XXXX |
| 9.000 | 8.813 | 8.977 | D = W + 0.010" | XXXX PDTB 09000 X XXXX |
| 9.500 | 9.313 | 9.477 | D = W + 0.010" | XXXX PDTB 09500 X XXXX |
| 10.000 | 9.813 | 9.977 | D = W + 0.010" | XXXX PDTB 10000 X XXXX |
| + .002/- .000 | + .000/- .002 | + .000/- .002 | + .010/- .000 | PDTC |
| 2.000 | 1.749 | 1.979 | D = W + 0.010" | XXXX PDTC 02000 X XXXX |
| 2.125 | 1.874 | 2.104 | D = W + 0.010" | XXXX PDTC 02125 X XXXX |
| 2.250 | 1.999 | 2.229 | D = W + 0.010" | XXXX PDTC 02250 X XXXX |
| 2.375 | 2.124 | 2.354 | D = W + 0.010" | XXXX PDTC 02375 X XXXX |
| 2.500 | 2.249 | 2.479 | D = W + 0.010" | XXXX PDTC 02500 X XXXX |
| 2.625 | 2.374 | 2.604 | D = W + 0.010" | XXXX PDTC 02625 X XXXX |
| 2.750 | 2.499 | 2.729 | D = W + 0.010" | XXXX PDTC 02750 X XXXX |
| 2.875 | 2.624 | 2.854 | D = W + 0.010" | XXXX PDTC 02875 X XXXX |
| 3.000 | 2.749 | 2.979 | D = W + 0.010" | XXXX PDTC 03000 X XXXX |
| 3.125 | 2.874 | 3.104 | D = W + 0.010" | XXXX PDTC 03125 X XXXX |
| 3.250 | 2.999 | 3.229 | D = W + 0.010" | XXXX PDTC 03250 X XXXX |
| 3.375 | 3.124 | 3.354 | D = W + 0.010" | XXXX PDTC 03375 X XXXX |
| 3.500 | 3.249 | 3.479 | D = W + 0.010" | XXXX PDTC 03500 X XXXX |
| 3.625 | 3.374 | 3.604 | D = W + 0.010" | XXXX PDTC 03625 X XXXX |
| 3.750 | 3.499 | 3.729 | D = W + 0.010" | XXXX PDTC 03750 X XXXX |
| 3.875 | 3.624 | 3.854 | D = W + 0.010" | XXXX PDTC 03875 X XXXX |
| 4.000 | 3.749 | 3.979 | D = W + 0.010" | XXXX PDTC 04000 X XXXX |
| 4.125 | 3.874 | 4.104 | D = W + 0.010" | XXXX PDTC 04125 X XXXX |
| 4.250 | 3.999 | 4.229 | D = W + 0.010" | XXXX PDTC 04250 X XXXX |
| 4.375 | 4.124 | 4.354 | D = W + 0.010" | XXXX PDTC 04375 X XXXX |

For custom groove calculations, see Appendix C.

09/01/07

PDT Profile

Table 9-13. PDT Gland Dimensions (Piston, Cut-To-Length) — Inch (Continued)

| A Bore Diameter | B Groove Diameter | C Piston Diameter | D Groove Width | Part Number |
|----------------------|----------------------|----------------------|----------------------|------------------------|
| + .002/- .000 | + .000/- .002 | + .000/- .002 | + .010/- .000 | PDTC |
| 4.500 | 4.249 | 4.479 | D = W + 0.010" | XXXX PDTC 04500 X XXXX |
| 4.625 | 4.374 | 4.604 | D = W + 0.010" | XXXX PDTC 04625 X XXXX |
| 4.750 | 4.499 | 4.729 | D = W + 0.010" | XXXX PDTC 04750 X XXXX |
| 4.875 | 4.624 | 4.854 | D = W + 0.010" | XXXX PDTC 04875 X XXXX |
| + .004/- .000 | + .000/- .003 | + .000/- .003 | + .010/- .000 | PDTC |
| 5.000 | 4.749 | 4.978 | D = W + 0.010" | XXXX PDTC 05000 X XXXX |
| 5.125 | 4.874 | 5.103 | D = W + 0.010" | XXXX PDTC 05125 X XXXX |
| 5.250 | 4.999 | 5.228 | D = W + 0.010" | XXXX PDTC 05250 X XXXX |
| 5.375 | 5.124 | 5.353 | D = W + 0.010" | XXXX PDTC 05375 X XXXX |
| 5.500 | 5.249 | 5.478 | D = W + 0.010" | XXXX PDTC 05500 X XXXX |
| 5.625 | 5.374 | 5.603 | D = W + 0.010" | XXXX PDTC 05625 X XXXX |
| 5.750 | 5.499 | 5.728 | D = W + 0.010" | XXXX PDTC 05750 X XXXX |
| 5.875 | 5.624 | 5.853 | D = W + 0.010" | XXXX PDTC 05875 X XXXX |
| 6.000 | 5.749 | 5.978 | D = W + 0.010" | XXXX PDTC 06000 X XXXX |
| 6.125 | 5.874 | 6.103 | D = W + 0.010" | XXXX PDTC 06125 X XXXX |
| 6.250 | 5.999 | 6.228 | D = W + 0.010" | XXXX PDTC 06250 X XXXX |
| 6.375 | 6.124 | 6.353 | D = W + 0.010" | XXXX PDTC 06375 X XXXX |
| 6.500 | 6.249 | 6.478 | D = W + 0.010" | XXXX PDTC 06500 X XXXX |
| 6.750 | 6.499 | 6.728 | D = W + 0.010" | XXXX PDTC 06750 X XXXX |
| 7.000 | 6.749 | 6.978 | D = W + 0.010" | XXXX PDTC 07000 X XXXX |
| 7.250 | 6.999 | 7.228 | D = W + 0.010" | XXXX PDTC 07250 X XXXX |
| 7.500 | 7.249 | 7.478 | D = W + 0.010" | XXXX PDTC 07500 X XXXX |
| 7.750 | 7.499 | 7.728 | D = W + 0.010" | XXXX PDTC 07750 X XXXX |
| + .006/- .000 | + .000/- .004 | + .000/- .004 | + .010/- .000 | PDTC |
| 8.000 | 7.749 | 7.977 | D = W + 0.010" | XXXX PDTC 08000 X XXXX |
| 8.250 | 7.999 | 8.227 | D = W + 0.010" | XXXX PDTC 08250 X XXXX |
| 8.500 | 8.249 | 8.477 | D = W + 0.010" | XXXX PDTC 08500 X XXXX |
| 9.000 | 8.749 | 8.977 | D = W + 0.010" | XXXX PDTC 09000 X XXXX |
| 9.500 | 9.249 | 9.477 | D = W + 0.010" | XXXX PDTC 09500 X XXXX |
| 10.000 | 9.749 | 9.977 | D = W + 0.010" | XXXX PDTC 10000 X XXXX |
| 10.500 | 10.249 | 10.477 | D = W + 0.010" | XXXX PDTC 10500 X XXXX |
| 11.000 | 10.749 | 10.977 | D = W + 0.010" | XXXX PDTC 11000 X XXXX |
| 11.500 | 11.249 | 11.477 | D = W + 0.010" | XXXX PDTC 11500 X XXXX |
| 12.000 | 11.749 | 11.977 | D = W + 0.010" | XXXX PDTC 12000 X XXXX |
| 12.500 | 12.249 | 12.477 | D = W + 0.010" | XXXX PDTC 12500 X XXXX |
| 13.000 | 12.749 | 12.977 | D = W + 0.010" | XXXX PDTC 13000 X XXXX |
| 13.500 | 13.249 | 13.477 | D = W + 0.010" | XXXX PDTC 13500 X XXXX |
| 14.000 | 13.749 | 13.977 | D = W + 0.010" | XXXX PDTC 14000 X XXXX |
| 14.500 | 14.249 | 14.477 | D = W + 0.010" | XXXX PDTC 14500 X XXXX |
| 15.000 | 14.749 | 14.977 | D = W + 0.010" | XXXX PDTC 15000 X XXXX |
| 15.500 | 15.249 | 15.477 | D = W + 0.010" | XXXX PDTC 15500 X XXXX |
| 16.000 | 15.749 | 15.977 | D = W + 0.010" | XXXX PDTC 16000 X XXXX |

For custom groove calculations, see Appendix C.

NOTE: For sizes larger than those shown in the table, please contact your local Parker Seal representative.

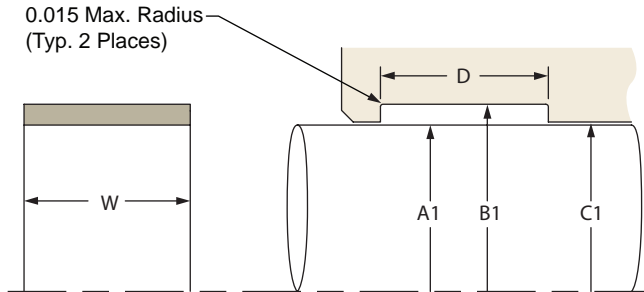
09/01/07



PDT Groove Calculation

See Piston and Rod Wear Ring Groove Calculations in Appendix C.

Gland Dimensions — PDT Profile, Rod (Cut-To-Length)



Please refer to Engineering Section 2, page 2-8 for surface finish and additional hardware considerations.

Table 9-14. PDT Gland Dimensions (Rod, Cut-To-Length) — Inch

| A1 Rod Diameter | B1 Groove Diameter | C1 Piston Diameter | D Groove Width | Part Number |
|----------------------|----------------------|----------------------|----------------------|------------------------|
| + .000/- .002 | + .002/- .000 | + .002/- .000 | + .010/- .000 | PDTD |
| 0.875 | 1.000 | 0.896 | D = W + 0.010" | XXXX PDTD 00875 X XXXX |
| 0.937 | 1.062 | 0.958 | D = W + 0.010" | XXXX PDTD 00937 X XXXX |
| 1.000 | 1.125 | 1.021 | D = W + 0.010" | XXXX PDTD 01000 X XXXX |
| 1.062 | 1.187 | 1.083 | D = W + 0.010" | XXXX PDTD 01062 X XXXX |
| 1.125 | 1.250 | 1.146 | D = W + 0.010" | XXXX PDTD 01125 X XXXX |
| 1.187 | 1.312 | 1.208 | D = W + 0.010" | XXXX PDTD 01187 X XXXX |
| 1.250 | 1.375 | 1.271 | D = W + 0.010" | XXXX PDTD 01250 X XXXX |
| 1.312 | 1.437 | 1.333 | D = W + 0.010" | XXXX PDTD 01312 X XXXX |
| 1.375 | 1.500 | 1.396 | D = W + 0.010" | XXXX PDTD 01375 X XXXX |
| 1.437 | 1.562 | 1.458 | D = W + 0.010" | XXXX PDTD 01437 X XXXX |
| 1.500 | 1.625 | 1.521 | D = W + 0.010" | XXXX PDTD 01500 X XXXX |
| 1.625 | 1.750 | 1.646 | D = W + 0.010" | XXXX PDTD 01625 X XXXX |
| 1.750 | 1.875 | 1.771 | D = W + 0.010" | XXXX PDTD 01750 X XXXX |
| 1.875 | 2.000 | 1.896 | D = W + 0.010" | XXXX PDTD 01875 X XXXX |
| 2.000 | 2.125 | 2.021 | D = W + 0.010" | XXXX PDTD 02000 X XXXX |
| + .000/- .002 | + .002/- .000 | + .002/- .000 | + .010/- .000 | PDTE |
| 1.500 | 1.687 | 1.521 | D = W + 0.010" | XXXX PDTE 01500 X XXXX |
| 1.625 | 1.812 | 1.646 | D = W + 0.010" | XXXX PDTE 01625 X XXXX |
| 1.750 | 1.937 | 1.771 | D = W + 0.010" | XXXX PDTE 01750 X XXXX |
| 1.875 | 2.062 | 1.896 | D = W + 0.010" | XXXX PDTE 01875 X XXXX |
| 2.000 | 2.187 | 2.021 | D = W + 0.010" | XXXX PDTE 02000 X XXXX |
| 2.125 | 2.312 | 2.146 | D = W + 0.010" | XXXX PDTE 02125 X XXXX |
| 2.250 | 2.437 | 2.271 | D = W + 0.010" | XXXX PDTE 02250 X XXXX |
| 2.375 | 2.562 | 2.396 | D = W + 0.010" | XXXX PDTE 02375 X XXXX |
| 2.500 | 2.687 | 2.521 | D = W + 0.010" | XXXX PDTE 02500 X XXXX |
| 2.625 | 2.812 | 2.646 | D = W + 0.010" | XXXX PDTE 02625 X XXXX |
| 2.750 | 2.937 | 2.771 | D = W + 0.010" | XXXX PDTE 02750 X XXXX |
| 2.875 | 3.062 | 2.896 | D = W + 0.010" | XXXX PDTE 02875 X XXXX |
| 3.000 | 3.187 | 3.021 | D = W + 0.010" | XXXX PDTE 03000 X XXXX |

For custom groove calculations, see Appendix C.

09/01/07



PDT Profile

Table 9-14. PDT Gland Dimensions (Rod, Cut-To-Length) — Inch (Continued)

| A1 Rod Diameter | B1 Groove Diameter | C1 Piston Diameter | D Groove Width | Part Number |
|----------------------|-----------------------|-----------------------|----------------------|------------------------|
| +0.000/-0.002 | +0.002/-0.000 | +0.002/-0.000 | +0.010/-0.000 | PDTE |
| 3.125 | 3.312 | 3.146 | D = W + 0.010" | XXXX PDTE 03125 X XXXX |
| 3.250 | 3.437 | 3.271 | D = W + 0.010" | XXXX PDTE 03250 X XXXX |
| 3.375 | 3.562 | 3.396 | D = W + 0.010" | XXXX PDTE 03375 X XXXX |
| 3.500 | 3.687 | 3.521 | D = W + 0.010" | XXXX PDTE 03500 X XXXX |
| 3.625 | 3.812 | 3.646 | D = W + 0.010" | XXXX PDTE 03625 X XXXX |
| 3.750 | 3.937 | 3.771 | D = W + 0.010" | XXXX PDTE 03750 X XXXX |
| 3.875 | 4.062 | 3.896 | D = W + 0.010" | XXXX PDTE 03875 X XXXX |
| 4.000 | 4.187 | 4.021 | D = W + 0.010" | XXXX PDTE 04000 X XXXX |
| 4.125 | 4.312 | 4.146 | D = W + 0.010" | XXXX PDTE 04125 X XXXX |
| 4.250 | 4.437 | 4.271 | D = W + 0.010" | XXXX PDTE 04250 X XXXX |
| 4.375 | 4.562 | 4.396 | D = W + 0.010" | XXXX PDTE 04375 X XXXX |
| 4.500 | 4.687 | 4.521 | D = W + 0.010" | XXXX PDTE 04500 X XXXX |
| 4.625 | 4.812 | 4.646 | D = W + 0.010" | XXXX PDTE 04625 X XXXX |
| 4.750 | 4.937 | 4.771 | D = W + 0.010" | XXXX PDTE 04750 X XXXX |
| 4.875 | 5.062 | 4.896 | D = W + 0.010" | XXXX PDTE 04875 X XXXX |
| 5.000 | 5.187 | 5.021 | D = W + 0.010" | XXXX PDTE 05000 X XXXX |
| +0.000/-0.002 | +0.002/-0.000 | +0.002/-0.000 | +0.010/-0.000 | PDTF |
| 1.500 | 1.751 | 1.521 | D = W + 0.010" | XXXX PDTF 01500 X XXXX |
| 1.625 | 1.876 | 1.646 | D = W + 0.010" | XXXX PDTF 01625 X XXXX |
| 1.750 | 2.001 | 1.771 | D = W + 0.010" | XXXX PDTF 01750 X XXXX |
| 1.875 | 2.126 | 1.896 | D = W + 0.010" | XXXX PDTF 01875 X XXXX |
| 2.000 | 2.251 | 2.021 | D = W + 0.010" | XXXX PDTF 02000 X XXXX |
| 2.125 | 2.376 | 2.146 | D = W + 0.010" | XXXX PDTF 02125 X XXXX |
| 2.250 | 2.501 | 2.271 | D = W + 0.010" | XXXX PDTF 02250 X XXXX |
| 2.375 | 2.626 | 2.396 | D = W + 0.010" | XXXX PDTF 02375 X XXXX |
| 2.500 | 2.751 | 2.521 | D = W + 0.010" | XXXX PDTF 02500 X XXXX |
| 2.625 | 2.876 | 2.646 | D = W + 0.010" | XXXX PDTF 02625 X XXXX |
| 2.750 | 3.001 | 2.771 | D = W + 0.010" | XXXX PDTF 02750 X XXXX |
| 2.875 | 3.126 | 2.896 | D = W + 0.010" | XXXX PDTF 02875 X XXXX |
| 3.000 | 3.251 | 3.021 | D = W + 0.010" | XXXX PDTF 03000 X XXXX |
| 3.125 | 3.376 | 3.146 | D = W + 0.010" | XXXX PDTF 03125 X XXXX |
| +0.000/-0.002 | +0.002/-0.000 | +0.002/-0.000 | +0.010/-0.000 | PDTF |
| 3.250 | 3.501 | 3.271 | D = W + 0.010" | XXXX PDTF 03250 X XXXX |
| 3.375 | 3.626 | 3.396 | D = W + 0.010" | XXXX PDTF 03375 X XXXX |
| 3.500 | 3.751 | 3.521 | D = W + 0.010" | XXXX PDTF 03500 X XXXX |
| 3.625 | 3.876 | 3.646 | D = W + 0.010" | XXXX PDTF 03625 X XXXX |
| 3.750 | 4.001 | 3.771 | D = W + 0.010" | XXXX PDTF 03750 X XXXX |
| 3.875 | 4.126 | 3.896 | D = W + 0.010" | XXXX PDTF 03875 X XXXX |
| 4.000 | 4.251 | 4.021 | D = W + 0.010" | XXXX PDTF 04000 X XXXX |
| 4.125 | 4.376 | 4.146 | D = W + 0.010" | XXXX PDTF 04125 X XXXX |
| 4.250 | 4.501 | 4.271 | D = W + 0.010" | XXXX PDTF 04250 X XXXX |
| 4.375 | 4.626 | 4.396 | D = W + 0.010" | XXXX PDTF 04375 X XXXX |
| 4.500 | 4.751 | 4.521 | D = W + 0.010" | XXXX PDTF 04500 X XXXX |
| 4.625 | 4.876 | 4.646 | D = W + 0.010" | XXXX PDTF 04625 X XXXX |

For custom groove calculations, see Appendix C.

09/01/07

Table 9-14. PDT Gland Dimensions (Rod, Cut-To-Length) — Inch (Continued)

| A1 Rod Diameter | B1 Groove Diameter | C1 Piston Diameter | D Groove Width | Part Number |
|--------------------|-----------------------|-----------------------|--------------------|------------------------|
| +.000/-.004 | +.003/-.000 | +.003/-.000 | +.010/-.000 | PDTF |
| 4.750 | 5.001 | 4.772 | D = W + 0.010" | XXXX PDTF 04750 X XXXX |
| 4.875 | 5.126 | 4.897 | D = W + 0.010" | XXXX PDTF 04875 X XXXX |
| 5.000 | 5.251 | 5.022 | D = W + 0.010" | XXXX PDTF 05000 X XXXX |
| 5.125 | 5.376 | 5.147 | D = W + 0.010" | XXXX PDTF 05125 X XXXX |
| 5.250 | 5.501 | 5.272 | D = W + 0.010" | XXXX PDTF 05250 X XXXX |
| 5.375 | 5.626 | 5.397 | D = W + 0.010" | XXXX PDTF 05375 X XXXX |
| 5.500 | 5.751 | 5.522 | D = W + 0.010" | XXXX PDTF 05500 X XXXX |
| 5.625 | 5.876 | 5.647 | D = W + 0.010" | XXXX PDTF 05625 X XXXX |
| 5.750 | 6.001 | 5.772 | D = W + 0.010" | XXXX PDTF 05750 X XXXX |
| 5.875 | 6.126 | 5.897 | D = W + 0.010" | XXXX PDTF 05875 X XXXX |
| 6.000 | 6.251 | 6.022 | D = W + 0.010" | XXXX PDTF 06000 X XXXX |
| 6.250 | 6.501 | 6.272 | D = W + 0.010" | XXXX PDTF 06250 X XXXX |
| 6.500 | 6.751 | 6.522 | D = W + 0.010" | XXXX PDTF 06500 X XXXX |
| 6.750 | 7.001 | 6.772 | D = W + 0.010" | XXXX PDTF 06750 X XXXX |
| 7.000 | 7.251 | 7.022 | D = W + 0.010" | XXXX PDTF 07000 X XXXX |
| 7.250 | 7.501 | 7.272 | D = W + 0.010" | XXXX PDTF 07250 X XXXX |
| 7.500 | 7.751 | 7.522 | D = W + 0.010" | XXXX PDTF 07500 X XXXX |
| +.000/-.006 | +.004/-.000 | +.004/-.000 | +.010/-.000 | PDTF |
| 7.750 | 8.001 | 7.773 | D = W + 0.010" | XXXX PDTF 07750 X XXXX |
| 8.000 | 8.251 | 8.023 | D = W + 0.010" | XXXX PDTF 08000 X XXXX |
| 8.500 | 8.751 | 8.523 | D = W + 0.010" | XXXX PDTF 08500 X XXXX |
| 9.000 | 9.251 | 9.023 | D = W + 0.010" | XXXX PDTF 09000 X XXXX |
| 9.500 | 9.751 | 9.523 | D = W + 0.010" | XXXX PDTF 09500 X XXXX |
| 10.000 | 10.251 | 10.023 | D = W + 0.010" | XXXX PDTF 10000 X XXXX |

For custom groove calculations, see Appendix C.

NOTE: For sizes larger than those shown in the table, please contact your local Parker Seal representative.

PDT Rod Groove Calculation

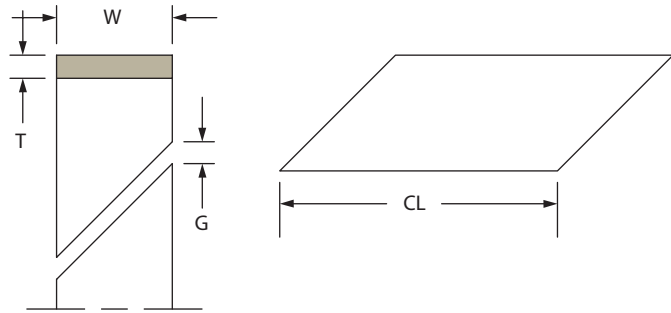
See Rod Wear Ring Groove Calculation in Appendix C.

PDT Profile

PDT Bulk Strip

Table 9-15. PDT Bulk Strip Standard Sizes

| T Radial Cross-Section | W Width | Part Number |
|------------------------------|------------|--------------------|
| 062 | | |
| 0.062 | 0.250 | XXXX PDTH 062-0250 |
| 0.062 | 0.375 | XXXX PDTH 062-0375 |
| 0.062 | 0.500 | XXXX PDTH 062-0500 |
| 0.062 | 0.625 | XXXX PDTH 062-0625 |
| 093 | | |
| 0.093 | 0.250 | XXXX PDTH 093-0250 |
| 0.093 | 0.375 | XXXX PDTH 093-0375 |
| 0.093 | 0.500 | XXXX PDTH 093-0500 |
| 0.093 | 0.625 | XXXX PDTH 093-0625 |
| 125 | | |
| 0.125 | 0.250 | XXXX PDTH 125-0250 |
| 0.125 | 0.375 | XXXX PDTH 125-0375 |
| 0.125 | 0.500 | XXXX PDTH 125-0500 |
| 0.125 | 0.625 | XXXX PDTH 125-0625 |
| 0.125 | 0.750 | XXXX PDTH 125-0750 |
| 0.125 | 1.000 | XXXX PDTH 125-1000 |



NOTE: For sizes larger than those shown in the table, please contact your local Parker Seal representative.

Cutting Instructions

Table 9-16. Recommended Cutting Instructions

| Rod or Bore Diameter | G Minimum Gap | CL ± Tolerance for Cut Length |
|----------------------|------------------|----------------------------------|
| 0.500" - 1.750" | 0.075 | ± .010 |
| 1.751" - 3.125" | 0.140 | ± .016 |
| 3.126" - 4.000" | 0.175 | ± .024 |
| 4.001" - 5.000" | 0.230 | ± .032 |
| 5.001" - 6.000" | 0.260 | ± .040 |
| 6.001" - 7.000" | 0.320 | ± .047 |
| 7.001" - 8.500" | 0.380 | ± .055 |
| 8.501" - 10.500" | 0.480 | ± .063 |
| 10.501" - 13.000" | 0.620 | ± .071 |
| 13.001" - 16.000" | 0.750 | ± .079 |

NOTE: For sizes larger than those shown in the table, please contact your local Parker Seal representative.

Formula for Calculating Cut Length, CL

For Pistons:

$$CL = [(Bore Diameter - T) \times \pi] - G$$

For Rods:

$$CL = [(Rod Diameter + T) \times \pi] - G$$

To calculate groove dimensions, use either the pre-established values or the formulas for cut-to-length PDT strip found on Pages 9-23 and 9-26.



09/01/07