

A compact 15mm, 3-way subbase or manifold mounted valve. Ideally suited for use in stationary or mobile equipment applications, where flow rates and low temperatures are a key consideration.

### Features

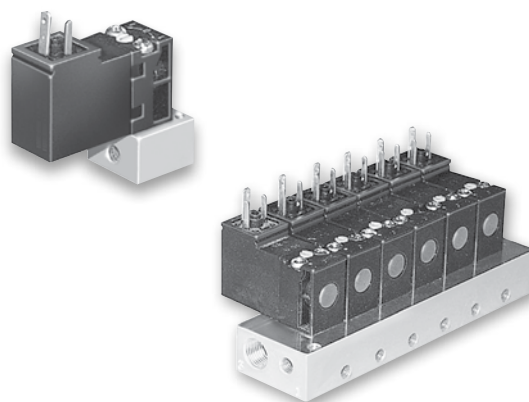
- Compact and simple design
- Utilizes 15mm solenoid operators
- Manifold allows mounting of normally open and normally closed operators simultaneously
- Up to 20 stations available

### Solenoids

- 15mm low watt solenoids are UL certified and approved to be CE marked
- Wide range of voltages available

### Applications

- Piloting for process control valves
  - pharmaceutical equipment
  - waste water treatment systems
  - food processing
  - chemical batching
- Industrial laundry equipment
- Paint spray & dyeing equipment
- Textile winding applications
- Vacuum and conveyor applications



### Operating information

Operating pressure:	Vacuum to 145 PSIG (Vacuum to 10 bar)
Operating temperature:	
Standard Flow:	5°F to 140°F (-15°C to 60°C)
High Flow:	5°F to 122°F (-15°C to 50°C)
Mobile Applications	
(47 & 48 Voltage Options):	-40°F to 158°F (-40°C to 70°C)
Storage temperature:	
All applications:	-40°F to 158°F (-40°C to 70°C)

### Material specifications

Body	Glass filled polyamide
Internal metal parts	Steel
Screws	Steel
Bottom plug	Thermoplastic
Poppet seals	Nitrile for standard, fluorocarbon for mobile

### Technical data

Electrical interface per:	Din 43650 Form C (EN175301-803C)
Pneumatic interface per:	AFNOR E 0652 110 N
Protection:	IP65 (Washdown)
Air flow:	Standard flow 0.033 Cv (33 Lpm) (1.2W) (1.6VA)
Voltage tolerance:	All voltages except 47 & 48: Rated voltage +10% / -15% options 47 & 48: Rated voltage +25% / -30%

Most popular. For technical information see CD

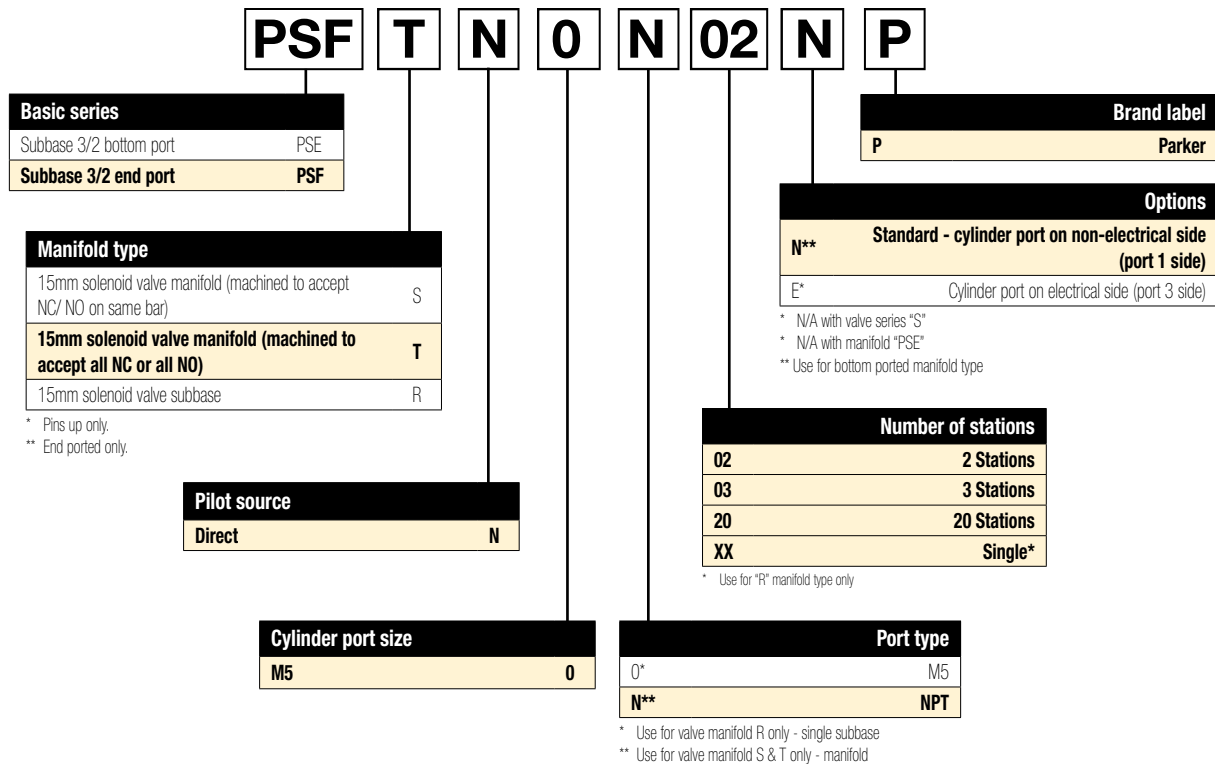


## NC (NNP) Solenoids / Kits

	## Voltage (S = Standard, O = Optional, — = N/A)					
* Override	42 (24VAC)	45 (12VDC)	49 (24VDC)	53 (120VAC)	57 (230VAC)	Kit No.
B (Non-lock, Flush)	O	O	S	S	O	<b>PS2982*##P</b> Pins: UP NC / NNP 1.2W / 1.6VA
C (Lock, Flush)	O	O	S	S	O	
D (Non-lock, Ext)	—	—	O	O	—	
B (Non-lock, Flush)	O	O	S	S	—	<b>PS3541*##P</b> Pins: DOWN NC / NNP 1.8W / 2.4VA
C (Lock, Flush)	O	O	S	S	—	
D (Non-lock, Ext)	—	—	O	O	—	
E (Lock, Ext)	—	—	O	O	—	<b>PS3441*##P</b> Pins: DOWN NC / NNP 1.2W / 1.6VA
B (Non-lock, Flush)	O	O	O	O	O	
C (Lock, Flush)	O	O	O	O	O	<b>PS3202*##P</b> Pins: UP NO / NP 1.2W / 1.6VA
B (Non-lock, Flush)	O	O	S	S	—	

\* Override  
 ## Voltage

## Model Number Index



### Examples:

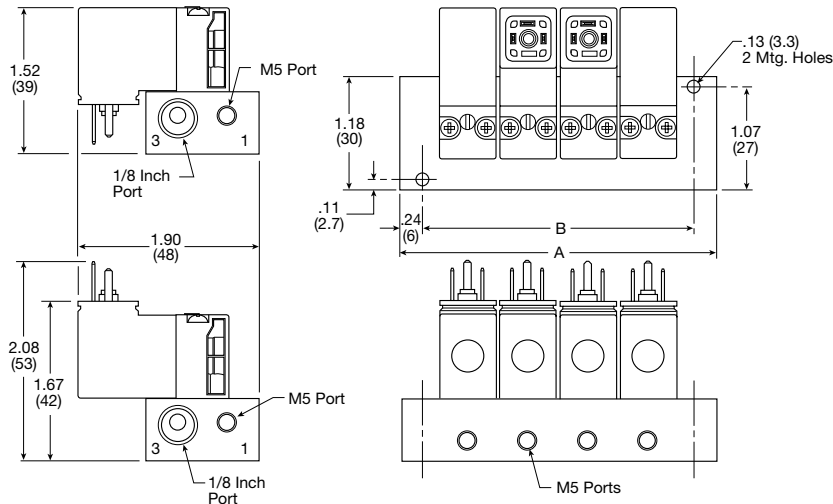
PSFTN0N16EP - End port manifold - Cyl ports and electrical on same side  
 PSES0N0N10NP - Bottom port manifold - N/C and N/O can be interchanged  
 PSFTN0N10NP - End port manifold - Cyl ports and electrical are opposite

**BOLD OPTIONS ARE MOST POPULAR.**



**Manifold Dimensions**

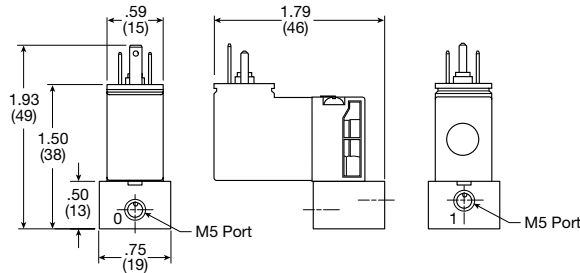
Special mounting considerations must be made for connector assembly clearance when mounting solenoid valves with pins down.



Number of stations	Dim. A	Dim. B
2	2.04 (52)	1.57 (40)
3	2.68 (68)	2.20 (56)
4	3.31 (84)	2.83 (72)
5	3.94 (100)	3.46 (88)
6	4.57 (116)	4.09 (104)
7	5.20 (132)	4.72 (120)
8	5.83 (148)	5.35 (136)
9	6.46 (164)	5.98 (152)
10	7.09 (180)	6.61 (168)
11	7.72 (196)	7.24 (184)
12	8.35 (212)	7.87 (200)
13	8.98 (228)	8.50 (216)
14	9.61 (244)	9.13 (232)
15	10.23 (260)	9.76 (248)
16	10.87 (276)	10.39 (264)
17	11.50 (292)	11.02 (280)
18	12.13 (308)	11.65 (296)
19	12.76 (324)	12.28 (312)
20	13.39 (340)	12.91 (328)

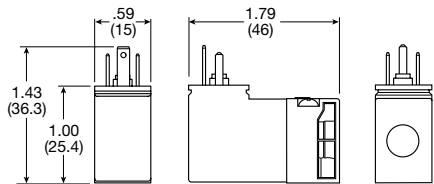
**Subbase Dimensions**

Pins up only.



**15mm Solenoid Dimensions**

Pins up only.



**Female Electrical Connectors**

**15mm 3-Pin DIN 43650C (Use with enclosure "5")**

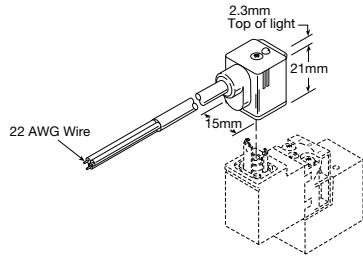
Description	Connector	Connector with cord
Unlighted 18 Inches	PS2932BP	PS2932HBP
Unlighted 6 Feet	PS2932BP	PS2932JBP
Light – 12VAC or DC 6 Feet	PS294675BP	PS2946J75BP*
Light – 24VAC or DC 6 Feet	PS294679BP	PS2946J79BP*
Light – 110/120VAC 6 Feet	PS294683BP	PS2946J83BP*
Light – 240/230VAC	PS294687BP	N/A

\* LED with surge suppression.

**Note:** Max ø6.5mm cable size required for connector w/o 6' (2m) cord.  
IP65 rated when properly installed.

**Engineering Data:**

Conductors: 2 poles plus ground  
Cable range (Connector only): 4 to 6mm (0.16 to 0.24 Inch)  
Contact spacing: 8mm



**Molded 6'  
Cord Shown**

