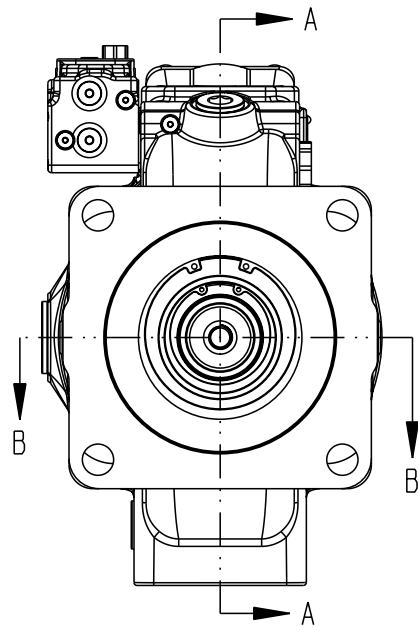
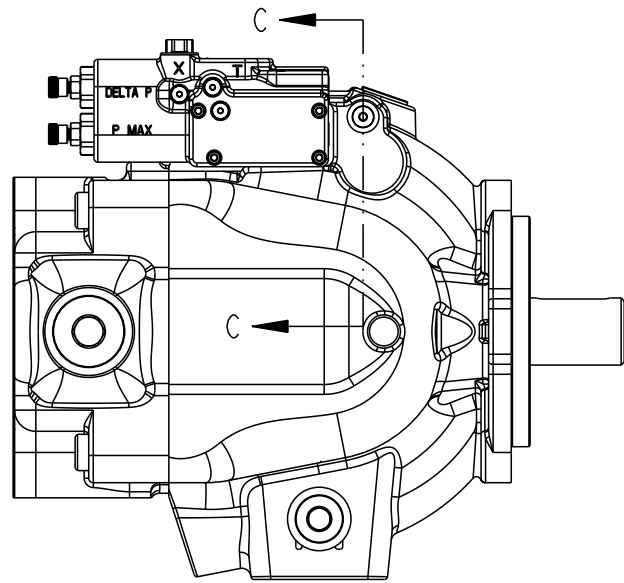
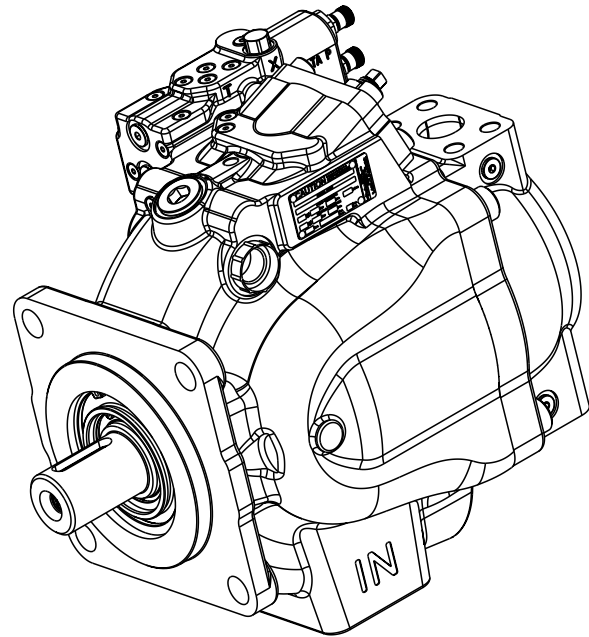
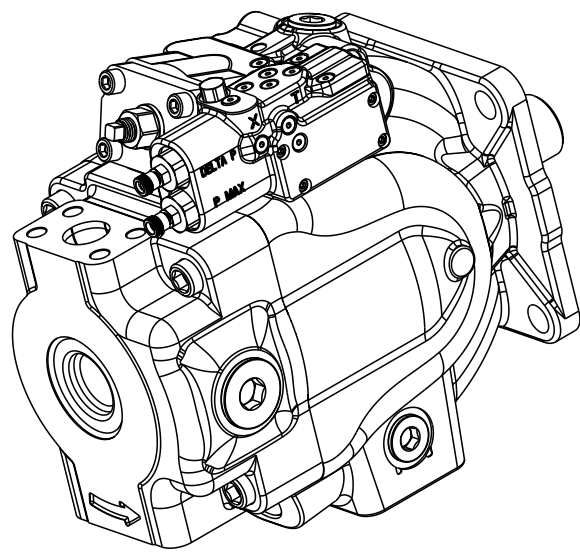
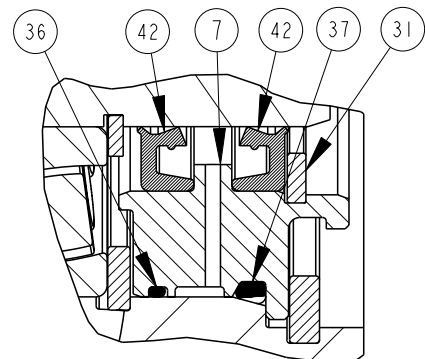
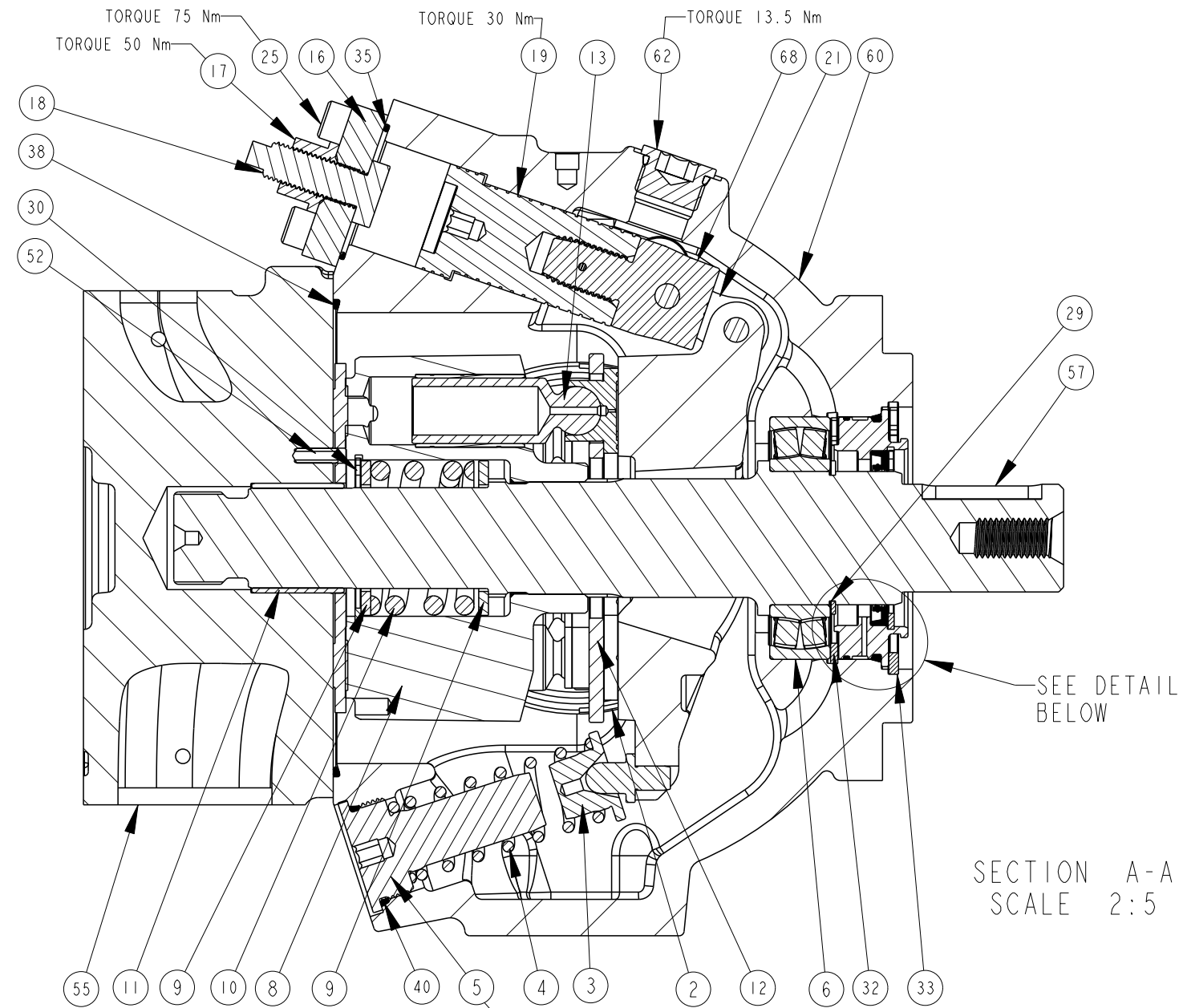


TITLE	SERVICE PARTS P2145 DESIGN SERIES 13	DRAWING NUMBER	P2-145-0407	REVISION	A	STATUS	PR	SHEET 1 OF 7
-------	---	----------------	-------------	----------	---	--------	----	--------------

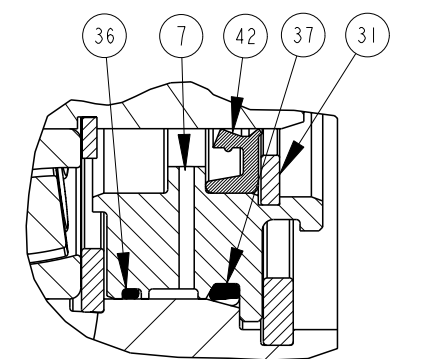
DRAWN BY	HOEY	DATE	22NOV04	CHANGED BY	J. LAMBERS	DATE	20FEB06	ECN NUMBER	134572
----------	------	------	---------	------------	------------	------	---------	------------	--------



NOTES:
1 PUMP SHOWN IS A RIGHT HAND (CW) ROTATION PUMP. LEFT HAND (CCW) ROTATION PUMPS HAVE OUTLET GAUGE PORT REVERSED.



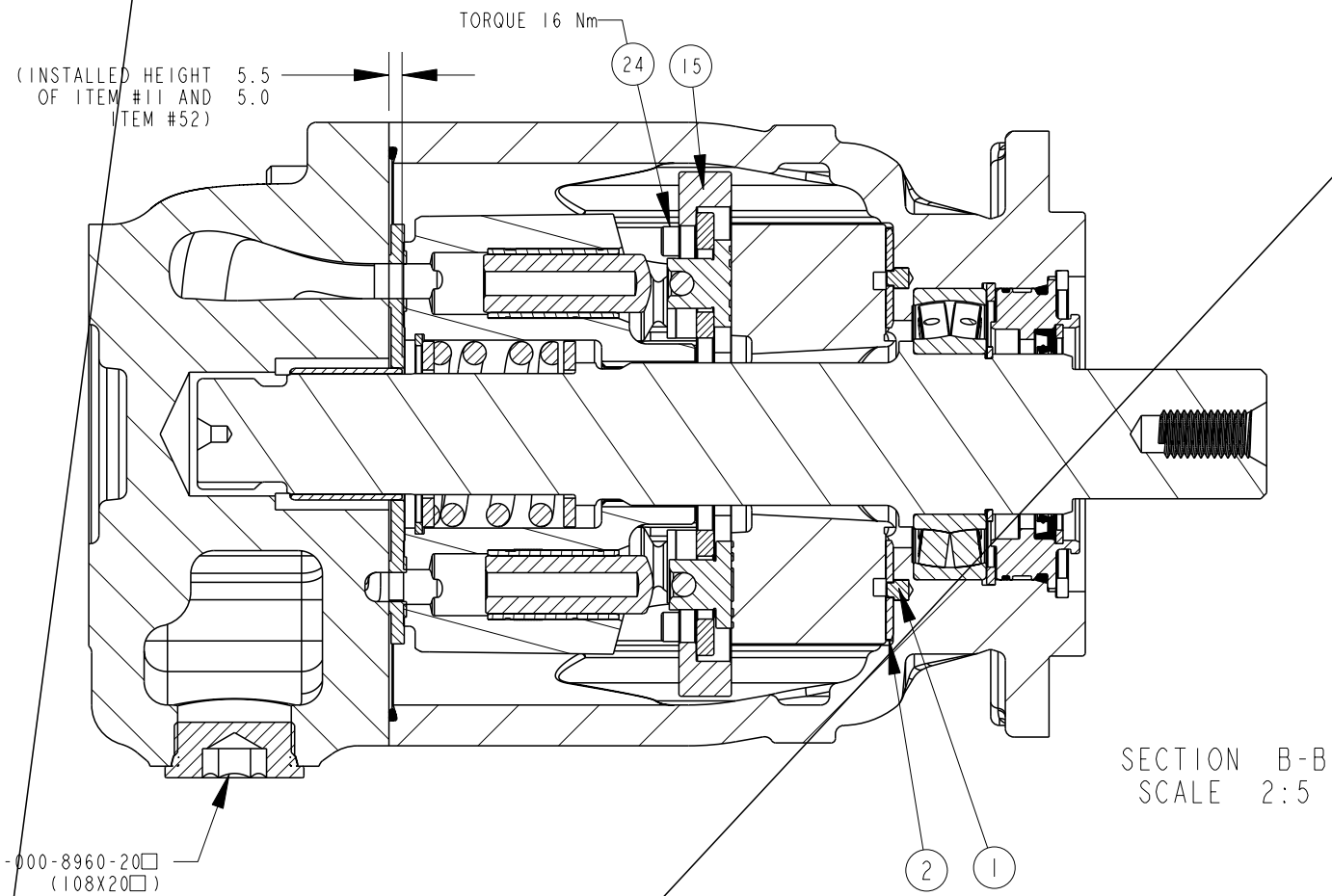
DUAL SHAFT SEAL ASSEMBLY
P2-105-0210-02□
SECTION A-A
SCALE 1:1



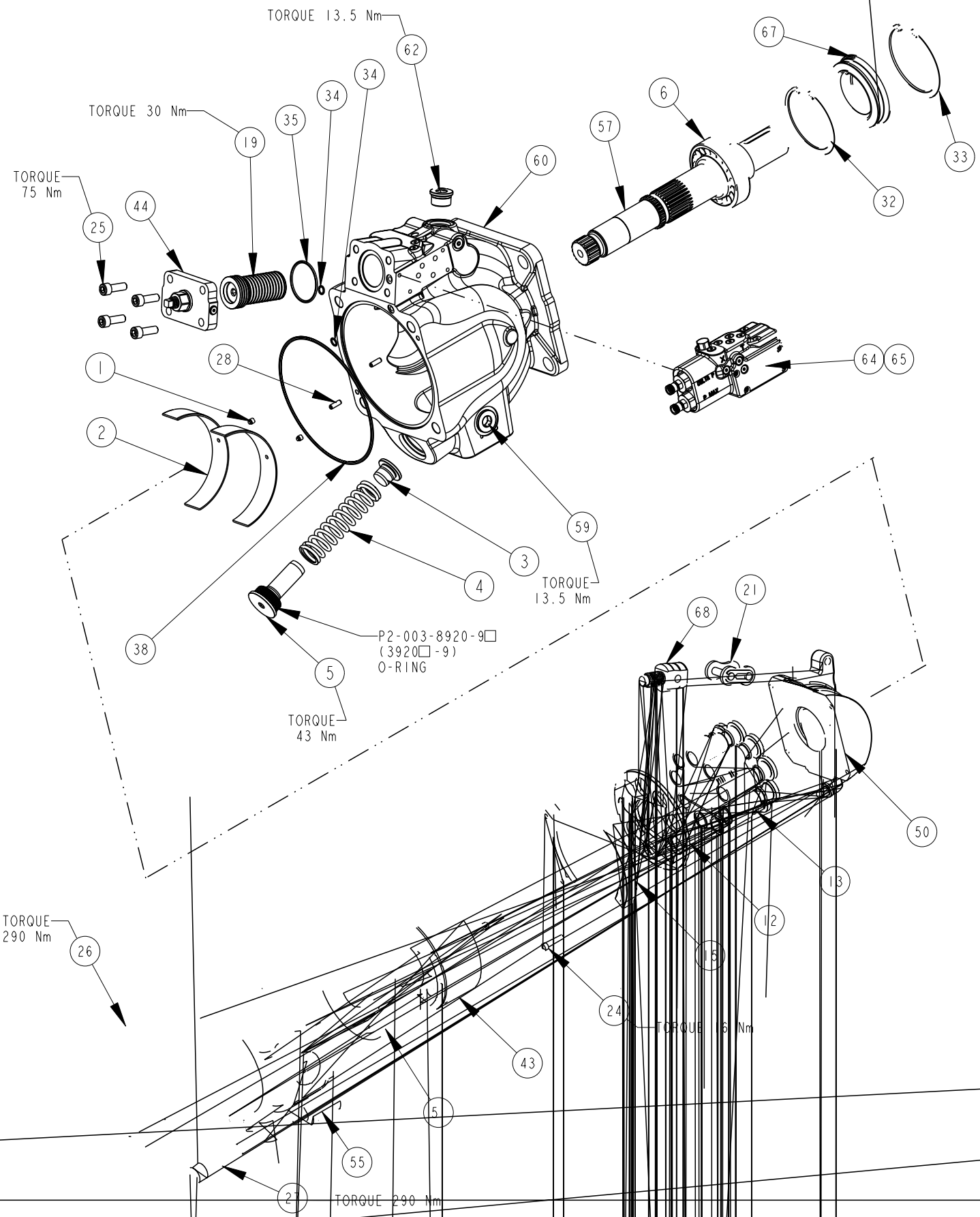
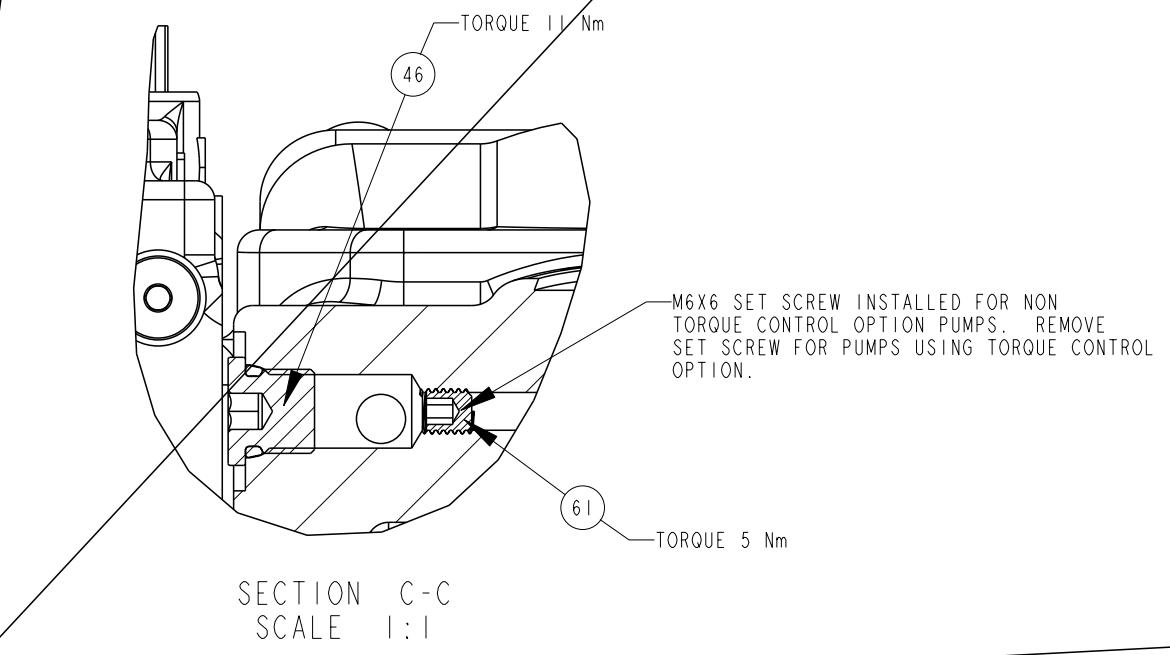
SINGLE SHAFT SEAL ASSEMBLY
P2-105-0210-01□
SECTION A-A
SCALE 1:1

TITLE	DRAWING NUMBER	REVISION	STATUS	SHEET 2 OF 7
SERVICE PARTS P2145 DESING SERIES 13	P2-145-0407	A	PR	

DRAWN BY	DATE	CHANGED BY	DATE	ECN NUMBER
HOEY	22NOV04	J. LAMBERS	20FEB06	134572



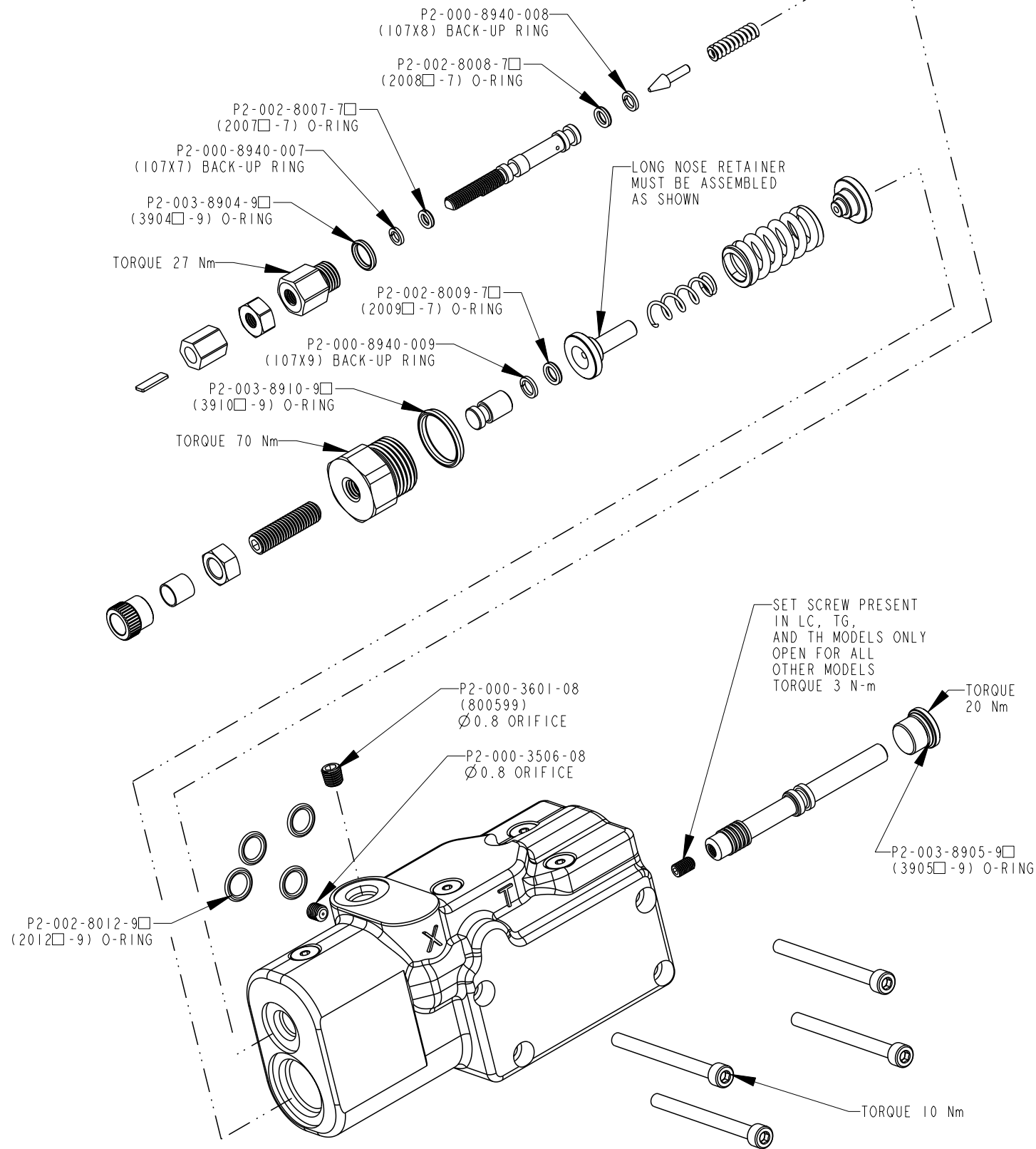
SAE: P2-000-8960-20□
(108X20□)
6149: P2-000-8964-20□
(788516-20□)
TORQUE 425 Nm



TITLE	DRAWING NUMBER	REVISION	STATUS	SHEET
SERVICE PARTS P2145 DESIGN SERIES 13	P2-145-0407	A	PR	3 OF 7

COMPENSATOR KITS

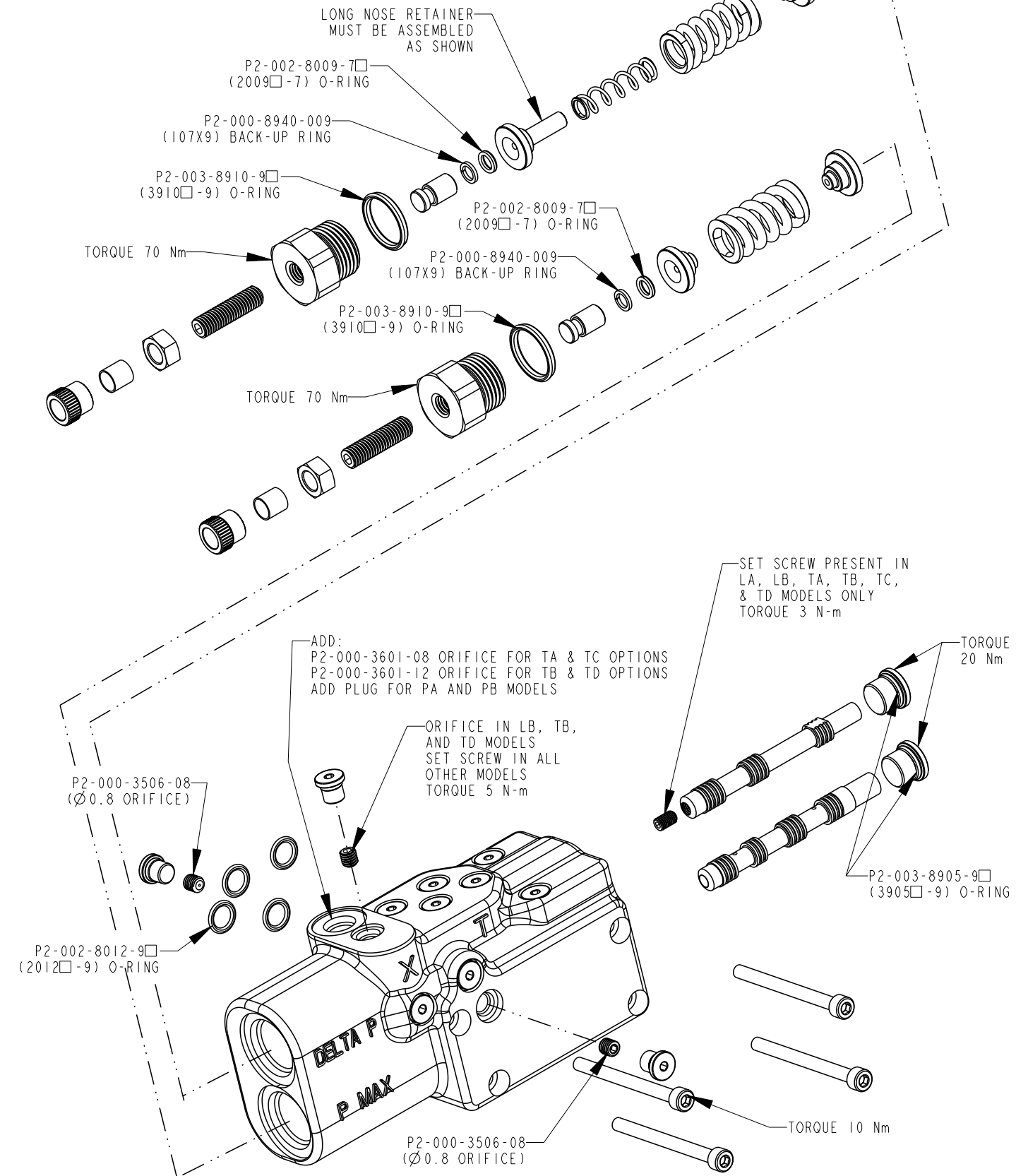
SINGLE SPOOL OPTIONS - ITEM 64



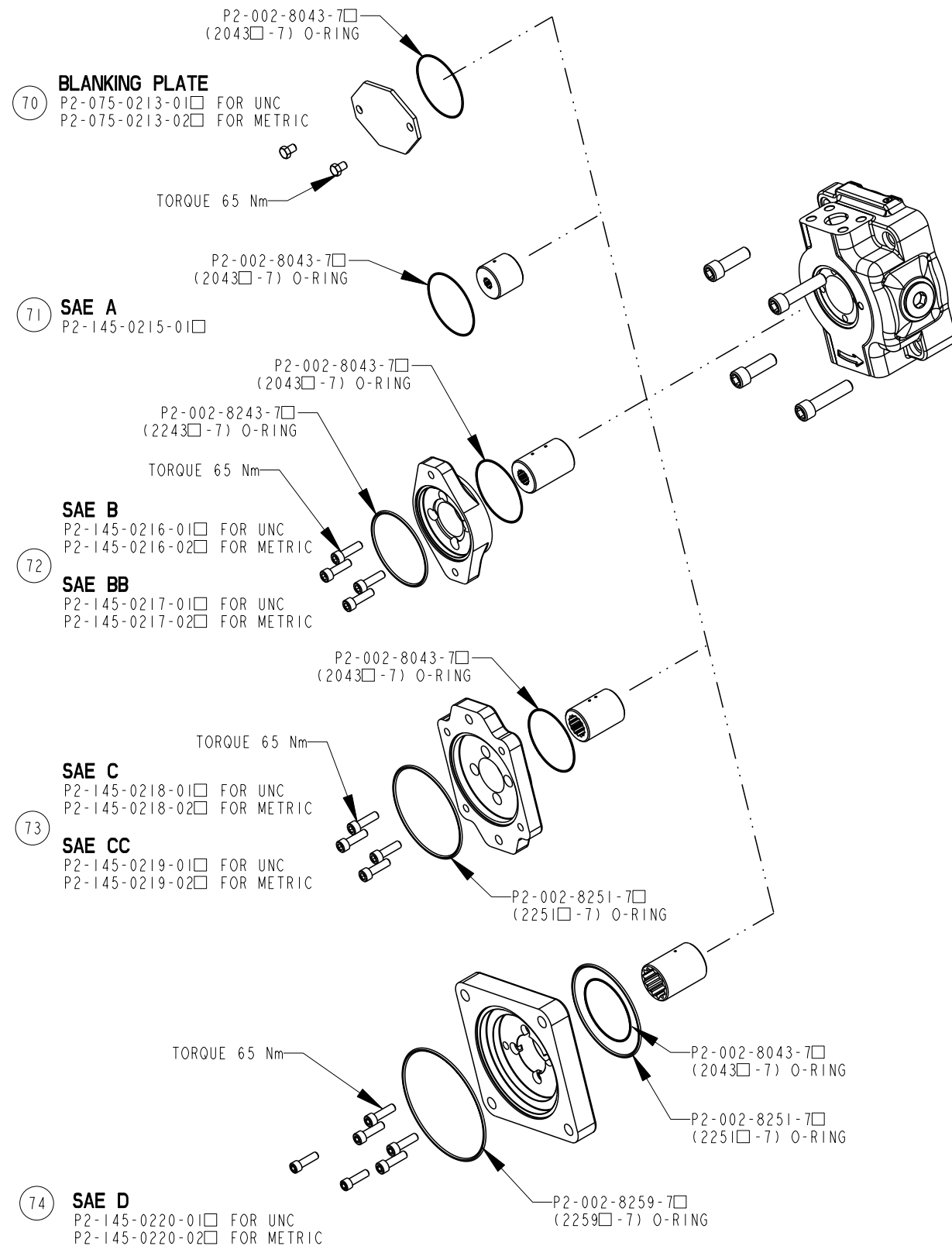
DRAWN BY	DATE	CHANGED BY	DATE	ECN NUMBER
HOEY	22NOV04	J. LAMBERS	20FEB06	134572

COMPENSATOR KITS

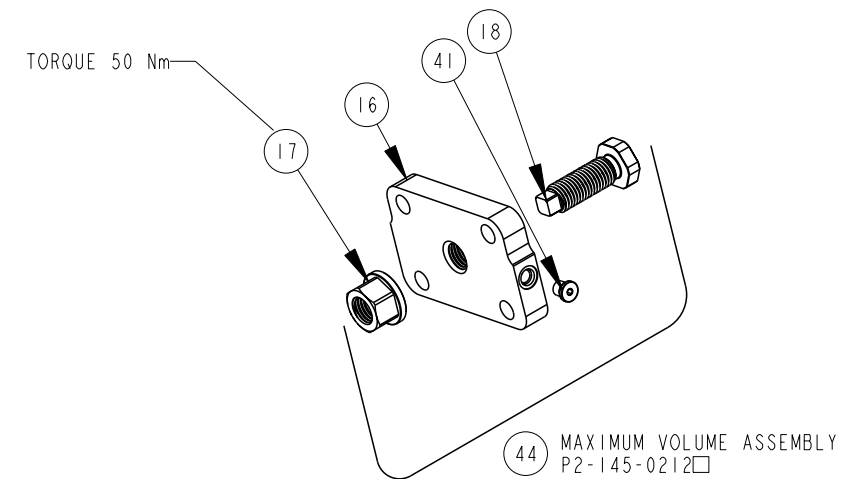
DUAL SPOOL OPTIONS - ITEM 65



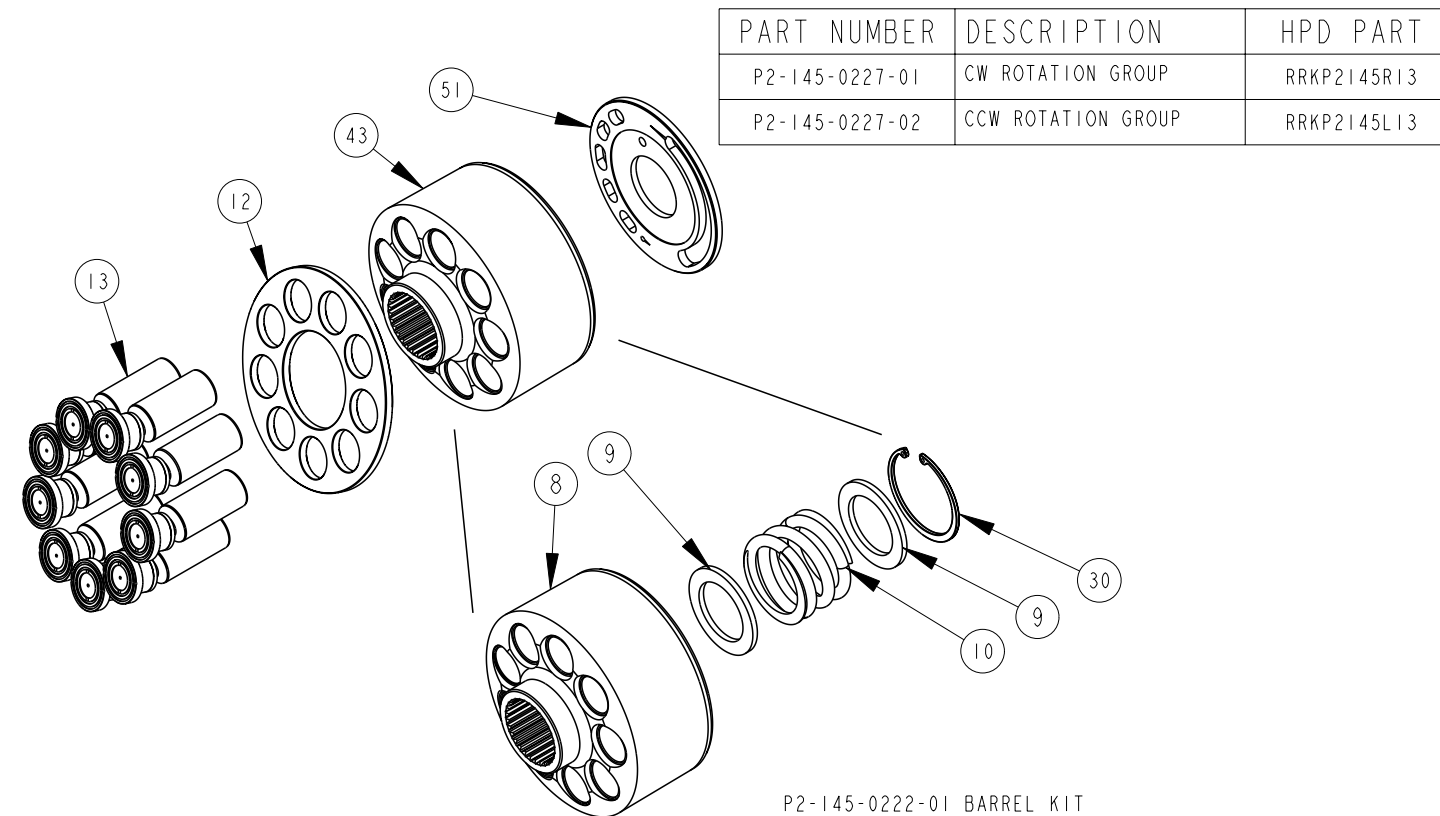
THRU DRIVE KITS



MAX VOLUME ASSEMBLY

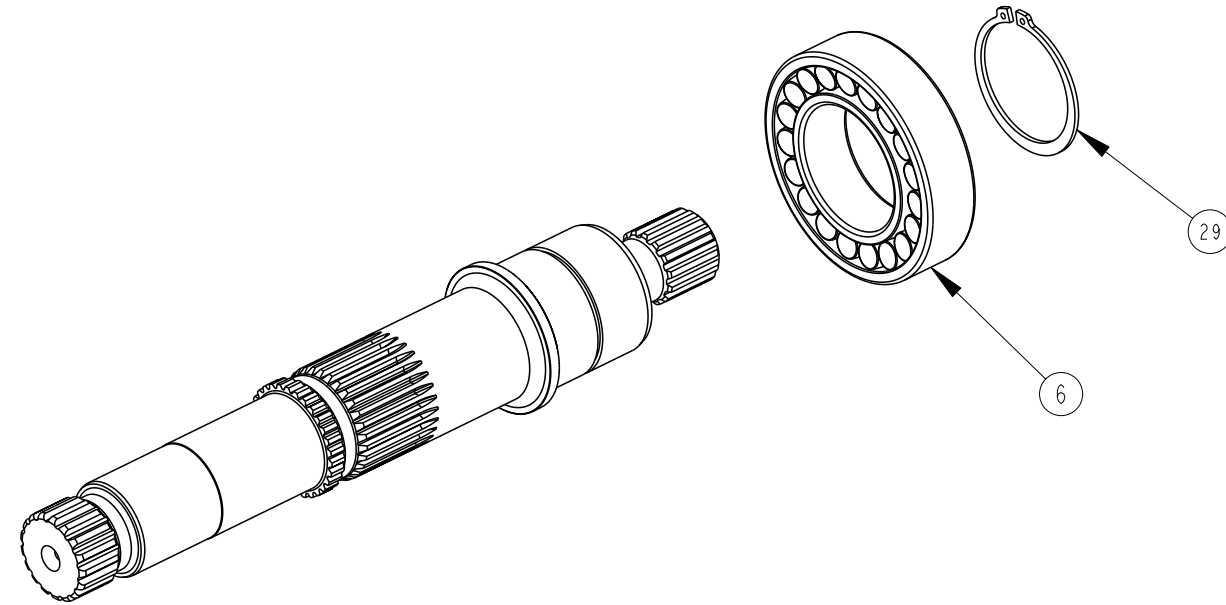


BARREL KIT AND ROTATION GROUP KIT



TITLE	DRAWING NUMBER	REVISION	STATUS	SHEET
SERVICE PARTS P2145 DESIGN SERIES 13	P2-145-0407	A	PR	5 OF 7

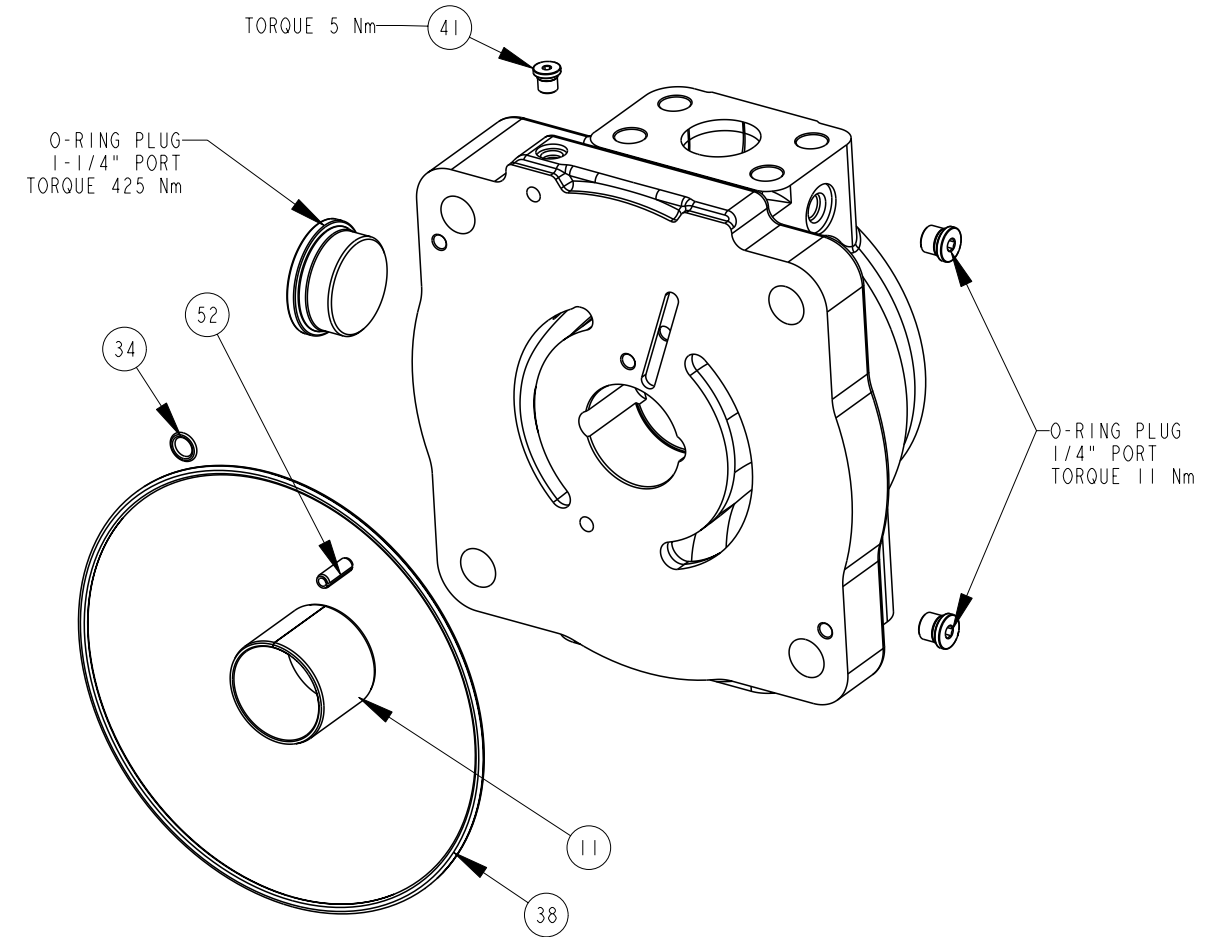
SHAFT ASSEMBLY KITS ITEM 57



SHAFT ONLY	SHAFT ASSEMBLY	DESCRIPTION
P2-145-3725	P2-145-0238-36	C SPLINE THRU
P2-145-3719	P2-145-0238-40	D SPLINE THRU
P2-145-3733	P2-145-0238-46	C KEY THRU
P2-145-3735	P2-145-0238-48	CC KEY THRU
P2-145-3737	P2-145-0238-50	D KEY THRU
P2-145-3720	P2-145-0238-56	C SPLINE THRU NO UNDERCUT
P2-145-3746	P2-145-0238-60	D SPLINE THRU NO UNDERCUT

DRAWN BY	DATE	CHANGED BY	DATE	ECN NUMBER
HOEY	22NOV04	J. LAMBERS	20FEB06	134572

COVER ASSEMBLY KITS ITEM 55



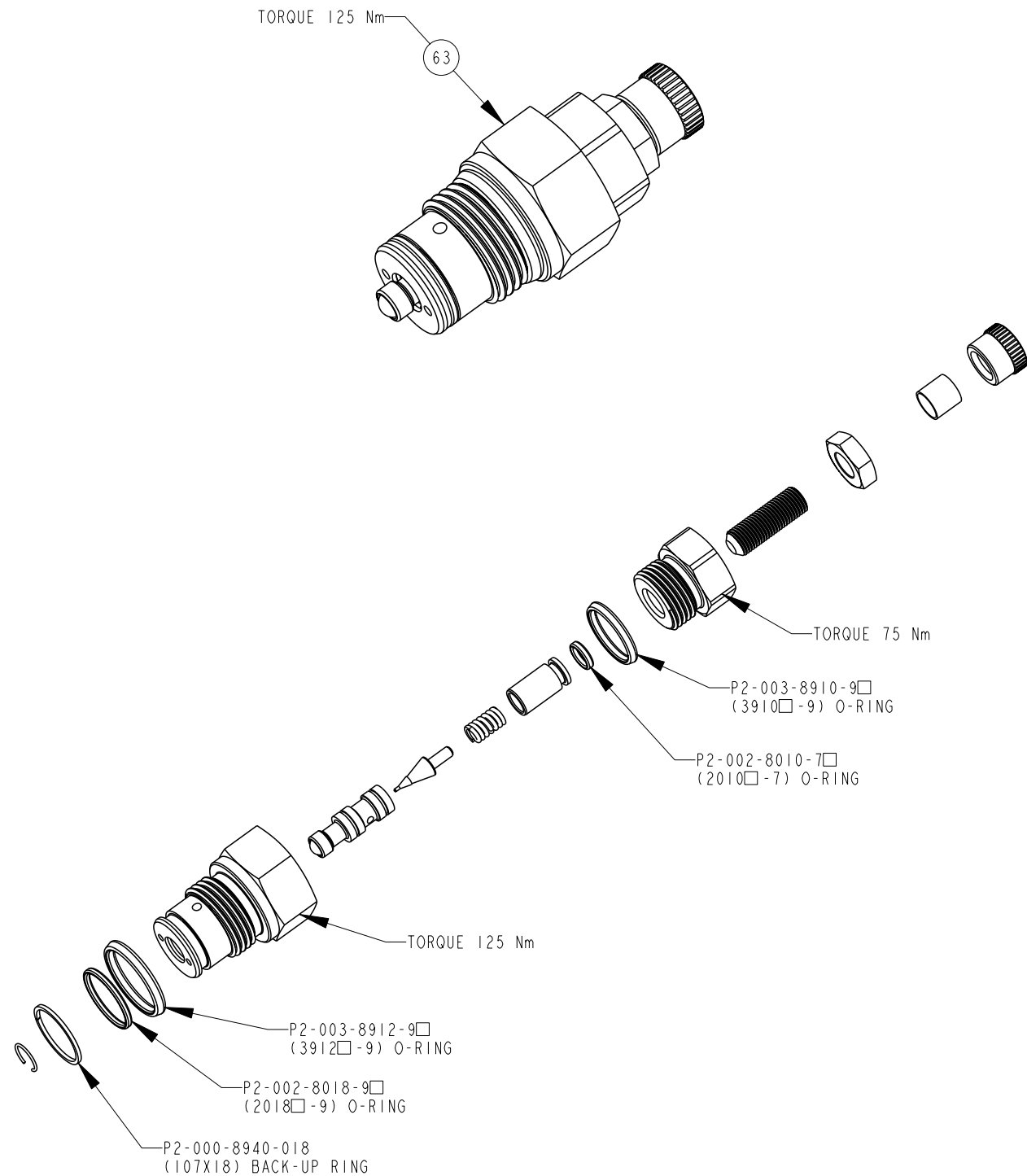
COVER ONLY	COVER ASSEMBLY	DESCRIPTION
P2-145-1013-01	P2-145-0226-01□	SIDE PORTS, CCW, UNC
P2-145-1013-02	P2-145-0226-02□	SIDE PORTS, CCW, UNC, THRU
P2-145-1013-03	P2-145-0226-03□	SIDE PORTS, CCW, METRIC
P2-145-1013-04	P2-145-0226-04□	SIDE PORTS, CCW, METRIC, THRU
P2-145-1014-01	P2-145-0226-05□	SIDE PORTS, CW, UNC
P2-145-1014-02	P2-145-0226-06□	SIDE PORTS, CW, UNC, THRU
P2-145-1014-03	P2-145-0226-07□	SIDE PORTS, CW, METRIC
P2-145-1014-04	P2-145-0226-08□	SIDE PORTS, CW, METRIC, THRU

TITLE	DRAWING NUMBER	REVISION	STATUS	SHEET
SERVICE PARTS P2145 DESIGN SERIES 13	P2-145-0407	A	PR	6 OF 7

DRAWN BY	DATE	CHANGED BY	DATE	ECN NUMBER
HOEY	22NOV04	J. LAMBERS	20FEB06	134572

TORQUE CONTROL CARTRIDGE

P2-000-0803 □ - ITEM 63



ASSEMBLY, DIS-ASSEMBLY AND REPAIR NOTES

DISASSEMBLY STEPS FOR ENTIRE PUMP

1. REMOVE COVER SCREWS AND COVER
2. DE-STROKE PUMP TO MINIMUM ANGLE WITH MAX VOLUME SCREW
3. REMOVE FIXED CLEARANCE HOLD DOWN SCREWS AND HOLD DOWN PARTS
4. REMOVE ROTATING GROUP (BARREL, SLIPPER RETAINER AND PISTONS)
5. REMOVE SHAFT SEAL CARRIER
6. REMOVE SHAFT
7. REMOVE BIAS SPRING PLUG, SPRING AND RETAINER
8. REMOVE MAX. VOLUME ASSY
9. REMOVE SERVO PISTON
10. REMOVE SWASHPLATE ASSEMBLY

SHAFT SEAL REPLACEMENT

1. REMOVE SEAL CARRIER ONLY
2. REMOVE OLD SEAL
3. INSPECT SHAFT
4. IF SHAFT IS WORN INSTALL NEW SEAL IN INNER LOCATION FOR SINGLE SEAL APPLICATIONS (SEE SHEET 1). REPLACE SHAFT FOR DUAL SEAL APPLICATIONS

TITLE	SERVICE PARTS P2145 DESIGN SERIES 13	DRAWING NUMBER	P2-145-0407	REVISION	A	STATUS	PR	SHEET 7 OF 7
-------	---	----------------	-------------	----------	---	--------	----	--------------

DRAWN BY	HOEY	DATE	22NOV04	CHANGED BY	J. LAMBERS	DATE	20FEB06	ECN NUMBER	134572
----------	------	------	---------	------------	------------	------	---------	------------	--------

