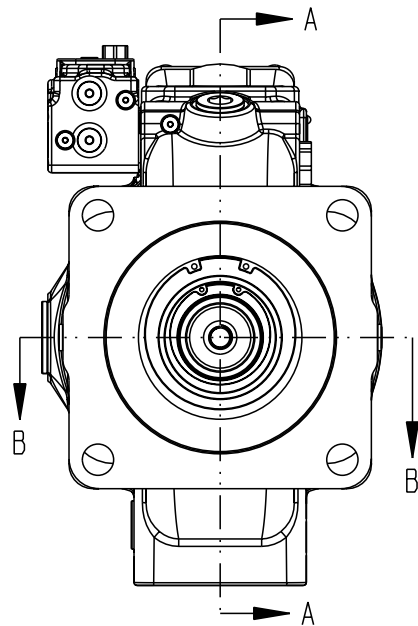
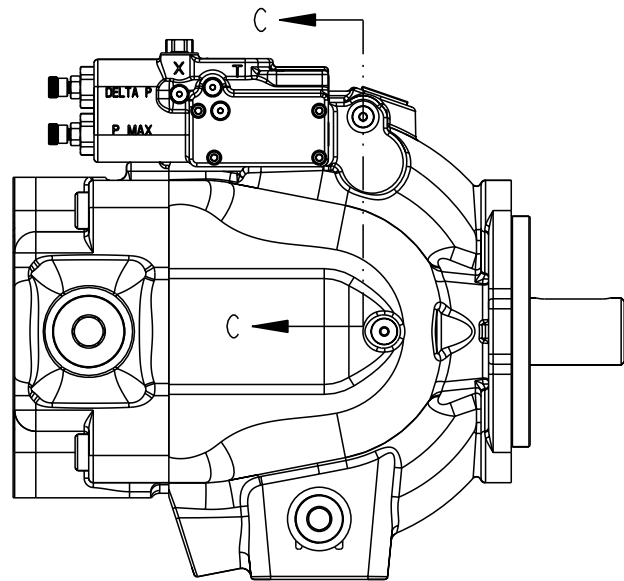
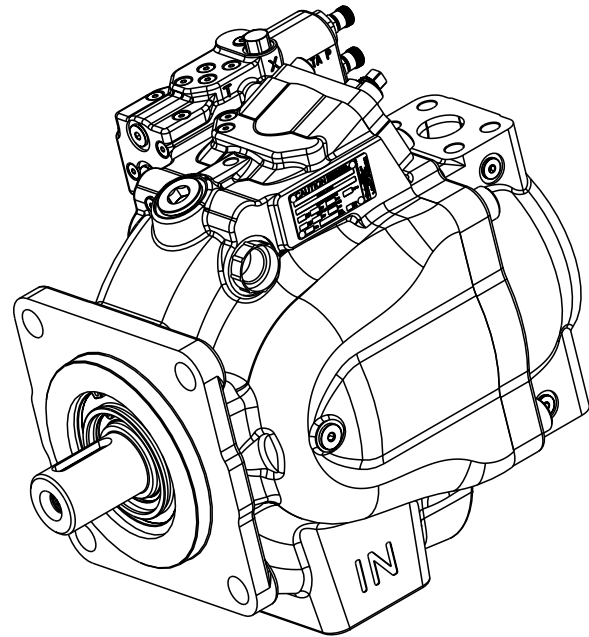
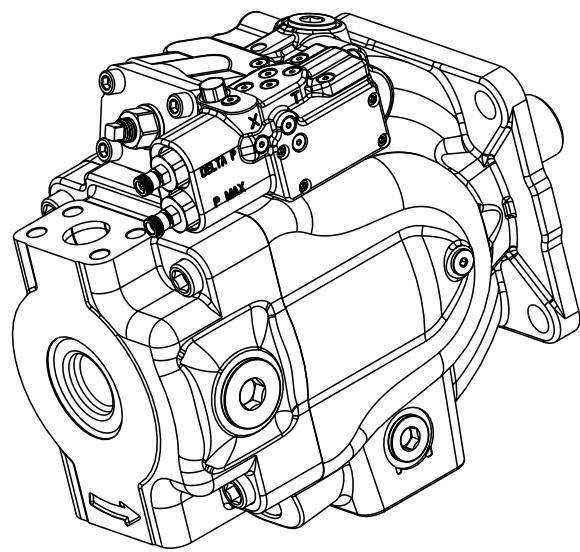
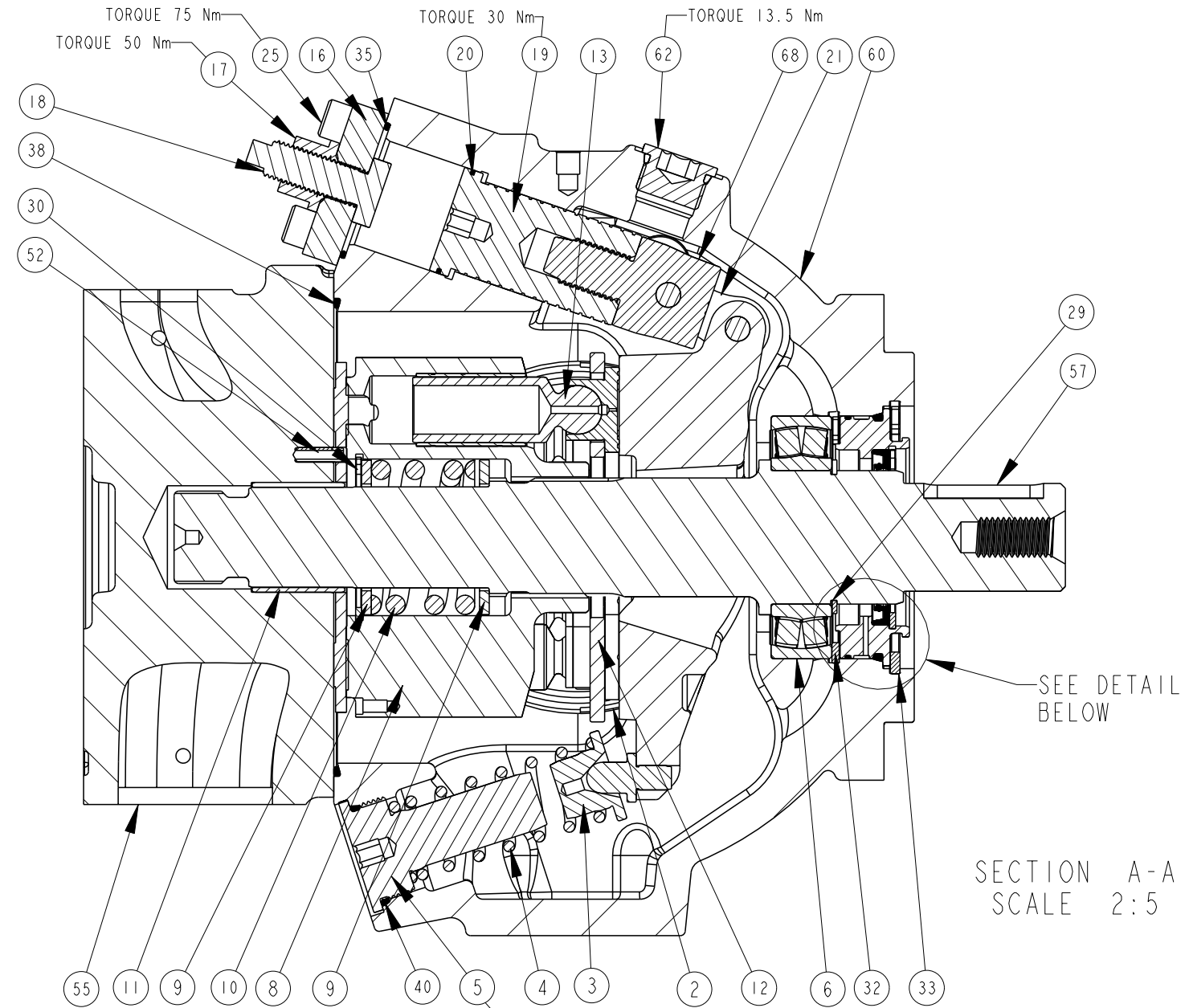


TITLE	SERVICE PARTS P2145 DESIGN SERIES 12	DRAWING NUMBER	P2-145-0405	REVISION	-	STATUS	PR	SHEET 1 OF 7
-------	-----------------------------------------	----------------	-------------	----------	---	--------	----	--------------

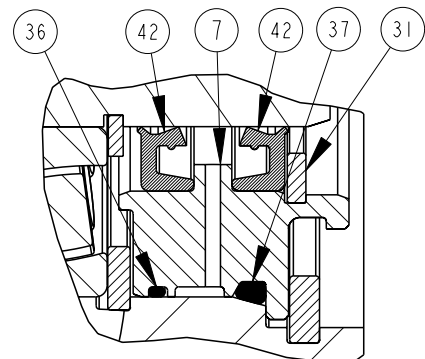
DRAWN BY	STREHLOW	DATE	31OCT02	CHANGED BY	B. LARKIN	DATE	08NOV02	ECN NUMBER	133698
----------	----------	------	---------	------------	-----------	------	---------	------------	--------



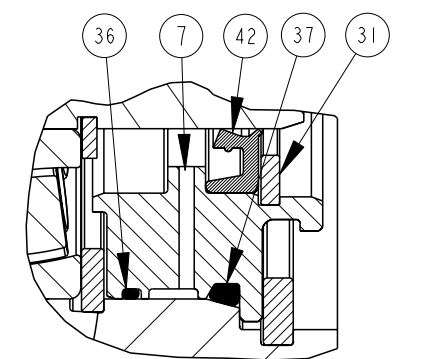
NOTES:  
1 PUMP SHOWN IS A RIGHT HAND (CW) ROTATION PUMP. LEFT HAND (CCW) ROTATION PUMPS HAVE OUTLET GAUGE PORT REVERSED.



SECTION A-A  
SCALE 2:5



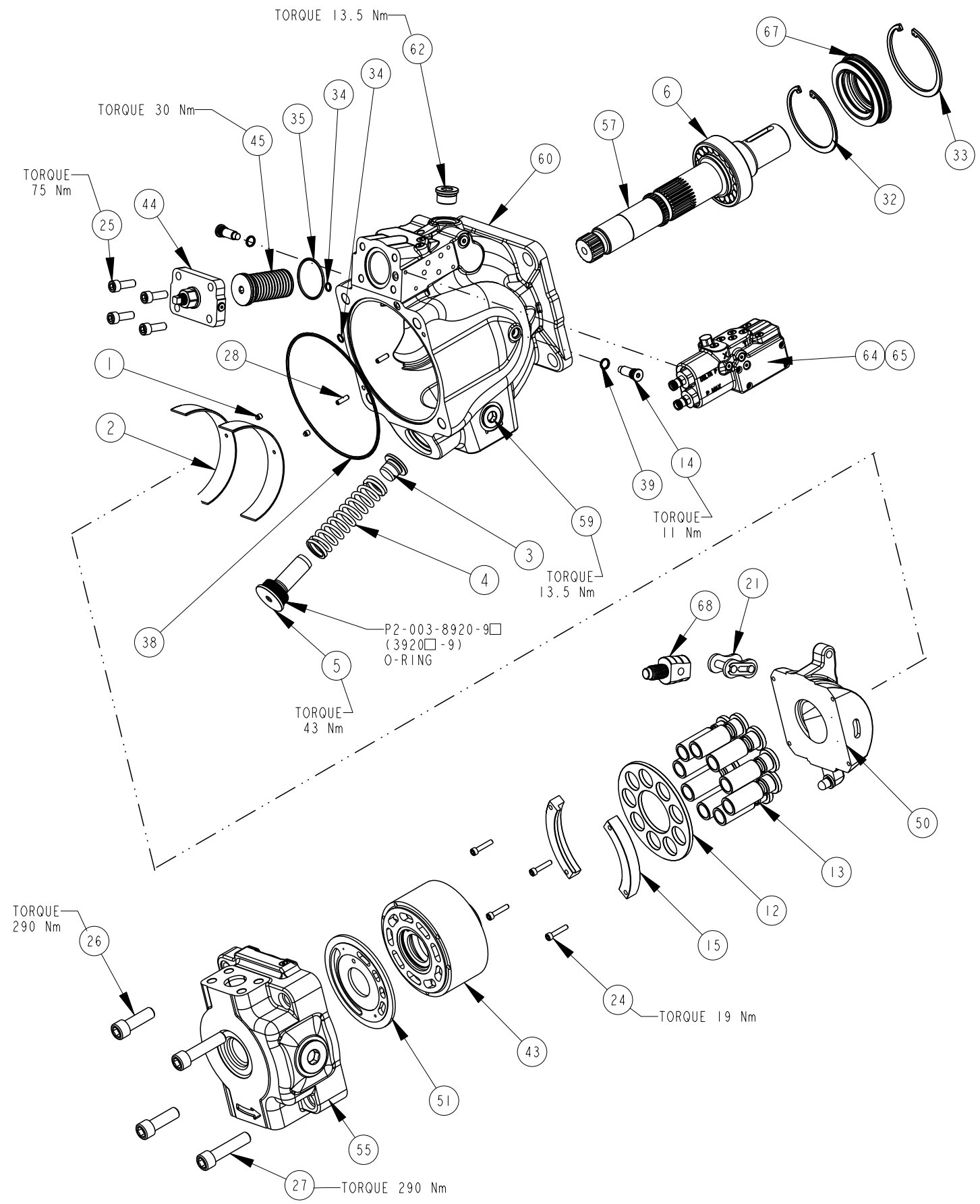
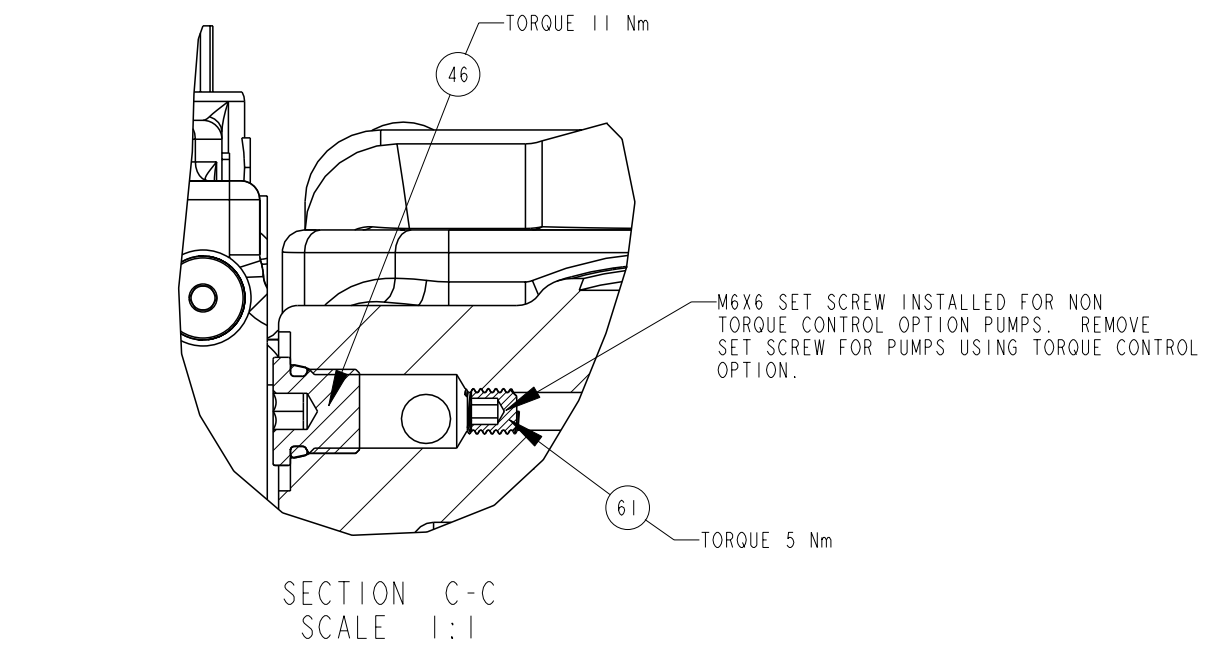
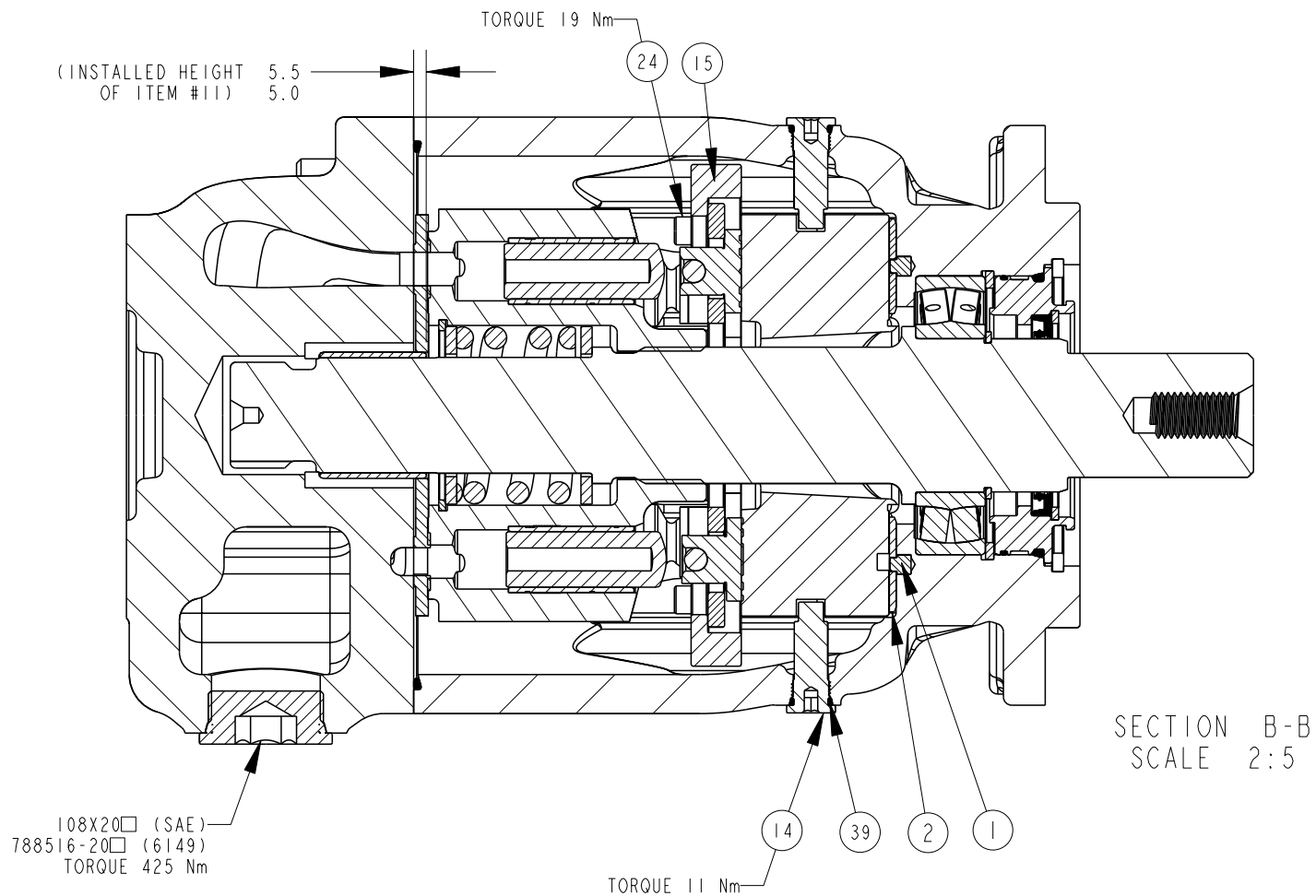
DUAL SHAFT SEAL ASSEMBLY  
P2-145-0210-02□  
SECTION A-A  
SCALE 1:1



SINGLE SHAFT SEAL ASSEMBLY  
P2-145-0210-01□  
SECTION A-A  
SCALE 1:1

TITLE	DRAWING NUMBER	REVISION	STATUS	SHEET 2 OF 7
SERVICE PARTS P2145 DESING SERIES 12	P2-145-0405	-	PR	

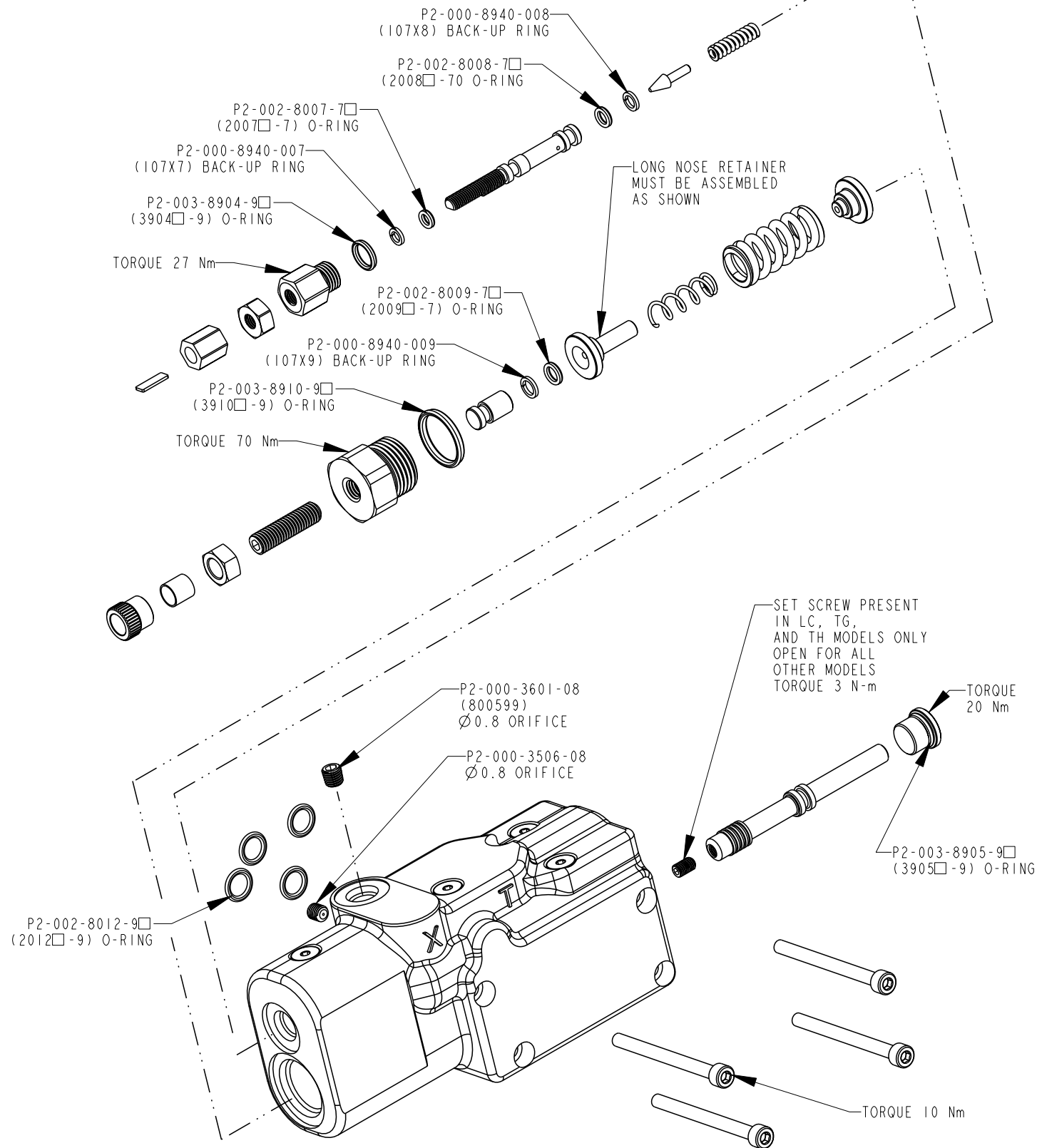
DRAWN BY	DATE	CHANGED BY	DATE	ECN NUMBER
STREHLOW	31OCT02	B. LARKIN	08NOV02	133698



TITLE	DRAWING NUMBER	REVISION	STATUS	SHEET
SERVICE PARTS P2145 DESIGN SERIES 12	P2-145-0405	-	PR	3 OF 7

## COMPENSATOR KITS

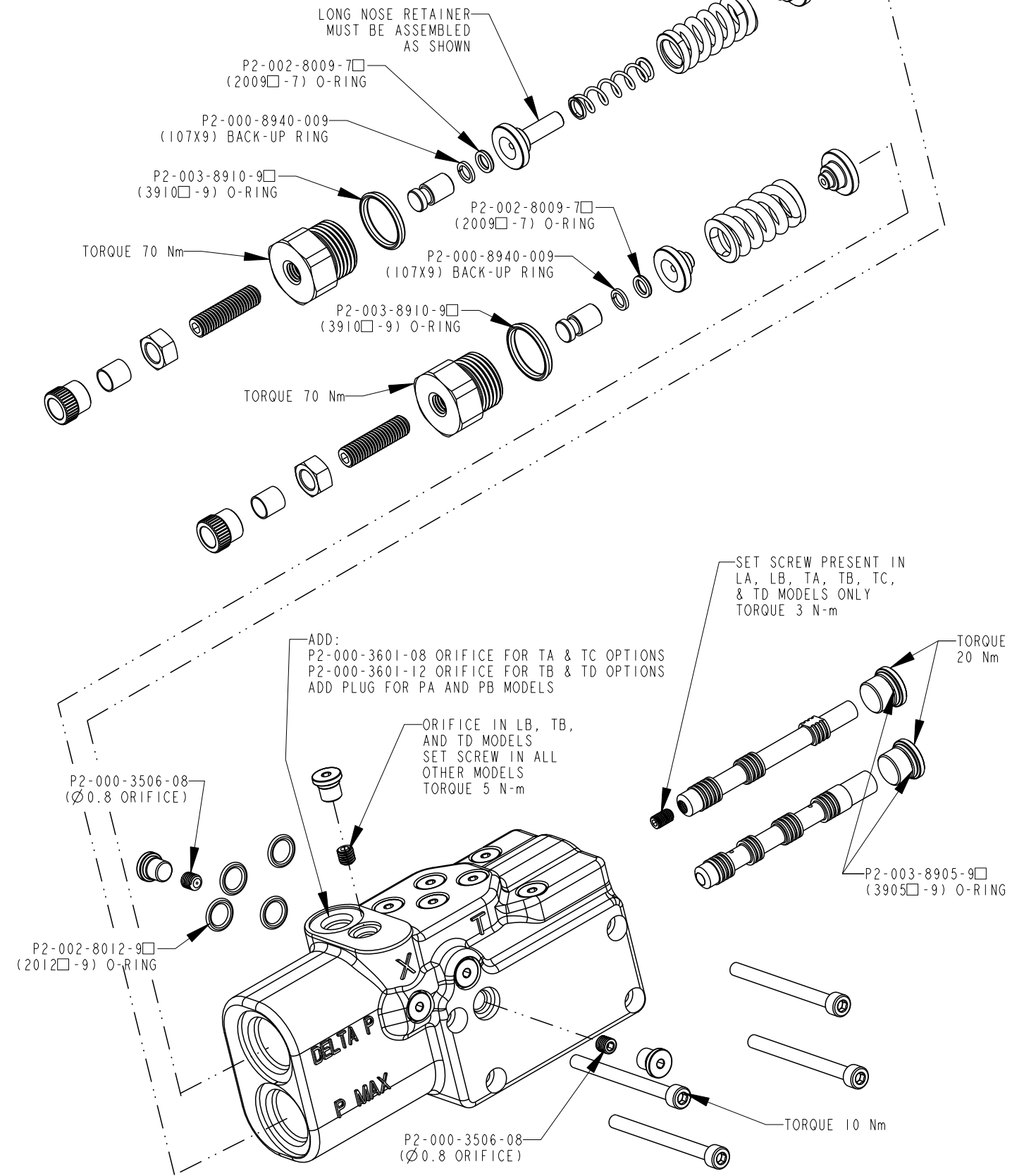
SINGLE SPOOL OPTIONS - ITEM 64



DRAWN BY	DATE	CHANGED BY	DATE	ECN NUMBER
STREHLOW	31OCT02	B. LARKIN	08NOV02	133698

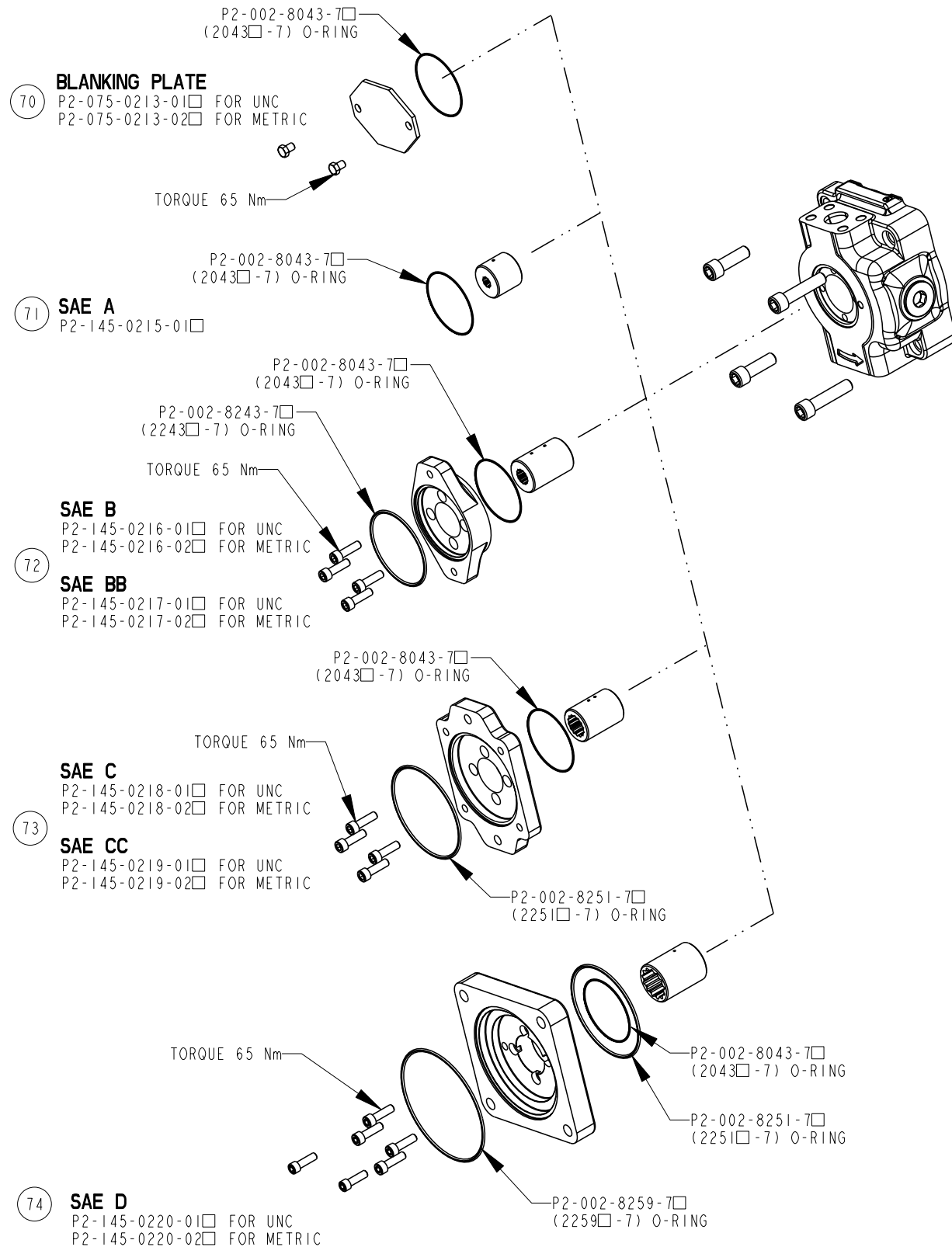
## COMPENSATOR KITS

DUAL SPOOL OPTIONS - ITEM 65

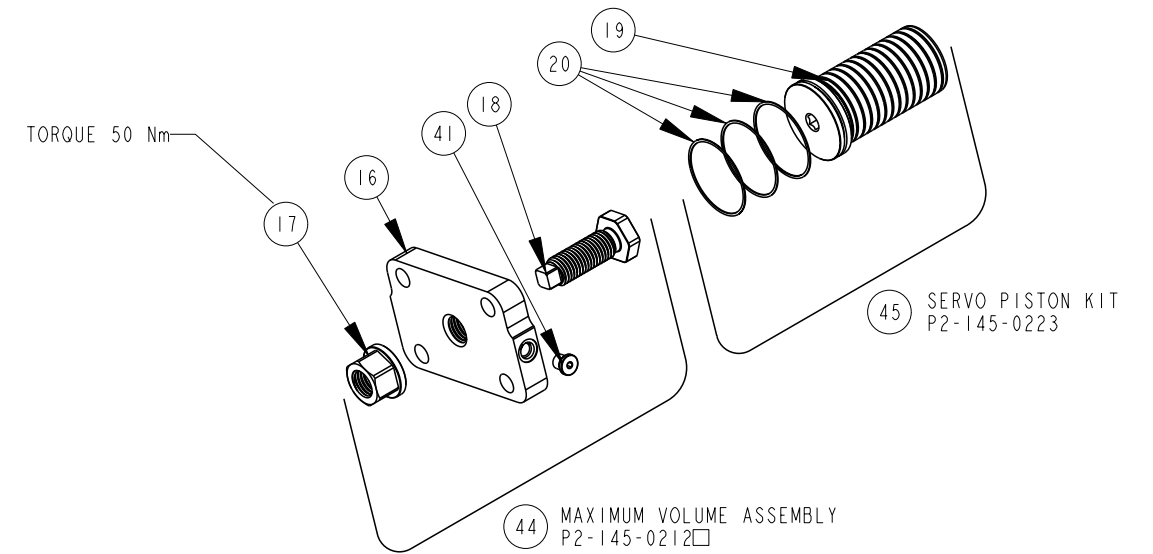




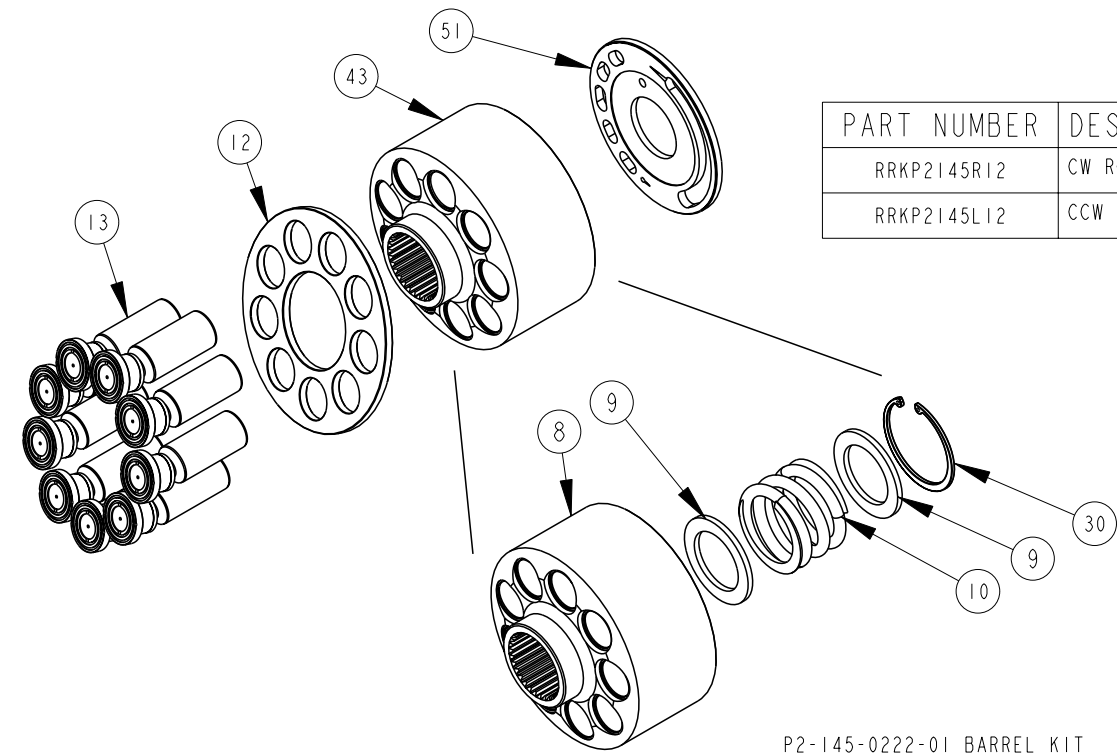
## THRU DRIVE KITS



## MAX VOLUME ASSEMBLY AND SERVO PISTON KIT



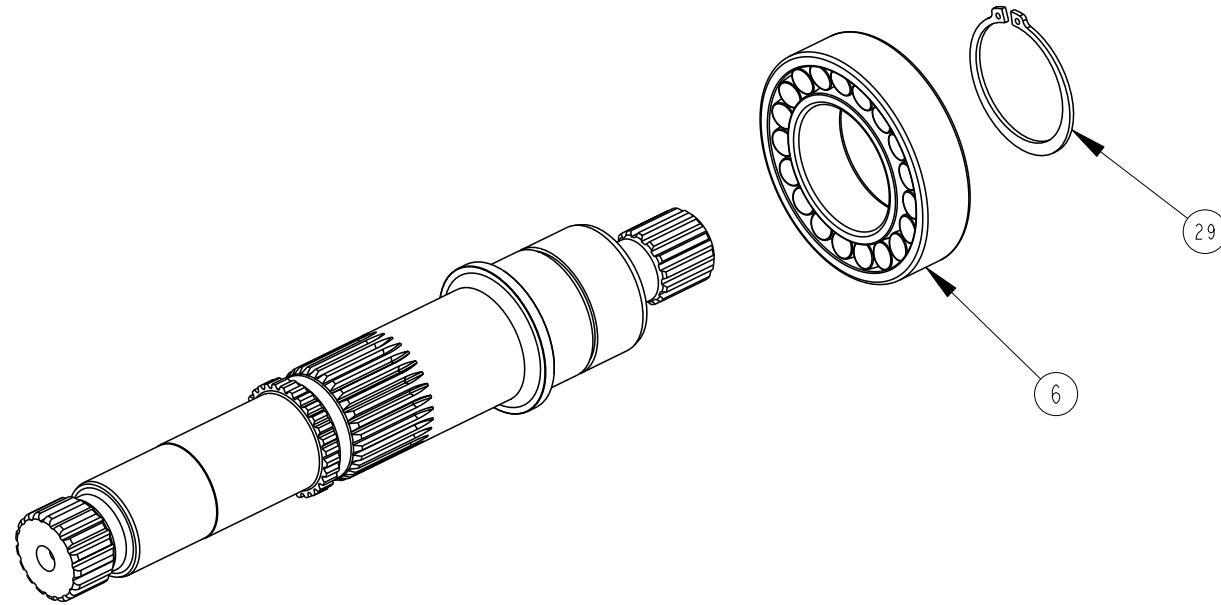
## BARREL KIT AND ROTATION GROUP KIT



PART NUMBER	DESCRIPTION
RRKP2145R12	CW ROTATION GROUP
RRKP2145L12	CCW ROTATION GROUP

TITLE	DRAWING NUMBER	REVISION	STATUS	SHEET
SERVICE PARTS P2145 DESIGN SERIES 12	P2-145-0405	-	PR	5 OF 7

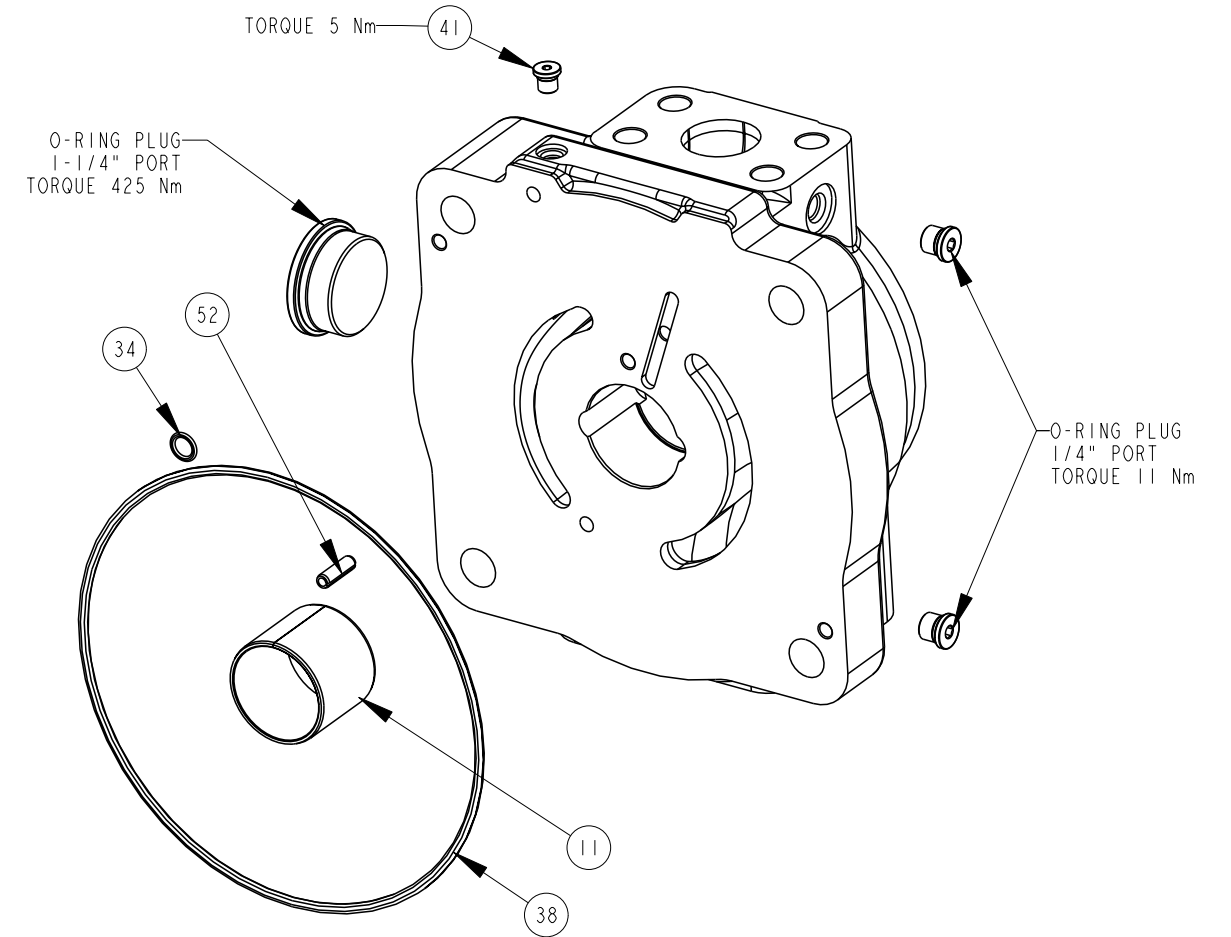
## SHAFT ASSEMBLY KITS ITEM 57



SHAFT ONLY	SHAFT ASSEMBLY	DESCRIPTION
P2-145-3725	P2-145-0238-36	C SPLINE THRU
P2-145-3719	P2-145-0238-40	D SPLINE THRU
P2-145-3733	P2-145-0238-46	C KEY THRU
P2-145-3735	P2-145-0238-48	CC KEY THRU
P2-145-3737	P2-145-0238-50	D KEY THRU
P2-145-3720	P2-145-0238-56	C SPLINE THRU NO UNDERCUT
P2-145-3746	P2-145-0238-60	D SPLINE THRU NO UNDERCUT

DRAWN BY	DATE	CHANGED BY	DATE	ECN NUMBER
STREHLOW	31OCT02	B. LARKIN	08NOV02	133698

## COVER ASSEMBLY KITS ITEM 55



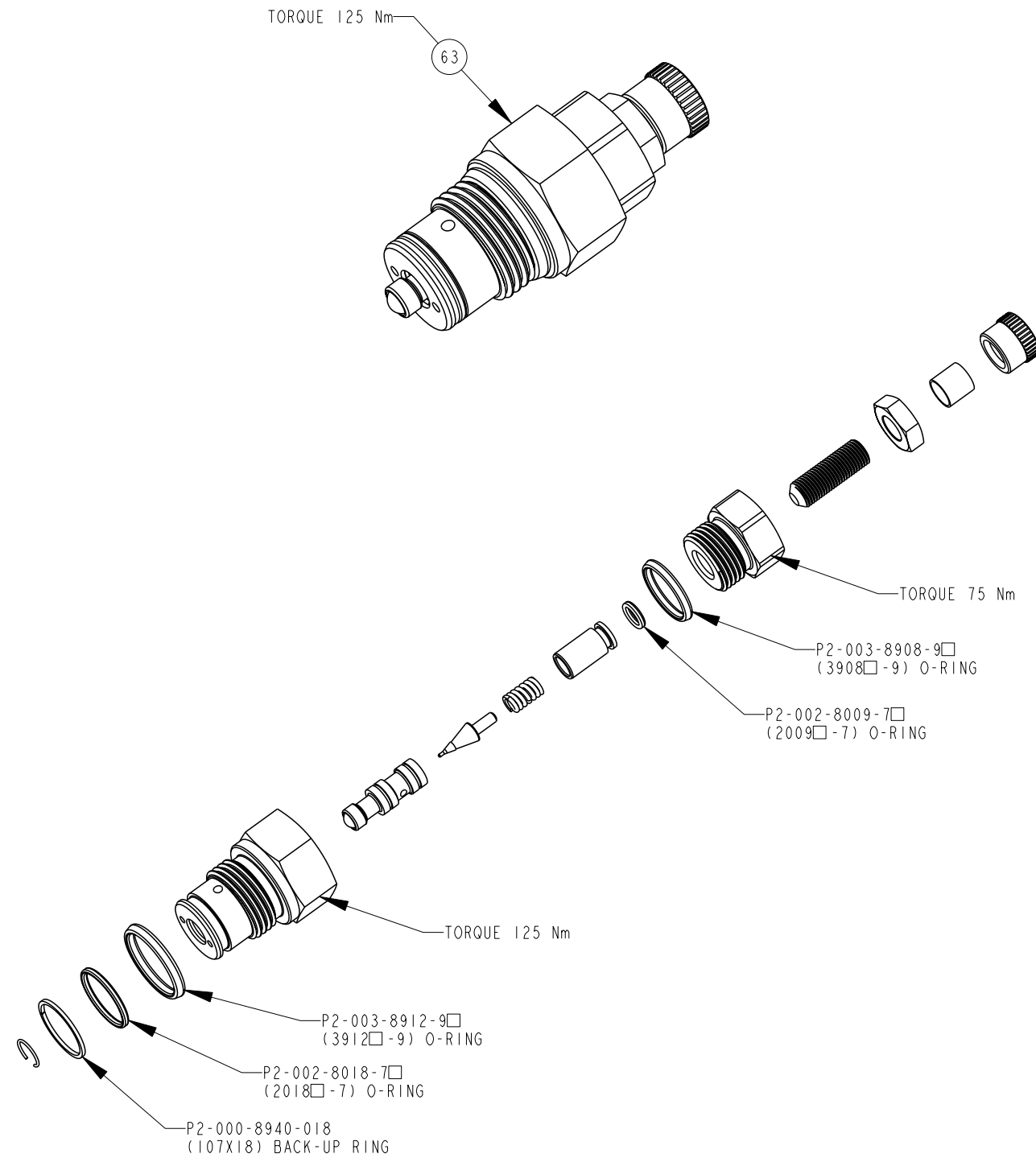
COVER ONLY	COVER ASSEMBLY	DESCRIPTION
P2-145-1013-01	P2-145-0226-01□	SIDE PORTS, CCW, UNC
P2-145-1013-02	P2-145-0226-02□	SIDE PORTS, CCW, UNC, THRU
P2-145-1013-03	P2-145-0226-03□	SIDE PORTS, CCW, METRIC
P2-145-1013-04	P2-145-0226-04□	SIDE PORTS, CCW, METRIC, THRU
P2-145-1014-01	P2-145-0226-05□	SIDE PORTS, CW, UNC
P2-145-1014-02	P2-145-0226-06□	SIDE PORTS, CW, UNC, THRU
P2-145-1014-03	P2-145-0226-07□	SIDE PORTS, CW, METRIC
P2-145-1014-04	P2-145-0226-08□	SIDE PORTS, CW, METRIC, THRU

TITLE	DRAWING NUMBER	REVISION	STATUS	SHEET
SERVICE PARTS P2145 DESIGN SERIES 12	P2-145-0405	-	PR	6 OF 7

DRAWN BY	DATE	CHANGED BY	DATE	ECN NUMBER
STREHLOW	31OCT02	B. LARKIN	08NOV02	133698

# TORQUE CONTROL CARTRIDGE

P2-000-0803 □ - ITEM 63



## ASSEMBLY, DIS-ASSEMBLY AND REPAIR NOTES

### DISASSEMBLY STEPS FOR ENTIRE PUMP

1. REMOVE COVER SCREWS AND COVER
2. DE-STROKE PUMP TO MINIMUM ANGLE WITH MAX VOLUME SCREW
3. REMOVE FIXED CLEARANCE HOLD DOWN SCREWS AND HOLD DOWN PARTS
4. REMOVE ROTATING GROUP (BARREL, SLIPPER RETAINER AND PISTONS)
5. REMOVE SHAFT SEAL CARRIER
6. REMOVE SHAFT
7. REMOVE BIAS SPRING PLUG, SPRING AND RETAINER
8. REMOVE MAX. VOLUME ASSY
9. REMOVE SERVO PISTON ASSY.
10. REMOVE SWASHPLATE ASSEMBLY

### SHAFT SEAL REPLACEMENT

1. REMOVE SEAL CARRIER ONLY
2. REMOVE OLD SEAL
3. INSPECT SHAFT
4. IF SHAFT IS WORN INSTALL NEW SEAL IN INNER LOCATION FOR SINGLE SEAL APPLICATIONS (SEE SHEET 1). REPLACE SHAFT FOR DUAL SEAL APPLICATIONS

