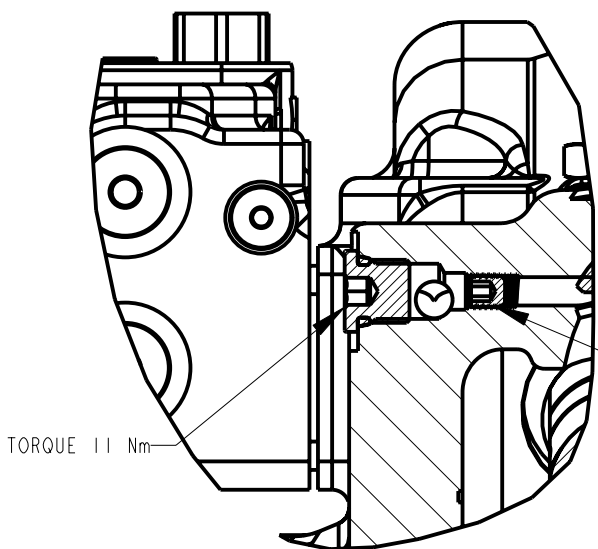
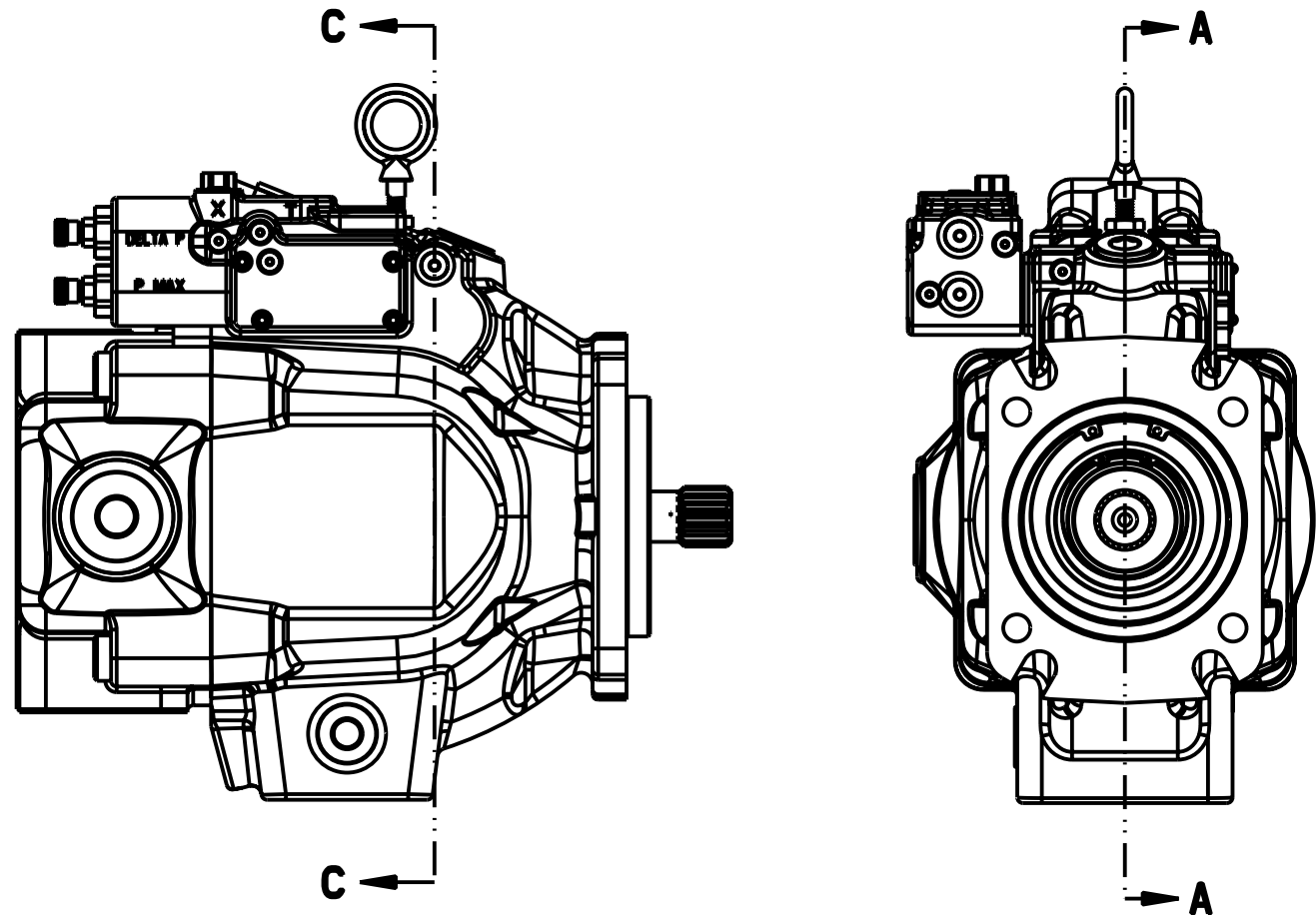


TITLE	SERVICE PARTS P2105 DESIGN SERIES 15	DRAWING NUMBER	P2-105-0411	REVISION	NONE	STATUS	PR	SHEET 1 OF 8
-------	---	----------------	-------------	----------	------	--------	----	--------------

DRAWN BY	L. NAGEL	DATE	10JUL09	CHANGED BY	-	DATE	-	ECN NUMBER	710409
----------	----------	------	---------	------------	---	------	---	------------	--------



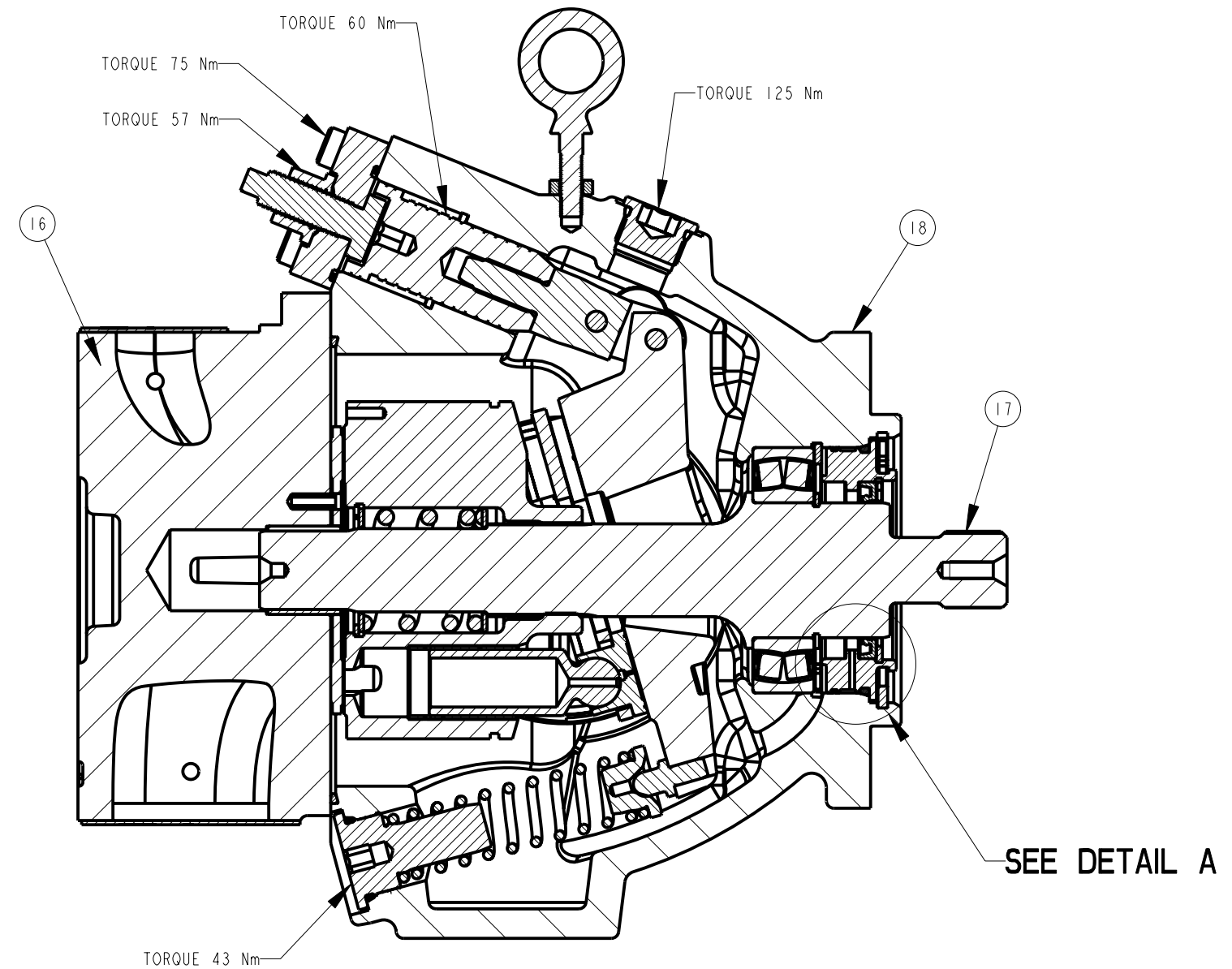
M6X6 SET SCREW INSTALLED FOR NON TORQUE CONTROL OPTION PUMPS. REMOVE SET SCREW FOR PUMPS USING TORQUE CONTROL OPTION

TORQUE TO 5 Nm

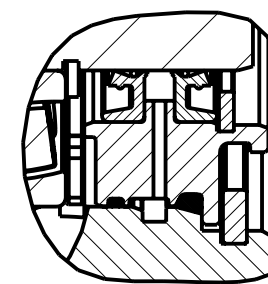
TORQUE 11 Nm

SECTION C-C

NOTES:
1 PUMP SHOWN IS A RIGHT HAND (CW) ROTATION PUMP. LEFT HAND (CCW) ROTATION PUMPS HAVE OUTLET GAUGE PORT REVERSED.

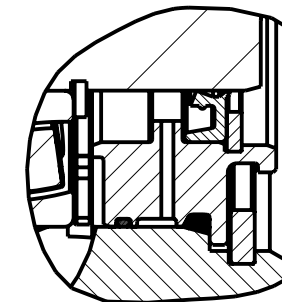


SECTION A-A



DETAIL A

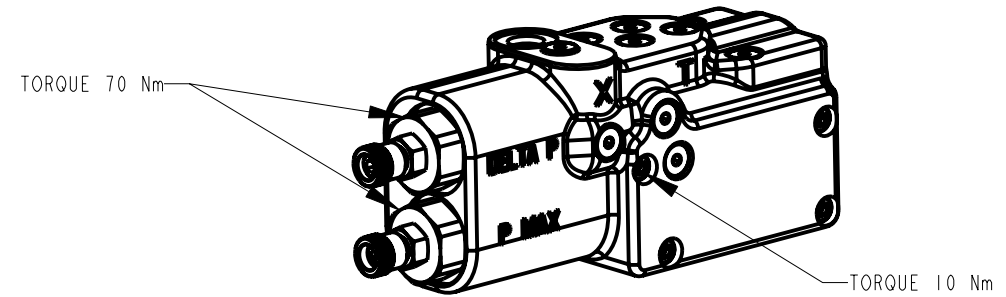
DUAL SHAFT SEAL ASSEMBLY
P2-105-0210-02



DETAIL A

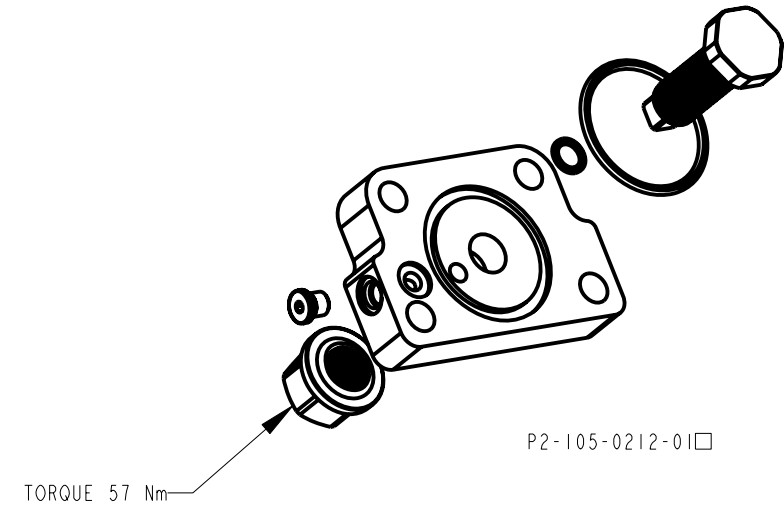
SINGLE SHAFT SEAL ASSEMBLY
P2-105-0210-01

COMPENSATOR KITS ITEM 20

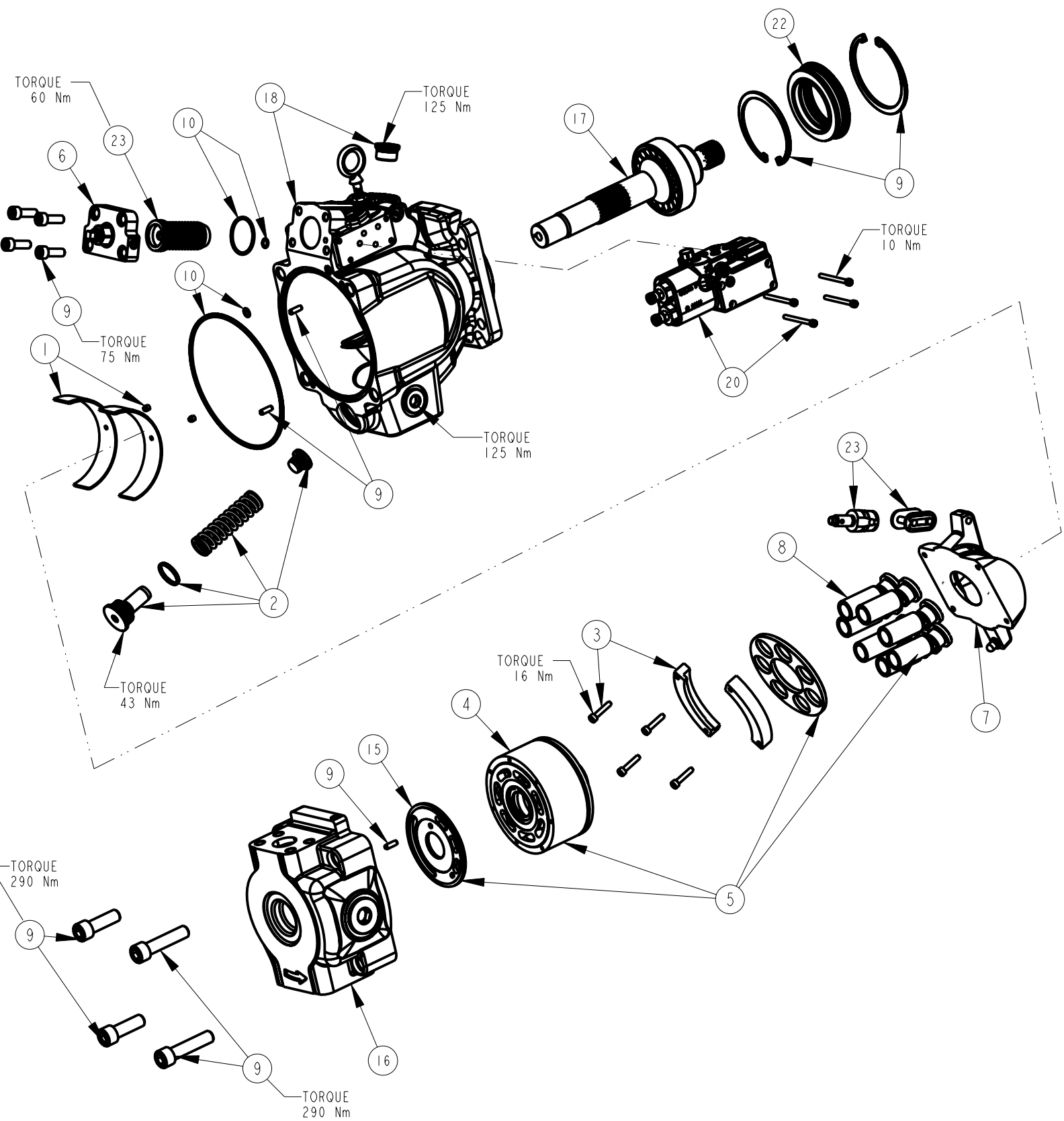


PA	A	20	P2-075-0806-07□	I	COMPENSATOR ASSY
	B	20	P2-075-0806-08□	I	COMPENSATOR ASSY
RA	A	20	P2-075-0806-05□	I	COMPENSATOR ASSY
	B	20	P2-075-0806-06□	I	COMPENSATOR ASSY
LA	A	20	P2-075-0806-01□	I	COMPENSATOR ASSY
	B	20	P2-075-0806-02□	I	COMPENSATOR ASSY
LB	A	20	P2-075-0806-03□	I	COMPENSATOR ASSY
	B	20	P2-075-0806-04□	I	COMPENSATOR ASSY
TA	A	20	P2-075-0806-11□	I	COMPENSATOR ASSY
	B	20	P2-075-0806-12□	I	COMPENSATOR ASSY
TB	A	20	P2-075-0806-13□	I	COMPENSATOR ASSY
	B	20	P2-075-0806-14□	I	COMPENSATOR ASSY

MAX. VOLUME ASSEMBLY ITEM 6

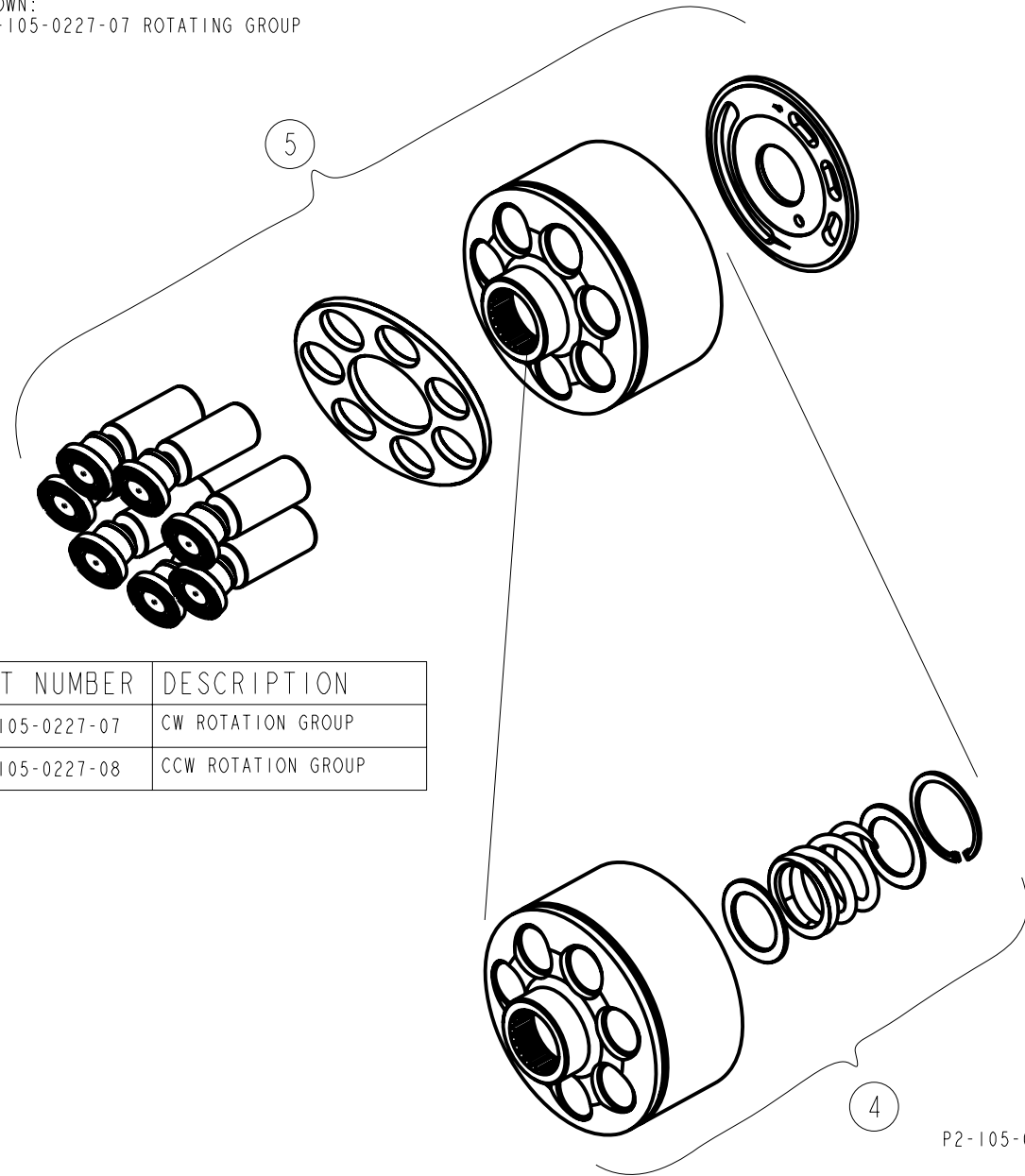


P2-105-0212-01□



ROTATING GROUP / BARREL KIT
ITEM 5
ITEM 4

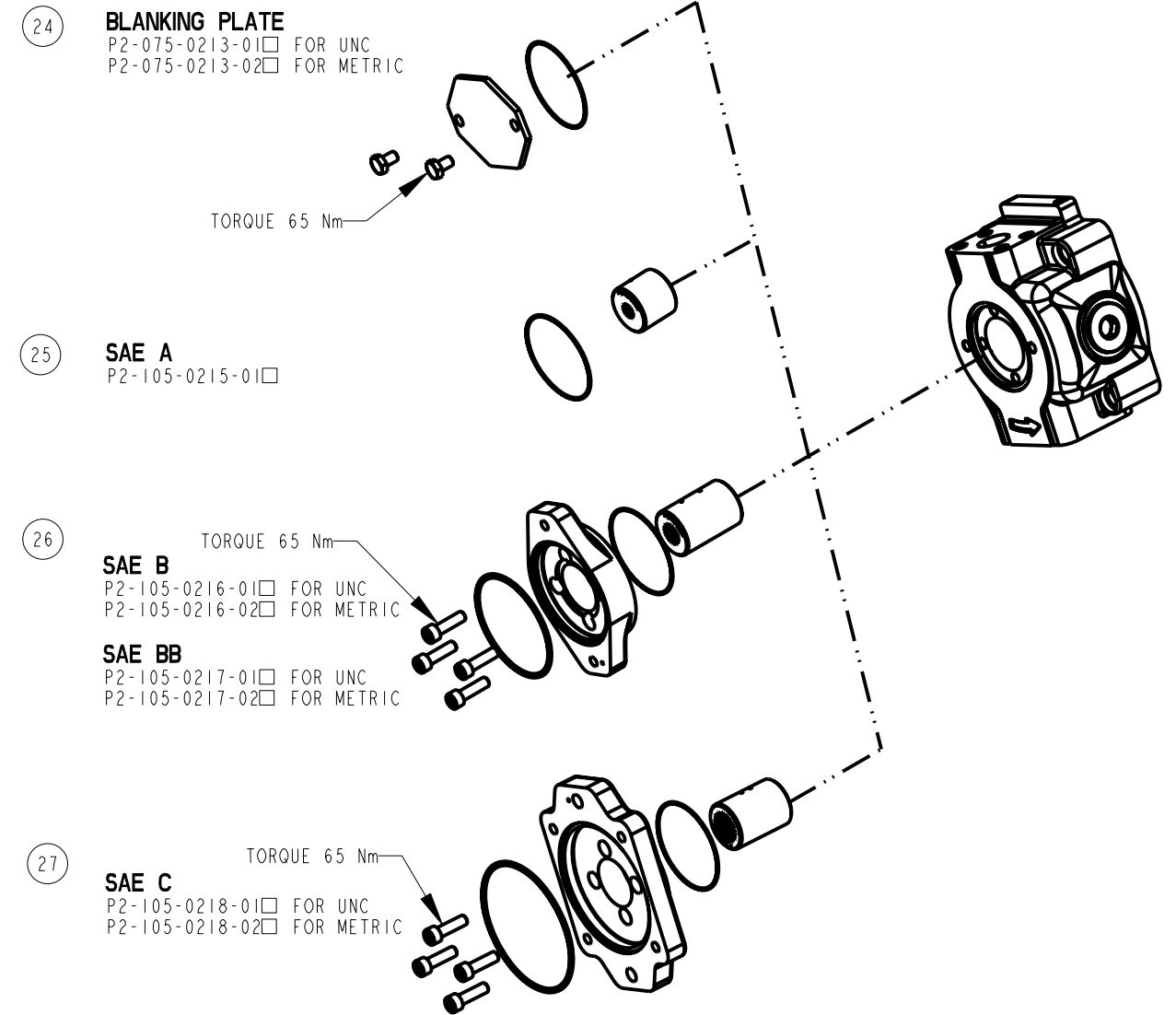
SHOWN:
P2-105-0227-07 ROTATING GROUP



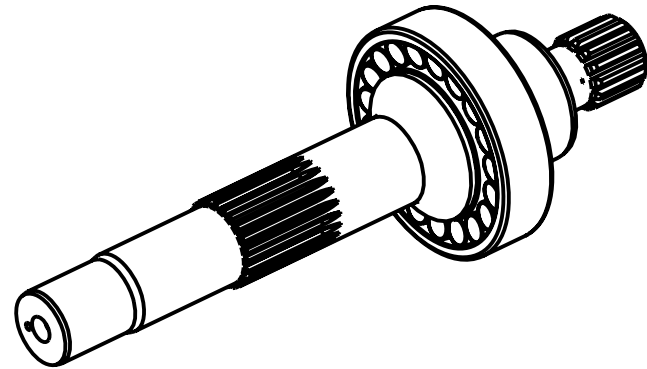
PART NUMBER	DESCRIPTION
P2-105-0227-07	CW ROTATION GROUP
P2-105-0227-08	CCW ROTATION GROUP

P2-105-0222-09 BARREL KIT

THRU DRIVE KITS

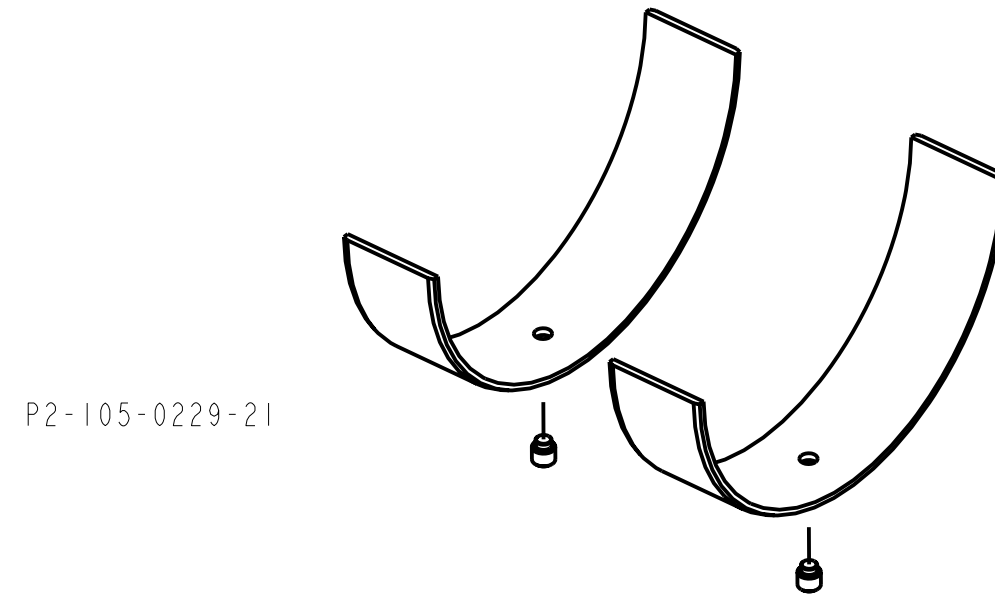


SHAFT ASSEMBLY KITS
ITEM 17

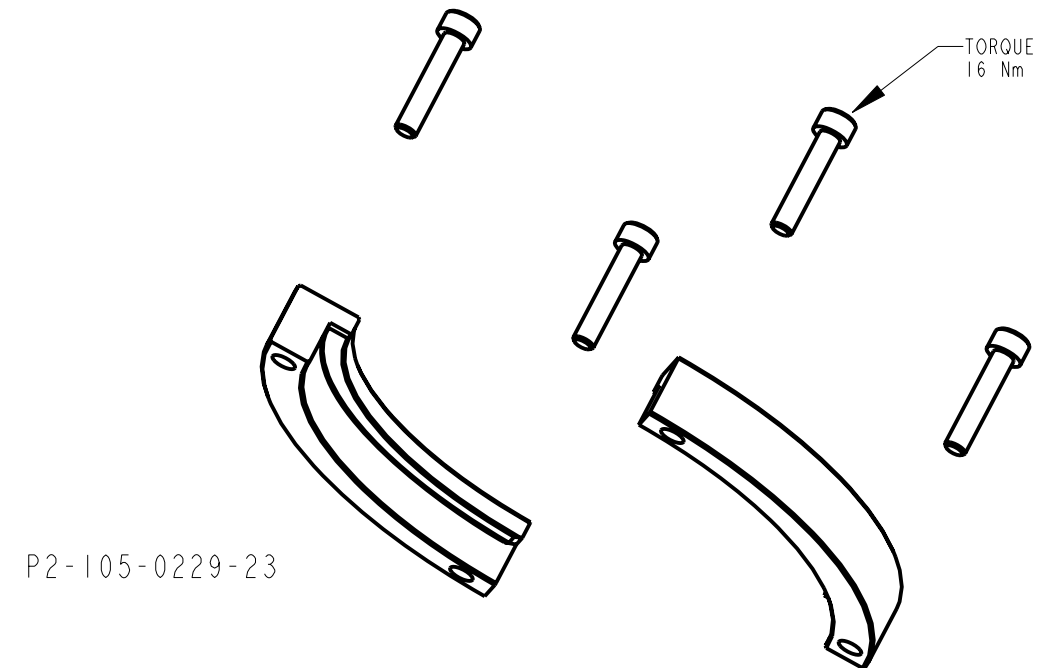


SHAFT ASSEMBLY	DESCRIPTION
P2-105-0225-36	C SPLINE THRU
P2-105-0225-05	C SPLINE NOT THRU
P2-105-0225-40	D SPLINE THRU
P2-105-0225-09	D SPLINE NOT THRU
P2-105-0225-46	C KEY THRU
P2-105-0225-15	C KEY NOT THRU
P2-105-0225-48	CC KEY THRU
P2-105-0225-17	CC KEY NOT THRU
P2-105-0225-38	CC SPLINE THRU
P2-105-0225-07	CC SPLINE NOT THRU
P2-105-0225-56	C SPLINE THRU NO UNDERCUT
P2-105-0225-25	C SPLINE NOT THRU NO UNDERCUT
P2-105-0225-60	D SPLINE THRU NO UNDERCUT

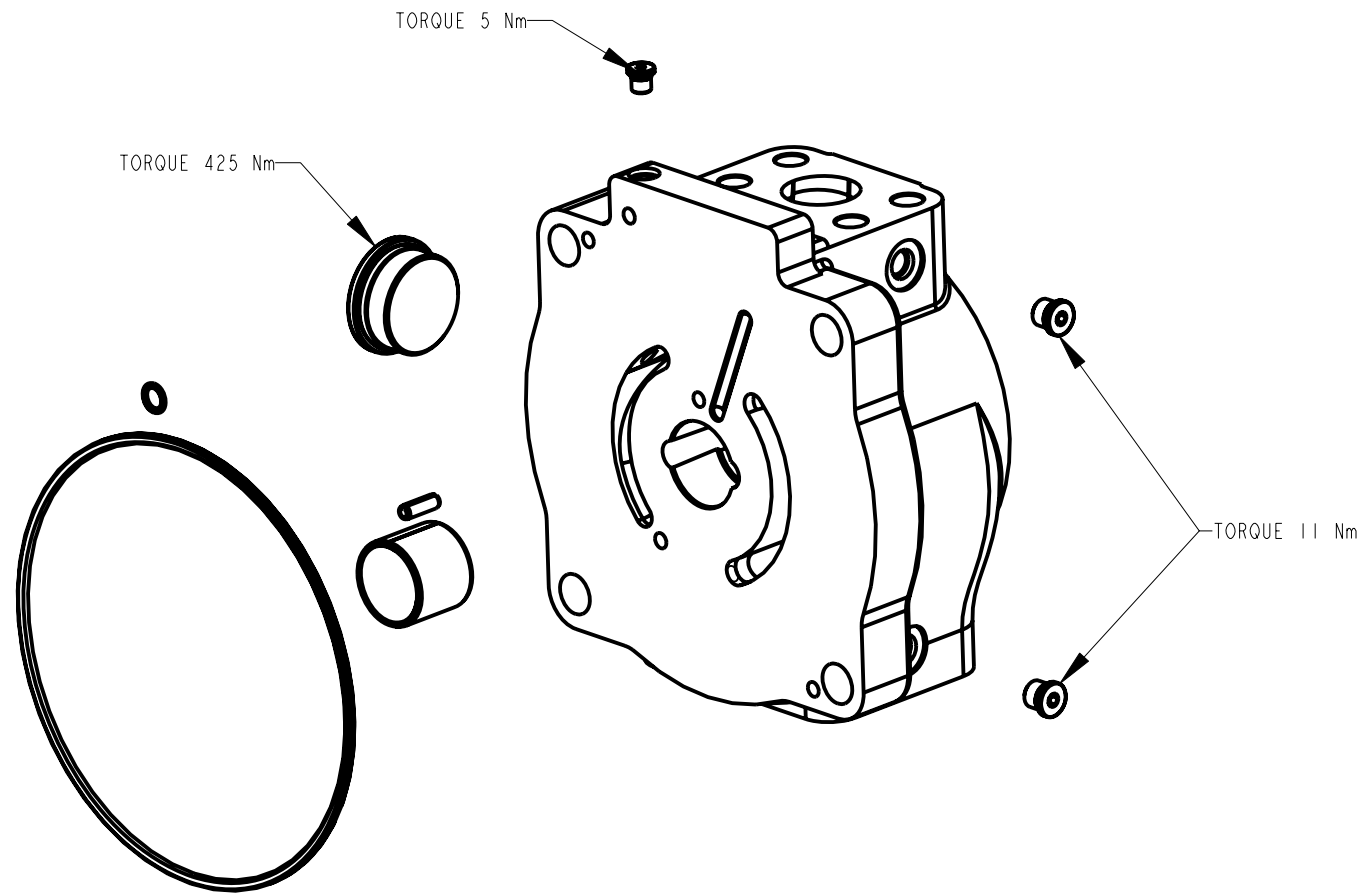
KIT SADDLE BEARING
ITEM 1



KIT FIXED CLEARANCE HOLD DOWN
ITEM 3

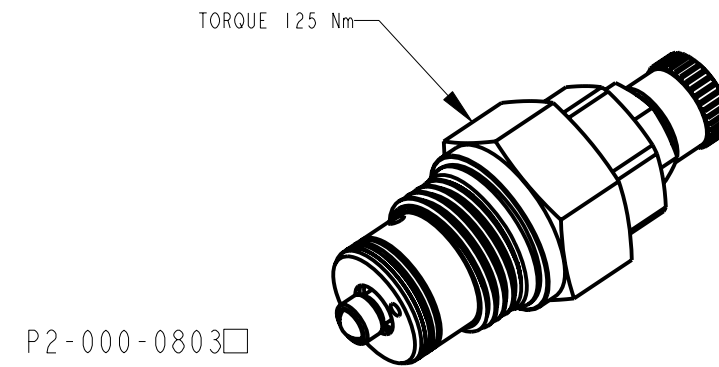


COVER ASSEMBLY KITS
ITEM 16

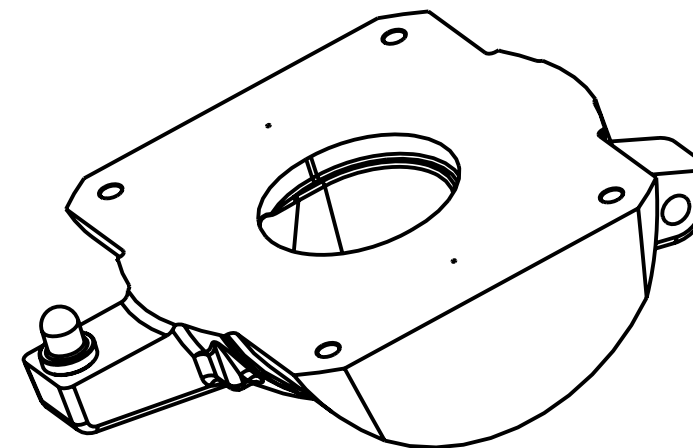


COVER ASSEMBLY	DESCRIPTION
P2-105-0226-01□	SIDE PORTS, CCW, UNC
P2-105-0226-02□	SIDE PORTS, CCW, UNC, THRU
P2-105-0226-03□	SIDE PORTS, CCW, METRIC
P2-105-0226-04□	SIDE PORTS, CCW, METRIC, THRU
P2-105-0226-05□	SIDE PORTS, CW, UNC
P2-105-0226-06□	SIDE PORTS, CW, UNC, THRU
P2-105-0226-07□	SIDE PORTS, CW, METRIC
P2-105-0226-08□	SIDE PORTS, CW, METRIC, THRU

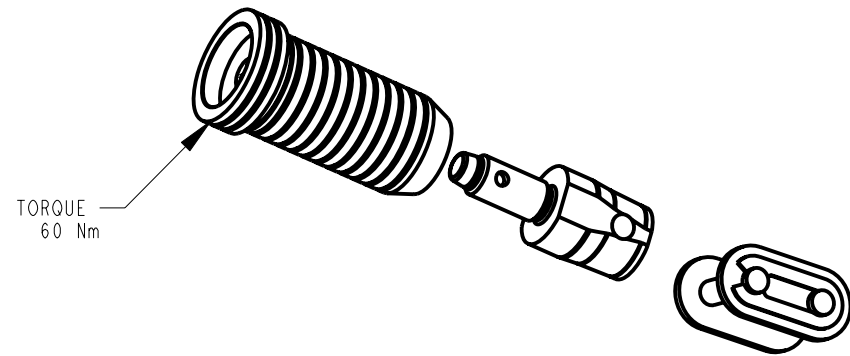
TORQUE CONTROL CARTRIDGE
ITEM 19



KIT SWASH PLATE
ITEM 7

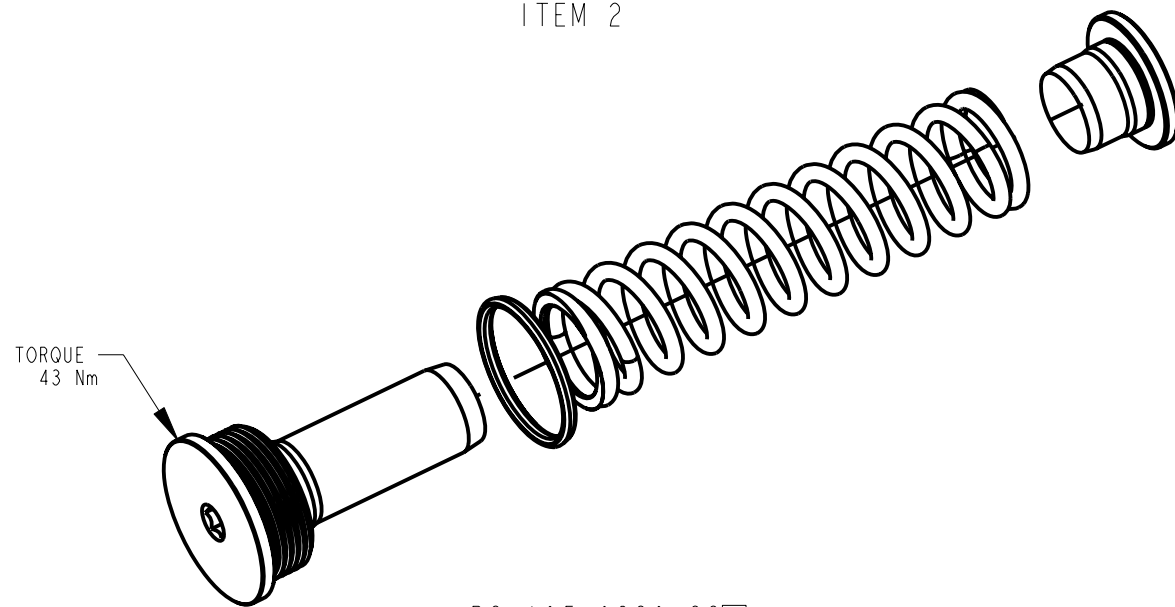


KIT SERVO PISTON ITEM 23



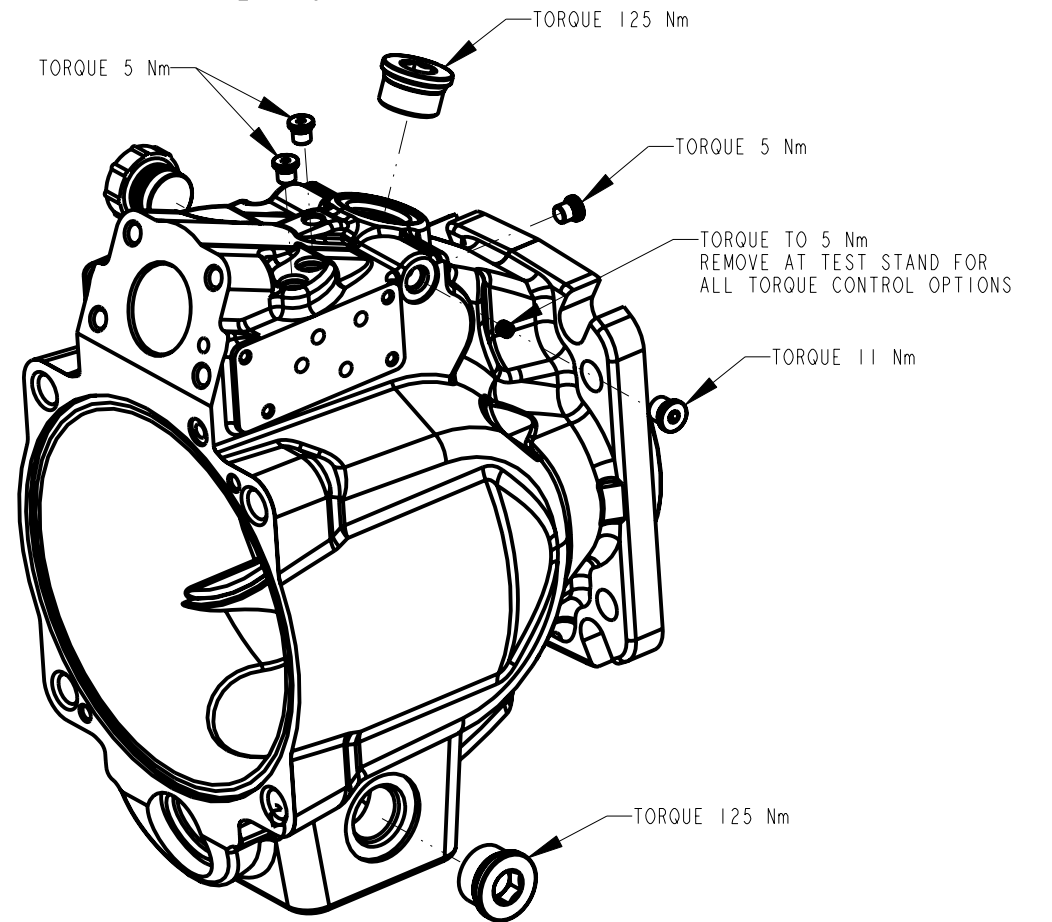
PART NUMBER	DESCRIPTION	
P2-105-0229-19	KIT SERVO PISTON 40%	USED EXEPT WITH TC & TD OPTION
P2-105-0229-20	KIT SERVO PISTON 70%	USED WITH TC & TD OPTION

KIT SERVO SPRING ITEM 2



P2-105-0229-22□

KIT HOUSING ITEM 18



PART NUMBER	DESCRIPTION
P2-105-0221-40□	MACHINING C-PILOT 1 SEAL METRIC HOUSING
P2-105-0221-41□	MACHINING C-PILOT 2 SEAL METRIC HOUSING
P2-105-0221-44□	MACHINING C-PILOT 1 SEAL UNC HOUSING
P2-105-0221-45□	MACHINING C-PILOT 2 SEAL UNC HOUSING

TITLE	SERVICE PARTS P2105 DESIGN SERIES 15	DRAWING NUMBER	P2-105-0411	REVISION	NONE	STATUS	PR	SHEET 7 OF 8
-------	---	----------------	-------------	----------	------	--------	----	--------------

DRAWN BY	L. NAGEL	DATE	10JUL09	CHANGED BY	-	DATE	-	ECN NUMBER	710409
----------	----------	------	---------	------------	---	------	---	------------	--------

ASSEMBLY, DIS-ASSEMBLY AND REPAIR NOTES

DISASSEMBLY STEPS FOR ENTIRE PUMP

1. REMOVE COVER SCREWS AND COVER
2. DE-STROKE PUMP TO MINIMUM ANGLE WITH MAX VOLUME SCREW
3. REMOVE FIXED CLEARANCE HOLD DOWN SCREWS AND HOLD DOWN PARTS
4. REMOVE ROTATING GROUP (BARREL, SLIPPER RETAINER AND PISTONS)
5. REMOVE SHAFT SEAL CARRIER
6. REMOVE SHAFT
7. REMOVE BIAS SPRING PLUG, SPRING AND RETAINER
8. REMOVE MAX. VOLUME ASSY
9. REMOVE SERVO PISTON
10. REMOVE SWASHPLATE ASSEMBLY

SHAFT SEAL REPLACEMENT

1. REMOVE SEAL CARRIER ONLY
2. REMOVE OLD SEAL
3. INSPECT SHAFT
4. IF SHAFT IS WORN INSTALL NEW SEAL
IN INNER LOCATION FOR SINGLE SEAL
APPLICATIONS (SEE SHEET 1).
REPLACE SHAFT FOR DUAL SEAL APPLICATIONS

NOTES:

