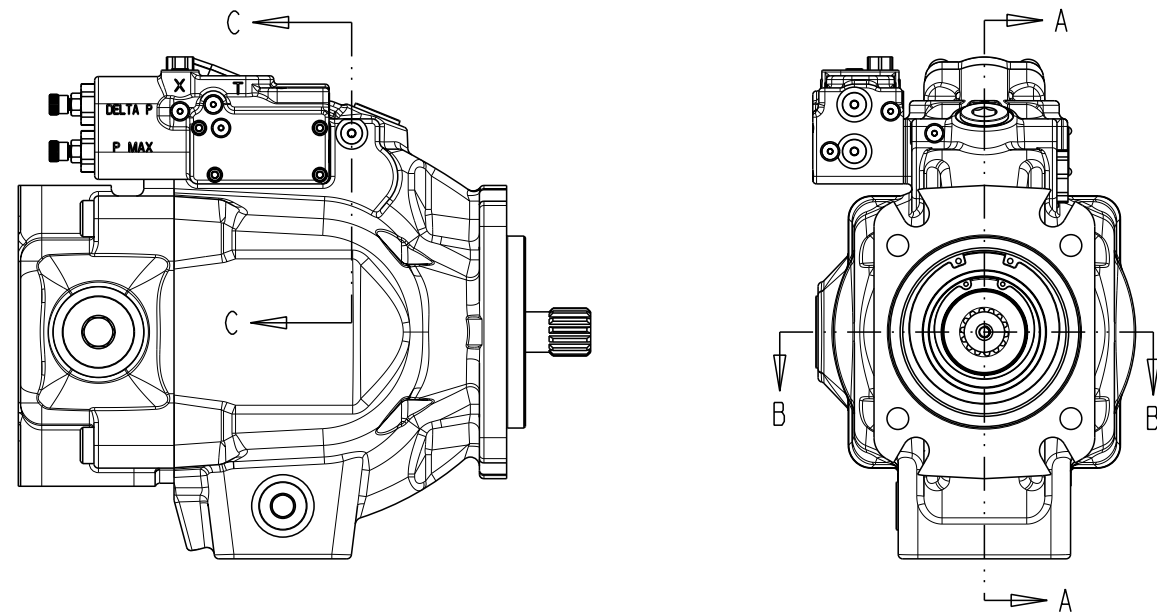
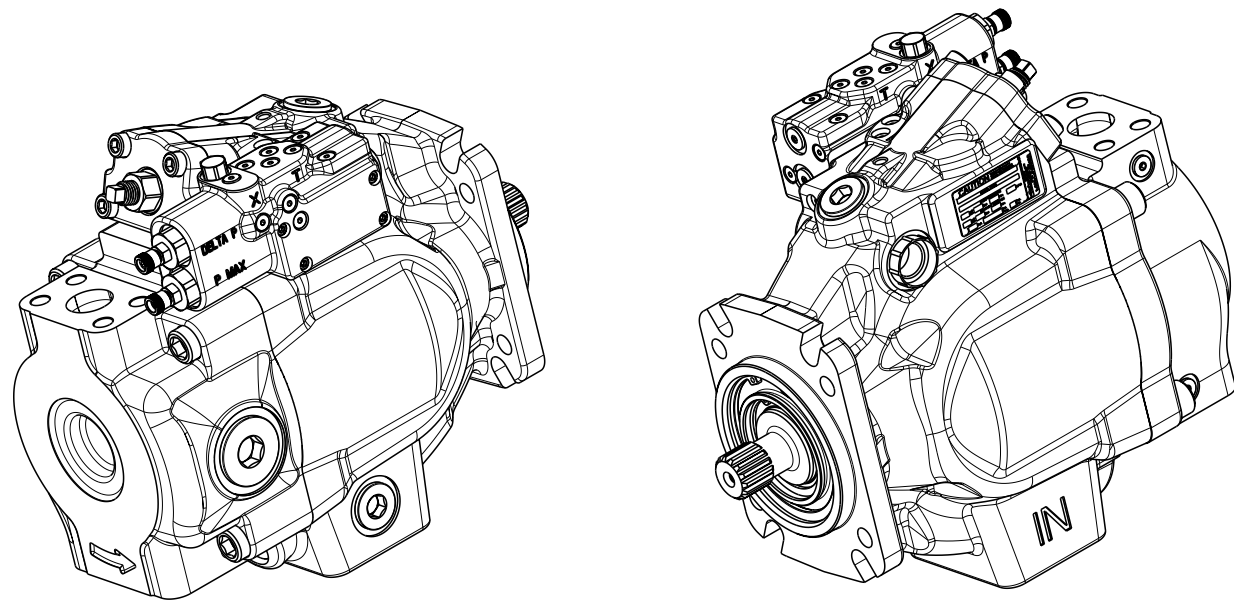
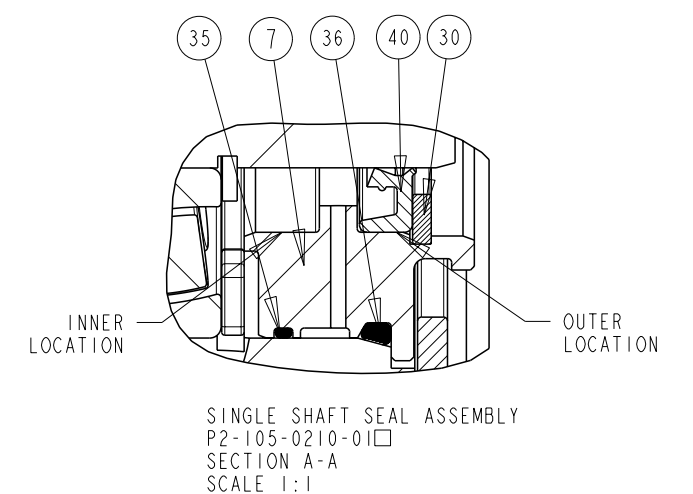
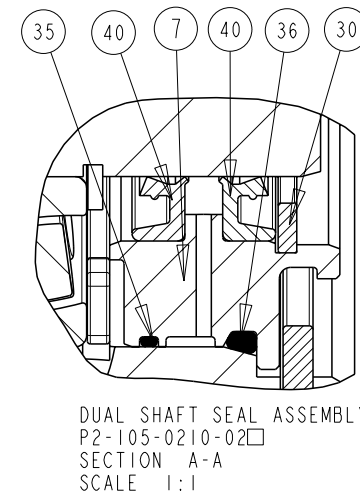
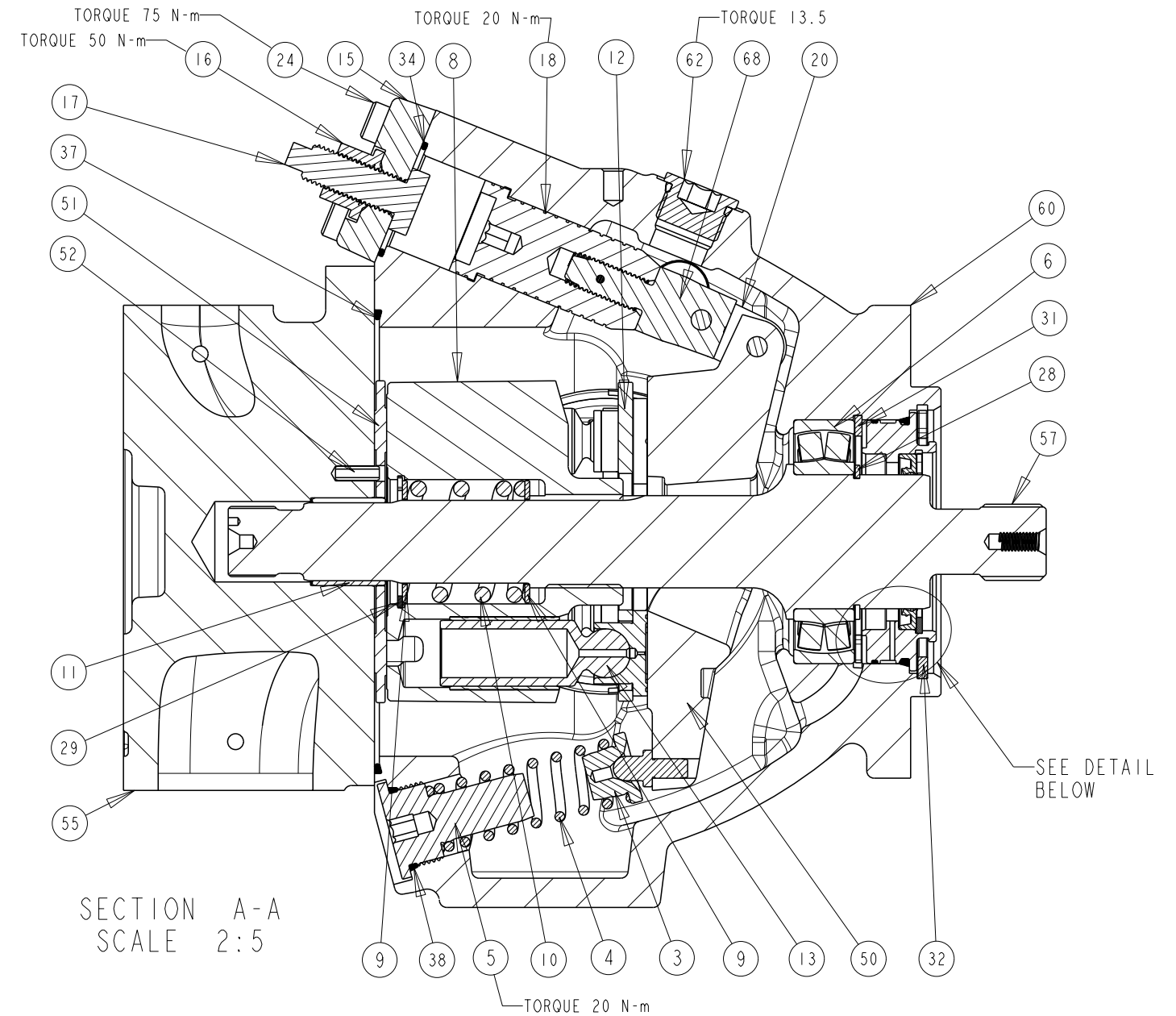


TITLE	SERVICE PARTS P2105 DESIGN SERIES 12	DRAWING NUMBER	P2-105-0405	REVISION	A	STATUS	PR	SHEET 1 OF 7
-------	---	----------------	-------------	----------	---	--------	----	--------------

DRAWN BY	J. HOEY	DATE	22NOV04	CHANGED BY	J. LAMBERS	DATE	29MAY30	ECN NUMBER	134595
----------	---------	------	---------	------------	------------	------	---------	------------	--------

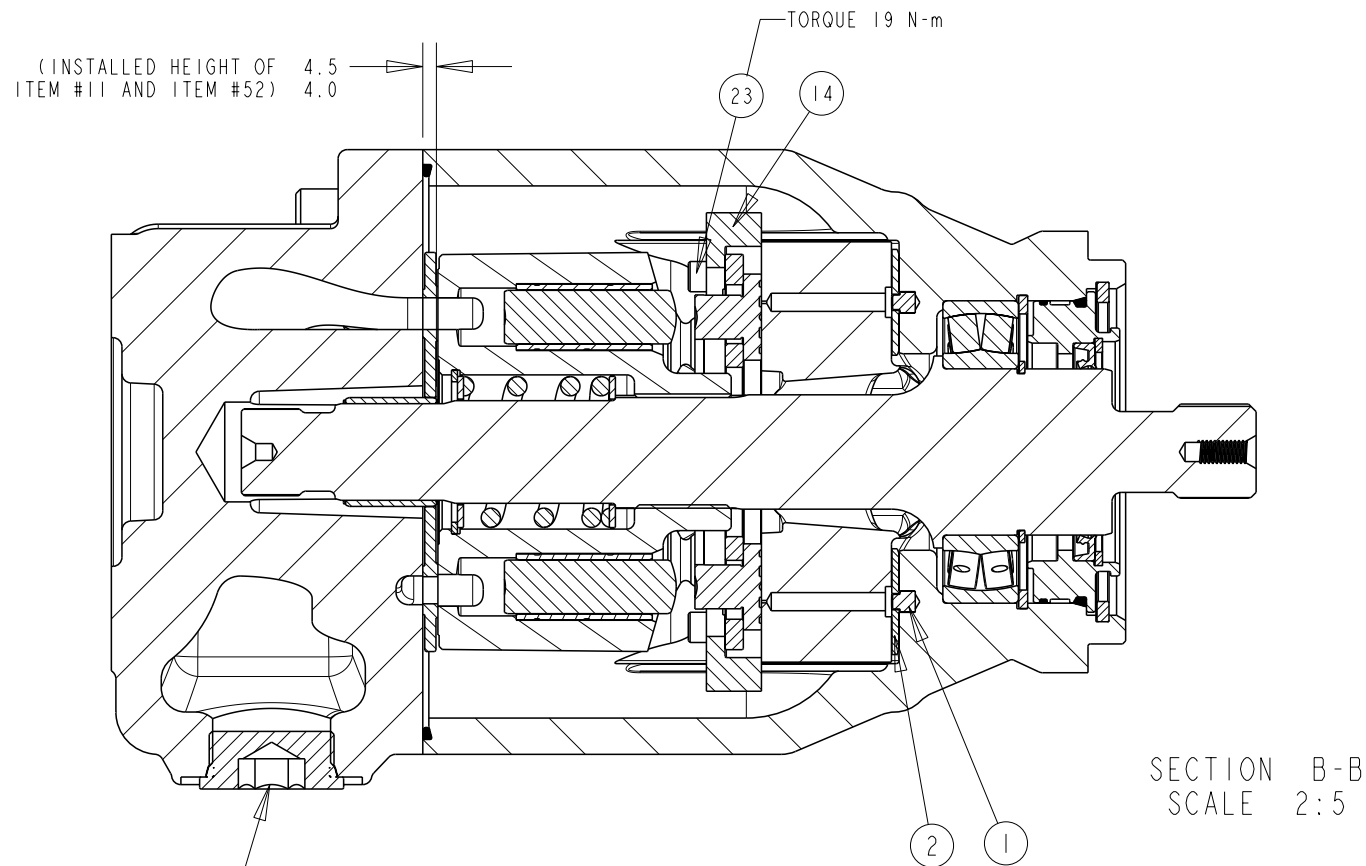


NOTES:
1 PUMP SHOWN IS A RIGHT HAND (CW) ROTATION PUMP. LEFT HAND (CCW) ROTATION PUMPS HAVE OUTLET GAUGE PORT REVERSED.

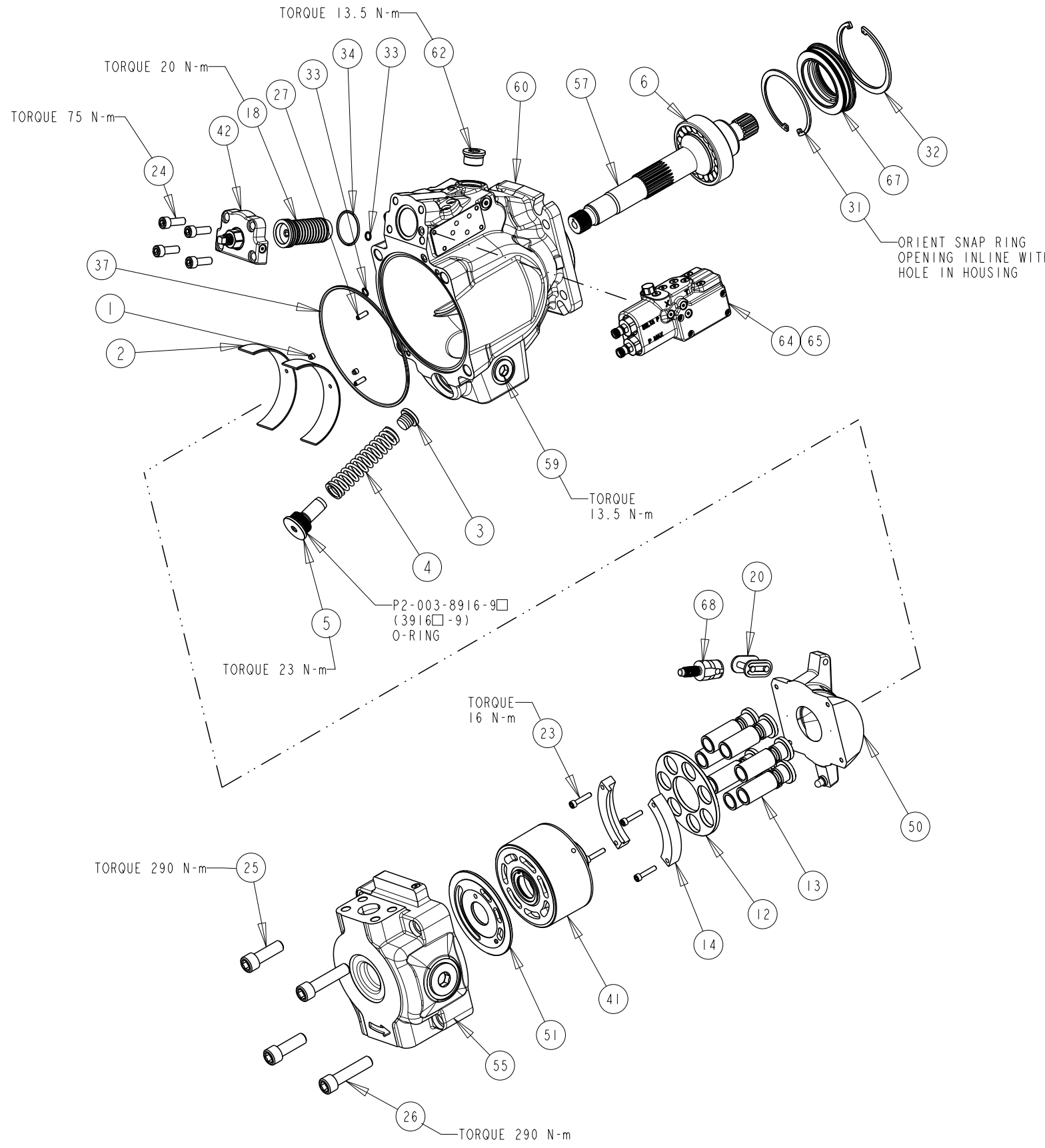
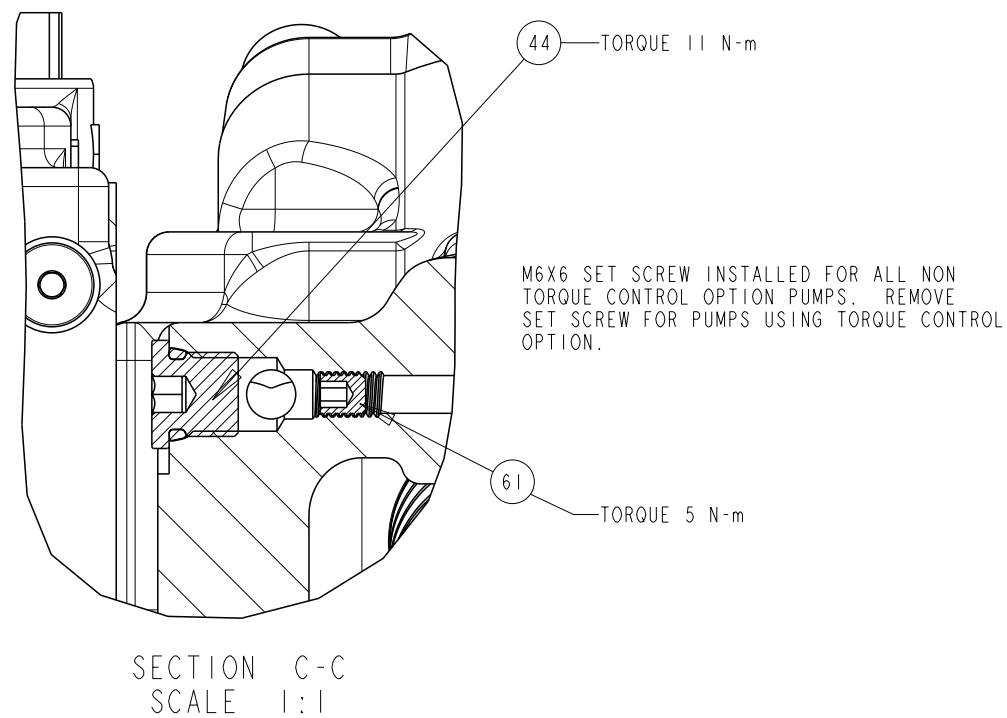


TITLE	SERVICE PARTS P2105 DESIGN SERIES 12	DRAWING NUMBER	P2-105-0405	REVISION	A	STATUS	PR	SHEET 2 OF 7
-------	---	----------------	-------------	----------	---	--------	----	--------------

DRAWN BY	J. HOEY	DATE	22NOV04	CHANGED BY	J. LAMBERS	DATE	30MAY06	ECN NUMBER	134595
----------	---------	------	---------	------------	------------	------	---------	------------	--------



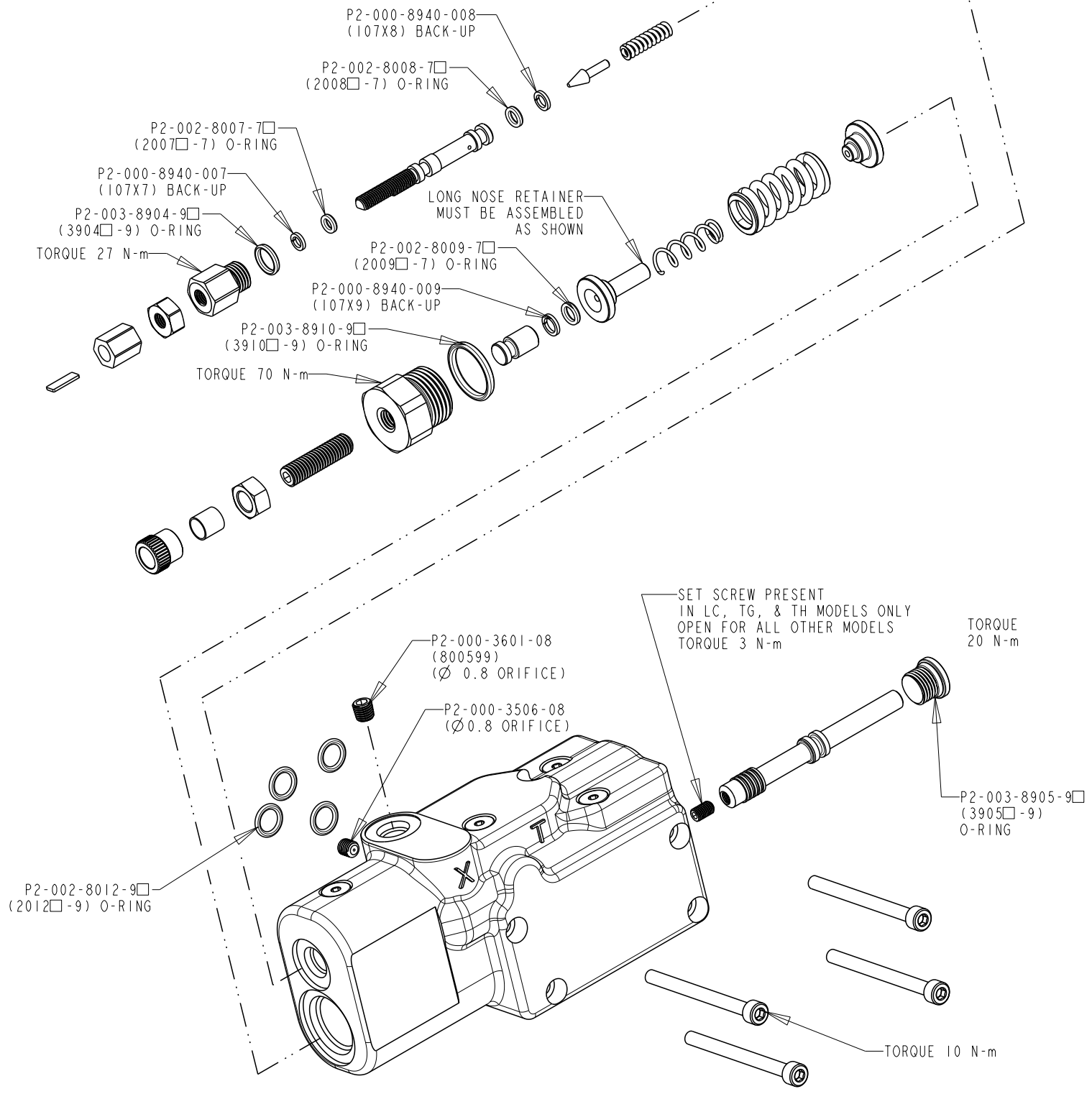
SAE: P2-000-8960-20□
(108X20□)
6149: P2-000-8964-20□
(788516-20□)
TORQUE 425 N-m



TITLE	DRAWING NUMBER	REVISION	STATUS	SHEET
SERVICE PARTS P2105 DESIGN SERIES 12	P2-105-0405	A	PR	3 OF 7

COMPENSATOR KITS

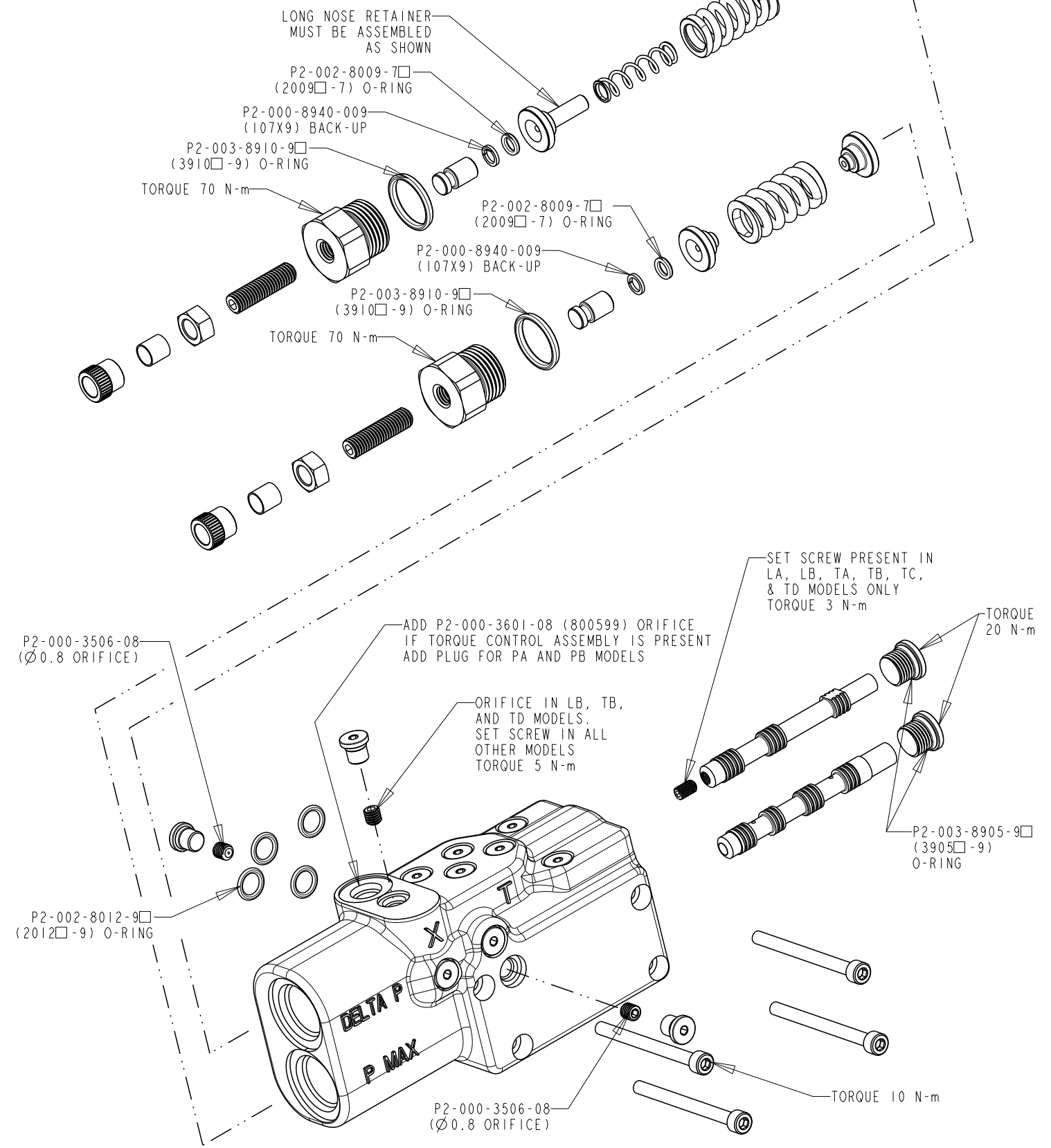
SINGLE SPOOL OPTIONS - ITEM 64



DRAWN BY	DATE	CHANGED BY	DATE	ECN NUMBER
J. HOEY	22NOV04	J. LAMBERS	30MAY06	134595

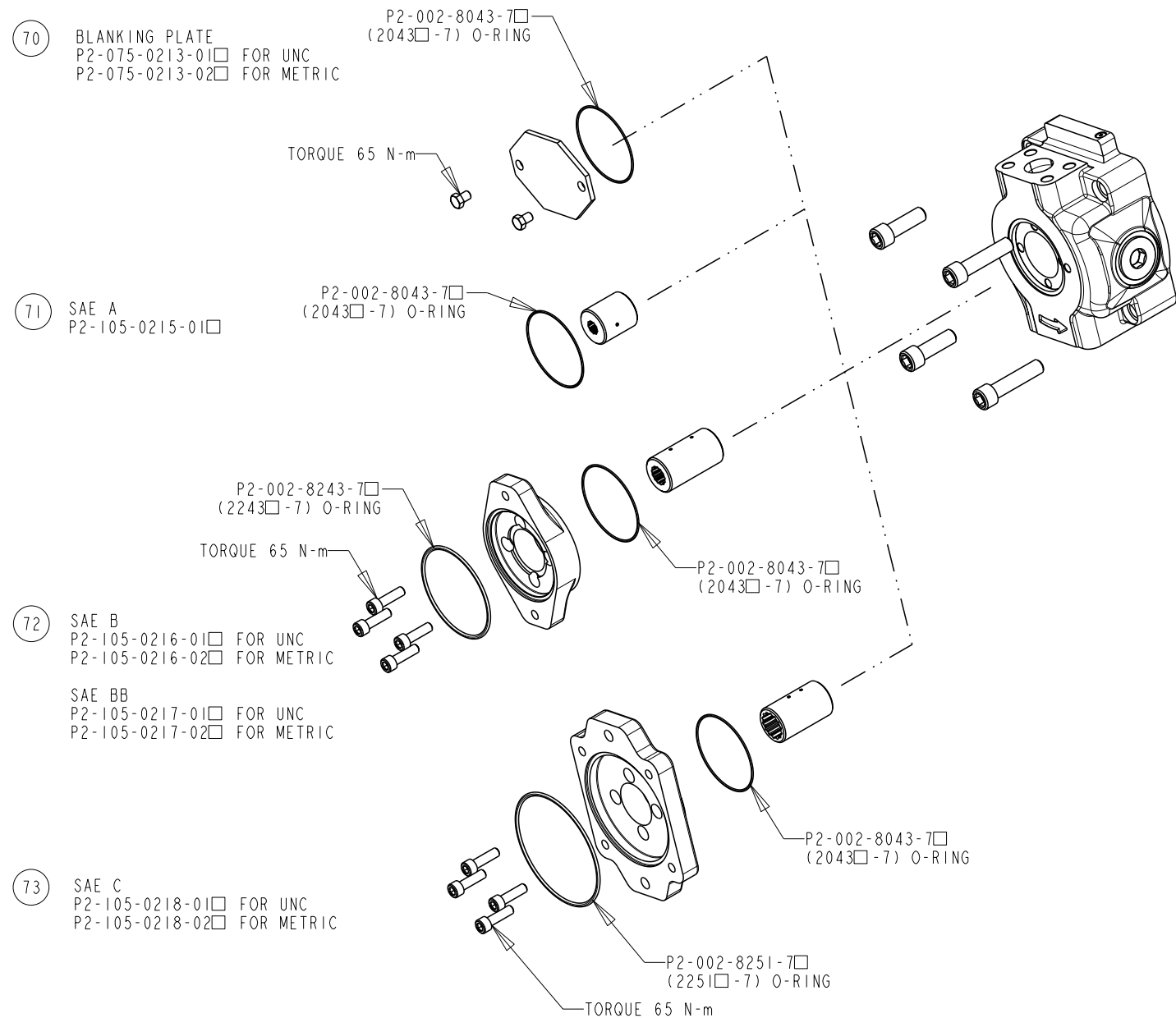
COMPENSATOR KITS

DUAL SPOOL OPTIONS - ITEM 65



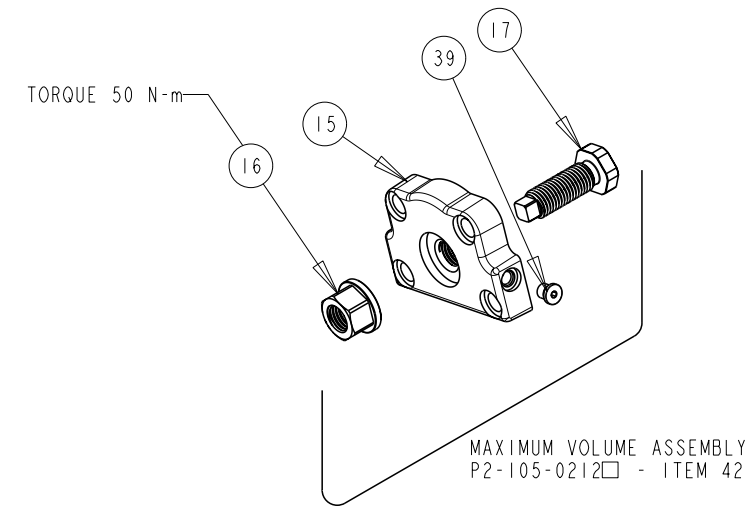
TITLE	SERVICE PARTS P2105 DESIGN SERIES 12	DRAWING NUMBER	P2-105-0405	REVISION	A	STATUS	PR	SHEET 4 OF 7
-------	---	----------------	-------------	----------	---	--------	----	--------------

THRU DRIVE KITS

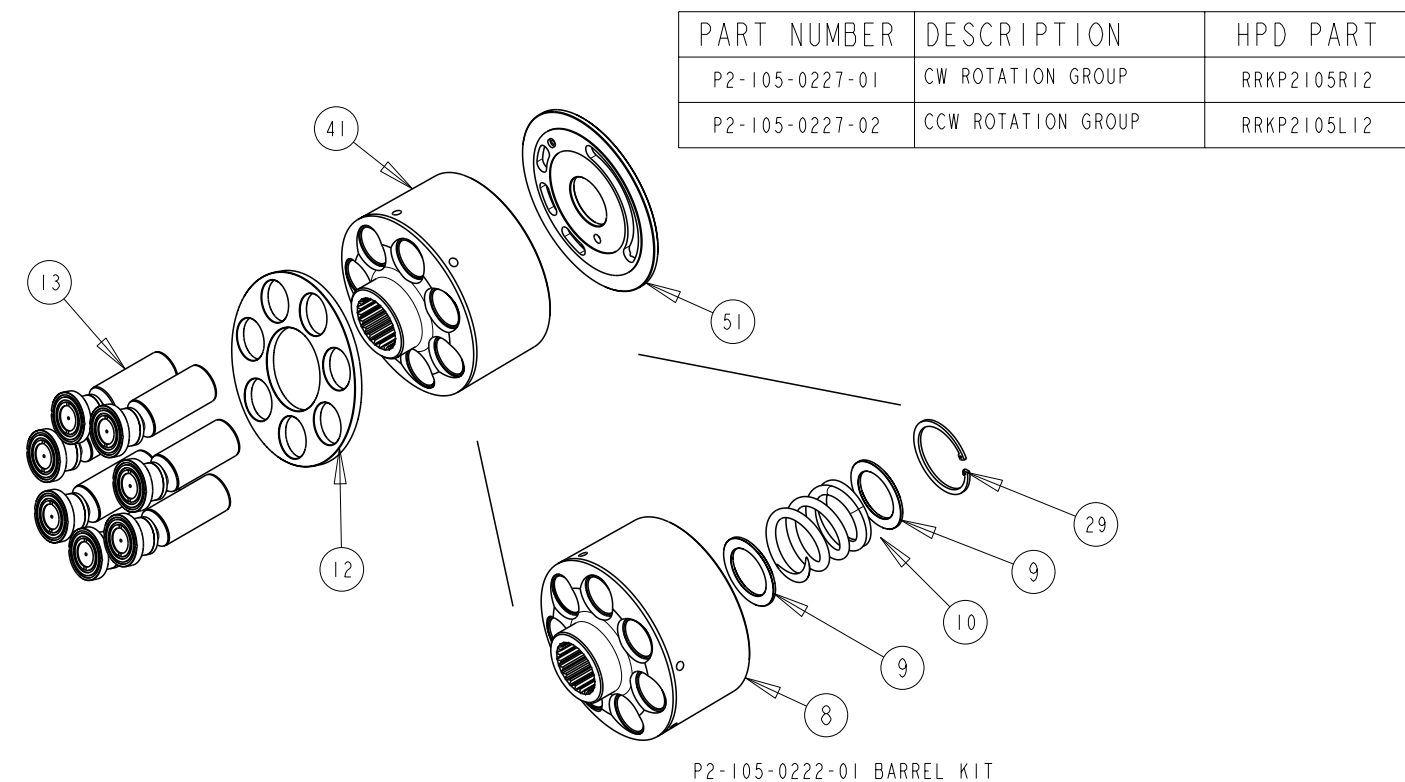


DRAWN BY	J. HOEY	DATE	22NOV04	CHANGED BY	J. LAMBERS	DATE	30MAY06	ECN NUMBER	134595
----------	---------	------	---------	------------	------------	------	---------	------------	--------

MAX VOLUME ASSEMBLY

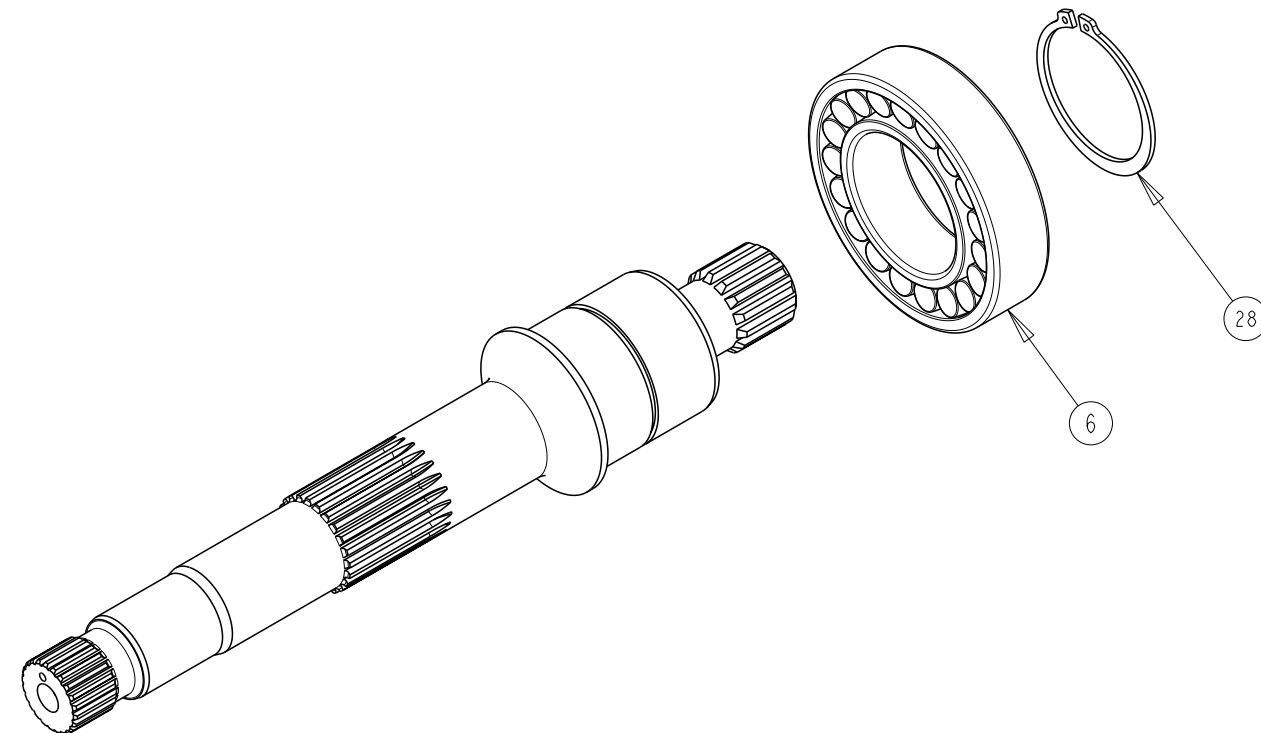


BARREL KIT AND ROTATION GROUP KIT



TITLE	DRAWING NUMBER	REVISION	STATUS	SHEET
SERVICE PARTS P2105 DESIGN SERIES 12	P2-105-0405	A	PR	5 OF 7

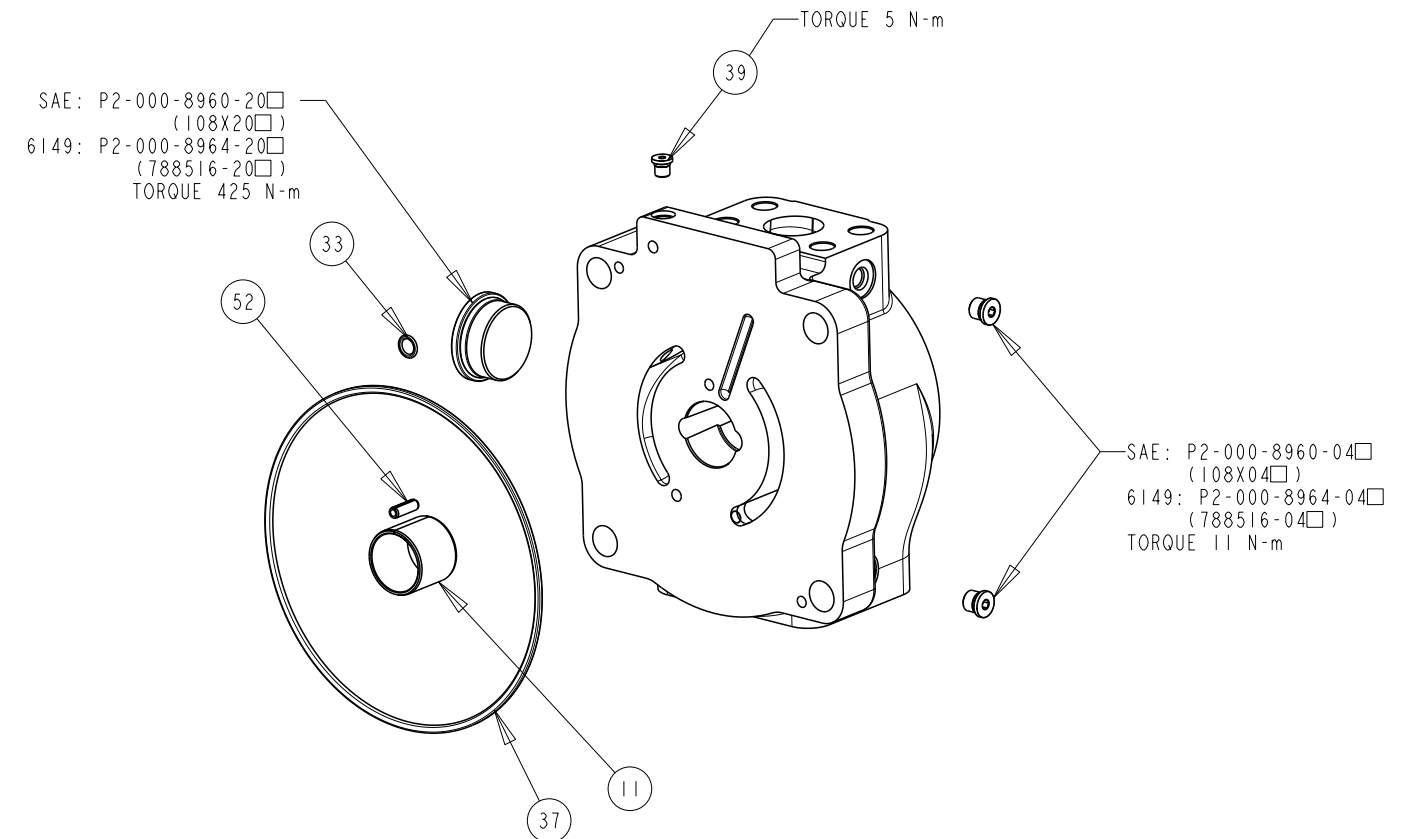
SHAFT ASSEMBLY KITS ITEM 57



SHAFT ONLY	SHAFT ASSEMBLY	DESCRIPTION
P2-105-3525	P2-105-0225-36	C SPLINE THRU
P2-105-3527	P2-105-0225-38	CC SPLINE THRU
P2-105-3519	P2-105-0225-40	D SPLINE THRU
P2-105-3533	P2-105-0225-46	C KEY THRU
P2-105-3535	P2-105-0225-48	CC KEY THRU
P2-105-3520	P2-105-0225-56	C SPLINE THRU NO UNDERCUT
P2-105-3546	P2-105-0225-60	D SPLINE THRU NO UNDERCUT

DRAWN BY	DATE	CHANGED BY	DATE	ECN NUMBER
J. HOEY	22NOV04	J. LAMBERS	30MAY06	134595

COVER ASSEMBLY KITS ITEM 55



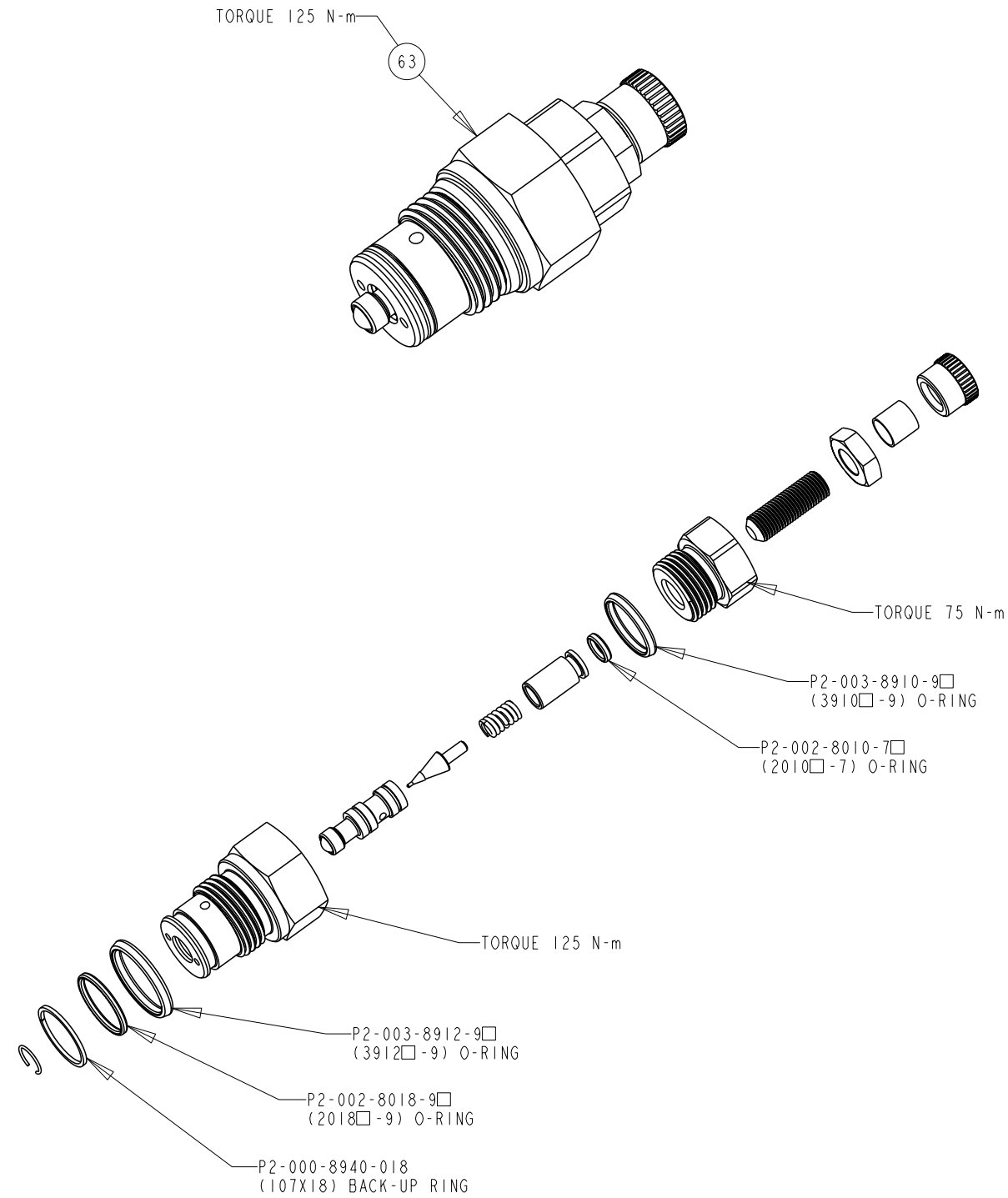
COVER ONLY	COVER ASSEMBLY	DESCRIPTION
P2-105-1013-01	P2-105-0226-01□	SIDE PORTS, CCW, UNC
P2-105-1013-02	P2-105-0226-02□	SIDE PORTS, CCW, UNC, THRU
P2-105-1013-03	P2-105-0226-03□	SIDE PORTS, CCW, METRIC
P2-105-1013-04	P2-105-0226-04□	SIDE PORTS, CCW, METRIC, THRU
P2-105-1014-01	P2-105-0226-05□	SIDE PORTS, CW, UNC
P2-105-1014-02	P2-105-0226-06□	SIDE PORTS, CW, UNC, THRU
P2-105-1014-03	P2-105-0226-07□	SIDE PORTS, CW, METRIC
P2-105-1014-04	P2-105-0226-08□	SIDE PORTS, CW, METRIC THRU

TITLE	DRAWING NUMBER	REVISION	STATUS	SHEET
SERVICE PARTS P2105 DESIGN SERIES 12	P2-105-0405	A	PR	SHEET 6 OF 7

DRAWN BY	DATE	CHANGED BY	DATE	ECN NUMBER
J. HOEY	22NOV04	J. LAMBERS	30MAY06	134595

TORQUE CONTROL CARTRIDGE

P2-000-0803 □ - ITEM 63



ASSEMBLY, DIS-ASSEMBLY AND REPAIR NOTES

DISASSEMBLY STEPS FOR ENTIRE PUMP

1. REMOVE COVER SCREWS AND COVER
2. DE-STROKE PUMP TO MINIMUM ANGLE WITH MAX VOLUME SCREW
3. REMOVE FIXED CLEARANCE HOLD DOWN SCREWS AND HOLD DOWN PARTS
4. REMOVE ROTATING GROUP (BARREL, SLIPPER RETAINER AND PISTONS)
5. REMOVE SHAFT SEAL CARRIER
6. REMOVE SHAFT
7. REMOVE BIAS SPRING PLUG, SPRING AND RETAINER
8. REMOVE MAX. VOLUME ASSY
9. REMOVE SERVO PISTON
10. REMOVE SWASHPLATE ASSEMBLY

SHAFT SEAL REPLACEMENT

1. REMOVE SEAL CARRIER ONLY
2. REMOVE OLD SEAL
3. INSPECT SHAFT
4. IF SHAFT IS WORN INSTALL NEW SEAL IN INNER LOCATION FOR SINGLE SEAL APPLICATIONS (SEE SHEET 1).
REPLACE SHAFT FOR DUAL SEAL APPLICATIONS

