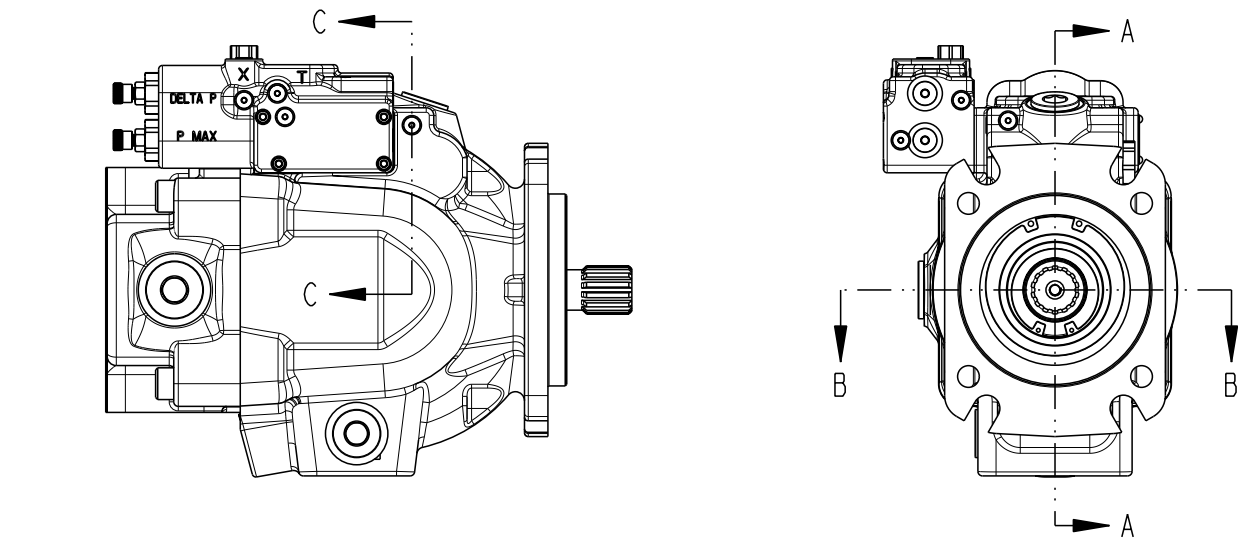
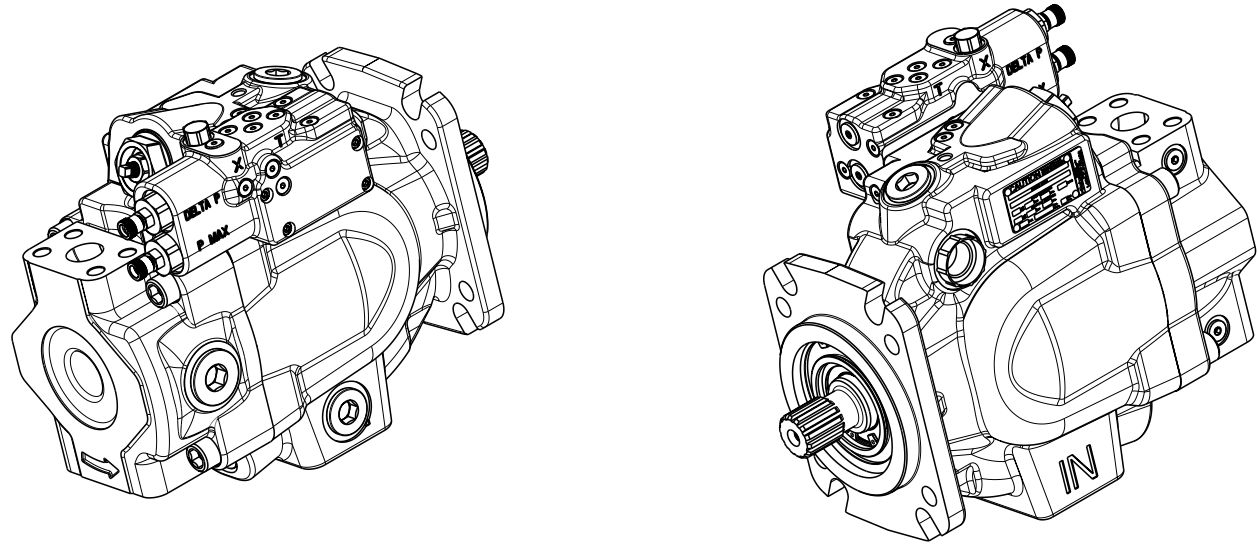
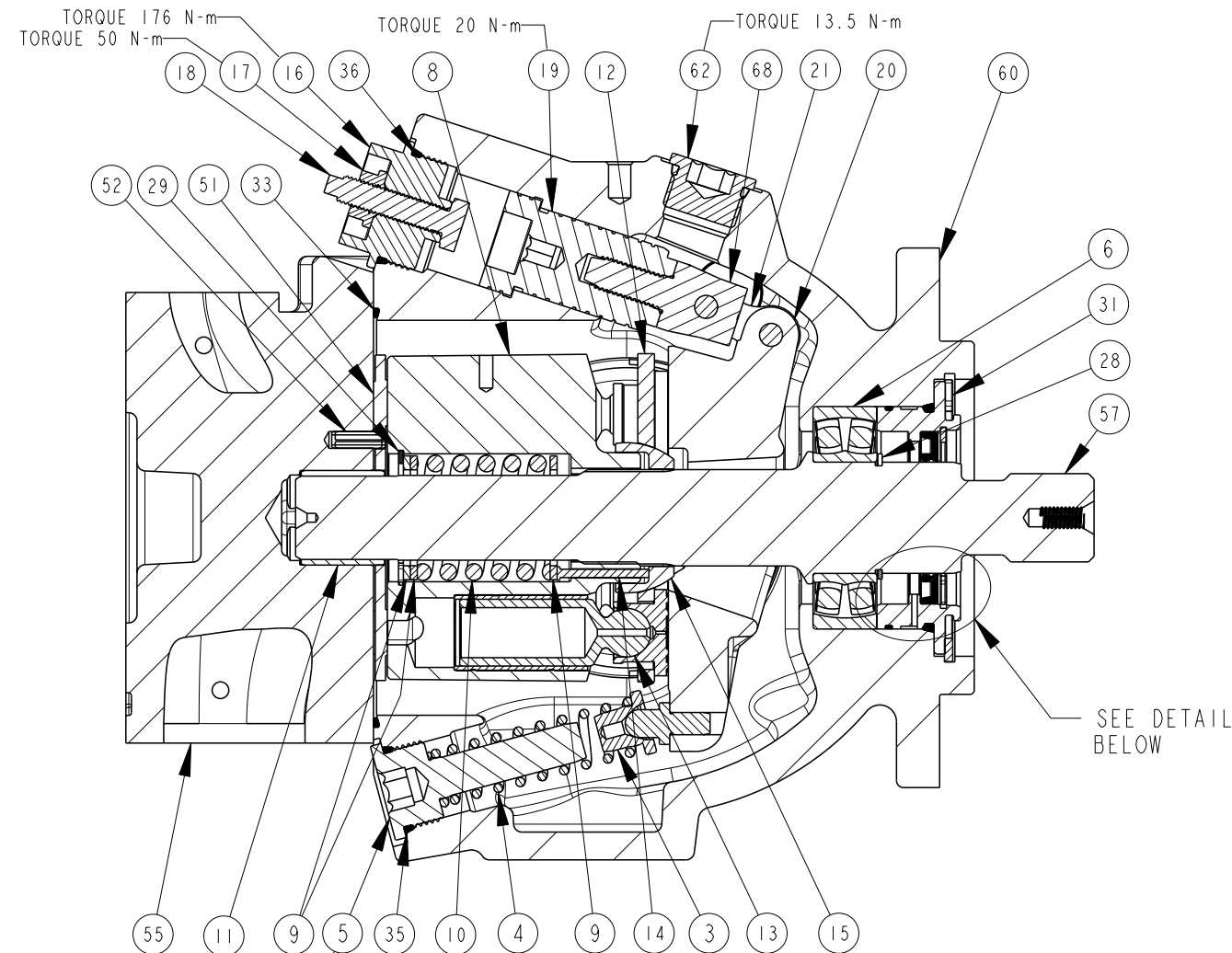


TITLE	SERVICE PARTS P2075 DESIGN SERIES 12	DRAWING NUMBER	P2-075-0405	REVISION	A	STATUS	PR	SHEET 1 OF 7
-------	---	----------------	-------------	----------	---	--------	----	--------------

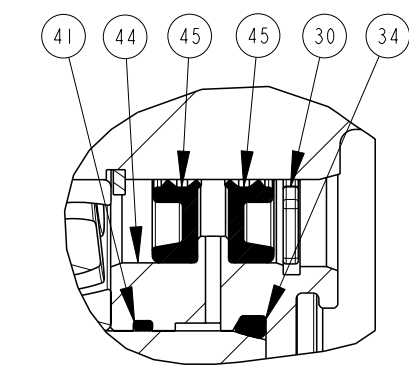
DRAWN BY	STREHLOW	DATE	29NOV04	CHANGED BY	J. LAMBERS	DATE	30MAY06	ECN NUMBER	134595
----------	----------	------	---------	------------	------------	------	---------	------------	--------



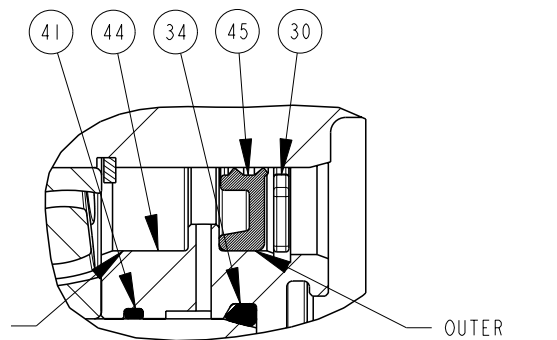
NOTES:
1 PUMP SHOWN IS A RIGHT HAND (CW) ROTATION PUMP. LEFT HAND (CCW) ROTATION PUMPS HAVE OUTLET GAUGE PORT REVERSED.



SECTION A-A
SCALE 2:5



DUAL SHAFT SEAL ASSEMBLY
P2-075-0210-02
SECTION A-A
SCALE 1:1

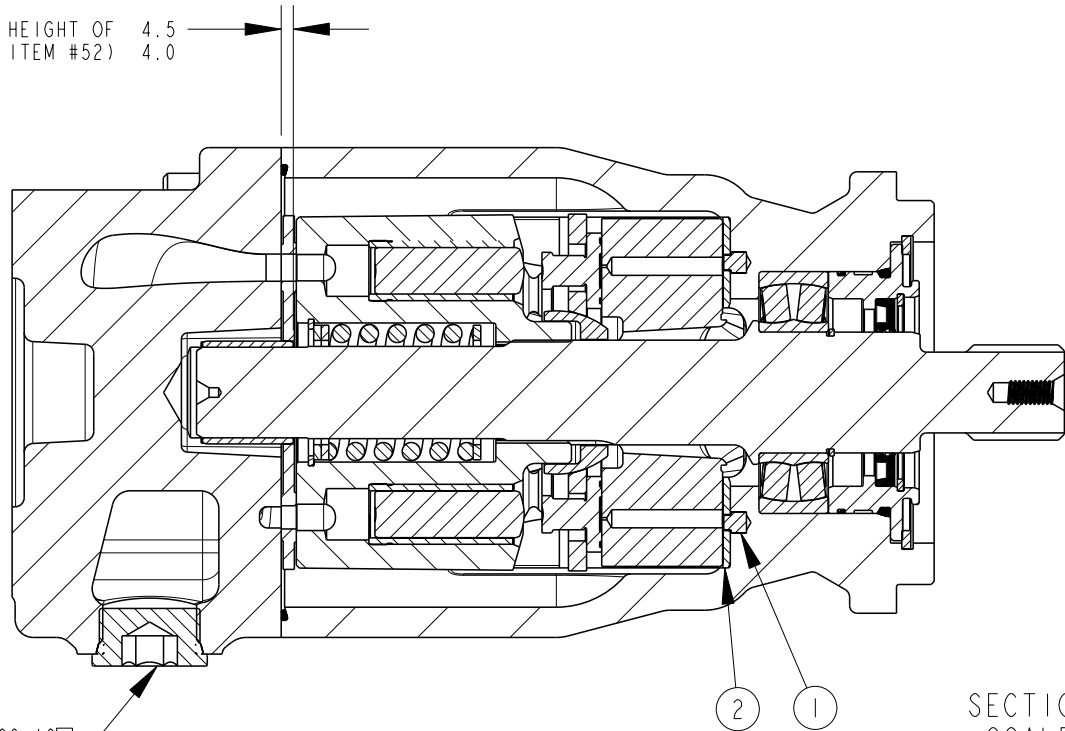


SINGLE SHAFT SEAL ASSEMBLY
P2-075-0210-01
SECTION A-A
SCALE 1:1

TITLE	DRAWING NUMBER	REVISION	STATUS	SHEET 2 OF 7
SERVICE PARTS P2075 DESIGN SERIES 12	P2-075-0405	A	PR	

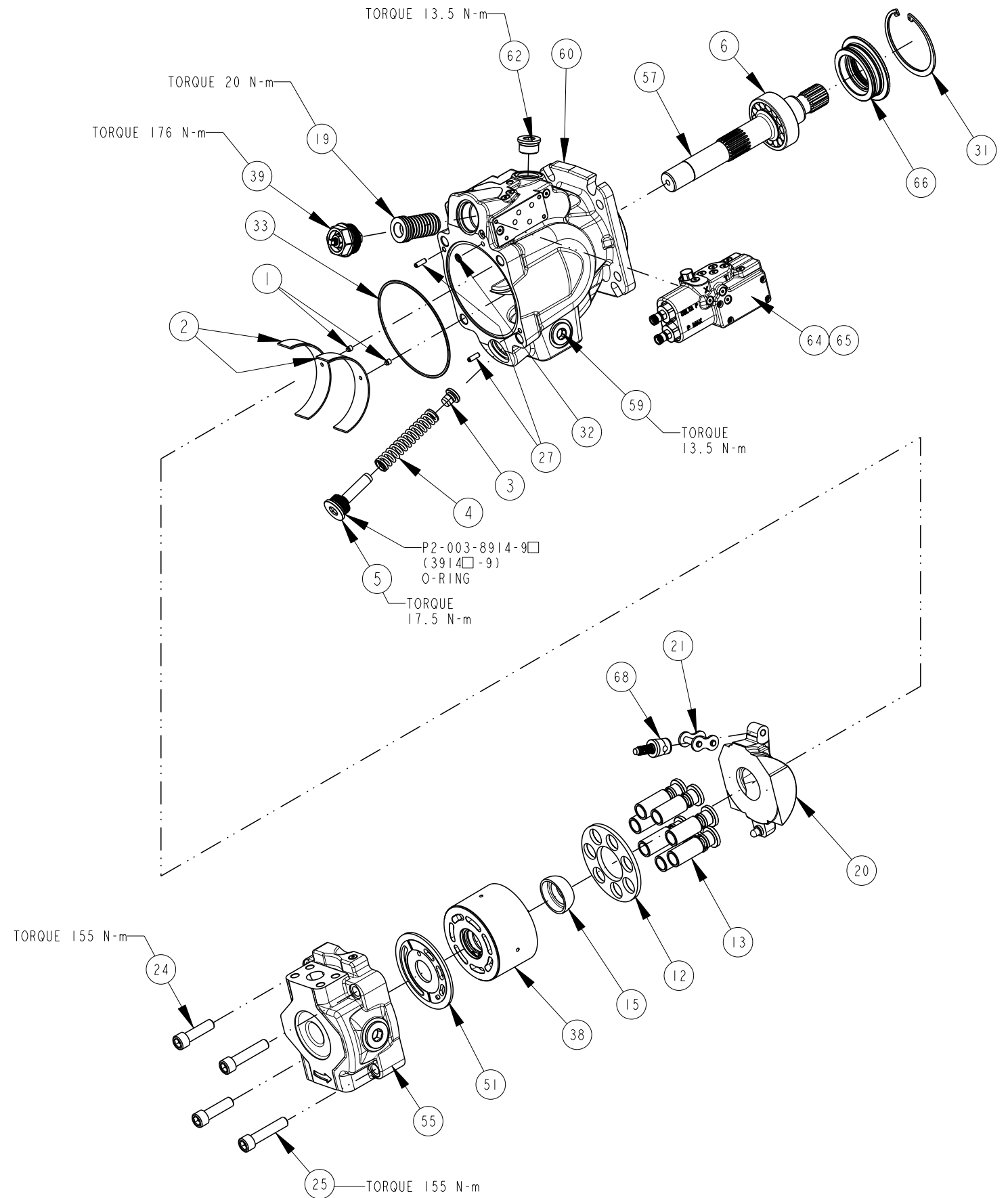
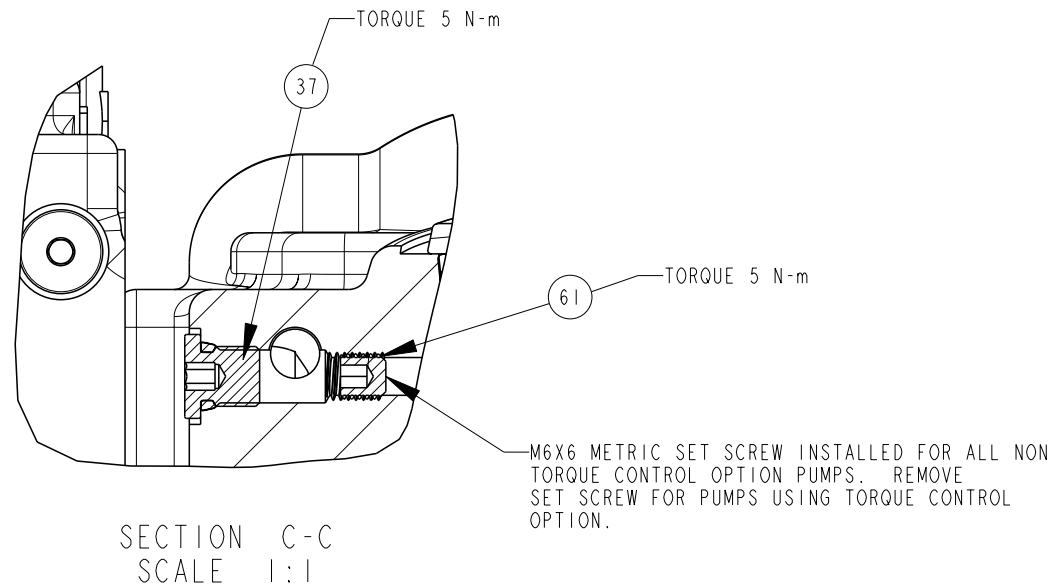
DRAWN BY	DATE	CHANGED BY	DATE	ECN NUMBER
STREHLOW	29NOV04	J. LAMBERS	30MAY06	SEE SHEET 1

(INSTALLED HEIGHT OF
ITEM #11 AND ITEM #52) 4.5
4.0



SECTION B-B
SCALE 2:5

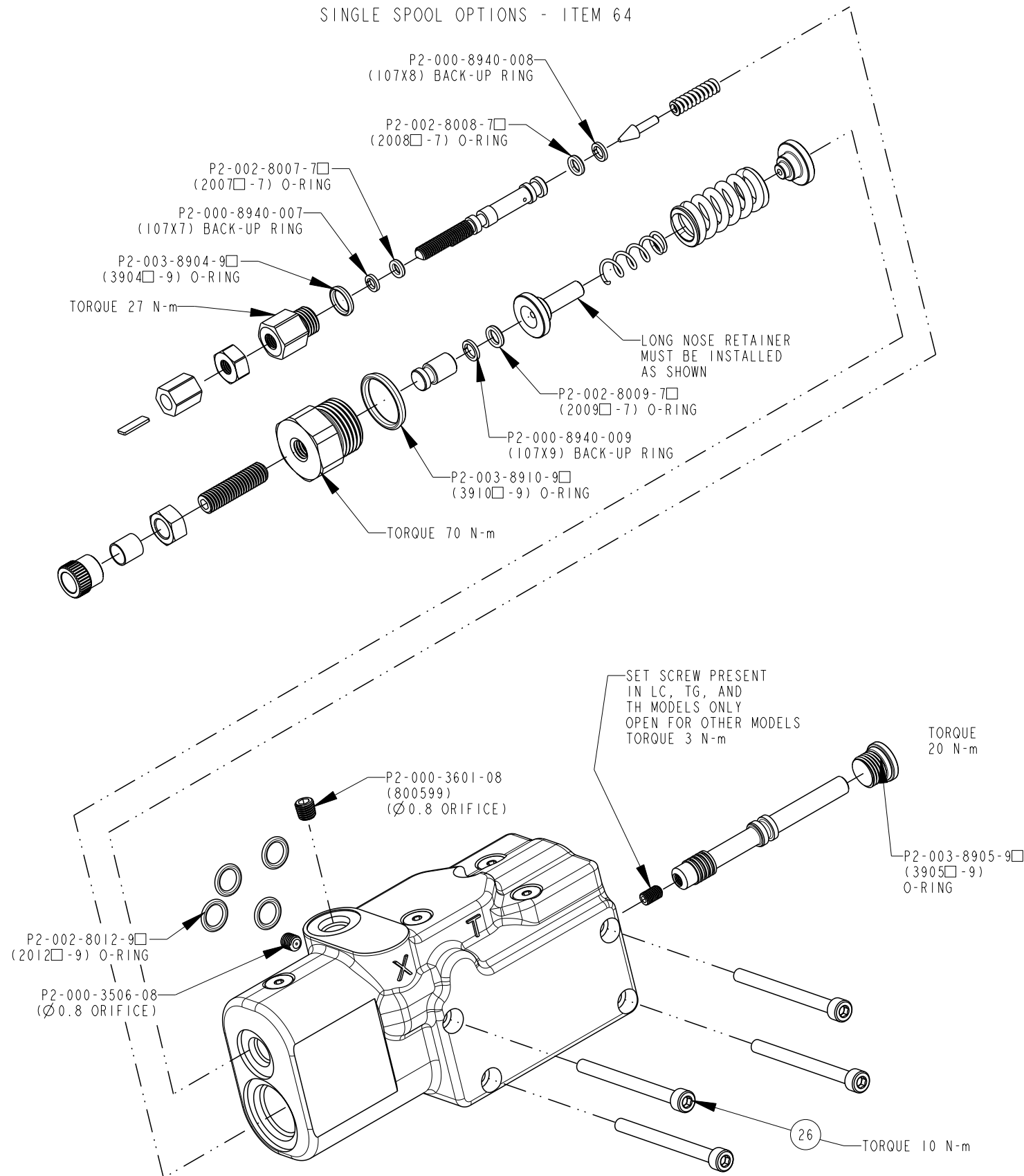
SAE: P2-000-8960-16□
(108x16□)
6149: P2-000-8964-16□
(788516-16□)
TORQUE 230 N-m



TITLE	SERVICE PARTS P2075 DESIGN SERIES 12	DRAWING NUMBER	P2-075-0405	REVISION	A	STATUS	PR	SHEET 3 OF 7
-------	---	----------------	-------------	----------	---	--------	----	--------------

COMPENSATOR KITS

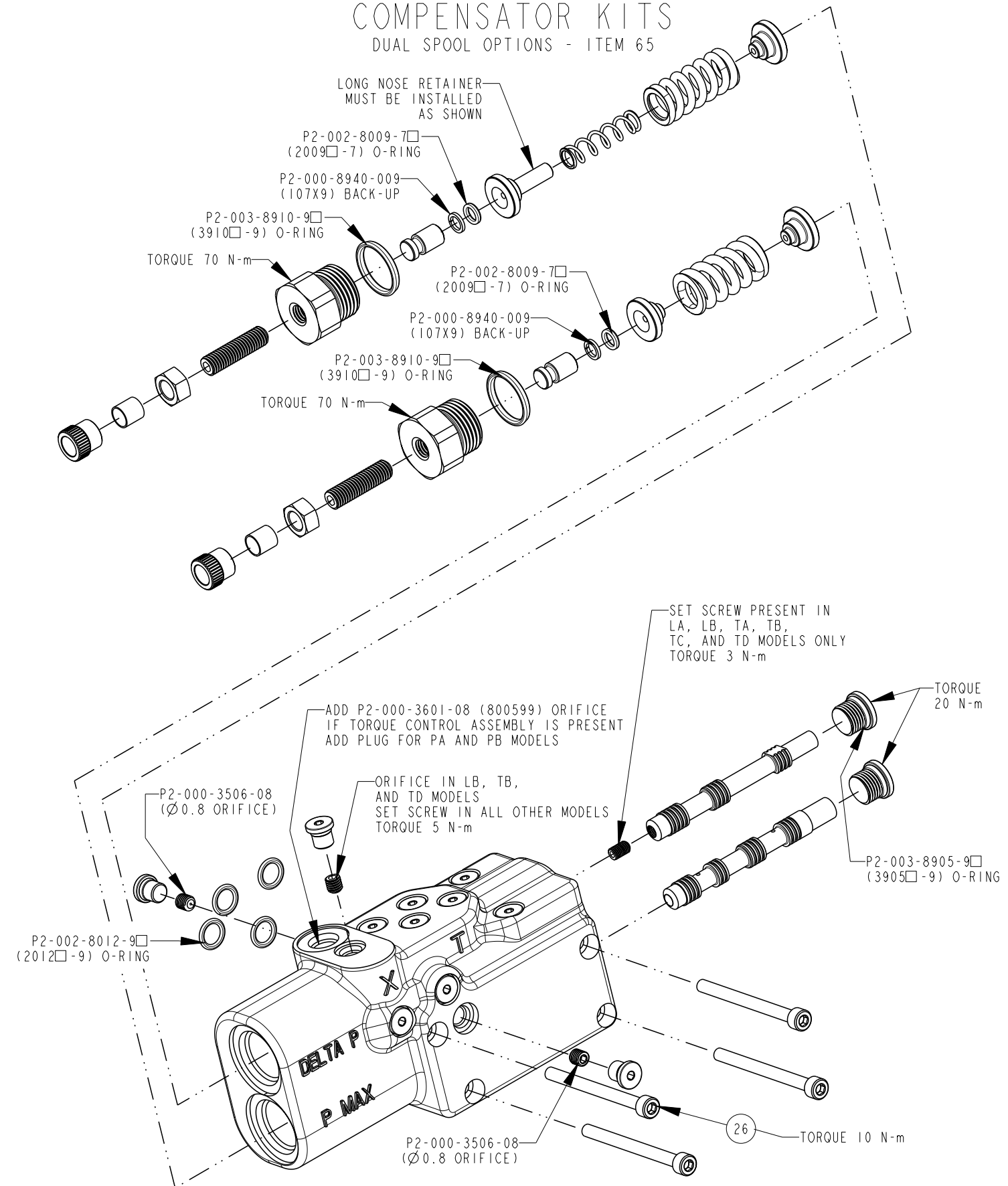
SINGLE SPOOL OPTIONS - ITEM 64



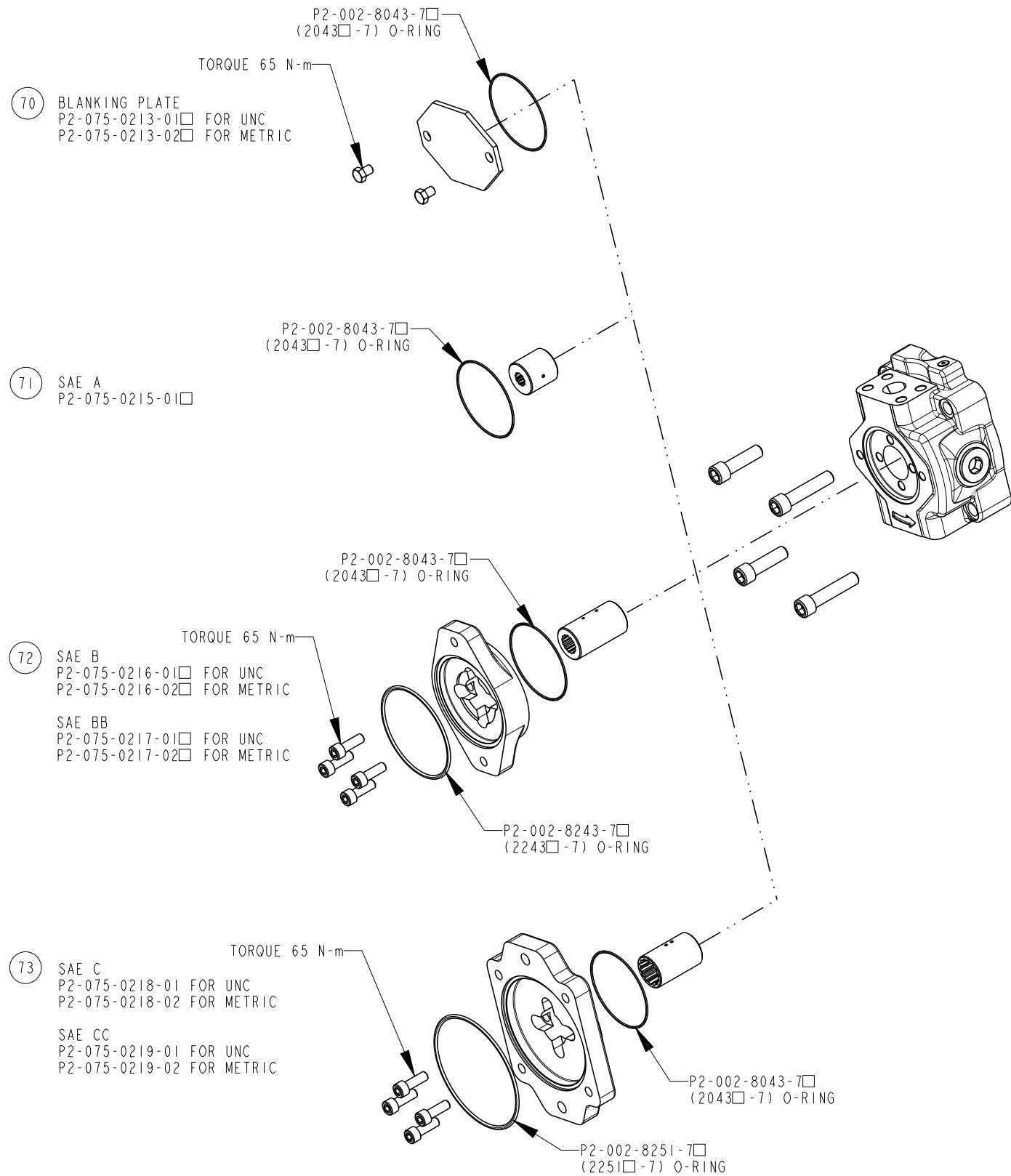
DRAWN BY	STREHLOW	DATE	29DEC04	CHANGED BY	J. LAMBERS	DATE	30MAY06	ECN NUMBER	SEE SHEET 1
----------	----------	------	---------	------------	------------	------	---------	------------	-------------

COMPENSATOR KITS

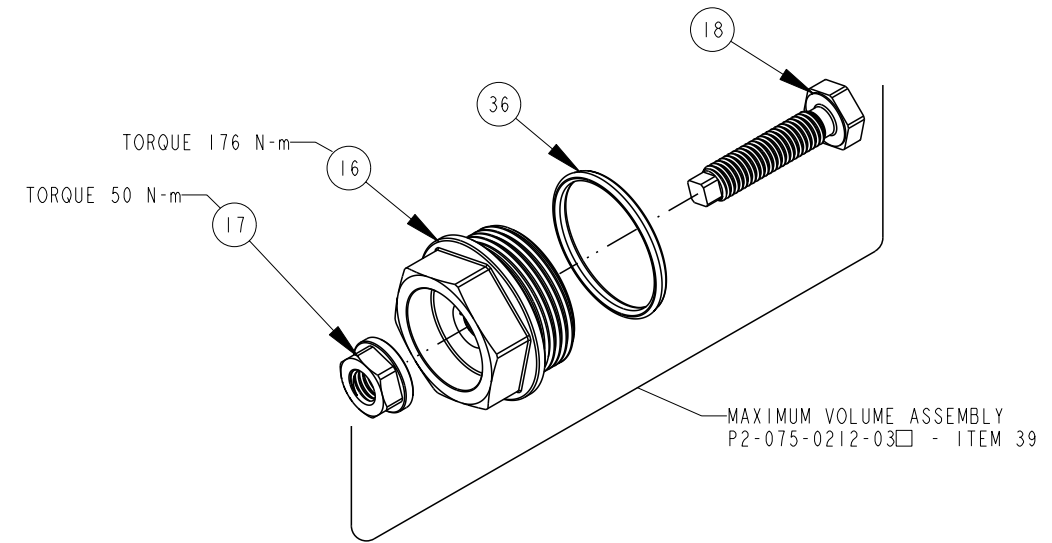
DUAL SPOOL OPTIONS - ITEM 65



THRU DRIVE KITS

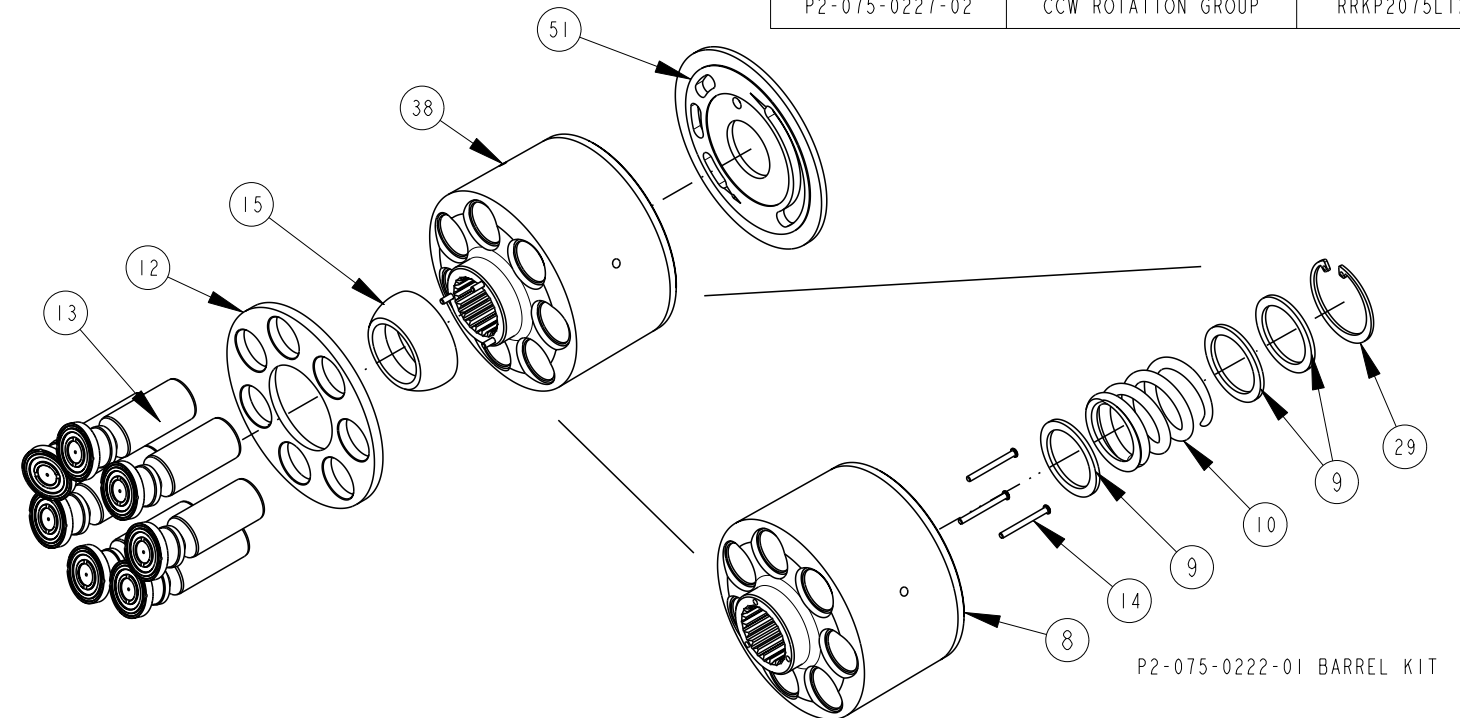


MAX VOLUME ASSEMBLY



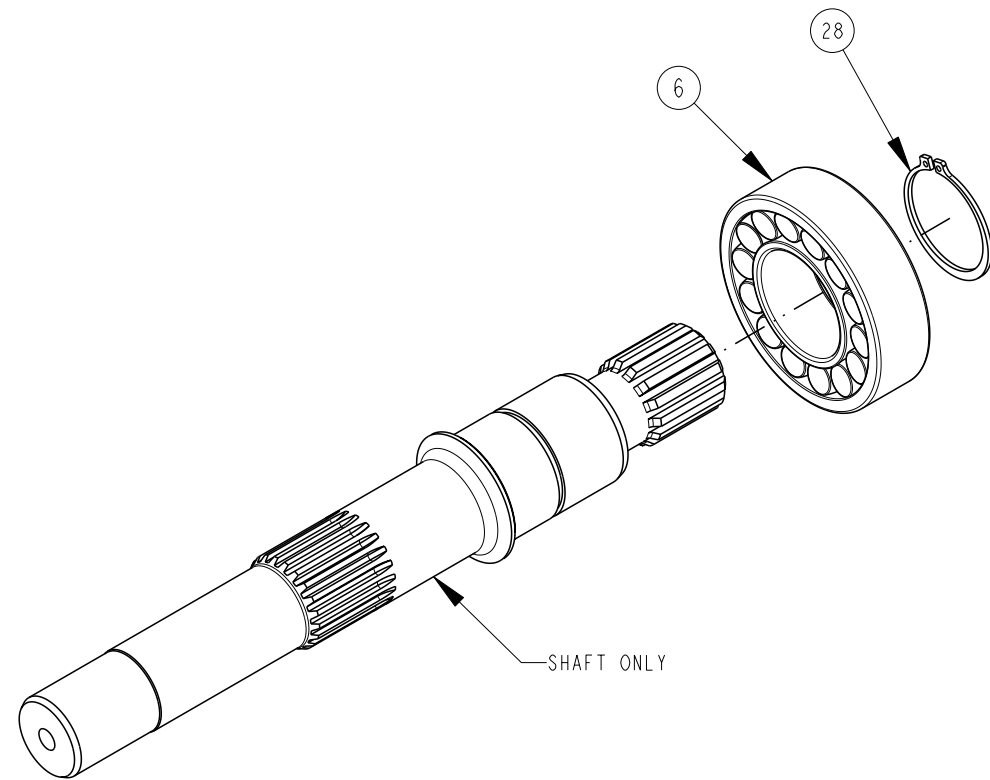
BARREL KIT AND ROTATION GROUP KIT

PART NUMBER	DESCRIPTION	HPD PART
P2-075-0227-01	CW ROTATION GROUP	RRKP2075R12
P2-075-0227-02	CCW ROTATION GROUP	RRKP2075L12



TITLE	DRAWING NUMBER	REVISION	STATUS	SHEET
SERVICE PARTS P2075 DESIGN SERIES 12	P2-075-0405	A	PR	5 OF 7

SHAFT ASSEMBLY KITS ITEM 57

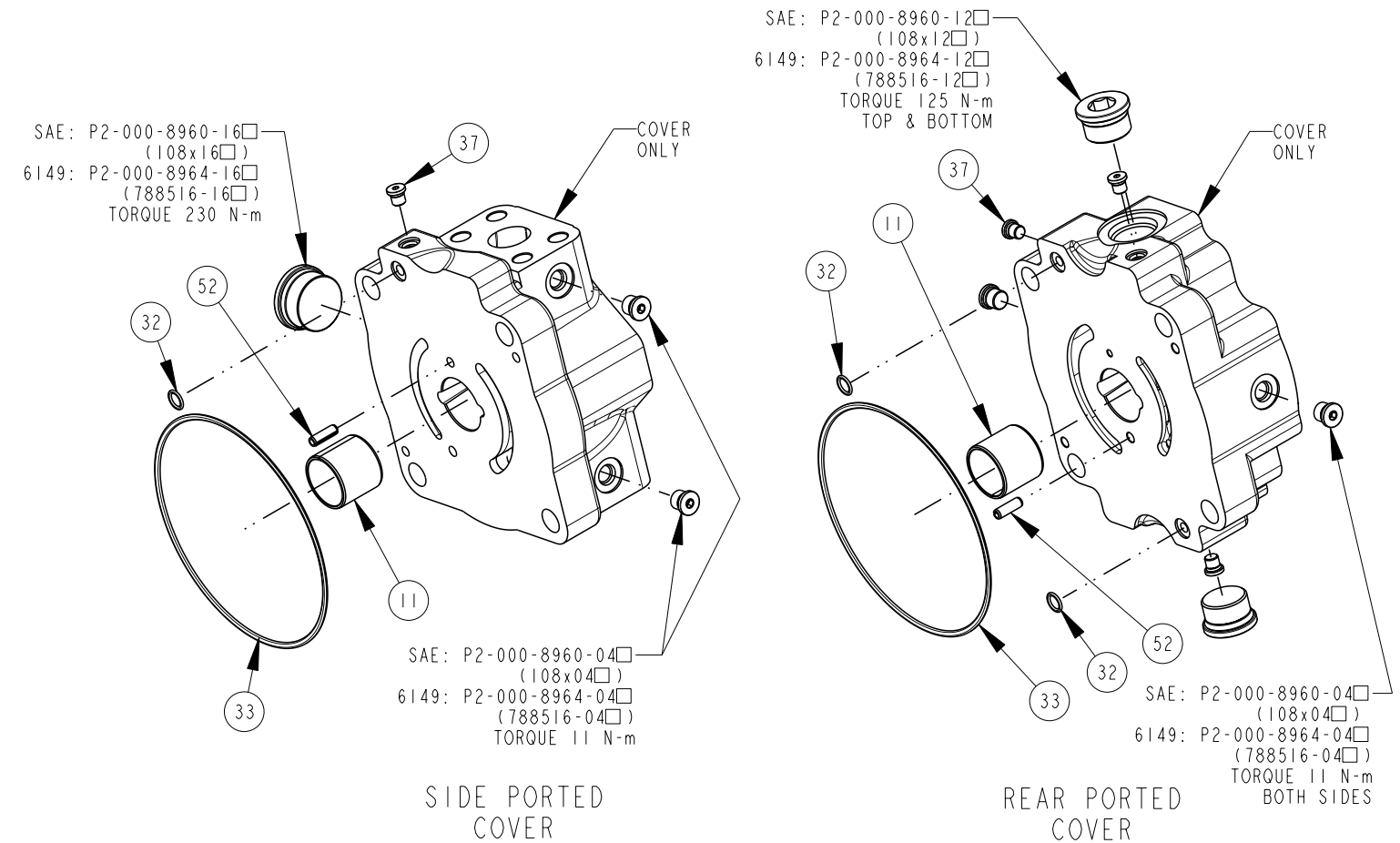


SHAFT ASSEMBLY INCLUDES, SHAFT, BEARING, AND SNAP RING

SHAFT ONLY	SHAFT ASSEMBLY	DESCRIPTION
P2-075-3512	P2-075-0225-35	C SPLINE
P2-075-3525	P2-075-0225-36	C SPLINE THRU
P2-075-3526	P2-075-0225-37	CC SPLINE
P2-075-3527	P2-075-0225-38	CC SPLINE THRU
P2-075-3532	P2-075-0225-45	C KEY
P2-075-3533	P2-075-0225-46	C KEY THRU
P2-075-3534	P2-075-0225-47	CC KEY
P2-075-3535	P2-075-0225-48	CC KEY THRU
P2-075-3542	P2-075-0225-55	C SPLINE NO UNDERCUT
P2-075-3520	P2-075-0225-56	C SPLINE THRU NO UNDERCUT
P2-075-3543	P2-075-0225-57	CC SPLINE NO UNDERCUT
P2-075-3544	P2-075-0225-58	CC SPLINE THRU NO UNDERCUT

DRAWN BY	DATE	CHANGED BY	DATE	ECN NUMBER
STREHLOW	29NOV04	J. LAMBERS	30MAY06	SEE SHEET 1

COVER ASSEMBLY KITS ITEM 55



COVER ONLY	COVER ASSY	DESCRIPTION
P2-075-1013-01	P2-075-0226-01□	SIDE PORTED, CCW, UNC
P2-075-1013-02	P2-075-0226-02□	SIDE PORTED, CCW, UNC, THRU
P2-075-1013-03	P2-075-0226-03□	SIDE PORTED, CCW, METRIC
P2-075-1013-04	P2-075-0226-04□	SIDE PORTED, CCW, METRIC, THRU
P2-075-1014-01	P2-075-0226-05□	SIDE PORTED, CW, UNC
P2-075-1014-02	P2-075-0226-06□	SIDE PORTED, CW, UNC, THRU
P2-075-1014-03	P2-075-0226-07□	SIDE PORTED, CW, METRIC
P2-075-1014-04	P2-075-0226-08□	SIDE PORTED, CW, METRIC, THRU
P2-075-1017-01	P2-075-0226-17□	REAR PORTED, CW, UNC
P2-075-1017-02	P2-075-0226-18□	REAR PORTED, CW, METRIC
P2-075-1017-01	P2-075-0226-19□	REAR PORTED, CCW, UNC
P2-075-1017-02	P2-075-0226-20□	REAR PORTED, CCW, METRIC

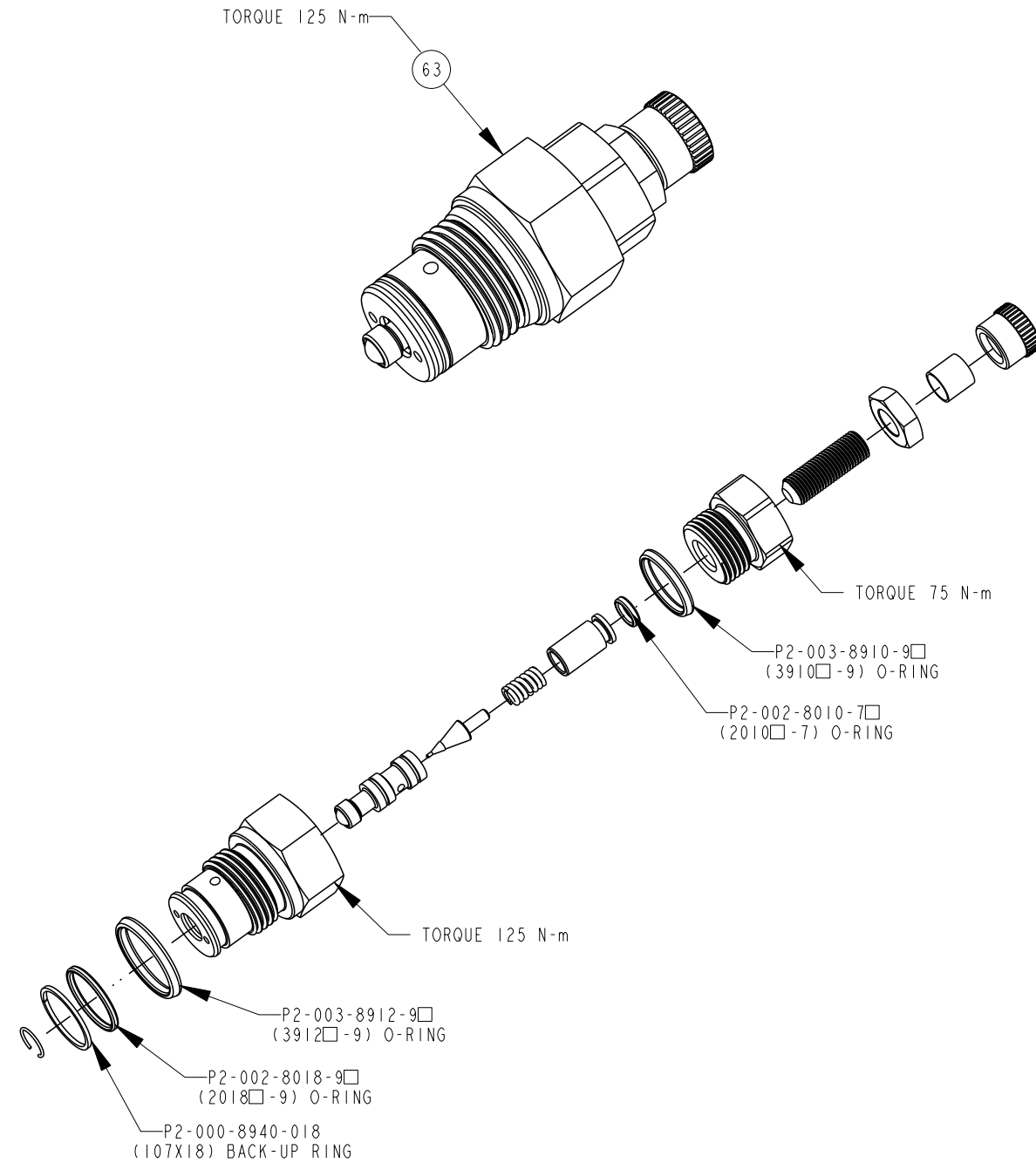
TITLE	DRAWING NUMBER	REVISION	STATUS	SHEET
SERVICE PARTS P2075 DESIGN SERIES 12	P2-075-0405	A	PR	6 OF 7

DRAWN BY	DATE	CHANGED BY	DATE	ECN NUMBER
STREHLOW	29NOV04	J. LAMBERS	30MAY06	SEE SHEET 1

TORQUE CONTROL CARTRIDGE

P2-000-0803 - ITEM 63

ASSEMBLY, DIS-ASSEMBLY AND REPAIR NOTES

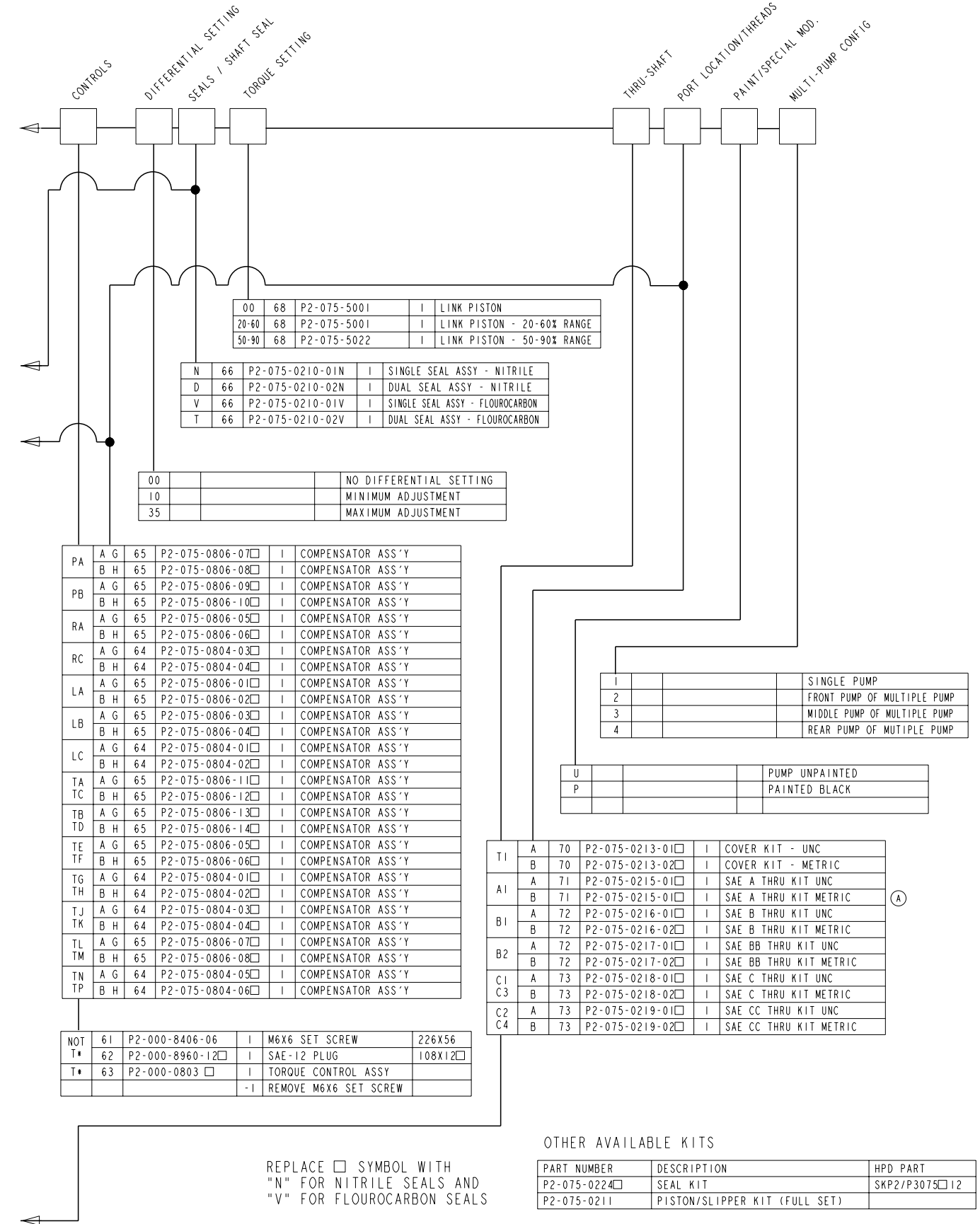
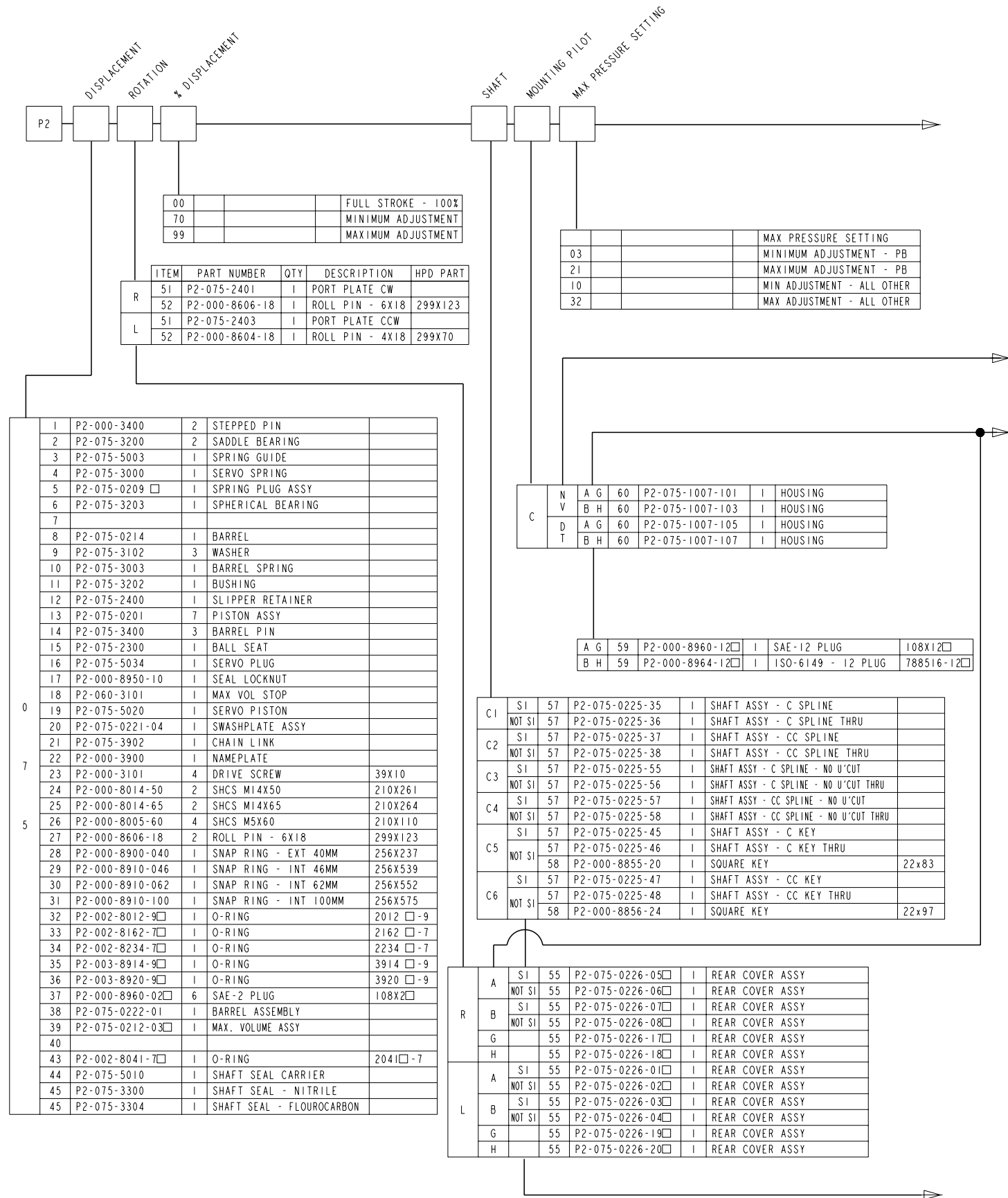


DISASSEMBLY STEPS FOR ENTIRE PUMP

1. REMOVE COVER SCREWS AND COVER
2. REMOVE ROTATING GROUP
3. REMOVE SHAFT SEAL CARRIER
4. REMOVE SHAFT
5. REMOVE BIAS SPRING PLUG, SPRING AND RETAINER
6. REMOVE MAX. VOLUME ASSY
7. REMOVE SERVO PISTON.
8. REMOVE SWASHPLATE ASSEMBLY

SHAFT SEAL REPLACEMENT

1. REMOVE SEAL CARRIER ONLY
2. REMOVE OLD SEAL
3. INSPECT SHAFT
4. IF SHAFT IS WORN INSTALL NEW SEAL IN INNER LOCATION FOR SINGLE SEAL APPLICATIONS (SEE SHEET 1). REPLACE SHAFT FOR DUAL SEAL APPLICATIONS



REPLACE SYMBOL WITH "N" FOR NITRILE SEALS AND "V" FOR FLOUROCARBON SEALS