

OFS350-OSC

Quick Reference Guide

The OFS350-OSC is a microstepping driver which contains an on-board oscillator controlled by two on-board potentiometers. It can be operated standalone without an external step and direction controller. A power supply and step motor are required in addition to the OFS350-OSC. These system elements are shown below.



OFS350-OSC
Open-Frame Stepper Drive



LV Step
Motor



STP-32PRK4
Power Supply

Getting Started:

A complete set of instructions, including wiring diagrams, specifications, and drawings, are contained in the Hardware Installation Guide, and are available online at www.parkermotion.com. Navigate to "Products" then "Stepper Drives and Motors" then to "OFS."

Required items before you begin:

OFS350-OSC

Control signals (may be pushbuttons, potentiometers, 0-5 VDC analog signal, PLC output, etc.)

Step motor, minimum 1mH inductance (LV series or equivalent)

Power supply, 12-42 VDC (STP-32PRK4 or equivalent)

Power supply, 5 VDC (STP-32PRK4 or equivalent)

Cabling:

AC input to power supply

DC output from power supply to step drive

Step motor extension to step drive (if required)

Small screwdriver

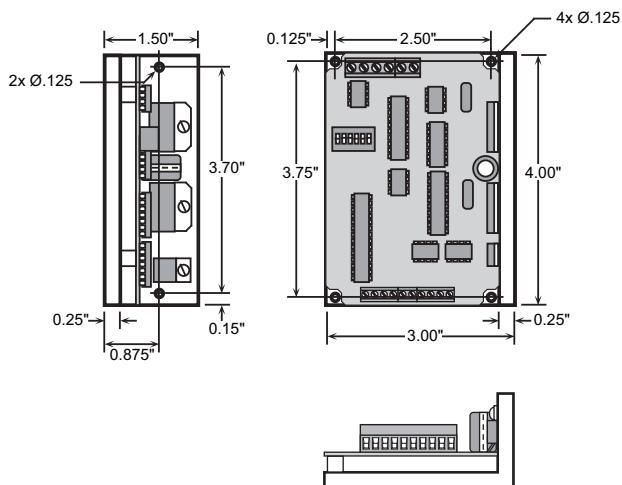
DO's for Using the OFS350-OSC:

- DO** download the Hardware Installation Guide and reference it for system installation and setup. (www.parkermotion.com)
- DO** mount the drive where there is adequate airflow to keep the surrounding ambient temperature less than 70°C.
- DO** ensure power is off to the drive prior to wiring the control signals or motor leads.
- DO** follow all applicable safety standards and requirements when installing the OFS system.

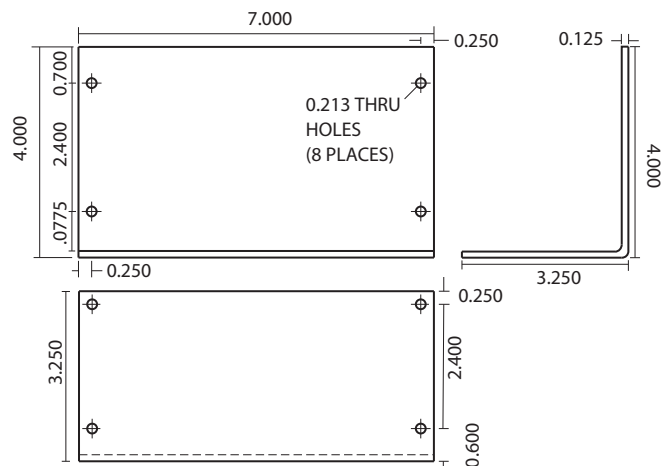
DON'Ts for Using the OFS350-OSC:

- DON'T** exceed the 42 VDC max. input voltage. If using an unregulated supply, check the unloaded voltage spec. Many unregulated supplies are rated at full load, and will exceed the listed voltage when unloaded.
- DON'T** reverse the polarity of the DC input. Damage to the drive will occur and void the warranty.
- DON'T** disconnect the motor leads while the drive is powered on.
- DON'T** touch any exposed terminal or surface on the drive while the drive is powered on.

OFS350-OSC Dimensions:



STP-32PRK4 Dimensions:



Electromechanical Division
Parker Hannifin Corporation
p/n 88-029808-01B
Effective: November 2008
www.parkermotion.com
emn_support@parker.com

www.comoso.com

ENGINEERING **YOUR** SUCCESS.