

**Specifications  
 for NSH20 Series**

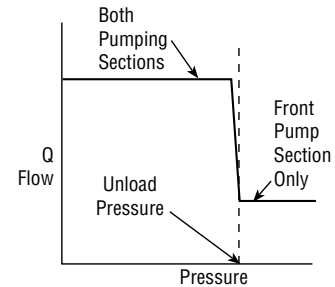
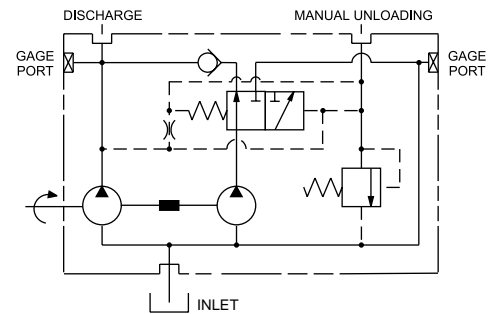
Description ..... Pressure-Sensitive Unloading Gear Pumps  
 Combined Flow Range ..... To 98 GPM Per Section (370.9 LTR)  
 Displacements ... To 9.10 C.I.R. Each Section (149.12 CC's/REV.)  
 Maximum Pressure to ..... 2500 PSI (172 BAR)  
 Maximum Speed to ..... 2500 RPM  
 Rotation ..... A or C  
 Bearings ..... Journal  
 Construction ..... Aluminum



**Tandem Pump with Pressure-Sensitive Unloading Valve**

The NSH pump system uses an unloading valve to divert the flow from one section of a tandem pump. The system is designed to limit the hydraulic horsepower, and thus limit the horsepower taken from the prime mover. Flow is supplied from both pumping sections at low, working pressure and from only the front pumping section at high pressure. As the system pressure increases to a predetermined value, a pilot relief valve opens, causing the main spool to divert the rear pumping section to the common inlet port, while the front pumping section continues to supply fluid to the system.

When the system pressure decreases to the predetermined value for which it was set, the relief valve closes, causing the main spool to divert the unloaded flow of the rear pumping section back into the system. The rear section can be manually unloaded at any time, regardless of system pressure, by venting the manual unload pilot port.



**Performance Data Per Section**

Pump Model	Section Size	Displacement/Revolution (Theoretical)					Maximum Pressure		Maximum Speed RPM
		US Gallons	Cubic Inches	Liters	Cubic Centimeters	Imperial Gallons	PSI	BAR	
NSH20	150	.0131	3.02	.0496	49.849	.0108	2500	172	2500
NSH20	200	.0175	4.04	.0662	66.204	.0146	2500	172	2500
NSH20	250	.0219	5.06	.0829	82.919	.0182	2500	172	2500
NSH20	300	.0262	6.05	.0992	99.142	.0218	2500	172	2500
NSH20	350	.0306	7.07	.1158	115.857	.0255	2500	172	2500
NSH20	400	.0350	8.08	.1325	132.408	.0292	2500	172	2500
NSH20	450	.0394	9.10	.1491	149.123	.0328	2500	172	2500

All data based on SAE 10W oil at 150°F. Available with Viton® Seals.



**CAUTION:** "Inlet vacuum" should not exceed 5" Hg at normal operating speed and temperature. Operation of pumps in excess of 5" Hg requires factory approval.

**Dimensional Data**

MOUNTING DIMENSIONS								
FRONT SECTION SIZE	REAR SECTION SIZE	CONN. SIZE	DISCHARGE FRONT SECTION HOLE DIA.	MOUNTING DIMENSIONS			SHIPPING WEIGHTS	
				A	B	C	lbs.	kgs.
20150	—150	1"	23.6 (.93)	91.4 (3.60)	179.5 (7.07)	322.0 (12.68)	56	20.9
	—200	1"	23.6 (.93)	91.4 (3.60)	179.5 (7.07)	343.9 (13.54)	57	21.3
	—250	1"	23.6 (.93)	91.4 (3.60)	179.5 (7.07)	353.8 (13.93)	58	21.7
	—300	1"	23.6 (.93)	91.4 (3.60)	179.5 (7.07)	361.1 (14.22)	60	22.4
	—350	1"	23.6 (.93)	91.4 (3.60)	179.5 (7.07)	351.2 (13.83)	62	23.1
	—400	1"	23.6 (.93)	91.4 (3.60)	179.5 (7.07)	358.3 (14.11)	64	23.9
	—450	1"	23.6 (.93)	91.4 (3.60)	179.5 (7.07)	365.7 (14.40)	66	24.6
20200	—150	1-1/2"	30.2 (1.19)	95.2 (3.75)	202.4 (7.97)	344.9 (13.58)	58	21.7
	—200	1-1/2"	30.2 (1.19)	95.2 (3.75)	202.4 (7.97)	366.7 (14.44)	59	22.0
	—250	1-1/2"	30.2 (1.19)	95.2 (3.75)	202.4 (7.97)	376.3 (14.83)	60	22.4
	—300	1-1/2"	30.2 (1.19)	95.2 (3.75)	202.4 (7.97)	383.7 (15.11)	62	23.1
	—350	1-1/2"	30.2 (1.19)	95.2 (3.75)	202.4 (7.97)	373.8 (14.72)	64	23.9
	—400	1-1/2"	30.2 (1.19)	95.2 (3.75)	202.4 (7.97)	381.0 (15.00)	66	24.6
	—450	1-1/2"	30.2 (1.19)	95.2 (3.75)	202.4 (7.97)	388.3 (15.29)	68	25.4
20250	—150	1-1/2"	30.2 (1.19)	101.6 (4.00)	209.5 (8.25)	352.0 (13.86)	59	21.7
	—200	1-1/2"	30.2 (1.19)	101.6 (4.00)	209.5 (8.25)	373.6 (14.71)	60	22.4
	—250	1-1/2"	30.2 (1.19)	101.6 (4.00)	209.5 (8.25)	383.7 (15.11)	62	23.1
	—300	1-1/2"	30.2 (1.19)	101.6 (4.00)	209.5 (8.25)	390.9 (15.39)	64	23.9
	—350	1-1/2"	30.2 (1.19)	101.6 (4.00)	209.5 (8.25)	381.0 (15.00)	66	24.6
	—400	1-1/2"	30.2 (1.19)	101.6 (4.00)	209.5 (8.25)	388.1 (15.28)	68	25.4
	—450	1-1/2"	30.2 (1.19)	101.6 (4.00)	209.5 (8.25)	395.4 (15.57)	70	26.1
20300	—150	1-1/2"	30.2 (1.19)	105.1 (4.14)	216.9 (8.54)	359.4 (14.15)	60	22.4
	—200	1-1/2"	30.2 (1.19)	105.1 (4.14)	216.9 (8.54)	381.0 (15.00)	64	23.9
	—250	1-1/2"	30.2 (1.19)	105.1 (4.14)	216.9 (8.54)	391.1 (15.40)	66	24.6
	—300	1-1/2"	30.2 (1.19)	105.1 (4.14)	216.9 (8.54)	398.2 (15.68)	68	25.4
	—350	1-1/2"	30.2 (1.19)	105.1 (4.14)	216.9 (8.54)	388.3 (15.29)	70	26.1
	—400	1-1/2"	30.2 (1.19)	105.1 (4.14)	216.9 (8.54)	395.4 (15.57)	72	26.9
	—450	1-1/2"	30.2 (1.19)	105.1 (4.14)	216.9 (8.54)	402.8 (15.86)	74	27.6
20350	—150	1-1/2"	30.2 (1.19)	110.4 (4.35)	224.0 (8.82)	366.5 (14.43)	62	23.1
	—200	1-1/2"	30.2 (1.19)	110.4 (4.35)	224.0 (8.82)	388.1 (15.28)	64	23.9
	—250	1-1/2"	30.2 (1.19)	110.4 (4.35)	224.0 (8.82)	398.2 (15.68)	66	24.6
	—300	1-1/2"	30.2 (1.19)	110.4 (4.35)	224.0 (8.82)	405.3 (15.96)	70	26.1
	—350	1-1/2"	30.2 (1.19)	110.4 (4.35)	224.0 (8.82)	395.4 (15.57)	72	26.9
	—400	1-1/2"	30.2 (1.19)	110.4 (4.35)	224.0 (8.82)	402.5 (15.85)	74	27.6
	—450	1-1/2"	30.2 (1.19)	110.4 (4.35)	224.0 (8.82)	409.9 (16.14)	76	28.4
20400	—150	1-1/2"	34.7 (1.37)	110.4 (4.35)	231.1 (9.10)	373.6 (14.71)	64	23.9
	—200	1-1/2"	34.7 (1.37)	110.4 (4.35)	231.1 (9.10)	395.2 (15.56)	66	24.6
	—250	1-1/2"	34.7 (1.37)	110.4 (4.35)	231.1 (9.10)	405.3 (15.96)	68	25.4
	—300	1-1/2"	34.7 (1.37)	110.4 (4.35)	231.1 (9.10)	412.4 (16.24)	70	26.1
	—350	1-1/2"	34.7 (1.37)	110.4 (4.35)	231.1 (9.10)	402.5 (15.85)	72	26.9
	—400	1-1/2"	34.7 (1.37)	110.4 (4.35)	231.1 (9.10)	409.7 (16.13)	76	28.4
	—450	1-1/2"	34.7 (1.37)	110.4 (4.35)	231.1 (9.10)	417.016.42 ( )	78	29.1
20450	—150	1-1/2"	34.7 (1.37)	118.3 (4.66)	238.5 (9.39)	381.0 (15.00)	66	24.6
	—200	1-1/2"	34.7 (1.37)	118.3 (4.66)	238.5 (9.39)	402.5 (15.85)	68	25.4
	—250	1-1/2"	34.7 (1.37)	118.3 (4.66)	238.5 (9.39)	412.7 (16.25)	70	26.1
	—300	1-1/2"	34.7 (1.37)	118.3 (4.66)	238.5 (9.39)	419.8 (16.53)	74	27.6
	—350	1-1/2"	34.7 (1.37)	118.3 (4.66)	238.5 (9.39)	409.9 (16.14)	76	28.4
	—400	1-1/2"	34.7 (1.37)	118.3 (4.66)	238.5 (9.39)	417.0 (16.42)	78	29.1
	—450	1-1/2"	34.7 (1.37)	118.3 (4.66)	238.5 (9.39)	424.4 (16.71)	80	29.9

SAE 4-BOLT CONNECTOR PORTS					
Size	F	G	H	J	K
1"	12.9 (.51)	26.1 (1.03)	26.1 (1.03)	52.3 (2.06)	3/8-16NC
1-1/2"	17.7 (.70)	35.5 (1.40)	34.7 (1.37)	69.8 (2.75)	1/2-13NC
2-1/2"	25.4 (1.00)	50.8 (2.00)	44.4 (1.75)	88.9 (3.50)	1/2-13NC



**Dimensional Data**

Inch equivalents for millimeter dimensions are shown in (\*\*).

