

Application

All profiles.

Technical Data

Steel, Zinc Plated

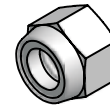
Nuts

Ordering Information

Description	Unit	Weight	Part #
M3 Hex Nut	Each	0.3 g	24-706-3
M4 Hex Nut	Each	0.5 g	24-706-4
M5 Hex Nut	Each	1 g	24-706-5
M6 Hex Nut	Each	2.5 g	24-706-6
M8 Hex Nut	Each	5 g	24-706-8
M10 Hex Nut	Each	11.6 g	24-706-10
M12 Hex Nut	Each	17.3 g	24-706-12
M14 Hex Nut	Each	25 g	24-706-14
M16 Hex Nut	Each	33 g	24-706-16
M6 Lock Nut	Each	3 g	24-716-6
M8 Lock Nut	Each	5 g	24-716-8
1/4-20 Hex Nut	Each	4.5 g	25-706-4
5/16-18 Hex Nut	Each	4.5 g	25-706-5
5/16-18 Lock Nut	Each	4.5 g	25-716-5
5/16-18 Flanged Serrated Nut	Each	4.5 g	25-726-5



Hex Nut



Lock Nut



Flanged
Serrated Nut

Application

All profiles.

Technical Data

Steel, Zinc Plated

Ordering Information

Description	Unit	Weight	Part #
M4 Flat Washer	Each	0.1 g	24-700-4
M5 Flat Washer	Each	0.3 g	24-700-5
M6 Flat Washer	Each	0.4 g	24-700-6
M8 Flat Washer	Each	1 g	24-700-8
M6 Lock Washer	Each	6 g	24-707-6
M8 Lock Washer	Each	9 g	24-707-8
M10 Lock Washer	Each	11 g	24-707-10
M8 Rib Spring Washer	Each	6 g	24-718-8
M8 Safety Spring Washer	Each	6 g	24-709-8
M8 Spring Washer	Each	3 g	24-708-8
M10 Spring Washer	Each	6 g	24-708-10
0' size M8/Flat Washer	Each	6 g	24-701-8
5/8" OD M6 Flat Washer	Each	2 g	24-711-6
#10-32 Flat Washer	Each	2.8 g	25-700-2
1/4" Flat Washer	Each	2.8 g	25-700-4
5/16" Flat Washer	Each	2.8 g	25-700-5
3/8" Flat Washer	Each	2.8 g	25-700-6
5/16" Lock Washer	Each	2.8 g	25-707-5



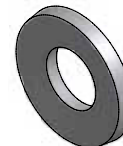
Flat Washer



Lock Washer



Rib Spring Washer



Safety Spring Washer



Spring Washer



0' size M8/Flat Washer

