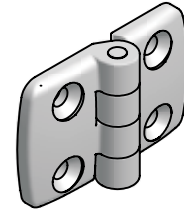
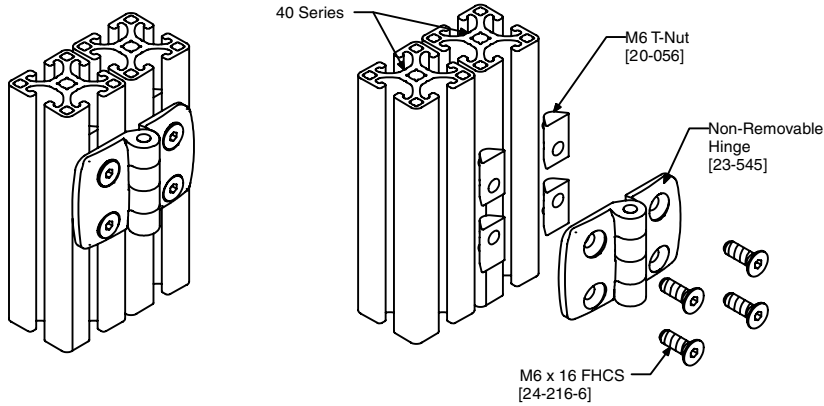


# Medium Duty Plastic (Metric)



**NON-REMOVABLE**

### Application

High quality plastic hinges for constructing medium duty guard/ enclosure doors. Hinges are offered in two types: lift off (for left and right hand doors) and non-removable.

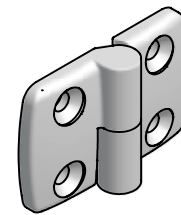
### Technical Data

Glass-filled Nylon, Black  
Stainless Steel Pin  
Max Torque: 100Nm (74 ft-lbs)

### Ordering Information

Dimensions (mm)

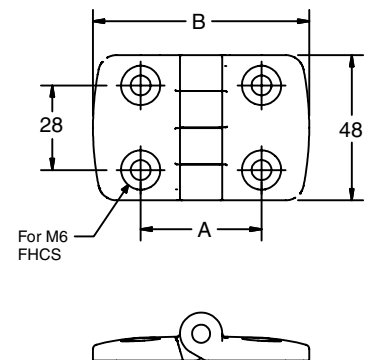
A	B	Hinge Type	Weight (g)	Part #
45	77	Non Removable	43	<b>23-545</b>
		Left Side Mount	43	<b>23-545L</b>
		Right Side Mount	41	<b>23-545R</b>
35	59	Non Removable	35	<b>23-535</b>
		Left Side Mount	35	<b>23-535L</b>
		Right Side Mount	33	<b>23-535R</b>
30	49	Non Removable	28	<b>23-550</b>
		Left Side Mount	28	<b>23-550L</b>
		Right Side Mount	28	<b>23-550R</b>



**LIFT OFF**

### Application Chart

Mounting Surface 1	Mounting Surface 2	Gap (mm)	Non-Rem Hinge	Left Hinge	Right Hinge
40 Series	40 Series	5	23-545	23-545L	23-545R
40 Series	Panel	—			
28 Series	40 Series	1	23-535	23-535L	23-535R
30 Series	40 Series	0			
28, 40 Series	Panel	—	23-550	23-550L	23-550R
30 Series	30 Series	0			
30, 28 Series	Panel	—			
30 Series	30 Series	5			
28 Series	28 Series	7			

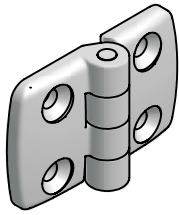


### Recommended Hardware

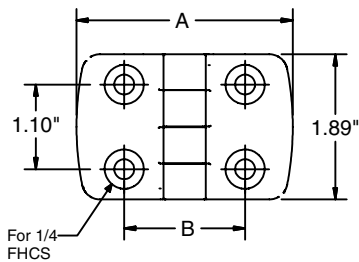
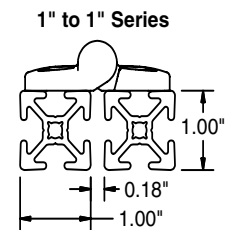
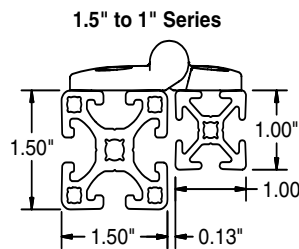
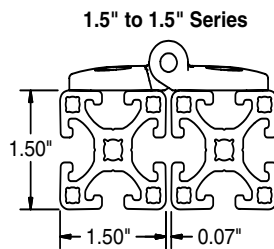
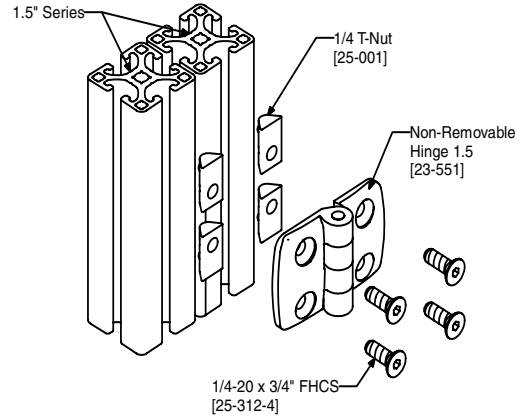
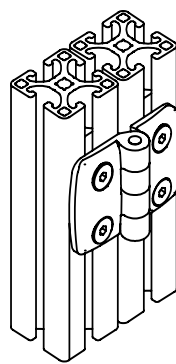
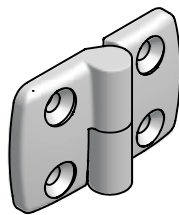
Series	Screw	T-Nut	Panel	Screw	T-Nut
28	24-214-6	20-055	—	—	—
30	24-214-6	20-056	6mm Panel	24-220-6	24-716-6
40	24-216-6	20-056	8mm Panel	24-220-6	24-716-6



# Medium Duty Plastic (Inch)



## NON-REMOVABLE



### Application

High quality plastic hinges for constructing medium duty guard/ enclosure doors. Hinges are offered in two types: lift off (for left and right hand doors) and non-removable.

### Technical Data

Glass-filled Nylon, Black  
Stainless Steel Pin  
Max Torque: 100Nm (74 ft-lbs)

### Recommended Fastening Hardware (Order Separately)

Series	Screws	T-Nuts
1.5"	25-212-4	25-001, 20-083 or 20-193
1"	25-208-4	25-031, 25-034 or 25-036

### Ordering Information

A	B	Hinge Type	Weight (g)	Part #
2.74"	1.57"	Non Removable, 1.5" to 1.5"	43	<b>23-551</b>
		Left Side Mount, 1.5" to 1.5"	43	<b>23-551L</b>
		Right Side Mount, 1.5" to 1.5"	41	<b>23-551R</b>
2.28"	1.38"	Non Removable, 1.5" to 1"	35	<b>23-552</b>
1.93"	1.18"	Non Removable, 1" to 1"	28	<b>23-550</b>
		Left Side Mount, 1" to 1"	28	<b>23-550L</b>
		Right Side Mount, 1" to 1"	28	<b>23-550R</b>