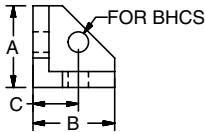
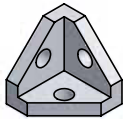


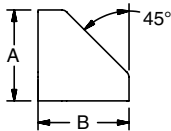
Corner Bracket



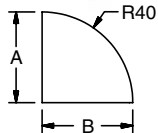
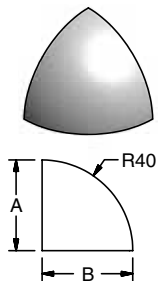
22-146
22-153



22-150

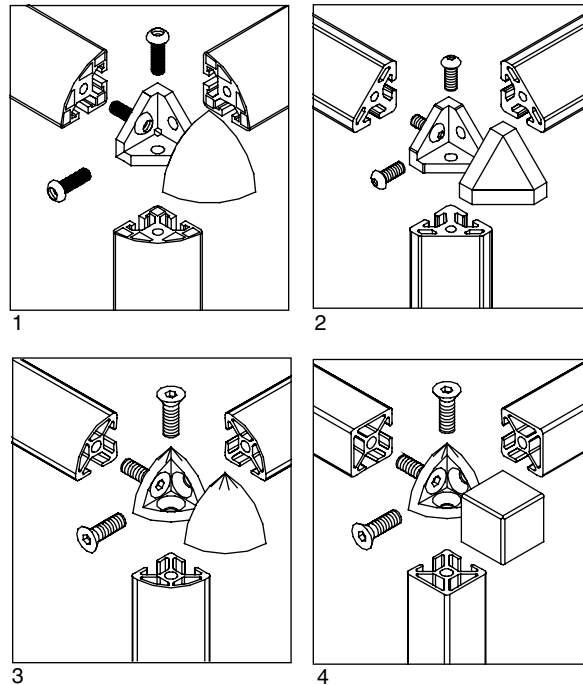


18-822



18-821
22-151
22-154

18-842
22-152



Application

Corner brackets are used for connecting 40,30 and 1.5" Series profiles at right angles. Ideal for construction of display cases, tables, cover hoods or anywhere a protected corner is desired. Caps are designed to match the contour of the profile.

Technical Data

Bracket: Die Cast Zinc
 End Cap: Glass-filled Nylon, Black
 Profile ends must be tapped for M8 (5/16-18) screws (included with set).

Ordering Information

Series	Description	A	B	C	Unit	Wt.	Part #
40	Corner Bracket	36	36	20	Set	120 g	22-146
	Radius Connector Cap	40	40	—	Each	8 g	18-821
	3x45° Connector Cap	40	40	—	Each	9 g	18-822
	Square Connector Cap	40	40	—	Each	15 g	18-842
30	Corner Bracket	28	28	15	Set	69 g	22-150
	Radius Connector Cap	30	30	—	Each	4 g	22-151
	Square Connector Cap	30	30	—	Each	7 g	22-152
1.5"	Corner Bracket	1.5"	1.5"	0.75"	Set	120g	22-153
	Radius Connector Cap	1.5"	1.5"	—	Each	8 g	22-154

* For Machining M8 Tap use part number 19-010 for each profile end

