

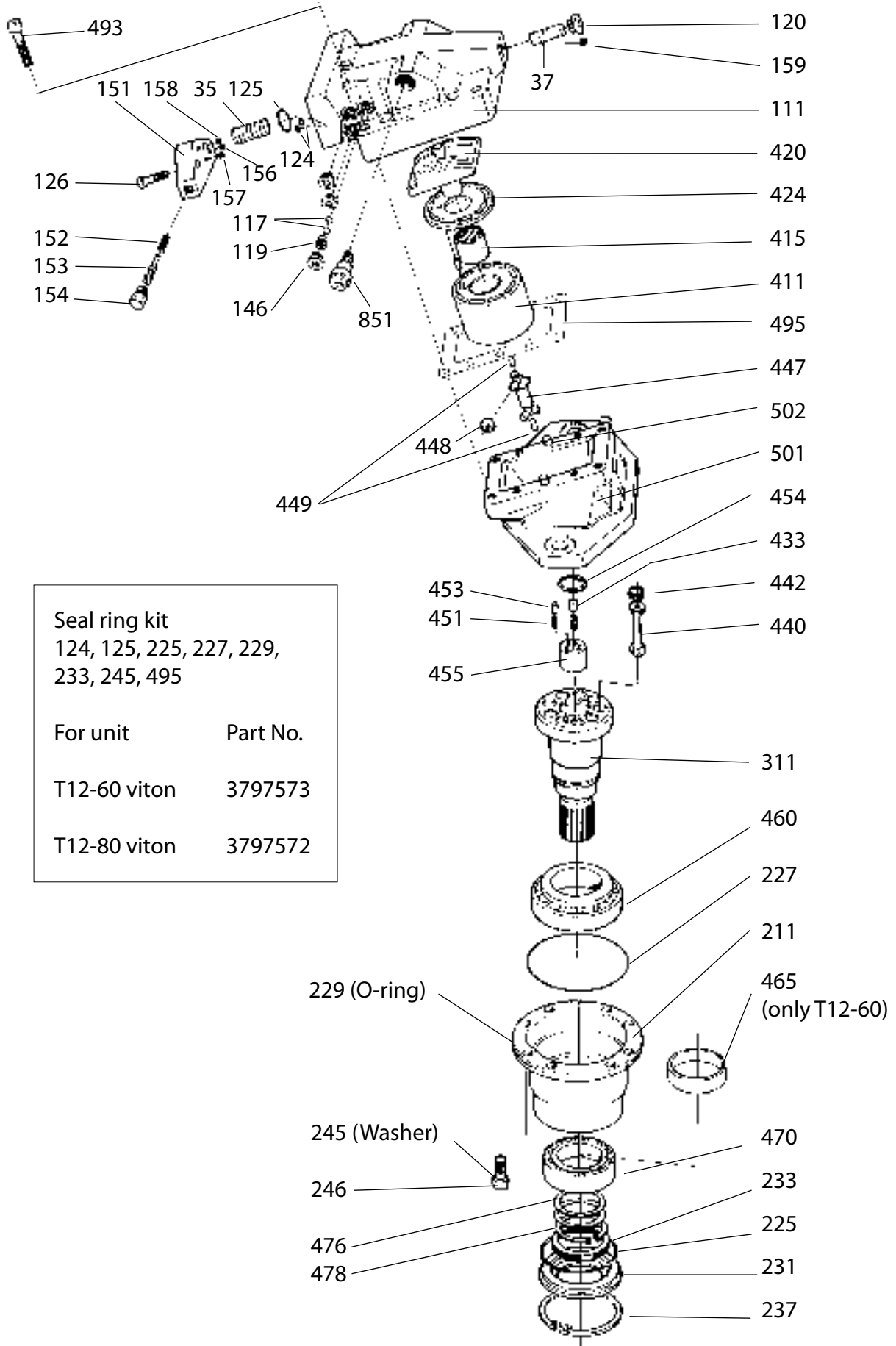


Bulletin HY30-5515-M1/UK/SE

Spare Parts Series T12

Effective: January, 2009
Supersedes: February, 2006





T12-060

Item	Part No.	Description	Benämning	Qty.	Remarks
35		SETTING PISTON	STÄLLKOLV	1	
37		SETTING PISTON	STÄLLKOLV	1	
111	3795589	END CAP ISO	ANSL.BL.ISO	1	
117	118080	BALL	KULA	2	
119	3795323	VALVE SEAT	VENTILSÄTE	1	
124	3796235	O-RING	O-RING	2	Viton
125	3793701	O-RING	O-RING	1	Viton
126	974109	HEX S SCR	INS SKRUV	2	
146	3793532	HEX SOCK. PL.ASSY	INSEXPLOPP KPL	1	
151	3780956	CONTROL COVER	REGULATORLOCK	1	Repl. 3795538
152	3794993	COMPRESSION SPRING	TRYCKFJÄDER	1	
153	3795000	VALVE SPOOL	VENTILSLID	1	
154	3795756	COUPLING RIM VITO	KOPPLING RIM VITO	1	
157	3704588	NOZZLE	MUNSTYCKE	1	
158	3704588	NOZZLE	MUNSTYCKE	1	
211	3792297	BEARING HOUSING	LAGERHUS TYP C	1	
225	948981	O-RING	O-RING	1	Viton
227	3796541	O-RING	O-RING	1	Viton
229	976641	O-RING	O-RING	1	Viton
231	3791510	SEAL CARRIER	TÄTRINGSHÅLLARE	1	
233	3793419	SHAFT SEAL	TÄTNINGSRING	1	Viton
237	914548	RETAINING RING	SPÄRRING	1	
245	947083	SEAL WASHER	TÄTBRICKA	8	
246	3794766	HEX S SCR	INS SKRUV	8	
311	3793747	SHAFT TYPE C	AXEL TYP C	1	
411	3791753	CYLINDER BARREL ASSY	CYLINDERTRUMMA KPL	1	Replaces 3791752
415	184777	NEEDLE BEARING	NÄLBUSSNING	1	Included in cylinder barrel
420	3795652	VALVE SEGMENT ASSY	VENTILSEGMENT KPL	1	
424	3793065	SLIDING PLATE	GLIDPLATTA	1	
433	3792348	COMPRESSION SPRING	TRYCKFJÄDER	1	
440	3793583	PISTON ASSY	KOLV KPL	9	
442	3792345	PISTON RING	LAMELLRING	27	Not available see SI 08/02
447	3782238	JOINT SHAFT	SYNKRONISERINGSAXEL	1	Repl. 3791518
448	3707534	JOINT ROLLER	RULLE	6	
449	3791502	SUPPORT PIN	STÖDPINNE	2	
451	3788147	SPRING PIN KIT	SPÄNNSTIFTSSATS	3+3	Replaces 3787593 & 3787591 Available in 3788147
453					
454	3792411	RETAINING RING	SPÄRRING	1	
455	3791513	JOINT COUPLING	MEDBRINGARE	1	
460	184687	TAP ROL BEARING	KON RULLAGER	1	
465	3791763	SPACER SLEEVE	DISTANSHYLSA	1	
470	184760	CYL BEARING	CYL LAGER	1	
476	974190	SPACER WASHER 0,5	DISTANSBRICKA 0,5	1	
476	974191	SPACER WASHER 1,0	DISTANSBRICKA 1,0	1	
476	977614	SPACER WASHER 0,6	DISTANSBRICKA 0,6	1	
476	977615	SPACER WASHER 0,8	DISTANSBRICKA 0,8	1	
478	914472	RETAINING RING	SPÄRRING	1	
493	974110	HEX S SC	INS SKRUV	8	
495	3791772	GASKET	PACKNING	1	
501	3793445	INTERMEDIATE HOUSING	MELLANHUS TYP C	1	

T12-080

Item	Part No.	Description	Benämning	Qty.	Remarks
	35	STÄLLKOLV	SETT PISTON	1	
	37	STÄLLKOLV	SETT PISTON	1	
	111	3795298 ANSL.BL.ISO	END CAP ISO	1	
	113	3795603 FÖRSEGLINGSPROPP	SEAL PLUG	2	
	117	118080 KULA	BALL	2	
	119	3795323 VENTILSÄTE	VALVE SEAT	1	
	120	3793606 INSEXPROPP KPL	HEX SOCK. PL.ASSY	1	
	124	3796235 O-RING	O-RING	1	Viton
	125	3793701 O-RING	O-RING	1	Viton
	126	974109 INS SKRUV	HEX S SCR	2	
	146	3791725 INSEXPROPP KPL	HEX SOCKET PLUG ASSY	1	
	151	3780956 REGULATORLOCK	CONTROL COVER	1	Repl. 3795538
	152	3794993 TRYCKFJÄDER	COMPRESSION SPRING	1	
	153	3795000 VENTILSLID	VALVE SPOOL	1	
	154	3795328 KOPPLING RIM	COUPLING RIM	1	
	157	3704588 MUNSTYCKE	NOZZLE	1	
	158	3704588 MUNSTYCKE	NOZZLE	1	
	211	3792279 LAGERHUS TYP C	BEARING HOUSING	1	
	225	948981 O-RING	O-RING	1	Viton
	227	949736 O-RING	O-RING	1	Viton
	229	976642 O-RING	O-RING	1	Viton
	231	3791510 TÄTRINGSHÅLLARE	SEAL CARRIER	1	
	233	3793419 TÄTNINGSRING	SHAFT SEAL	1	Viton
	237	914548 SPÄRRING	RETAINING RING	1	
	245	947083 TÄTBRICKA	SEAL WASHER	8	
	246	949067 INS SKRUV	HEX S SCR	8	
	311	3794779 AXEL TYP C	SHAFT TYPE C	1	
	411	3792936 CYLINDERTRUMMA	CYLINDER BARREL	1	Repl. 3709968
	415	184093 NÅLBUSSNING	NEEDLE BEARING	1	Included in cylinder barrel
	420	3795486 VENTILSEGMENT KPL	VALVE SEGMENT ASSY	1	
	424	3792896 GLIDPLATTA	SLIDING PLATE	1	
	433	3792348 TRYCKFJÄDER	COMPRESSION SPRING	1	
	440	3793306 KOLV KPL	PISTON ASSY	9	
	442	3791607 LAMELLRING	PISTON RING	27	Not available see SI 08/02
	447	3782238 SYNKRONISERINGSAXEL	JOINT SHAFT	1	Repl. 3791518
	448	3707534 RULLE	JOINT ROLLER	6	
	449	3791502 STÖDPINNE	SUPPORT PIN	2	
	451	3788147 SPÄNNSTIFTSSATS	SPRING PIN KIT	3+3	Replaces 3787593 & 3787591 Available in 3788147
	453				
	454	3792411 SPÄRRING	RETAINING RING	1	
	455	3791513 MEDBRINGARE	JOINT COUPLING	1	
	460	184660 KON RULLAGER	TAP ROL BEARING	1	
	470	184760 CYL LAGER	CYL BEARING	1	
	476	974190 DISTANSBRICKA 0,5	SPACER WASHER 0,5	1	
	476	974191 DISTANSBRICKA 1,0	SPACER WASHER 1,0	1	
	476	977614 DISTANSBRICKA 0,6	SPACER WASHER 0,6	1	
	476	977615 DISTANSBRICKA 0,8	SPACER WASHER 0,8	1	
	478	914472 SPÄRRING	RETAINING RING	1	
	493	973198 INS SKRUV	HEX S SCR	8	
	495	3709997 PACKNING	GASKET	1	
	501	3792910 MELLANHUS TYP C	INTERMEDIATE HOUSING	1	
	502	950588 PINNE	PIN	2	
	510	3793606 INSEXPROPP KPL	HEX SOCK. PL.ASSY	1	



Parker Hannifin
Pump and Motor Division
Flygmotorvägen 2
SE-461 82 Trollhättan
Sweden
Tel: +46 (0)520 40 45 00
Fax: +46 (0)520 371 05
www.parker.com