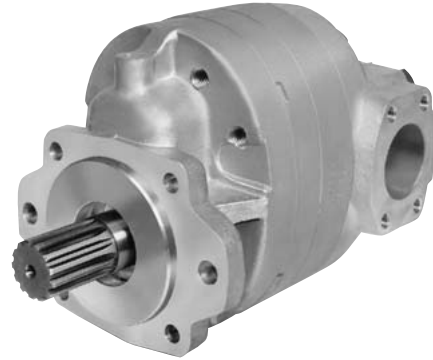


**Specifications
 for HP7-THP7 Series**

Description..... Gear Pumps
 Flow Range To 116 GPM Per Section (440.01 LTR.)
 Displacements To 10.74 C.I.R. Per Section (176.00 CC's/REV.)
 Maximum Pressure to 4000 PSI (276 BAR)
 Maximum Speed to 2500 RPM
 Rotation A or C
 Bearings..... Journal
 Construction Aluminum



Performance Data Per Section

Pump Model	Section Size	Displacement/Revolution (Theoretical)					Maximum Pressure		Maximum Speed
		US Gallons	Cubic Inches	Liters	Cubic Centimeters	Imperial Gallons	PSI	BAR	RPM
HP7	250	.0219	5.06	.0829	82.919	.0182	4000	276	2500
HP7	300	.0262	6.05	.0991	99.142	.0218	4000	276	2500
HP7	350	.0306	7.07	.1159	115.857	.0255	4000	276	2500
HP7	400	.0339	7.83	.1283	128.311	.0282	4000	276	2500
HP7	450	.0379	8.75	.1434	143.387	.0316	3700	255	2500
HP7	500	.0422	9.75	.1598	159.774	.0351	3300	228	2500
HP7	550	.0465	10.74	.1760	175.997	.0387	3000	207	2500

All data based on SAE 10W oil at 150°F. Available with Viton® seals



CAUTION: "Inlet vacuum" should not exceed 5" Hg at normal operating speed and temperature. Operation of pumps in excess of 5" Hg requires factory approval.

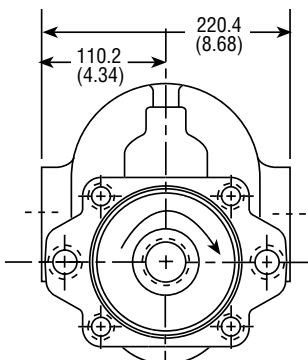
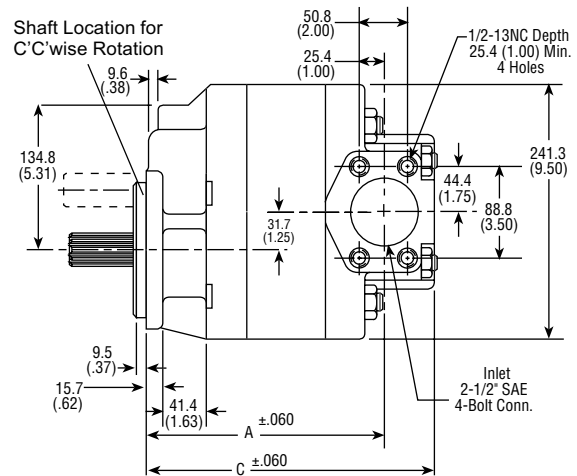
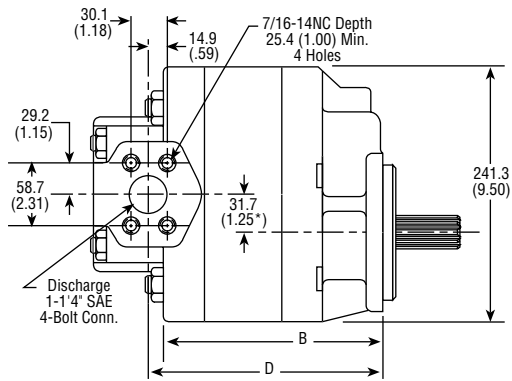
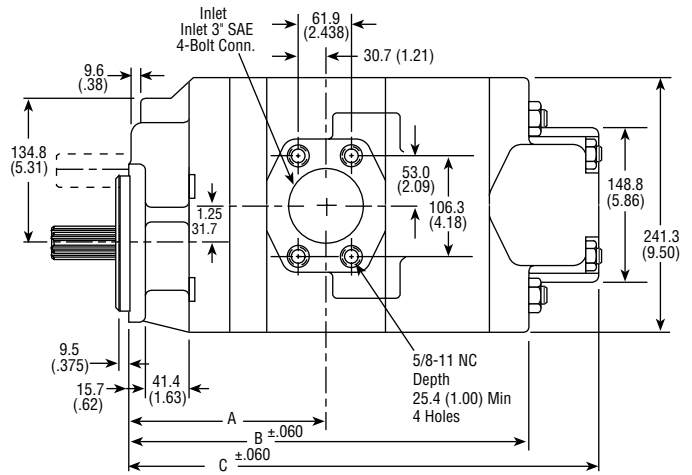
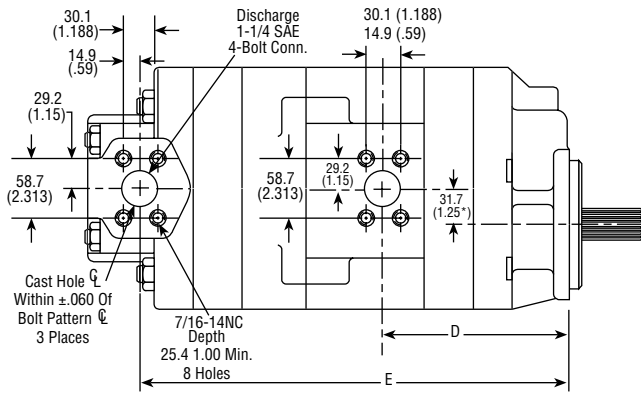
Dimensional Data

Mounting Dimensions				
Size	A	B	C	D
HP7-250 A & C	184.4 (7.26)	197.1 (7.76)	249.4 (9.82)	197.1 (7.76)
HP7-300 A & C	190.2 (7.49)	202.9 (7.99)	255.2 (10.05)	202.9 (7.99)
HP7-350 A & C	195.8 (7.71)	208.5 (8.21)	260.8 (10.27)	208.5 (8.21)
HP7-400 A & C	200.4 (7.89)	213.1 (8.39)	265.4 (10.45)	213.1 (8.39)
HP7-450 A & C	205.7 (8.10)	218.4 (8.60)	270.7 (10.66)	218.4 (8.60)
HP7-500 A & C	211.3 (8.32)	224.0 (8.82)	276.3 (10.88)	224.0 (8.82)
HP7-550 A & C	216.9 (8.54)	229.6 (9.04)	281.9 (11.10)	229.6 (9.04)

Dimensional Data

Inch equivalents for millimeter dimensions are shown in (**).

SAE 4-Bolt connectors are available. See Accessory Section only



SHOWN FOR CLOCKWISE ROTATION

Dimensional Data

SAE 4-Bolt Connector Ports					
Combinations Avail.	A	B	C	D	E
THP7-250 - 250 A & C	206.7 (8.14)	432.3 (17.02)	497.3 (19.58)	187.4 (7.38)	445.0 (17.52)
THP7-300 - 250 A & C	212.3 (8.36)	437.8 (17.24)	502.9 (19.80)	193.0 (7.60)	450.5 (17.74)
THP7-300 - 300 A & C	212.3 (8.36)	443.4 (17.46)	508.5 (20.02)	193.0 (7.60)	456.1 (17.96)
THP7-350 - 250 A & C	212.3 (8.58)	443.4 (17.46)	508.5 (20.02)	198.6 (7.82)	456.1 (17.96)
THP7-350 - 300 A & C	212.3 (8.58)	449.0 (17.68)	514.0 (20.24)	198.6 (7.82)	461.7 (18.18)
THP7-350 - 350 A & C	121.3 (8.58)	454.6 (17.90)	519.6 (20.46)	198.6 (7.82)	467.3 (18.40)
THP7-400 - 250 A & C	222.5 (8.76)	448.0 (17.64)	513.0 (20.20)	203.2 (8.00)	460.7 (18.14)
THP7-400 - 300 A & C	222.5 (8.76)	453.6 (17.86)	518.6 (20.42)	203.2 (8.00)	466.3 (18.36)
THP7-400 - 350 A & C	222.5 (8.76)	459.2 (18.08)	524.2 (20.64)	203.2 (8.00)	471.9 (18.58)
THP7-400 - 400 A & C	222.5 (8.76)	463.8 (18.26)	528.8 (20.82)	203.2 (8.00)	476.5 (18.76)
THP7-450 - 250 A & C	227.8 (8.97)	453.6 (17.86)	518.6 (20.42)	208.5 (8.21)	466.3 (18.36)
THP7-450 - 300 A & C	227.8 (8.97)	454.2 (18.08)	524.2 (20.64)	208.5 (8.21)	471.9 (18.58)
THP7-450 - 350 A & C	227.8 (8.97)	464.8 (18.30)	529.8 (20.86)	208.5 (8.21)	477.5 (18.80)
THP7-450 - 400 A & C	227.8 (8.97)	469.1 (18.47)	534.1 (21.03)	208.5 (8.21)	481.8 (18.97)
THP7-450 - 450 A & C	227.8 (8.97)	474.4 (18.68)	539.4 (21.24)	208.5 (8.21)	487.1 (19.18)
THP7-500 - 250 A & C	233.6 (9.20)	459.2 (18.08)	524.2 (20.64)	214.3 (8.44)	471.9 (18.58)
THP7-500 - 300 A & C	233.6 (9.20)	464.8 (18.30)	529.8 (20.86)	214.3 (8.44)	477.5 (18.80)
THP7-500 - 350 A & C	233.6 (9.20)	470.4 (18.52)	535.4 (21.08)	214.3 (8.44)	483.1 (19.02)
THP7-500 - 400 A & C	233.6 (9.20)	474.9 (18.70)	540.0 (21.26)	214.3 (8.44)	487.6 (19.20)
THP7-500 - 450 A & C	233.6 (9.20)	480.5 (18.92)	545.5 (21.48)	214.3 (8.44)	493.2 (19.42)
THP7-500 - 500 A & C	233.6 (9.20)	486.1 (19.14)	551.1 (21.70)	214.3 (8.44)	498.8 (19.64)
THP7-550 - 250 A & C	239.2 (9.42)	464.8 (18.30)	529.8 (20.86)	219.9 (8.66)	477.5 (18.80)
THP7-550 - 300 A & C	239.2 (9.42)	470.4 (18.52)	535.4 (21.08)	219.9 (8.66)	483.1 (19.02)
THP7-550 - 350 A & C	239.2 (9.42)	475.9 (18.74)	541.0 (21.30)	219.9 (8.66)	488.6 (19.24)
THP7-550 - 400 A & C	239.2 (9.42)	480.5 (18.92)	545.5 (21.48)	219.9 (8.66)	493.2 (19.42)
THP7-550 - 450 A & C	239.2 (9.42)	486.1 (19.14)	551.1 (21.70)	219.9 (8.66)	498.8 (19.64)
THP7-550 - 500 A & C	239.2 (9.42)	491.7 (19.36)	556.2 (21.92)	219.9 (8.66)	504.4 (19.86)
THP7-550 - 550 A & C	239.2 (9.42)	497.3 (19.58)	562.3 (22.14)	219.9 (8.66)	510.0 (20.08)