

# **GOLD CUP®** **Spare Parts and Exploded Views**

P24-30 Options

HY28-2678-03/GC/US

Effective: March 15, 2013

aerospace  
climate control  
electromechanical  
filtration  
fluid & gas handling  
hydraulics  
pneumatics  
process control  
sealing & shielding



ENGINEERING YOUR SUCCESS.

[www.comoso.com](http://www.comoso.com)

## Hydraulic Pump Division and Denison Hydraulics

The Hydraulic Pump Division of Parker Hannifin was formed in 2004 when our significant piston pump business was expanded through the acquisition of **Denison Hydraulics**. The addition of **Denison** allowed us to marry the wealth of knowledge that both companies have in the design, manufacture, and application of piston products in both open circuit and closed circuit system applications. Since before WWII, **Denison** products have been chosen for Military test stand applications and for shipboard hydraulic applications being recognized as technology leaders.

The heavy duty **GOLD CUP®** series of pumps in this catalog represent a broadening of our product offering with hydrostatic transmission applications in marine, drilling, and shredding applications, among others. The tried and true design of the **GOLD CUP®** product line incorporates features such as integral servo and replenishing pump, hot oil shuttle, and a unique servo control system; all of which combine to provide a rugged self contained package which can withstand the harshest of conditions and continue to perform with trouble free long life.

The division is a leading worldwide manufacturer of hydraulic components and systems for earthmoving and construction vehicles; for mining equipment; for pulp and paper, chemical and other processing equipment; for ships and ordnance equipment; and for such in-plant machines as machine tools, plastic molding, die casters, and stamping presses.



**DENISON** Hydraulics

The product information, specifications, and descriptions contained in this publication have been compiled for the use and convenience of our customers from information furnished by the manufacturer; and we can not, and do not, accept any responsibility for the accuracy or correctness of any description, calculation, specification, or information contained herein. No such description, calculation, specification, or information regarding the products being sold has been made part of the basis of the bargain, nor has same created or amounted to an express warranty that the products would conform thereto. We are selling the goods and merchandise illustrated and described on this publication on an "as is" basis, and disclaim any implied warranty, including any warranty of merchantability or warranty of fitness for any particular purpose whatsoever, with respect to the goods and merchandise sold. All manufacturer warranties shall be passed on to our customers, but we shall not be responsible for special, indirect, incidental, or consequential damages resulting from the use of any of the products or information contained or described on this publication. Further, we reserve the right to revise or otherwise make product improvements at any time without notification.

### **WARNING - USER RESPONSIBILITY**

FAILURE OR IMPROPER SELECTION OR IMPROPER USE OF THE PRODUCTS DESCRIBED HEREIN OR RELATED ITEMS CAN CAUSE DEATH, PERSONAL INJURY AND PROPERTY DAMAGE.

This document and other information from Parker-Hannifin Corporation, its subsidiaries and authorized distributors provide product or system options for further investigation by users having technical expertise.

The user, through its own analysis and testing, is solely responsible for making the final selection of the system and components and assuring that all performance, endurance, maintenance, safety and warning requirements of the application are met. The user must analyze all aspects of the application, follow applicable industry standards, and follow the information concerning the product in the current product catalog and in any other materials provided from Parker or its subsidiaries or authorized distributors.

To the extent that Parker or its subsidiaries or authorized distributors provide component or system options based upon data or specifications provided by the user, the user is responsible for determining that such data and specifications are suitable and sufficient for all applications and reasonably foreseeable uses of the components or systems.

### **OFFER OF SALE**

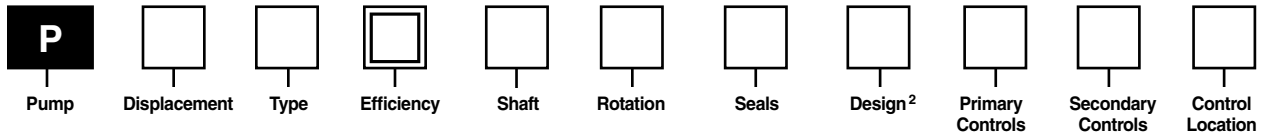
The items described in this document are hereby offered for sale by Parker-Hannifin Corporation, its subsidiaries or its authorized distributor. This offer and its acceptance are governed by the provisions stated in the detailed "Offer of Sale" elsewhere in this document.

<b>Pump Ordering Code</b> .....	<b>2</b>
<b>P24-30 Sectional Views</b> .....	<b>4</b>
Section View - A - Input Shaft & Retainer Assembly .....	6
Section View - A - Kits.....	8
P24/30 Shaft Sleeve Installation Tool Details .....	9
Section View - B - Housing, Flange, & Stem Assembly.....	10
Section View - C - Cam & Cradle Assembly .....	12
Section View - D - Rotating Group Assembly .....	14
Section View - E - Pump Type - P - Port Block Assembly.....	16
Section View - E - Pump Type - S - Port Block Assembly.....	18
Section View - E - Pump Type - X - Port Block Assembly.....	22
Section View - E - Pump Type - R & L - Port Block Assembly.....	24
Section View - F - Valve Block Assembly.....	28
<b>Offer of Sale</b> .....	<b>31</b>

Notes:

1. Parts list and associated drawings shown in this bulletin are for standard model pumps only. All documentation for special "M2" modification pump model numbers must be verified with a HPD Factory Representative prior to ordering parts for such products.
2. \* Indicates Special Instructions or Considerations.
3. \*\* Indicates Common Parts.
4. N/A Indicates Not Available or Not Applicable.
5. All documentation represented in this bulletin is for standard production models only, (as follows):
  - 5.1. P24 = Design Level "E" Model Pump
  - 5.2. P30 = Design Level "B" Model Pump
6. See ordering code for configuration options.
7. All orientation references are described when viewing pump from main drive shaft with valve block up.
8. Assembly part numbers with - 0 suffixes, indicate Buna N (Nitrile) seal compound. For Ethylene Propylene, (EPR), compound, use - 4 suffix. For Fluorocarbon compound use - 5 suffixes.
9. Detail part numbers for O-rings with 671 / 691 prefix, indicate Buna N (Nitrile) seal compound. For Ethylene Propylene, (EPR), compound, use 674 / 694 prefix. For Fluorocarbon compound use 675 / 695 prefix.
10. Drawings with items marked with double balloons "⊙", indicate assemblies.





Code	Displacement
6	6.00 in³/rev (98 cc/rev)
7	7.25 in³/rev (119 cc/rev)
8	8.00 in³/rev (131 cc/rev)
11	11.0 in³/rev (180 cc/rev)
14	14.0 in³/rev (229 cc/rev)
24	24.6 in³/rev (403 cc/rev)
30	30.6 in³/rev (501 cc/rev)

Code	Type
F	Fixed Displacement, Open/Closed Circuit
M	Fixed Displacement with High Torque Thru-Drive, Open/Closed Circuit
P	Variable Displacement, Closed Circuit
X	Variable Displacement with Medium Torque Thru-Drive, Closed Circuit
S	Variable Displacement with Medium Torque Thru-Drive & Shuttle Package, Closed Circuit
R	Variable Displacement with High Torque Thru-Drive, Closed Circuit
L	Variable Displacement with High Torque Thru-Drive & Shuttle Package, Closed Circuit
V	Variable Displacement, Open Circuit (P6, 7, 8, 11 & 14 only)
D	Variable Displacement, Open & Closed Circuit (P6, 7 & 8 only)

Code	Efficiency
H	High Efficiency (P24 only)
Omit	Standard Efficiency

Code	Shaft
2	Keyed SAE – Mechanical Shaft Seal (Single Lip Seal on P6, 7, 8F/M)
3	Splined SAE – Mechanical Shaft Seal (Single Lip Seal on P6, 7, 8F/M)
4	Keyed SAE-D (Mounting & Shaft) – Mechanical Shaft Seal (P6, 7 & 8 only, Single Lip Seal on Fixed Displacement Pumps)
-5	Splined SAE-D (Mounting & Shaft) – Mechanical Shaft Seal (P6, 7 & 8 only, Single Lip Seal on Fixed Displacement Pumps)
7	Keyed SAE – Double Lip Shaft Seal
8	Splined SAE – Double Lip Shaft Seal
9	Keyed (long) SAE – Double Lip Shaft Seal
10	Keyed (long) SAE – Mechanical Shaft Seal

Code	Rotation
R	Clockwise
L	Counterclockwise


Code	Seals
1	Nitrile (Buna-N)
4	EPR <sup>1,3</sup>
5	Fluorocarbon

Code	Primary Controls
Omit	None (Fixed Displacement only)
10	Screw Adjustment (Spring Offset to Maximum Displacement)
2A	Cylinder Control w/Adjustable Maximum Volume Stops
2H	Cylinder Control – 3-Position (Spring Control with Zero Adjustment)
2M	Cylinder Control – 2-Position Electrohydraulic w/Adjustable Maximum Volume Stop (Spring Offset to Maximum Displacement) <sup>1</sup>
2N	Cylinder Control – 3-Position (Spring Centered) Electrohydraulic <sup>1</sup>
40	Rotary Servo – Spring Centered
4A	Rotary Servo – Spring Centered w/ Adjustable Maximum Volume Stops
4B	Rotary Servo – Spring Centered w/ Automatic Brake Control
4C	Rotary Servo – Spring centered w/ Adjustable Maximum Volume Stops & Automatic Brake Control
5A	Electrohydraulic Stroker w/Adjustable Maximum Volume Stops <sup>1</sup>
5C	Electrohydraulic Stroker w/Adjustable Maximum Volume Stops & Automatic Brake Control <sup>1</sup>
7D	High IQ with 10 GPM Servo Valve & Volume Indicator <sup>1</sup>
7F	High IQ with 10 GPM Servo Valve & 4A (Rotary Servo) Control <sup>1</sup>
7J	High IQ with DF+ Valve & Volume Indicator <sup>1</sup>
7K	High IQ with DF+ Valve & 4A (Rotary Servo) Control <sup>1</sup>
8A	Hydraulic Stroker w/Adjustable Maximum Volume Stops
8C	Hydraulic Stroker w/Adjustable Maximum Volume Stops & Automatic Brake Control
9A	Electrohydraulic Stroker w/Adjustable Maximum Volume Stops <sup>1</sup>
9C	Electrohydraulic Stroker w/Adjustable Maximum Volume Stops & Automatic Brake Control <sup>1</sup>
9D	Electro-hydraulic stroker w/ adjustable maximum volume stops

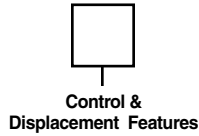
Code	Secondary Controls
Omit	None (Fixed Displacement only)
2	Volume Indicator
4	Torque Limiter & Volume Indicator
6	Cam Position Feedback Potentiometer <sup>1</sup>
7	Cam Position Feedback RVD (AC) <sup>1</sup>
8	Cam Position Feedback RVD (DC) <sup>1</sup>

Code	Control Location
Omit	None (Fixed Displacement only)
A	Primary Control on Port A Side
B	Primary Control on Port B Side

1 Not ATEX approved.  
 2 Assigned by manufacturer  
 3 Not available when using "5A" or "5C" primary controls. Pump will be unpainted unless otherwise specified.

 = Omit if not required





Control	Code	Control & Displacement Features
2M* & 2N*	00	CETOP3, NG6 Valve, 110AC/60Hz with Hirschmann Connector <sup>1</sup>
	01	CETOP3, NG6 Valve, 12VDC with Hirschmann Connector <sup>1</sup>
	02	CETOP3, NG6 Valve, 240VAC/50Hz with Hirschmann Connector <sup>1</sup>
	03	CETOP3, NG6 Valve, 110VAC/60Hz, Wiring Box <sup>1</sup>
	04	CETOP3, NG6 Valve, 12VDC, Wiring Box <sup>1</sup>
	05	CETOP3 (D03, NG6) Interface, No Valve <sup>1</sup>
	06	CETOP3, NG6 Valve, 24VDC with Hirschmann Connector <sup>1</sup>
	07	CETOP3, NG6 Valve, 110VAC/50Hz with Hirschmann Connector <sup>1</sup>
5**	00	With Deadband <sup>1</sup>
	01	Without Deadband <sup>1</sup>
7**	00	Without Manual Override Shutoff <sup>1</sup>
	01	With Manual Override Shutoff <sup>1</sup> (required for F & K primary options)
8**	00	75-350 PSI (5-24 Bar)
	01	75-435 PSI (5-30 Bar)
	02	100-375 PSI (7-26 Bar)
	03	150-400 PSI (10-28 Bar)
	04	75-250 PSI (5-17 Bar)
9**	00	24VDC
	01	12VDC
All Other	00	None <sup>1</sup>
Pump	Code	Reduced Displacement
P**F & P**M	00	Standard Cam (19°)
	10	P6 with 17° Cam – 5.3 in <sup>3</sup> /rev (87cc/rev)
		P7 with 17° Cam – 6.4 in <sup>3</sup> /rev (105 cc/rev)
		P8 with 17° Cam – 7.1 in <sup>3</sup> /rev (116 cc/rev)
		P11 with 17° Cam – 9.7 in <sup>3</sup> /rev (160 cc/rev)
		P14 with 17° Cam – 12.5 in <sup>3</sup> /rev (205 cc/rev)
20	P24 with 17° Cam – 22.0 in <sup>3</sup> /rev (360 cc/rev)	
	P30 with 17° Cam – 27.2 in <sup>3</sup> /rev (446 cc/rev)	
	P6 with 15° Cam – 4.6 in <sup>3</sup> /rev (76 cc/rev)	
	P7 with 15° Cam – 5.6 in <sup>3</sup> /rev (92 cc/rev)	
30	P8 with 15° Cam – 6.2 in <sup>3</sup> /rev (102 cc/rev)	
	P11 with 15° Cam – 8.5 in <sup>3</sup> /rev (140 cc/rev)	
	P14 with 15° Cam – 10.9 in <sup>3</sup> /rev (179 cc/rev)	
	P6 with 13° Cam – 4.0 in <sup>3</sup> /rev (66 cc/rev)	
		P7 with 13° Cam – 4.8 in <sup>3</sup> /rev (79 cc/rev)
		P8 with 13° Cam – 5.3 in <sup>3</sup> /rev (88 cc/rev)

Code	Internal Pump
0	1.07 in <sup>3</sup> /rev (17.5 cc/rev) – P6, 7, 8P/S/X/V/D & P11, 14V only** 2.14 in <sup>3</sup> /rev (35 cc/rev) – P11, 14P/S/X only** 2.81 in <sup>3</sup> /rev (46 cc/rev) – P24, 30P/S/X only (standard)**
1	1.61 in <sup>3</sup> /rev (26.4 cc/rev) – P24, 30P/S/X only (auxiliary external replenishing flow required)
2	1.05 in <sup>3</sup> /rev (17.2 cc/rev) – P24, 30P/S/X only (auxiliary external replenishing flow required)
3	3.56 in <sup>3</sup> /rev (58.3 cc/rev) – P24, 30P/S/X only
4	4.84 in <sup>3</sup> /rev (79.3 cc/rev) – P24, 30P/S/X only
5	5.42 in <sup>3</sup> /rev (88.8 cc/rev) – P24, 30P/S/X only
6	6.10 in <sup>3</sup> /rev (100.0 cc/rev) – P24, 30P/S/X only
X	No Internal Pump (standard on P*R/L/F/M)

\*\* Omit code if no external drive is required.

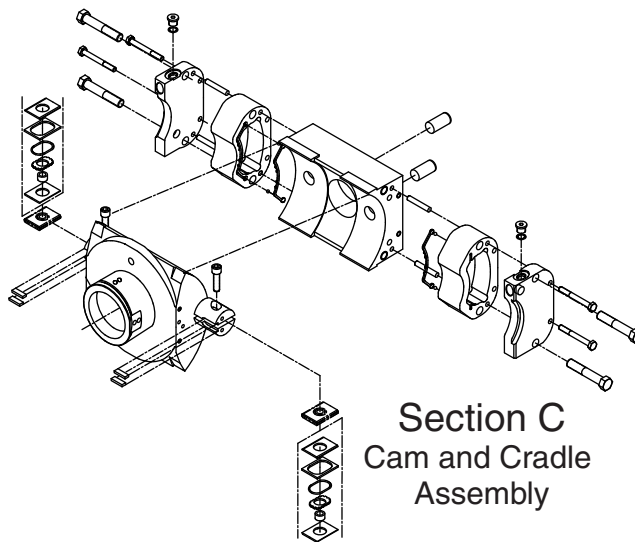
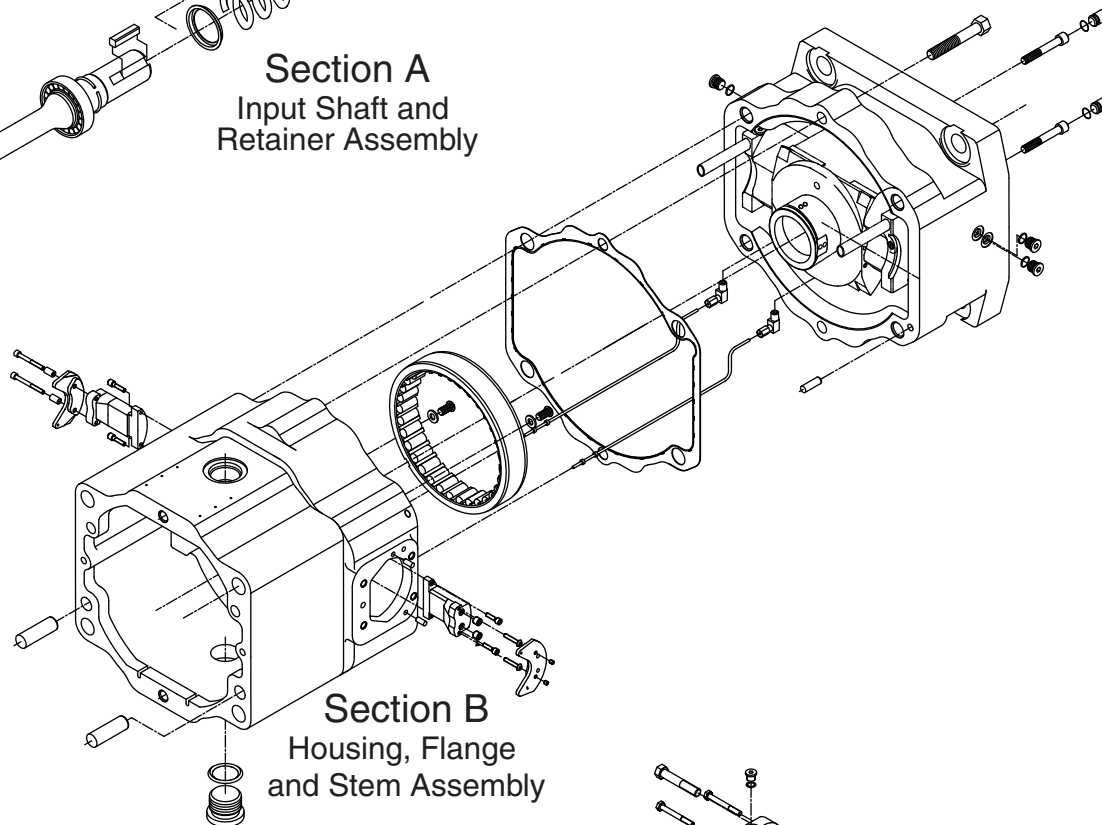
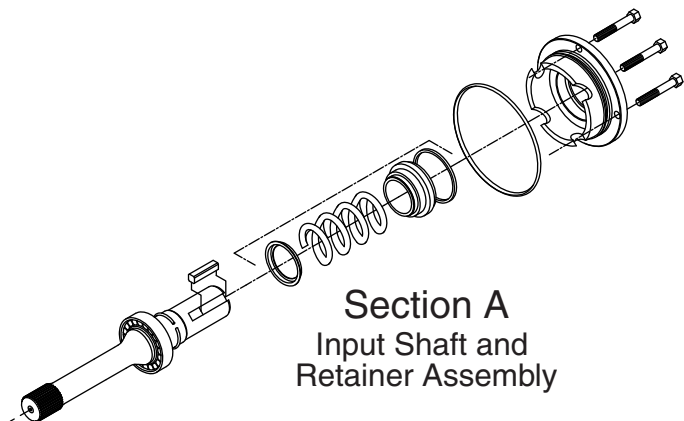
Code	External Drive
Omit	None <sup>1</sup>
M	Blanking plate – for P6, 7, 8, 11, 14S/X only
A	SAE-A (SAE 82-2) – P6, 7, 8, 11, 14S/X/R/L/M only
B	SAE-B (SAE 101-2) – P6, 7, 8, 11, 14, 24, 30/S/X/R/L/M SAE-B (SAE 101-4) – P11, 14, 24, 30R/L/M
C	SAE-C (SAE 127-2) – P6, 7, 8, 11, 14, 24, 30R/L/M & P24, 30S/X SAE-C (SAE 127-4) – P11, 14, 24, 30R/L/M
D	SAE-D (SAE 152-4) – P11, 14, 24, 30R/L/M only
E	SAE-E (SAE 165-4) – P11, 14, 24, 30R/L/M only
F	SAE-F (SAE 177-4) – P24, 30R/L/M only

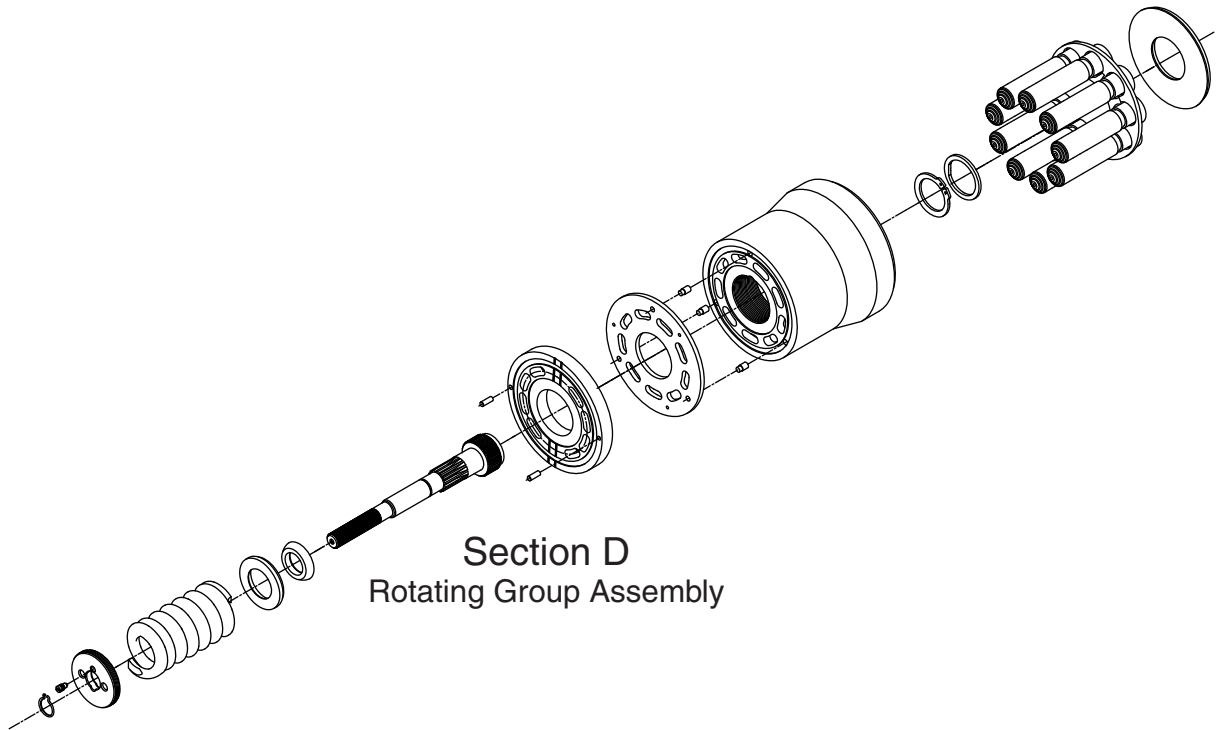
Code	External Mounting
Omit	No External Drive Required
0	No External Pump Mounted
1	External Pump Mounted (must be separately specified) – Requires Special Modification “-M2” <sup>1</sup>
2	ATEX Externally Mounted Pump

Code	Special Modifications
Omit	None
NP	No Paint <sup>1</sup>
EX	ATEX APPROVED PUMP (May contain additional modifications. Contact tech support.)
M2	Other Special Modification (example: bronze caged barrel bearing for low viscosity fluids, tandem pumps, etc.) <sup>1</sup>

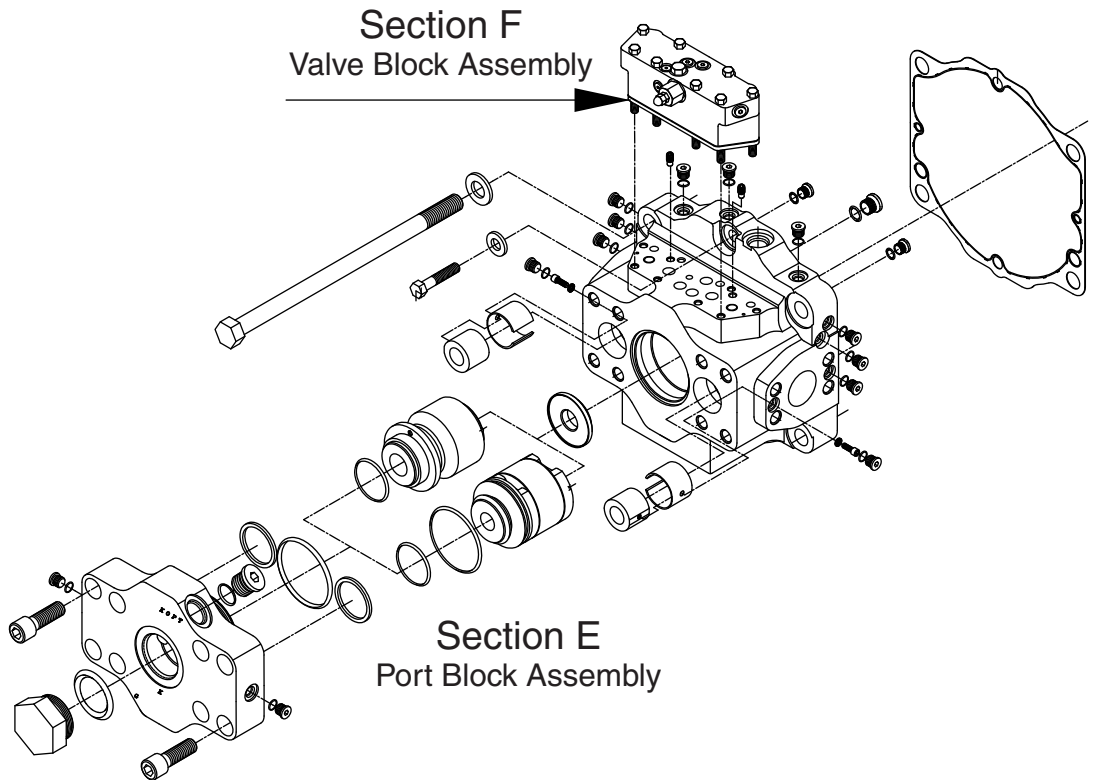
= Omit if not required







Section D  
Rotating Group Assembly

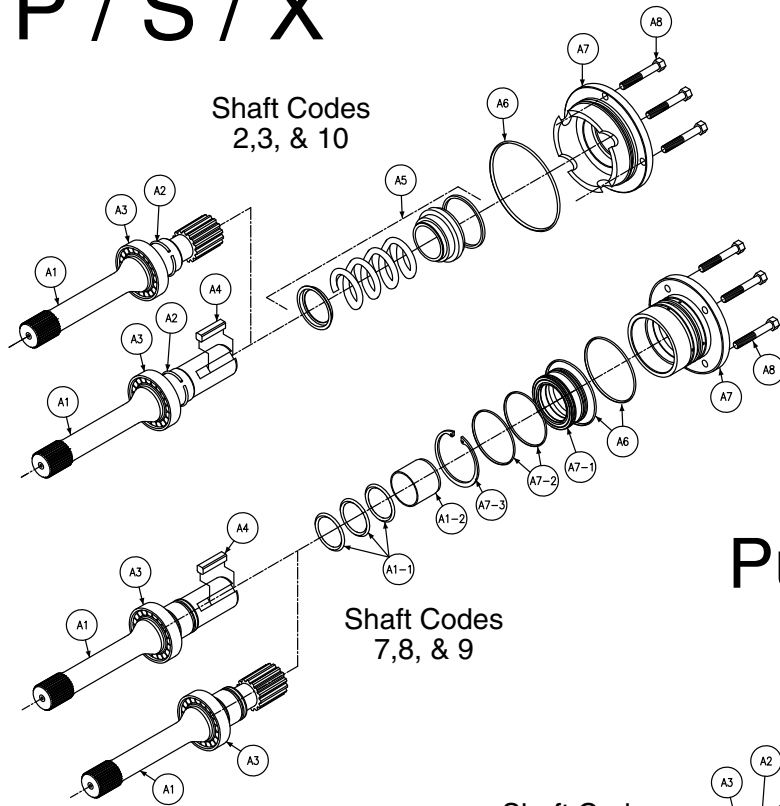


Section F  
Valve Block Assembly

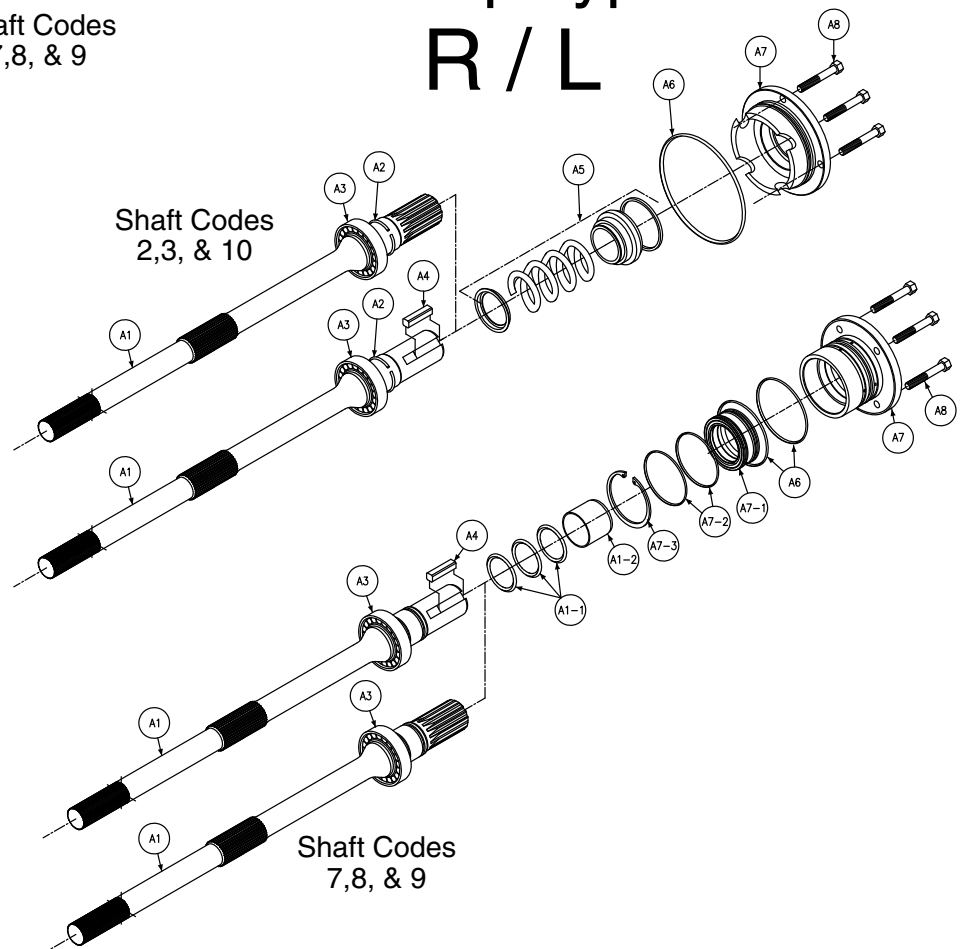
Section E  
Port Block Assembly



# Pump Type P / S / X



# Pump Type R / L





Section A							
P24/30 Input Shaft and Retainer Assembly							
Balloon #	Pump Type	Shaft Code	Seal Code	Item #	Description	Qty	
A1	P/S/X	2	**	033-91140-0	Shaft, Keyed Mech Seal	1	
	P/S/X	3	**	033-91139-0	Shaft, Splined Mech Seal		
	P/S/X	7	**	*033-94118-0	Shaft, Keyed Lip Seal		
	P/S/X	8	**	*033-94177-0	Shaft, Splined Lip Seal		
	P/S/X	9	**	*033-94192-0	Shaft, Keyed Long w lip seals		
	P/S/X	10	**	033-93610-0	Shaft, Keyed, long w mech seal		
	R/L	2	**	033-92843-0	Shaft, Keyed Mech Seal		
	R/L	3	**	033-92729-0	Shaft, Splined Mech Seal		
	R/L	7	**	*033-94178-0	Shaft, Keyed Lip Seal		
	R/L	8	**	*033-94179-0	Shaft, Splined Lip Seal		
	R/L	9	**	033-93615-0	Shaft, Keyed Long w lip seals		
	R/L	10	**	033-93616-0	Shaft, Keyed, long w mech seal		
A1-1	P/S/X	7/8/9	1	671-00133-0	Gasket O-ring	3	
			4	674-00133-0			
			5	675-00133-0			
	R/L	7/8	1	671-00133-0		Gasket O-ring	3
			4	674-00133-0			
5	675-00133-0						
A1-2	P/S/X	7/8/9	**	033-94117-0	Sleeve, Shaft	1	
	R/L	7/8	**	033-94117-0	Sleeve, Shaft	1	
A2	P/S/X	2/3/10	**	033-71712-0	Ring, Retaining	1	
		7/8/9	**	not used		not used	
	R/L	2/3/9/10	**	033-71712-0	Ring, Retaining	1	
		7/8	**	not used		not used	
A3	P/S/X/R/L	2/3/7/8/9/10	**	230-82213-0	Bearing, Shaft	1	
A4	P/S/X/R/L	2/7	**	033-71910-0	Key, Square	1	
		9/10	**	033-93619-0			
A5	P/S/X/R/L	2/3/10	4	623-00015-4	Seal, Shaft - Mechanical	1	
		2/3/10	5	623-00015-5			
A6	P/S/X/R/L	2/3/10	1	671-00246-0	Gasket O-ring	1	
		2/3/10	4	674-00246-0			
		2/3/10	5	675-00246-0			
	P/S/X/R/L	7/8/9	1	671-00246-0		2	
		7/8/9	4	674-00246-0			
		7/8/9	5	675-00246-0			
A7	P/S/X/R/L	2/3/10	**	033-57472-0	Retainer, Seal	1	
		7/8/9	**	033-95484-0		1	
A7-1	P/S/X/R/L	7/8/9	**	620-82126-0	Seal, Shaft Lip Bi-Directional	1	
A7-2	P/S/X/R/L	7/8/9	1	671-00149-0	Gasket O-ring	2	
		7/8/9	4	674-00149-0			
		7/8/9	5	675-00149-0			
A7-3	P/S/X/R/L	7/8/9	**	356-65160-0	Ring, Retaining	1	
A8	P/S/X/R/L	2/3/7/8/9/10	**	306-40123-0	Screw, HHC 3/8-16 UNC X 1 1/4 Lg	4	

Note: Shaft part numbers marked with \* are not usable without items A1-1 & A1-2, (o'rings and sleeve).



P24/30 Seal Kits				
Note: Seal kits for "M" mod pumps and for aux pumps require part verification with HPD factory representatives. Standard Seal Kits below contain seals for the following				
1. Main pump				
2. Valve block				
3. Input/output controls				
4. shaft seal				
Pump Type	Shaft Code	Rotation	Seal Code	Part Number
P24/30 P	2/3	**	1	S23-18006-0
P24/30 R	2/3	**	1	S23-18016-0
P24/30 X	2/3	**	1	S23-15514-0
P24/30 P	7/8/9	CW	1	S23-17038-0
P24/30 P	7/8/9	CCW	1	S23-17039-0
P24/30 R	7/8/9	CW	1	S23-17017-0
P24/30 R	7/8/9	CCW	1	S23-17018-0
P24/30 X	7/8/9	CW	1	S23-18022-0
P24/30 X	7/8/9	CCW	1	S23-18023-0
P24/30 S	2/3	**	1	S23-17040-0
P24/30 L	2/3	**	1	S23-18019-0
P24/30 S	7/8/9	CW	1	S23-17041-0
P24/30 S	7/8/9	CCW	1	S23-17042-0
P24/30 L	7/8/9	CW	1	S23-18020-0
P24/30 L	7/8/9	CCW	1	S23-18021-0
P24/30 S	2/3	**	1	S23-11600-0
P24/30 S	7/8/9	CW	1	S23-15696-0
P24/30 S	7/8/9	CCW	1	S23-15696-0

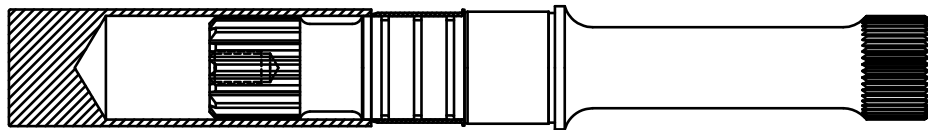
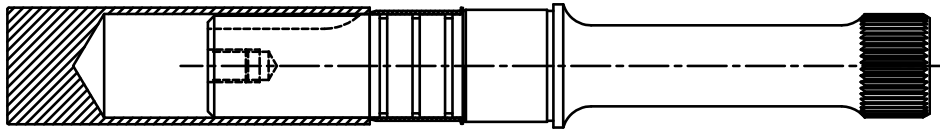
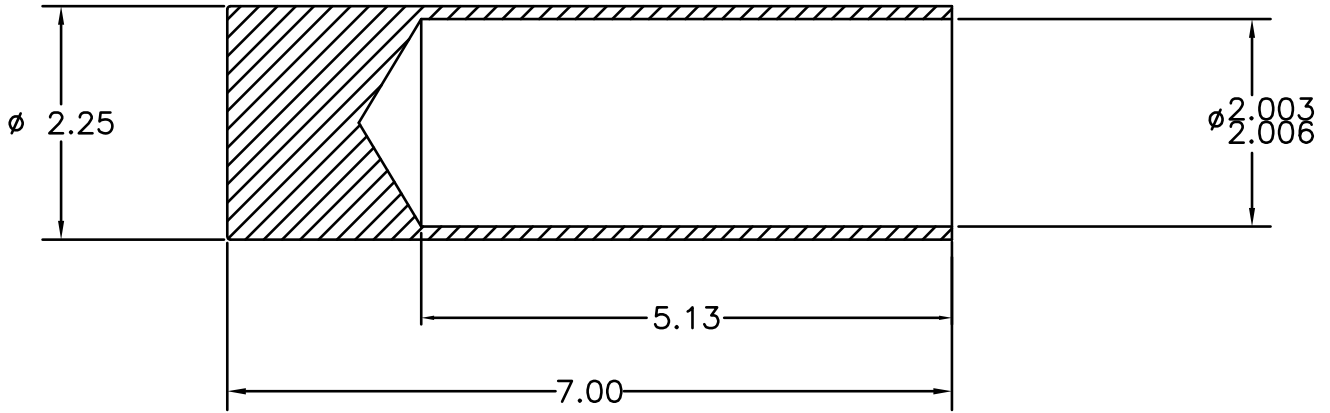
P24/30 Shaft and Bearing Assembly Kits		
Composed of items A1, A1-1, A1-2, A2, A3, A4 as applicable		
Pump Type	Shaft Code	Part Number
P/S/X	2	S23-12475-0
P/S/X	3	S23-12474-0
P/S/X	7	S23-18233-0
P/S/X	8	S23-18234-0
P/S/X	9	S23-18235-0
P/S/X	10	S23-17491-0
R/L	2	S23-16362-0
R/L	3	S23-16364-0
R/L	7	S23-16473-0
R/L	8	S23-16475-0
R/L	9	S23-17496-0
R/L	10	S23-17497-0

Replacement shaft sleeve & o'rings are available for Pump Type P/S/X/R/L with 7/8/9 shafts. However, special tool P/N 213-0-004202 is required to remove and install the sleeve.  
 Note: See Page 9 for tool details.

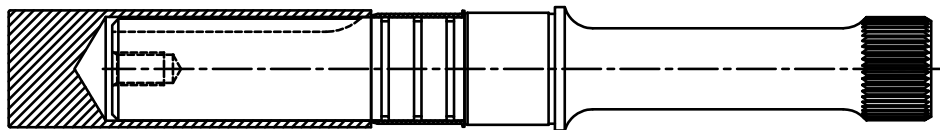
P24/30 Seal retainer assembly kits				
Composed of Items: A7 A7-1, A7-2, and A7-3				
Shaft Code	Pump Type	Rotation	Seal Code	Part Number
7/8/9	P/V/X/S/R/L	Bi-Directional	1	S23-15391-0



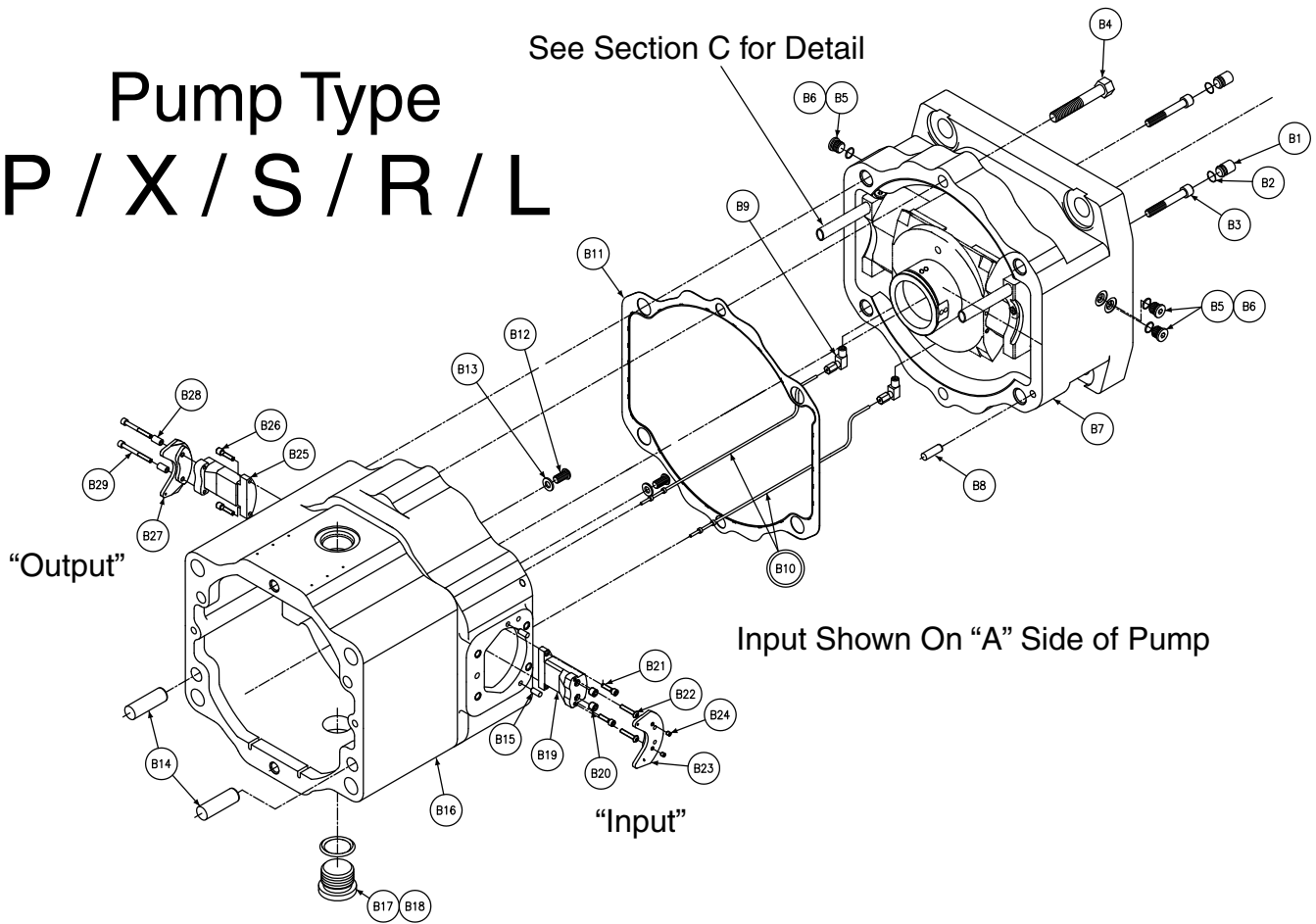
Material: Medium carbon steel heat treated to 27–34 RC



DO NOT HAMMER OR OTHERWISE IMPACT!  
APPLY A CONSTANT PRESSING FORCE ONLY!



# Pump Type P / X / S / R / L

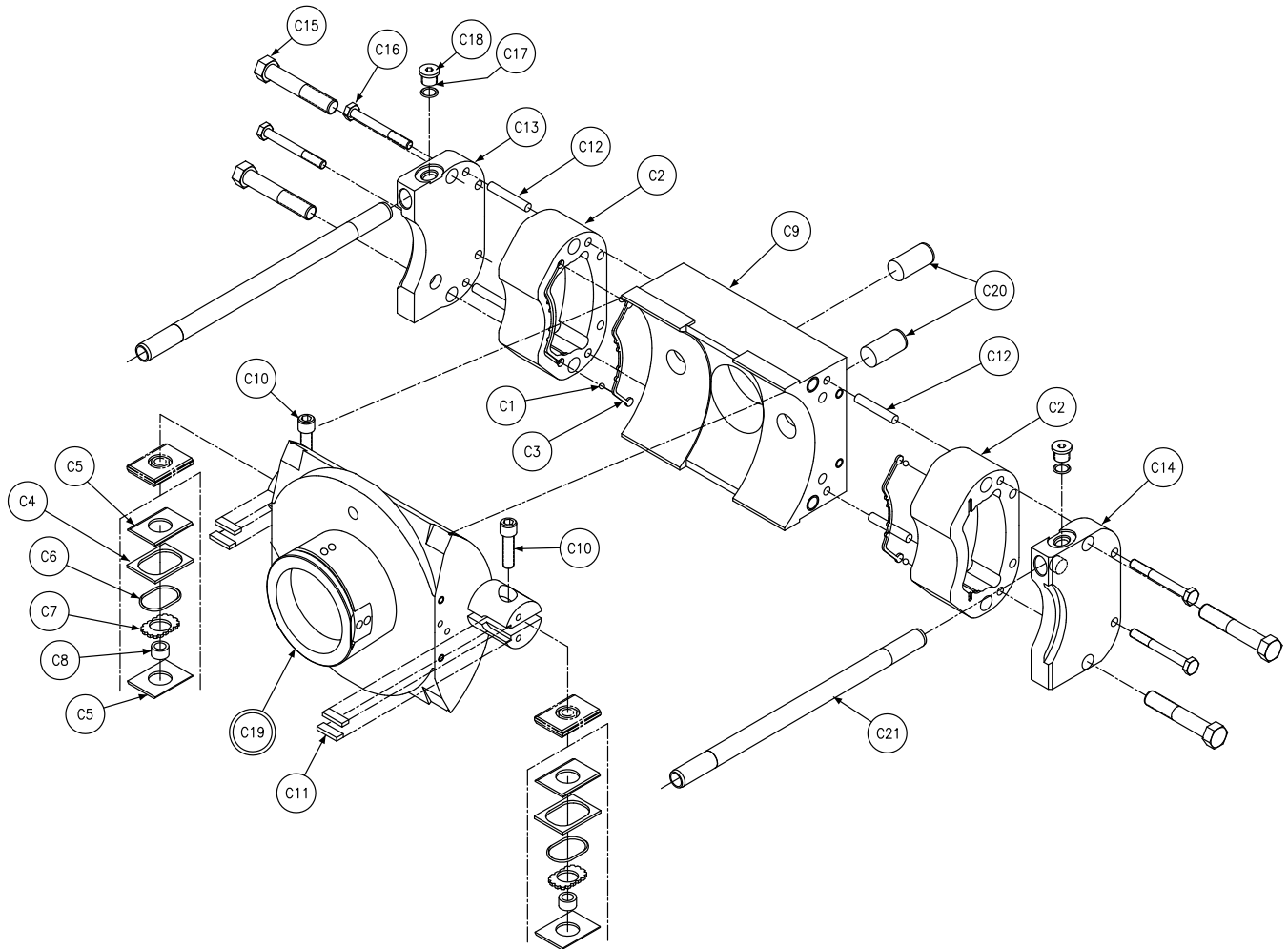


Section B							
P24/30 Housing, Mounting Flange, Input, and Output Stems							
Balloon #	Displacement	Pump Type	Shaft Code	Seal Code	Item #	Description	Qty
B1	P24/P30	P/S/X/R/L	2/3/7/8/9/10	**	033-57475-0	Plug	2
B2	P24/P30	P/S/X/R/L	2/3/7/8/9/10	1	671-00111-0	Gasket, O-ring	2
	P24/P30	P/S/X/R/L	2/3/7/8/9/10	4	674-00111-0		
	P24/P30	P/S/X/R/L	2/3/7/8/9/10	5	675-00111-0		
B3	P24/P30	P/S/X/R/L	2/3/7/8/9/10	**	358-16260-0	Screw, SHC 3/8-16 UNC X 2-1/4 LG	2
B4	P24/P30	P/S/X/R/L	2/3/7/8/9/10	**	306-40009-0	Screw, SHC 5/8-11 UNC X 3 LG	2
B5	P24/P30	P/S/X/R/L	2/3/7/8/9/10	1	691-00904-0	Gasket, O-ring	3
	P24/P30	P/S/X/R/L	2/3/7/8/9/10	4	694-00904-0		
	P24/P30	P/S/X/R/L	2/3/7/8/9/10	5	695-00904-0		
B6	P24/P30	P/S/X/R/L	2/3/7/8/9/10	**	488-35061-0	SHC Plug	3
B7	P24/P30	P/S/X/R/L	2/3/7/8/9/10	**	033-91137-0	Flange, Mounting	1
B8	P24/P30	P/S/X/R/L	2/3/7/8/9/10	**	324-22416-0	Pin, Dowel 3/8 X 1	1
B9	P24/P30	P/S/X/R/L	2/3/7/8/9/10	**	473-15041-0	Fitting, Elbow	2
B10	P24	P/S/X/R/L	2/3/7/8/9/10	**	S13-44469-0	P24 Pressure Feed Tube	2
	P30	P/S/X/R/L	2/3/7/8/9/10	**	S23-12172-0	P30 Pressure Feed Tube	
B11	P24/P30	P/S/X/R/L	2/3/7/8/9/10	**	033-91082-0	Gasket, Mtg.Flg.	1
B12	P24/P30	P/S/X/R/L	2/3/7/8/9/10	**	358-14106-0	Screw-SHC 1/4 X 1/2	2
B13	P24/P30	P/S/X/R/L	2/3/7/8/9/10	**	345-10020-0	Washer- 11/32	2
B14	P24/P30	P/S/X/R/L	2/3/7/8/9/10	**	324-24832-0	Pin, Dowel 3/4 X 2.00	2
B15	P24/P30	P/S/X/R/L	2/3/7/8/9/10	**	324-21608-0	Pin, Dowel 1/4 X 1/2	4
B16	P24	P/S/X/R/L	2/3/7/8/9/10	**	033-57150-0	P24 Housing	1
	P30	P/S/X/R/L	2/3/7/8/9/10	**	033-57925-0	P30 Housing	
B17	P24/P30	P/S/X/R/L	2/3/7/8/9/10	1	691-00920-0	Gasket, O-ring	1
	P24/P30	P/S/X/R/L	2/3/7/8/9/10	4	694-00920-0		
	P24/P30	P/S/X/R/L	2/3/7/8/9/10	5	695-00920-0		
B18	P24/P30	P/S/X/R/L	2/3/7/8/9/10	**	488-35019-0	Plug, STR. THD.	1
B19	P24/P30	P/S/X/R/L	2/3/7/8/9/10	**	033-91256-0	Stem, Servo	1
B20	P24/P30	P/S/X/R/L	2/3/7/8/9/10	**	033-70819-0	Plug- Orifice 1/16 Dia.	2
B21	P24/P30	P/S/X/R/L	2/3/7/8/9/10	**	358-10120-0	Screw, SHC #10-24 X 3/4 LG	2
B22	P24/P30	P/S/X/R/L	2/3/7/8/9/10	**	353-25023-0	Screw, BHC #10-24 X 1/2 LG	2
B23	P24/P30	P/S/X/R/L	2/3/7/8/9/10	**	033-53874-0	Plate, Servo	1
B24	P24/P30	P/S/X/R/L	2/3/7/8/9/10	**	312-09032-0	Screw, Set, #10-32 x3/16 LG	2
B25	P24/P30	P/S/X/R/L	2/3/7/8/9/10	**	033-71774-0	Stem, Balance	1
B26	P24/P30	P/S/X/R/L	2/3/7/8/9/10	**	358-10120-0	Screw, SHC #10-24 X 3/4 LG	2
B27	P24/P30	P/S/X/R/L	2/3/7/8/9/10	**	033-70546-0	Plate, Balance	1
B28	P24/P30	P/S/X/R/L	2/3/7/8/9/10	**	033-71247-0	Spacer	2
B29	P24/P30	P/S/X/R/L	2/3/7/8/9/10	**	359-09180-0	Screw, SHC #10-32 X 1 1/4 LG	2

<b>Stem Kits "Standard"</b>	
<b>Input stem kits include the following:</b>	
<b>B19, B20, B21, B22, B23 and B24</b>	
<b>Output stem kits include the following:</b>	
<b>B25, B26, B27, B28 and B29</b>	
<b>Description</b>	<b>Part Number</b>
P24/30 Input stem kit	S23-15110-0
P24/30 Output stem kit	S23-03950-0



# Pump Type P / X / S / L / R



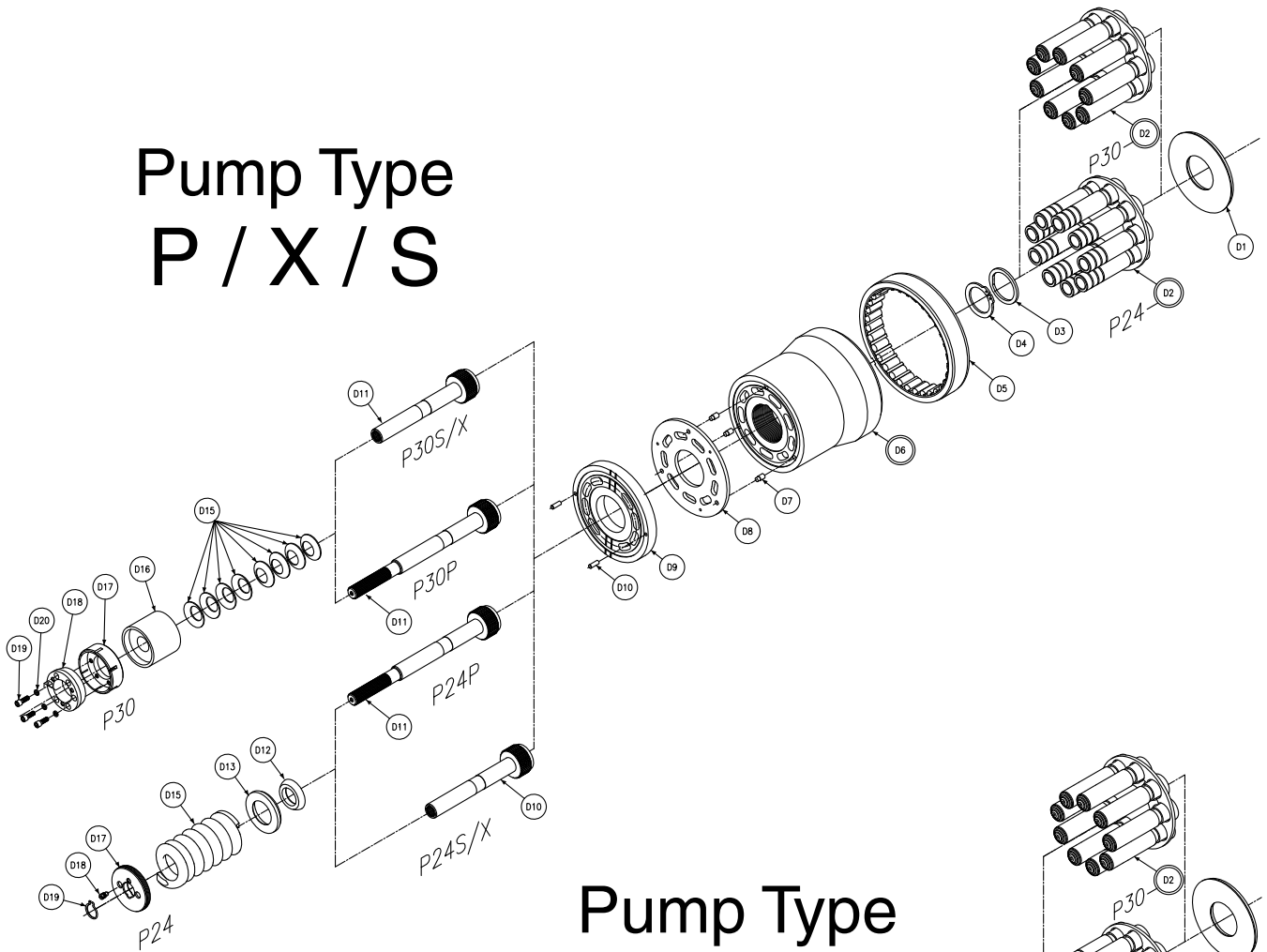
Section C								
P24/30 Cam and Cradle Assembly								
Balloon #	Displacement	Pump Type	Shaft Code	Rotation	Seal Code	Item #	Description	Qty
C1	P24/P30	P/S/X/R/L	2/3/7/8/9/10	**	**	201-06001-0	Check Ball	4
C2	P24/P30	P/S/X/R/L	2/3/7/8/9/10	**	**	033-71757-0	Vane Chamber	2
C3	P24/P30	P/S/X/R/L	2/3/7/8/9/10	**	1	606-25045-0	Seal - Molded	2
	P24/P30	P/S/X/R/L	2/3/7/8/9/10	**	4	606-25040-4		
	P24/P30	P/S/X/R/L	2/3/7/8/9/10	**	5	606-25040-5		
C4	P24/P30	P/S/X/R/L	2/3/7/8/9/10	**	**	033-71714-0	Seal - Vane	2
C5	P24/P30	P/S/X/R/L	2/3/7/8/9/10	**	**	033-71726-0	Backup Plate - Vane Seal	4
C6	P24/P30	P/S/X/R/L	2/3/7/8/9/10	**	1	691-00128-0	Gasket - O-ring	2
	P24/P30	P/S/X/R/L	2/3/7/8/9/10	**	4	674-00128-0		
	P24/P30	P/S/X/R/L	2/3/7/8/9/10	**	5	695-00128-0		
C7	P24/P30	P/S/X/R/L	2/3/7/8/9/10	**	**	033-71727-0	Spacer - Vane	2
C8	P24/P30	P/S/X/R/L	2/3/7/8/9/10	**	**	033-59806-0	Spacer (.2500/.2495-Blue)	Select fit 2
	P24/P30	P/S/X/R/L	2/3/7/8/9/10	**	**	033-59983-0	Spacer (.2515/.2510-Yellow)	
	P24/P30	P/S/X/R/L	2/3/7/8/9/10	**	**	033-59984-0	Spacer (.2530/.2525-Green)	
C9	P24/P30	P/S/X/R/L	2/3/7/8/9/10	**	**	033-91141-0	Cradle - Rocker	1
C10	P24/P30	P/S/X/R/L	2/3/7/8/9/10	**	**	359-13160-0	Screw, SHC. 5/16 -24 UNF X 1	2
C11	P24/P30	P/S/X/R/L	2/3/7/8/9/10	**	**	033-70816-0	Vane - holddown	4
C12	P24/P30	P/S/X/R/L	2/3/7/8/9/10	**	**	324-22428-0	Pin - Dowel 3/8 X 1 3/4	4
C13	P24/P30	P/S/X/R/L	2/3/7/8/9/10	CCW	**	033-71595-0	Right Control Cover	1
	P24/P30	P/S/X/R/L	2/3/7/8/9/10	CW	**	033-71598-0		
C14	P24/P30	P/S/X/R/L	2/3/7/8/9/10	CCW	**	033-71593-0	Left control cover	1
	P24/P30	P/S/X/R/L	2/3/7/8/9/10	CW	**	033-71597-0		
C15	P24/P30	P/S/X/R/L	2/3/7/8/9/10	**	**	306-40174-0	Screw, HHC 1/2-13 UNC X 3 1/4 LG	4
C16	P24/P30	P/S/X/R/L	2/3/7/8/9/10	**	**	306-40035-0	Screw, HHC 3/8-16 UNC X 3 LG	4
C17	P24/P30	P/S/X/R/L	2/3/7/8/9/10	**	1	691-00905-0	Gasket O-ring	2
	P24/P30	P/S/X/R/L	2/3/7/8/9/10	**	4	674-00905-0		
	P24/P30	P/S/X/R/L	2/3/7/8/9/10	**	5	695-00905-0		
C18	P24/P30	P/S/X/R/L	2/3/7/8/9/10	**	**	488-35020-0	Hex socket plug	2
C19	P24/P30	P/S/X/R/L	2/3/7/8/9/10	**	**	S23-12482-0	Rocker cam and Plug assembly	1
C20	P24/P30	P/S/X/R/L	**	**	**	324-24028-0	Pin, Dowel	2
C21	P24	P/S/X/R/L	2/3/7/8/9/10	**	**	033-71731-0	Tube, Override	2
	P30	P/S/X/R/L	2/3/7/8/9/10	**	**	033-57933-0		

<b>Cam and Cradle assembly</b>			
<b>Composed of items:</b>			
<b>C1 thru C19</b>			
<b>P24/30 Pump Type P,S,X,R,L</b>			
<b>Part Number</b>	<b>Pump Type</b>	<b>Shaft Type</b>	<b>Rotation</b>
S23-12481-0	P/S/X/R/L	2/3/7/8/9/10	CW
S23-12480-0	P/S/X/R/L	2/3/7/8/9/10	CCW

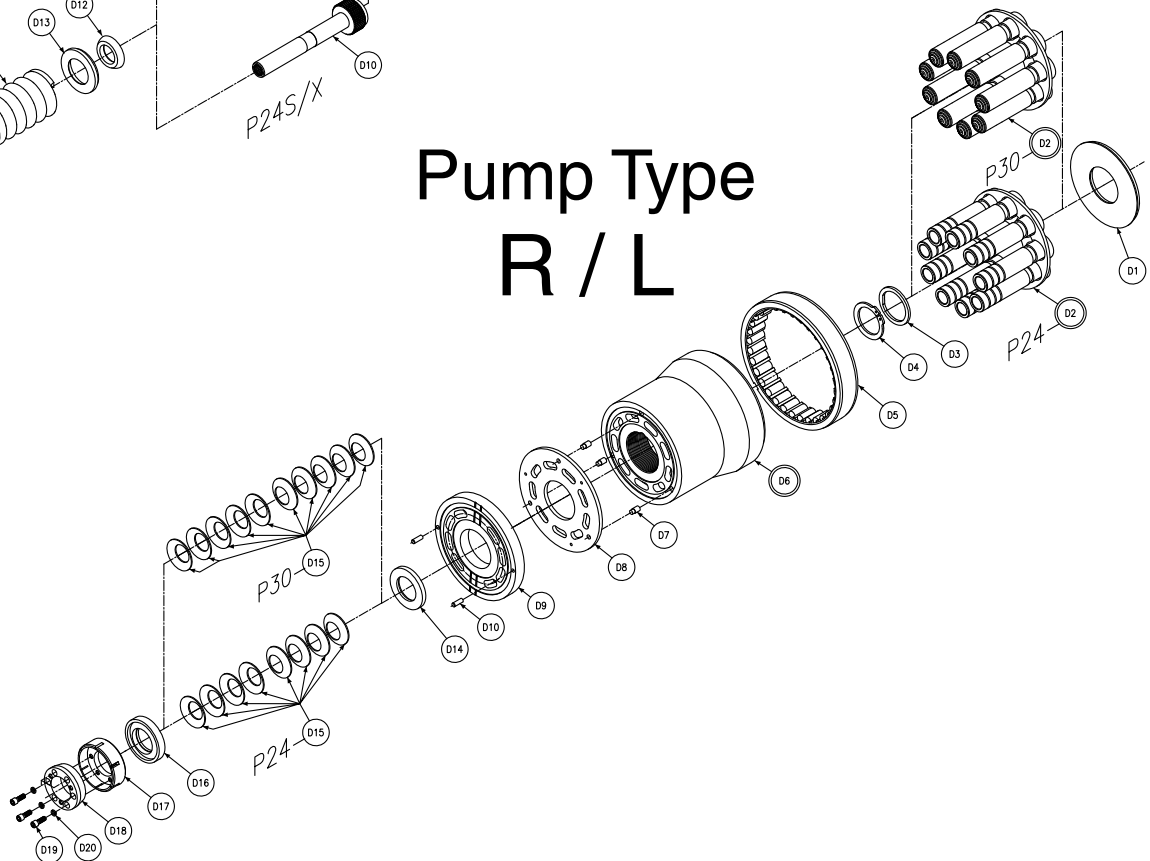




# Pump Type P / X / S



# Pump Type R / L



Section D						
P24/30 Rotating Group						
Balloon #	Displacement	Pump Type	Rotation	Item #	Description	Qty
D1	P24/P30	P/S/X/R/L	**	033-91653-0	Creep plate	1
D2	P24	P/S/X/R/L	**	S13-44470-0	Assembly, Retainer, Piston, & Shoes	1
	P30	P/S/X/R/L	**	S23-12684-0		
D3	P24/P30	P/S/X/R/L	**	033-59805-0	Bearing, thrust	1
D4	P24/P30	P/S/X/R/L	**	033-92754-0	Retaining ring, Black, .078/.077 thk	Select fit 1
	P24/P30	P/S/X/R/L	**	033-59746-0	Retaining ring, Blue, .079/.081 thk	
	P24/P30	P/S/X/R/L	**	033-71718-0	Retaining ring, Red, .081/.083 thk	
	P24/P30	P/S/X/R/L	**	033-91130-0	Retaining ring, White, .083/.085 thk	
	P24/P30	P/S/X/R/L	**	033-71717-0	Retaining ring, Green, .085/.087 thk	
D5	P24/P30	P/S/X/R/L	**	033-93046-0	Bearing, Barrel	1
D6	P24	P/S/X/R/L	**	S23-12091-0	Barrel assembly	1
	P30	P/S/X/R/L	**	S23-12170-0		
D7	P24/P30	P/S/X/R/L	**	033-59747-0	Pin, face plate	3
D8	P24	P/S/X/R/L	**	033-71748-0	Face plate	1
	P30	P/S/X/R/L	**	033-57571-0		
D9	P24	P/S/X/R/L	CW	033-71752-0	Plate - Port	1
	P24	P/S/X/R/L	CCW	033-71753-0		
	P30	P/S/X/R/L	CW	033-91238-0		
	P30	P/S/X/R/L	CCW	033-91237-0		
D10	P24/P30	P/S/X/R/L	**	324-21610-0	Pin, Dowel 1/4 x 5/8 Lg	2
D11	P24	P	**	033-57257-0	* Shaft, Internal Auxiliary Pump	1
	P30	P	**	033-91188-0		
	P24	S/X	**	033-93535-0	** Shaft, External Auxiliary Pump	
	P30	S/X	**	033-93536-0		
D12	P24	P/S/X	**	033-57147-0	Seat, Spherical	1
D13	P24	P/S/X	**	033-57148-0	Retainer, Spring	1
D14	P24/P30	R/L	**	033-92790-0	Washer, Spring backup	1
D15	P24	P/S/X	**	033-57136-0	Spring, Holddown, (Helical)	1
	P30	P/S/X	**	035-71713-0	Spring, Holddown Belleville Washer	8
	P24	R/L	**	033-92725-0	Spring, Holddown Belleville Washer	8
	P30	R/L	**	033-92725-0	Spring, Holddown Belleville Washer	10
D16	P24	R/L	**	033-92916-0	Retainer, BBL HD spring Disc	1
	P30	R/L	**	033-92788-0	Retainer, BBL HD spring Disc	
	P30	P/S/X	**	033-57138-0	Retainer, BBL HD spring Disc	
D17	P24/P30	R/L	**	033-94648-0	Nut, BBL Holddown	1
	P24	P/S/X	**	033-57139-0	Nut, BBL Holddown ADJ Screw	
	P30	P/S/X	**	033-94648-0	Nut, BBL Holddown	
D18	P24	P/S/X	**	033-57241-0	Screw, BBL Holddown retaining	1
	P30	P/S/X	**	033-94649-0	Insert, BBL Holddown Locking Nut	1
D19	P24/P30	R/L	**	358-12100-0	Screw, SHC 1/4-20 UNC X 5/8	6
	P30	P/S/X	**	033-57239-0	Lock ring	1
	P24	P/S/X	**	033-57239-0	Lock ring	1
D20	P30	P/S/X	**	346-60036-0	Lockwasher, HI collar, 1/4	6
	P24/P30	R/L	**	346-60036-0	Lockwasher, HI collar, 1/4	

**IMPORTANT NOTES: 1,2,3,4**  
 1.\* AUXILIARY DRIVE SHAFT 033-57257-0 MUST BE USED WITH REAR COVER ASSEMBLY S23-15182 FOR P24 "P" TYPE PUMPS ONLY  
 2.\* AUXILIARY DRIVE SHAFT 033-91188-0 MUST BE USED WITH REAR COVER ASSEMBLY S23-15122 FOR P30 "P" TYPE PUMPS ONLY  
 3.\*\*AUXILIARY DRIVE SHAFT 033-93535-0 MUST BE USED WITH REAR COVER ASSEMBLY S23-15183, (SAE-B EXT MOUNT), OR S23-15172, (SAE-C EXT MOUNT), FOR P24 "S&X" TYPE PUMPS ONLY  
 4 \*\* AUXILIARY DRIVE SHAFT 033-93536-0 MUST BE USED WITH REAR COVER ASSEMBLY S23-15125 (SAE-B EXT MOUNT), OR S23-17546, (SAE-C EXT MOUNT), OR S23-17546 (SAE-C EXT MOUNT), FOR P30 "S&X" TYPE PUMPS

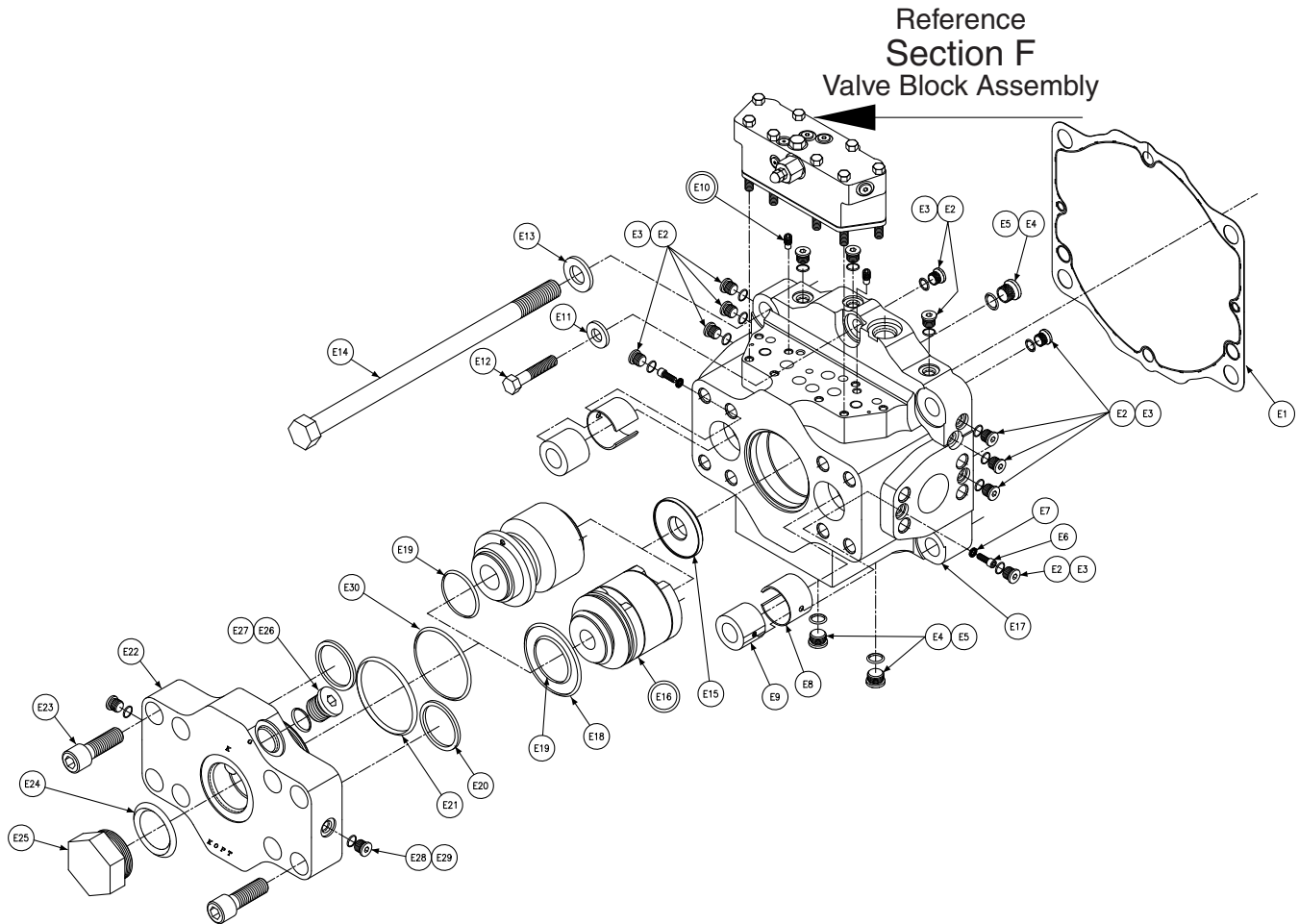
**Major Rotating Group Kit**  
**Composed of Items:**  
**D1,D2,D5,D6,D7, D8, D9,and D10**

Displacement	Model Type	Rotation	Part Number
P24	P/X/S/R/L	CW	S23-17111-0
P24	P/X/S/R/L	CCW	S23-17112-0
P30	P/X/S/R/L	CW	S23-17113-0
P30	P/X/S/R/L	CCW	S23-17114-0

**Barrel Hold Down Kit**  
**Composed of Items:**  
**D11, & D15**  
**No Kit available for R/L versions**

Displacement	Model Type	Rotation	Part Number
P24	P	**	S23-17253-0
P24	P	**	S23-17254-0
P30	S/X	**	S23-17255-0
P30	S/X	**	S23-17256-0





Section E							
P24/30 PUMP TYPE P PORT BLOCK ASSEMBLY							
Balloon #	Displacement	Pump Type	Rotation	Seal Code	Item #	Description	Qty
E1	P24/30	P24/30 P	**	**	033-91085-0	Gasket, Port Block/Housing	1
E2	P24/30	P24/30 P	**	**	488-35041-0	Plug, 6HP5N	13
E3	P24/30	P24/30 P	**	1	691-00906-0	Gasket O-ring	13
	P24/30	P24/30 P	**	4	674-00906-0		
	P24/30	P24/30 P	**	5	695-00906-0		
E4	P24/30	P24/30 P	**	**	488-35018-0	Plug, 8HP5N	3
	P24/30	P24/30 P	**	1	691-00908-0		
E5	P24/30	P24/30 P	**	4	694-00908-0	Gasket O-ring	3
	P24/30	P24/30 P	**	5	695-00908-0		
	P24/30	P24/30 P	**	**	359-11140-0		
E6	P24/30	P24/30 P	**	**	359-11140-0	Screw, SHC	2
E7	P24/30	P24/30 P	**	**	350-10168-0	Washer, LOC	2
E8	P24/30	P24/30 P	**	**	035-72355-0	Ring check, P24/30	2
E9	P24/30	P24/30 P	**	**	033-94747-0	Stop, Ring Check	2
E10	P24/30	P24/30 P	**	**	S13-40266-0	Check valve assembly	2
E11	P24/30	P24/30 P	**	**	350-10136-0	Washer, 5/8	2
E12	P24/30	P24/30 P	**	**	306-40008-0	Screw, HHC 5/8-11UNC	2
E13	P24/30	P24/30 P	**	**	350-10135-0	Washer, 7/8	4
	P24	P24/30 P	**	**	306-40221-0		
E14	P30	P24/30 P	**	**	306-40230-0	Screw, HHC 7/8-9UNC X 14	4
	P24/30	P24/30 P	**	**	033-91073-0		
E15	P24/30	P24/30 P	**	**	033-91073-0	Washer, Sealing	1

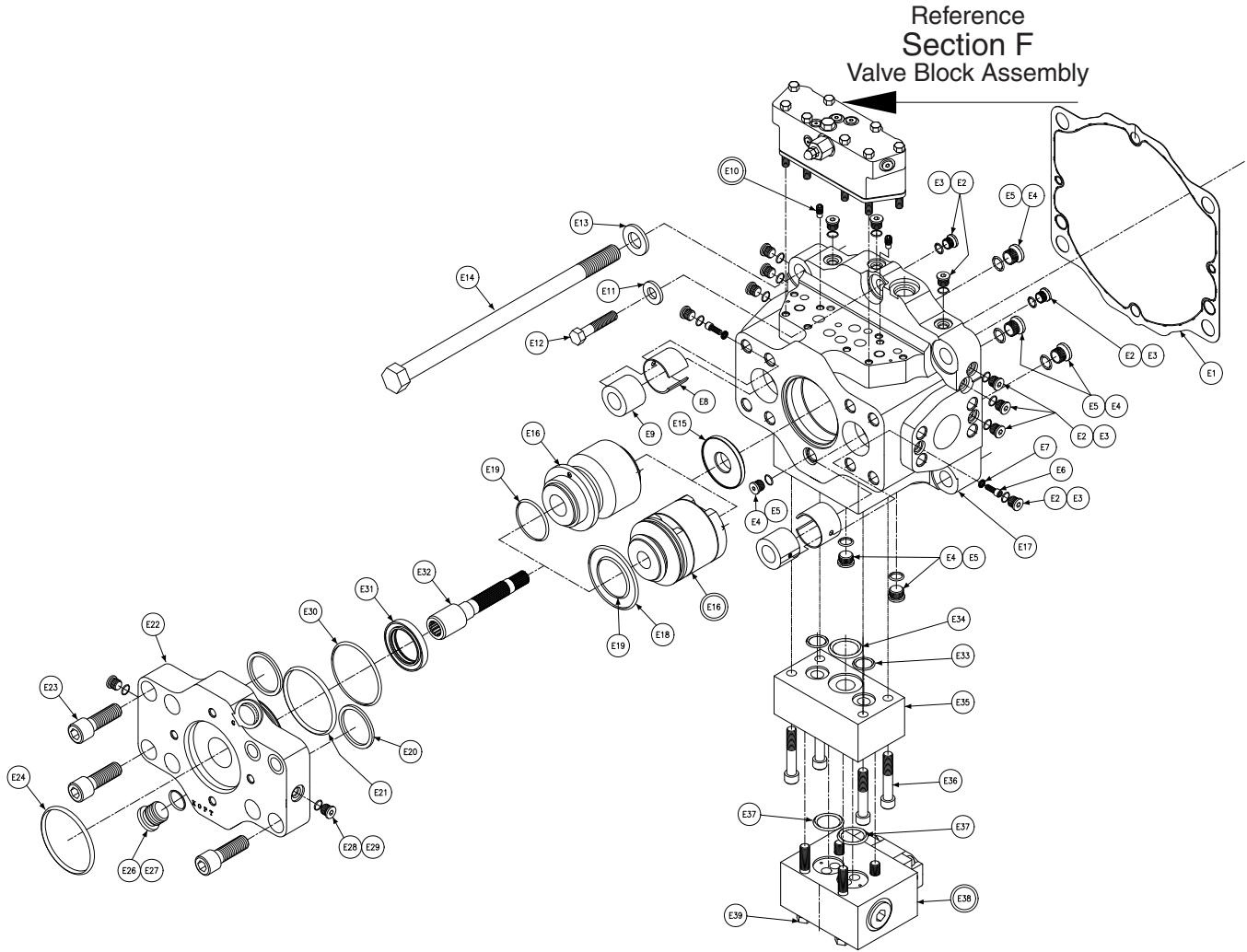
Continued on next page.



P24/30 PUMP TYPE P PORT BLOCK ASSEMBLY (CONTINUED)							
Balloon #	Displacement	Pump Type	Rotation	Seal Code	Item #	Description	Qty
E16	P24/30	P24/30 P	CW	**	S24-11918-0	Vane Pump, Cart. Assy' 2.81CIPR	1
		P24/30 P	CCW	**	S24-05562-0		
		P24/30 P	CW	**	S24-11789-0		
		P24/30 P	CCW	**	S24-51206-0	Vane Pump, Cart. Assy' 1.64 CIPR	
		P24/30 P	CW	**	S24-11697-0		
		P24/30 P	CCW	**	S24-11778-0	Vane Pump, Cart. Assy' 1.05 CIPR	
		P24/30 P	CW	**	S24-05342-0	Vane Pump, Cart. Assy' 3.56 CIPR	
		P24/30 P	CCW	**	S24-05563-0		
		P24/30 P	CW	**	S24-05509-0	Vane Pump, Cart. Assy' 4.84 CIPR	
		P24/30 P	CCW	**	S24-05510-0	Vane Pump, Cart. Assy' 5.42 CIPR	
		P24/30 P	CW	**	S24-63562-0		
		P24/30 P	CCW	**	S24-44844-0	Vane Pump, Cart. Assy' 6.10 CIPR	
		P24/30 P	CW	**	S24-63563-0	Vane Pump, Cart. Assy' 6.10 CIPR	
P24/30 P	CCW	**	S24-63564-0				
P24/30 P	**	**	S23-15102-0	Blank, Cart assy,			
E17	P24/30	P24/30 P	**	**	033-91564-0	Port block	1
E18	P24/30	P24/30 P	**	1	691-00238-0	Gasket O-ring	1
	P24/30	P24/30 P	**	4	694-00238-0		
	P24/30	P24/30 P	**	5	695-00238-0		
E19	P24/30	P24/30 P	**	1	691-10229-0	Gasket, Tetraseal	1
	P24/30	P24/30 P	**	4	694-10229-0		
	P24/30	P24/30 P	**	5	695-10229-0		
E20	P24/30	P24/30 P	**	1	691-10228-0	Gasket, Tetraseal	2
	P24/30	P24/30 P	**	4	694-10228-0		
	P24/30	P24/30 P	**	5	695-10228-0		
E21	P24/30	P24/30 P	**	1	671-00242-0	Gasket O-ring	1
	P24/30	P24/30 P	**	4	674-00242-0		
	P24/30	P24/30 P	**	5	675-00242-0		
E22	P24/30	P24/30 P	**	**	033-91566-0	Cover, Rear	1
E23	P24/30	P24/30 P	**	**	358-26240-0	Screw, SHC 3/4-10 X 2	8
E24	P24/30	P24/30 P	**	1	691-00932-0	Gasket O-ring	1
	P24/30	P24/30 P	**	4	694-00932-0		
	P24/30	P24/30 P	**	5	695-00932-0		
E25	P24/30	P24/30 P	**	**	488-35059-0	Plug	1
E26	P24/30	P24/30 P	**	1	691-00916-0	Gasket O-ring	1
	P24/30	P24/30 P	**	4	694-00916-0		
	P24/30	P24/30 P	**	5	695-00916-0		
E27	P24/30	P24/30 P	**	**	488-35024-0	Plug	1
E28	P24/30	P24/30 P	**	1	691-00906-0	Gasket O-ring	1
	P24/30	P24/30 P	**	4	674-00906-0		
	P24/30	P24/30 P	**	5	695-00906-0		
E29	P24/30	P24/30 P	**	**	488-35041-0	Plug, 6HP5N	2
E30	P24/30	P24/30 P	**	1	691-00238-0	Gasket O-ring	1
	P24/30	P24/30 P	**	4	694-00238-0		
	P24/30	P24/30 P	**	5	695-00238-0		

<b>Rear Cover Kit</b>				
<b>Composed of Items:</b>				
<b>E20 thru E30, &amp; Part number Auxiliary shaft 033-57257-0 FOR P24 TYPE "P" PUMPS-</b>				
<b>E20 thru E30, &amp; Part number Auxiliary shaft 033-91188-0 FOR P30 TYPE "P" PUMPS-</b>				
<b>Displacement</b>	<b>Model Type</b>	<b>Rotation</b>	<b>Part Number</b>	
P24	P	**	S23-15182-0	
P30	P	**	S23-15122-0	





Section E							
P24/30 PUMP TYPE S PORT BLOCK ASSEMBLY							
Balloon #	Displacement	Pump Type	Rotation	Seal Code	Item #	Description	Qty
E1	P24/30	P24/30 S	**	**	033-91085-0	Gasket, Port Block/Housing	1
E2	P24/30	P24/30 S	**	**	488-35041-0	Plug, 6HP5N	13
E3	P24/30	P24/30 S	**	1	691-00906-0	Gasket O-ring	13
	P24/30	P24/30 S	**	4	674-00906-0		
	P24/30	P24/30 S	**	5	695-00906-0		
E4	P24/30	P24/30 S	**	**	488-35018-0	Plug, 8HP5N	3
E5	P24/30	P24/30 S	**	1	691-00908-0	Gasket O-ring	3
	P24/30	P24/30 S	**	4	694-00908-0		
	P24/30	P24/30 S	**	5	695-00908-0		
E6	P24/30	P24/30 S	**	**	359-11140-0	Screw, SHC	2
E7	P24/30	P24/30 S	**	**	350-10168-0	Washer, LOC	2
E8	P24/30	P24/30 S	**	**	035-72355-0	Ring check, P24/30	2
E9	P24/30	P24/30 S	**	**	033-94747-0	Stop, Ring Check	2
E10	P24/30	P24/30 S	**	**	S13-40266-0	Check valve assembly	2
E11	P24/30	P24/30 S	**	**	350-10136-0	Washer, 5/8	2
E12	P24/30	P24/30 S	**	**	306-40008-0	Screw, HHC 5/8-11UNC	2
E13	P24/30	P24/30 S	**	**	350-10135-0	Washer, 7/8	4
E14	P24	P24/30 S	**	**	306-40221-0	Screw, HHC 7/8-9UNC X 13	4
	P30	P24/30 S	**	**	306-40230-0	Screw, HHC 7/8-9UNC X 14	
E15	P24/30	P24/30 S	**	**	033-91073-0	Washer, Sealing	1
E16	P24/30	P24/30 S	CW	**	S24-11918-0	Vane Pump, Cart. Assy' 2.81 CIPR	1
		P24/30 S	CCW	**	S24-05562-0		
		P24/30 S	CW	**	S24-11789-0		
		P24/30 S	CCW	**	S24-51206-0		
		P24/30 S	CW	**	S24-11697-0		
		P24/30 S	CCW	**	S24-11778-0		
		P24/30 S	CW	**	S24-05342-0		
		P24/30 S	CCW	**	S24-05563-0		
		P24/30 S	CW	**	S24-05509-0		
		P24/30 S	CCW	**	S24-05510-0		
		P24/30 S	CW	**	S24-63562-0		
		P24/30 S	CCW	**	S24-44844-0		
		P24/30 S	CW	**	S24-63563-0		
P24/30 S	CCW	**	S24-63564-0				
E17	P24/30	P24/30 S	**	**	S23-15102-0	Blank, Cart assy,	1
E18	P24/30	P24/30 S	**	**	033-91604-0	Port block	1
	P24/30	P24/30 S	**	1	691-00238-0		
	P24/30	P24/30 S	**	4	694-00238-0		
E19	P24/30	P24/30 S	**	5	695-00238-0	Gasket O-ring	1
	P24/30	P24/30 S	**	1	691-10229-0		
	P24/30	P24/30 S	**	4	694-10229-0		
E20	P24/30	P24/30 S	**	5	695-10229-0	Gasket, Tetraseal	1
	P24/30	P24/30 S	**	1	691-10228-0		
	P24/30	P24/30 S	**	4	694-10228-0		
E21	P24/30	P24/30 S	**	5	695-10228-0	Gasket, Tetraseal	2
	P24/30	P24/30 S	**	1	671-00242-0		
	P24/30	P24/30 S	**	4	674-00242-0		
E22	P24/30	P24/30 S	**	5	675-00242-0	Gasket O-ring	1
	P24/30	P24/30 S	**	**	033-91605-0		
	P24/30	P24/30 S	**	**	033-91624-0		
E23	P24/30	P24/30 S	**	**	358-26240-0	Screw, SHC 3/4-10 X 2	8
E24	P24/30	P24/30 S	**	1	671-00159-0	Gasket O-ring	1
	P24/30	P24/30 S	**	4	674-00159-0		
	P24/30	P24/30 S	**	5	675-00159-0		
E26	P24/30	P24/30 S	**	1	691-00916-0	Gasket O-ring	1
	P24/30	P24/30 S	**	4	694-00916-0		
	P24/30	P24/30 S	**	5	695-00916-0		
E27	P24/30	P24/30 S	**	**	488-35024-0	Plug	1

Continued on next page.





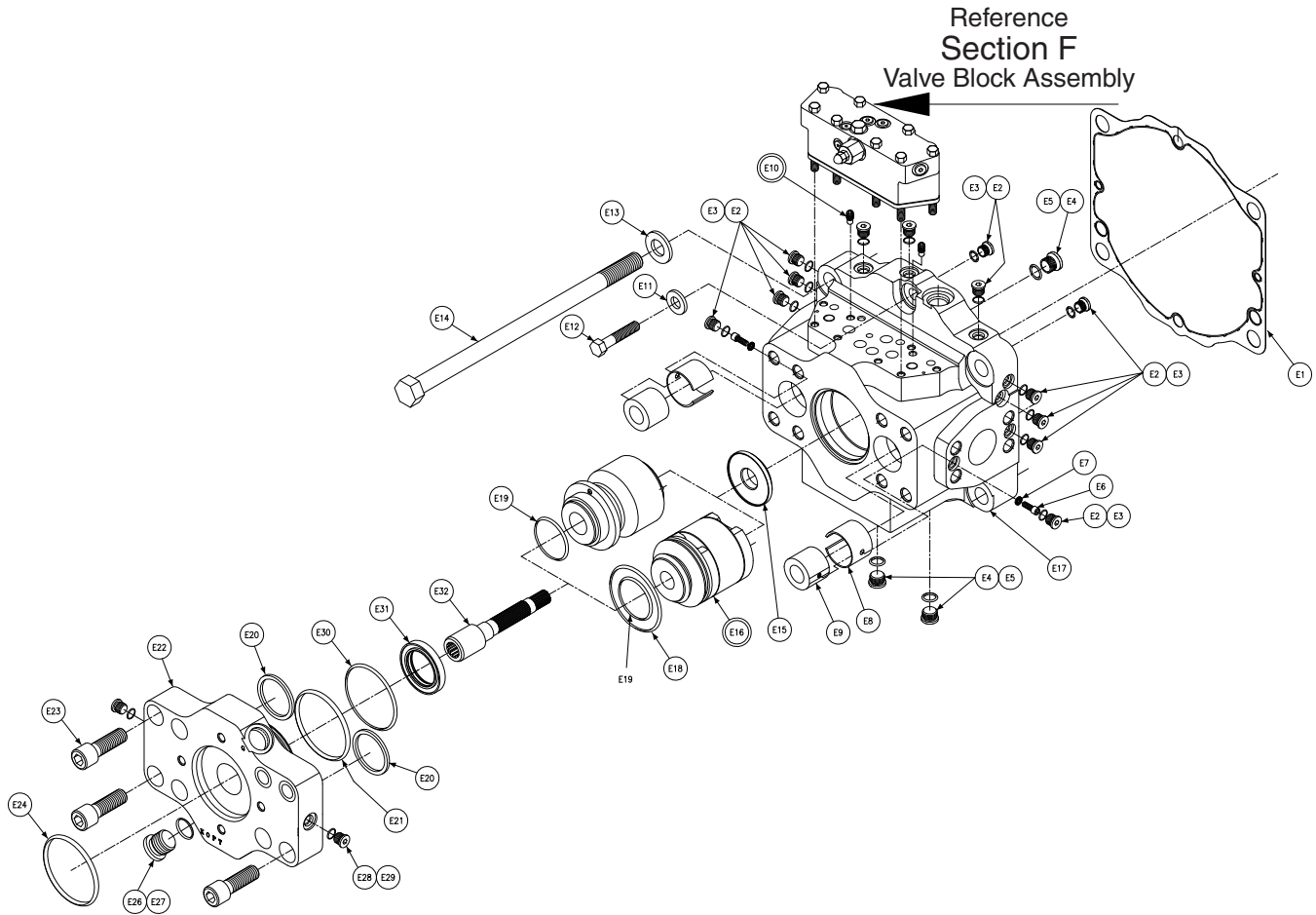
P24/30 PUMP TYPE S PORT BLOCK ASSEMBLY (CONTINUED)							
Balloon #	Displacement	Pump Type	Rotation	Seal Code	Item #	Description	Qty
E28	P24/30	P24/30 S	**	1	691-00906-0	Gasket O-ring	1
	P24/30	P24/30 S	**	4	674-00906-0		
	P24/30	P24/30 S	**	5	695-00906-0		
E29	P24/30	P24/30 S	**	**	488-35041-0	Plug, 6HP5N	2
E30	P24/30	P24/30 S	**	1	691-00238-0	Gasket O-ring	1
	P24/30	P24/30 S	**	4	694-00238-0		
	P24/30	P24/30 S	**	5	695-00238-0		
E31	P24/30	P24/30 S	**	**	620-82066-0	Seal, Rear SAE "B" EXT Mount	1
	P24/30	P24/30 S	**	**	620-82069-0	Seal, Rear SAE "C" EXT Mount	
E32	P24/30	P24/30 S	**	**	033-93537-0	Coupling, Shaft Rear SAE "B" EXT Mount	1
	P24/30	P24/30 S	**	**	033-93538-0	Coupling, Shaft Rear SAE "C" EXT Mount	
E33	P24/30	P24/30 S	**	1	691-10214-0	Gasket, Tetraseal	2
	P24/30	P24/30 S	**	4	694-10214-0		
	P24/30	P24/30 S	**	5	695-10214-0		
E34	P24/30	P24/30 S	**	1	671-00223-0	Gasket O-ring	1
	P24/30	P24/30 S	**	4	674-00223-0		
	P24/30	P24/30 S	**	5	675-00223-0		
E35	P24/30	P24/30 S	**	**	033-57188-0	Adaptor, Shuttle	1
E36	P24/30	P24/30 S	**	**	358-20280-0	Screw, SHC 1/2-13 UNC X	4
E37	P24/30	P24/30 S	**	1	691-10221-0	Gasket, Tetraseal	2
	P24/30	P24/30 S	**	4	694-10221-0		
	P24/30	P24/30 S	**	5	695-10221-0		
E38	P24/30	P24/30 S	**	1	080030100001	Shuttle, EXT. Pilot Drain	1
	P24/30	P24/30 S	**	5	080030100002	Shuttle, EXT. Pilot Drain	
E39	P24/30	P24/P30 L	**	**	306-40224-0	Screw, HHC 1/2-13 UNC X 3 1/2	4

Rear Cover Kit				
Composed of Items:				
E20 thru E32, & Part number Auxiliary shaft 033-91535-0 FOR P24 TYPE "S" PUMPS				
E20 thru E32, & Part number Auxiliary shaft 033-91536-0 FOR P30 TYPE "S" PUMPS				
Displacement	Model Type	Rotation	Part Number	
P24	P24S	**	S23-15183-0	SAE "B" EXT MOUNT
P24	P24S	**	S23-17172-0	SAE "C" EXT MOUNT
P30	P30S	**	S23-15125-0	SAE "B" EXT MOUNT
P30	P30S	**	S23-17546-0	SAE "C" EXT MOUNT









Section E							
P24/30 PUMP TYPE X PORT BLOCK ASSEMBLY							
Balloon #	Displacement	Pump Type	Rotation	Seal Code	Item #	Description	Qty
E1	P24/30	P24/30 X	**	**	033-91085-0	Gasket, Port Block/Housing	1
E2	P24/30	P24/30 X	**	**	488-35041-0	Plug, 6HP5N	13
E3	P24/30	P24/30 X	**	1	691-00906-0	Gasket O-ring	13
	P24/30	P24/30 X	**	4	674-00906-0		
	P24/30	P24/30 X	**	5	695-00906-0		
E4	P24/30	P24/30 X	**	**	488-35018-0	Plug, 8HP5N	3
	P24/30	P24/30 X	**	1	691-00908-0		
E5	P24/30	P24/30 X	**	4	694-00908-0	Gasket O-ring	3
	P24/30	P24/30 X	**	5	695-00908-0		
	P24/30	P24/30 X	**	**	359-11140-0		
E6	P24/30	P24/30 X	**	**	359-11140-0	Screw, SHC	2
E7	P24/30	P24/30 X	**	**	350-10168-0	Washer, LOC	2
E8	P24/30	P24/30 X	**	**	035-72355-0	Ring check, P24/30	2
E9	P24/30	P24/30 X	**	**	033-94747-0	Stop, Ring Check	2
E10	P24/30	P24/30 X	**	**	S13-40266-0	Check valve assembly	2
E11	P24/30	P24/30 X	**	**	350-10136-0	Washer, 5/8	2
E12	P24/30	P24/30 X	**	**	306-40008-0	Screw, HHC 5/8-11UNC	2
						Washer, 7/8	4
E13	P24/30	P24/30 X	**	**	350-10135-0	Washer, 7/8	4
						Screw, HHC 7/8-9UNC X 13	4
E14	P30	P24/30 X	**	**	306-40230-0	Screw, HHC 7/8-9UNC X 14	
						Washer, Sealing	1
E15	P24/30	P24/30 X	**	**	033-91073-0	Washer, Sealing	1

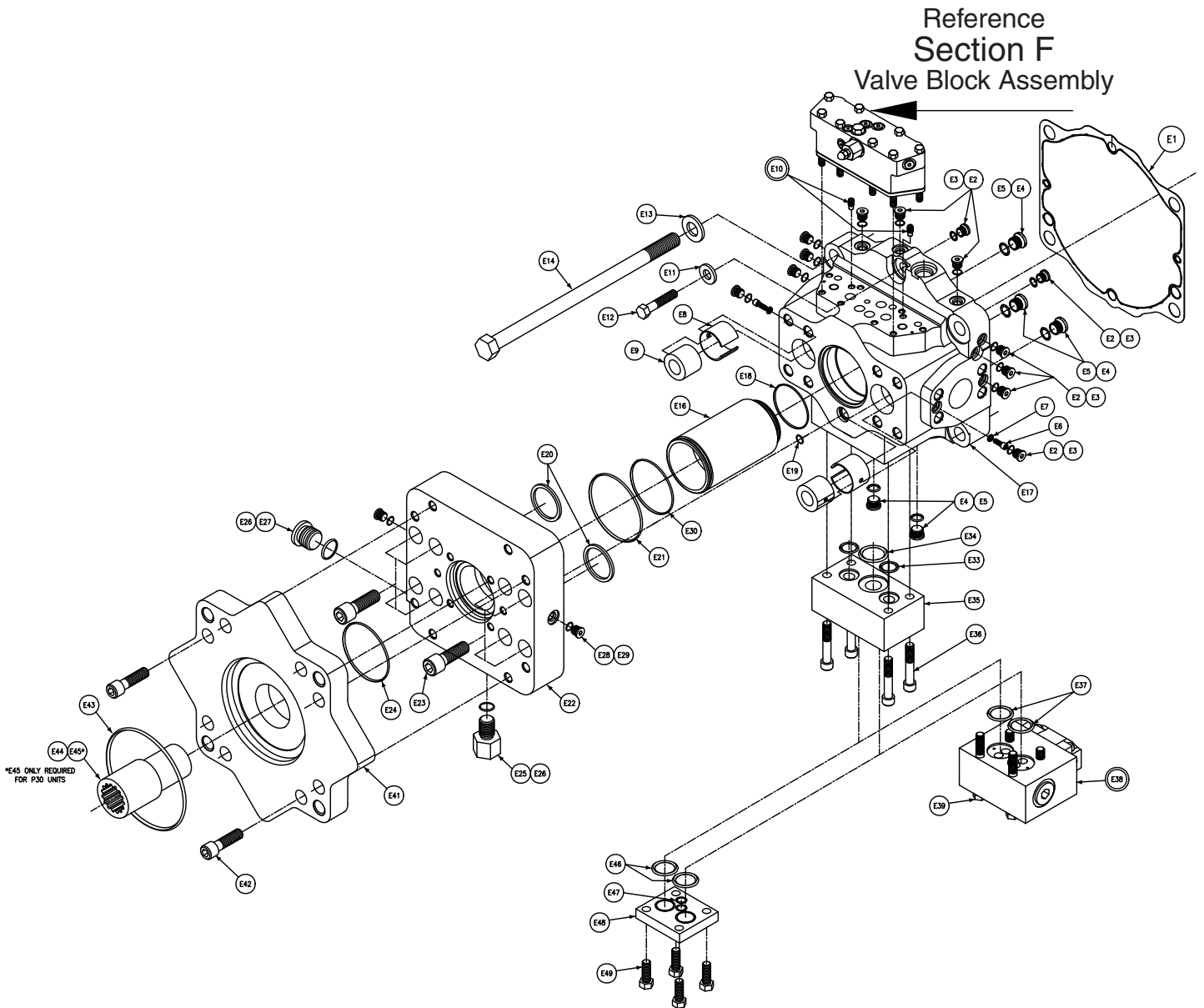
Continued on next page.



P24/30 PUMP TYPE X PORT BLOCK ASSEMBLY (CONTINUED)								
Balloon #	Displacement	Pump Type	Rotation	Seal Code	Item #	Description	Qty	
E16	P24/30	P24/30 X	CW	**	S24-11918-0	Vane Pump, Cart. Assy' 2.81CIPR	1	
		P24/30 X	CCW	**	S24-05562-0			
		P24/30 X	CW	**	S24-11789-0			Vane Pump, Cart. Assy' 1.64 CIPR
		P24/30 X	CCW	**	S24-51206-0			
		P24/30 X	CW	**	S24-11697-0			Vane Pump, Cart. Assy' 1.05 CIPR
		P24/30 X	CCW	**	S24-11778-0			
		P24/30 X	CW	**	S24-05342-0			Vane Pump, Cart. Assy' 3.56 CIPR
		P24/30 X	CCW	**	S24-05563-0			
		P24/30 X	CW	**	S24-05509-0			Vane Pump, Cart. Assy' 4.84 CIPR
		P24/30 X	CCW	**	S24-05510-0			
		P24/30 X	CW	**	S24-63562-0			Vane Pump, Cart. Assy' 5.42 CIPR
		P24/30 X	CCW	**	S24-44844-0			
		P24/30 X	CW	**	S24-63563-0			Vane Pump, Cart. Assy' 6.10 CIPR
		P24/30 X	**	**	S23-15102-0	Blank, Cart assy,		
E17	P24/30	P24/30 X	**	**	033-91564-0	Port block	1	
E18	P24/30	P24/30 X	**	1	691-00238-0	Gasket O-ring	1	
	P24/30	P24/30 X	**	4	694-00238-0			
	P24/30	P24/30 X	**	5	695-00238-0			
E19	P24/30	P24/30 X	**	1	691-10229-0	Gasket, Tetraseal	1	
	P24/30	P24/30 X	**	4	694-10229-0			
	P24/30	P24/30 X	**	5	695-10229-0			
E20	P24/30	P24/30 X	**	1	691-10228-0	Gasket, Tetraseal	2	
	P24/30	P24/30 X	**	4	694-10228-0			
	P24/30	P24/30 X	**	5	695-10228-0			
E21	P24/30	P24/30 X	**	1	671-00242-0	Gasket O-ring	1	
	P24/30	P24/30 X	**	4	674-00242-0			
	P24/30	P24/30 X	**	5	675-00242-0			
E22	P24/30	P24/30 X	**	**	033-91605-0	Cover, Rear SAE "B" EXT Mount	1	
	P24/30	P24/30 X	**	**	033-91624-0	Cover, Rear SAE "C" EXT Mount		
E23	P24/30	P24/30 X	**	**	358-26240-0	Screw, SHC 3/4-10 X 2	8	
E24	P24/30	P24/30 S	**	1	671-00159-0	Gasket O-ring	1	
	P24/30	P24/30 S	**	4	674-00159-0			
	P24/30	P24/30 S	**	5	675-00159-0			
E26	P24/30	P24/30 X	**	1	691-00916-0	Gasket O-ring	1	
	P24/30	P24/30 X	**	4	694-00916-0			
	P24/30	P24/30 X	**	5	695-00916-0			
E27	P24/30	P24/30 X	**	**	488-35024-0	Plug	1	
E28	P24/30	P24/30 X	**	1	691-00906-0	Gasket O-ring	1	
	P24/30	P24/30 X	**	4	674-00906-0			
	P24/30	P24/30 X	**	5	695-00906-0			
E29	P24/30	P24/30 X	**	**	488-35041-0	Plug, 6HP5N	2	
E30	P24/30	P24/30 X	**	1	691-00238-0	Gasket O-ring	1	
	P24/30	P24/30 X	**	4	694-00238-0			
	P24/30	P24/30 X	**	5	695-00238-0			
E31	P24/30	P24/30 X	**	**	620-82066-0	Seal, Rear SAE "B" EXT Mount	1	
	P24/30	P24/30 X	**	**	620-82069-0	Seal, Rear SAE "C" EXT Mount		
E32	P24/30	P24/30 X	**	**	033-93537-0	Coupling, Shaft Rear SAE "B" EXT Mount	1	
	P24/30	P24/30 X	**	**	033-93538-0	Coupling, Shaft Rear SAE "C" EXT Mount		

<b>Rear Cover Kit</b>				
<b>Composed of Items:</b>				
<b>E20 thru E32, &amp; Part number Auxiliary shaft 033-91535-0 FOR P24 TYPE "X" PUMPS</b>				
<b>E20 thru E32, &amp; Part number Auxiliary shaft 033-91536-0 FOR P30 TYPE "X" PUMPS</b>				
Displacement	Model Type	Rotation	Part Number	
P24	P24X	**	S23-15183-0	SAE "B" EXT MOUNT
P24	P24X	**	S23-17172-0	SAE "C" EXT MOUNT
P30	P30X	**	<b>S23-15125-0</b>	<b>SAE "B" EXT MOUNT</b>
P30	P30X	**	S23-17546-0	SAE "C" EXT MOUNT





Section E							
P24/30 PUMP TYPE R & L PORT BLOCK ASSEMBLY							
Balloon #	Displacement	Pump Type	Rotation	Seal Code	Item #	Description	Qty
E1	P24/30	P24/P30 R/L	**	**	033-91085-0	Gasket, Port Block/Housing	1
E2	P24/30	P24/P30 R/L	**	**	488-35041-0	Plug, 6HP5N	13
E3	P24/30	P24/P30 R/L	**	1	691-00906-0	Gasket O-ring	13
	P24/30	P24/P30 R/L	**	4	674-00906-0		
	P24/30	P24/P30 R/L	**	5	695-00906-0		
E4	P24/30	P24/P30 R/L	**	**	488-35018-0	Plug, 8HP5N	5
E5	P24/30	P24/P30 R/L	**	1	691-00908-0	Gasket O-ring	5
	P24/30	P24/P30 R/L	**	4	694-00908-0		
	P24/30	P24/P30 R/L	**	5	695-00908-0		
E6	P24/30	P24/P30 R/L	**	**	359-11140-0	Screw, SHC	2

Continued on next page.



## Section View - E - Pump Type - R &amp; L - Port Block Assembly Spare Parts and Exploded Views

P24/30 PUMP TYPE R & L PORT BLOCK ASSEMBLY (CONTINUED)							
Balloon #	Displacement	Pump Type	Rotation	Seal Code	Item #	Description	Qty
E7	P24/30	P24/P30 R/L	**	**	350-10168-0	Washer, LOC	2
E8	P24/30	P24/P30 R/L	**	**	035-72355-0	Ring check, P24/30	2
E9	P24/30	P24/P30 R/L	**	**	033-94747-0	Stop, Ring Check	2
E10	P24/30	P24/P30 R/L	**	**	S13-40266-0	Check valve assembly	2
E11	P24/30	P24/P30 R/L	**	**	350-10136-0	Washer, 5/8	2
E12	P24/30	P24/P30 R/L	**	**	306-40008-0	Screw, HHC 5/8-11UNC	2
E13	P24/30	P24/P30 R/L	**	**	350-10135-0	Washer, 7/8	4
E14	P24	P24 R/L	**	**	306-40221-0	Screw, HHC 7/8-9UNC X 13	4
	P30	P30 R/L	**	**	306-40230-0	Screw, HHC 7/8-9UNC X 14	
E15	P24/30	P24/P30 R/L				Not Used	Not Used
E16	P24/30	P24/P30 R/L	**	**	033-92816-0	Sleeve, Replen Isolation	1
E17	P24/30	P24/P30 R/L	**	**	033-91604-0	Block, Port	1
E18	P24/30	P24/P30 R/L	**	1	671-00233-0	Gasket O-ring	1
	P24/30	P24/P30 R/L	**	4	674-00233-0		
	P24/30	P24/P30 R/L	**	5	675-00233-0		
E19	P24/30	P24/P30 R/L	**	1	671-00122-0	Gasket O-ring	1
	P24/30	P24/P30 R/L	**	4	674-00122-0		
	P24/30	P24/P30 R/L	**	5	675-00122-0		
E20	P24/30	P24/P30 R/L	**	1	671-10228-0	Gasket, Tetraseal	2
	P24/30	P24/P30 R/L	**	4	674-10228-0		
	P24/30	P24/P30 R/L	**	5	675-10228-0		
E21	P24/30	P24/P30 R/L	**	1	671-00242-0	Gasket O-ring	1
	P24/30	P24/P30 R/L	**	4	674-00242-0		
	P24/30	P24/P30 R/L	**	5	675-00242-0		
E22	P24/30	P24/P30 R/L	**	**	033-92814-0	Adaptor, Rear Drive	1
E23	P24/30	P24/P30 R/L	**	**	358-26280-0	Screw, SHC 3/4-10 X 2 1/2	8
E24	P24/30	P24/P30 R/L	**	1	671-00155-0	Gasket O-ring	1
	P24/30	P24/P30 R/L	**	4	674-00155-0		
	P24/30	P24/P30 R/L	**	5	675-00155-0		
E25	P24/30	P24/P30 R/L	**	**	033-93464-0	Plug, Special	1
E26	P24/30	P24/P30 R/L	**	1	691-00916-0	Gasket O-ring	2
	P24/30	P24/P30 R/L	**	4	694-00916-0		
	P24/30	P24/P30 R/L	**	5	695-00916-0		
E27	P24/30	P24/P30 R/L	**	**	488-35024-0	Plug	1
E28	P24/30	P24/P30 R/L	**	1	691-00906-0	Gasket O-ring	2
	P24/30	P24/P30 R/L	**	4	674-00906-0		
	P24/30	P24/P30 R/L	**	5	695-00906-0		
E29	P24/30	P24/P30 R/L	**	**	488-35041-0	Plug, 6HP5N	2
E30	P24/30	P24/P30 R/L	**	1	671-00238-0	Gasket O-ring	1
	P24/30	P24/P30 R/L	**	4	674-00238-0		
	P24/30	P24/P30 R/L	**	5	675-00238-0		
E33	P24/30	P24/P30 R/L	**	1	691-10214-0	Gasket, Tetraseal	2
	P24/30	P24/P30 R/L	**	4	694-10214-0		
	P24/30	P24/P30 R/L	**	5	695-10214-0		
E34	P24/30	P24/P30 R/L	**	1	671-00223-0	Gasket O-ring	1
	P24/30	P24/P30 R/L	**	4	674-00223-0		
	P24/30	P24/P30 R/L	**	5	675-00223-0		
E35	P24/30	P24/P30 R/L	**	**	033-57188-0	Adaptor, Shuttle	1
E36	P24/30	P24/P30 R/L	**	**	358-20280-0	Screw, SHC 1/2-13 UNC X 2 1/2	4
E37	P24/30	P24/P30 L	**	1	691-10221-0	Gasket, Tetraseal	2
	P24/30	P24/P30 L	**	4	694-10221-0		
	P24/30	P24/P30 L	**	5	695-10221-0		
E38	P24/30	P24/P30 L	**	1	080030100001	Shuttle, EXT. Pilot Drain	1
	P24/30	P24/P30 L	**	5	080030100002	Shuttle, EXT. Pilot Drain	
E39	P24/30	P24/P30 L	**	**	306-40224-0	Screw, HHC 1/2-13 UNC X 3 1/2	4
E41	P24/30	P24/P30 R/L	**	**	033-92827-0	Adaptor, Rear SAE "C" EXT Mount	1
	P24/30	P24/P30 R/L	**	**	033-92828-0	Adaptor, Rear SAE "D" EXT Mount	
	P24/30	P24/P30 R/L	**	**	033-92823-0	Adaptor, Rear SAE "E" EXT Mount	
	P24/30	P24/P30 R/L	**	**	033-92824-0	Adaptor, Rear SAE "F" EXT Mount	
E42	P24/30	P24/P30 R/L	**	**	358-24240-0	Screw, SHC 5/8-11 UNC X 2	4

Continued on next page.



Section View - E - Pump Type - R & L - Port Block Assembly Spare Parts and Exploded Views

P24/30 PUMP TYPE R & L PORT BLOCK ASSEMBLY (CONTINUED)							
Balloon #	Displacement	Pump Type	Rotation	Seal Code	Item #	Description	Qty
E43	P24/30	P24/P30 R/L	**	1	671-00159-0	Gasket, O'ring SAE "C" EXT Mount	1
	P24/30	P24/P30 R/L	**	4	674-00159-0		
	P24/30	P24/P30 R/L	**	5	675-00159-0		
	P24/30	P24/P30 R/L	**	1	671-00163-0		
	P24/30	P24/P30 R/L	**	4	674-00163-0	Gasket, O'ring SAE "D" EXT Mount	
	P24/30	P24/P30 R/L	**	5	675-00163-0		
	P24/30	P24/P30 R/L	**	1	671-00165-0	Gasket, O'ring SAE "E" EXT Mount	
	P24/30	P24/P30 R/L	**	4	674-00165-0		
	P24/30	P24/P30 R/L	**	5	675-00165-0		
	P24/30	P24/P30 R/L	**	1	671-00262-0	Gasket, O'ring SAE "E" EXT Mount	
P24/30	P24/P30 R/L	**	4	674-00262-0			
P24/30	P24/P30 R/L	**	5	675-00262-0			
E44	P24/30	P24/P30 R/L	**	**	033-92835-0	Coupling, Rear SAE "C" EXT Mount	1
			**	**	033-92836-0	Coupling, Rear SAE "D" EXT Mount	
			**	**	033-92836-0	Coupling, Rear SAE "E" EXT Mount	
			**	**	033-92778-0	Coupling, Rear SAE "F" EXT Mount	
E45	P30	P30 R/L	Req'd for P30 only	**	356-30156-0	Retaining Ring, Coupling SAE "D" EXT Mount	1
				**		Retaining Ring, Coupling SAE "D" EXT Mount	
				**		Retaining Ring, Coupling SAE "E" EXT Mount	
				**		Retaining Ring, Coupling SAE "F" EXT Mount	
E46	P24/30	P24/P30 R	**	1	691-00024-0	Gasket O-ring	2
			**	4	694-00024-0		
			**	5	695-00024-0		
E47	P24/30	P24/P30 R	**	1	691-00015-0	Gasket O-ring	1
			**	4	694-00015-0		
			**	5	695-00015-0		
E48	P24/30	P24/P30 R	**	**	033-57642-0	Cover, Blank - Shuttle Pad	1
E49	P24/30	P24/P30 R	**	**	306-40080-0	Screw, HHC 1/2-13 UNC X 1 1/4	4

Kit, Rear Adaptor Mounting				
Composed of Items:				
41, 42, 43, 44, & 45 as applicable				
Displacement	Model Type	Rotation	Part Number	
P24	P24R/L	**	S23-16340-0	SAE "C" EXT MOUNT
	P24R/L	**	S23-16341-0	SAE "D" EXT MOUNT
	<b>P24R/L</b>	**	<b>S23-16342-0</b>	<b>SAE "E" EXT MOUNT</b>
	P24R/L	**	S23-16343-0	SAE "F" EXT MOUNT
P30	P30R/L	**	S23-16351-0	SAE "C" EXT MOUNT
	P30R/L	**	S23-16352-0	SAE "D" EXT MOUNT
	<b>P30R/L</b>	**	<b>S23-16353-0</b>	<b>SAE "E" EXT MOUNT</b>
	P30R/L	**	S23-16354-0	SAE "F" EXT MOUNT

Kit, Shuttle Assembly				
Composed of Items: E37, E38, & E39 as applicable				
Displacement	Model Type	Seal Code	Part Number	
P24/30	P24/P30 L	1	080030100001	Shuttle, EXT. Pilot Drain
P24/30	P24/P30 L	5	080030100002	Shuttle, EXT. Pilot Drain



**Notes**

---

---

---

---

---

---

---

---

---

---

---

---

---

---

---

---

---

---

---

---

---

---

---

---

---

---

---

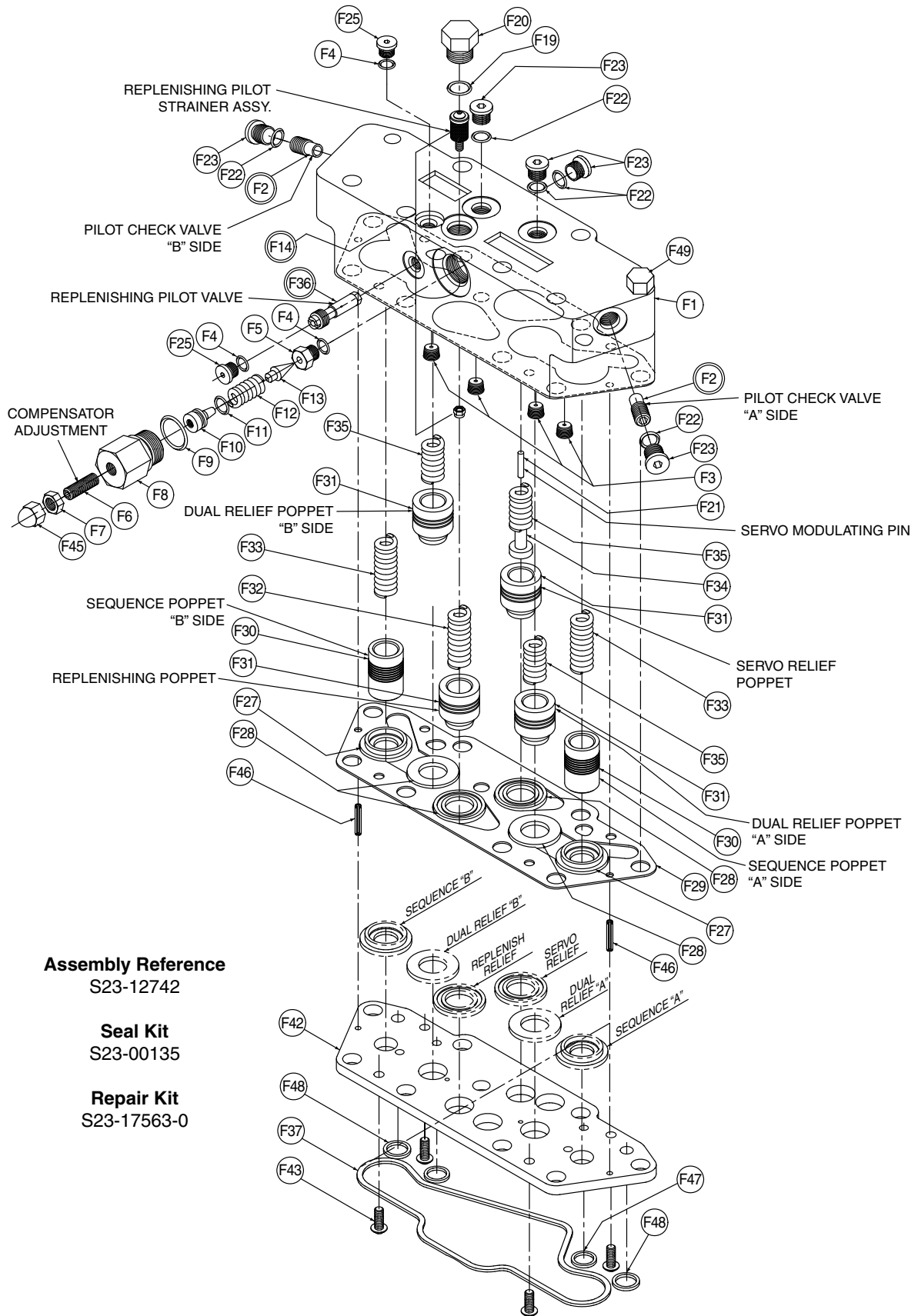
---

---

---







**Assembly Reference**  
S23-12742

**Seal Kit**  
S23-00135

**Repair Kit**  
S23-17563-0



Section F						
Valve Block Assembly (Reference P/N S23 -12742, P24 Pumps), & ( S23 -12795 P30 Pumps)						
Balloon #	Displacement	Pump Type	Seal Code	Item #	Description	Qty
F1	P24	P24P/S/X/R/L	**	033-91221-0	Valve Body	1
	P30	P30P/S/X/R/L	**	033-91334-0		
F2	P24/P30	P24/P30 P/S/X/R/L	**	S13-40266-0	Valve check	2
F3	P24/P30	P24/P30 P/S/X/R/L	**	033-91249-0	Orifice, Plug 1/8 NPTF Flush .046 dia.	4
F4	P24/P30	P24/P30 P/S/X/R/L	1	691-00903-0	Gasket, O-ring	3
	P24/P30	P24/P30 P/S/X/R/L	4	694-00903-0		
	P24/P30	P24/P30 P/S/X/R/L	5	695-00903-0		
F5	P24/P30	P24/P30 P/S/X/R/L	**	033-70508-0	Seat, Pilot stage	1
F6	P24/P30	P24/P30 P/S/X/R/L	**	312-13160-0	Screw, SOCHD 5/16-24 UNF X 1	1
F7	P24/P30	P24/P30 P/S/X/R/L	**	335-13100-0	Nut, Hex Jam 5/16-24 UNF	1
F8	P24/P30	P24/P30 P/S/X/R/L	**	033-70545-0	Housing, Guide	1
F9	P24/P30	P24/P30 P/S/X/R/L	1	691-00910-0	Gasket, O-ring	1
	P24/P30	P24/P30 P/S/X/R/L	4	694-00910-0		
	P24/P30	P24/P30 P/S/X/R/L	5	695-00910-0		
F10	P24/P30	P24/P30 P/S/X/R/L	**	036-21767-0	Piston, Seal	1
F11	P24/P30	P24/P30 P/S/X/R/L	1	691-00012-0	Gasket, O-ring	1
	P24/P30	P24/P30 P/S/X/R/L	4	694-00012-0		
	P24/P30	P24/P30 P/S/X/R/L	5	695-00012-0		
F12	P24/P30	P24/P30 P/S/X/R/L	**	032-91798-0	Spring	1
F13	P24/P30	P24/P30 P/S/X/R/L	**	036-12288-0	Cone	1
F14	P24/P30	P24/P30 P/S/X/R/L	**	S23-43240-0	Assy, Repl Strainer	1
F19	P24/P30	P24/P30 P/S/X/R/L	1	691-00906-0	Gasket, O-ring	1
	P24/P30	P24/P30 P/S/X/R/L	4	694-00906-0		
	P24/P30	P24/P30 P/S/X/R/L	5	695-00906-0		
F20	P24/P30	P24/P30 P/S/X/R/L	**	488-35003-0	Plug, HHC	1
F21	P24	P24P/S/X/R/L	**	230-82226-0	Pin, Modulating 1/8 dia.X 5/8 Lg	1
	P30	P30P/S/X/R/L	**	033-92868-0	Pin, Modulating 5/32 dia.X 5/8 Lg	
F22	P24/P30	P24/P30 P/S/X/R/L	1	691-00906-0	Gasket, O-ring	5
	P24/P30	P24/P30 P/S/X/R/L	4	694-00906-0		
	P24/P30	P24/P30 P/S/X/R/L	5	695-00906-0		
F23	P24/P30	P24/P30 P/S/X/R/L	**	488-35001-0	Plug, SHC	5
F25	P24/P30	P24/P30 P/S/X/R/L	**	488-35049-0	Plug, SHC	2
F27	P24/P30	P24/P30 P/S/X/R/L	**	033-70507-0	Seat, Sequence	2
F28	P24/P30	P24/P30 P/S/X/R/L	**	033-70500-0	Seat, Repl & servo	4
F29	P24/P30	P24/P30 P/S/X/R/L	**	033-91193-0	Gasket, Valve Block	1
F30	P24/P30	P24/P30 P/S/X/R/L	**	033-72378-0	Poppet, Sequence	2
F31	P24/P30	P24/P30 P/S/X/R/L	**	033-72379-0	Poppet, Dual & Repl.	4
F32	P24/P30	P24/P30 P/S/X/R/L	**	033-22141-0	Spring, Repl.	1
F33	P24/P30	P24/P30 P/S/X/R/L	**	033-70512-0	Spring, Sequence	2
F34	P24/P30	P24/P30 P/S/X/R/L	**	033-70482-0	Spring, Retainer	1
F35	P24/P30	P24/P30 P/S/X/R/L	**	033-71086-0	Spring, Dual Relief	3
F36	P24/P30	P24/P30 P/S/X/R/L	**	S23-12814-0	Valve, Cartridge Repl Pilot	1
F37	P24/P30	P24/P30 P/S/X/R/L	1	671-00050-0	Gasket, O-ring	1
	P24/P30	P24/P30 P/S/X/R/L	4	674-00050-0		
	P24/P30	P24/P30 P/S/X/R/L	5	675-00050-0		
F42	P24/P30	P24/P30 P/S/X/R/L	**	033-91422-0	Plate, Retainer	1
F43	P24/P30	P24/P30 P/S/X/R/L	**	353-25078-0	Screw, Button Head	4
F45	P24/P30	P24/P30 P/S/X/R/L	**	327-25006-0	Nut, Acron	1
F46	P24/P30	P24/P30 P/S/X/R/L	**	325-08120-0	Pin, Spring	2
F47	P24/P30	P24/P30 P/S/X/R/L	1	671-00013-0	Gasket, O-ring	2
	P24/P30	P24/P30 P/S/X/R/L	4	674-00013-0		
	P24/P30	P24/P30 P/S/X/R/L	5	675-00013-0		
F48	P24/P30	P24/P30 P/S/X/R/L	1	671-00014-0	Gasket, O-ring	2
	P24/P30	P24/P30 P/S/X/R/L	4	674-00014-0		
	P24/P30	P24/P30 P/S/X/R/L	5	675-00014-0		
F49	P24/P30	P24/P30 P/S/X/R/L	**	306-40169-0	Screw, HHC 3/8-16 UNC X 3 1/4 Lg. Grade 8	8



The items described in this document and other documents and descriptions provided by Parker Hannifin Corporation, Hydraulics Group, and its authorized distributors ("Seller") are hereby offered for sale at prices to be established by Seller. This offer and its acceptance by any customer ("Buyer") shall be governed by all of the following Terms and Conditions. Buyer's order for any item described in its document, when communicated to Seller verbally, or in writing, shall constitute acceptance of this offer. All goods or work described will be referred to as "Products".

**1. Terms and Conditions.** Seller's willingness to offer Products, or accept an order for Products, to or from Buyer is expressly conditioned on Buyer's assent to these Terms and Conditions and to the terms and conditions found on-line at [www.parker.com/saleterms/](http://www.parker.com/saleterms/). Seller objects to any contrary or additional term or condition of Buyer's order or any other document issued by Buyer.

**2. Price Adjustments; Payments.** Prices stated on the reverse side or preceding pages of this document are valid for 30 days. After 30 days, Seller may change prices to reflect any increase in its costs resulting from state, federal or local legislation, price increases from its suppliers, or any change in the rate, charge, or classification of any carrier. The prices stated on the reverse or preceding pages of this document do not include any sales, use, or other taxes unless so stated specifically. Unless otherwise specified by Seller, all prices are F.O.B. Seller's facility, and payment is due 30 days from the date of invoice. After 30 days, Buyer shall pay interest on any unpaid invoices at the rate of 1.5% per month or the maximum allowable rate under applicable law.

**3. Delivery Dates; Title and Risk; Shipment.** All delivery dates are approximate and Seller shall not be responsible for any damages resulting from any delay. Regardless of the manner of shipment, title to any products and risk of loss or damage shall pass to Buyer upon tender to the carrier at Seller's facility (i.e., when it's on the truck, it's yours). Unless otherwise stated, Seller may exercise its judgment in choosing the carrier and means of delivery. No deferral of shipment at Buyer's request beyond the respective dates indicated will be made except on terms that will indemnify, defend and hold Seller harmless against all loss and additional expense. Buyer shall be responsible for any additional shipping charges incurred by Seller due to Buyer's changes in shipping, product specifications or in accordance with Section 13, herein.

**4. Warranty.** Seller warrants that the Products sold hereunder shall be free from defects in material or workmanship for a period of eighteen months from the date of delivery to Buyer. The prices charged for Seller's products are based upon the exclusive limited warranty stated above, and upon the following disclaimer: **DISCLAIMER OF WARRANTY: THIS WARRANTY COMPRISES THE SOLE AND ENTIRE WARRANTY PERTAINING TO PRODUCTS PROVIDED HEREUNDER. SELLER DISCLAIMS ALL OTHER WARRANTIES, EXPRESS AND IMPLIED, INCLUDING MERCHANTABILITY AND FITNESS FOR A PARTICULAR PURPOSE.**

**5. Claims; Commencement of Actions.** Buyer shall promptly inspect all Products upon delivery. No claims for shortages will be allowed unless reported to the Seller within 10 days of delivery. No other claims against Seller will be allowed unless asserted in writing within 60 days after delivery or, in the case of an alleged breach of warranty, within 30 days after the date within the warranty period on which the defect is or should have been discovered by Buyer. Any action based upon breach of this agreement or upon any other claim arising out of this sale (other than an action by Seller for any amount due to Seller from Buyer) must be commenced within thirteen months from the date of tender of delivery by Seller or, for a cause of action based upon an alleged breach of warranty, within thirteen months from the date within the warranty period on which the defect is or should have been discovered by Buyer.

**6. LIMITATION OF LIABILITY.** UPON NOTIFICATION, SELLER WILL, AT ITS OPTION, REPAIR OR REPLACE A DEFECTIVE PRODUCT, OR REFUND THE PURCHASE PRICE. IN NO EVENT SHALL SELLER BE LIABLE TO BUYER FOR ANY SPECIAL, INDIRECT, INCIDENTAL OR CONSEQUENTIAL DAMAGES ARISING OUT OF, OR AS THE RESULT OF THE SALE, DELIVERY, NON-DELIVERY, SERVICING, USE OR LOSS OF USE OF THE PRODUCTS OR ANY PART THEREOF, OR FOR ANY CHARGES OR EXPENSES OF ANY NATURE INCURRED WITHOUT SELLER'S WRITTEN CONSENT, EVEN IF SELLER HAS BEEN NEGLIGENT, WHETHER IN CONTRACT, TORT OR OTHER LEGAL THEORY. IN NO EVENT SHALL SELLER'S LIABILITY UNDER ANY CLAIM MADE BY BUYER EXCEED THE PURCHASE PRICE OF THE PRODUCTS.

**7. Contingencies.** Seller shall not be liable for any default or delay in performance if caused by circumstances beyond the reasonable control of Seller.

**8. User Responsibility.** The user, through its own analysis and testing, is solely responsible for making the final selection of the system and Product and assuring that all performance, endurance, maintenance, safety and warning requirements of the application are met. The user must analyze all aspects of the application and follow applicable industry standards and Product information. If Seller provides Product or system options, the user is responsible for determining that such data and specifications are suitable and sufficient for all applications and reasonably foreseeable uses of the Products or systems.

**9. Loss to Buyer's Property.** Any designs, tools, patterns, materials, drawings, confidential information or equipment furnished by Buyer or any other items which become Buyer's property, may be considered obsolete and may be destroyed by Seller after two consecutive years have elapsed without Buyer placing an order for the items which are manufactured using such property. Seller shall not be responsible for any loss or damage to such property while it is in Seller's possession or control.

**10. Special Tooling.** A tooling charge may be imposed for any special tooling, including without limitation, dies, fixtures, molds and patterns, acquired to manufacture Products. Such special tooling shall be and remain Seller's property notwithstanding payment of any charges by Buyer. In no event will Buyer acquire any interest in apparatus belonging to Seller which is utilized in the manufacture of the Products, even if such apparatus has been specially converted or adapted for such manufacture and notwithstanding any charges paid by Buyer. Unless otherwise agreed, Seller shall have the right to alter, discard or otherwise dispose of any special tooling or other property in its sole discretion at any time.

**11. Buyer's Obligation; Rights of Seller.** To secure payment of all sums due or otherwise, Seller shall retain a security interest in the goods delivered and this agreement shall be deemed a Security Agreement under the Uniform Commercial Code. Buyer authorizes Seller as its attorney to execute and file on Buyer's behalf all documents Seller deems necessary to perfect its security interest. Seller shall have a security interest in, and lien upon, any property of Buyer in Seller's possession as security for the payment of any amounts owed to Seller by Buyer.

**12. Improper Use and Indemnity.** Buyer shall indemnify, defend, and hold Seller harmless from any claim, liability, damages, lawsuits, and costs (including attorney fees), whether for personal injury, property damage, patent, trademark or copyright infringement or any other claim, brought by or incurred by Buyer, Buyer's employees, or any other person, arising out of: (a) improper selection, improper application or other misuse of Products purchased by Buyer from Seller; (b) any act or omission, negligent or otherwise, of Buyer; (c) Seller's use of patterns, plans, drawings, or specifications furnished by Buyer to manufacture Product; or (d) Buyer's failure to comply with these terms and conditions. Seller shall not indemnify Buyer under any circumstance except as otherwise provided.

**13. Cancellations and Changes.** Orders shall not be subject to cancellation or change by Buyer for any reason, except with Seller's written consent and upon terms that will indemnify, defend and hold Seller harmless against all direct, incidental and consequential loss or damage. Seller may change product features, specifications, designs and availability with notice to Buyer.

**14. Limitation on Assignment.** Buyer may not assign its rights or obligations under this agreement without the prior written consent of Seller.

**15. Entire Agreement.** This agreement contains the entire agreement between the Buyer and Seller and constitutes the final, complete and exclusive expression of the terms of the agreement. All prior or contemporaneous written or oral agreements or negotiations with respect to the subject matter are herein merged.

**16. Waiver and Severability.** Failure to enforce any provision of this agreement will not waive that provision nor will any such failure prejudice Seller's right to enforce that provision in the future. Invalidation of any provision of this agreement by legislation or other rule of law shall not invalidate any other provision herein. The remaining provisions of this agreement will remain in full force and effect.

**17. Termination.** This agreement may be terminated by Seller for any reason and at any time by giving Buyer thirty (30) days written notice of termination. In addition, Seller may by written notice immediately terminate this agreement for the following: (a) Buyer commits a breach of any provision of this agreement (b) the appointment of a trustee, receiver or custodian for all or any part of Buyer's property (c) the filing of a petition for relief in bankruptcy of the other Party on its own behalf, or by a third party (d) an assignment for the benefit of creditors, or (e) the dissolution or liquidation of the Buyer.

**18. Governing Law.** This agreement and the sale and delivery of all Products hereunder shall be deemed to have taken place in and shall be governed and construed in accordance with the laws of the State of Ohio, as applicable to contracts executed and wholly performed therein and without regard to conflicts of laws principles. Buyer irrevocably agrees and consents to the exclusive jurisdiction and venue of the courts of Cuyahoga County, Ohio with respect to any dispute, controversy or claim arising out of or relating to this agreement. Disputes between the parties shall not be settled by arbitration unless, after a dispute has arisen, both parties expressly agree in writing to arbitrate the dispute.

**19. Indemnity for Infringement of Intellectual Property Rights.** Seller shall have no liability for infringement of any patents, trademarks, copyrights, trade dress, trade secrets or similar rights except as provided in this Section. Seller will defend and indemnify Buyer against allegations of infringement of U.S. patents, U.S. trademarks, copyrights, trade dress and trade secrets ("Intellectual Property Rights"). Seller will defend at its expense and will pay the cost of any settlement or damages awarded in an action brought against Buyer based on an allegation that a Product sold pursuant to this Agreement infringes the Intellectual Property Rights of a third party. Seller's obligation to defend and indemnify Buyer is contingent on Buyer notifying Seller within ten (10) days after Buyer becomes aware of such allegations of infringement, and Seller having sole control over the defense of any allegations or actions including all negotiations for settlement or compromise. If a Product is subject to a claim that it infringes the Intellectual Property Rights of a third party, Seller may, at its sole expense and option, procure for Buyer the right to continue using the Product, replace or modify the Product so as to make it noninfringing, or offer to accept return of the Product and return the purchase price less a reasonable allowance for depreciation. Notwithstanding the foregoing, Seller shall have no liability for claims of infringement based on information provided by Buyer, or directed to Products delivered hereunder for which the designs are specified in whole or part by Buyer, or infringements resulting from the modification, combination or use in a system of any Product sold hereunder. The foregoing provisions of this Section shall constitute Seller's sole and exclusive liability and Buyer's sole and exclusive remedy for infringement of Intellectual Property Rights.

**20. Taxes.** Unless otherwise indicated, all prices and charges are exclusive of excise, sales, use, property, occupational or like taxes which may be imposed by any taxing authority upon the manufacture, sale or delivery of Products.

**21. Equal Opportunity Clause.** For the performance of government contracts and where dollar value of the Products exceed \$10,000, the equal employment opportunity clauses in Executive Order 11246, VEVRRA, and 41 C.F.R. §§ 60-1.4(a), 60-741.5(a), and 60-250.4, are hereby incorporated.



## North America

### Industrial

#### USA

##### Chicago Region

Naperville, IL  
Tel: (630) 964 0796

##### Great Lakes Region

Fairlawn, OH  
Tel: (330) 670 2680

##### Northeast Region

Lebanon, NJ  
Tel: (908) 236 4121

##### Pacific Region

Buena Park, CA  
Tel: (714) 228 2509

##### Southern Region

Alpharetta, GA  
Tel: (770) 619 9767

#### Canada

Milton, Ontario  
Tel: (905) 693 3000

#### México

Toluca, Edo. de México  
Tel: (52) 72 2275 4200

### Mobile

#### USA

##### Global Mobile

Lincolnshire, IL  
Tel: (847) 821 1500

##### Central Region

Lincolnshire, IL  
Tel: (847) 821 1500

##### Eastern Region

North Canton, OH  
Tel: (330) 284 3355

##### Midwest Region

Hiawatha, IA  
Tel: (319) 393 1221

##### Southern Region

Aledo, TX  
Tel: (817) 441 1794

##### Western Region

Buena Park, CA  
Tel: (714) 228 2509

#### Canada

Milton, Ontario  
Tel: (905) 693 3000

#### México

Apodaca, N.L.  
Tel: (52) 81 8156 6000

### Truck

#### USA

##### Eastern Region

Cleveland, OH  
Tel: (440) 519 1125

##### Western Region

San Ramon, CA  
Tel: (925) 735 9573

#### Canada

Milton, Ontario  
Tel: (905) 693 3000

#### México

Apodaca, N.L.  
Tel: (52) 81 8156 6000

## Europe

#### Austria

Wiener Neustadt  
Tel: (43) 2622 23501 0

#### Belgium

Nivelles  
Tel: (32) 67 280 900

#### Czech Republic and Slovakia

Klecany  
Tel: (420) 284 083 111

#### Denmark

Ballerup  
Tel: (45) 4356 0400

#### Finland

Vantaa  
Tel: (358) 20 753 2500

#### France

Contamine-sur-Arve  
Tel: (33) 4 50 25 80 25

#### Germany

Kaarst  
Tel: (49) 2131 4016 0

#### Greece

Athens  
Tel: (30) 210 933 6450

#### Hungary

Budapest  
Tel: (36) 1 220 4155

#### Ireland

County Dublin, Baldonnell  
Tel: (353) 1 466 6370

#### Italy

Corsico, Milano  
Tel: (39) 02 45 19 21

## The Netherlands

Oldenzaal  
Tel: (31) 541 585000

## Norway

Ski  
Tel: (47) 64 91 10 00

## Poland

Warsaw  
Tel: (48) 22 57 32400

## Portugal

Leca da Palmeira  
Tel: (351) 22 999 7360

## Romania

Bucharest  
Tel: (40) 21 252 1382

## Russia

Moscow  
Tel: (7) 495 580 9145

## Slovenia

Novo Mesto  
Tel: (386) 7 337 6650

## Spain

Madrid  
Tel: (34) 91 675 7300

## Sweden

Spanga  
Tel: (46) 8 597 95000

## Ukraine

Kiev  
Tel: (380) 44 494 2731

## United Kingdom

Warwick,  
Tel: (44) 1926 317878

## Asia Pacific

### Australia

Castle Hill  
Tel: (61) 2 9634 7777

### China

Beijing  
Tel: (86) 10 6561 0520

### Shanghai

Tel: (86) 21 5031 2525

### Hong Kong

Tel: (852) 2428 8008

### India

Mahape, Navi Mumbai  
Tel: (91) 22 5613 7081

## Korea

Seoul  
Tel: (82) 2 559 0400

## Malaysia

Subang Jaya  
Tel: (60) 3 5638 1476

## New Zealand

Mt. Wellington  
Tel: (64) 9 574 1744

## Japan

Tokyo  
Tel: (81) 3 6408 3900

## Singapore

Jurong Town  
Tel: (65) 6 887 6300

## Taiwan

Taipei  
Tel: (886) 2 2298 8987

## Thailand

Bangkok  
Tel: (662) 717 8140

## Middle East

### United Arab Emirates

Abu Dhabi  
Tel: (971) 2 678 8587

## Latin America

### Pan American Division

Miami, FL  
Tel: (305) 470 8800

### Argentina

Buenos Aires  
Tel: (54) 33 2744 4129

### Brazil

Cachoeirinha RS  
Tel: (55) 51 3470 9144

### Venezuela

Caracas  
Tel: (58) 212 238 5422

## Africa

### South Africa

Kempton Park  
Tel: (27) 11 961 0700

